

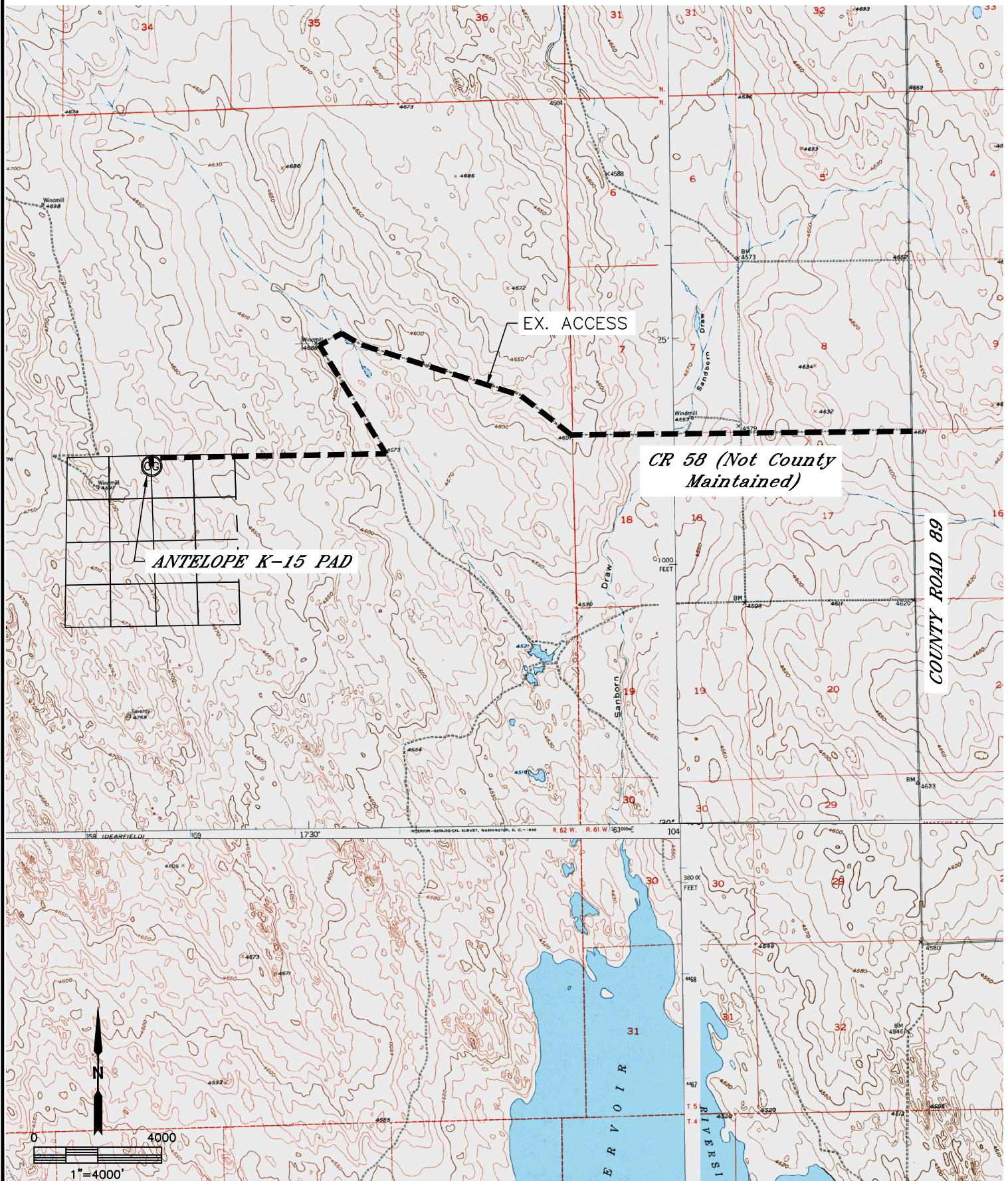


Lat40°, Inc. 1635 Foxtrail Drive, Suite 325 Loveland, CO 970-776-3321

# ACCESS ROAD MAP

ANTELOPE K-15 PAD

SECTION: 15  
TOWNSHIP: 5N  
RANGE: 62W





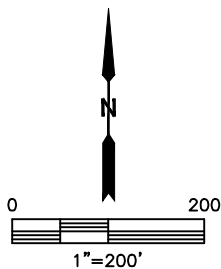


Lat40°, Inc. 1635 Foxtrail Drive, Suite 325 Loveland, CO 970-776-3321

# ACCESS ROAD MAP

ANTELOPE K-15 PAD

SECTION: 15  
TOWNSHIP: 5N  
RANGE: 62W





Lat40°, Inc. 1635 Foxtrail Drive, Suite 325 Loveland, CO 970-776-3321

## ACCESS ROAD MAP

ANTELOPE K-15 PAD

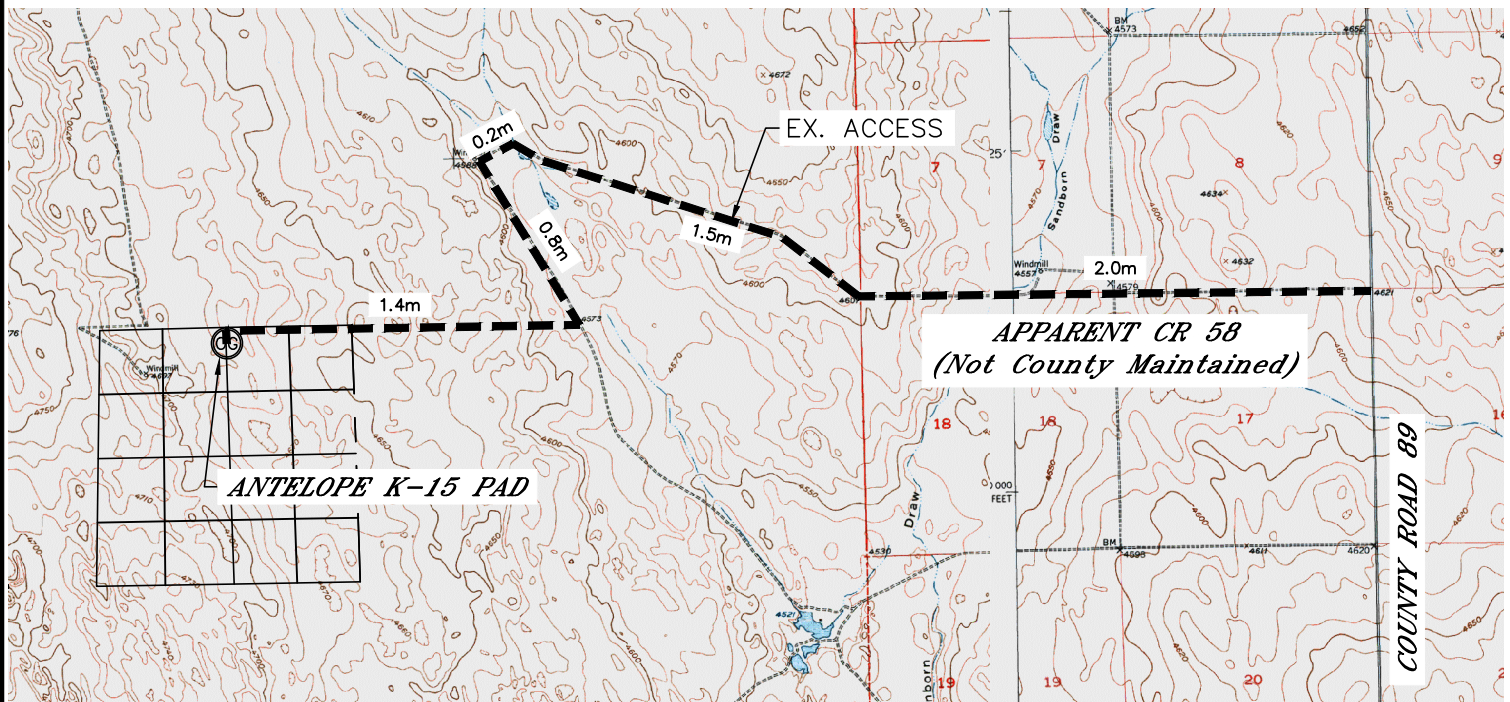
EXISTING WELLS:  
NONE

PROPOSED WELLS:  
ANTELOPE K21-024-15HNB  
ANTELOPE K-0-15HNB  
ANTELOPE K31-034-15HNB  
ANTELOPE 31-34-15HNB

SECTION: 15  
TOWNSHIP: 5N  
RANGE: 62W

### DRIVING DIRECTIONS TO ANTELOPE K-15 PAD:

FROM THE INTERSECTION OF WELD COUNTY ROAD 89 AND APPARENT COUNTY ROAD 58 (NOT COUNTY MAINTAINED), DRIVE WEST ON APPARENT COUNTY ROAD 58 FOR 2.0 MILES, DRIVE NORTHWEST ALONG EXISTING FIELD ACCESS ROAD FOR 1.5 MILES, DRIVE SOUTHWEST ALONG FIELD ACCESS ROAD FOR 0.2 MILES, DRIVE SOUTHEAST ALONG FIELD ACCESS ROAD FOR 0.8 MILES, DRIVE WEST ALONG FIELD ACCESS ROAD FOR 1.4 MILES TO THE ANTELOPE K-15 PAD ON SOUTH SIDE OF ROAD.



NOT TO SCALE