

T2N, R97W, 6th P.M.

KOCH EXPLORATION COMPANY

Well location, WRD FEDERAL #25-31 (SURFACE LOCATION), located as shown in the SE 1/4 SE 1/4 of Section 26, T2N, R97W, 6th P.M., Rio Blanco County, Colorado.

BASIS OF ELEVATION

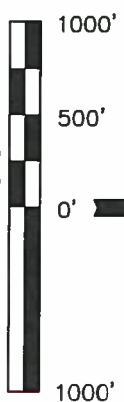
SPOT ELEVATION AT A BRIDGE LOCATED IN THE SE 1/4 OF SECTION 34, T2N, R97W, 6th P.M. TAKEN FROM THE BARCUS CREEK SE, QUADRANGLE, COLORADO, RIO BLANCO COUNTY, 7.5 MINUTE QUAD. (TOPOGRAPHIC MAP) PUBLISHED BY THE UNITED STATES DEPARTMENT OF THE INTERIOR, GEOLOGICAL SURVEY. SAID ELEVATION IS MARKED AS BEING 5700 FEET.

BASIS OF BEARINGS

BASIS OF BEARINGS IS A G.P.S. OBSERVATION.

LINE TABLE		
LINE	DIRECTION	LENGTH
L1	N46°13'01"E	1065.44'

Target Bottom Hole



CERTIFICATE

THIS IS TO CERTIFY THAT THE ABOVE PLAT WAS PREPARED FROM FIELD NOTES OF ACTUAL SURVEYS MADE BY ME OR UNDER MY SUPERVISION AND THAT THE SAME ARE TRUE AND CORRECT TO THE BEST OF MY KNOWLEDGE AND BELIEF.

REVISED: 09-10-13 K.O.
REVISED: 06-12-13 M.D.

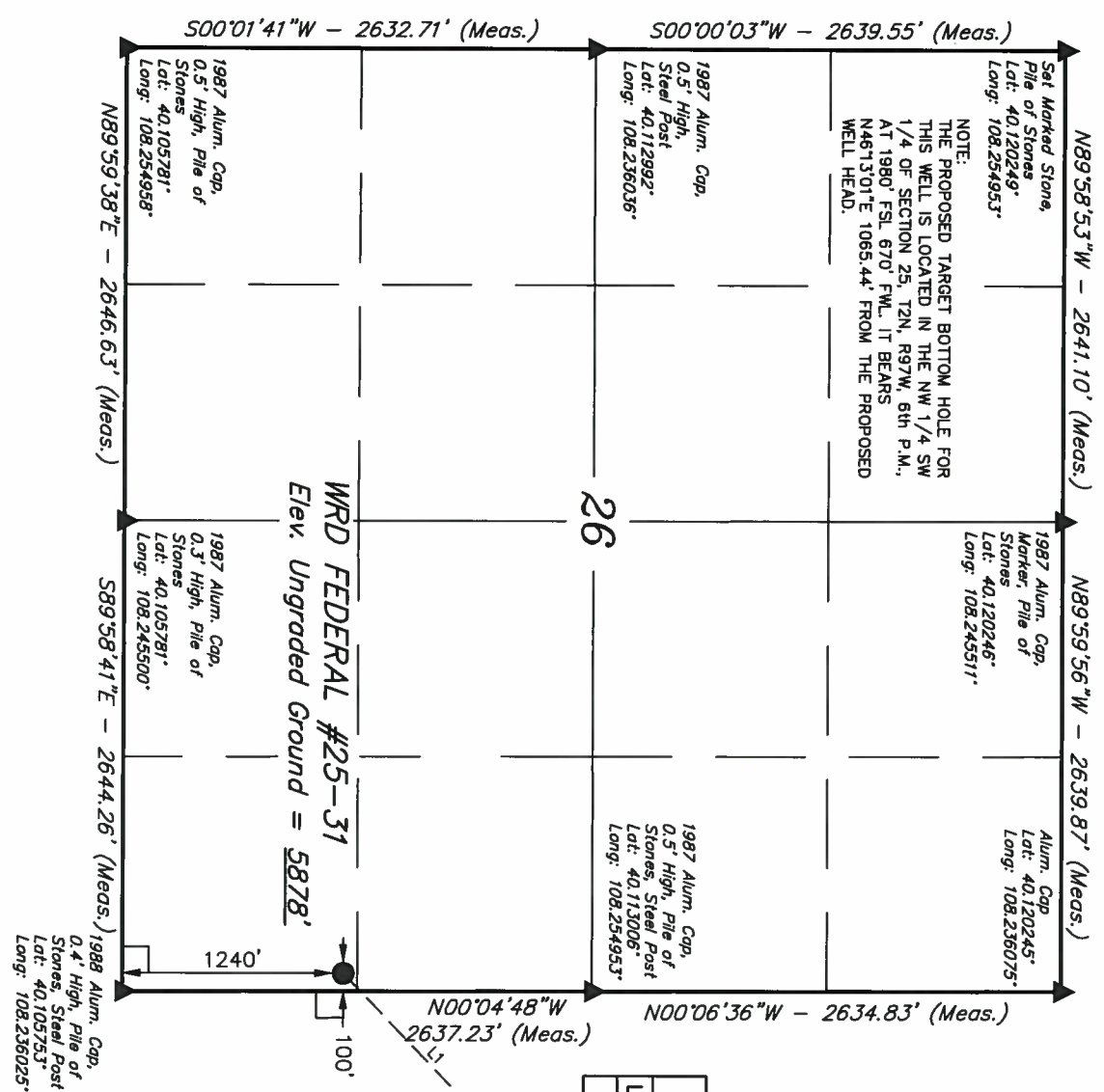
UTAH ENGINEERING & LAND SURVEYING
85 SOUTH 200 EAST - VERNAL, UTAH 84078
(435) 789-1017

SCALE		DATE SURVEYED:	DATE DRAWN:
1" = 1000'		03-07-13	03-11-13

PARTY	REFERENCES	FILE
B.H. A.H. M.P. T.B. M.D.	G.L.O. PLAT	KOCH EXPLORATION COMPANY
WEATHER		
COLD		

LEGEND:

- 90° SYMBOL
- PROPOSED WELL HEAD.
- SECTION CORNERS LOCATED.



T2N, R97W, 6th P.M.

Alum. Cap.
Lat: 40.120245°
Long: 108.236075°

EAST - 5280.00' (G.L.O.)

R 97
W 96

KOCH EXPLORATION COMPANY

Well location, WRD FEDERAL #25-31 (TARGET BOTTOM HOLE), located as shown in the NW 1/4 SW 1/4 of Section 25, T2N, R97W, 6th P.M., Rio Blanco County, Colorado.

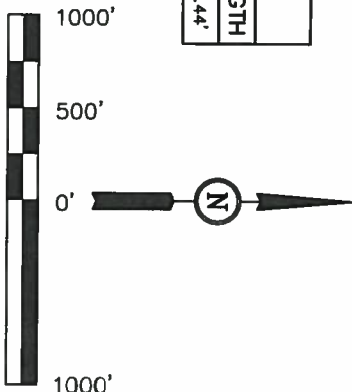
BASIS OF ELEVATION

SPOT ELEVATION AT A BRIDGE LOCATED IN THE SE 1/4 OF SECTION 34, T2N, R97W, 6th P.M. TAKEN FROM THE BARCUS CREEK SE. QUADRANGLE, COLORADO, RIO BLANCO COUNTY, 7.5 MINUTE QUAD. (TOPOGRAPHIC MAP) PUBLISHED BY THE UNITED STATES DEPARTMENT OF THE INTERIOR, GEOLOGICAL SURVEY. SAID ELEVATION IS MARKED AS BEING 5700 FEET.

BASIS OF BEARINGS

BASIS OF BEARINGS IS A G.P.S. OBSERVATION.

LINE TABLE	
LINE	DIRECTION LENGTH
L1	N46°13'01"E 1065.44'



SCALE

CERTIFICATE

THIS IS TO CERTIFY THAT THE ABOVE PLAT WAS PREPARED FROM FIELD NOTES OF ACTUAL SURVEYS MADE BY ME OR UNDER MY SUPERVISION AND THAT THE SAME ARE TRUE AND CORRECT TO THE BEST OF MY KNOWLEDGE AND BELIEF.

REVISED: 09-10-13 K.O.
REVISED: 06-12-13 M.D.

REGISTERED LAND SURVEYOR
REGISTRATION NO. 17492
STATE OF COLORADO
09-11-13

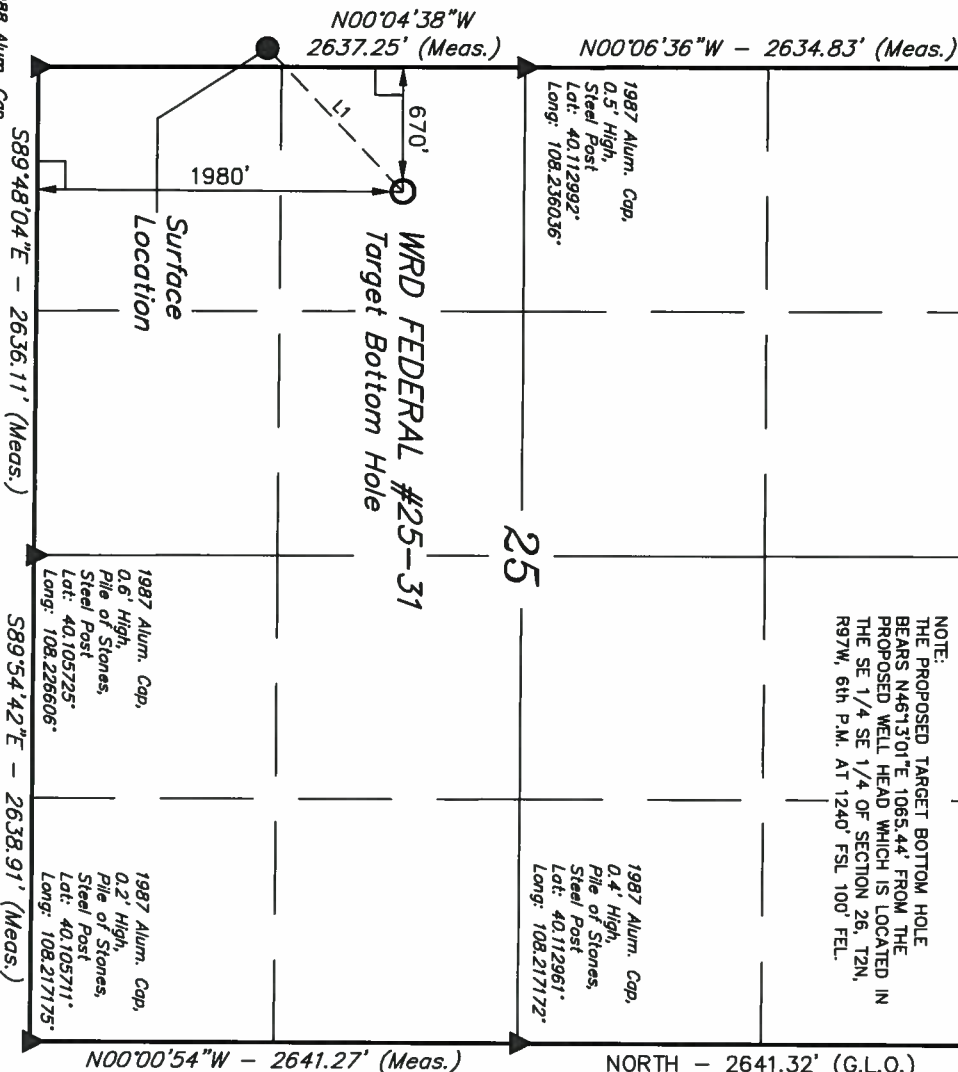
UTAH ENGINEERING & LAND SURVEYING
85 SOUTH 200 EAST - VERNAL, UTAH 84078
(435) 789-1017

SCALE 1" = 1000'
DATE SURVEYED: 03-07-13 DATE DRAWN: 03-11-13

PARTY	REFERENCES
B.H. A.H. M.P. T.B. M.D.	G.L.O. PLAT
WEATHER	FILE
COLD	KOCH EXPLORATION COMPANY

LEGEND:

- = 90° SYMBOL
- = PROPOSED WELL HEAD.
- ▲ = SECTION CORNERS LOCATED.



1988 Alum. Cap.
0.4' High, Pile of Stones,
Steel Post
Lat: 40.105753°
Long: 108.236025°

1987 Alum. Cap.
0.5' High,
Steel Post
Lat: 40.112992°
Long: 108.236036°

1987 Alum. Cap.
0.4' High,
Pile of Stones,
Steel Post
Lat: 40.112961°
Long: 108.217172°

1987 Alum. Cap.
0.6' High,
Pile of Stones,
Steel Post
Lat: 40.105725°
Long: 108.226606°

1987 Alum. Cap.
0.2' High,
Pile of Stones,
Steel Post
Lat: 40.105711°
Long: 108.217175°