

1801 Broadway
Suite 500
Denver, Colorado 80202



Shannon Hartnett
Regulatory Compliance
Specialist
Tel: 303.398.0351
E-mail: shartnett@gwogco.com

November 11, 2013

Colorado Oil and Gas Conservation Commission
1120 Lincoln Street, Suite 801
Denver, Colorado 80203

RE: **Proposed Wellbore Spacing Unit**
Spaur Brothers EH 31-222HN

Niobrara New Drill
Township 7 North, Range 63 West, 6th P.M.
Section 31
Weld County, Colorado

Dear Director:

Great Western Operating Company, LLC is planning to drill the above captioned well in accordance with the provisions of COGCC Rule 318(l)e(2).

Great Western proposed wellbore spacing unit consists of:
N½S½ Sec. 31-T7N-R63W
160 acres

Great Western Operating Company, LLC respectfully requests that the COGCC review the enclosed map illustrating the proposed wellbore spacing unit.

Respectfully,

A handwritten signature in blue ink that reads "Shannon Hartnett". The signature is fluid and cursive, with the first name being more prominent.

Shannon Hartnett
Regulatory Compliance Specialist
Great Western Operating Company, LLC

T7N, R63W, 6th. P.M.

GREAT WESTERN OIL & GAS COMPANY

Well location, SPAUR BROTHERS EH #31-222HN, located as shown in the NE 1/4 SE 1/4 of Section 31, T7N, R63W, 6th P.M., Weld County, Colorado.

BASIS OF ELEVATION

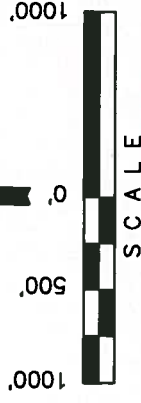
USGS COOPERATIVE BASE NETWORK CONTROL STATION, DESIGNATION 'M414'. NGS DATA SHEET LISTS THE NAVD 88 ELEVATION AS BEING 4600.58 FEET

BASIS OF BEARINGS

BASIS OF BEARINGS IS A G.P.S. OBSERVATION.

LEGEND:

- └─┘ = 90° SYMBOL
- = PROPOSED WELL HEAD.
- ▲ = SECTION CORNERS LOCATED.
- ◇ = ENTRY POINT
- = TARGET BOTTOM HOLE



CERTIFICATE

THIS IS TO CERTIFY THAT THE ABOVE PLATS WERE PREPARED FROM FIELD NOTES OF ACTUAL SURVEYS MADE BY ME OR UNDER MY SUPERVISION AND THAT THE SAME ARE TRUE AND CORRECT TO THE BEST OF MY KNOWLEDGE AND BELIEF.

REGISTERED LAND SURVEYOR
REGISTRATION NO. 16872402
STATE OF COLORADO 08-17-13

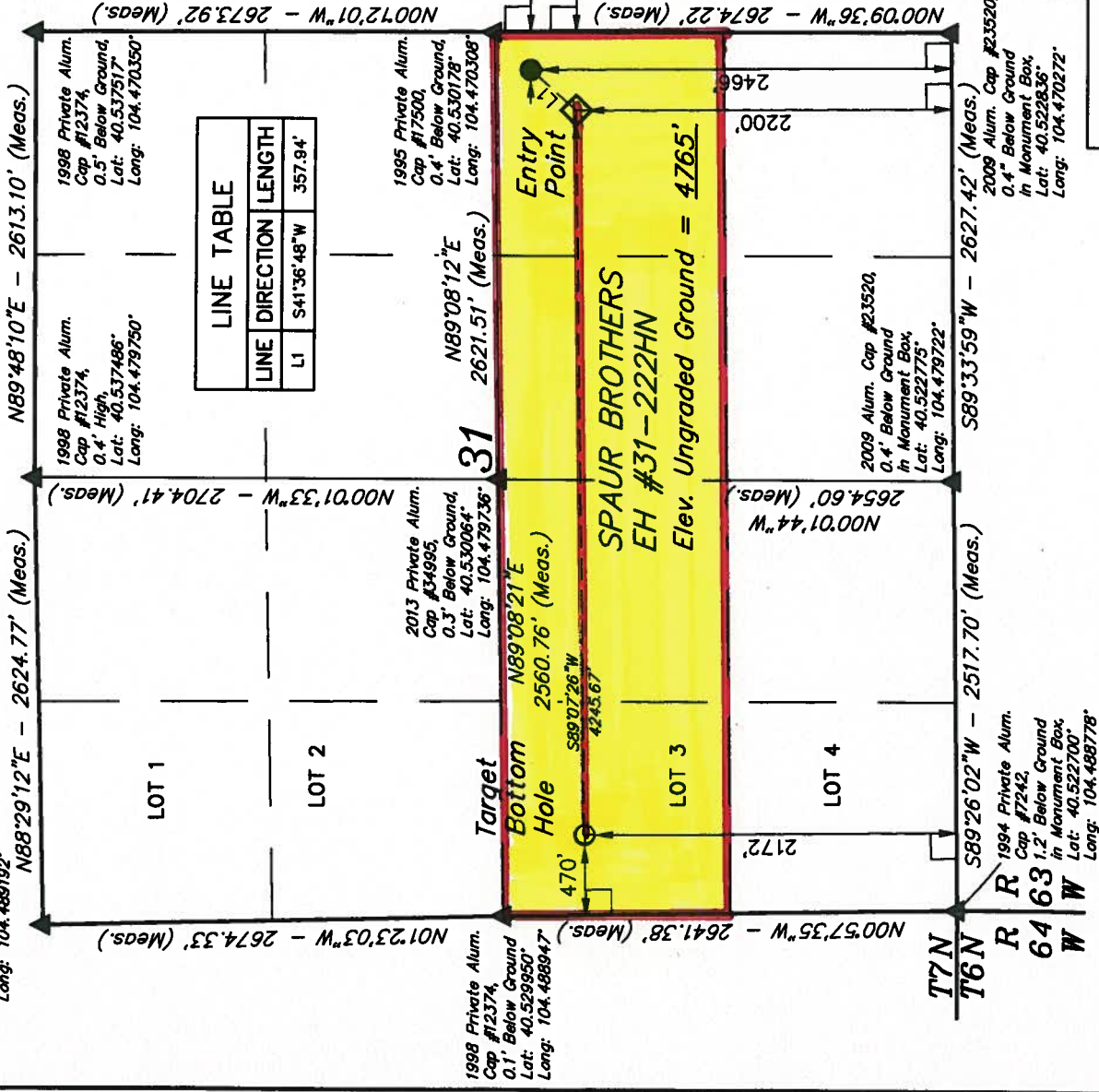
REV: 09-14-13 H.K.W.

UTAH ENGINEERING & LAND SURVEYING

85 SOUTH 200 EAST - VERNAL, UTAH 84078

(435) 789-1017

SCALE: 1" = 1000'	DATE SURVEYED: 06-10-13	DATE DRAWN: 06-12-13
PARTY: G.W. C.M. J.W.	REFERENCES: G.L.O. PLAT	
WEATHER: HOT	FILE:	
		GREAT WESTERN OIL & GAS COMPANY



PDOP = 1.6	
NAD 83 (TARGET BOTTOM HOLE)	NAD 83 (ENTRY POINT)
LATITUDE = 40°31'43.23" (40.528675)	LATITUDE = 40°31'43.92" (40.528667)
LONGITUDE = 104°28'14.02" (104.467228)	LONGITUDE = 104°28'19.04" (104.471956)
NAD 27 (TARGET BOTTOM HOLE)	NAD 27 (ENTRY POINT)
LATITUDE = 40°31'43.30" (40.528694)	LATITUDE = 40°31'43.98" (40.528683)
LONGITUDE = 104°28'12.18" (104.466717)	LONGITUDE = 104°28'17.21" (104.471447)