

WPX Energy Rocky Mtn LLC

RWF 33-36

API #05-045-21552-00

2607' FNL x 2601' FEL - (SWNE) SHL

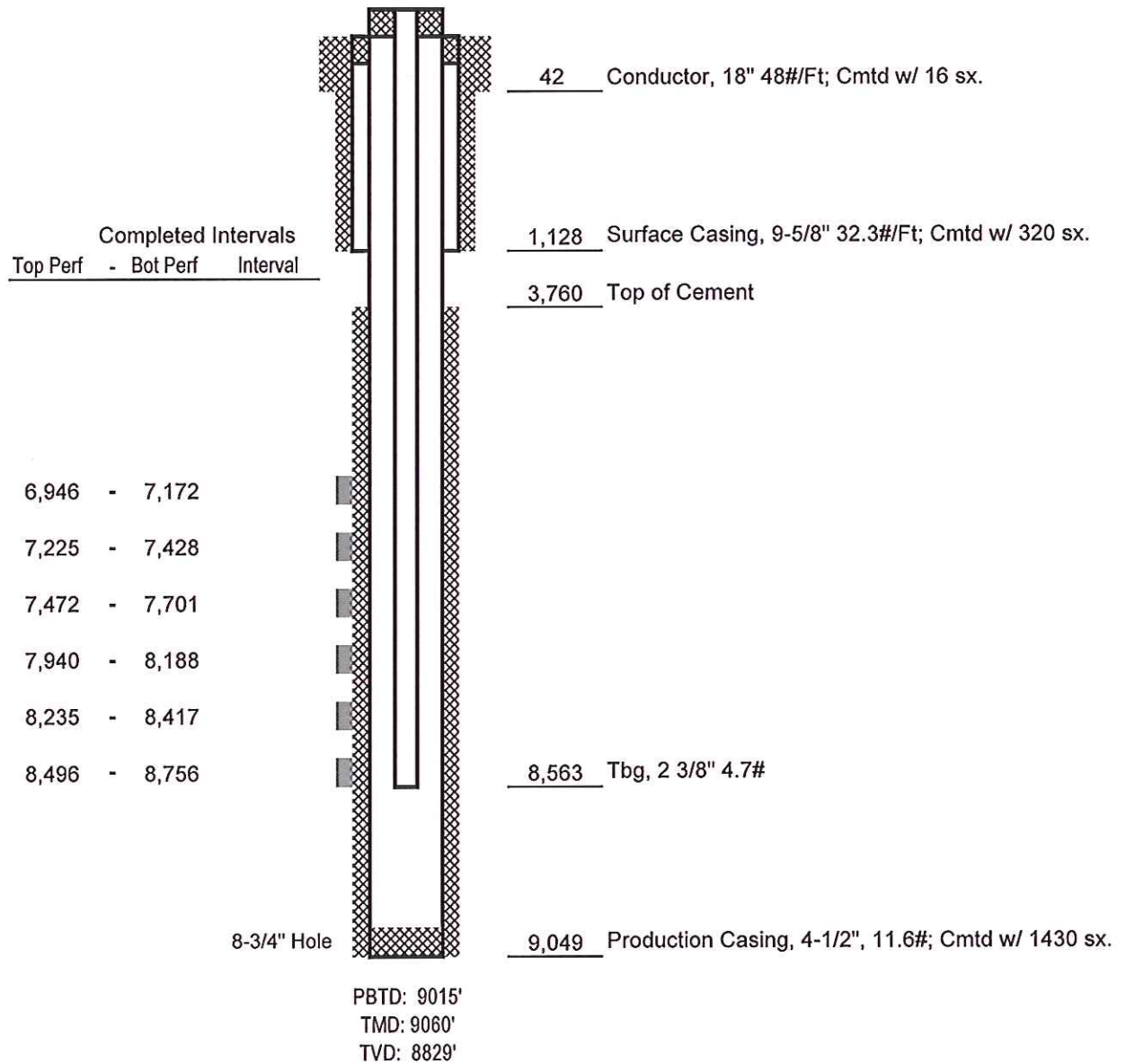
1252' FSL x 1773' FEL - (SWSE) BHL

Sec. 36-T6S-R94W

Garfield County, Colorado

FINAL

DATED 11-15-13



Not to Scale