



NABORS

**COMPLETION
& PRODUCTION
SERVICES CO.**

**MICRO
LOG**

Company		MULL DRILLING COMPANY, INC.	
Well		LARSEN UNIT #1-24	
Field		WILDCAT	
County		KIOWA	
State		COLORADO	
Location:		AP1 # : 05-061-06871	
SEC 24 TWP 17S RGE 45W		CDL/CNL DIL/SON	
Permanent Datum		GROUND LEVEL Elevation 4109	
Log Measured From		KELLY BUSHING 11' A.G.L.	
Drilling Measured From		KELLY BUSHING	
Date	1/8/12		
Run Number	TWO		
Depth Driller	5430		
Depth Logger	5432		
Bottom Logged Interval	5414		
Top Log Interval	3700		
Casing Driller	8 5/8" @ 318'		
Casing Logger	316		
Bit Size	7 7/8"		
Type Fluid in Hole	CHEMICAL MUD	CHLORIDES 1900 PPM	
Density / Viscosity	9.2/56		
pH / Fluid Loss	10.0/8.0		
Source of Sample	FLOWLINE		
Rm @ Meas. Temp	.95 @ 59F		
Rmt @ Meas. Temp	.71 @ 59F		
Rmc @ Meas. Temp	1.14 @ 59F		
Source of Rmt / Rmc	MEASUREMENT		
Rm @ BHT	.43 @ 129F		
Time Circulation Stopped	3 HOURS		
Time Logger on Bottom			
Maximum Recorded Temperature	129F		
Equipment Number	4010		
Location	HAYS, KANSAS		
Recorded By	JASON CAPPELLUCCI		
Witnessed By	PHIL ASKEY		

<<< Fold Here >>>

All interpretations are opinions based on inferences from electrical or other measurements and we cannot and do not guarantee the accuracy or correctness of any interpretation, and we shall not, except in the case of gross or willful negligence on our part, be liable or responsible for any loss, costs, damages, or expenses incurred or sustained by anyone resulting from any interpretation made by any of our officers, agents or employees. These interpretations are also subject to our general terms and conditions set out in our current Price Schedule.

Comments

THANK YOU FOR USING SUPERIOR WELL SERVICE HAYS, KANSAS (785) 628-6395
DIRECTIONS
CHEYENNE WELLS CO. - 16 S. ON HWY 385 TO RD. Z - 6 W. TO THE T
2 S. - E. INTO



NABORS
COMPLETION
& PRODUCTION

MAIN SECTION

Database File:

009798pe.db

Dataset Pathname:

pass7.2

Presentation Format:

_micro

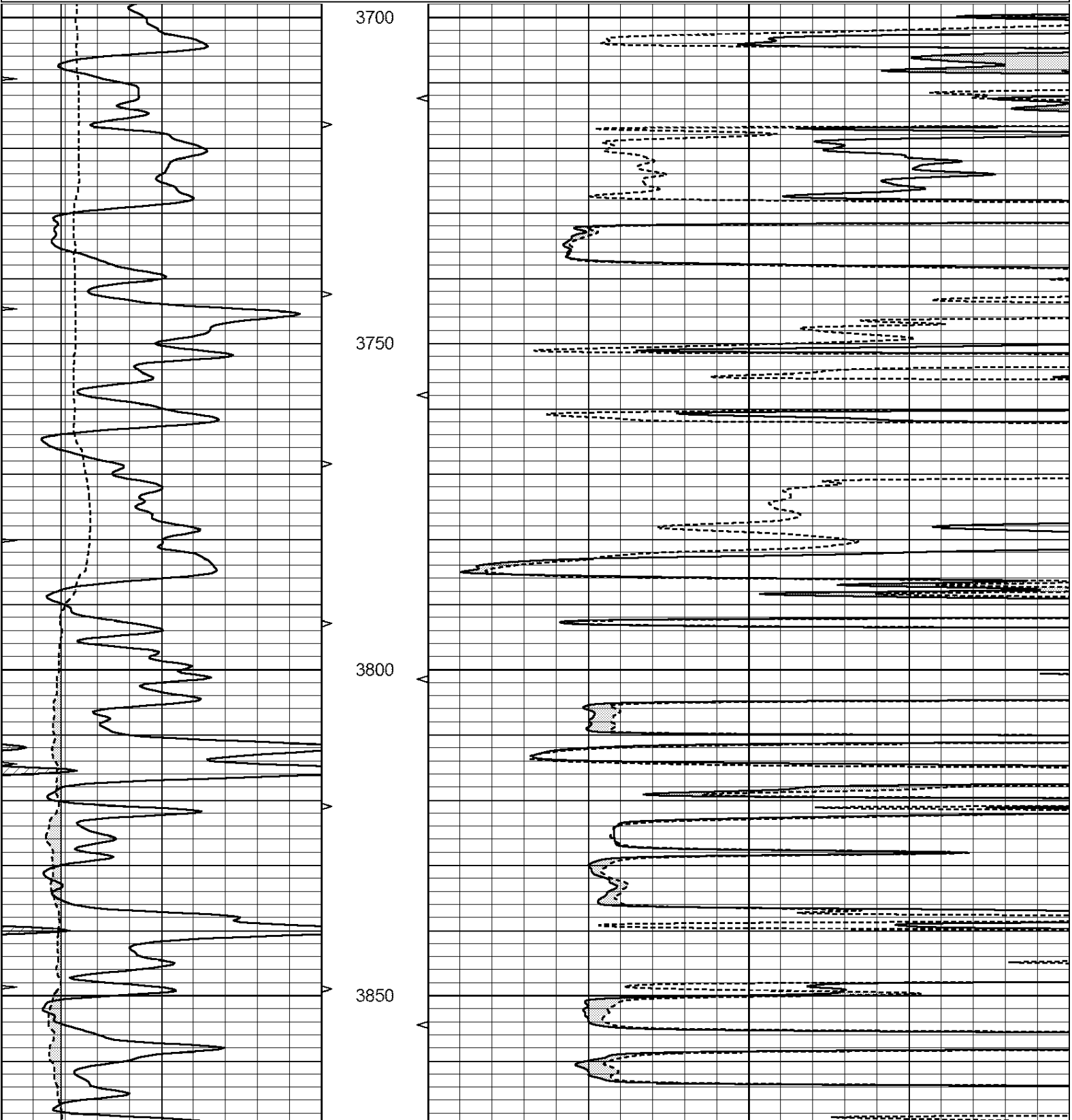
Dataset Creation:

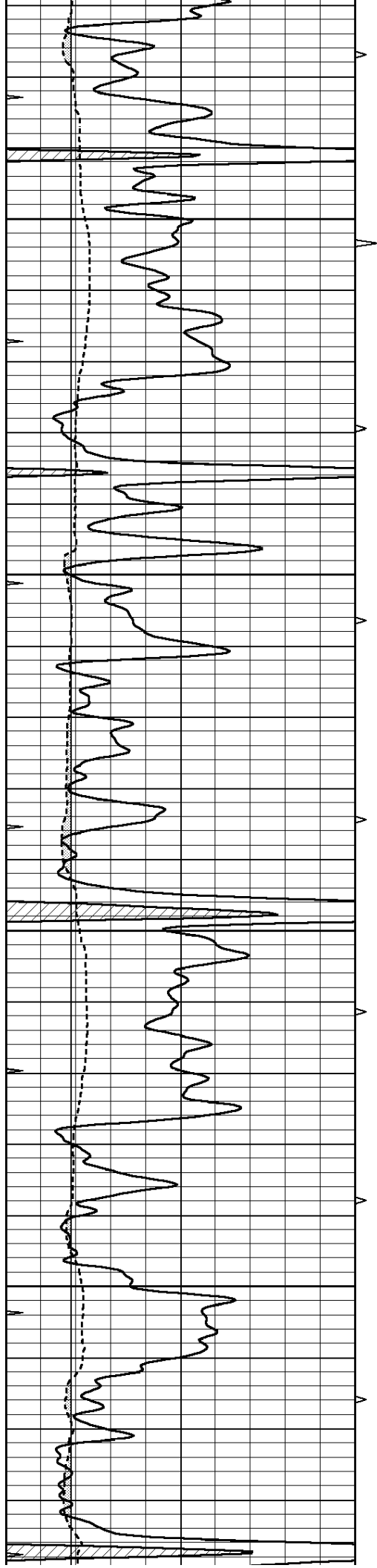
Tue Jan 08 15:50:39 2013 by Calc Open-Cased 090629

Charted by:

Depth in Feet scaled 1:240

0	GAMMA RAY (GAPI)	150	ABHV	0	MEL1.5 (Ohm-m)	40
6	CALIPER (in)	16	10 (ft3)	0	MEL2.0 (Ohm-m)	40
6	CALIPER (in)	16	TBHV			
0	MINMK	20	0 (ft3)	10		



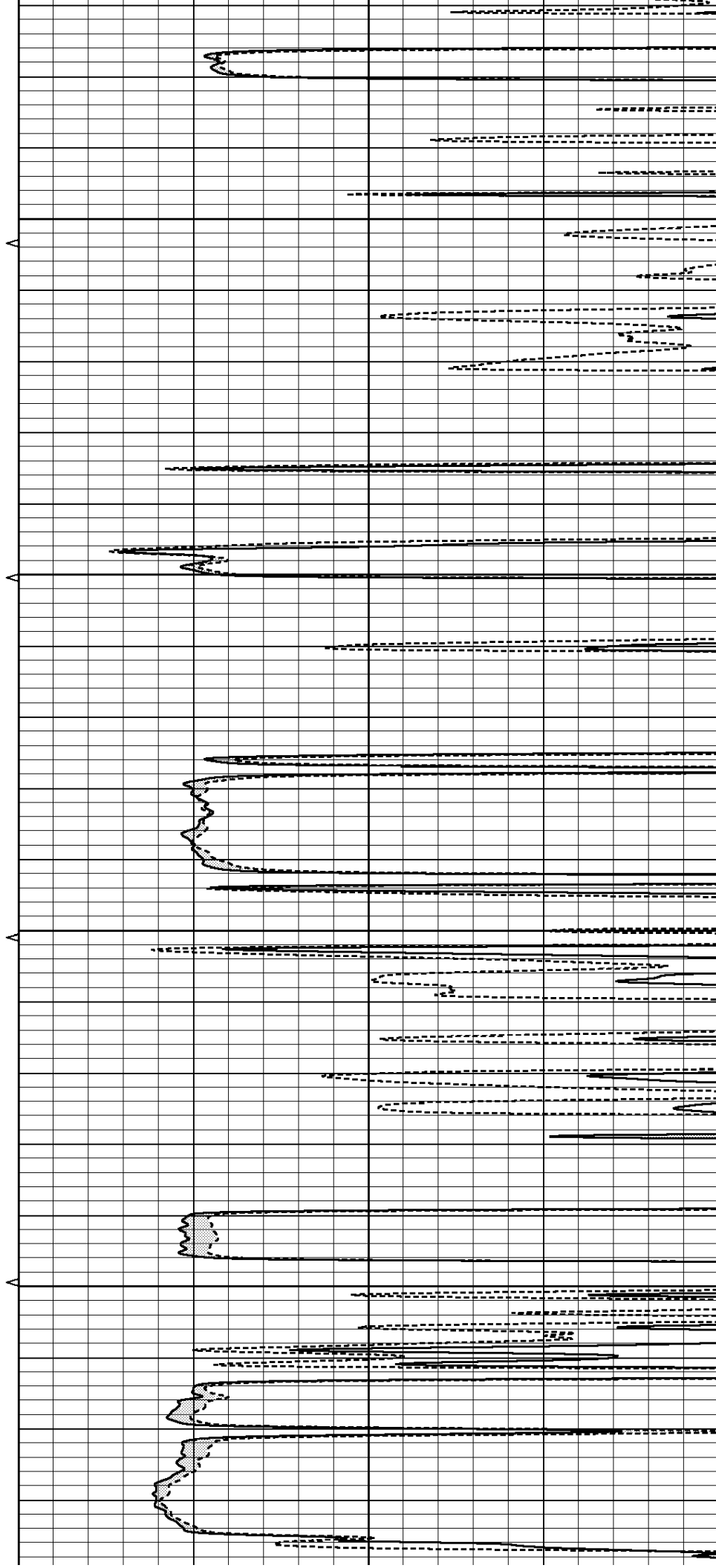


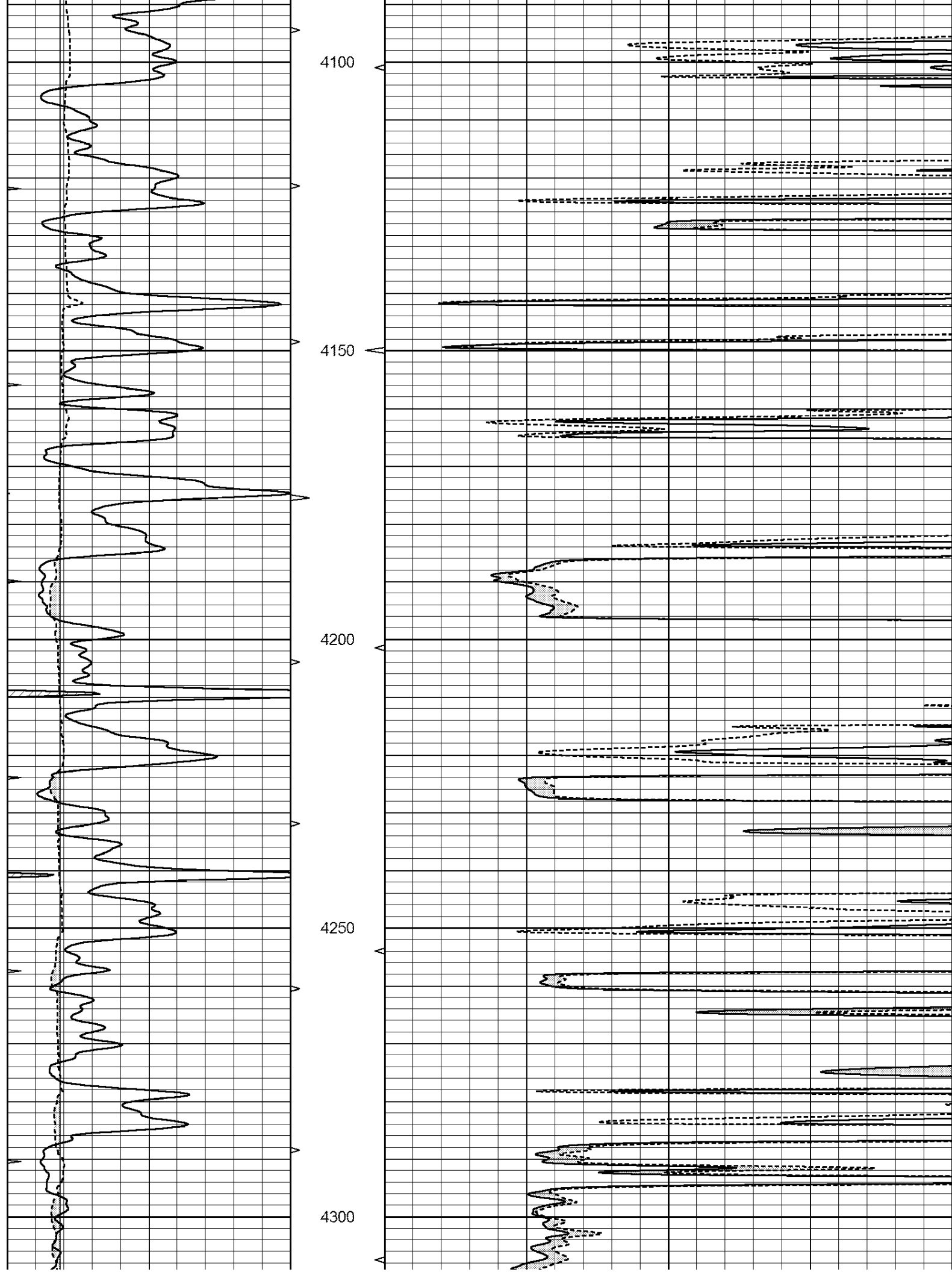
3900

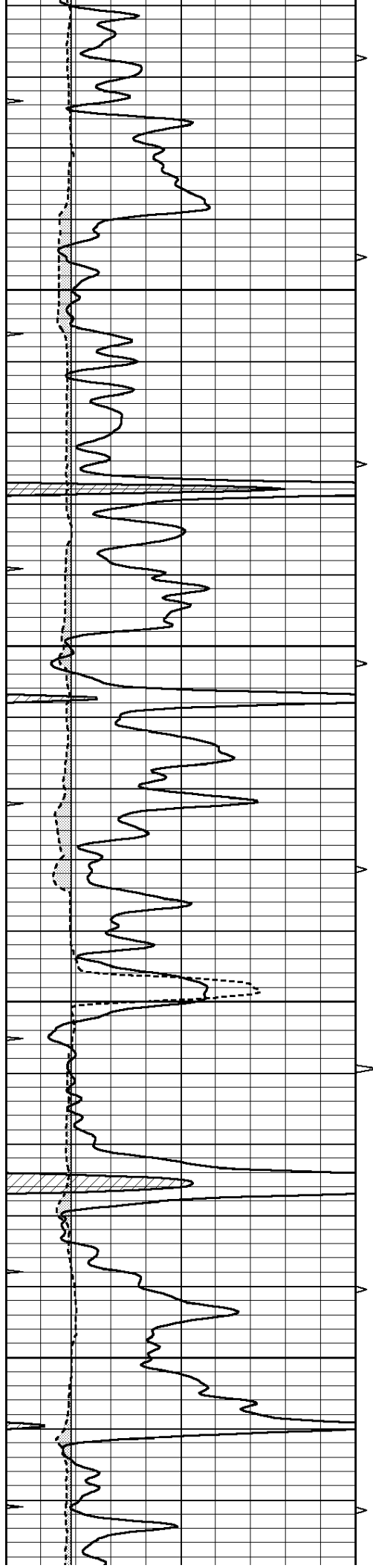
3950

4000

4050





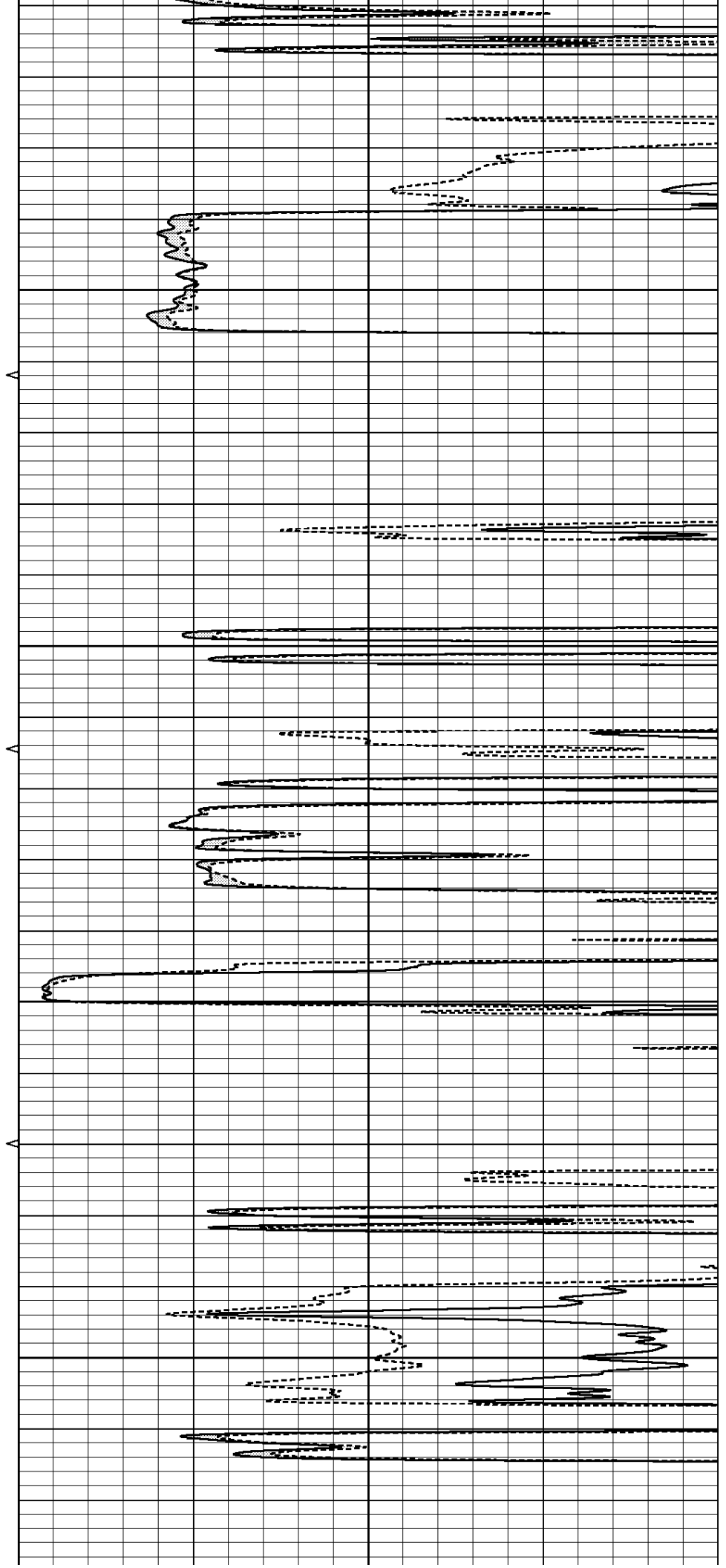


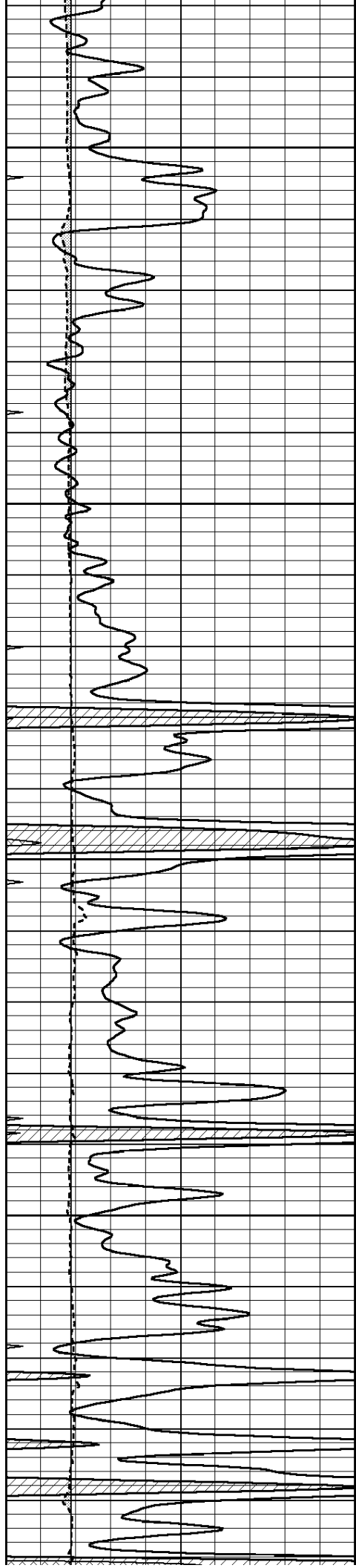
4350

4400

4450

4500



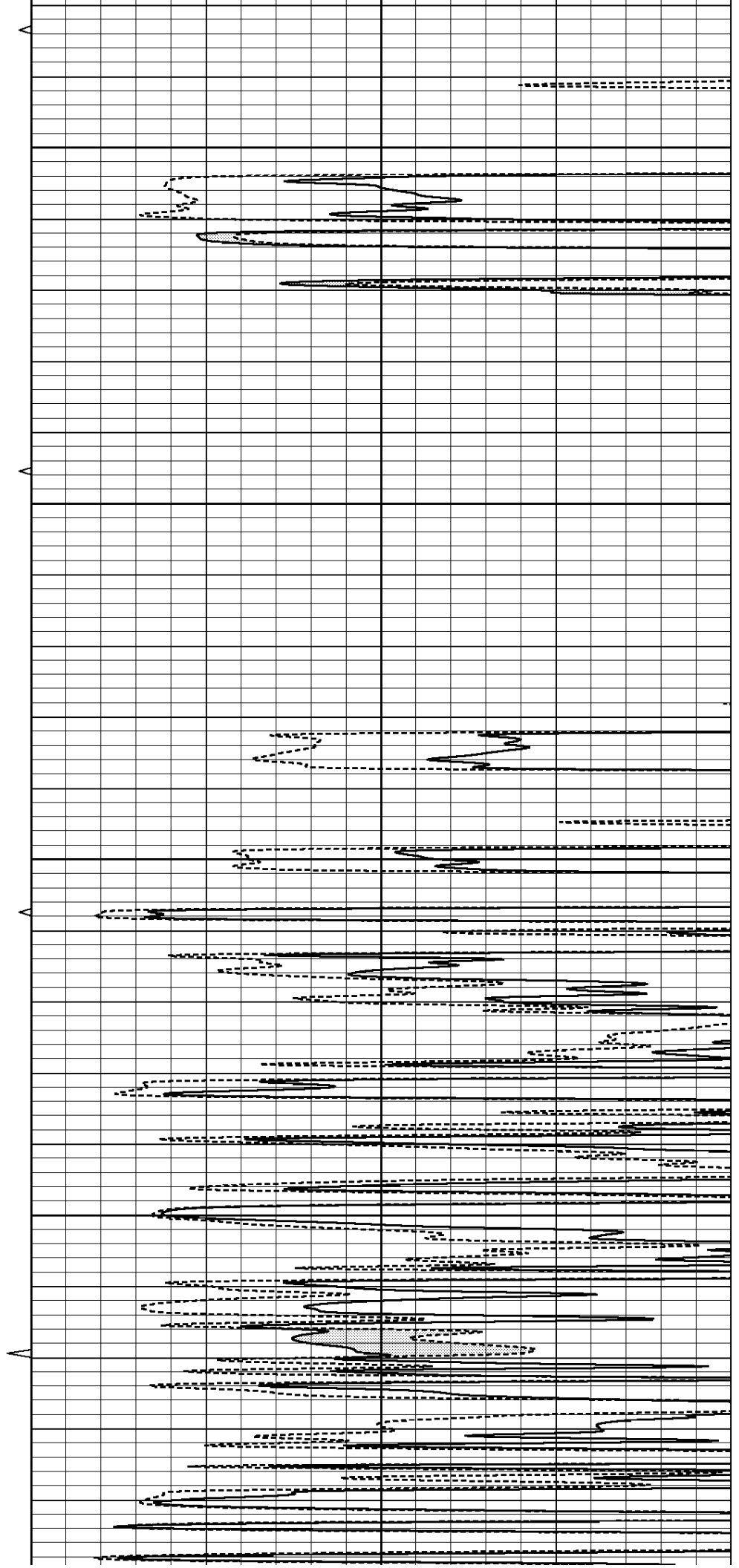


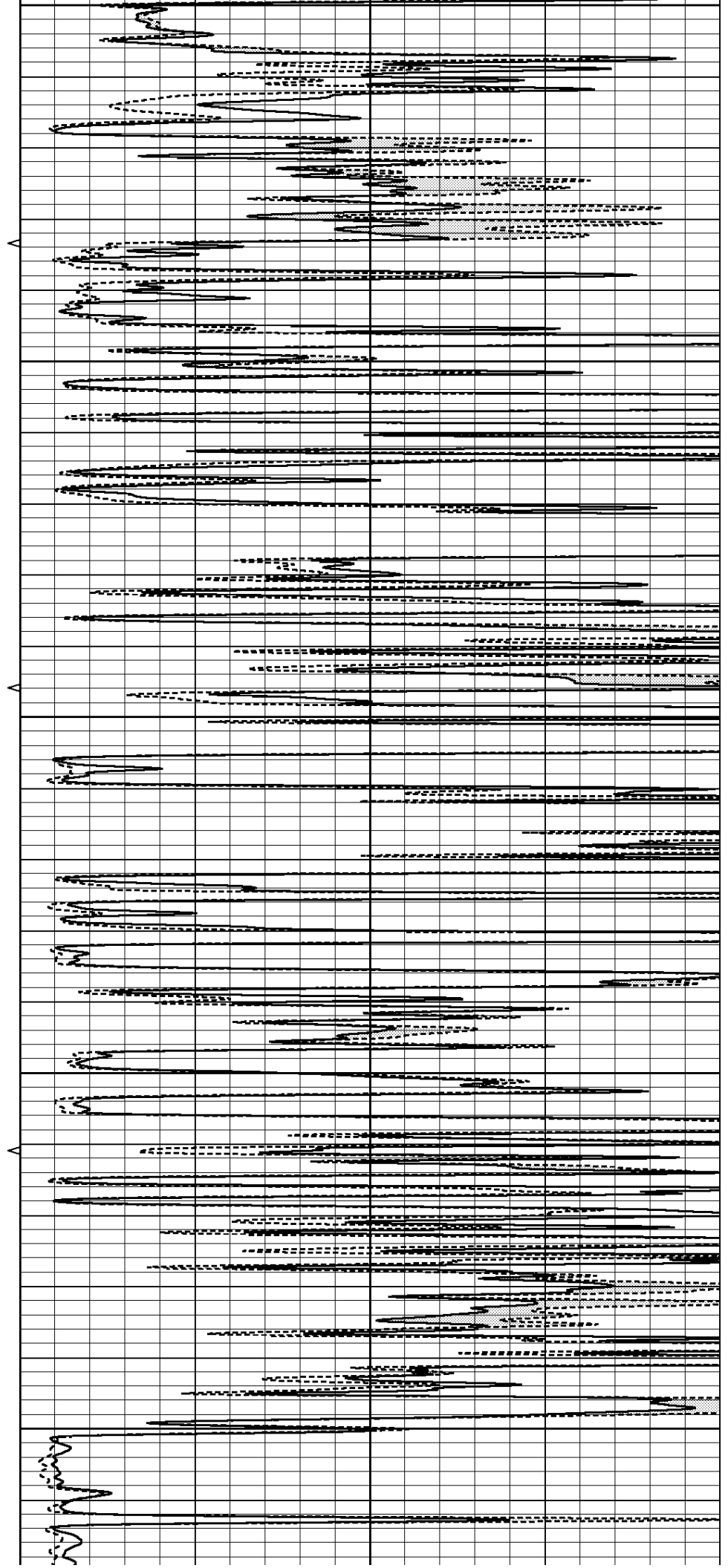
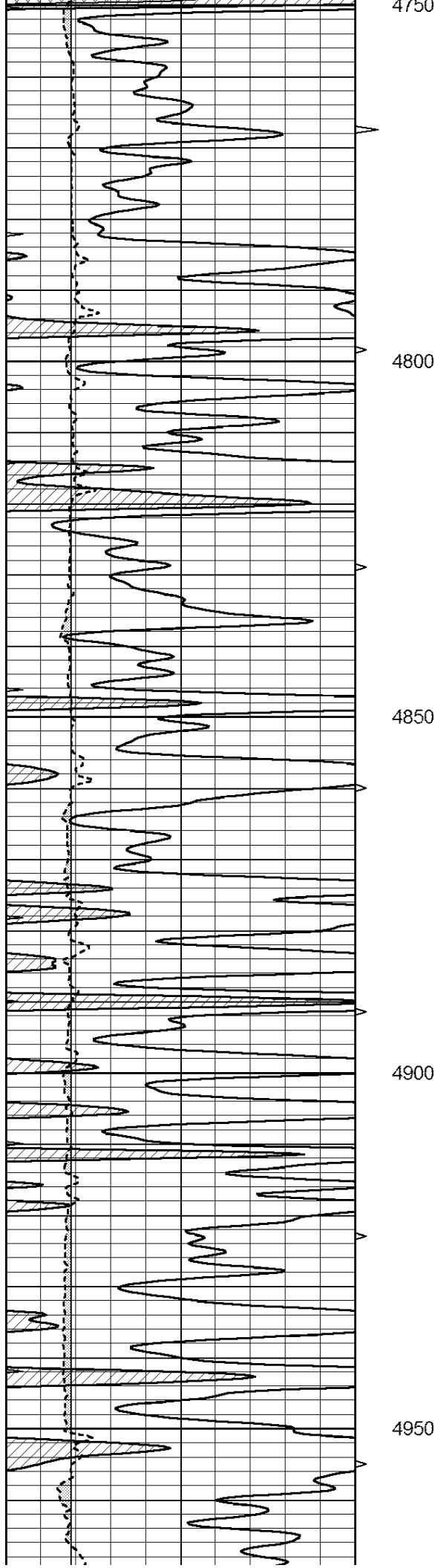
4550

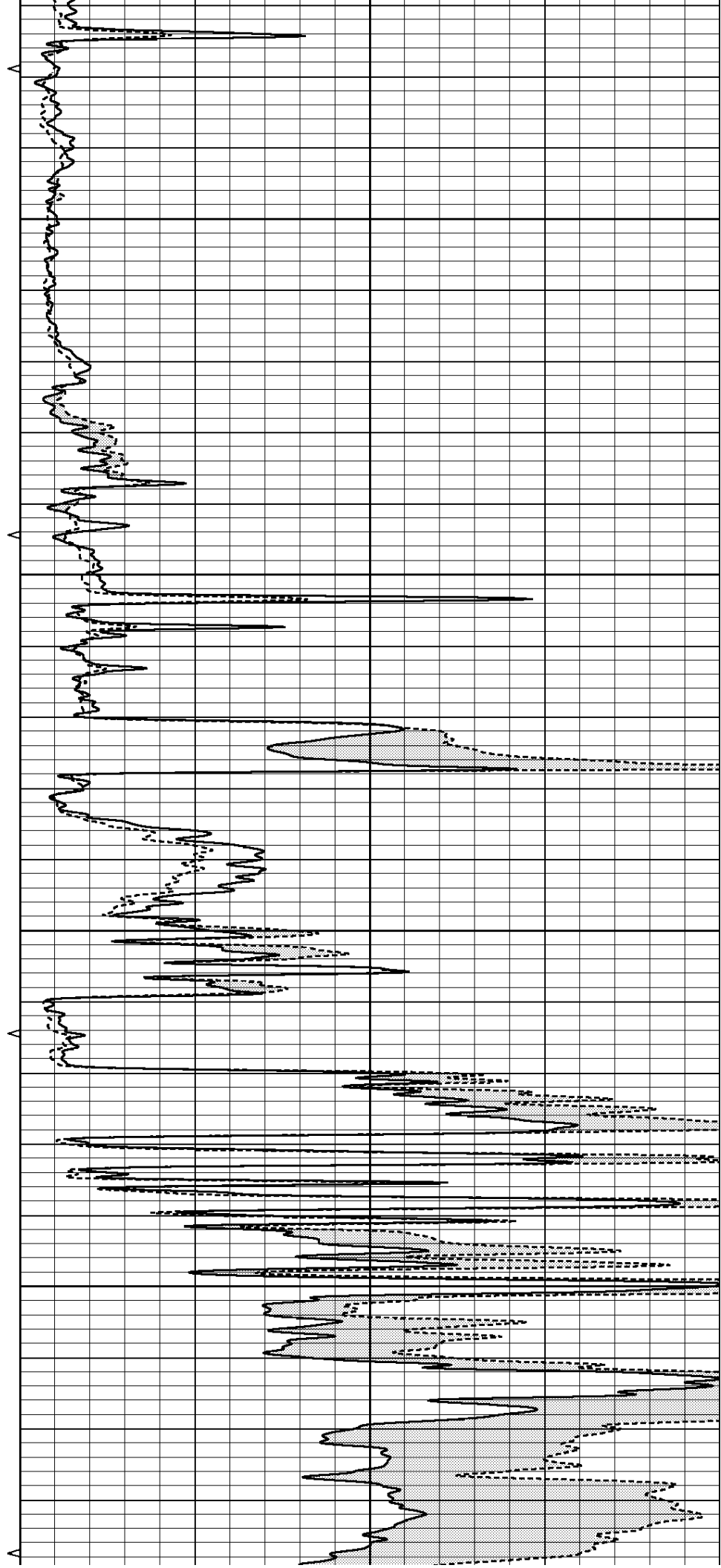
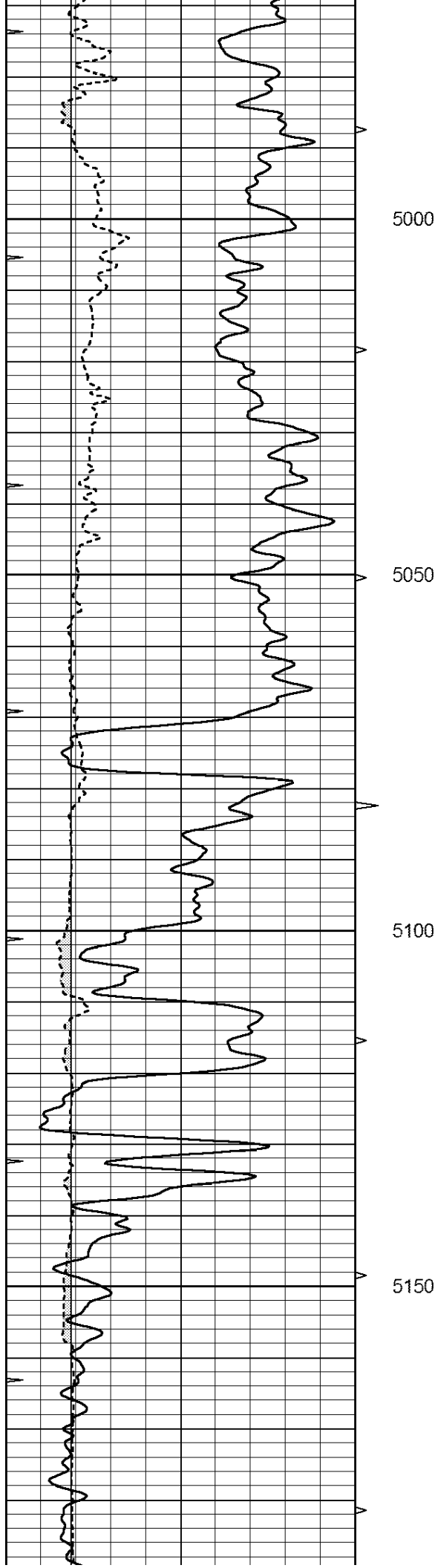
4600

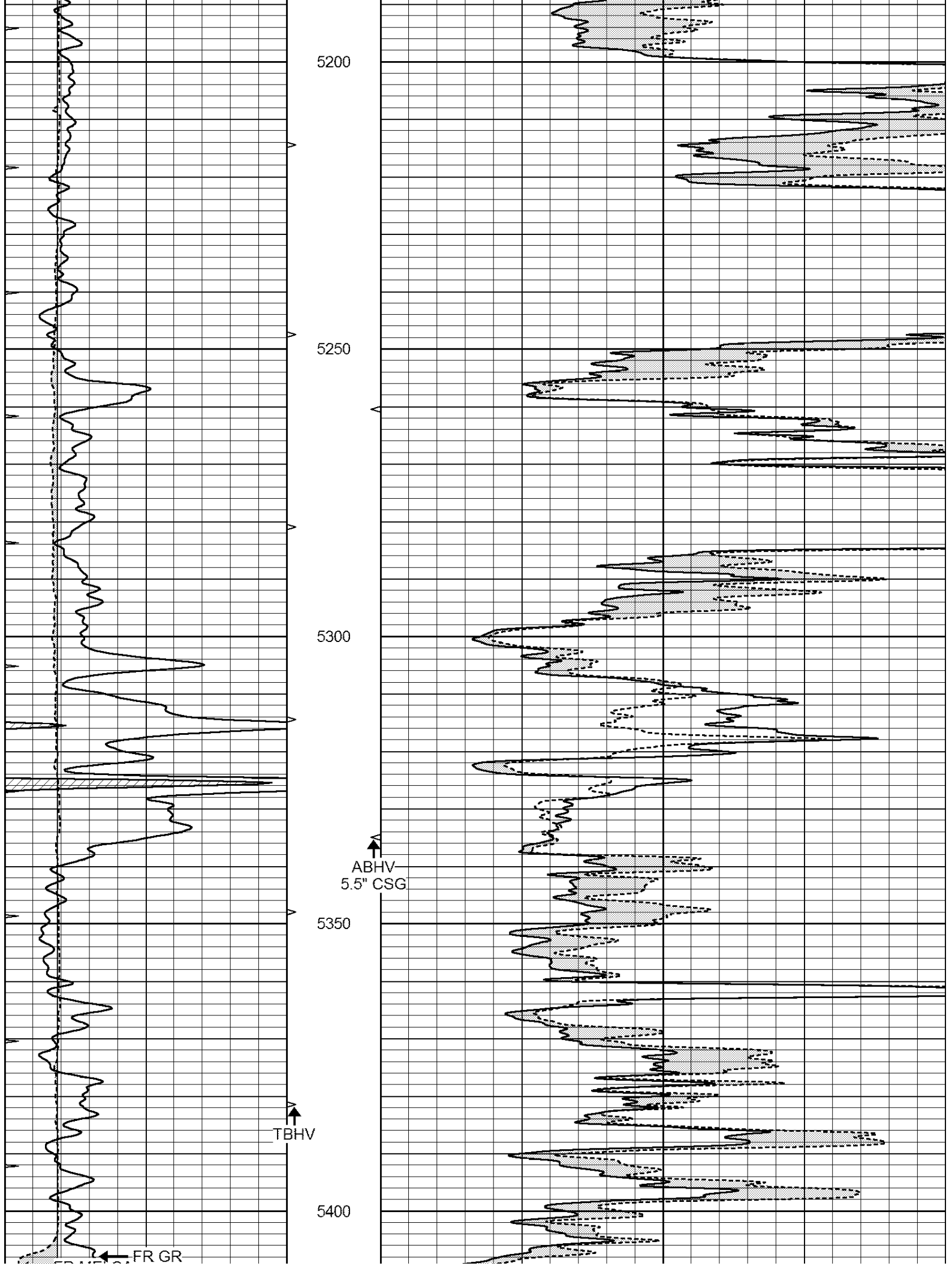
4650

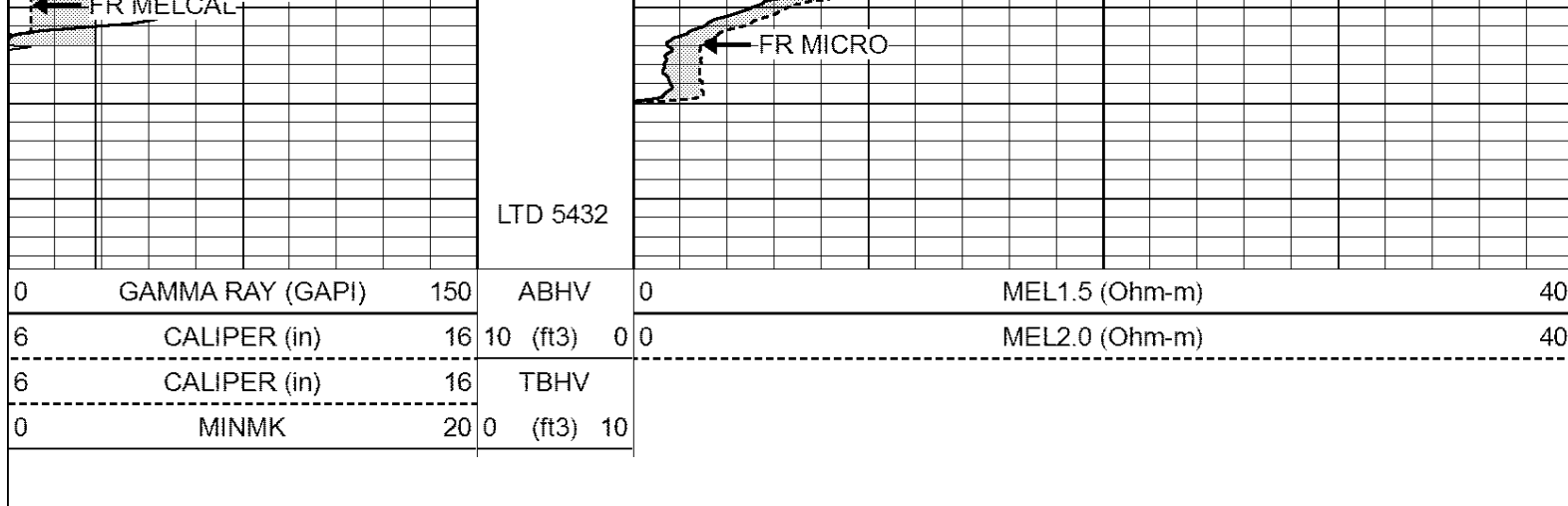
4700









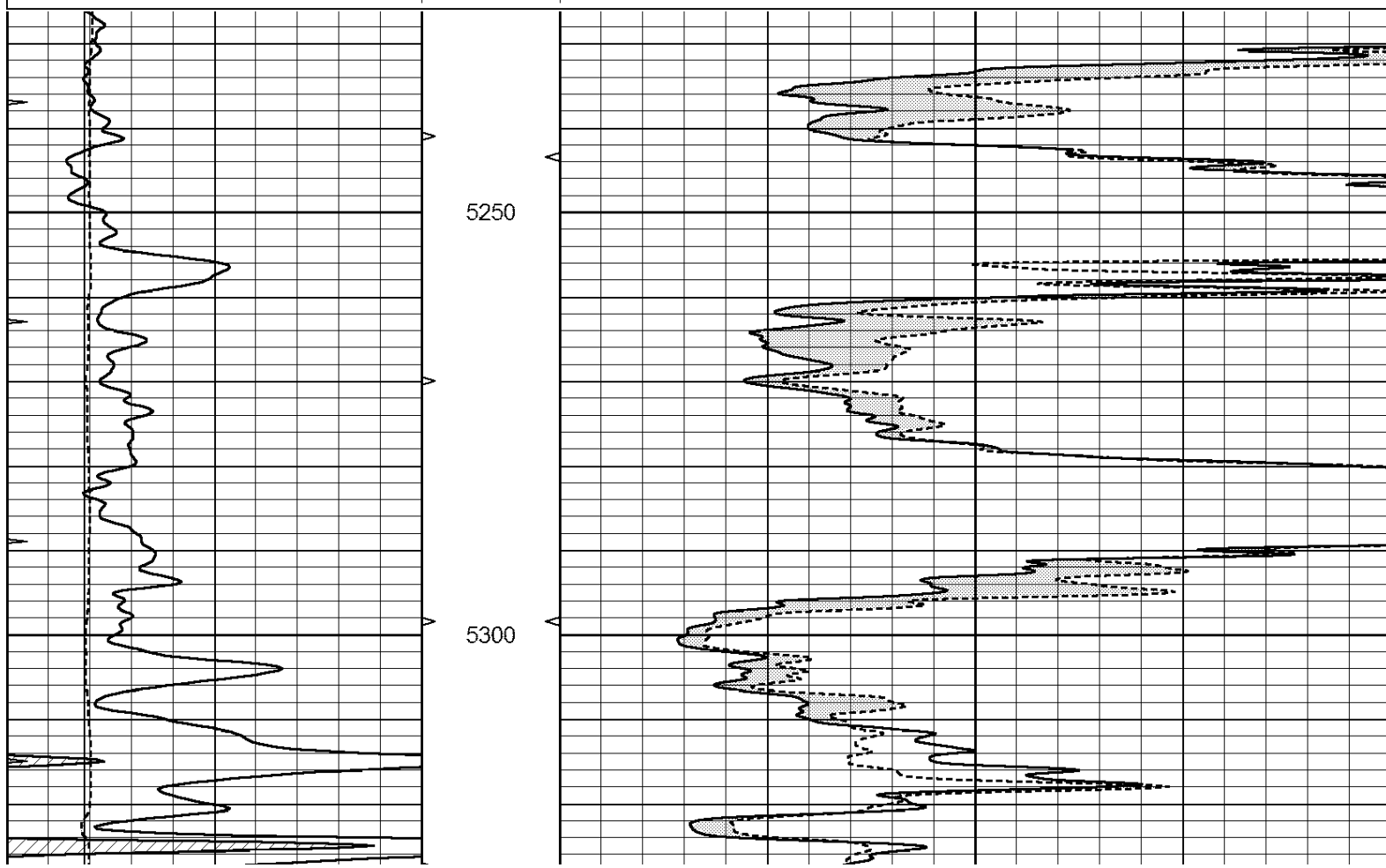


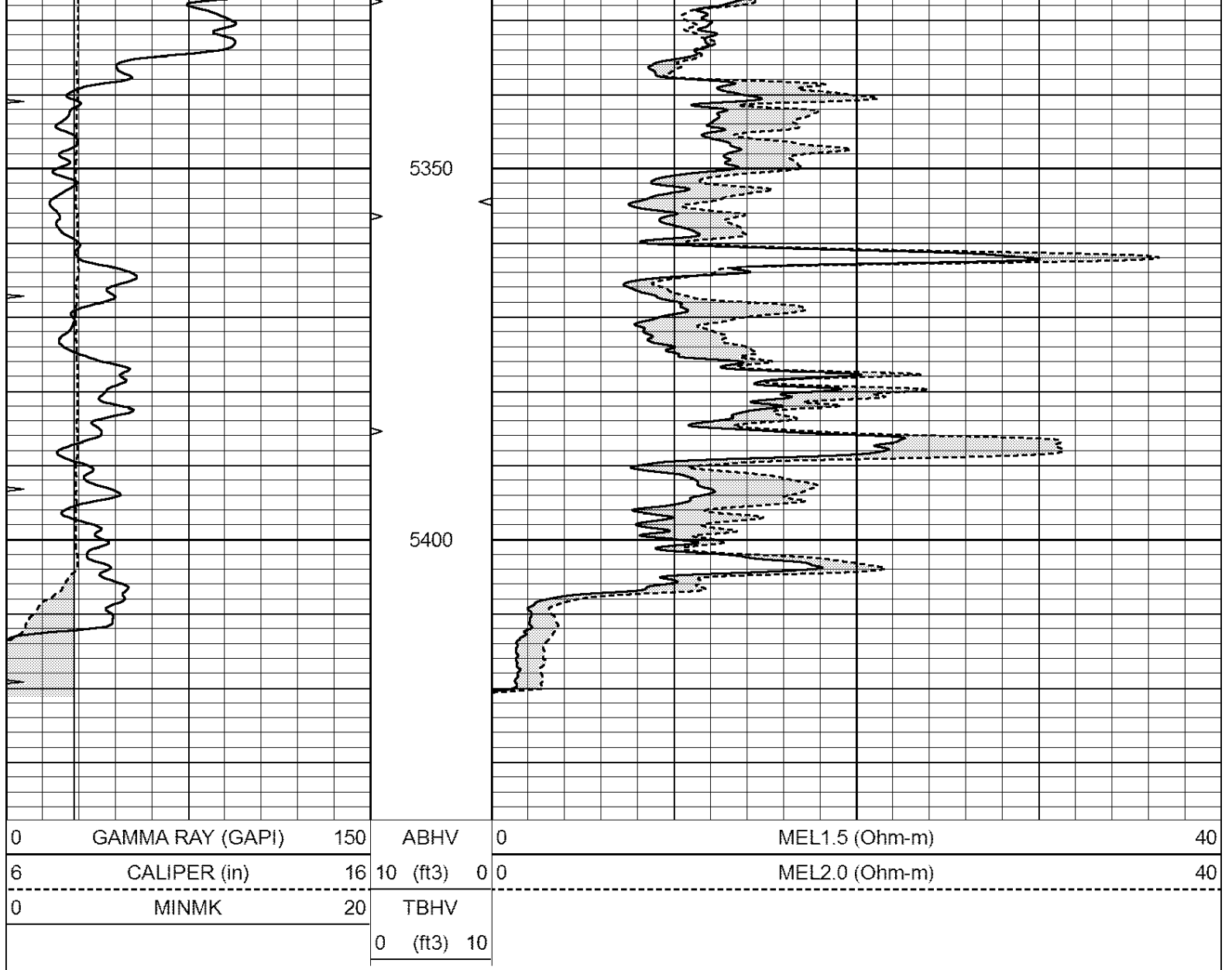
**COMPLETION
& PRODUCTION
SERVICES CO.**

REPEAT SECTION

Database File: 009798pe.db
 Dataset Pathname: pass6.3
 Presentation Format: _micro
 Dataset Creation: Tue Jan 08 16:03:28 2013 by Calc Open-Cased 090629
 Charted by: Depth in Feet scaled 1:240

0	GAMMA RAY (GAPI)	150	ABHV	0	MEL1.5 (Ohm-m)	40
6	CALIPER (in)	16	10 (ft3)	0 0	MEL2.0 (Ohm-m)	40
0	MINMK	20	TBHV			
			0 (ft3)	10		





Calibration Report			
Database File:	009798pe.db		
Dataset Pathname:	pass6.3		
Dataset Creation:	Tue Jan 08 16:03:28 2013 by Calc Open-Cased 090629		
MICRO Calibration Report			
Serial Number:	MICRO3		
Tool Model:	PROBE		
Performed:	Thu Nov 17 03:06:31 2011		
Caliper Calibration:	Gain=3.916	Offset=-8.671	
References	Low Cal	High Cal	
Readings	8.000	14.000	
	4.257	5.789	
1.5" Calibration:	Gain=250.000	Offset=-1.200	
References	Low Cal	High Cal	
Readings	0.000	20.000	
	0.004	0.228	
2" Calibration:	Gain=180.000	Offset=-1.220	
	Low Cal	High Cal	

References	0.000	20.000
Readings	0.005	0.175
Gamma Ray Calibration Report		
Serial Number:	#8	
Tool Model:	OPEN	
Performed:	Mon Jun 13 16:56:43 2011	
Calibrator Value:	150.0	GAPI
Background Reading:	0.0	cps
Calibrator Reading:	175.0	cps
Sensitivity:	0.8371	GAPI/cps