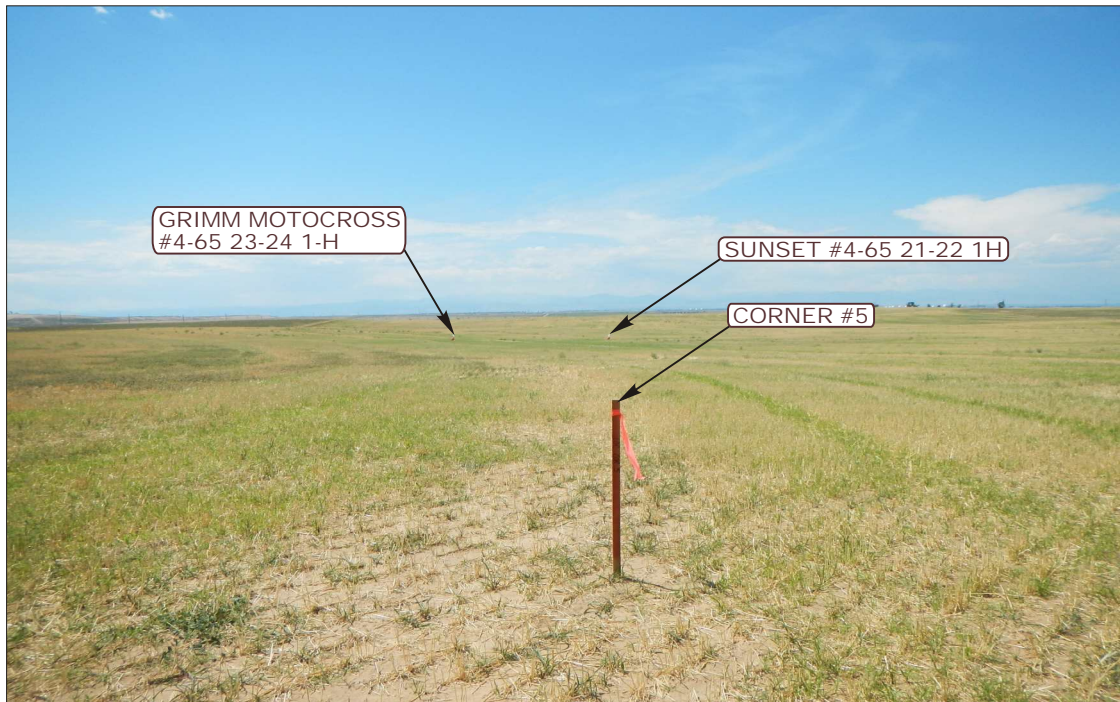


# ConocoPhillips Company

**SUNSET #4-65 21-22 1H & GRIMM MOTOCROSS #4-65 23-24 1H**  
**LOCATED IN ARAPAHOE COUNTY, COLORADO**  
**SECTION 22, T4S, R65W, 6th P.M.**



**PHOTO: VIEW FROM CORNER #5 TO LOCATION STAKES**

**CAMERA ANGLE: WESTERLY**



**PHOTO: VIEW FROM BEGINNING OF PROPOSED ACCESS**

**CAMERA ANGLE: NORTHERLY**



- Since 1964 -

**UE&S**

Uintah Engineering & Land Surveying  
85 South 200 East Vernal, Utah 84078  
(435) 789-1017 \* FAX (435) 789-1813

**LOCATION PHOTOS**

**08** **23** **13**  
MONTH DAY YEAR

TAKEN BY: J.H.

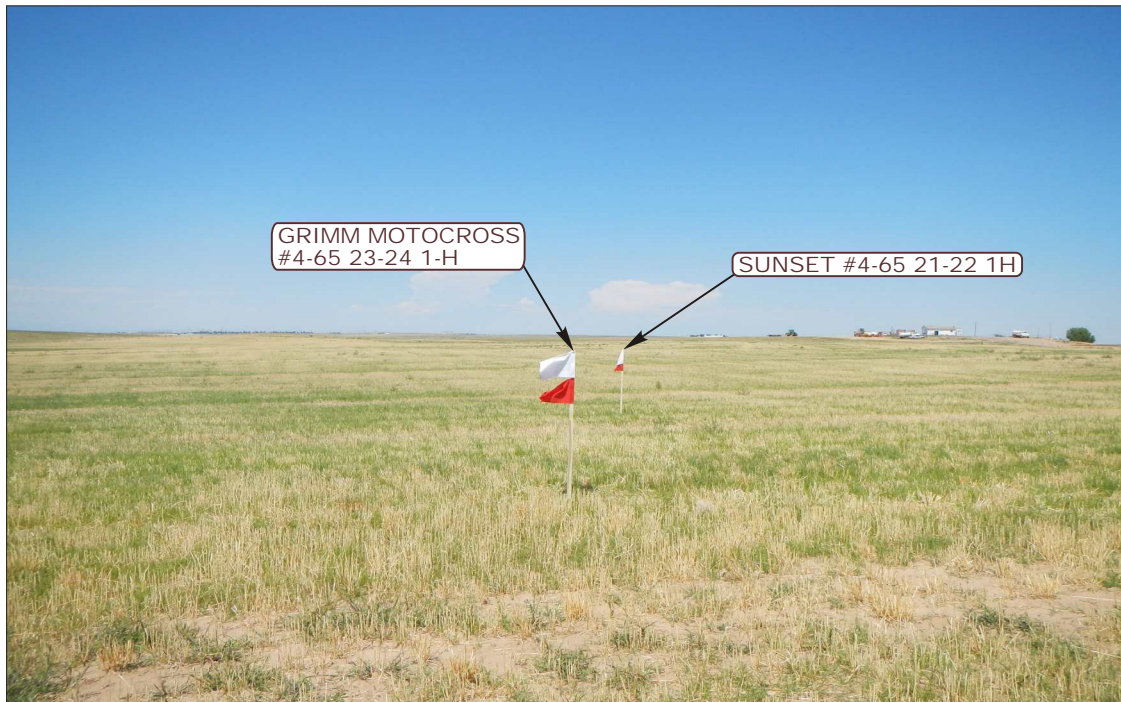
DRAWN BY: J.L.H.

REVISED: 00-00-00

**PHOTO**  
**P1**

# ConocoPhillips Company

**SUNSET #4-65 21-22 1H & GRIMM MOTOCROSS #4-65 23-24 1H**  
**LOCATED IN ARAPAHOE COUNTY, COLORADO**  
**SECTION 22, T4S, R65W, 6th P.M.**



**PHOTO: VIEW OF LOCATION STAKES**

**CAMERA ANGLE: NORTHERLY**



**PHOTO: VIEW OF LOCATION STAKES**

**CAMERA ANGLE: EASTERLY**



- Since 1964 -

**UE&S**

Uintah Engineering & Land Surveying  
85 South 200 East Vernal, Utah 84078  
(435) 789-1017 \* FAX (435) 789-1813

**LOCATION PHOTOS**

**08** **23** **13**  
MONTH DAY YEAR

TAKEN BY: J.H.

DRAWN BY: J.L.H.

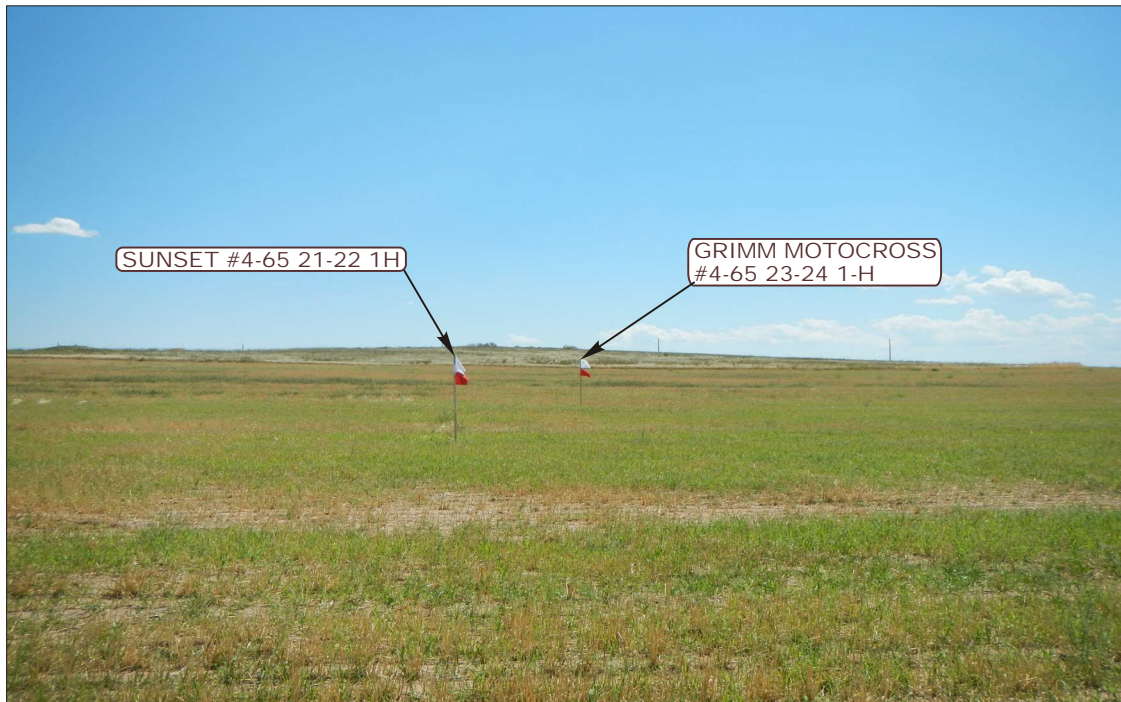
REVISED: 00-00-00

**PHOTO**  
**P2**



# ConocoPhillips Company

**SUNSET #4-65 21-22 1H & GRIMM MOTOCROSS #4-65 23-24 1H**  
**LOCATED IN ARAPAHOE COUNTY, COLORADO**  
**SECTION 22, T4S, R65W, 6th P.M.**



**PHOTO: VIEW OF LOCATION STAKES**

**CAMERA ANGLE: SOUTHERLY**



**PHOTO: VIEW OF LOCATION STAKES**

**CAMERA ANGLE: WESTERLY**



- Since 1964 -

**U  
E  
S**

**Uintah Engineering & Land Surveying**

85 South 200 East Vernal, Utah 84078  
(435) 789-1017 \* FAX (435) 789-1813

**LOCATION PHOTOS**

**08** **23** **13**  
MONTH DAY YEAR

TAKEN BY: J.H.

DRAWN BY: J.L.H.

REVISED: 00-00-00

**PHOTO**  
**P3**