

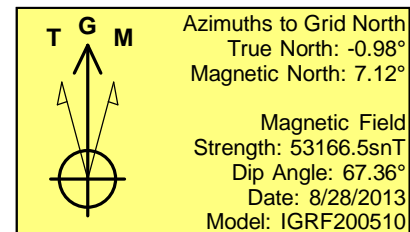
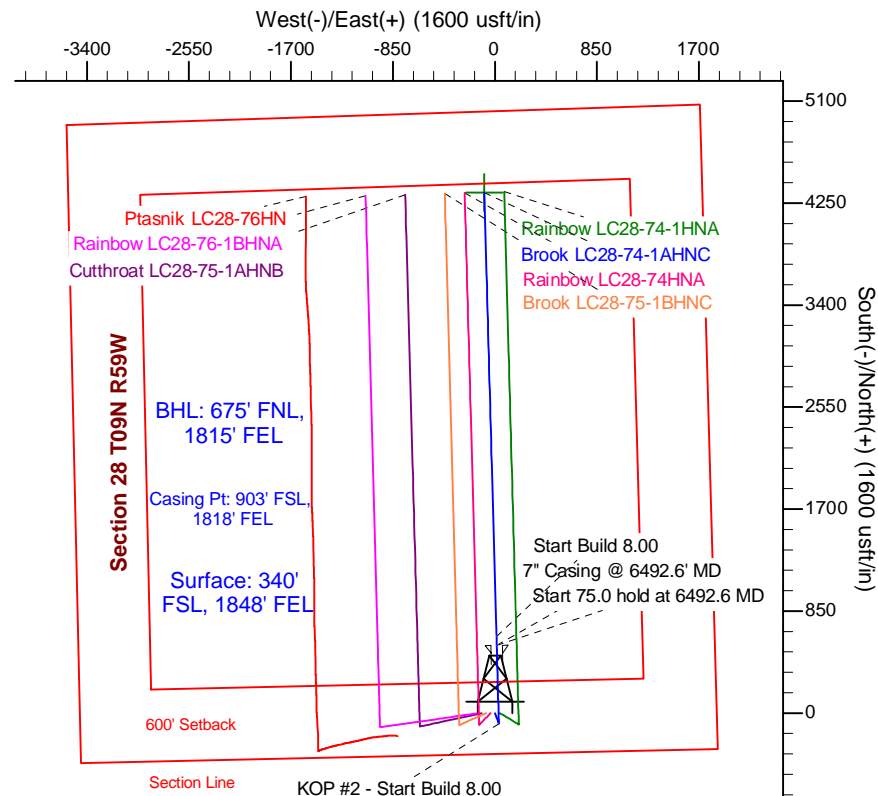
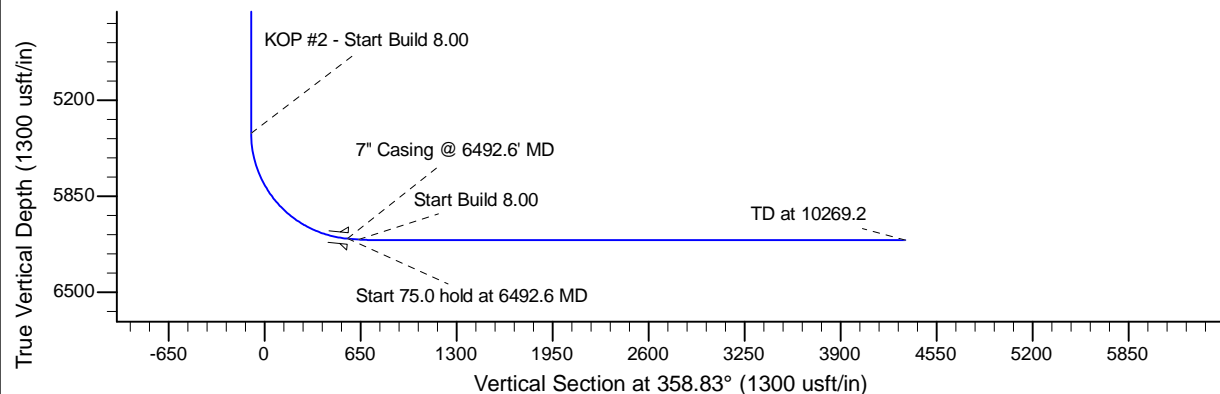
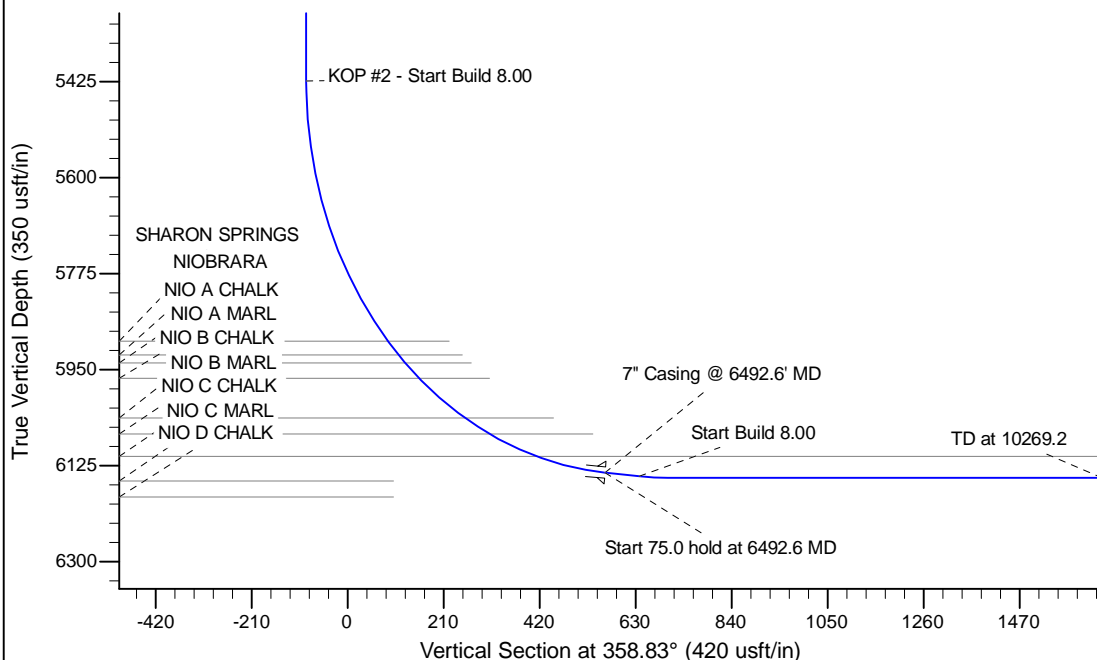
Project: Wattenberg Field
Site: LC (Sec.28-T09N-R59W) Weld County, CO
Well: Brook LC28-74-1AHNC
Wellbore: Original Drilling
Design: APD - Rev 0

Northern Region Drilling - Working

Geodetic System: US State Plane 1983
Datum: North American Datum 1983
Ellipsoid: GRS 1980
Zone: Colorado Northern Zone
System Datum: Mean Sea Level

SECTION DETAILS

Sec	MD	Inc	Azi	TVD	+N/-S	+E/-W	Dleg	TFace	VFace	Target
1	0.0	0.00	0.00	0.0	0.0	0.0	0.00	0.00	0.0	
2	1500.0	0.00	0.00	1500.0	0.0	0.0	0.00	0.00	0.0	
3	2012.1	10.24	159.86	2009.4	-42.9	15.7	2.00	159.86	-43.2	
4	2037.8	10.24	159.86	2034.6	-47.1	17.3	0.00	0.00	-47.5	
5	2549.9	0.00	0.00	2544.0	-90.0	33.0	2.00	180.00	-90.7	
6	5430.1	0.00	0.00	5424.3	-90.0	33.0	0.00	0.00	-90.7	
7	6492.6	85.00	358.43	6137.7	563.5	15.1	8.00	358.43	563.1	
8	6567.6	85.00	358.43	6144.3	638.2	13.1	0.00	0.00	637.8	
9	6630.1	90.00	358.43	6147.0	700.6	11.4	8.00	0.00	700.2	
10	10269.2	90.00	358.43	6147.0	4338.3	-88.2	0.00	0.00	4339.2	Brook LC28-74-1AHNC BHL 675'FNL, 1815'FEL



WELL DETAILS: Brook LC28-74-1AHNC

		Ground Level: 4843.0			
		Northing	Easting	Latitude	Longitude
0.0	0.0	1506937.42	3421370.06	40.715020	-103.979920

Plan: APD - Rev 0 (Brook LC28-74-1AHNC/Original Drilling)

Created By: Shailey Jewell Date: 10:12, September 03 2013

Checked: _____ Date: _____

Reviewed: _____ Date: _____

Approved: _____ Date: _____