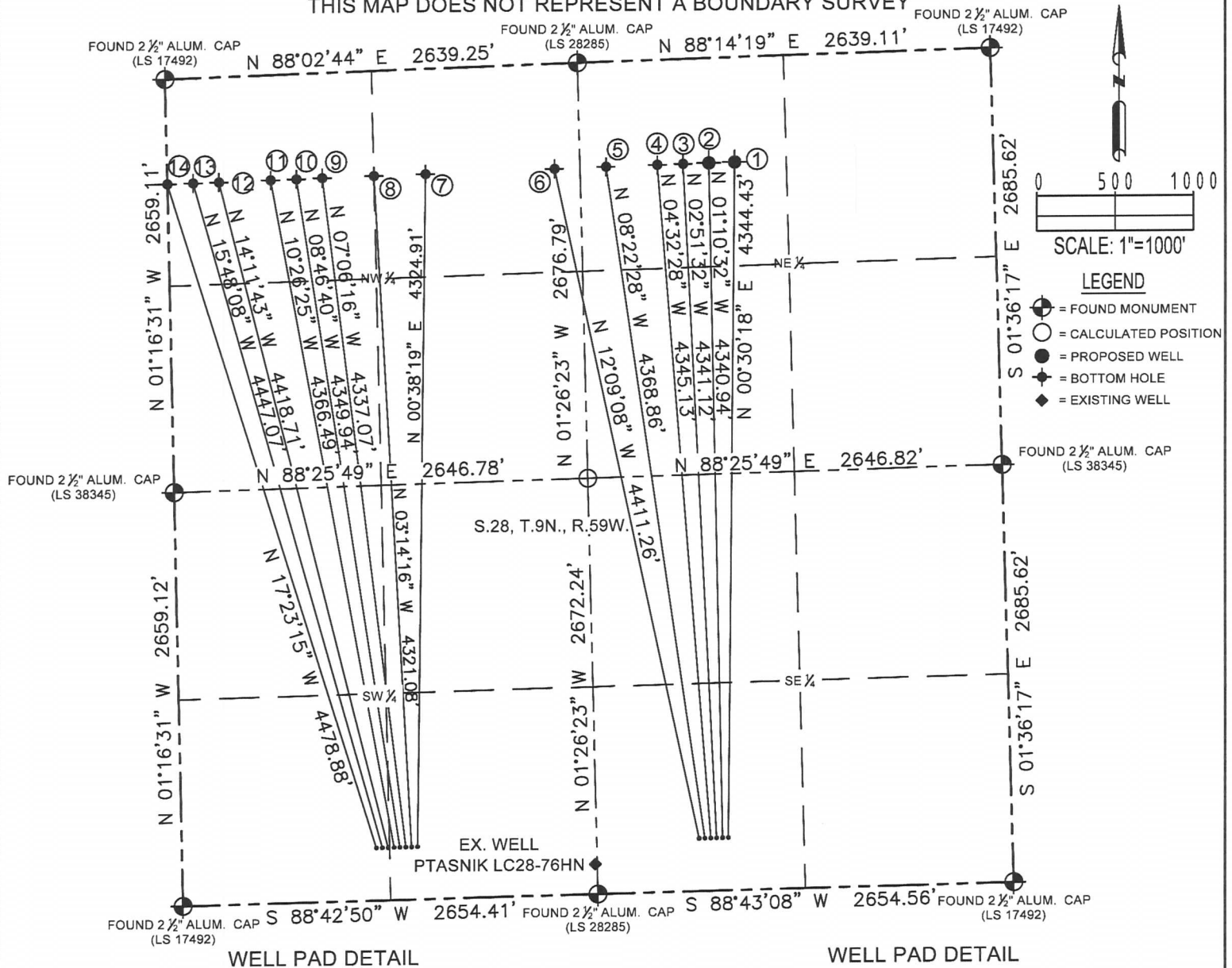


# MULTI-WELL PLAN

RAINBOW LC28-74-1HNA PAD

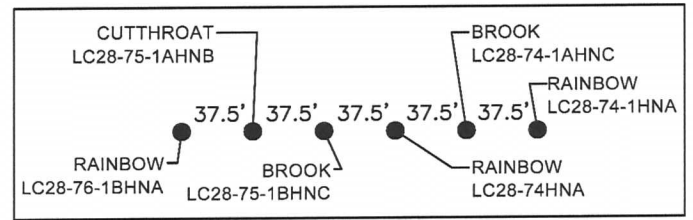
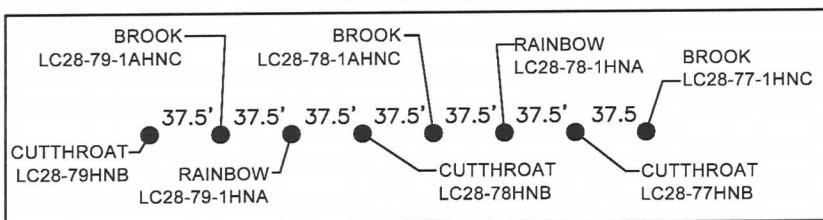
THIS MAP DOES NOT REPRESENT A BOUNDARY SURVEY

SECTION: 28  
TOWNSHIP: 9N  
RANGE: 59W



WELL PAD DETAIL

WELL PAD DETAIL



Well Number	Well Name	Bottom Hole	Depth	Lat	Long
1	BROOK LC28-79-1AHNC	Rainbow LC28-74-1HNA	675' FNL	1650' FEL	LAT-40.72694°N LONG-103.97937°W
2	BROOK LC28-78-1AHNC	Rainbow LC28-74-1AHNC	675' FNL	1815' FEL	LAT-40.72693°N LONG-103.97997°W
3	RAINBOW LC28-78-1HNA	Rainbow LC28-74HNA	675' FNL	1980' FEL	LAT-40.72693°N LONG-103.98056°W
4	BROOK LC28-77-1HNC	BROOK LC28-75-1BHNC	675' FNL	2145' FEL	LAT-40.72692°N LONG-103.98116°W
5	CUTTHROAT LC28-75-1AHNB	CUTTHROAT LC28-75-1AHNB	675' FNL	2475' FEL	LAT-40.72691°N LONG-103.98235°W
6	BROOK LC28-74-1AHNC	Rainbow LC28-76-1BHNA	675' FNL	2477' FWL	LAT-40.72690°N LONG-103.98354°W
7	RAINBOW LC28-74-1HNA	BROOK LC28-77-1HNC	675' FNL	1650' FWL	LAT-40.72686°N LONG-103.98652°W
8	CUTTHROAT LC28-77HNB	CUTTHROAT LC28-79HNB	675' FNL	1320' FWL	LAT-40.72684°N LONG-103.98772°W
9	RAINBOW LC28-78-1HNA	RAINBOW LC28-79-1AHNC	675' FNL	990' FWL	LAT-40.72683°N LONG-103.98891°W
10	BROOK LC28-78-1AHNC	BROOK LC28-78-1AHNC	675' FNL	825' FWL	LAT-40.72682°N LONG-103.98950°W
11	CUTTHROAT LC28-78HNB	CUTTHROAT LC28-78HNB	675' FNL	660' FWL	LAT-40.72681°N LONG-103.99010°W
12	RAINBOW LC28-79-1HNA	RAINBOW LC28-79-1HNA	675' FNL	330' FWL	LAT-40.72679°N LONG-103.99129°W
13	BROOK LC28-79-1AHNC	BROOK LC28-79-1AHNC	675' FNL	165' FWL	LAT-40.72679°N LONG-103.99188°W
14	CUTTHROAT LC28-79HNB	CUTTHROAT LC28-79HNB	675' FNL	0' FWL	LAT-40.72678°N LONG-103.99248°W

SHEET 1 OF 2

FIELD DATE: 10-01-13

DRAWING DATE: 10-24-13

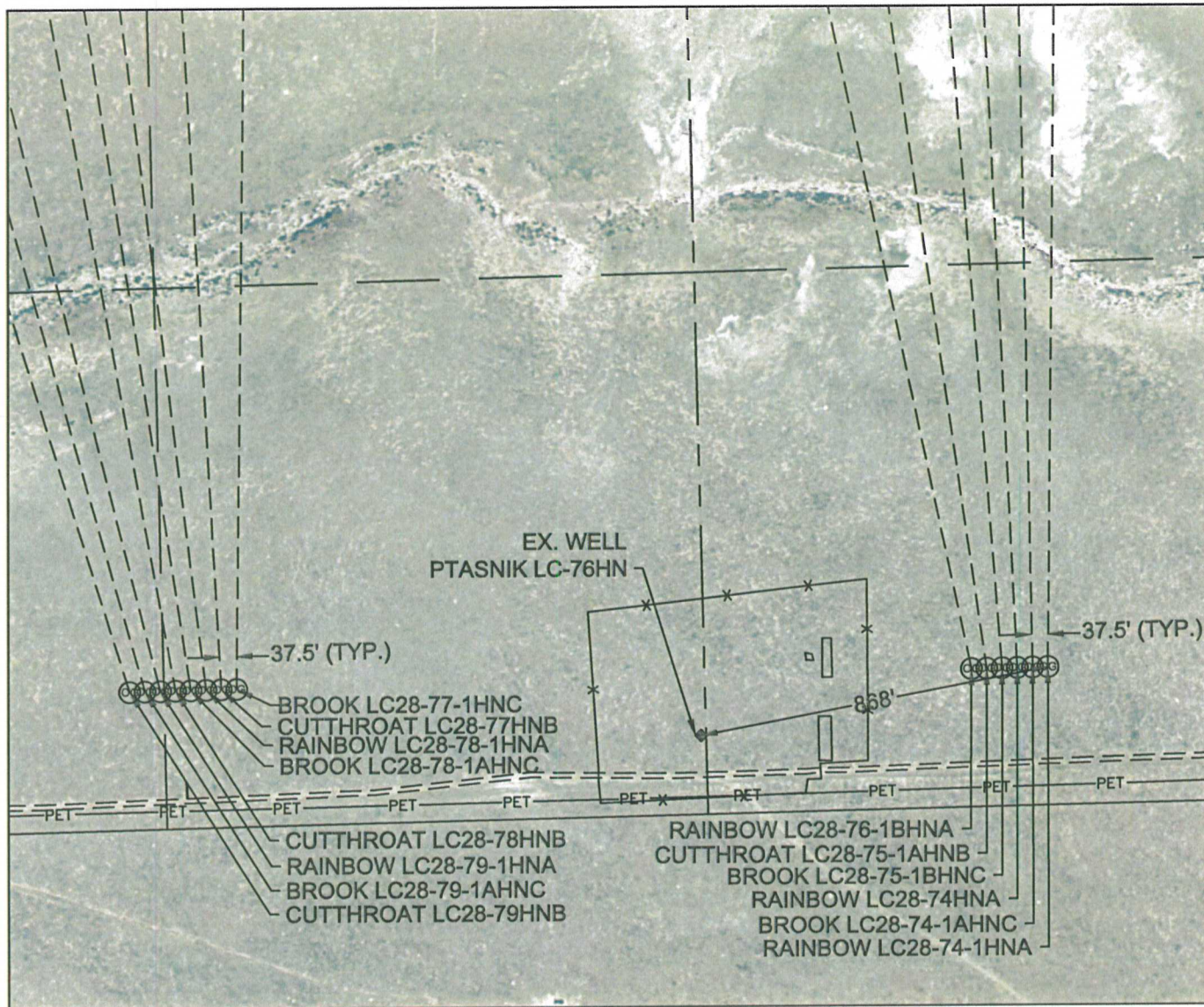
DRAWN BY: CLM

CHECKED BY: TJN

# MULTI-WELL PLAN

## RAINBOW LC28-74-1HNA PAD

SECTION: 28  
TOWNSHIP: 9N  
RANGE: 59W



FIELD  
DATE:  
10-01-13

DRAWING  
DATE:  
10-15-13

DRAWN BY:  
CLM

CHECKED BY:  
TJN

SHEET 2 OF 2

