

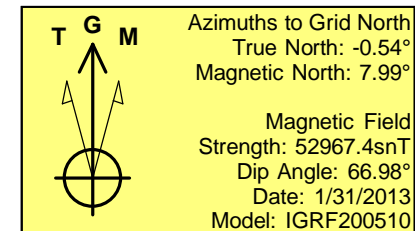
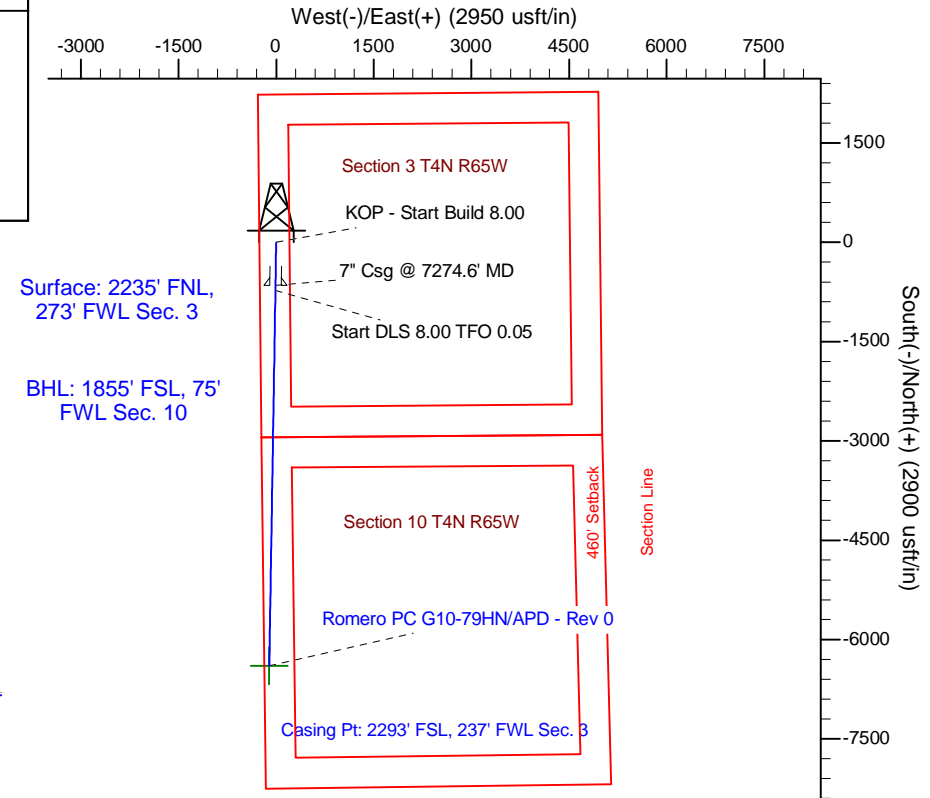
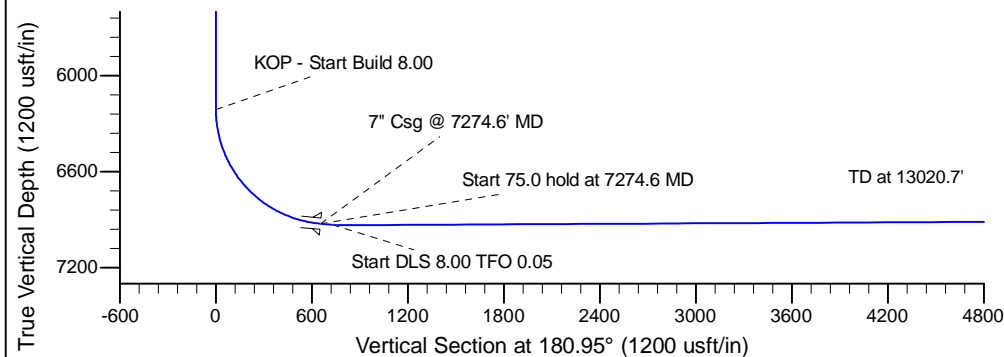
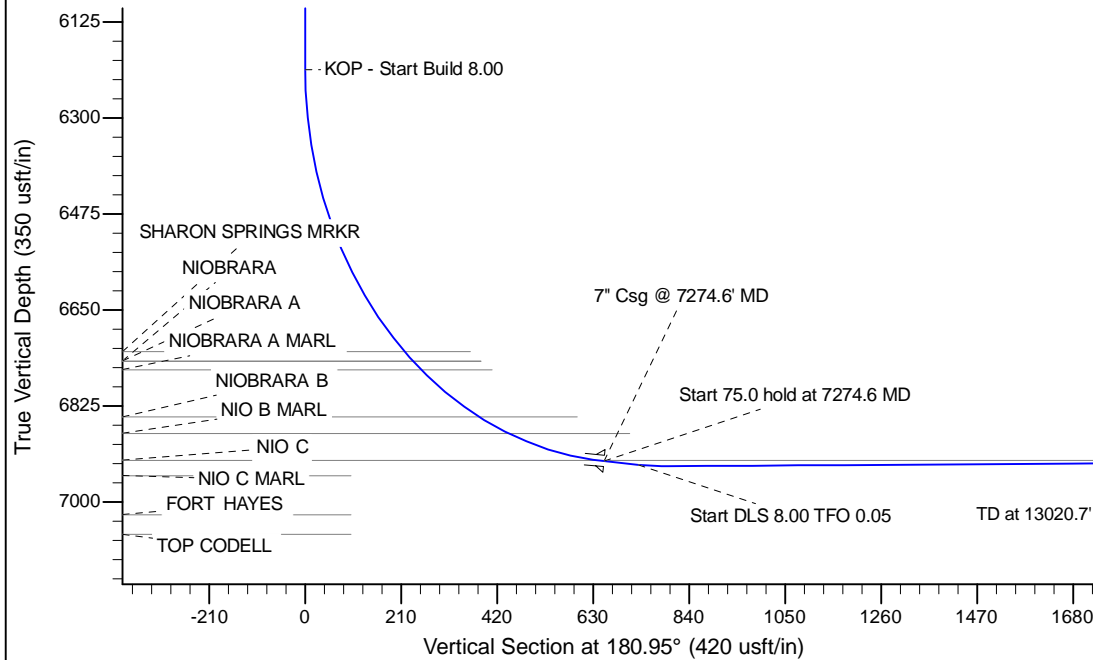
Project: Wattenberg Field
 Site: G (Sec.3-T04N-R65W) Weld County, CO
 Well: Romero PC G10-79HN
 Wellbore: Original Drilling
 Design: APD - Rev 0

Northern Region Drilling

Geodetic System: US State Plane 1983
 Datum: North American Datum 1983
 Ellipsoid: GRS 1980
 Zone: Colorado Northern Zone
 System Datum: Mean Sea Level

SECTION DETAILS

Sec	MD	Inc	Azi	TVD	+N/-S	+E/-W	Dleg	TFace	Vsect	Target
1	0.0	0.00	0.00	0.0	0.0	0.0	0.00	0.00	0.0	
2	6212.1	0.00	0.00	6212.1	0.0	0.0	0.00	0.00	0.0	
3	7274.6	85.00	180.95	6925.6	-653.7	-10.8	8.00	180.95	653.8	
4	7349.6	85.00	180.95	6932.1	-728.4	-12.1	0.00	0.00	728.5	
5	7415.8	90.30	180.95	6934.8	-794.5	-13.2	8.00	0.05	794.7	
6	13020.7	90.30	180.95	6905.5	-6398.5	-106.5	0.00	0.00	6399.4	Romero PC G10-79HN BHL 1855'FSL, 75'FWL



WELL DETAILS: Romero PC G10-79HN			
Ground Level:	4670.0		
Northing	Easting	Latitude	Longitude
1368677.40	3234771.26	40.342360	-104.657750

Plan: APD - Rev 0 (Romero PC G10-79HN/Original Drilling)	
Created By: Carrie Willers	Date: 18:37, January 31 2013

OK to submit with 2A as per Noble Drilling
1/31/13 6:55