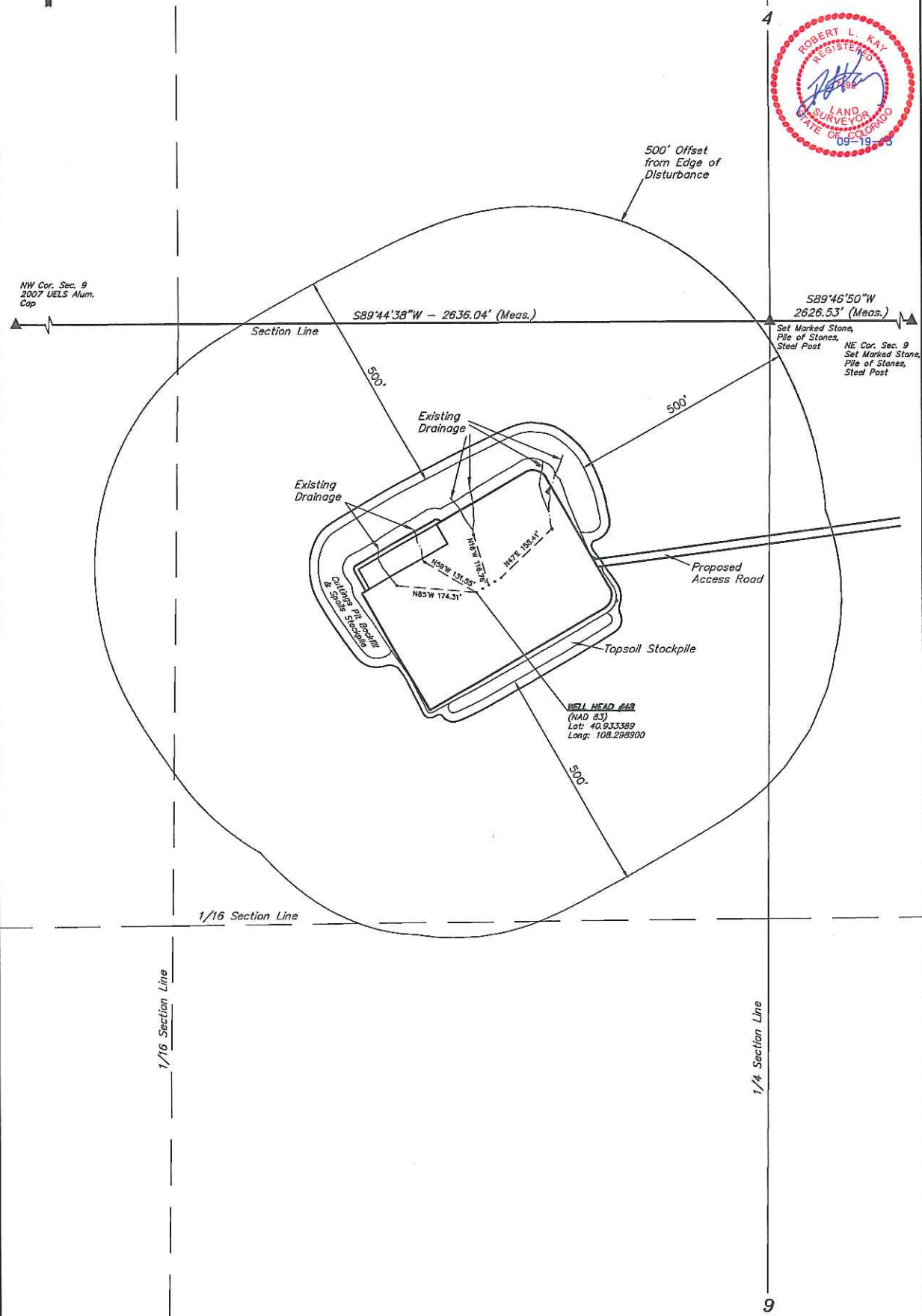




WEXPRO COMPANY
LOCATION DRAWING FOR
BW MUSSER #41, #48, #49, #58 & #59
SECTION 9, T11N, R97W, 6th P.M.
NE 1/4 NW 1/4

FIGURE #5

SCALE: 1" = 200'
DATE SURVEYED: 09-13-13
SURVEYED BY: LOUIS PENCE
DATE DRAWN: 09-19-13
DRAWN BY: M.D.



WEXPRO COMPANY

BW MUSSER #41, #48, #49, #58 & #59
SECTION 9, T11N, R97W, 6th P.M.
DATE: 09-19-13

DISTANCES FROM WELL HEAD																
WELL NAME	BUILDING		BUILDING UNIT		HIGH OCCU. BUILDING		D.O.A.A.		PUBLIC ROAD		ABOVE GROUND UTILITY		RAILROAD		PROPERTY LINE	
	DIRECTION	LENGTH	DIRECTION	LENGTH	DIRECTION	LENGTH	DIRECTION	LENGTH	DIRECTION	LENGTH	DIRECTION	LENGTH	DIRECTION	LENGTH	DIRECTION	LENGTH
CARL ALLEN 44	OVER 1 MILE		OVER 1 MILE		OVER 1 MILE		OVER 1 MILE		OVER 1 MILE		OVER 1 MILE		OVER 1 MILE		OVER 1 MILE	
CARL ALLEN 50	OVER 1 MILE		OVER 1 MILE		OVER 1 MILE		OVER 1 MILE		OVER 1 MILE		OVER 1 MILE		OVER 1 MILE		OVER 1 MILE	
CARL ALLEN 51	OVER 1 MILE		OVER 1 MILE		OVER 1 MILE		OVER 1 MILE		OVER 1 MILE		OVER 1 MILE		OVER 1 MILE		OVER 1 MILE	
CARL ALLEN 52	OVER 1 MILE		OVER 1 MILE		OVER 1 MILE		OVER 1 MILE		OVER 1 MILE		OVER 1 MILE		OVER 1 MILE		OVER 1 MILE	
CARL ALLEN 53	OVER 1 MILE		OVER 1 MILE		OVER 1 MILE		OVER 1 MILE		OVER 1 MILE		OVER 1 MILE		OVER 1 MILE		OVER 1 MILE	
CARL ALLEN 54	OVER 1 MILE		OVER 1 MILE		OVER 1 MILE		OVER 1 MILE		OVER 1 MILE		OVER 1 MILE		OVER 1 MILE		OVER 1 MILE	