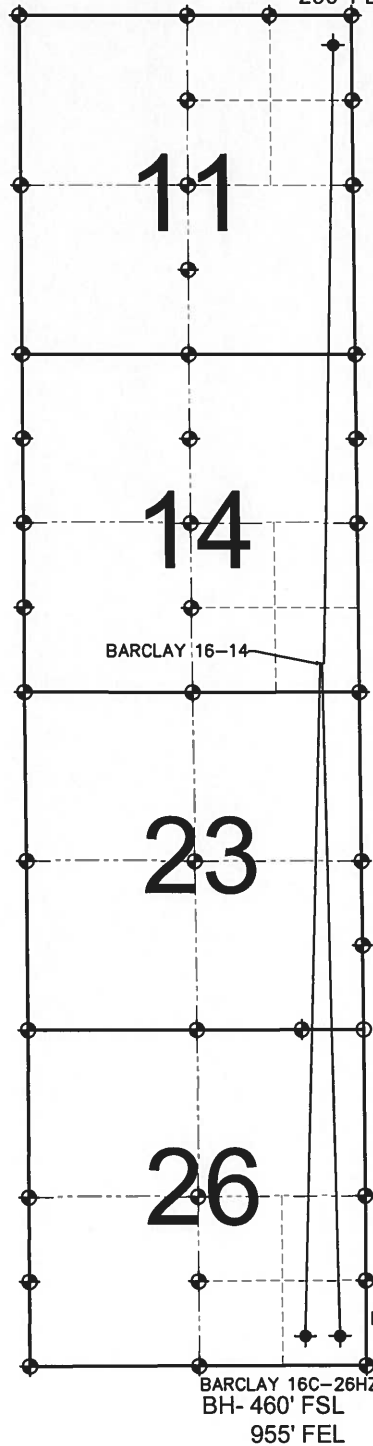


# BARCLAY 16C-26HZ MULTI-WELL PLAN

SECTION 14, TOWNSHIP 2 NORTH, RANGE 67 WEST, 6TH P.M.

BARCLAY 26N-11HZ  
BH- 460' FNL  
290' FEL



**NOTE:**  
FOR DETAILED SECTION BREAKDOWNS  
REFER TO WELL LOCATION CERTIFICATES  
PER SECTION

**NOTES:**  
BARCLAY 26N-11HZ TO BE AT 451' FSL, 546' FEL.  
BOTTOM HOLE AT 460' FNL & 290' FEL. SECTION 11  
BARCLAY 16N-26HZ TO BE AT 451' FSL, 576' FEL.  
BOTTOM HOLE AT 460' FSL & 410' FEL. SECTION 26  
BARCLAY 16C-26HZ TO BE AT 451' FSL, 606' FEL.  
BOTTOM HOLE AT 460' FSL & 955' FEL. SECTION 26  
BARCLAY 16-14 IS 451' FSL, 655' FEL.

## LEGEND

- ◆ = EXISTING MONUMENT
- ◆ = BOTTOM HOLE
- = PROPOSED WELL
- ◆ = EXISTING WELL
- BH= BOTTOM HOLE

PREPARED BY:



KERR-MCGEE OIL & GAS ONSHORE LP

FIELD DATE:  
09-04-13

DRAWING DATE:  
09-05-13

SURFACE LOCATION:

SE 1/4 SE 1/4, SEC. 14, T2N, R67W, 6TH P.M.  
WELD COUNTY, COLORADO

