

## SURVEY DATA



**Chevron  
U.S.A., Inc.**

WELL NO.: GRAY B-10  
(2805)  
FIELD . . . : RANGELY, CO.

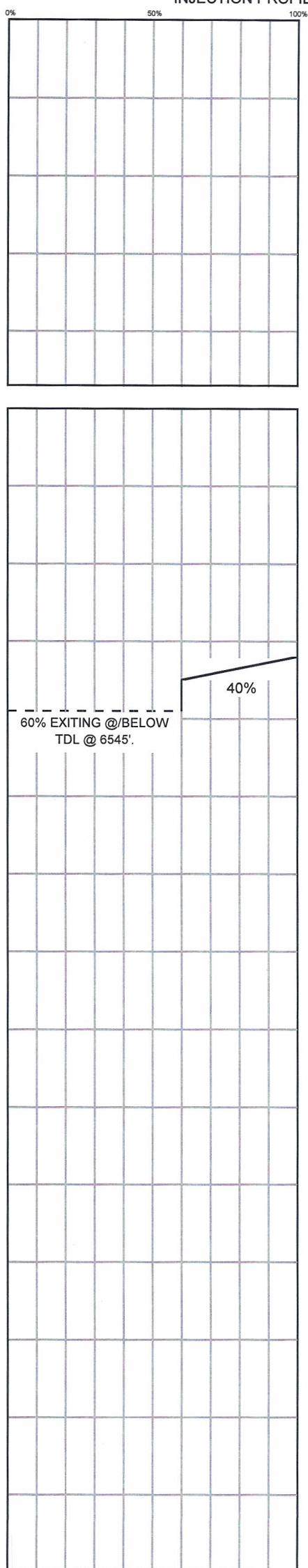
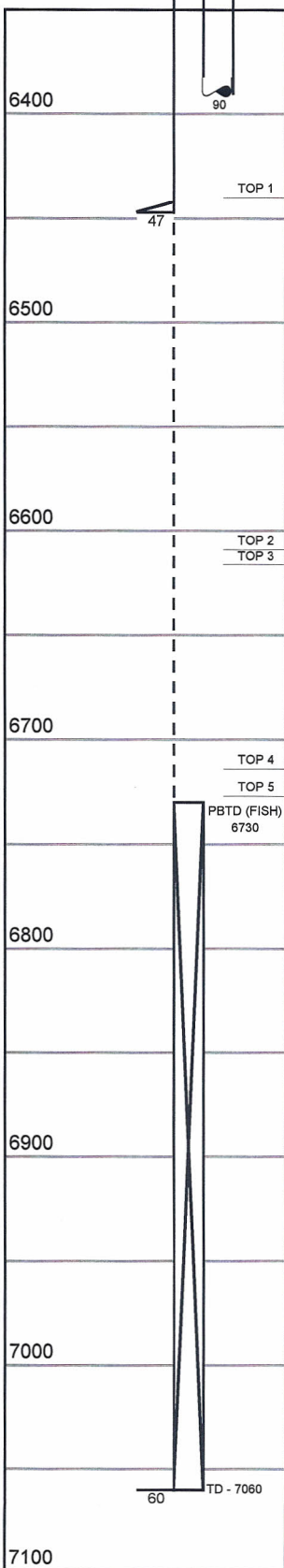
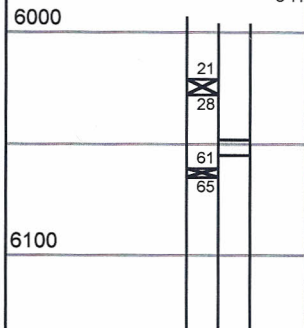
## REMARKS

SURVEY TYPE . . . T-S-T	SURFACE TEMP . . 104.8 F	R/A TRACER INDICATES TOP PERF AND PACKERS OK.  RECORDED BY: MATT STRATTON  * PICKED UP AT 6545' DURING R.A.T. SURVEY. 09/24/08, RAN 1.75" GAUGE RING TO 6595'±.
DATE . . . . . 10/28/2013	BHT . . . . . 114.3 F	
METERED RATE . . 1250 B/D	TBG PRESSURE . . 1180 PSI	
MEASURED RATE: 1195 B/D	CSG PRESSURE . . 0 PSI	
DESIRED RATE . . N/A	PICK-UP . . . . . 6498' *	
SERVICE CO. . . . PLS	INJ. FLUID . . . . H2O	

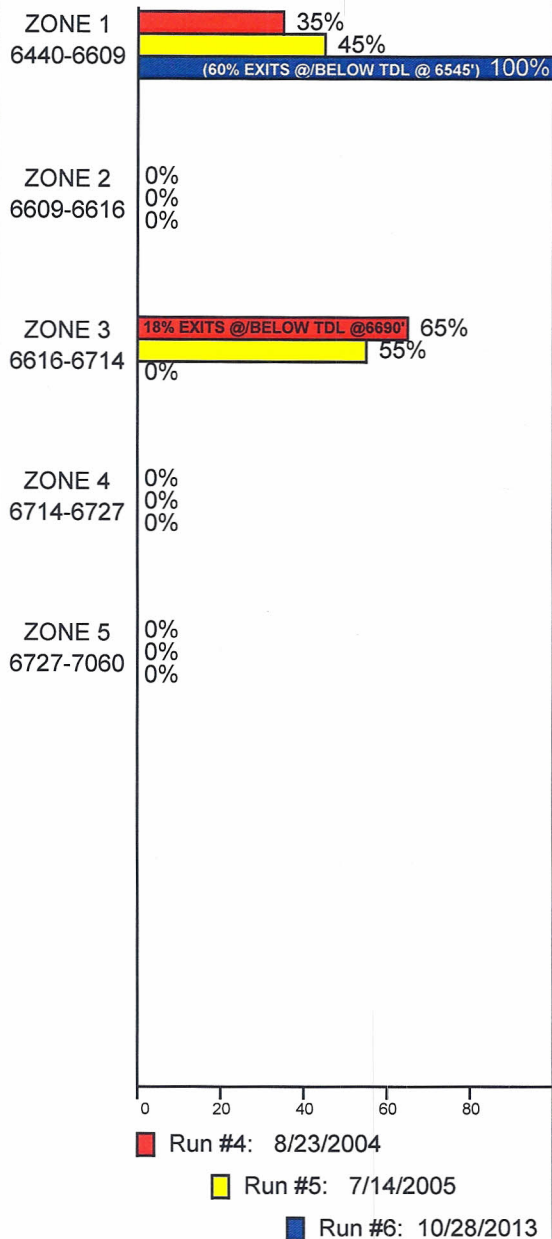
## INJECTION PROFILE

## MECHANICAL INFORMATION

7" 23# CASING	0-6447
OPEN HOLE	6447-7060
P.B.T.D. (FISH TOP)	6730
2-7/8" F.L. TUBING	0-6021
TOP PACKER	6021'-6028'
2-7/8" TUBING SUBS	6028'-6048'
ON/OFF TOOL 1.875" "F"	6048'-6055'
2-7/8" TUBING SUB	6055'-6061'
PACKER	6061'-6065'
2-3/8" F.G. TUBING	6065'-6390'
	C-14



PERCENTAGE INJECTED INTO  
ZONE



TEMPERATURES (F°)

DATE	RUN #4 8/23/2004	RUN #5 7/14/2005	RUN #6 10/28/2013
SURFACE	92.9	111.3	104.8
6440-6609	---	---	---
TDL (6498*)	106.5	116.4	114.3
6609-6616	---	---	---
6616-6714	---	---	---
6714-6727	---	---	---
6727-7060	---	---	---
RATE (B/D)	N/A	938	1195
PRESS (PSI)	2100	1220	1180