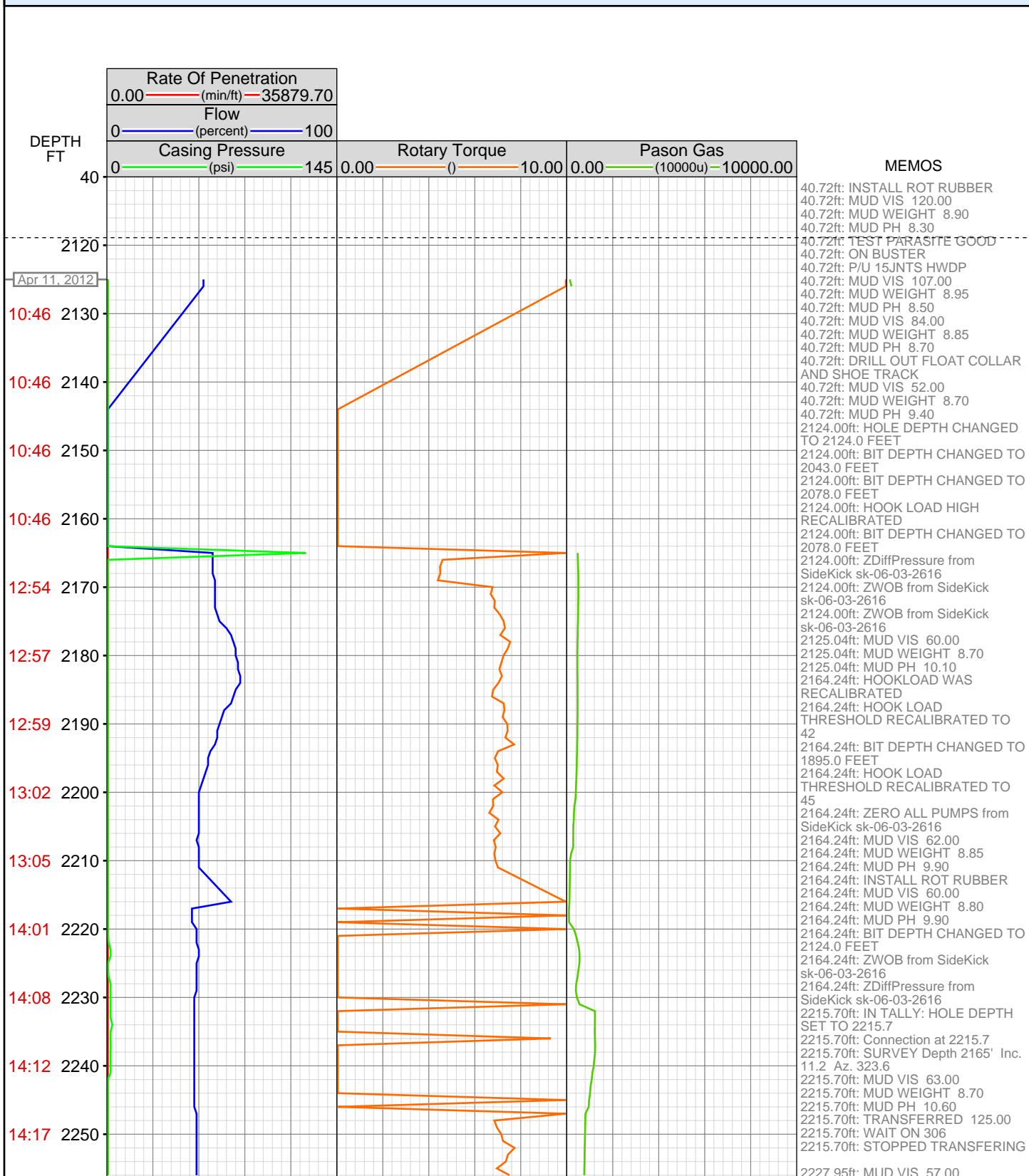
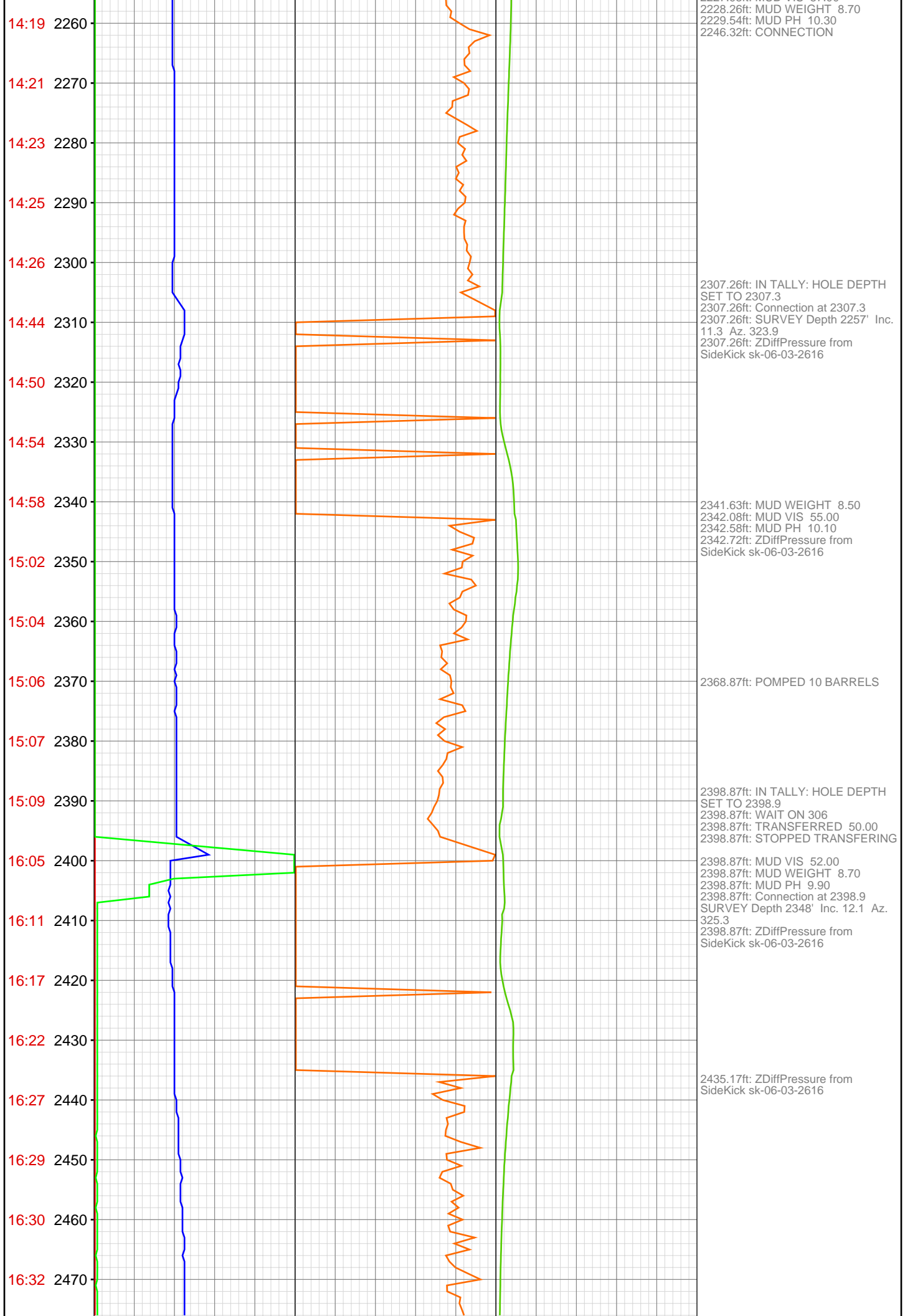
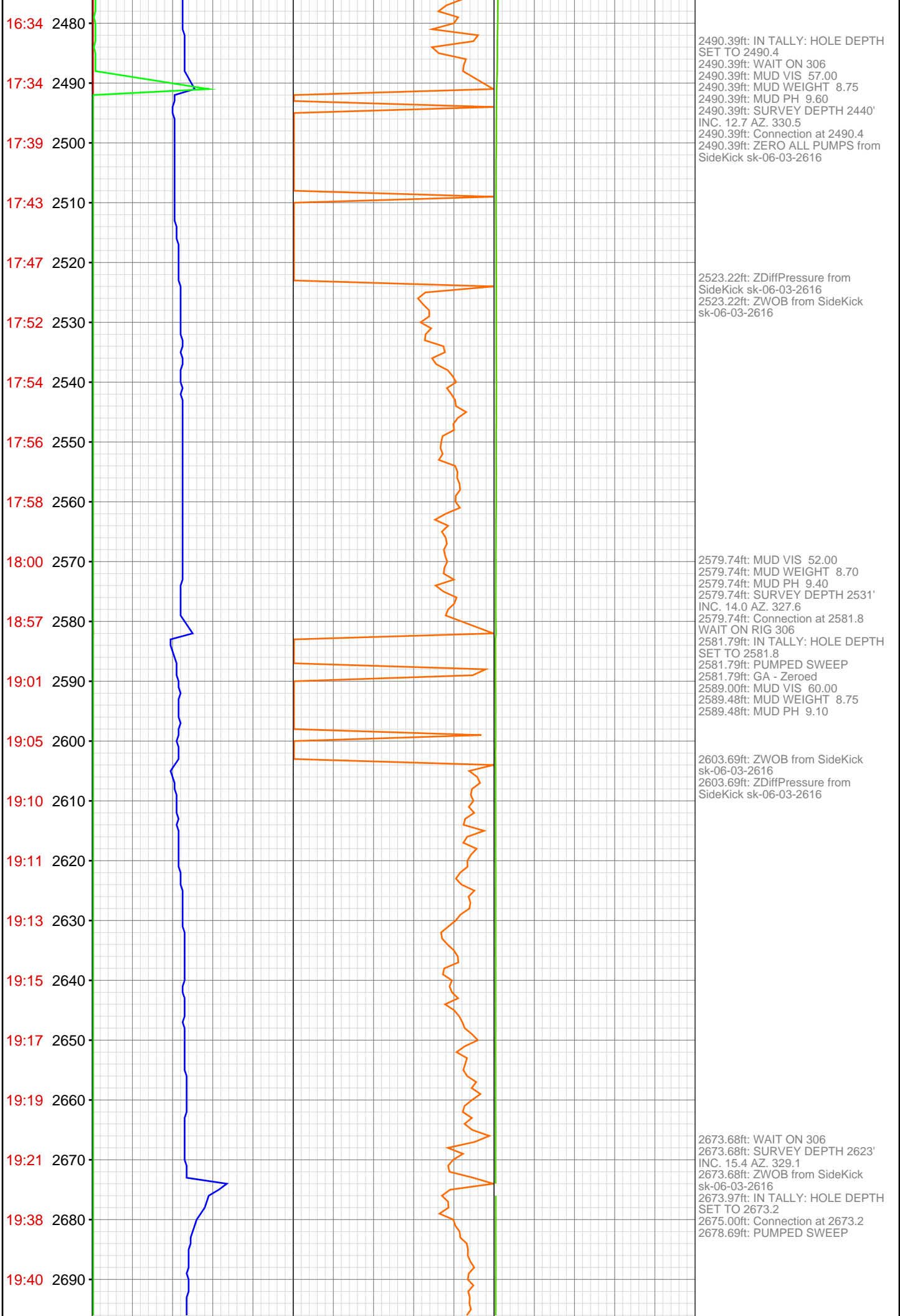


OPERATOR: EnCana Oil & Gas (USA), Inc.
WELL: DOUBLE WILLOW 8609D-28 P28 496
FIELD:
LOCATION: SEC.36 T4S RNG 96W
COUNTRY: USA
RIG: Pat-UTI 308

CONTRACTOR: Patterson-UTI Drilling Company
UNIQUE WELL ID: 504520796
SPUD DATE: Apr 11, 2012 04:30
RELEASE DATE:







19:42 2700

19:44 2710

19:46 2720

19:47 2730

19:49 2740

19:51 2750

19:53 2760

20:03 2770

20:04 2780

20:06 2790

20:08 2800

20:09 2810

20:11 2820

20:13 2830

20:15 2840

20:17 2850

20:26 2860

20:28 2870

20:29 2880

20:31 2890

20:33 2900

20:35 2910

2761.25ft: SURVEY DEPTH 2714'
INC. 14.9 AZ. 328.9
2761.25ft: MUD VIS 62.00
2761.25ft: MUD WEIGHT 8.75
2761.25ft: MUD PH 8.90
2761.25ft: ZWOB from SideKick
sk-06-03-2616
2761.25ft: Connection at 2764.8
2764.77ft: IN TALLY: HOLE DEPTH
SET TO 2764.8

2780.91ft: PUMPED SWEEP

2853.76ft: ZWOB from SideKick
sk-06-03-2616
2853.76ft: SURVEY DEPTH 2806'
INC. 14.7 AZ. 327.8
2853.76ft: Connection at 2856.4
2853.76ft: ZWOB from SideKick
sk-06-03-2616
2856.40ft: IN TALLY: HOLE DEPTH
SET TO 2856.4

