

---

# **WPX ENERGY ROCKY MOUNTAIN LLC-EBUS**

---

**RWF 424-29  
RULISON  
Garfield County , Colorado**

## **Cement Surface Casing** **12-Jun-2013**

### **Post Job Summary**

## The Road to Excellence Starts with Safety

Sold To #: 300721	Ship To #: 3003675	Quote #:	Sales Order #: 900510208
Customer: WPX ENERGY ROCKY MOUNTAIN LLC-EBUS	Customer Rep: Towers, Ron		
Well Name: RWF	Well #: 424-29	API/UWI #: 05-045-21661	
Field: RULISON	City (SAP): RIFLE	County/Parish: Garfield	State: Colorado
Lat: N 39.49 deg. OR N 39 deg. 29 min. 24.155 secs.	Long: W 107.919 deg. OR W -108 deg. 4 min. 53.18 secs.		
Contractor: Nabors	Rig/Platform Name/Num: Nabors 573		
Job Purpose: Cement Surface Casing			
Well Type: Development Well	Job Type: Cement Surface Casing		
Sales Person: MAYO, MARK	Srv Supervisor: DEUSSEN, EDWARD	MBU ID Emp #: 485182	

## Job Personnel

HES Emp Name	Exp Hrs	Emp #	HES Emp Name	Exp Hrs	Emp #	HES Emp Name	Exp Hrs	Emp #
ANDERSON, ADAM S	6.0	456683	ANDREWS, ANTHONY Michael	6.0	321604	DEUSSEN, EDWARD Eric	6.0	485182

## Equipment

HES Unit #	Distance-1 way	HES Unit #	Distance-1 way	HES Unit #	Distance-1 way	HES Unit #	Distance-1 way
10744549	60 mile	10872429	60 mile	10995027	60 mile	11583932	60 mile
11808847	60 mile						

## Job Hours

Date	On Location Hours	Operating Hours	Date	On Location Hours	Operating Hours	Date	On Location Hours	Operating Hours
6-12-13	6.0	3.0						

**TOTAL** Total is the sum of each column separately

## Job

Formation Name					Date				Time		Time Zone				
Formation Depth (MD)		Top		Bottom		Called Out			11 - Jun - 2013		10:30		MST		
Form Type		BHST		On Location			12 - Jun - 2013		02:30		MST				
Job depth MD		1158. ft		Job Depth TVD		1158. ft		Job Started		12 - Jun - 2013		06:50		MST	
Water Depth		Wk Ht Above Floor		5. ft		Job Completed		12 - Jun - 2013		07:41		MST			
Perforation Depth (MD)		From		To		Departed Loc			12 - Jun - 2013		09:00		MST		

## Well Data

Description	New / Used	Max pressure psig	Size in	ID in	Weight lbm/ft	Thread	Grade	Top MD ft	Bottom MD ft	Top TVD ft	Bottom TVD ft
OPEN HOLE				13.5				.	1178.		
SURFACE CASING	Unknown		9.625	9.001	32.3		J-55	.	1158.		

## Tools and Accessories

Type	Size	Qty	Make	Depth	Type	Size	Qty	Make	Depth	Type	Size	Qty	Make
Guide Shoe					Packer					Top Plug	9 5/8	1	HES
Float Shoe					Bridge Plug					Bottom Plug			
Float Collar					Retainer					SSR plug set			
Insert Float										Plug Container	9 5/8	1	HES
Stage Tool										Centralizers			

## Miscellaneous Materials

Gelling Agt	Conc	Surfactant	Conc	Acid Type	Qty	Conc	%
Treatment Fld	Conc	Inhibitor	Conc	Sand Type	Size	Qty	

## Fluid Data

Fluid Data									
Stage/Plug #: 1									
Fluid #	Stage Type	Fluid Name	Qty	Qty uom	Mixing Density lbm/gal	Yield ft3/sk	Mix Fluid Gal/sk	Rate bbl/min	Total Mix Fluid Gal/sk

Stage/Plug #: 1

Stage/Plug #: 1									
Fluid #	Stage Type	Fluid Name	Qty	Qty uom	Mixing Density lbm/gal	Yield ft <sup>3</sup> /sk	Mix Fluid Gal/sk	Rate bbl/min	Total Mix Fluid Gal/sk
1	Fresh Water Spacer		20.00	bbl	.	.0	.0	4.0	
2	VersaCem Lead Cement	VERSACEM (TM) SYSTEM (452010)	160.0	sacks	12.3	2.38	13.75	8.0	13.75
3	VersaCem Tail Cement	VERSACEM (TM) SYSTEM (452010)	160.0	sacks	12.8	2.11	11.75	7.0	11.75
4	Fresh Water Displacement		88.00	bbl	.	.0	.0	10.0	
Calculated Values		Pressures		Volumes					
Displacement	87.7	Shut In: Instant		Lost Returns		Cement Slurry	127.9	Pad	
Top Of Cement	SURFACE	5 Min		Cement Returns	30	Actual Displacement	87.7	Treatment	
Frac Gradient		15 Min		Spacers	20	Load and Breakdown		Total Job	235.6
Rates									
Circulating		Mixing	8	Displacement	10	Avg. Job			8
Cement Left In Pipe	Amount	44 ft	Reason	Shoe Joint					
Frac Ring # 1 @	ID	Frac ring # 2 @	ID	Frac Ring # 3 @	ID	Frac Ring # 4 @	ID		
The Information Stated Herein Is Correct				Customer Representative Signature					

*The Road to Excellence Starts with Safety*

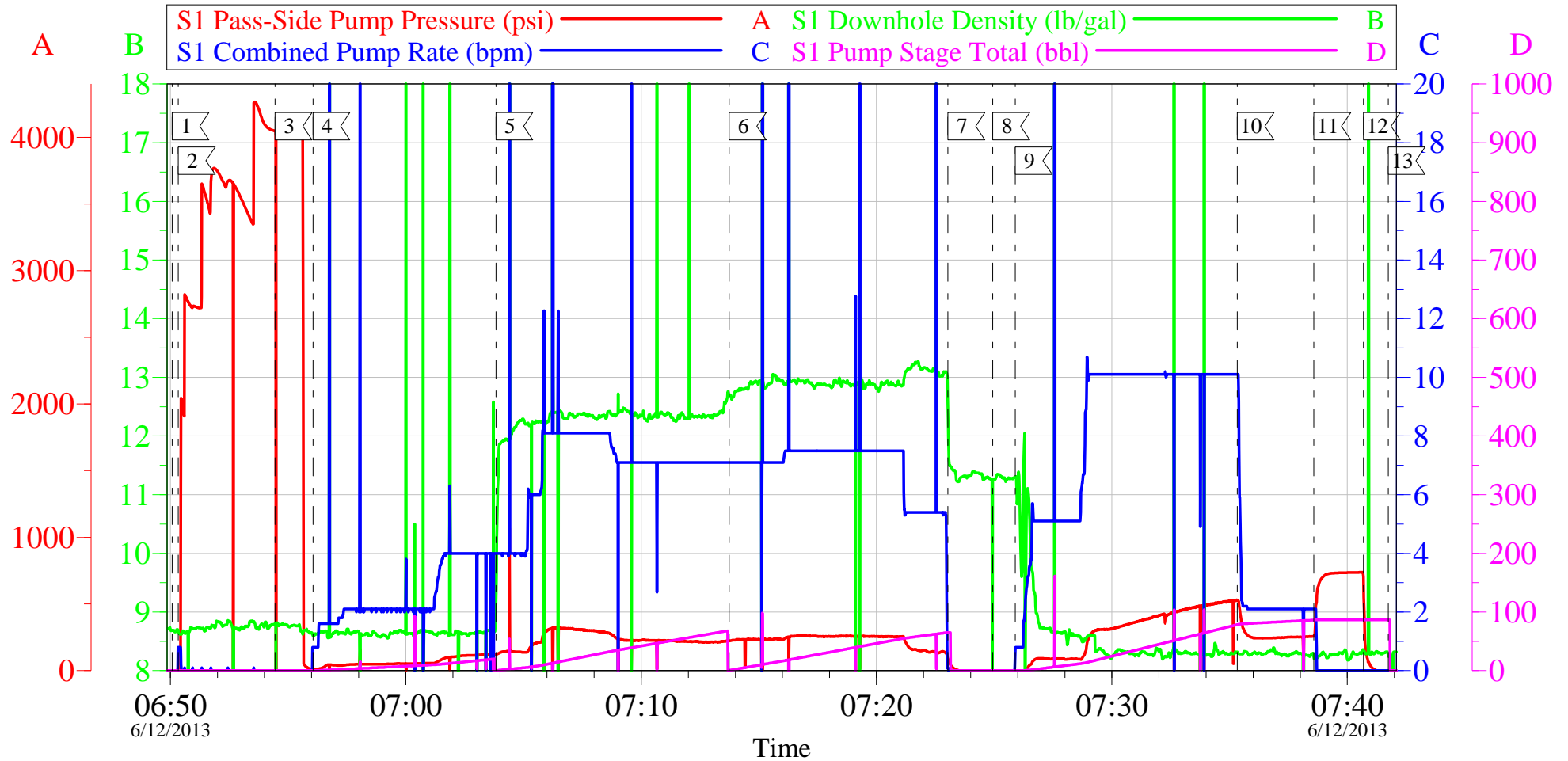
<b>Sold To #:</b> 300721		<b>Ship To #:</b> 3003675		<b>Quote #:</b>		<b>Sales Order #:</b> 900510208	
<b>Customer:</b> WPX ENERGY ROCKY MOUNTAIN LLC-EBUS				<b>Customer Rep:</b> Towers, Ron			
<b>Well Name:</b> RWF			<b>Well #:</b> 424-29			<b>API/UWI #:</b> 05-045-21661	
<b>Field:</b> RULISON		<b>City (SAP):</b> RIFLE		<b>County/Parish:</b> Garfield			<b>State:</b> Colorado
<b>Legal Description:</b>							
<b>Lat:</b> N 39.49 deg. OR N 39 deg. 29 min. 24.155 secs.				<b>Long:</b> W 107.919 deg. OR W -108 deg. 4 min. 53.18 secs.			
<b>Contractor:</b> Nabors			<b>Rig/Platform Name/Num:</b> Nabors 573				
<b>Job Purpose:</b> Cement Surface Casing						<b>Ticket Amount:</b>	
<b>Well Type:</b> Development Well			<b>Job Type:</b> Cement Surface Casing				
<b>Sales Person:</b> MAYO, MARK			<b>Srvc Supervisor:</b> DEUSSEN, EDWARD			<b>MBU ID Emp #:</b> 485182	

Activity Description	Date/Time	Cht #	Rate bbl/min	Volume bbl		Pressure psig		Comments
				Stage	Total	Tubing	Casing	
Call Out	06/11/2013 10:30							CREW ALREADY IN FIELD
Crew Leave Yard	06/12/2013 01:00							1 ELITE, 1 660, 1 PICKUP
Arrive At Loc	06/12/2013 02:30							RIG JUST STARTING TO RUN CASING
Assessment Of Location Safety Meeting	06/12/2013 02:45							
Pre-Rig Up Safety Meeting	06/12/2013 05:45							ALL HES PERSONNEL
Rig-Up Equipment	06/12/2013 06:00							1 HARD LINE TO FLOOR, 2 WATER LINES TO UPRIGHT, BULK HOSE TO 660
Pre-Job Safety Meeting	06/12/2013 06:40							ALL HES PERSONNEL AND RIG CREW
Start Job	06/12/2013 06:50							TD 1178', TP 1158', SJ 44', MW 10.9, OH 13 1/2", CSG 9 5/8", 32.3# H-40
Pump Water	06/12/2013 06:50		2	2			47.0	FILL LINES
Pressure Test	06/12/2013 06:54							PRESSURED UP TO 4030 PSI - PRESSURE HELD WELL
Pump Spacer 1	06/12/2013 06:56		4	20			117.0	FRESH WATER SPACER
Pump Lead Cement	06/12/2013 07:03		8	67.8			310.0	160 SKS, 12.3 PPG, 2.38 YIELD, 13.75 GAL/SK
Pump Tail Cement	06/12/2013 07:13		7	60.1			260.0	160 SKS, 12.8 PPG, 2.11 YIELD, 11.75 GAL/SK
Shutdown	06/12/2013 07:23							

Activity Description	Date/Time	Cht #	Rate bbl/ min	Volume bbl		Pressure psig		Comments
				Stage	Total	Tubing	Casing	
Drop Top Plug	06/12/2013 07:24							
Pump Displacement	06/12/2013 07:25		10	87.7			530.0	FRESH WATER
Slow Rate	06/12/2013 07:35		2	10			244.0	
Bump Plug	06/12/2013 07:38						255.0	PRESSURED UP TO 723 PSI
Check Floats	06/12/2013 07:40							FLOATS HELD - GOT 1/2 BBL BACK
End Job	06/12/2013 07:41							GOT 30 BBLS CEMENT TO SURFACE / USED 40 LBS SUGAR / NO ADD HOURS OR DERRICK CHARGE
Post-Job Safety Meeting (Pre Rig-Down)	06/12/2013 07:50							ALL HES PERSONNEL
Rig-Down Equipment	06/12/2013 08:00							
Pre-Convoy Safety Meeting	06/12/2013 08:50							ALL HES PERSONNEL
Crew Leave Location	06/12/2013 09:00							THANK YOU FOR USING HALLIBURTON AND ED DEUSSEN AND CREW
Pre-Convoy Safety Meeting	06/12/2013 12:45							ALL HES PERSONNEL

# WPX - RWF 424-29

9 5/8 SURFACE



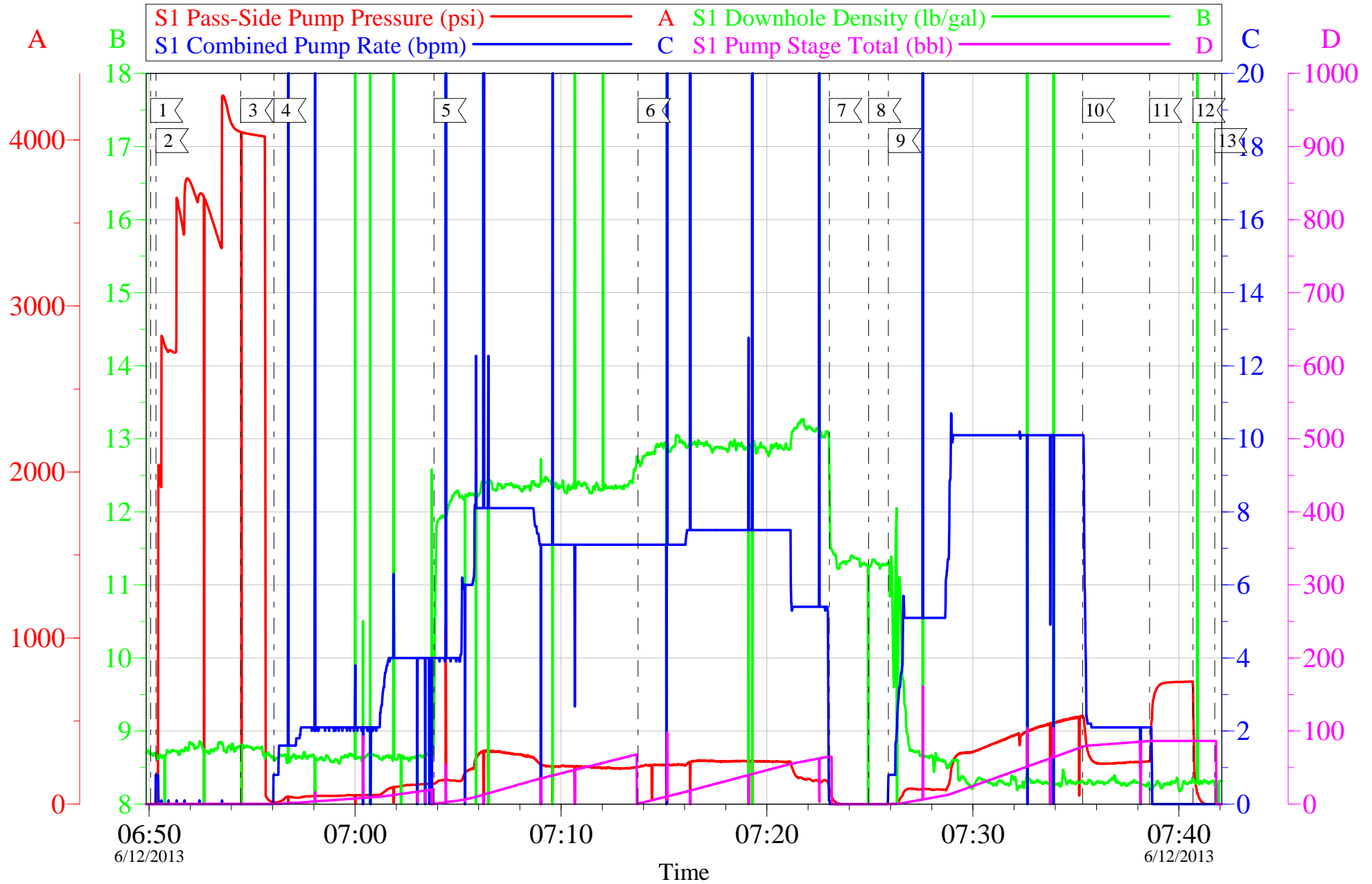
Local Event Log								
1	START JOB	06:50:04	2	FILL LINES	06:50:20	3	PRESSURE TEST	06:54:27
4	PUMP H2O SPACER	06:56:03	5	PUMP LEAD CEMENT	07:03:50	6	PUMP TAIL CEMENT	07:13:44
7	SHUTDOWN/ WASH UP	07:23:02	8	DROP TOP PLUG	07:24:57	9	PUMP DISPLACEMENT	07:25:54
10	SLOW RATE	07:35:19	11	BUMP PLUG	07:38:35	12	CHECK FLOATS	07:40:41
13	END JOB	07:41:44						

Customer:	WPX	Job Date:	12-Jun-2013	Sales Order #:	900510208
Well Description:	RWF 424-29	Job Type:	SURFACE	ADC Used:	YES
Company Rep:	HARRY SAMSON	Cement Supervisor:	ED DEUSSEN	Elite #7:	ADAM ANDERSON

OptiCem v6.4.10  
12-Jun-13 07:46

# WPX - RWF 424-29

9 5/8 SURFACE



Customer: WPX	Job Date: 12-Jun-2013	Sales Order #: 900510208
Well Description: RWF 424-29	Job Type: SURFACE	ADC Used: YES
Company Rep: HARRY SAMSON	Cement Supervisor: ED DEUSSEN	Elite #7: ADAM ANDERSON

OptiCem v6.4.10  
12-Jun-13 07:46

# HALLIBURTON

## Water Analysis Report

Company: WILLIAMS

Submitted by: ED DEUSSEN

Attention: J.TROUT

Lease RWF

Well # 424-29

Date: 6/11/2013

Date Rec.: 6/12/2013

S.O.# 900510208

Job Type: 9 5/8 SURFACE

Specific Gravity	<i>MAX</i>	<b>1</b>
pH	<i>8</i>	<b>6.5</b>
Potassium (K)	<i>5000</i>	<b>0</b> Mg / L
Calcium (Ca)	<i>500</i>	<b>120</b> Mg / L
Iron (FE2)	<i>300</i>	<b>0</b> Mg / L
Chlorides (Cl)	<i>3000</i>	<b>0</b> Mg / L
Sulfates (SO <sub>4</sub> )	<i>1500</i>	<b>&lt;200</b> Mg / L
Temp	<i>40-80</i>	<b>73</b> Deg
Total Dissolved Solids		<b>170</b> Mg / L

Respectfully: ED DEUSSEN

Title: CEMENTING SUPERVISOR

Location: Grand Junction, CO

NOTICE: This report is limited to the described sample tested. Any person using or relying on this report agrees that Halliburton shall not be liable for any loss or damage whether due to act or omission resulting from such report or its use.



<b>Sales Order #:</b> 900510208	<b>Line Item:</b> 10	<b>Survey Conducted Date:</b> 6/12/2013
<b>Customer:</b> WPX ENERGY ROCKY MOUNTAIN LLC-EBUS		<b>Job Type (BOM):</b> CMT SURFACE CASING BOM
<b>Customer Representative:</b> HARRY SAMSON		<b>API / UWI: (leave blank if unknown)</b> 05-045-21661
<b>Well Name:</b> RWF		<b>Well Number:</b> 424-29
<b>Well Type:</b> Development Well	<b>Well Country:</b> United States of America	
<b>H2S Present:</b>	<b>Well State:</b> Colorado	<b>Well County:</b> Garfield

Dear Customer,

We hope that you were satisfied with the service quality of this job performed by Halliburton. It is the aim of our management and service personnel to deliver equipment and service of a standard unmatched in the service sector of the energy industry.

Please take the time to let us know if our performance met with your satisfaction. Please be as critical as possible to ensure we constantly improve our service. Your comments are of great value to us and are intended for the exclusive use of Halliburton.

### CUSTOMER SATISFACTION SURVEY

CATEGORY	CUSTOMER SATISFACTION RESPONSE	
Survey Conducted Date	The date the survey was conducted	6/12/2013
Survey Interviewer	The survey interviewer is the person who initiated the survey.	EDWARD DEUSSEN (HB57194)
Customer Participation	Did the customer participate in this survey? (Y/N)	Yes
Customer Representative	Enter the Customer representative name	HARRY SAMSON
HSE	Was our HSE performance satisfactory? Circle Y or N	Yes
Equipment	Were you satisfied with our Equipment? Circle Y or N	Yes
Personnel	Were you satisfied with our people? Circle Y or N	Yes
Customer Comment	Customer's Comment	

<b>CUSTOMER SIGNATURE</b>
---------------------------

<b>Sales Order #:</b> 900510208	<b>Line Item:</b> 10	<b>Survey Conducted Date:</b> 6/12/2013
<b>Customer:</b> WPX ENERGY ROCKY MOUNTAIN LLC-EBUS		<b>Job Type (BOM):</b> CMT SURFACE CASING BOM
<b>Customer Representative:</b> HARRY SAMSON		<b>API / UWI: (leave blank if unknown)</b> 05-045-21661
<b>Well Name:</b> RWF		<b>Well Number:</b> 424-29
<b>Well Type:</b> Development Well	<b>Well Country:</b> United States of America	
<b>H2S Present:</b>	<b>Well State:</b> Colorado	<b>Well County:</b> Garfield

### KEY PERFORMANCE INDICATORS

General	
<b>Survey Conducted Date</b> The date the survey was conducted	6/12/2013

Cementing KPI Survey	
<b>Type of Job</b> Select the type of job. (Cementing or Non-Cementing)	0
<b>Select the Maximum Deviation range for this Job</b> What is the highest deviation for the job you just completed? This may not be the maximum well deviation.	Vertical
<b>Total Operating Time (hours)</b> Total Operating Hours Including Rig-up, Pumping, Rig-down. Enter in decimal format.	3
<b>HSE Incident, Accident, Injury</b> HSE Incident, Accident, Injury. This should be recordable incidents only.	No
<b>Was the job purpose achieved?</b> Was the job delivered correctly as per customer agreed design?	Yes
<b>Operating Hours (Pumping Hours)</b> Total number of hours pumping fluid on this job. Enter in decimal format.	1
<b>Customer Non-Productive Rig Time (hrs)</b> Lost time due to Halliburton in the start, execution, or completion of an ordered service or product, or delays in a follow-on service. Enter in decimal format. 0 if none.	0
<b>Type of Rig Classification Job Was Performed</b> Type Of Rig (classification) Job Was Performed On	Drilling Rig (Portable)
<b>Number Of JSAs Performed</b> Number Of Jsas Performed	5
<b>Number of Unplanned Shutdowns</b> Unplanned shutdown is when injection stops for any period of time.	0
<b>Was this a Primary Cement Job (Yes / No)</b>	Yes

<b>Sales Order #:</b> 900510208	<b>Line Item:</b> 10	<b>Survey Conducted Date:</b> 6/12/2013
<b>Customer:</b> WPX ENERGY ROCKY MOUNTAIN LLC-EBUS		<b>Job Type (BOM):</b> CMT SURFACE CASING BOM
<b>Customer Representative:</b> HARRY SAMSON		<b>API / UWI: (leave blank if unknown)</b> 05-045-21661
<b>Well Name:</b> RWF		<b>Well Number:</b> 424-29
<b>Well Type:</b> Development Well	<b>Well Country:</b> United States of America	
<b>H2S Present:</b>	<b>Well State:</b> Colorado	<b>Well County:</b> Garfield

Primary Cement Job= Casing job, Liner job, or Tie-back job.	
<b>Did We Run Wiper Plugs?</b> Did We Run Top And Bottom Casing Wiper Plugs?	Top
<b>Mixing Density of Job Stayed in Designed Density Range (0-100%)</b> Density Range defined as +/- .20 ppg. Calculation: Total BBLs cement mixed at designed density divided by total BBLs of cement multiplied by 100	95
<b>Was Automated Density Control Used?</b> Was Automated Density Control (ADC) Used ?	Yes
<b>Pump Rate (percent) of Job Stayed At Designed Pump Rate</b> Pump Rate range defined as +/- 1bbl/min. Calculation: Total BBLs of fluid pumped at the designed rate divided by Total BBLs of fluid pumped, multiplied by 100	98
<b>Nbr of Remedial Sqz Jobs Rqd - Competition</b> Number Of Remedial Squeeze Jobs Required After Primary Job Performed By Competition	0
<b>Nbr of Remedial Plug Jobs Rqd - HES</b> Number Of Remedial Plug Jobs Needed After Primary Plug Pumped By HES	0
<b>Nbr of Remedial Sqz Jobs Rqd - HES</b> Number Of Remedial Squeeze Jobs Required After Primary Job Performed By HES	0