

1801 Broadway
Suite 500
Denver, Colorado 80202



Shannon Hartnett
Regulatory Compliance Specialist
Tel: 303.398.0351
E-mail: shartnett@gwogco.com

October 25, 2013

Colorado Oil and Gas Conservation Commission
1120 Lincoln Street, Suite 801
Denver, Colorado 80203

RE: **Proposed Wellbore Spacing Unit**
Tailholt FD 11-380HN
Tailholt FD 11-371HN

Township 6 North, Range 67 West, 6th P.M.
Section 11: West ½
Weld County, Colorado

Dear Director:

Great Western Operating Company, LLC is planning to drill the above captioned well in accordance with the provisions of COGCC Rule 318(l)e(2).

Great Western proposed wellbore spacing unit consists of:

- Tailholt FD 11-380HN - W/2W/2 Sec 11 & E/2E/2 Sec 10 T6NR67W
- Tailholt FD 11-371HN - E/2W/2 and W/2E/2 Sec 11 T6NR67W

Great Western Operating Company, LLC respectfully requests that the COGCC review the enclosed map illustrating the proposed wellbore spacing unit.

Respectfully,



Shannon Hartnett
Regulatory Compliance Specialist
Great Western Operating Company, LLC

T6N, R67W, 6th P.M.

GREAT WESTERN OIL & GAS COMPANY

Well location, TAILHOLT FD #11-380HN, located as shown in the NW 1/4 NW 1/4 of Section 11, T6N, R67W, 6th P.M., Weld County, Colorado.

BASIS OF ELEVATION

USGS COOPERATIVE BASE NETWORK CONTROL STATION, DESIGNATION 'VERMILYEA'. NGS DATA SHEET LISTS THE NAVD 88 ELEVATION AS BEING 5026 FEET

BASIS OF BEARINGS

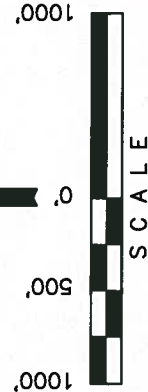
BASIS OF BEARINGS IS A G.P.S. OBSERVATION.

LEGEND:

- 90° SYMBOL
- PROPOSED WELL HEAD.
- PROPOSED ENTRY POINT.
- PROPOSED TARGET BOTTOM HOLE.
- SECTION CORNERS LOCATED.

LINE TABLE	
LINE	LENGTH
L1	570.30'

1994 Alum. Cap.
0.5' Below Ground
Lat: 40.501725°
Long: 104.851225°



CERTIFICATE

THIS IS TO CERTIFY THAT THE ABOVE PLATONAS PREPARED FROM FIELD NOTES OF ACTUAL SURVEYS MADE BY ME OR UNDER MY SUPERVISION AND THAT THE SAME ARE TRUE AND CORRECT TO THE BEST OF MY KNOWLEDGE AND BELIEF.

REGISTERED LAND SURVEYOR
STATE OF COLORADO
99-17-13

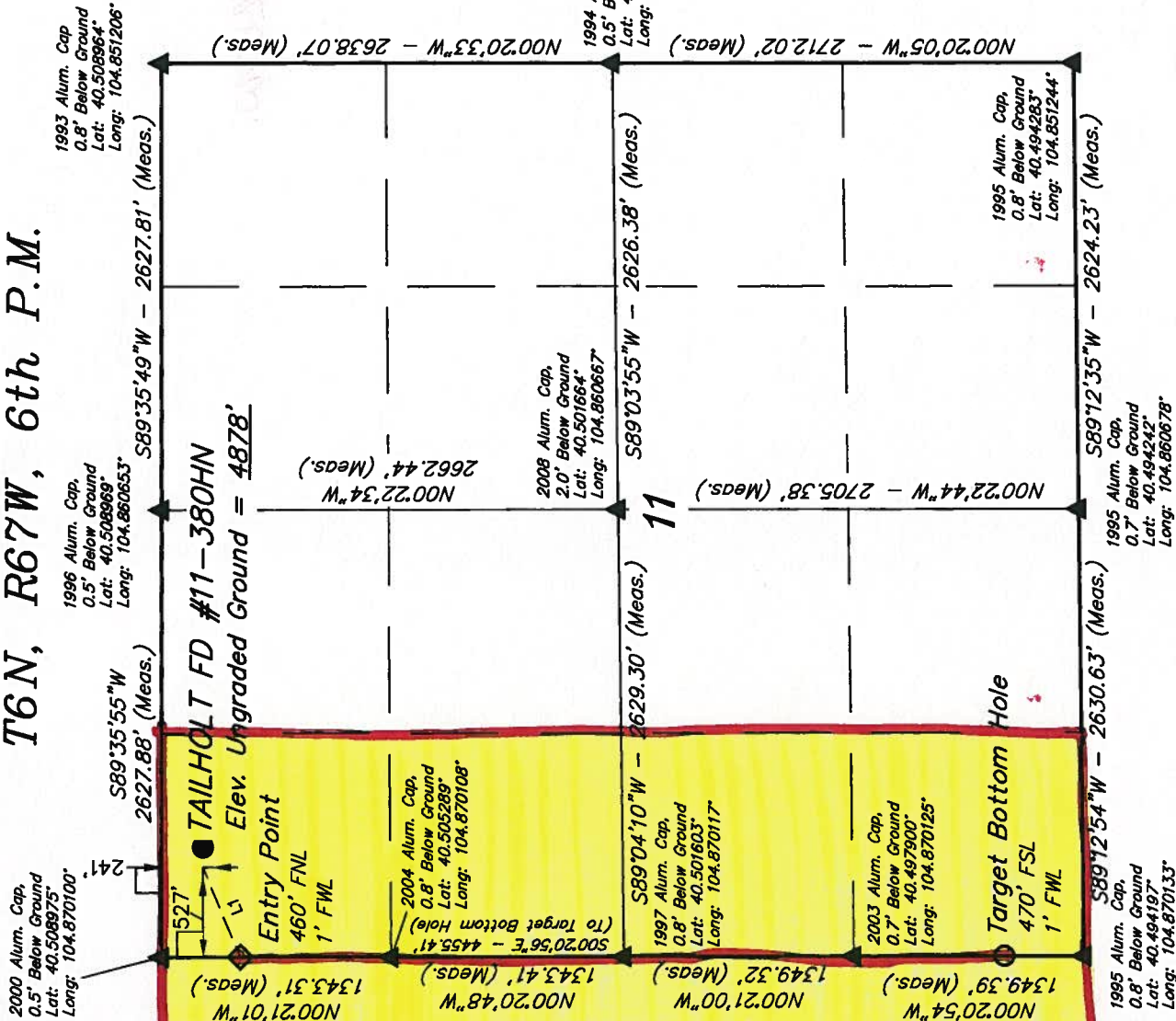
UTAH ENGINEERING & LAND SURVEYING

85 SOUTH 200 EAST - VERNAL, UTAH 84078

(435) 789-1017

PDOP = 1.9

SCALE 1" = 1000'	DATE SURVEYED: 09-09-13	DATE DRAWN: 09-10-13
PARTY D.N. G.W. J.W.	REFERENCES G.L.O. PLAT	
WEATHER HOT	FILE GREAT WESTERN OIL & GAS COMPANY	



NAD 83 (TARGET BOTTOM HOLE)	NAD 83 (ENTRY POINT)	NAD 83 (SURFACE LOCATION)
LATITUDE = 40°28'43.76" (40.495489)	LATITUDE = 40°30'27.77" (40.507714)	LATITUDE = 40°30'29.93" (40.508314)
LONGITUDE = 104°52'12.45" (104.870125)	LONGITUDE = 104°52'12.36" (104.870100)	LONGITUDE = 104°52'05.55" (104.868208)
NAD 27 (TARGET BOTTOM HOLE)	NAD 27 (ENTRY POINT)	NAD 27 (SURFACE LOCATION)
LATITUDE = 40°28'43.82" (40.495506)	LATITUDE = 40°30'27.84" (40.507733)	LATITUDE = 40°30'30.00" (40.508333)
LONGITUDE = 104°52'10.56" (104.869800)	LONGITUDE = 104°52'10.46" (104.869572)	LONGITUDE = 104°52'03.65" (104.867681)

SEC. 10