

1801 Broadway  
Suite 500  
Denver, Colorado 80202



Shannon Hartnett  
Regulatory Compliance Specialist  
Tel: 303.398.0351  
E-mail: shartnett@gwogco.com

October 25, 2013

Colorado Oil and Gas Conservation Commission  
1120 Lincoln Street, Suite 801  
Denver, Colorado 80203

RE: **Proposed Wellbore Spacing Unit**  
**Tailholt FD 11-379HN**  
**Tailholt FD 11-378HC**  
**Tailholt FD 11-374HN**  
**Tailholt FD 11-373HC**  
**Tailholt FD 11-372HN**

Township 6 North, Range 67 West, 6<sup>th</sup> P.M.  
Section 11: West ½  
Weld County, Colorado

Dear Director:

Great Western Operating Company, LLC is planning to drill the above captioned well in accordance with the provisions of COGCC Rule 318(l)e(2).

Great Western proposed wellbore spacing unit consists of:

- **West ½ of Section 11 T3N-R68W**

Great Western Operating Company, LLC respectfully requests that the COGCC review the enclosed map illustrating the proposed wellbore spacing unit.

Respectfully,



Shannon Hartnett  
Regulatory Compliance Specialist  
Great Western Operating Company, LLC

**GREAT WESTERN OIL & GAS COMPANY**

Well location, TAILHOLT FD #11-373HC, located as shown in the NW 1/4 NW 1/4 of Section 11, T6N, R67W, 6th P.M., Weld County, Colorado.

## BASIS OF ELEVATION

USGS COOPERATIVE BASE NETWORK CONTROL STATION,  
DESIGNATION 'VERMILYEA'. NGS DATA SHEET LISTS THE  
NAVD 88 ELEVATION AS BEING 5026 FEET

## BASIS OF BEARINGS

BASIS OF BEARINGS IS A G.P.S. OBSERVATION.

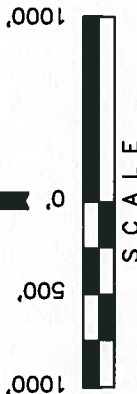
LINE TABLE		
LINE	DIRECTION	LENGTH
L1	S80°48'36"E	1311.08'

**LEGEND:**

- L 90° SYMBOL  
 ● PROPOSED WELL HEAD.  
 ◇ PROPOSED ENTRY POINT.  
 ○ PROPOSED TARGET  
 BOTTOM HOLE.  
 ▲ SECTION CORNERS  
 LOCATED.



1994 Alum. Cap,  
0.5' Below Ground  
Lat: 40.501725°  
Long: 104.851225°



# CERTIFICATE

THIS IS TO CERTIFY THAT THE ABOVE PLAT WAS PREPARED FROM FIELD NOTES OF ACTUAL SURVEYS MADE BY ME OR UNDER MY SUPERVISION AND THAT THE SAME ARE TRUE AND CORRECT TO THE BEST OF MY KNOWLEDGE AND BELIEF.

REGISTERED LAND SURVEYOR  
REGISTRATION NO. 17492  
STATE OF COLORADO

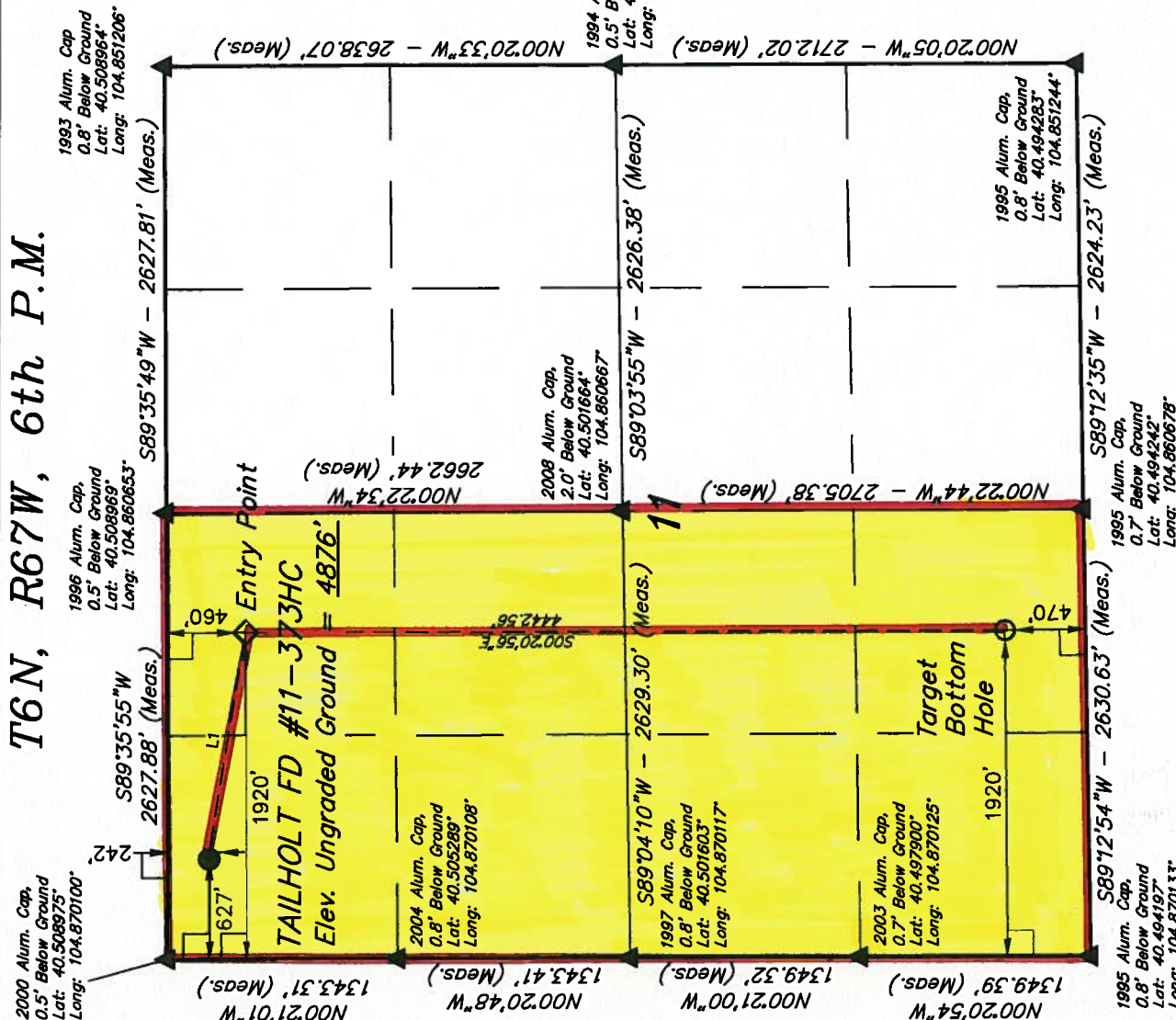
REVISÉ: 09-10-13  
REVISÉ: 05-24-13

## UTAH ENGINEERING &amp; LAND SURVEYING

85 SOUTH 200 EAST -- VERNAL, UTAH 84078  
(435) 789-1017

**PDOP = 1.9**

SCALE	1" = 1000'	DATE SURVEYED:	DATE DRAWN:
		07-24-12	07-26-12
PARTY	D.N. G.W. J.W.	REFERENCES	
		G.L.O. PLAT	
WEATHER	HOT	FILE	GREAT WESTERN OIL & GAS COMPANY



NAD 83 (TARGET BOTTOM HOLE)		NAD 83 (ENTRY POINT)		NAD 83 (SURFACE LOCATION)	
LATITUDE = 40°49'43.87"	(40.895519)	LATITUDE = 40°51'27.76"	(40.507711)	LATITUDE = 40°50'28.92"	(40.508311)
LONGITUDE = 104°51'47.62"	(104.863228)	LONGITUDE = 104°51'47.53"	(104.863203)	LONGITUDE = 104°52'04.25"	(104.867847)
NAD 27 (TARGET BOTTOM HOLE)		NAD 27 (ENTRY POINT)		NAD 27 (SURFACE LOCATION)	
LATITUDE = 40°49'43.94"	(40.895539)	LATITUDE = 40°50'27.82"	(40.507728)	LATITUDE = 40°50'28.99"	(40.508331)
LONGITUDE = 104°51'45.73"	(104.862703)	LONGITUDE = 104°51'45.63"	(104.862675)	LONGITUDE = 104°52'02.36"	(104.867322)