

1801 Broadway
Suite 500
Denver, Colorado 80202



Shannon Hartnett
Regulatory Compliance Specialist
Tel: 303.398.0351
E-mail: shartnett@gwogco.com

October 25, 2013

Colorado Oil and Gas Conservation Commission
1120 Lincoln Street, Suite 801
Denver, Colorado 80203

RE: **Proposed Wellbore Spacing Unit**
Tailholt FD 11-379HN
Tailholt FD 11-378HC
Tailholt FD 11-374HN
Tailholt FD 11-373HC
Tailholt FD 11-372HN

Township 6 North, Range 67 West, 6th P.M.
Section 11: West ½
Weld County, Colorado

Dear Director:

Great Western Operating Company, LLC is planning to drill the above captioned well in accordance with the provisions of COGCC Rule 318(l)e(2).

Great Western proposed wellbore spacing unit consists of:

- **West ½ of Section 11 T3N-R68W**

Great Western Operating Company, LLC respectfully requests that the COGCC review the enclosed map illustrating the proposed wellbore spacing unit.

Respectfully,

A handwritten signature in blue ink, appearing to read "Shannon Hartnett". The signature is fluid and cursive.

Shannon Hartnett
Regulatory Compliance Specialist
Great Western Operating Company, LLC

T6N, R67W, 6th P.M.

GREAT WESTERN OIL & GAS COMPANY

Well location, TAILHOLT FD #11-379HN, located as shown in the NW 1/4 NW 1/4 of Section 11, T6N, R67W, 6th P.M., Weld County, Colorado.

BASIS OF ELEVATION

USGS COOPERATIVE BASE NETWORK CONTROL STATION, DESIGNATION 'VERMILYEA'. NGS DATA SHEET LISTS THE NAVD 88 ELEVATION AS BEING 5026 FEET

BASIS OF BEARINGS

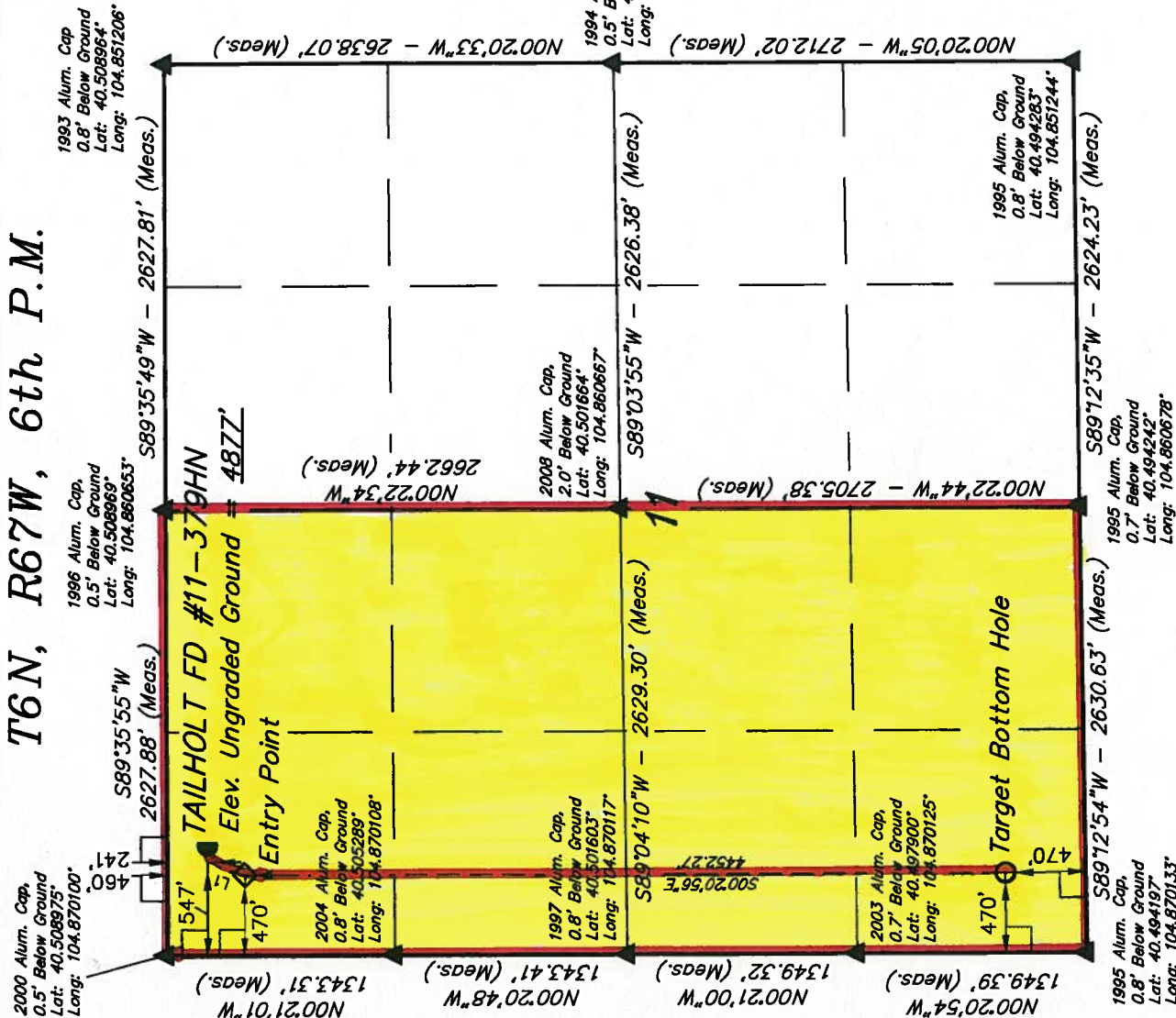
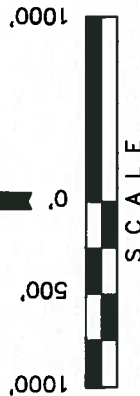
BASIS OF BEARINGS IS A G.P.S. OBSERVATION.

LEGEND:

- 90° SYMBOL
- PROPOSED WELL HEAD.
- PROPOSED ENTRY POINT.
- PROPOSED TARGET BOTTOM HOLE.
- SECTION CORNERS LOCATED.

LINE TABLE		
LINE	DIRECTION	LENGTH
L1	S19°02'43"W	232.55'

1994 Alum. Cap.
0.5' Below Ground
Lat: 40.501725°
Long: 104.851225°



CERTIFICATE

THIS IS TO CERTIFY THAT THE ABOVE PLATON, AS PREPARED FROM FIELD NOTES OF ACTUAL SURVEYS MADE BY ME OR UNDER MY SUPERVISION AND THAT THE SAME ARE TRUE AND CORRECT TO THE BEST OF MY KNOWLEDGE AND BELIEF.

REVISED: 09-10-13
REVISED: 05-24-13
REVISED: 03-26-13
REVISED: 10-12-12

REGISTERED LAND SURVEYOR
STATE OF COLORADO
EXPIRATION DATE: 09-17-13

UTAH ENGINEERING & LAND SURVEYING
85 SOUTH 200 EAST - VERNAL, UTAH 84078
(435) 789-1017

SCALE 1" = 1000'		DATE SURVEYED: 07-24-12	DATE DRAWN: 07-26-12
PARTY	D.N. G.W. J.W.	REFERENCES G.L.O. PLAT	
WEATHER	HOT	FILE GREAT WESTERN OIL & GAS COMPANY	

PDOP = 2.0		NAD 83 (SURFACE LOCATION)	
		LATITUDE = 40°30'29.93"	(40.508314)
		LONGITUDE = 104°52'05.29"	(104.868136)
		NAD 27 (SURFACE LOCATION)	
		LATITUDE = 40°30'30.00"	(40.508333)
		LONGITUDE = 104°52'03.39"	(104.867608)