

The Road to Excellence Starts with Safety

Sold To #: 352431	Ship To #: 3096269	Quote #:	Sales Order #: 900730850
Customer: CONOCO/PHILLIPS COMPANY EBUSINESS		Customer Rep: Tolman, Ben	
Well Name: Youngberg	Well #: 10-11-1H	API/UWI #: 05-005-07211	
Field: WILDCAT	City (SAP): BENNETT	County/Parish: Arapahoe	State: Colorado
Legal Description: Section 11 Township 4S Range 64W			
Lat: N 39.713 deg. OR N 39 deg. 42 min. 46.98 secs.		Long: W 104.509 deg. OR W -105 deg. 29 min. 27.6 secs.	
Job Purpose: Cement Surface Casing			
Well Type: Development Well		Job Type: Cement Surface Casing	
Sales Person: GROFF, THEODORE		Srvc Supervisor: PICKELL, CHRISTOPHER	MBU ID Emp #: 396838

Job Personnel

HES Emp Name	Exp Hrs	Emp #	HES Emp Name	Exp Hrs	Emp #	HES Emp Name	Exp Hrs	Emp #
ALVARADO, JOSE	9.5	505918	JEWELL, WILLIAM Uris	9.5	503358	MASCORRO, OSCAR	9.5	123456
PICKELL, CHRISTOPHER Lee	9.5	396838	SIMMONS, KEATON	9.5	524850	TORREY, SPENCER	9.5	549837

Equipment

HES Unit #	Distance-1 way	HES Unit #	Distance-1 way	HES Unit #	Distance-1 way	HES Unit #	Distance-1 way
10025030	40 mile	11106651	40 mile	11562546C	40 mile	11566182	40 mile
11605597	40 mile	11645063	40 mile	11667703C	40 mile		

Job Hours

Date	On Location Hours	Operating Hours	Date	On Location Hours	Operating Hours	Date	On Location Hours	Operating Hours
9/10/13	4.5	2	9/11/13	5	4			
TOTAL			Total is the sum of each column separately					

Job

Formation Name	Top	Bottom	Called Out	Date	Time	Time Zone
Formation Depth (MD)			On Location	10 - Sep - 2013	16:00	MST
Form Type	BHST		Job Started	10 - Sep - 2013	19:30	MST
Job depth MD	1968. ft	Job Depth TVD	Job Started	10 - Sep - 2013	01:30	MST
Water Depth		Wk Ht Above Floor	Job Completed	11 - Sep - 2013	03:24	MST
Perforation Depth (MD)	From	To	Departed Loc	11 - Sep - 2013	05:00	MST

Well Data

Description	New / Used	Max pressure psig	Size in	ID in	Weight lbm/ft	Thread	Grade	Top MD ft	Bottom MD ft	Top TVD ft	Bottom TVD ft
13-1/2" Open Hole				13.5				100.	1968.		
16" Casing	Unknown		16.	15.5					100.		
9-5/8" Casing	Unknown		9.625	8.921	36.	STC	J-55		1958.		

Tools and Accessories

Type	Size	Qty	Make	Depth	Type	Size	Qty	Make	Depth	Type	Size	Qty	Make
Guide Shoe					Packer					Top Plug			
Float Shoe					Bridge Plug					Bottom Plug			
Float Collar					Retainer					SSR plug set			
Insert Float										Plug Container			
Stage Tool										Centralizers			

Miscellaneous Materials

Gelling Agt	Conc	Surfactant	Conc	Acid Type	Qty	Conc	%
Treatment Fld	Conc	Inhibitor	Conc	Sand Type	Size	Qty	

Fluid Data

Stage/Plug #: 1

Fluid #	Stage Type	Fluid Name	Qty	Qty uom	Mixing Density lbm/gal	Yield ft ³ /sk	Mix Fluid Gal/sk	Rate bbl/min	Total Mix Fluid Gal/sk
1	Clean Spacer III		50.00	bbl	10.5	3.86	24.21	6	
2	SwiftCem B2	SWIFTCM (TM) SYSTEM (452990)	420.0	sacks	12.	2.56	15.09	6	15.09
	15.086 Gal	FRESH WATER							
3	SwiftCem B2	SWIFTCM (TM) SYSTEM (452990)	200.0	sacks	13.	2.01	10.99	6	10.99
	10.989 Gal	FRESH WATER							
Calculated Values		Pressures		Volumes					
Displacement	148 BBL	Shut In: Instant		Lost Returns	0 BBL	Cement Slurry	263 BBL	Pad	
Top Of Cement	0 FT	5 Min		Cement Returns	95 BBL	Actual Displacement	150.5	Treatment	
Frac Gradient		15 Min		Spacers	50 BBL	Load and Breakdown		Total Job	
Rates									
Circulating		Mixing	6	Displacement	6	Avg. Job			6
Cement Left In Pipe	Amount	44.3 ft	Reason	Shoe Joint					
Frac Ring # 1 @	ID	Frac ring # 2 @	ID	Frac Ring # 3 @	ID	Frac Ring # 4 @	ID		
The Information Stated Herein Is Correct				Customer Representative Signature					

The Road to Excellence Starts with Safety

Sold To #: 352431	Ship To #: 3096269	Quote #:	Sales Order #: 900730850
Customer: CONOCO/PHILLIPS COMPANY EBUSINESS		Customer Rep: Tolman, Ben	
Well Name: Youngberg	Well #: 10-11-1H	API/UWI #: 05-005-07211	
Field: WILDCAT	City (SAP): BENNETT	County/Parish: Arapahoe	State: Colorado
Legal Description: Section 11 Township 4S Range 64W			
Lat: N 39.713 deg. OR N 39 deg. 42 min. 46.98 secs.		Long: W 104.509 deg. OR W -105 deg. 29 min. 27.6 secs.	
Contractor:	Rig/Platform Name/Num: H&P 280		
Job Purpose: Cement Surface Casing	Ticket Amount:		
Well Type: Development Well	Job Type: Cement Surface Casing		
Sales Person: GROFF, THEODORE	Srv Supervisor: PICKELL, CHRISTOPHER	MBU ID Emp #: 396838	

Activity Description	Date/Time	Cht #	Rate bbl/min	Volume bbl		Pressure psig		Comments
				Stage	Total	Tubing	Casing	
Pre-Job Safety Meeting	09/10/2013 01:00							PRE JOB SAFETY MEETING WITH ALL PERSONEL INVOLVED WITH THE JOB ON LOCATION TO DISCUSS SAFETY AND PROCEDURE
Start Job	09/10/2013 01:30							BOTTOM PLUG PRELOADED IN CASING. TOP PLUG PRELOADED IN SCREW IN PLUG CONTAINER
Test Lines	09/10/2013 01:33		1	3			3000.0	PRESSURE TEST LINES TO 3000 PSI. CHECK FOR VISIBLE LEAKS AND PRESSURE LOSS
Drop Bottom Plug	09/10/2013 01:36							PLUG ALREADY IN CASING PUMPED AWAY
Pump Spacer 1	09/10/2013 01:39		6	50	53		100.0	PUMP CLEAN SPACER III 50 BBL 10.5 PPG 2.67 CUFT/SK 16.75 GAL/SK MIXED WITH RIG WATER
Pump Lead Cement	09/10/2013 01:50		6	191.5	244.5		110.0	PUMP SWIFTCM CEMENT 420 SKS 12 PPG 2.56 CUFT/SK 15.12 GAL/SK MIXED WITH RIG WATER
Activity Description	Date/Time	Cht #	Rate bbl/min	Volume bbl		Pressure psig		Comments
				Stage	Total	Tubing	Casing	

Pump Tail Cement	09/10/2013 02:24		6	71.6	316.1		120.0	PUMP SWIFTC CEMENT 200 SKS 13 PPG 2.01 CUFT/SK 11.01 GAL/SK MIXED WITH RIG WATER. CEMENT TO SURFACE WITH 55 BBL OF TAIL AWAY
Shutdown	09/10/2013 02:41							
Clean Lines	09/10/2013 02:43							WASH PUMPS AND LINES TO THE PIT
Drop Top Plug	09/10/2013 02:47							PLUG PRELOADED IN PLUG CONTAINER. DROP WITNESSED BY COMPANY MAN
Pump Displacement	09/10/2013 02:48		6	149.5	465.6		550.0	PUMP DISPLACEMENT USING WATER. RETURNS DIVERTED TO PIT WITH 20 BBL AWAY. ABNORMAL PSI SPIKES OCCURED WHILE DISPLACING
Shutdown	09/10/2013 03:17							SHUTDOWN AFTER PUMPING 1.5 BBL OVER CALCULATED DISPLACEMENT
Pump Displacement	09/10/2013 03:18		3	1	466.6		450.0	PUMP 1 MORE BBL, ATTEMPTING TO BUMP THE PLUG
Shutdown	09/10/2013 03:19							SHUTDOWN HAVING NOT BUMPED THE PLUG
Check Floats	09/10/2013 03:21							PRESSURE WAS RELEASED AFTER 2 MINUTES. FLOATS HELD. 1/2 BBL BACK TO TANKS
End Job	09/10/2013 03:24							AFTER THE JOB IT WAS DISCOVERED THAT PINS IN THE WELL HEAD HAD NOT BEEN PULLED BACK OUT AFTER BEING PUT IN TO GO THREW RIG FLOOR. PLUGS LIKEY TO BE SITTING ON THE PINS. EXPLAINING WHY PLUG WASNT LANDED ON FLOAT COLLAR
Activity Description	Date/Time	Cht	Rate bbl/ min	Volume bbl	Pressure psig	Comments		

		#		Stage	Total	Tubing	Casing	
Pre-Rig Down Safety Meeting	09/10/2013 03:30							RIG DOWN SAFETY MEETING WITH ALL PERSONEL INVOLVED WITH THE JOB TO DISCUSS RIG DOWN SAFETY AND PROCEDURE
Rig-Down Equipment	09/10/2013 03:45							LINES WERE BLOWN OUT AND RIGGED DOWN
Safety Meeting - Departing Location	09/10/2013 04:55							CONOCOPHILLIPS SAFETY OBSERVATION CHECKLIST'S WERE FILLED OUT AND TURNED IN. JOURNEY BACK TO THE YARD WAS DISCUSSED ALONG WITH ALL HAZARDS
Depart Location for Service Center or Other Site	09/10/2013 05:00							DEPART LOCATION
Depart Yard Safety Meeting	09/10/2013 18:20							SAFETY MEETING TO DISCUSS ROUTE AND JOURNEY TO LOCATION. DISCUSS ALL HAZARDS WE COULD INCOUNTER
Depart from Service Center or Other Site	09/10/2013 18:30							LEAVE THE YARD WITH ONE PICKUP, ONE PUMP TRUCK, TWO 660'S AND ONE BODY LOAD. 6 PEOPLE TOTAL
Arrive At Loc	09/10/2013 19:30							ARRIVE AT LOCATION 2 HOURS EARLY FOR 3 PEOPLE TO TAKE CONOCO SAFETY TRAINING. RIG HAD 6 JOINTS LEFT
Pre-Rig Up Safety Meeting	09/10/2013 21:00							SAFETY MEETING TO DISCUSS SPOTTING TRUCKS/ RIG UP SAFETY AND PROCEDURE
Rig-Up Equipment	09/10/2013 21:10							SPOT IN TRUCKS. THEN HAVE A SAFETY MEETING TO DISCUSS RIG UP. RIG UP ALL IRON

Sold To #: 352431

Ship To #: 3096269

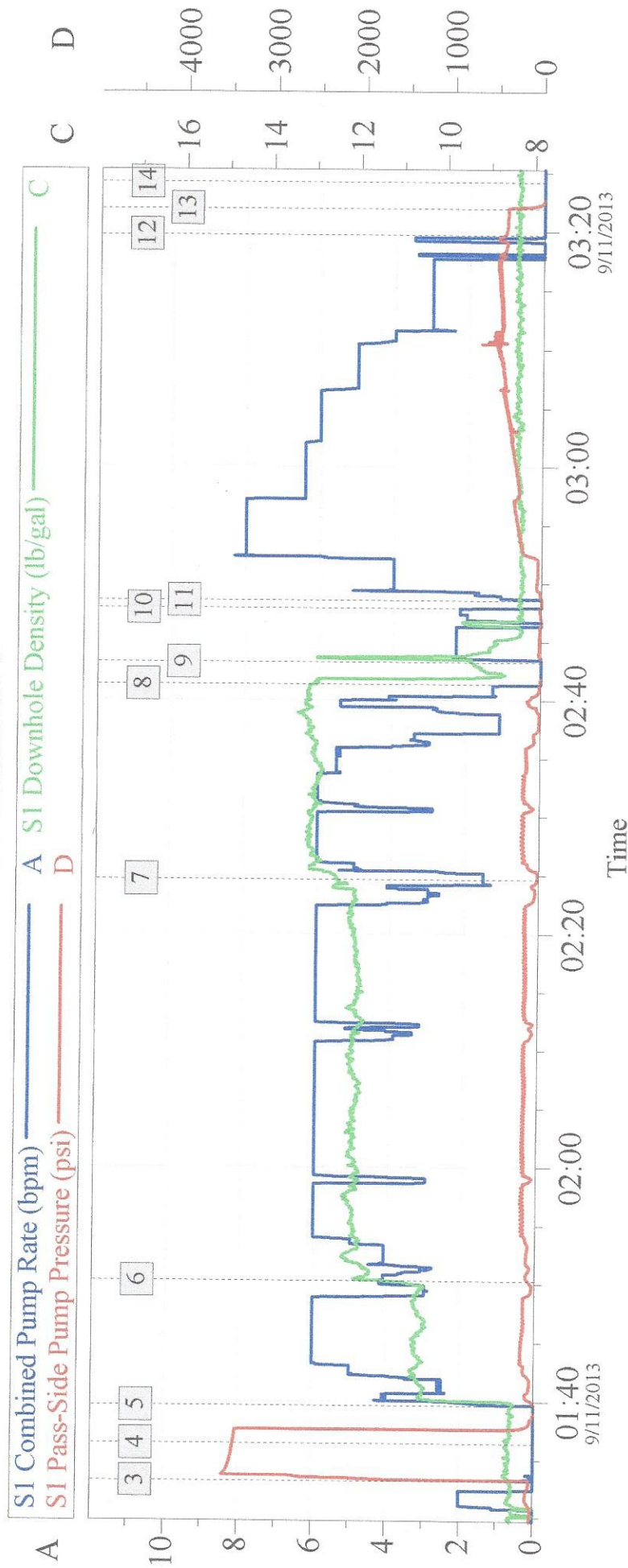
Quote #:

Sales Order #: 900730850

SUMMIT Version: 7.3.0106

Wednesday, September 11, 2013 04:43:00

YOUNGBERG 10-11-1H CONOCOPHILLIPS



Global Event Log				
Intersection	SPPP	Intersection	SPPP	
3 Test Lines	01:33:08 47.00	4 Drop Bottom Plug	01:36:24 3383	
5 Pump Clean Spacer 10.5#	01:39:39 -2.000	6 Pump Swiftcem 12#	01:50:14 73.02	
7 Pump Swiftcem 13#	02:24:39 19.59	8 Shutdown	02:41:21 9.908	
9 Clean Lines	02:43:15 -8.000	10 Drop Top Plug	02:47:53 14.29	
11 Pump Displacement	02:48:31 0.000	12 Shutdown	03:19:42 444.9	
13 Check Floats	03:21:54 405.0	14 End Job	03:24:09 -5.000	

Material Roll Up

Sales Order #: 900730850

AFE #:

Crew: RED CREW

WO #:

Requested Job Start Date:

PO #:

Colorado Oil and Gas Commission Wellsite Form

Customer: CONOCOPHILLIPS

Field: NIOBRARA

Job Type: SURFACE

UWI / API Number: 05-005-07211

County/Parish: ARAPAHOE

Service Supervisor: CHRISTOPHER
PICKELL

Well Name: YOUNGBERG

State: COLORADO

Well No: 10-11-1H

Latitude:

Stage / Zone:

Longitude:

Cust Rep Name:

Formation:

Sect / Twn / Rng: / /

Cust Rep Phone #:

Do Not leave the yard without the proper MSDS documentation for All chemicals.

Colorado Oil and Gas Commission					
Material	Delivered to Location	UOM	Specific Gravity	Weight (lbs)	Comment
SWIFTCEN 12#	9/10/13	LB		43671	BLEND CEMENT WITH ADDITIVES
SWIFTCEN 13#	9/10/13	LB		220796	BLEND CEMENT WITH ADDITIVES
		LB			BLEND CEMENT WITH ADDITIVES
		LB			BLEND CEMENT WITH ADDITIVES
CLEAN SPACER	9/10/13	LB		7322	BLEND WITH ADDITIVES
		Gal			CLAY WEB
		Gal			D-AIR

☒

Operator provided all Material Safety Data Sheets (MSDS) related to material listed above.

Operator representative will check box to designate he/she has received all MSDS documentation.

Operator Representative Signature

Job Date: 10-Sep-2013

The Road to Excellence Starts with Safety

Customer: CONOCO/PHILLIPS COMPANY
EBUSINESS

UWI / API Number: 05-005-07211

Well Name: Youngberg

Well No: 10-11-1H

Formation:

Field: Wildcat

County/Parish: Arapahoe

State: Colorado

Latitude: North 39deg. 42min
46.98sec

Longitude: West -104deg. -30min -32.4sec

Sect / Twn / Rng: 11 / 4 South / 64 West

Job Type: CMT SURFACE
CASING BOM

HES Employee:

Customer Name: Ben Tolman

Customer Phone #:

HALLIBURTON ONSITE SAFETY PERSON **WILLIAM JEWELL**

Employee's Name & Emp #	Company	Location	Pre-Rig-Up	Pre-Job	Post-Job
William Jewell (00503358)					
Christopher Pickell (00396838)					
Spencer Torrey (549837)					
Keaton Simmons (524850)					
Jose Alvarado (505918)					
Oscar Mascorro (123456)					
	TOTAL HALLIBURTON			TOTAL OTHER	