

BONANZA CREEK OIL COMPANY

Location: COLORADO Slot: SLOT#01 STATE ANTELOPE K-O-30HNB (542'FNL & 1256'FWL, SEC.30)
Field: WELD COUNTY Well: STATE ANTELOPE K-O-30HNB
Facility: SEC.30-T5N-R62W Wellbore: STATE ANTELOPE K-O-30HNB PWB

Plot reference wellpath is STATE ANTELOPE K-O-30HNB (REV-B.0) PWB

True vertical depths are referenced to CADE 22 (RKB)

Measured depths are referenced to CADE 22 (RKB)

CADE 22 (RKB) to Mean Sea Level: 4625 feet

Mean Sea Level to Mud line (At Slot: SLOT#01 STATE ANTELOPE K-O-30HNB (542'FNL & 1256'FWL, SEC.30)): 0 feet

Coordinates are in feet referenced to Slot

Grid System: NAD83 / Lambert Colorado SP, Northern Zone (501), US feet

North Reference: True north

Scale: True distance

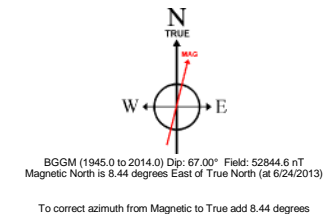
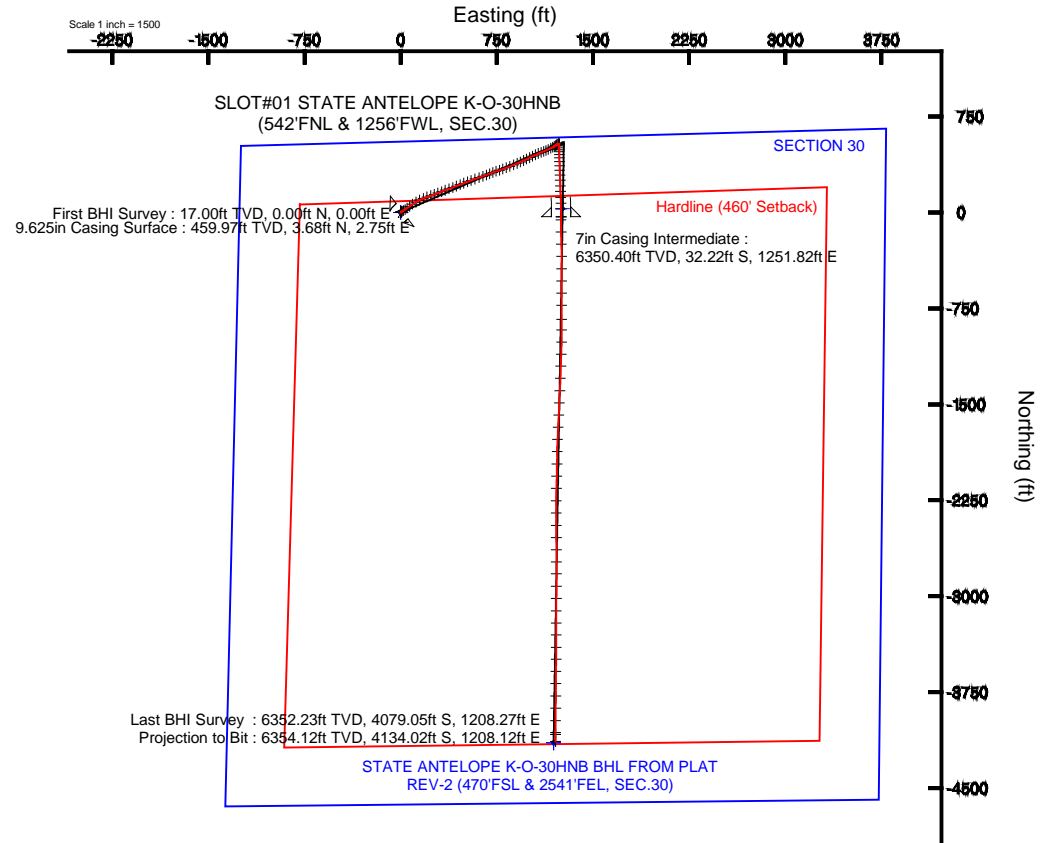
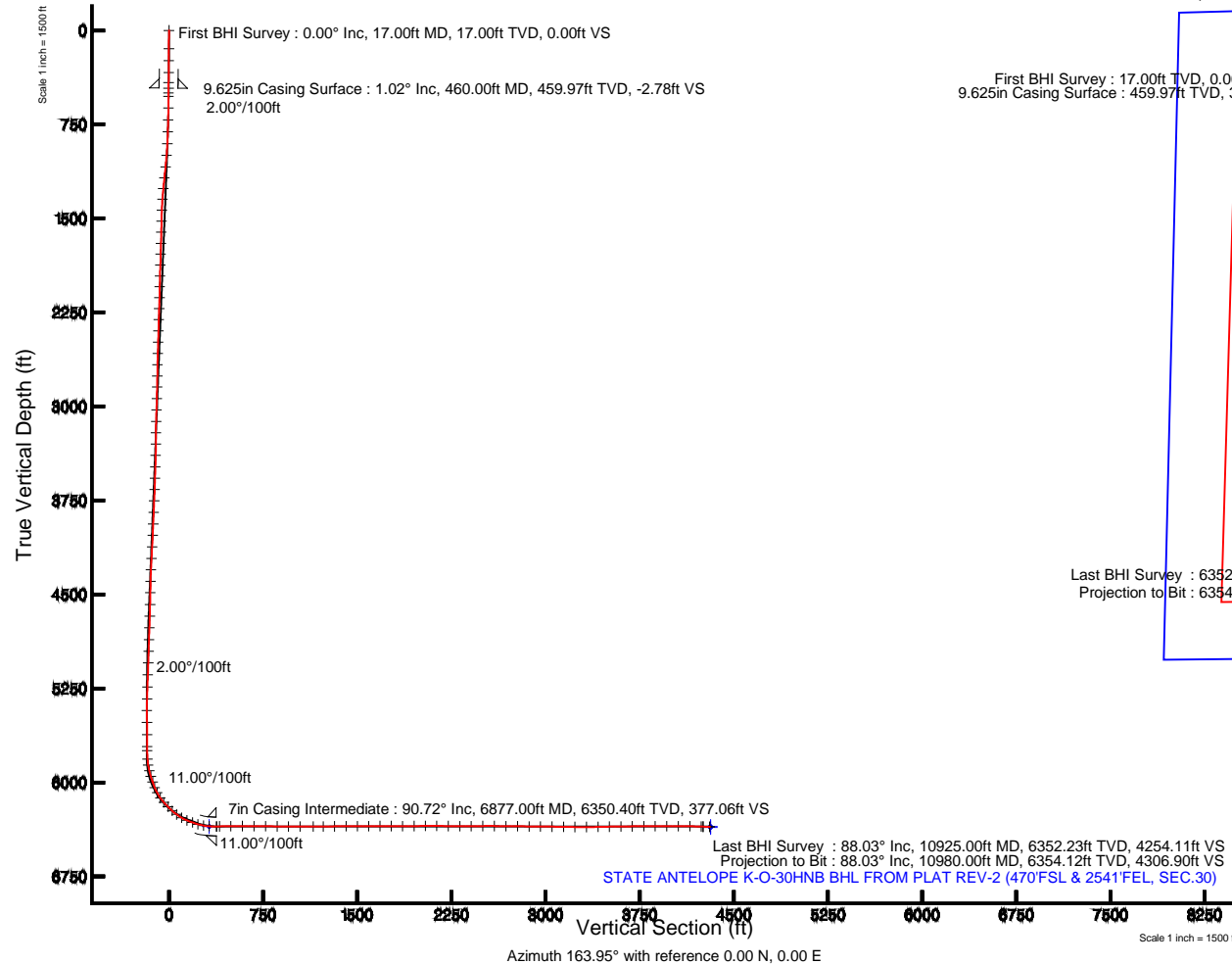
Depths are in feet

Created by: guenaler on 8/21/2013



Location Information

Facility Name			Grid East (US ft)	Grid North (US ft)	Latitude	Longitude
SEC.30-T5N-R62W			3314735.928	1381829.438	40°22'33.672"N	104°22'13.080"W
Slot	Local N (ft)	Local E (ft)	Grid East (US ft)	Grid North (US ft)	Latitude	Longitude
SLOT#01 STATE ANTELOPE K-O-30HNB (542'FNL & 1256'FWL, SEC.30)	0.00	0.00	3314735.928	1381829.438	40°22'33.672"N	104°22'13.080"W
CADE 22 (RKB) to Mud line (At Slot: SLOT#01 STATE ANTELOPE K-O-30HNB (542'FNL & 1256'FWL, SEC.30))					4625ft	
Mean Sea Level to Mud line (At Slot: SLOT#01 STATE ANTELOPE K-O-30HNB (542'FNL & 1256'FWL, SEC.30))					0ft	
CADE 22 (RKB) to Mean Sea Level					4625ft	





Actual Wellpath Report

STATE ANTELOPE K-O-30HNB AWP

Page 1 of 7



REFERENCE WELLPATH IDENTIFICATION

Operator	BONANZA CREEK OIL COMPANY	Slot	SLOT#01 STATE ANTELOPE K-O-30HNB (542'FNL & 1256'FWL, SEC.30)
Area	COLORADO	Well	STATE ANTELOPE K-O-30HNB
Field	WELD COUNTY	Wellbore	STATE ANTELOPE K-O-30HNB AWB
Facility	SEC.30-T5N-R62W		

REPORT SETUP INFORMATION

Projection System	NAD83 / Lambert Colorado SP, Northern Zone (501), US feet	Software System	WellArchitect® 4.0.0
North Reference	True	User	Guenaler
Scale	0.999959	Report Generated	8/21/2013 at 2:35:54 PM
Convergence at slot	n/a	Database/Source file	WA_Denver/STATE_ANTELOPE_K-O-30HNB_AWB.xml

WELLPATH LOCATION

	Local coordinates		Grid coordinates		Geographic coordinates	
	North[ft]	East[ft]	Easting[US ft]	Northing[US ft]	Latitude	Longitude
Slot Location	0.00	0.00	3314735.93	1381829.44	40°22'33.672"N	104°22'13.080"W
Facility Reference Pt			3314735.93	1381829.44	40°22'33.672"N	104°22'13.080"W
Field Reference Pt			3327718.19	1377782.99	40°21'52.020"N	104°19'26.040"W

WELLPATH DATUM

Calculation method	Minimum curvature	CADE 22 (RKB) to Facility Vertical Datum	4625.00ft
Horizontal Reference Pt	Slot	CADE 22 (RKB) to Mean Sea Level	4625.00ft
Vertical Reference Pt	CADE 22 (RKB)	CADE 22 (RKB) to Mud Line at Slot (SLOT#01 STATE ANTELOPE K-O-30HNB (542'FNL & 1256'FWL, SEC.30))	4625.00ft
MD Reference Pt	CADE 22 (RKB)	Section Origin	N 0.00, E 0.00 ft
Field Vertical Reference	Mean Sea Level	Section Azimuth	163.71°



Actual Wellpath Report

STATE ANTELOPE K-O-30HNB AWP

Page 2 of 7



REFERENCE WELLPATH IDENTIFICATION

Operator	BONANZA CREEK OIL COMPANY	Slot	SLOT#01 STATE ANTELOPE K-O-30HNB (542'FNL & 1256'FWL, SEC.30)
Area	COLORADO	Well	STATE ANTELOPE K-O-30HNB
Field	WELD COUNTY	Wellbore	STATE ANTELOPE K-O-30HNB AWB
Facility	SEC.30-T5N-R62W		

WELLPATH DATA (130 stations)

MD [ft]	Inclination [°]	Azimuth [°]	TVD [ft]	Vert Sect [ft]	North [ft]	East [ft]	Latitude	Longitude	DLS [°/100ft]	Comments
0.00	0.000	22.170	0.00	0.00	0.00	0.00	40°22'33.672"N	104°22'13.080"W	0.00	
17.00	0.000	22.170	17.00	0.00	0.00	0.00	40°22'33.672"N	104°22'13.080"W	0.00	First BHI Survey
145.00	0.440	22.170	145.00	-0.38	0.46	0.19	40°22'33.676"N	104°22'13.078"W	0.34	
241.00	0.610	29.630	240.99	-1.03	1.24	0.58	40°22'33.684"N	104°22'13.073"W	0.19	
336.00	0.980	31.370	335.99	-1.93	2.37	1.25	40°22'33.695"N	104°22'13.064"W	0.39	
417.00	0.890	58.480	416.97	-2.56	3.29	2.15	40°22'33.705"N	104°22'13.052"W	0.55	
498.00	1.140	54.300	497.96	-2.99	4.09	3.34	40°22'33.712"N	104°22'13.037"W	0.32	
525.00	1.460	56.520	524.96	-3.18	4.44	3.84	40°22'33.716"N	104°22'13.030"W	1.20	
619.00	2.990	61.830	618.88	-4.04	6.26	7.00	40°22'33.734"N	104°22'12.990"W	1.64	
715.00	5.020	54.320	714.64	-5.95	9.89	12.62	40°22'33.770"N	104°22'12.917"W	2.18	
810.00	7.080	61.400	809.11	-8.58	15.12	21.14	40°22'33.821"N	104°22'12.807"W	2.30	
905.00	10.790	56.450	902.94	-12.47	22.84	33.70	40°22'33.898"N	104°22'12.645"W	3.98	
1001.00	13.480	55.780	996.79	-18.58	34.10	50.44	40°22'34.009"N	104°22'12.428"W	2.81	
1096.00	15.980	53.240	1088.66	-26.56	48.15	70.08	40°22'34.148"N	104°22'12.175"W	2.72	
1189.00	19.130	55.980	1177.32	-35.68	64.34	92.97	40°22'34.308"N	104°22'11.879"W	3.50	
1279.00	20.620	59.370	1261.96	-44.10	80.67	118.83	40°22'34.469"N	104°22'11.545"W	2.09	
1370.00	20.440	62.560	1347.18	-51.14	96.16	146.72	40°22'34.622"N	104°22'11.184"W	1.25	
1463.00	20.100	67.810	1434.43	-55.92	109.68	175.93	40°22'34.756"N	104°22'10.807"W	1.99	
1556.00	19.810	71.480	1521.85	-58.18	120.72	205.67	40°22'34.865"N	104°22'10.423"W	1.38	
1649.00	18.050	70.430	1609.82	-59.62	130.55	234.19	40°22'34.962"N	104°22'10.054"W	1.93	
1742.00	18.820	68.510	1698.04	-61.80	140.87	261.73	40°22'35.064"N	104°22'09.698"W	1.05	
1834.00	20.120	69.800	1784.78	-64.23	151.77	290.39	40°22'35.172"N	104°22'09.328"W	1.49	
1926.00	18.310	67.680	1871.65	-66.82	162.73	318.61	40°22'35.280"N	104°22'08.963"W	2.11	
2019.00	19.390	69.640	1959.67	-69.45	173.65	346.60	40°22'35.388"N	104°22'08.602"W	1.35	
2110.00	21.150	71.020	2045.03	-71.30	184.24	376.29	40°22'35.493"N	104°22'08.218"W	2.00	
2202.00	19.190	70.110	2131.38	-73.02	194.79	406.20	40°22'35.597"N	104°22'07.832"W	2.16	
2295.00	19.030	67.570	2219.26	-75.60	205.77	434.59	40°22'35.705"N	104°22'07.465"W	0.91	
2387.00	20.090	69.650	2305.95	-78.33	216.99	463.27	40°22'35.816"N	104°22'07.094"W	1.38	
2483.00	18.180	68.690	2396.64	-80.81	228.17	492.68	40°22'35.927"N	104°22'06.714"W	2.02	
2579.00	18.910	69.210	2487.65	-83.34	239.13	521.18	40°22'36.035"N	104°22'06.346"W	0.78	



Actual Wellpath Report

STATE ANTELOPE K-O-30HNB AWP

Page 3 of 7



REFERENCE WELLPATH IDENTIFICATION

Operator	BONANZA CREEK OIL COMPANY	Slot	SLOT#01 STATE ANTELOPE K-O-30HNB (542'FNL & 1256'FWL, SEC.30)
Area	COLORADO	Well	STATE ANTELOPE K-O-30HNB
Field	WELD COUNTY	Wellbore	STATE ANTELOPE K-O-30HNB AWB
Facility	SEC.30-T5N-R62W		

WELLPATH DATA (130 stations)

MD [ft]	Inclination [°]	Azimuth [°]	TVD [ft]	Vert Sect [ft]	North [ft]	East [ft]	Latitude	Longitude	DLS [°/100ft]	Comments
2673.00	19.100	68.630	2576.53	-85.89	250.14	549.74	40°22'36.144"N	104°22'05.977"W	0.29	
2769.00	20.390	71.810	2666.89	-87.84	261.09	580.26	40°22'36.252"N	104°22'05.583"W	1.75	
2865.00	19.830	70.210	2757.03	-89.39	271.82	611.47	40°22'36.358"N	104°22'05.179"W	0.82	
2959.00	18.620	70.290	2845.79	-91.25	282.28	640.60	40°22'36.461"N	104°22'04.803"W	1.29	
3054.00	17.120	69.660	2936.21	-93.15	292.26	667.99	40°22'36.560"N	104°22'04.449"W	1.59	
3149.00	17.230	66.690	3026.97	-95.85	302.68	694.02	40°22'36.663"N	104°22'04.113"W	0.93	
3245.00	16.400	69.810	3118.87	-98.51	312.99	719.80	40°22'36.765"N	104°22'03.780"W	1.28	
3339.00	16.090	71.870	3209.11	-99.83	321.62	744.63	40°22'36.850"N	104°22'03.459"W	0.70	
3434.00	17.010	72.700	3300.18	-100.50	329.85	770.41	40°22'36.931"N	104°22'03.126"W	1.00	
3529.00	17.260	69.470	3390.96	-101.79	338.92	796.88	40°22'37.021"N	104°22'02.784"W	1.04	
3625.00	17.950	68.890	3482.47	-104.08	349.25	824.02	40°22'37.123"N	104°22'02.433"W	0.74	
3721.00	18.420	68.340	3573.67	-106.75	360.17	851.91	40°22'37.231"N	104°22'02.072"W	0.52	
3816.00	19.130	67.120	3663.62	-109.94	371.77	880.20	40°22'37.346"N	104°22'01.707"W	0.85	
3911.00	18.000	66.390	3753.67	-113.59	383.70	908.00	40°22'37.463"N	104°22'01.348"W	1.21	
4007.00	17.060	66.600	3845.21	-117.23	395.23	934.51	40°22'37.577"N	104°22'01.005"W	0.98	
4103.00	15.690	65.650	3937.32	-120.79	406.18	959.26	40°22'37.686"N	104°22'00.685"W	1.45	
4197.00	15.470	63.500	4027.86	-124.79	417.01	982.06	40°22'37.793"N	104°22'00.391"W	0.66	
4292.00	16.010	63.420	4119.30	-129.38	428.53	1005.12	40°22'37.906"N	104°22'00.093"W	0.57	
4388.00	15.080	62.920	4211.79	-134.08	440.13	1028.08	40°22'38.021"N	104°21'59.796"W	0.98	
4482.00	15.940	65.660	4302.37	-138.18	451.02	1050.72	40°22'38.129"N	104°21'59.504"W	1.20	
4578.00	14.910	69.340	4394.91	-140.97	460.81	1074.29	40°22'38.225"N	104°21'59.199"W	1.48	
4672.00	13.290	68.580	4486.07	-142.85	469.02	1095.67	40°22'38.307"N	104°21'58.923"W	1.73	
4768.00	12.120	67.270	4579.72	-144.97	476.95	1115.24	40°22'38.385"N	104°21'58.670"W	1.26	
4863.00	12.030	66.950	4672.62	-147.25	484.68	1133.54	40°22'38.461"N	104°21'58.433"W	0.12	
4958.00	12.380	64.810	4765.47	-150.00	492.89	1151.87	40°22'38.542"N	104°21'58.197"W	0.60	
5054.00	11.630	63.910	4859.37	-153.23	501.53	1169.87	40°22'38.628"N	104°21'57.964"W	0.81	
5149.00	9.690	63.350	4952.73	-156.30	509.32	1185.62	40°22'38.705"N	104°21'57.761"W	2.04	
5244.00	7.890	59.730	5046.61	-159.32	516.20	1198.40	40°22'38.773"N	104°21'57.595"W	1.98	
5339.00	5.920	56.170	5140.92	-162.37	522.21	1208.10	40°22'38.832"N	104°21'57.470"W	2.12	
5436.00	4.820	46.480	5237.49	-165.74	527.80	1215.21	40°22'38.887"N	104°21'57.378"W	1.47	



Actual Wellpath Report

STATE ANTELOPE K-O-30HNB AWP

Page 4 of 7



REFERENCE WELLPATH IDENTIFICATION

Operator	BONANZA CREEK OIL COMPANY	Slot	SLOT#01 STATE ANTELOPE K-O-30HNB (542'FNL & 1256'FWL, SEC.30)
Area	COLORADO	Well	STATE ANTELOPE K-O-30HNB
Field	WELD COUNTY	Wellbore	STATE ANTELOPE K-O-30HNB AWB
Facility	SEC.30-T5N-R62W		

WELLPATH DATA (130 stations)

MD [ft]	Inclination [°]	Azimuth [°]	TVD [ft]	Vert Sect [ft]	North [ft]	East [ft]	Latitude	Longitude	DLS [°/100ft]	Comments
5531.00	4.740	55.840	5332.16	-168.77	532.76	1221.35	40°22'38.936"N	104°21'57.299"W	0.82	
5625.00	3.610	74.990	5425.92	-169.90	535.70	1227.43	40°22'38.965"N	104°21'57.220"W	1.89	
5721.00	2.360	97.080	5521.79	-169.04	536.24	1232.31	40°22'38.971"N	104°21'57.157"W	1.75	
5817.00	1.170	79.130	5617.74	-168.17	536.18	1235.23	40°22'38.970"N	104°21'57.120"W	1.35	
5912.00	0.700	135.350	5712.73	-167.57	535.95	1236.59	40°22'38.968"N	104°21'57.102"W	1.02	
5944.00	0.750	157.190	5744.73	-167.19	535.62	1236.81	40°22'38.965"N	104°21'57.099"W	0.87	
6012.00	3.650	180.900	5812.67	-164.67	533.05	1236.95	40°22'38.939"N	104°21'57.097"W	4.38	
6060.00	8.940	184.410	5860.36	-159.72	527.80	1236.64	40°22'38.887"N	104°21'57.101"W	11.04	
6107.00	13.500	183.000	5906.45	-151.12	518.67	1236.07	40°22'38.797"N	104°21'57.109"W	9.72	
6154.00	18.080	180.390	5951.67	-138.95	505.89	1235.73	40°22'38.671"N	104°21'57.113"W	9.86	
6201.00	19.700	173.530	5996.14	-124.16	490.73	1236.57	40°22'38.521"N	104°21'57.102"W	5.84	
6248.00	23.040	178.060	6039.91	-107.44	473.66	1237.78	40°22'38.352"N	104°21'57.087"W	7.92	
6295.00	28.370	178.430	6082.24	-87.71	453.29	1238.40	40°22'38.151"N	104°21'57.079"W	11.35	
6344.00	36.610	179.180	6123.54	-62.33	427.00	1238.93	40°22'37.891"N	104°21'57.072"W	16.84	
6389.00	42.460	178.980	6158.23	-34.72	398.37	1239.39	40°22'37.608"N	104°21'57.066"W	13.00	
6438.00	45.000	178.780	6193.63	-2.03	364.51	1240.05	40°22'37.274"N	104°21'57.057"W	5.19	
6485.00	49.580	177.670	6225.50	31.40	330.00	1241.13	40°22'36.933"N	104°21'57.043"W	9.90	
6532.00	53.830	177.800	6254.62	67.18	293.15	1242.59	40°22'36.568"N	104°21'57.025"W	9.05	
6581.00	60.420	177.940	6281.20	107.06	252.05	1244.12	40°22'36.162"N	104°21'57.005"W	13.45	
6630.00	68.700	178.510	6302.24	149.85	207.86	1245.48	40°22'35.726"N	104°21'56.987"W	16.93	
6677.00	70.390	178.170	6318.66	192.46	163.84	1246.76	40°22'35.291"N	104°21'56.971"W	3.66	
6725.00	73.850	177.730	6333.40	236.73	118.19	1248.39	40°22'34.840"N	104°21'56.950"W	7.26	
6772.00	80.730	177.590	6343.73	281.20	72.41	1250.26	40°22'34.387"N	104°21'56.926"W	14.64	
6818.00	86.360	179.020	6348.90	325.41	26.74	1251.61	40°22'33.936"N	104°21'56.908"W	12.62	
6880.00	90.940	180.650	6350.36	384.94	-35.22	1251.79	40°22'33.324"N	104°21'56.906"W	7.84	
6903.00	91.020	180.680	6349.97	406.94	-58.22	1251.52	40°22'33.096"N	104°21'56.909"W	0.37	
6999.00	90.800	179.200	6348.44	499.10	-154.20	1251.62	40°22'32.148"N	104°21'56.908"W	1.56	
7094.00	90.280	178.100	6347.55	590.88	-249.17	1253.86	40°22'31.209"N	104°21'56.879"W	1.28	
7189.00	89.160	179.830	6348.01	682.53	-344.15	1255.58	40°22'30.271"N	104°21'56.857"W	2.17	
7285.00	89.470	180.380	6349.16	774.62	-440.14	1255.40	40°22'29.322"N	104°21'56.860"W	0.66	



Actual Wellpath Report

STATE ANTELOPE K-O-30HNB AWP

Page 5 of 7



REFERENCE WELLPATH IDENTIFICATION

Operator	BONANZA CREEK OIL COMPANY	Slot	SLOT#01 STATE ANTELOPE K-O-30HNB (542'FNL & 1256'FWL, SEC.30)
Area	COLORADO	Well	STATE ANTELOPE K-O-30HNB
Field	WELD COUNTY	Wellbore	STATE ANTELOPE K-O-30HNB AWB
Facility	SEC.30-T5N-R62W		

WELLPATH DATA (130 stations)

MD [ft]	Inclination [°]	Azimuth [°]	TVD [ft]	Vert Sect [ft]	North [ft]	East [ft]	Latitude	Longitude	DLS [°/100ft]	Comments
7381.00	89.410	179.880	6350.10	866.70	-536.13	1255.18	40°22'28.374"N	104°21'56.862"W	0.52	
7476.00	89.720	180.140	6350.82	957.87	-631.13	1255.17	40°22'27.435"N	104°21'56.863"W	0.43	
7571.00	89.750	179.780	6351.26	1049.08	-726.13	1255.23	40°22'26.496"N	104°21'56.862"W	0.38	
7681.00	90.310	179.760	6351.20	1154.78	-836.13	1255.67	40°22'25.409"N	104°21'56.856"W	0.51	
7762.00	90.250	179.340	6350.80	1232.71	-917.13	1256.31	40°22'24.609"N	104°21'56.848"W	0.52	
7857.00	90.900	181.560	6349.85	1323.67	-1012.11	1255.56	40°22'23.670"N	104°21'56.858"W	2.43	
7953.00	90.620	182.120	6348.58	1414.90	-1108.05	1252.48	40°22'22.722"N	104°21'56.898"W	0.65	
8047.00	90.030	181.650	6348.04	1504.20	-1202.00	1249.39	40°22'21.794"N	104°21'56.938"W	0.80	
8142.00	90.060	182.230	6347.97	1594.43	-1296.94	1246.17	40°22'20.856"N	104°21'56.979"W	0.61	
8238.00	90.250	182.610	6347.71	1685.36	-1392.86	1242.12	40°22'19.908"N	104°21'57.032"W	0.44	
8333.00	89.750	182.630	6347.71	1775.23	-1487.76	1237.78	40°22'18.970"N	104°21'57.088"W	0.53	
8428.00	90.060	182.850	6347.87	1865.04	-1582.65	1233.24	40°22'18.032"N	104°21'57.147"W	0.40	
8524.00	90.220	182.980	6347.63	1955.70	-1678.53	1228.35	40°22'17.085"N	104°21'57.210"W	0.21	
8620.00	90.770	182.400	6346.80	2046.47	-1774.42	1223.85	40°22'16.137"N	104°21'57.268"W	0.83	
8715.00	89.350	180.950	6346.70	2136.84	-1869.37	1221.07	40°22'15.199"N	104°21'57.304"W	2.14	
8812.00	89.540	181.160	6347.64	2229.42	-1966.35	1219.29	40°22'14.241"N	104°21'57.327"W	0.29	
8907.00	89.600	181.240	6348.36	2320.03	-2061.33	1217.30	40°22'13.302"N	104°21'57.353"W	0.11	
9003.00	90.430	181.770	6348.33	2411.43	-2157.29	1214.78	40°22'12.354"N	104°21'57.386"W	1.03	
9099.00	90.710	180.700	6347.38	2502.97	-2253.26	1212.71	40°22'11.406"N	104°21'57.412"W	1.15	
9195.00	89.350	179.400	6347.33	2595.09	-2349.26	1212.62	40°22'10.457"N	104°21'57.413"W	1.96	
9291.00	89.510	179.330	6348.28	2687.52	-2445.25	1213.69	40°22'09.509"N	104°21'57.400"W	0.18	
9387.00	89.380	179.810	6349.21	2779.86	-2541.24	1214.41	40°22'08.560"N	104°21'57.391"W	0.52	
9482.00	89.380	179.920	6350.24	2871.11	-2636.23	1214.63	40°22'07.621"N	104°21'57.388"W	0.12	
9577.00	89.540	179.970	6351.13	2962.31	-2731.23	1214.72	40°22'06.683"N	104°21'57.387"W	0.18	
9671.00	89.200	179.930	6352.17	3052.56	-2825.22	1214.80	40°22'05.754"N	104°21'57.386"W	0.36	
9767.00	88.770	180.110	6353.87	3144.68	-2921.21	1214.77	40°22'04.805"N	104°21'57.386"W	0.49	
9863.00	89.970	180.430	6354.92	3236.69	-3017.20	1214.32	40°22'03.857"N	104°21'57.392"W	1.29	
9959.00	89.750	180.360	6355.16	3328.65	-3113.20	1213.66	40°22'02.908"N	104°21'57.401"W	0.24	
10054.00	91.270	179.790	6354.31	3419.79	-3208.19	1213.53	40°22'01.969"N	104°21'57.402"W	1.71	
10148.00	91.180	179.970	6352.30	3510.05	-3302.17	1213.73	40°22'01.041"N	104°21'57.400"W	0.21	



Actual Wellpath Report

STATE ANTELOPE K-O-30HNB AWP

Page 6 of 7



REFERENCE WELLPATH IDENTIFICATION

Operator	BONANZA CREEK OIL COMPANY	Slot	SLOT#01 STATE ANTELOPE K-O-30HNB (542'FNL & 1256'FWL, SEC.30)
Area	COLORADO	Well	STATE ANTELOPE K-O-30HNB
Field	WELD COUNTY	Wellbore	STATE ANTELOPE K-O-30HNB AWB
Facility	SEC.30-T5N-R62W		

WELLPATH DATA (130 stations)

MD [ft]	Inclination [°]	Azimuth [°]	TVD [ft]	Vert Sect [ft]	North [ft]	East [ft]	Latitude	Longitude	DLS [°/100ft]	Comments
10244.00	90.590	180.340	6350.82	3602.11	-3398.16	1213.47	40°22'00.092"N	104°21'57.403"W	0.73	
10338.00	90.840	180.520	6349.65	3692.13	-3492.15	1212.76	40°21'59.163"N	104°21'57.412"W	0.33	
10434.00	90.090	181.420	6348.87	3783.80	-3588.13	1211.14	40°21'58.215"N	104°21'57.433"W	1.22	
10529.00	90.190	180.350	6348.64	3874.57	-3683.11	1209.67	40°21'57.276"N	104°21'57.452"W	1.13	
10625.00	89.880	179.830	6348.58	3966.67	-3779.11	1209.52	40°21'56.328"N	104°21'57.454"W	0.63	
10721.00	90.490	180.460	6348.27	4058.74	-3875.11	1209.28	40°21'55.379"N	104°21'57.458"W	0.91	
10817.00	88.600	180.390	6349.03	4150.68	-3971.10	1208.57	40°21'54.431"N	104°21'57.467"W	1.97	
10911.00	88.080	179.950	6351.75	4240.79	-4065.06	1208.29	40°21'53.502"N	104°21'57.471"W	0.72	
10925.00	88.030	180.160	6352.23	4254.22	-4079.05	1208.27	40°21'53.364"N	104°21'57.471"W	1.54	Last BHI Survey
10980.00	88.030	180.160	6354.12	4306.93	-4134.02	1208.12	40°21'52.821"N	104°21'57.473"W	0.00	Projection to Bit

HOLE & CASING SECTIONS -

Ref Wellbore: STATE ANTELOPE K-O-30HNB AWB Ref Wellpath: STATE ANTELOPE K-O-30HNB AWP

String/Diameter	Start MD [ft]	End MD [ft]	Interval [ft]	Start TVD [ft]	End TVD [ft]	Start N/S [ft]	Start E/W [ft]	End N/S [ft]	End E/W [ft]
9.625in Casing Surface	17.00	460.00	443.00	17.00	459.97	0.00	0.00	3.68	2.75
8.75in Open Hole	17.00	6865.00	6848.00	17.00	6350.46	0.00	0.00	-20.22	1251.91
7in Casing Intermediate	17.00	6877.00	6860.00	17.00	6350.40	0.00	0.00	-32.22	1251.82
6.125in Open Hole	6877.00	10980.00	4103.00	6350.40	6354.12	-32.22	1251.82	-4134.02	1208.12

WELLPATH COMPOSITION -

Ref Wellbore: STATE ANTELOPE K-O-30HNB AWB Ref Wellpath: STATE ANTELOPE K-O-30HNB AWP

Start MD [ft]	End MD [ft]	Positional Uncertainty Model	Log Name/Comment	Wellbore
0.00	6818.00	NaviTrak (Standard)	BHI/Navitrak MWD 8.75" HOLE <17'-6818'>	STATE ANTELOPE K-O-30HNB AWB
6818.00	10925.00	NaviTrak (MagCorr)	BHI/Navitrak MWD 6.125" HOLE <6880'-10925'>	STATE ANTELOPE K-O-30HNB AWB
10925.00	10980.00	Blind Drilling (std)	Projection to bit	STATE ANTELOPE K-O-30HNB AWB



Actual Wellpath Report

STATE ANTELOPE K-O-30HNB AWP

Page 7 of 7



REFERENCE WELLPATH IDENTIFICATION			
Operator	BONANZA CREEK OIL COMPANY	Slot	SLOT#01 STATE ANTELOPE K-O-30HNB (542'FNL & 1256'FWL, SEC.30)
Area	COLORADO	Well	STATE ANTELOPE K-O-30HNB
Field	WELD COUNTY	Wellbore	STATE ANTELOPE K-O-30HNB AWB
Facility	SEC.30-T5N-R62W		

WELLPATH COMMENTS				
MD [ft]	Inclination [°]	Azimuth [°]	TVD [ft]	Comment
17.00	0.000	22.170	17.00	First BHI Survey
10925.00	88.030	180.160	6352.23	Last BHI Survey
10980.00	88.030	180.160	6354.12	Projection to Bit