



Scale: 5" / 100'  
Measured Depth Log

Well Name      State North Platte F-J-36HNB

Location      NWNW Sec 36, T5N, R63W

State      Colorado

County      Weld

Country      USA

Rig Number      Ensign 128

API Number      05-123-37728-00

Region      DJ Basin

Field      Wattenberg

Spud Date      8/23/2013

Drilling Completed      8/31/2013

Surface Coordinates      370' FNL x 521' FWL (Lat 40.36217, 104.39207)

Bottom Hole Coordinates      470' FSL x 1290' FWL (Lat 40.35028, 104.38951)

Ground Elevation      4543'

K.B. Elevation      4558'

Logged Interval      5900'      To      10821'

Total Depth      10821'

Formation      Niobrara B Chalk

Type of Drilling Fluid      H2O, LSND

Company      Bonanza Creek

Name      Paul McKay

Company      Bonanza Creek

Address      410 17th Street  
Denver, CO 80202



Operator

Energy Inc.

Geologist

Energy Inc.

, Suite 1500  
2022

Rock Types

CONGLOMERATE	METAMORPHIC	SHALY SILTSTONE
DOLomite	NO SAMPLE	SILT SHALE
GRANITE	SALT	SILTSTONE
GYPSUM	SANDSTONE	TILL
IGNEOUS	SALT-PEPPER SANT	TUFF
SIDERITE or LIMONITE	SHALE	WELDED TUFF
LIMESTONE	SHALE COLORED	
MARLSTONE	SHALE GRAY	
	SHALY SANDSTONE	

Accessories

<b>Fossils</b>	F FOSSIL	ARGILLACEOUS	GLAUCONITE	TUFFACEOUS
GASTROPOD	ARGILLITE GRAIN	GYPSIFEROUS		
ALGAE	OOLITE	B BENTONITE	HEAVY MINERAL	
AMPHIRORA	OSTRACOD	BITUMENOUS SUBSTANCE	INOCERAMUS	ANHYDRITE STRINGER
BELEMITE	PELECYPOD	BRECCIA FRAGMENTS	KAOLIN	BENTONITE STRINGER
BIOCLASTIC	PELLET	CALCAREOUS	MARLSTONE	COAL STRINGER
BRACHIOPOD	PISOLITE	CARBONACEOUS FLAKES	MINERAL CRYSTALS	DOLomite STRINGER
BRYOZOA	PLANT REMAINS	CHTDK	NOODULES	GYPSUM STRINGER
CEPHALOPOD	PLANT SPORES	CHTLT	PHOSPHATE PELLET:	LIMESTONE STRINGER
CORAL	SCAPHOPOD	COAL - THIN BEDS	P PYRITE	MARLSTONE (CALC) STRG
CRINOID	STROMATOPOROID	DOLOMITIC	SALT CAST	MARLSTONE (DOL) STRG
ECHINOID		FELDSPAR	SANDY	SANDSTONE STRINGER
FISH	<b>Minerals</b>	FERRUGINOUS PELLET	SILICEOUS	SHALE STRINGER
FORAMINIFERA	ANHYDRITIC	FERRUGINOUS	SILTY	SILTSTONE STRINGER

Other Symbols

<b>Oil Show</b>	MOLDIC	FAULT	WIRELINE TESTED - LEFT	E EARTHY
DEAD	ORGANIC	FORMATION TOP	WIRELINE TESTED - RT	FX FINELYXLN
EVEN	PINPOINT	GAS SHOW		ES GRAINSTONE
QUESTIONABLE	VUGGY	MINDEPTH MN DEPTH	<b>Rounding</b>	L LITHOGRAPHIC
SPOTTED STAINING			ANGULAR	MX MICROXLN
<b>Engineering</b>			ROUNDED	MS MUDSTONE
BIT			SUBANG	PS PACKSTONE
CONNECTION (LEFT)			REVERSE FAULT	WS WACKSTONE
CONNECTION (RIGHT)			SIDEWALL CORE (LEFT)	
FENESTRAL			SIDEWALL CORE (RIGHT)	
FRACTURE			SLIDE	
INTERCRYSTALLINE			SURVEY	BS BOUNDSTONE
INTEROOLITIC			TRIP GAS	C CHALKY
				CX CRYPTOXLN
				M MODERATE
				P POOR
				W WELL

ROP  
ROF  
GAMMA

Bit Data  
Bit #: 3  
Type: HE04JMRSV  
Size: 8.75  
Depth In: 5,770 '  
Jets: 3/20  
S/N: 1376487

Total Gas & Chromatograph  
GAS  
C1  
C2  
C3  
C4  
CO2

COLUMBINE LOGGING  
RIGGED UP ON 08/26/2013  
MANNED 2-PERSON  
LOGGING WITH  
BLOODHOUND GAS  
CHROMATOGRAPH UNIT  
#0680 BEGAN ON 08/26/2013

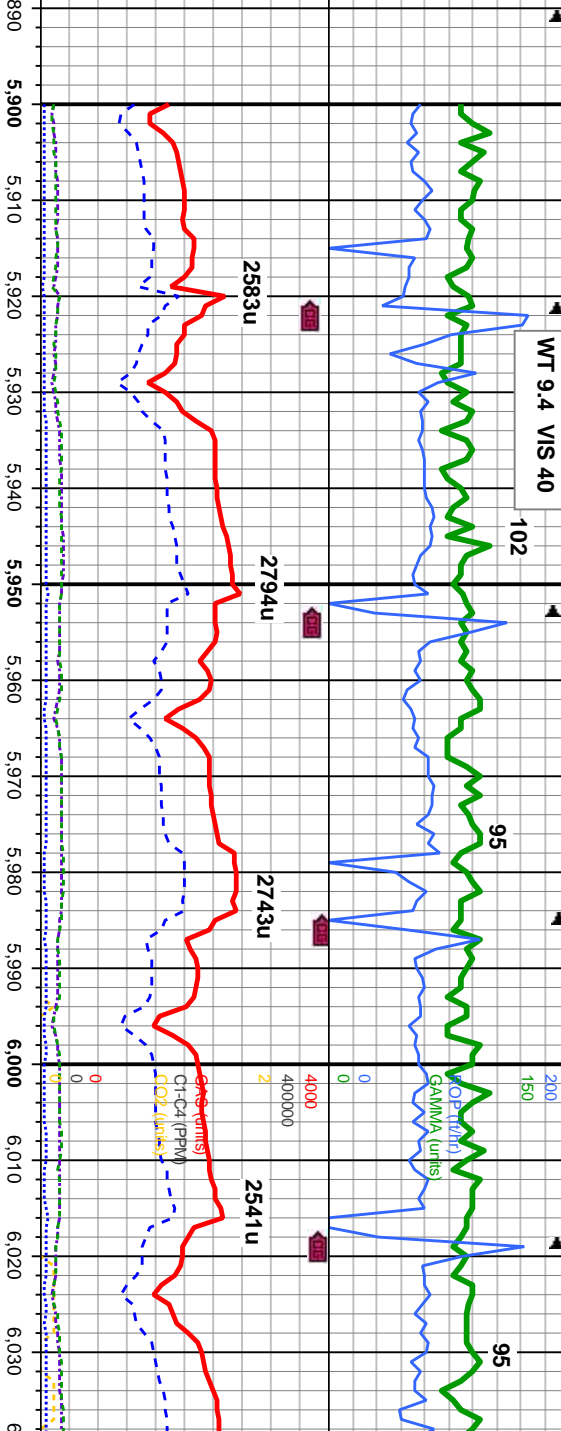
Depth Labels

% Lith

Well Bore  
TVD

Oil Show

Images



MD: 5,868 '  
TVD: 5,770.14 '  
Inclination: 6.7 °  
Azimuth: 187 °  
VS: -223 '

MD: 5,900 '  
TVD: 5,801.81 '  
Inclination: 9.6 °  
Azimuth: 186.8 °  
VS: -218.64 '

MD: 5,932 '  
TVD: 5,833.21 '  
Inclination: 12.6 °  
Azimuth: 187.1 °  
VS: -212.73 '

MD: 5,965 '  
TVD: 5,865.23 '  
Inclination: 15.4 °  
Azimuth: 188.4 °  
VS: -205.11 '

MD: 5,996 '  
TVD: 5,894.92 '  
Inclination: 18 °  
Azimuth: 189.6 °  
VS: -196.65 '

MD: 6,028 '  
TVD: 5,925.07 '  
Inclination: 21.1 °  
Azimuth: 189.4 °  
VS: -186.52 '


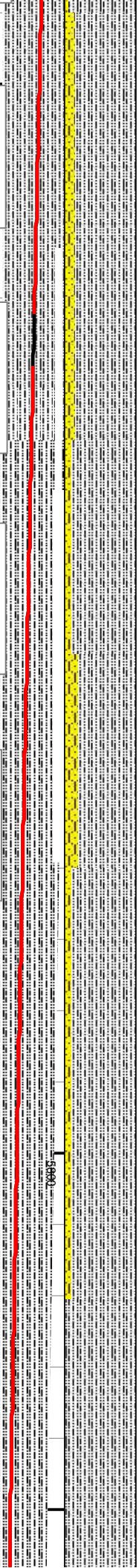
80% SLTY SH: lgy - medgy, occ dk gy, mod sft - sl firm, sb blkly - blkly, occ pily, rthy - gt, mix; arg - silty, sl calc, 20% SHY SS: off wh - dk gy, occ s&p, v-f gr, sb ang - sb rd, mod srt, mod hd - hd, sb blkly - blkly, mics, sl calc, occ SS

90-95% SLTY SH: lgy - medgy, occ dk gy, mod sft - sl firm, sb blkly - blkly, occ pily, rthy - gt, mix; arg - silty, sl calc, 10-5% SHY SS: off wh - dk gy, occ s&p, v-f gr, sb ang - sb rd, mod srt, mod hd - hd, sb blkly - blkly, mics, sl calc, occ SS

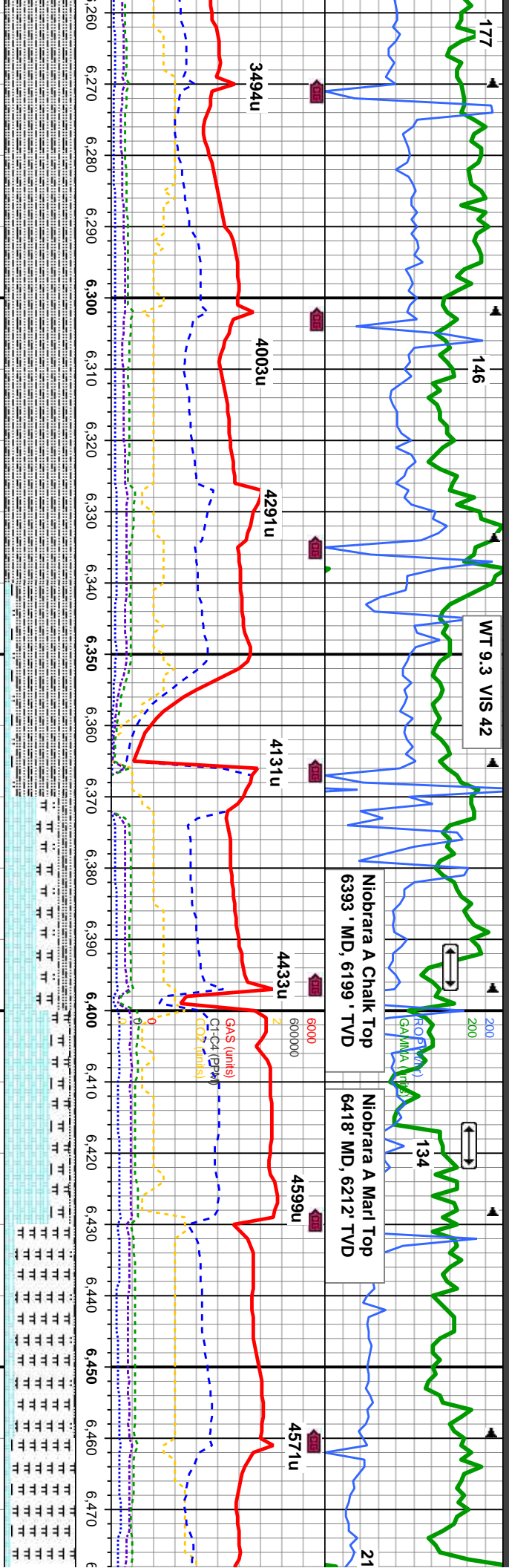
85-90% SLTY SH: lgy - sl firm, sb blkly - blkly, occ pily, rthy - gt, mix; arg - silty, sl calc, 10-15% SHY SS: off wh - dk gy, occ s&p, v-f gr, sb ang - sb rd, mod srt, mod hd - hd, sb blkly - blkly, mics, sl calc, occ SS

TR  
P  
FR  
G  
E









MD: 6,280 '  
TVD: 6,131.96 '  
Inclination: 47.7 °  
Azimuth: 189.6 °  
VS: -53.74 '

MD: 6,312 '  
TVD: 6,152.78 '  
Inclination: 51.1 °  
Azimuth: 189.8 °  
VS: -30.77 '

MD: 6,343 '  
TVD: 6,171.65 '  
Inclination: 53.9 °  
Azimuth: 189.2 °  
VS: -7.5 '

MD: 6,375 '  
TVD: 6,189.85 '  
Inclination: 56.8 °  
Azimuth: 188.7 °  
VS: 17.49 '

MD: 6,407 '  
TVD: 6,206.61 '  
Inclination: 60 °  
Azimuth: 188.2 °  
VS: 43.44 '

MD: 6,438 '  
TVD: 6,221.4 '  
Inclination: 63 °  
Azimuth: 186.8 °  
VS: 69.51 '

MD: 6,470 '  
TVD: 6,235.03 '  
Inclination: 66.6 °  
Azimuth: 185 °  
VS: 97.44 '

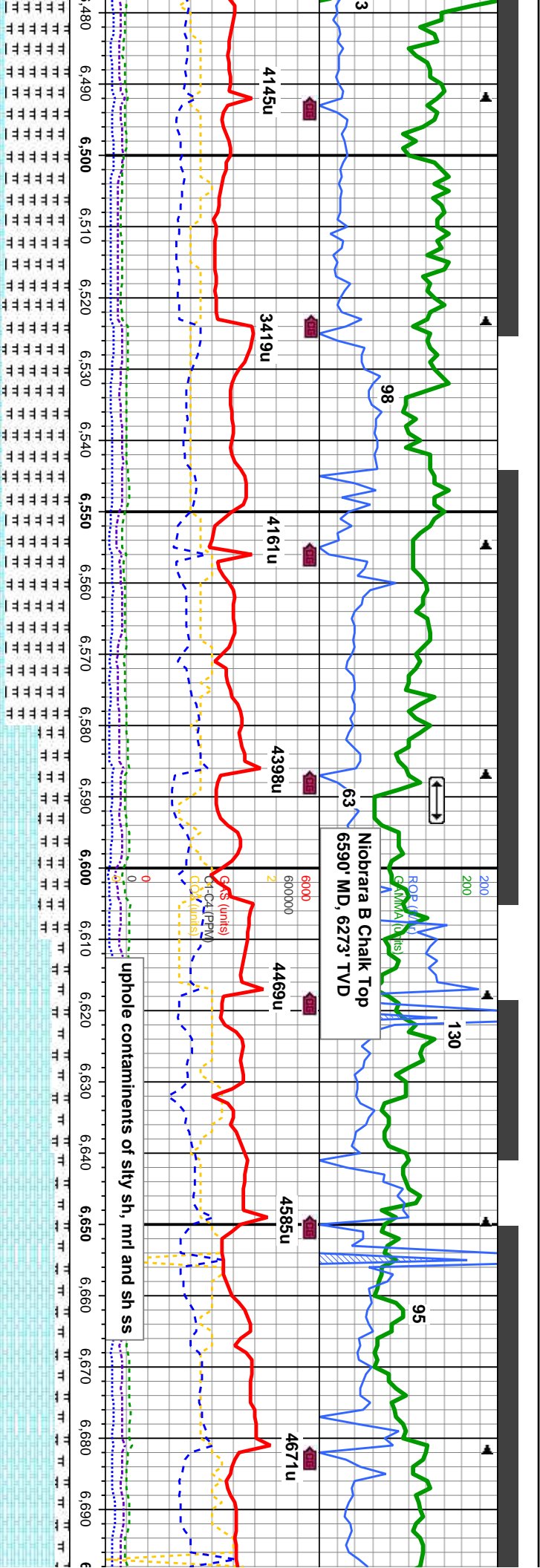
100% SLTY SH: medgy- dk gy, mod sft - firm, sb blkly - blkly, occ pty, rthy - gt, mtx: arg - calc, mics, sl calc, occ shy ss, tr bent

45-65% CHK: lt gy, lt gy bm, mot, sb blkly-blkly, sft-si frm, rthy-sb wxy, mtx: v calc 25%; MRLST: med - dk gy, blk, sb pty - blkly, sl frm - mod hd, arg-sily tex, mtx: calc 30-10% SLTY SH: medgy - dkgy, blk, mod sft - firm, pty - sb blkly, sl rthy - gt, mtx: arg - sily, sl calc, tr bent, some dissm pyr, slw stmg cut, frnt lt bl flor, tr thin

85-90%: MRLST: med - dk gy, blk, sb pty - b mod hd, arg-sily tex, bndding, mtx: calc, 15-1 lt gy, lt gy bm, mot, sb blkly-blkly, sft-si frm, tr mtx: v calc, 5% SLTY SH: medgy - dkgy, blk, firm, pty - sb blkly, sl rthy - gt, mtx: arg - sily, bent







MD: 6,501 '  
TVD: 6,246.46 '  
Inclination: 70.1 °  
Azimuth: 182.9 °  
VS: 125.47 '

MD: 6,533 '  
TVD: 6,256.99 '  
Inclination: 71.5 °  
Azimuth: 181.5 °  
VS: 155.08 '

MD: 6,565 '  
TVD: 6,266.68 '  
Inclination: 73.4 °  
Azimuth: 179.6 °  
VS: 185.11 '

MD: 6,597 '  
TVD: 6,275.07 '  
Inclination: 76.2 °  
Azimuth: 178.2 °  
VS: 215.67 '

MD: 6,628 '  
TVD: 6,281.77 '  
Inclination: 78.8 °  
Azimuth: 178 °  
VS: 245.68 '

MD: 6,660 '  
TVD: 6,287.17 '  
Inclination: 81.8 °  
Azimuth: 177.5 °  
VS: 276.98 '

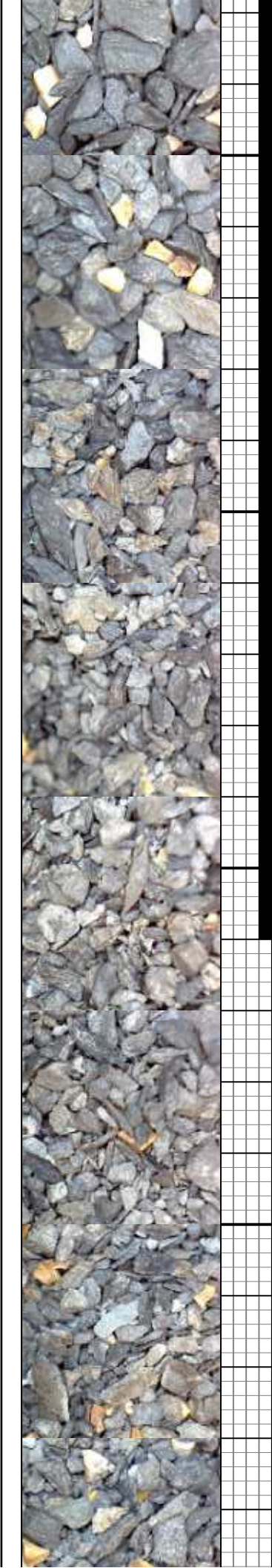
MD: 6,692 '  
TVD: 6,290.84 '  
Inclination: 85 °  
Azimuth: 176.9 °  
VS: 308.55 '

90-95%: MRLST: med - dk gy, blk, sb ply - blk, sl frm  
0% CHK: - mod hd, arg-sily tex, bndd, mtx; calc, tr pyr 10-5%  
ny-sb wxy, CHK: lt gy, lt gy brn, mot, sb blk-ly-bly, sft-si frm,  
mod sft - rthy-sb wxy, mtx; v calc, occ uphole contaminants of  
silty sh and sh ss, tr bent, slw string cut, frt lt bl flor,  
mod thk yel/wht ring, fr stn

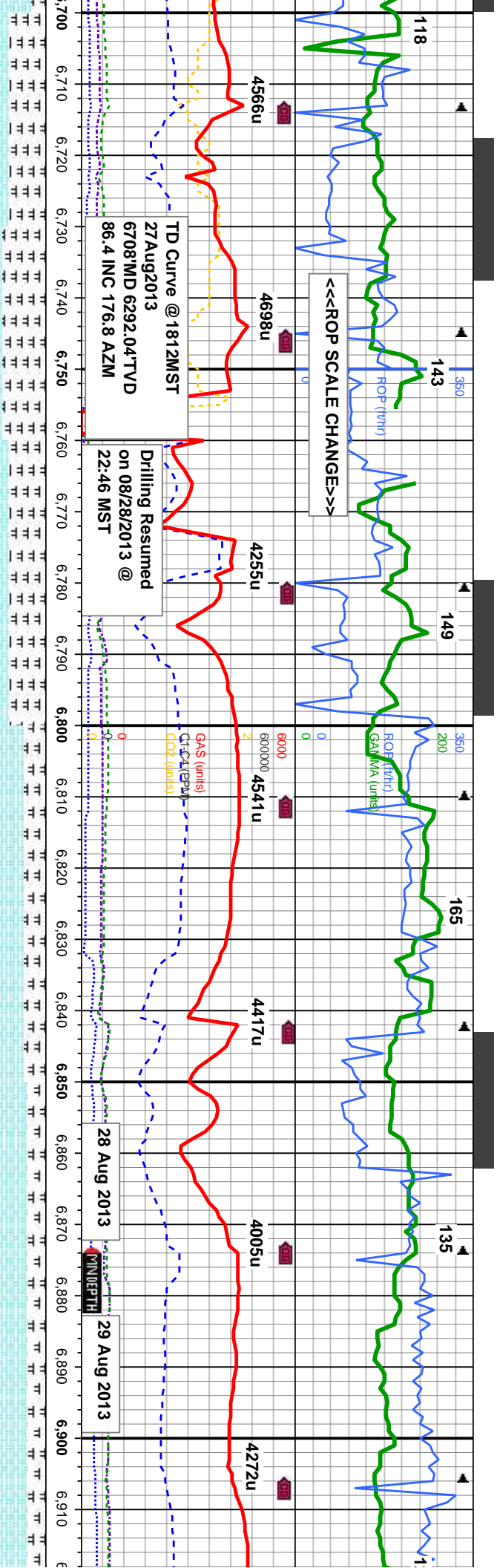
10-55% CHK: lt gy, lt gy brn, mot, sb blk-ly-bly, sft-si  
frm, rthy-sb wxy, mtx; v calc, 90-45%: MRLST: med -  
dk gy, blk, sb ply - blk, sl frm - mod hd, arg-sily tex,  
bndd, mtx; calc, tr pyr, occ uphole contaminants of  
silty sh and sh ss, tr bent, mod fst string cut, g lt bl flor,  
mod thk yel/wht ring, mod fr stn

75-80% CHK: wht-crm, lt gy, occ lt brn, mot, sb  
blk-ly-bly, mod sft-si frm, wxy, mtx; v calc, 30-20%:  
MRLST: med - dk gy, blk, sb ply - blk, sl frm - mod  
hd, arg-sily tex, some bndd, mtx; calc, tr pyr, tr bent, tr  
inoc fos, cal incl, occ uphole contaminants of silty sh,  
sh ss and mrl

80-50% CHK: wht-crm, lt g  
blk-ly-bly, mod sft-si frm, v  
MRLST: med - dk gy, blk, i  
arg-sily tex, some bndd, m  
bent, tr inoc fos, cal incl, o  
silty sh, sh ss and mrl, v slw  
thin yel/wht ring, frt stn







MD: 6,708 '  
TVD: 6,292.04 '  
Inclination: 86.4 °  
Azimuth: 176.8 °  
VS: 324.41 '

60%: MRLST: med - dk gy, blk, sb ply - blk, sl frm - mod hd, arg-sily tex, some bndd, mtb; calc, 40% CHK: wht-crm, lt gy-dk gy, mod, sb blk-ly-biky, mod sft- sl frm, wxy, mtb; v calc, tr bent, tr inoc fos, cal incl, occ uphole contaminants of silty sh, sh ss and ml

TVD (ft)

MD: 6,821 '  
TVD: 6,296.77 '  
Inclination: 88.8 °  
Azimuth: 176.2 °  
VS: 436.72 '

70% CHK: med-dk gry, occ lt gy & lt brn, mod, sb blk-ly-biky, mod sft- sl frm, wxy, mtb; v calc, 30%: MRLST: med - dk gy, sb ply - blk, sl frm - mod hd, arg-sily tex, mtb; calc, tr pyr, tr bent, cal incl, rr uphole contaminants of cmt, fst stmg cut, g lt bl flor, frt yel/wht ring, tr stn

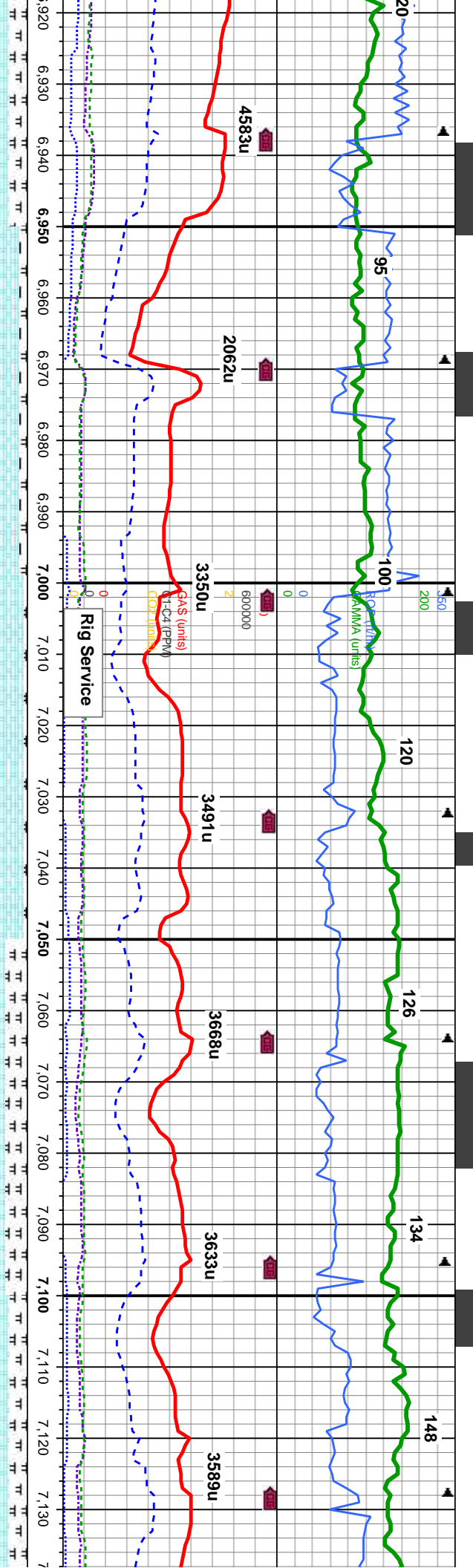
MD: 6,853 '  
TVD: 6,297 '  
Inclination: 90.4 °  
Azimuth: 176.6 °  
VS: 468.55 '

75% CHK: med-dk gry, occ lt gy & lt brn, mod, sb blk-ly-biky, tr calc, 25%: MRLST: med - dk gy, sb ply - blk, sl frm - mod hd, pyr, tr bent, cal incl, mod fst stmg cut, mod g lt bl flor, thn yelw

MD: 6,884 '  
TVD: 6,296.48 '  
Inclination: 91.5 °  
Azimuth: 176.2 °  
VS: 499.39 '

MD: 6,916 '  
TVD: 6,29 '  
Inclination: '  
Azimuth: 1 '  
VS: 531.2 '

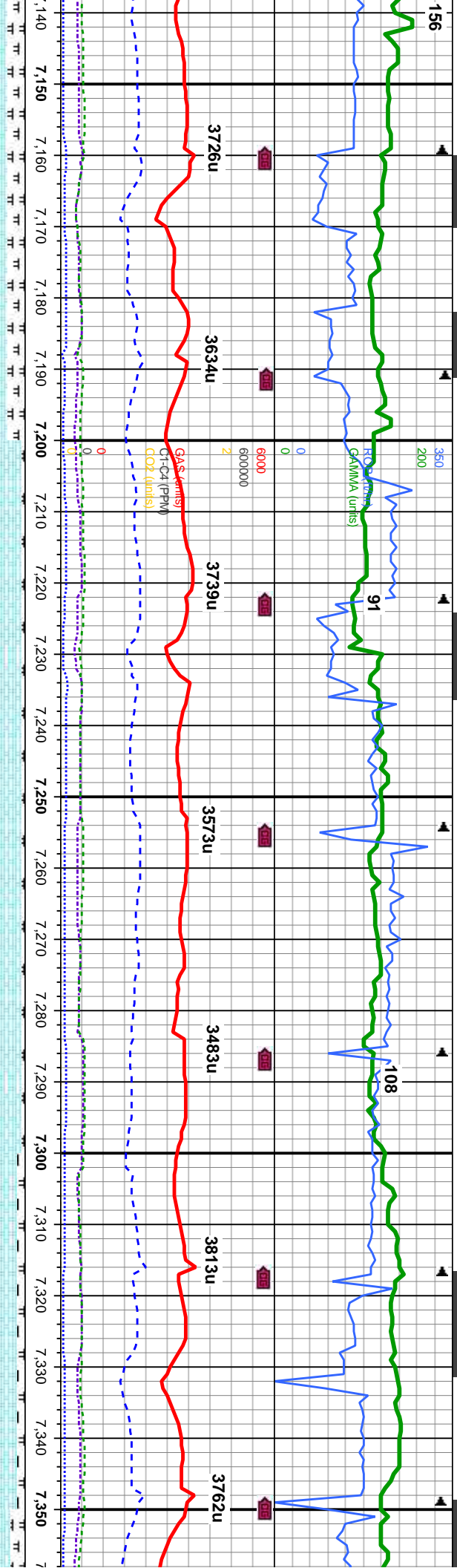




MD: 6,947 ' TVD: 6,294.26 ' Inclination: 92.2 ° Azimuth: 175.9 ° VS: 562.07 ' 90-95% CHK: lt gy-med, occ dk gy, mot, sb blk-y-blky, mod sft- sl frm, wxy, mtx; v calc, 10-5%: MRLST: med - dk gy, sb ply - blk-y, sl frm - mod hd, arg-slly tex, mtx; calc, tr pyr abnt bent, cal incl tr calc fos, mod string cut, frnt lt bl flor, mod thk yel/wht ring, fr sin fr odr	
MD: 6,979 ' TVD: 6,293.03 ' Inclination: 92.2 ° Azimuth: 175.7 ° VS: 593.91 ' 90-95% CHK: lt gy-med, occ dk gy, mot, sb blk-y-blky, mod sft- sl frm, wxy, mtx; v calc, 10-5%: MRLST: med - dk gy, sb ply - blk-y, sl frm - mod hd, arg-slly tex, mtx; calc, tr pyr abnt bent, cal incl tr calc fos, mod string cut, frnt lt bl flor, mod thk yel/wht ring, fr sin fr odr	
MD: 7,011 ' TVD: 6,291.8 ' Inclination: 92.2 ° Azimuth: 175.7 ° VS: 625.77 ' 90-95% CHK: lt gy-med, occ dk gy, mot, sb blk-y-blky, mod sft- sl frm, wxy, mtx; v calc, 10-5%: MRLST: med - dk gy, sb ply - blk-y, sl frm - mod hd, arg-slly tex, mtx; calc, tr pyr abnt bent, cal incl tr calc fos, mod string cut, frnt lt bl flor, mod thk yel/wht ring, fr sin fr odr	
MD: 7,042 ' TVD: 6,290.64 ' Inclination: 92.1 ° Azimuth: 175.4 ° VS: 656.63 ' 70-75% CHK: med gy-dk gy, occ lt gy, mot, sb blk-y-blky, mod sft- sl frm, wxy, mtx; v calc, 30-25%: MRLST: med - dk gy, sb ply - blk-y, sl frm - mod hd, arg-slly tex, mtx; calc, tr bent, tr cal incl, tr inoc fos, mod fst sting cut, v frnt lt bl flor, frnt thin yel/wht ring, tr sin fr odr	
MD: 7,074 ' TVD: 6,289.64 ' Inclination: 91.5 ° Azimuth: 175.9 ° VS: 688.49 ' 70-75% CHK: med gy-dk gy, occ lt gy, mot, sb blk-y-blky, mod sft- sl frm, wxy, mtx; v calc, 30-25%: MRLST: med - dk gy, sb ply - blk-y, sl frm - mod hd, arg-slly tex, mtx; calc, tr bent, tr cal incl, tr inoc fos, mod fst sting cut, v frnt lt bl flor, frnt thin yel/wht ring, tr sin fr odr	
MD: 7,106 ' TVD: 6,288.91 ' Inclination: 91.1 ° Azimuth: 176.9 ° VS: 720.32 ' 70-75% CHK: med gy-dk gy, occ lt gy, mot, sb blk-y-blky, mod sft- sl frm, wxy, mtx; v calc, 30-25%: MRLST: med - dk gy, sb ply - blk-y, sl frm - mod hd, arg-slly tex, mtx; calc, tr bent, tr cal incl, tr inoc fos, mod fst sting cut, v frnt lt bl flor, frnt thin yel/wht ring, tr sin fr odr	
MD: 7,141 ' TVD: 6,288.91 ' Inclination: 91.1 ° Azimuth: 176.9 ° VS: 752.32 ' 70-75% CHK: med gy-dk gy, occ lt gy, mot, sb blk-y-blky, mod sft- sl frm, wxy, mtx; v calc, 30-25%: MRLST: med - dk gy, sb ply - blk-y, sl frm - mod hd, arg-slly tex, mtx; calc, tr bent, tr cal incl, tr inoc fos, mod fst sting cut, v frnt lt bl flor, frnt thin yel/wht ring, tr sin fr odr	





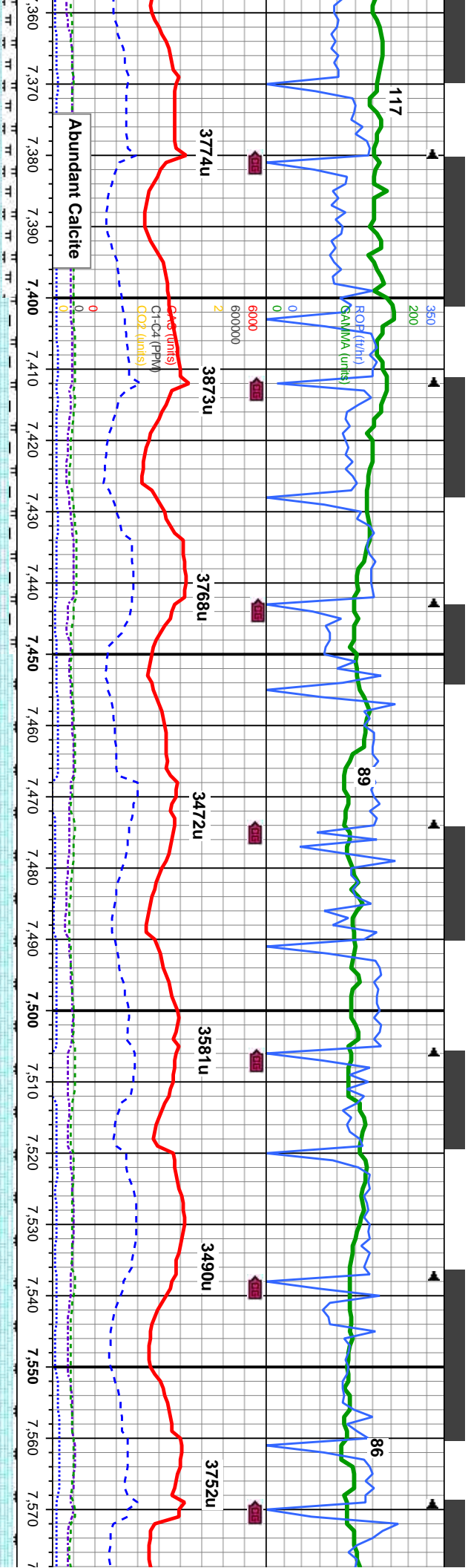


MD: 7,169 ' TVD: 6,288.11 ' Inclination: 90.2 ° Azimuth: 178 ° VS: 782.9 '	MD: 7,201 ' TVD: 6,288.02 ' Inclination: 90.1 ° Azimuth: 178.4 ° VS: 814.62 '	MD: 7,232 ' TVD: 6,288.02 ' Inclination: 89.9 ° Azimuth: 178.9 ° VS: 845.32 '	MD: 7,264 ' TVD: 6,287.91 ' Inclination: 90.5 ° Azimuth: 179.2 ° VS: 876.97 '	MD: 7,295 ' TVD: 6,287.34 ' Inclination: 91.6 ° Azimuth: 179.2 ° VS: 907.62 '	MD: 7,327 ' TVD: 6,286.48 ' Inclination: 91.5 ° Azimuth: 179.2 ° VS: 939.26 '	MD: 7,360 ' TVD: 6,285.88 ' Inclination: 90.8 ° Azimuth: 177.1 ° VS: 969.12 '
--	---	---	---	---	---	---

75-95% CHK: lgy-med gy, occ wht-crm, mot, sb blk-y-blky, some sbply, mod sft-sl frm, wxy, mtz; v calc, 25-5%: MRLST: med - dk gy, sb plty - sb blk-y, sl frm - mod hd, arg-sily tex, mtz; calc, tr inoc fos, fst string cut, frnt lt bl flor, mod g yel/wht ring, tr stn fr odr

90-95% CHK: lgy-med gy, occ wht-crm, mot, sb blk-y-blky, some sbply, mod sft-sl frm, wxy, mtz; v calc, 10-5%: MRLST: med - dk gy, sb plty - sb blk-y, sl frm - mod hd, arg-sily tex, mtz; calc, tr inoc fos, mod fst string cut, frnt lt bl flor, mod thk yel/wht ring, tr stn fr odr





5800

B

B

B

MD: 7.390 ' TVD: 6,285.74 ' Inclination: 90 ° Azimuth: 178.5 ° VS: 1,001.62 '	MD: 7.421 ' TVD: 6,285.91 ' Inclination: 89.4 ° Azimuth: 179.2 ° VS: 1,032.3 '	MD: 7.452 ' TVD: 6,286.31 ' Inclination: 89.1 ° Azimuth: 180.3 ° VS: 1,062.91 '	MD: 7.484 ' TVD: 6,286.45 ' Inclination: 90.4 ° Azimuth: 181.7 ° VS: 1,094.38 '	MD: 7.516 ' TVD: 6,286.89 ' Inclination: 91.6 ° Azimuth: 183.4 ° VS: 1,125.69 '	MD: 7.548 ' TVD: 6,286.25 ' Inclination: 90.7 ° Azimuth: 184 ° VS: 1,156.86 '	MD: 7.57 ' TVD: 6,285.91 ' Inclination: 90.6 ° Azimuth: 178.7 ° VS: 1,189.3 '
---	--	---	---	---	---	---

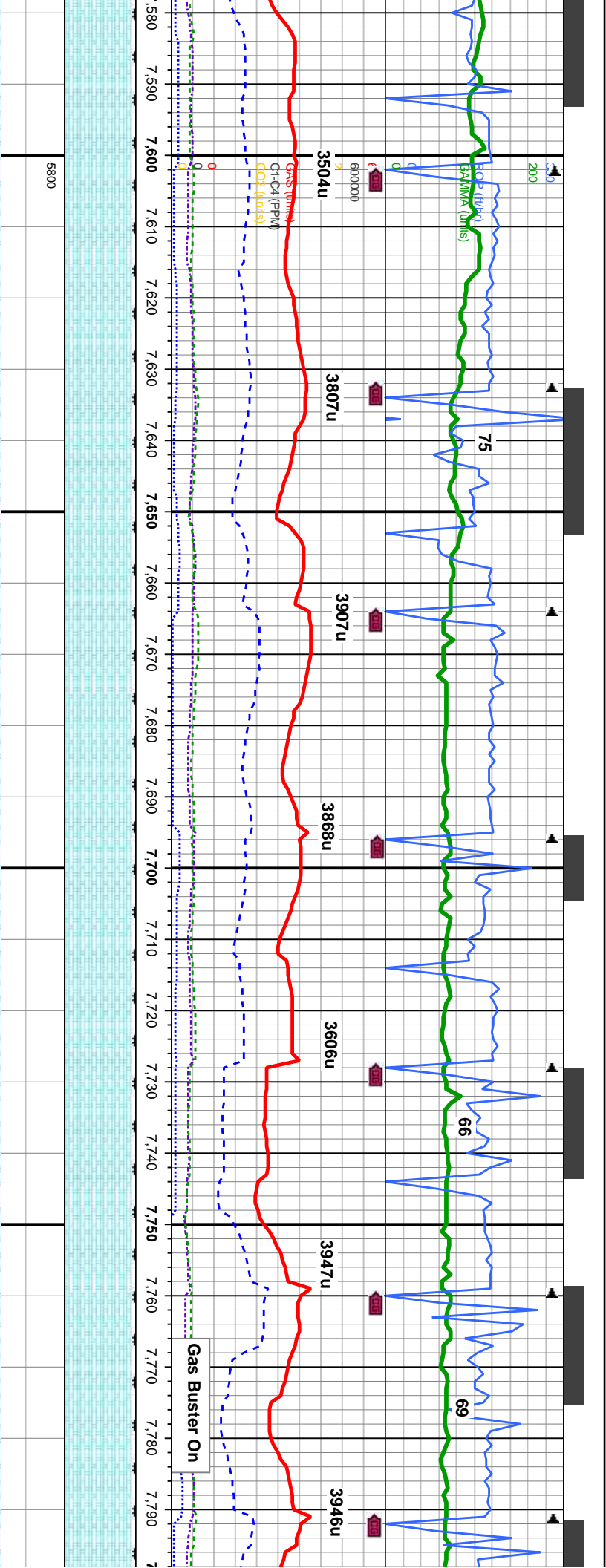
80-90% CHK: lgy-med gy, occ wht-crm, mot, sb blk-y-blky, some sbply, mod sft- sl frm, wxy, mtk; v calc, 20-10%: MRLST: med - dk gy, sb ply - sb blk-y, sl frm - mod hd, arg-sily tex, mtk; calc, abnt lse calc, tr inoc fos, tr bent, fst string cut, frnt lt bl flr, thk yel/wht ring, g stn g odr

95% CHK: lgy-med gy, occ wht-crm, some dk gy, mot, sb blk-y-blky, some sbply, mod sft- sl frm, wxy, mtk; v calc, 5%: MRLST: med - dk gy, sb ply - sb blk-y, sl frm - mod hd, arg-sily tex, mtk; calc, scat lse calc, tr inoc fos, abnt bent, fst string cut, frnt lt bl flr, mod thk yel/wht ring, g stn fr odr

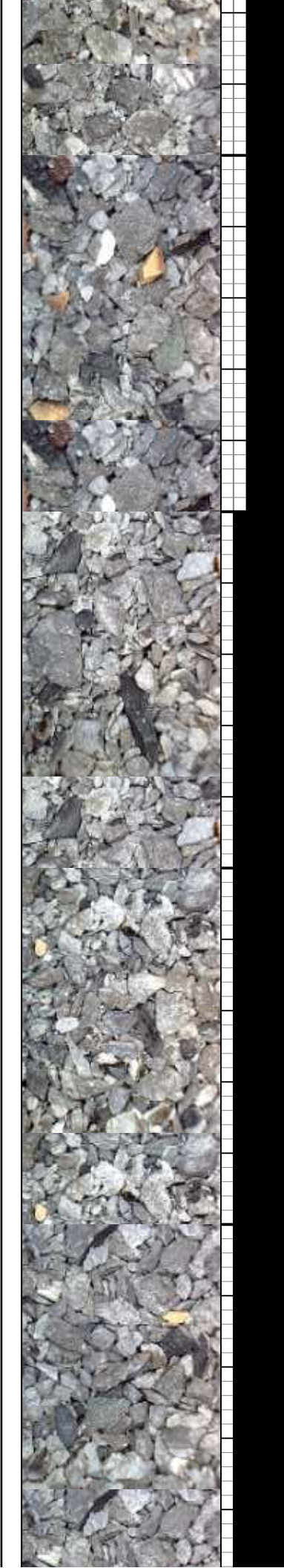
95% CHK: lgy-med gy, sft- sl frm, wxy, mtk; v arg-sily tex, mtk; calc, blshwh mky cut, mo ye

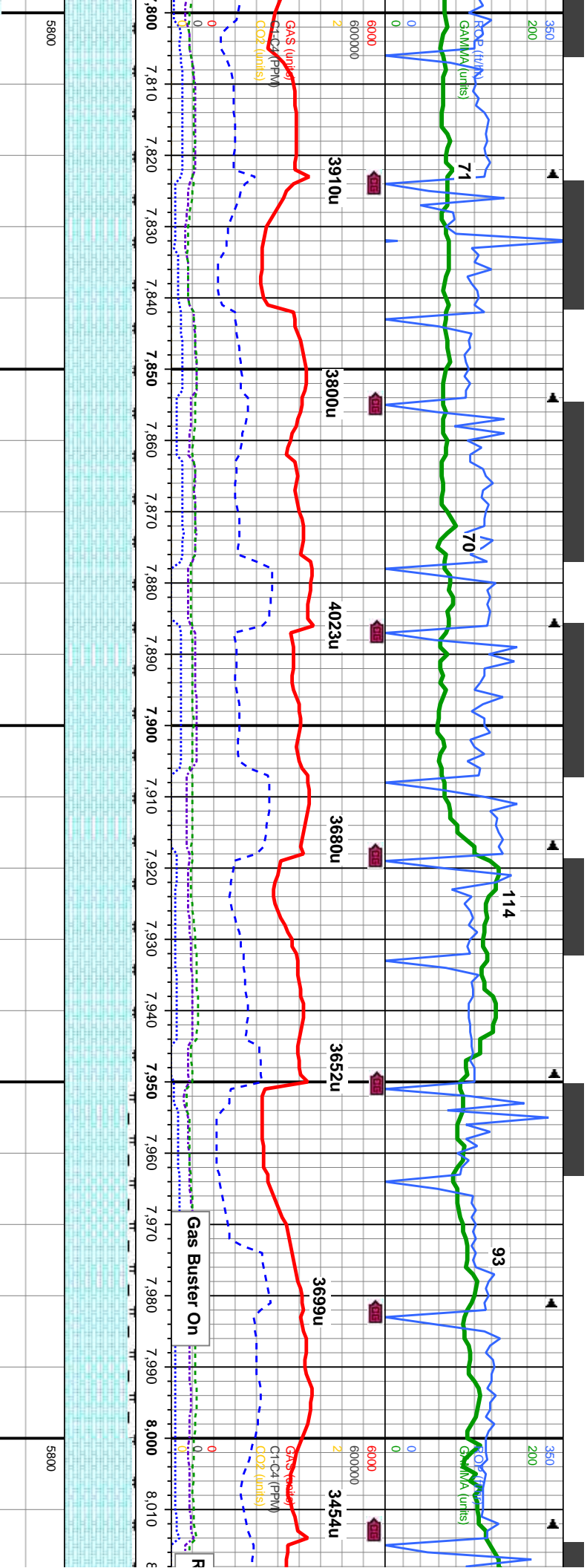






B		B		B		B		B		B	
9' 85.39' n. 88.8° 184.2° 7'	MD: 7,611' TVD: 6,286.14' Inclination: 88.5° Azimuth: 184.3° VS: 1,218.1'	MD: 7,643' TVD: 6,286.81' Inclination: 89.1° Azimuth: 183.6° VS: 1,249.23'	MD: 7,675' TVD: 6,287.12' Inclination: 89.8° Azimuth: 182.9° VS: 1,280.46'	MD: 7,706' TVD: 6,287.12' Inclination: 90.2° Azimuth: 182.2° VS: 1,310.79'	MD: 7,738' TVD: 6,286.87' Inclination: 90.7° Azimuth: 180.6° VS: 1,342.23'	MD: 7,770' TVD: 6,286.42' Inclination: 90.9° Azimuth: 180.3° VS: 1,373.76'	MD: 7,770' TVD: 6,286.42' Inclination: 90.9° Azimuth: 180.3° VS: 1,373.76'				
occ wht-crm, some dk gy, mot, sb blk-y-blky, some sbply, mod calc, 5%: MRLST: med - dk gy, sb ply - sb blk-y, sl frm - mod hd, mod sft - sl frm, wxy, mtz; v calc, 5%: MRLST: med - dk gy, sb ply - sb blk-y, sl frm - mod hd, arg-sltv tex, mtz; calc, tr lse calc, abnt bent, fr odr, mod bishwh stmg, bri		95% CHK: llyg-med gy, occ wht-crm, some dk gy, mot, sb blk-y-blky, some sbply, mod sft - sl frm, wxy, mtz; v calc, 5%: MRLST: med - dk gy, sb ply - sb blk-y, sl frm - mod hd, arg-sltv tex, mtz; calc, tr lse calc, abnt bent, fr odr, v thk stmg cut, bri bl - wh flr, v thk even bri gn		95% CHK: llyg-med gy, occ wht-crm, some dk gy, mot, sb blk-y-blky, some sbply, mod sft - sl frm, wxy, mtz; v calc, 5%: MRLST: med - dk gy, sb ply - sb blk-y, sl frm - mod hd, arg-sltv tex, mtz; calc, tr lse calc, abnt bent, fr odr, v thk stmg cut, bri bl - wh flr, v thk even bri gn		95% CHK: llyg-med gy, occ wht-crm, some dk gy, mot, sb blk-y-blky, some sbply, mod sft - sl frm, wxy, mtz; v calc, 5%: MRLST: med - dk gy, sb ply - sb blk-y, sl frm - mod hd, arg-sltv tex, mtz; calc, tr lse calc, abnt bent, fr odr, v thk stmg cut, bri bl - wh flr, v thk even bri gn					
il resdl ring, no flr											
8000											



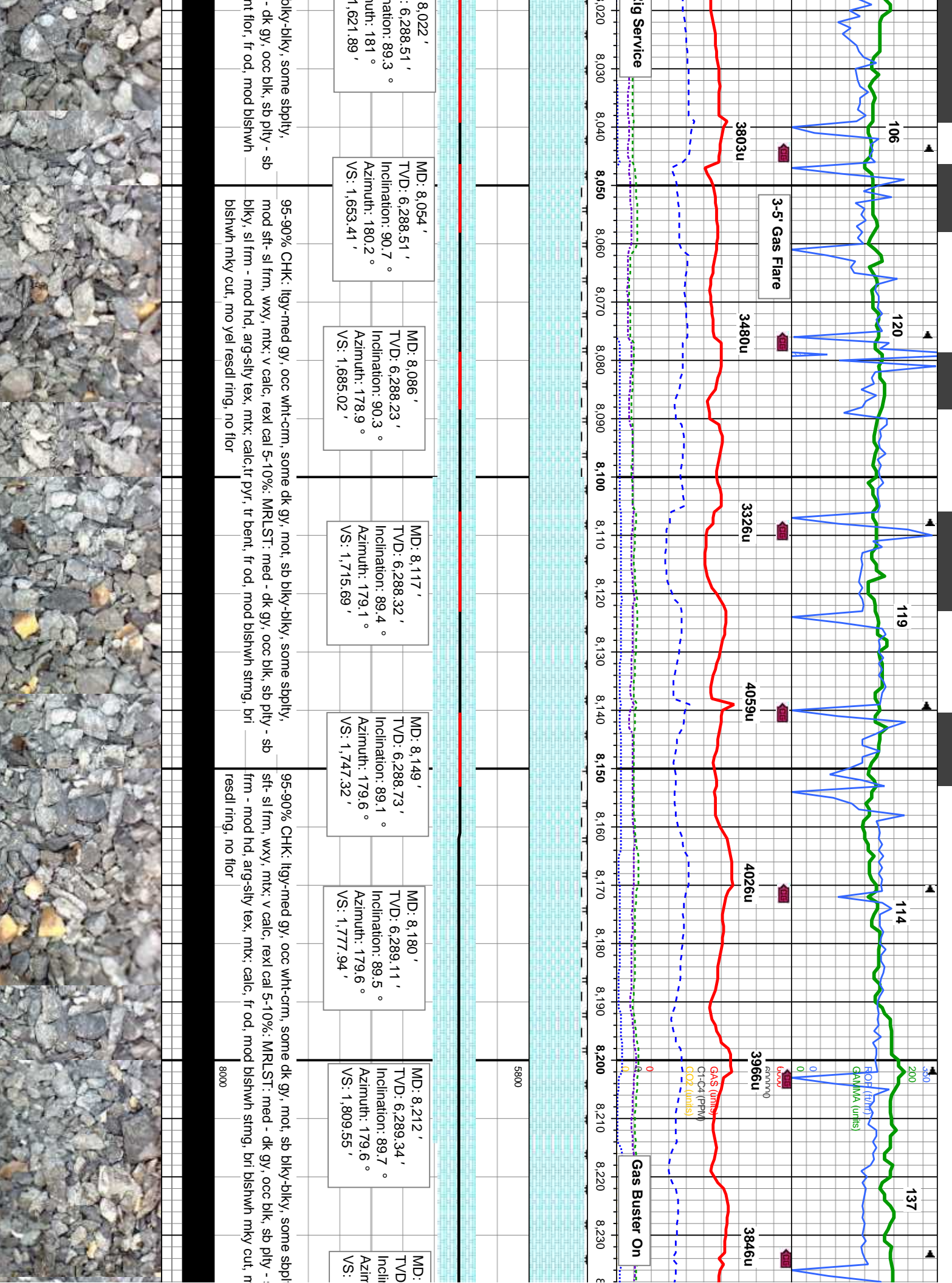


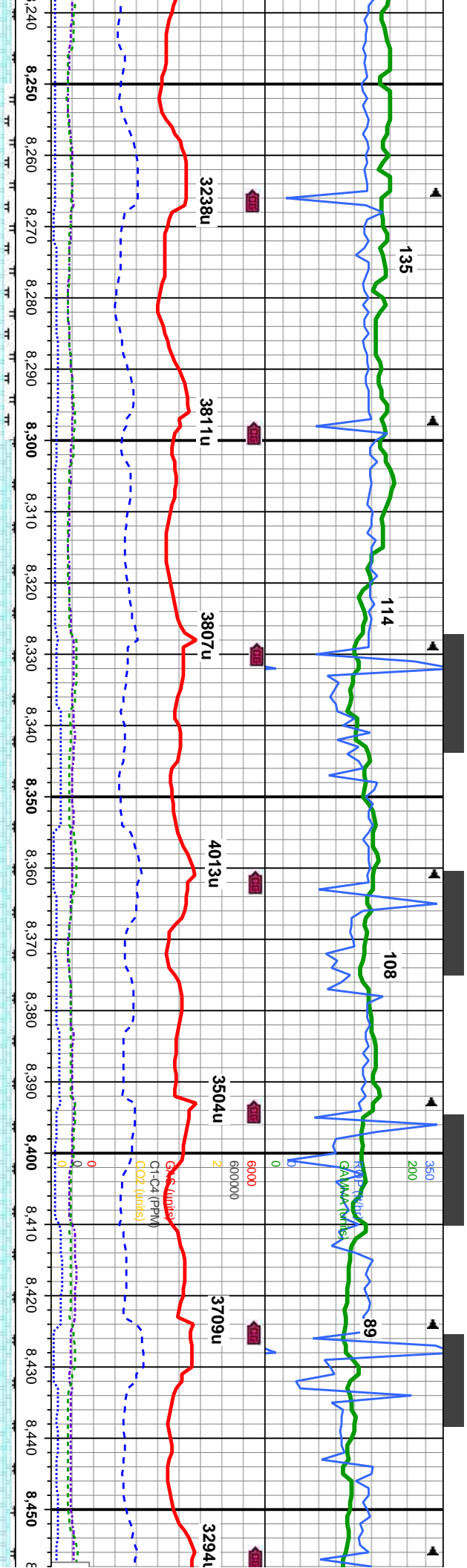
MD: 7.833 ' TVD: 6,285.57 ' Inclination: 90.4 ° Azimuth: 179.4 ° VS: 1,435.92 '	MD: 7.864 ' TVD: 6,285 ' Inclination: 90 ° Azimuth: 179.2 ° VS: 1,467 '	MD: 7.896 ' TVD: 6,285.62 ' Inclination: 89.5 ° Azimuth: 179.9 ° VS: 1,498.15 '	MD: 7.928 ' TVD: 6,286.16 ' Inclination: 88.5 ° Azimuth: 181 ° VS: 1,529.71 '	MD: 7.959 ' TVD: 6,287.02 ' Inclination: 88.3 ° Azimuth: 181.9 ° VS: 1,560.15 '	MD: 7.991 ' TVD: 6,287.92 ' Inclination: 88.5 ° Azimuth: 182.6 ° VS: 1,591.48 '
---	---	---	---	---	---

ok gy, mot, sb blkly-blky, some sbply, mod  
LST: med - dk gy, occ blk, sb ply - sb blkly, sl  
calc, tr bent, frt flr, fr odr, v fast string cut, bri  
95-90% CHK: lgy-med gy, occ wht-crm, some dk gy, mot, sb blkly-blky, some sbply, mod  
sft-sl frm, wxy, mtx; v calc, rex cal 5-10%: MRLST: med - dk gy, occ blk, sb ply - sb blkly, sl  
frm - mod hd, arg-sily tex, mtx: calc, tr bent, frt flr, fr odr, mod blshwh string, bri blshwh  
mky cut, mo yel resdl ring, no flr









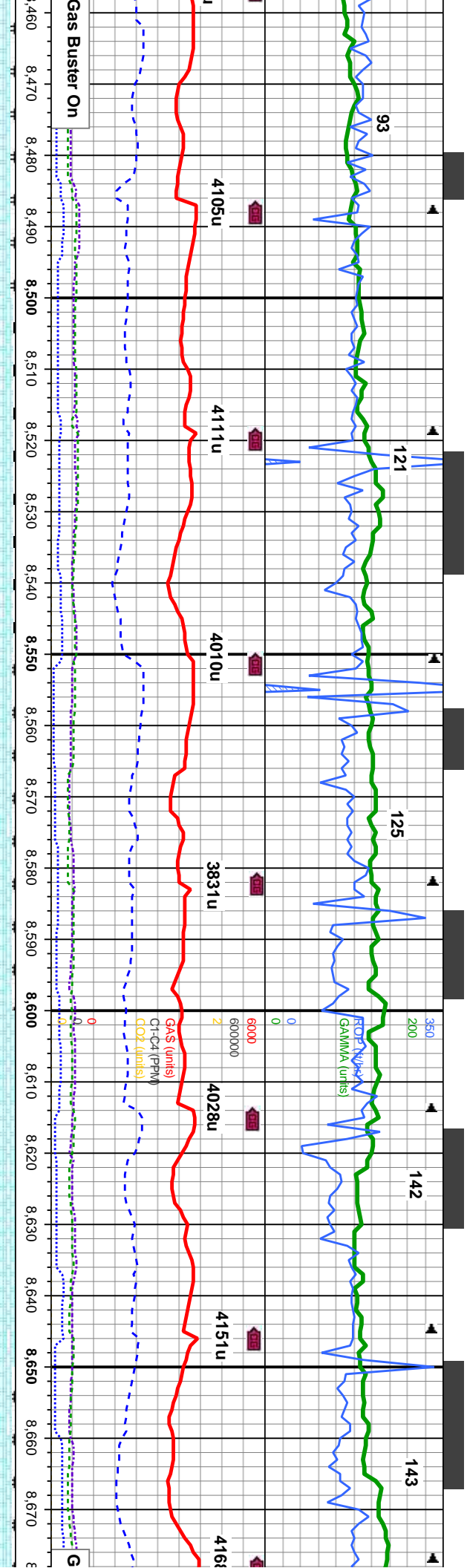
8,244'	MD: 8,276'	MD: 8,308'	MD: 8,340'	MD: 8,371'	MD: 8,403'	MD: 8,434'
6,289.39'	TVD: 6,289.17'	TVD: 6,288.64'	TVD: 6,288.02'	TVD: 6,287.56'	TVD: 6,287.31'	TVD: 6,287.37'
Inclination: 90.1°	Inclination: 91.2°	Inclination: 91.2°	Inclination: 91°	Inclination: 90.7°	Inclination: 90.2°	Inclination: 89.6°
Azimuth: 180.3°	Azimuth: 180.8°	Azimuth: 180.5°	Azimuth: 180.5°	Azimuth: 180.5°	Azimuth: 180.3°	Azimuth: 180.1°
VS: 1,841.13'	VS: 1,872.67'	VS: 1,904.18'	VS: 1,935.68'	VS: 1,966.22'	VS: 1,997.76'	VS: 2,028.33'

86-95% CHK: lgy-med gy, occ wht-brn, some dk gy, mot, sb blk-bkly, occ sb  
ply, mod sft-si frm, wxy, mt; v calc, tr bent, rex cal 16-5%; MRLST: med - dk gy,  
occ blk, sb ply - sb blk, si frm - mod hd, arg-sily tex, mt; calc, fr od, mod blshwh  
stmg, bri blshwh mky cut, fr yel-amb resd ring, no flr

95% CHK: lgy-med gy, occ wht-crm, some dk gy, mot, sb blk-bkly, occ sb ply, mod  
sft-si frm, wxy, mt; v calc, tr bent, rex cal 5%; MRLST: med - dk gy, occ blk, sb ply -  
sb blk, si frm - mod hd, arg-sily tex, mt; calc, fr od, mod mky cut, bl - gn flr, mod  
even yel/omg ring, tr stn





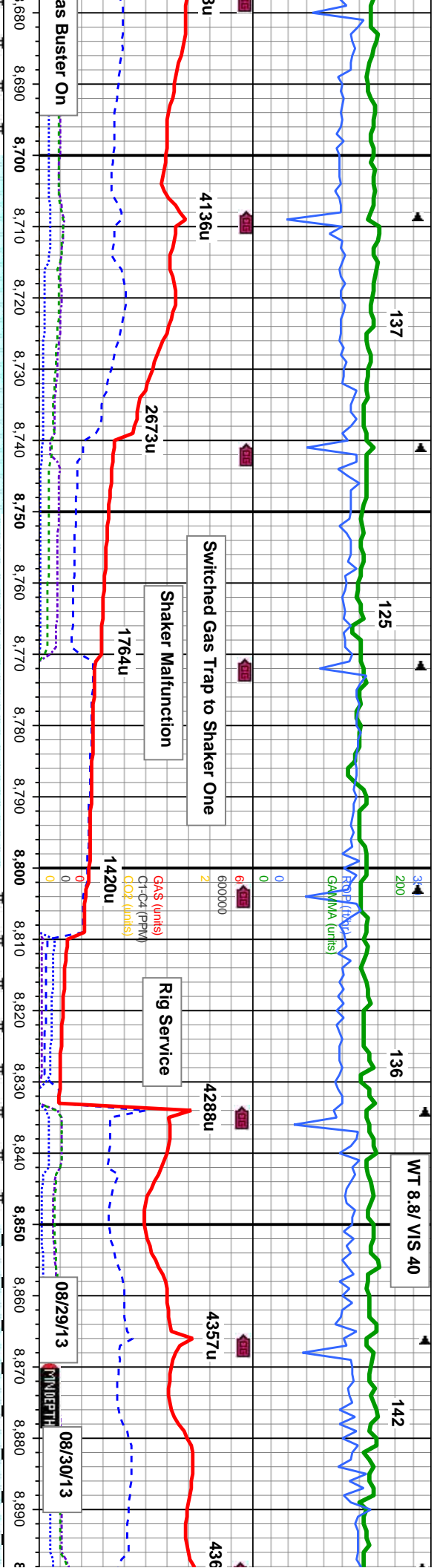


D: 8,466 ' TV/D: 6,287.51 ' Inclination: 89.9 ° Azimuth: 180.1 ° VS: 2,059.9 '	D: 8,497 ' TV/D: 6,287.34 ' Inclination: 90.7 ° Azimuth: 180.3 ° VS: 2,090.47 '	D: 8,529 ' TV/D: 6,287.01 ' Inclination: 90.5 ° Azimuth: 180.8 ° VS: 2,121.99 '	D: 8,560 ' TV/D: 6,286.85 ' Inclination: 90.1 ° Azimuth: 181 ° VS: 2,152.49 '	D: 8,592 ' TV/D: 6,286.85 ' Inclination: 89.9 ° Azimuth: 181.2 ° VS: 2,183.96 '	D: 8,624 ' TV/D: 6,287.15 ' Inclination: 89 ° Azimuth: 181.7 ° VS: 2,215.39 '	D: 8,655 ' TV/D: 6,287.78 ' Inclination: 88.7 ° Azimuth: 181.7 ° VS: 2,245.81 '
--	---	---	---	---	---	---

% CHK: lgy-med gy, occ wht-crm, some dk gy, mot, sb blk-y-biky, occ sb ply, mod  
- frm, wxy, mtz; v calc, rex cal 3-7%; MRLST: med - dk gy, occ blk, sb ply - sb biky,  
- mod hd, arg-sily tex, mtz; calc, g od, mod bishwh stmg, bri bishwh mky cut, mo  
nd resdl ring, no flor

100% CHK: lgy-med gy, occ wht-crm, some dk gy, mot, sb blk-y-biky, occ sb ply, mod  
sft- sl frm, wxy, mtz; v calc, rex cal, g od, tr mlst, tr bent, fast bishwh stmg, bri bishwh  
mky cut, mo yel resdl ring, no flor





MD: 8.687 ' TVD: 6,288.56 ' Inclination: 88.5 ° Azimuth: 181.7 ° VS: 2,277.21 '	MD: 8.718 ' TVD: 6,289.29 ' Inclination: 88.8 ° Azimuth: 181.9 ° VS: 2,307.62 '	MD: 8.750 ' TVD: 6,289.93 ' Inclination: 88.9 ° Azimuth: 181.3 ° VS: 2,339.03 '	MD: 8.781 ' TVD: 6,290.42 ' Inclination: 89.3 ° Azimuth: 181.7 ° VS: 2,369.47 '	MD: 8.813 ' TVD: 6,290.89 ' Inclination: 89 ° Azimuth: 181 ° VS: 2,400.91 '	MD: 8.845 ' TVD: 6,291.37 ' Inclination: 89.3 ° Azimuth: 180.8 ° VS: 2,432.39 '	MD: 8.876 ' TVD: 6,291.69 ' Inclination: 89.5 ° Azimuth: 181 ° VS: 2,462.9 '
---	---	---	---	---	---	--

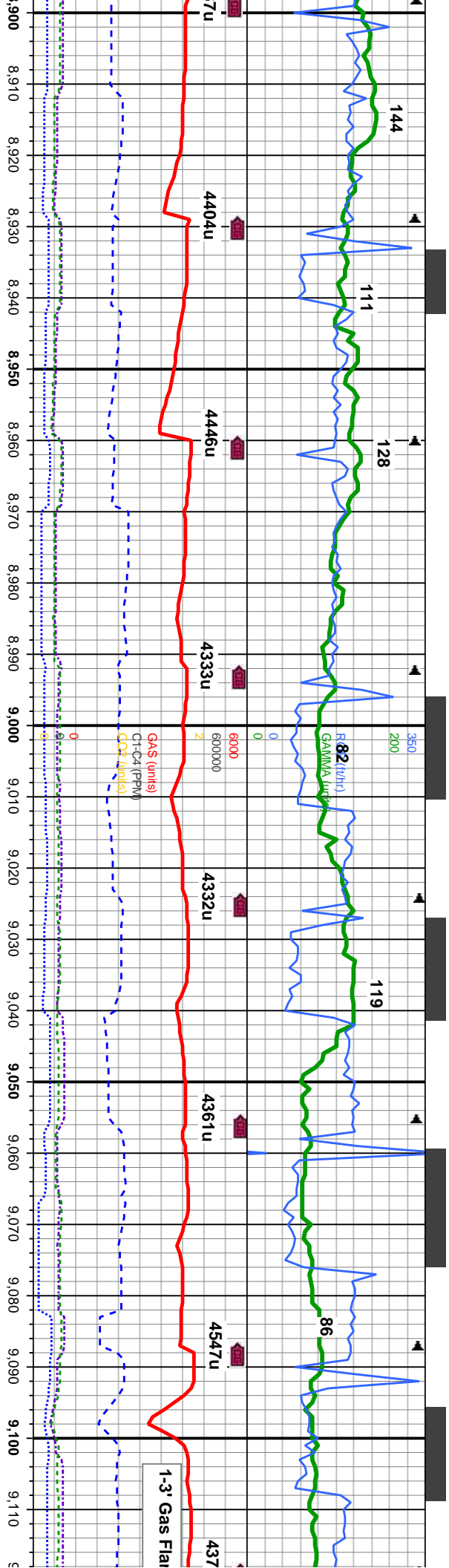
gy, occ wht-crm, some dk gy, mot, sb blk-y-blky, occ sb pty, mod c;rexl cal, mod-abnt bent 5%; MRLST: med - dk gy, occ blk, sb pty arg-sily tex, mt; calc, wk od, fast blshwh stmg, brt blshwh mky

100-95% CHK: lt gy-med gy, occ wht-crm, some dk gy, mot, sb blk-y-blky, occ sb pty, mod sft- sl frm, wxy, mt; v calc,rexl cal, 0-5%: MRLST: med - dk gy, occ blk, sb pty - sb blk-y, sl frm - mod hd, arg-sily tex, mt; calc,tr bent, tr pyr, tr inoc fos frags wk od, fast stmg, mod wht-bl cut,mod even yel-wht ring, fnt str

95-100% CHK: lt gy-med gy, occ wht-crm, some dk gy, mot, sb blk-y-blky, occ sb pty, mod sft- sl frm, wxy, mt; v calc,rexl cal, 0-5%: MRLST: med - dk gy, occ blk, sb pty - sb blk-y, sl frm - mod hd, arg-sily tex, mt; calc,tr bent, tr pyr, tr inoc frags, fr od, fast stmg, mod wht-bl cut

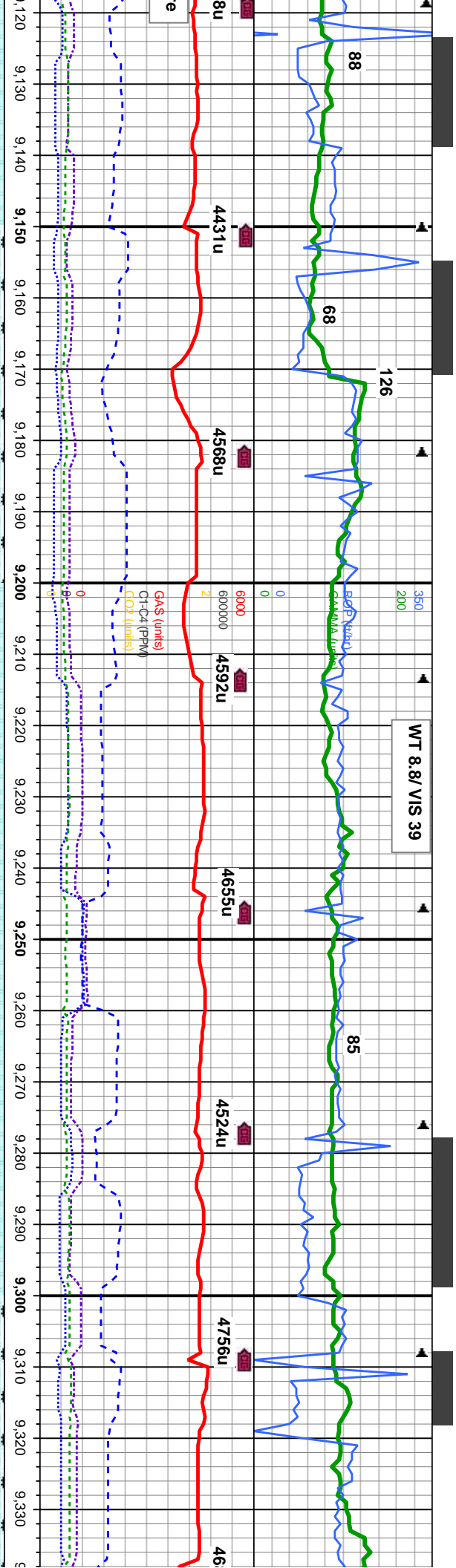






D: 8.907 ' MD: 8.939 ' TVD: 6,291.41 ' Inclination: 91.3 ° Azimuth: 181.7 ° VS: 2.524.8 ' VS: 2.493.38 ' 100% CHK: It gy-med gy, occ wht-crm, some dk gy, mot, sb blk-y-blky, occ sb pty, mod sft- sl frm, wxy, mtx: v calc,rexl cal,v calc,tr bent, tr inoc fos frnt tr yel-wht ring, uneven strn	D: 9.002 ' MD: 9.034 ' TVD: 6,288.27 ' Inclination: 92.1 ° Azimuth: 181.5 ° VS: 2.586.61 ' VS: 2.618.07 ' 100% CHK: It gy-med gy, occ wht-crm, some dk gy, mot, sb blk-y-blky, occ sb pty, mod sft- sl frm, wxy, mtx: v calc,rexl cal,v calc,tr bent, tr inoc fos frnt tr yel-wht ring, uneven strn	D: 9.065 ' MD: 9.097 ' TVD: 6,287.34 ' Inclination: 91.5 ° Azimuth: 180.5 ° VS: 2.648.6 ' VS: 2.680.13 ' 100% CHK: It gy-med gy, occ wht-crm, some dk gy, mot, sb blk-y-blky, occ sb pty, mod sft- sl frm, wxy, mtx: v calc,rexl cal,v calc, mod-fast strng, mod wht-bl cut, frnt tr yel-wht ring, fr
--	---	---





WT 8.8/ VIS 39

5800

MD: 9,128 '  
TVD: 6,286.48 '  
Inclination: 90 °  
Azimuth: 179.9 °  
VS: 2,710.71 '

MD: 9,160 '  
TVD: 6,286.71 '  
Inclination: 89.2 °  
Azimuth: 179.9 °  
VS: 2,742.29 '

MD: 9,192 '  
TVD: 6,287.15 '  
Inclination: 89.2 °  
Azimuth: 180.1 °  
VS: 2,773.87 '  
VD (ft)

MD: 9,223 '  
TVD: 6,287.37 '  
Inclination: 90 °  
Azimuth: 179.9 °  
VS: 2,804.45 '

MD: 9,255 '  
TVD: 6,287.2 '  
Inclination: 90.6 °  
Azimuth: 180.3 °  
VS: 2,836.02 '

MD: 9,287 '  
TVD: 6,286.92 '  
Inclination: 90.4 °  
Azimuth: 180.5 °  
VS: 2,867.56 '

MD: 9,318 '  
TVD: 6,287 '  
Inclination: 89.3 °  
Azimuth: 180.5 °  
VS: 2,898.1 '

95-100% CHK: lt gy-med gy, occ wht-crm, some dk gy & lt brn, mot, sb blk-ly-bkly, occ sb pily, mod sft-si frm, wxy, mtx: v calc, rexl cal, 5-0%: MRLST: med - dk gy, occ blk, sb pily - sb blkly, si frm - mod hd, arg-sily tex, mtx: calc, tr bent, mod abnt inoc fos frags, frt od, mod-fast stmg, mod wht-bl cut, mod thn yel-wht ring, dull even sin

95-100% CHK: lt gy-med gy, occ wht-crm, some dk gy & lt brn, mot, sb blk-ly-bkly, occ sb pily, mod sft-si frm, wxy, mtx: v calc, rexl cal, 5-0%: MRLST: med - dk gy, occ blk, sb pily - sb blkly, si frm - mod hd, arg-sily tex, mtx: calc, tr bent, mod abnt inoc fos frags, frt od, mod-fast stmg, mod wht-bl cut, mod thn yel-wht ring, dull even sin

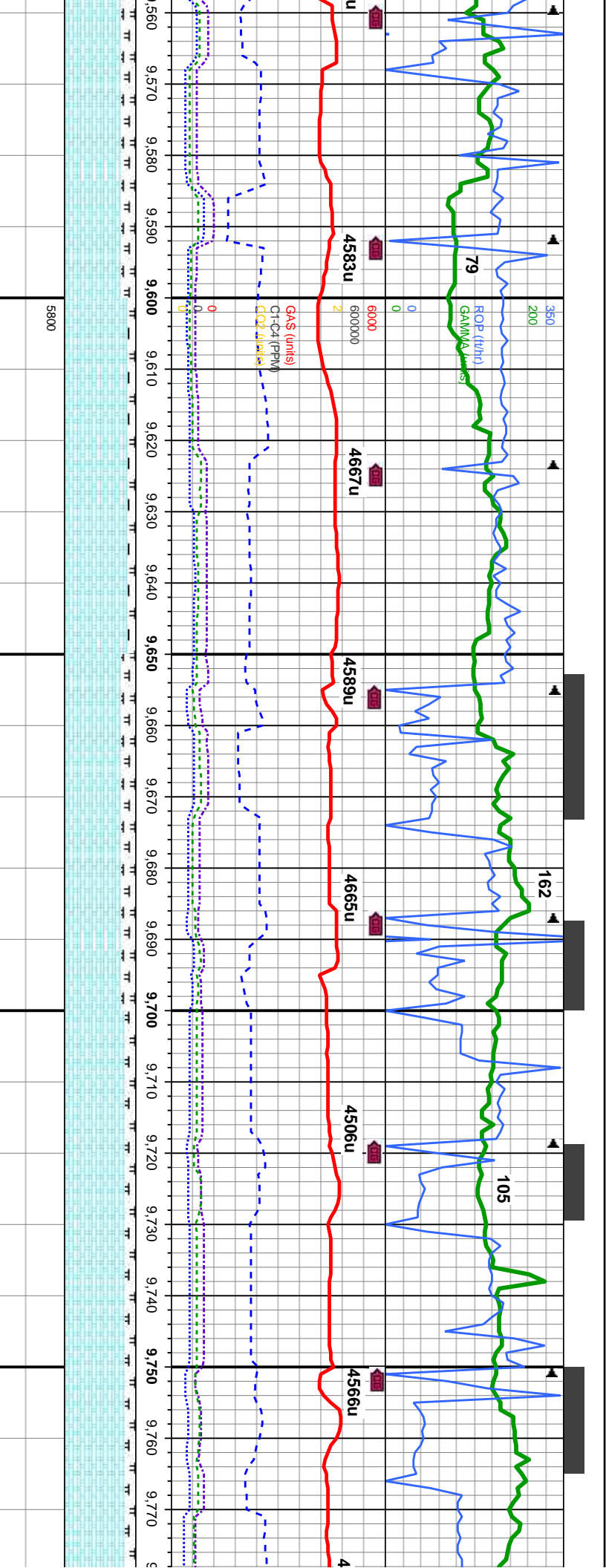
100-95% CHK: lt gy-med gy, occ wht-crm, some dk gy & lt brn, mot, sb blk-ly-bkly, occ sb pily, mod sft-si frm, wxy, mtx: v calc, rexl cal, 0-5%: MRLST: dk gy - b pily - sb blkly, si frm - mod hd, arg-sily tex, mtx: calc, scat sec calc, tr bent, sc inoc fos frags, fr od, fast stmg, mod wht-bl cut, mod thn yel-wht ring, frt even sin











MD: 9,570 '  
TVD: 6,290.88 '  
Inclination: 90 °  
Azimuth: 182 °  
VS: 3,145.92 '

MD: 9,602 '  
TVD: 6,290.74 '  
Inclination: 90.5 °  
Azimuth: 182.2 °  
VS: 3,177.28 '

MD: 9,634 '  
TVD: 6,290.37 '  
Inclination: 90.8 °  
Azimuth: 182.2 °  
VS: 3,208.63 '

MD: 9,665 '  
TVD: 6,290.05 '  
Inclination: 90.4 °  
Azimuth: 182.4 °  
VS: 3,238.99 '

MD: 9,697 '  
TVD: 6,289.71 '  
Inclination: 90.8 °  
Azimuth: 181.2 °  
VS: 3,270.38 '

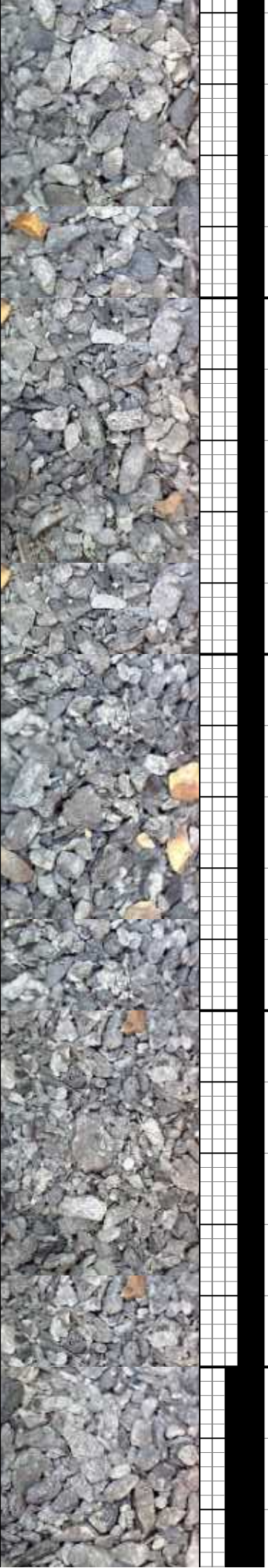
MD: 9,729 '  
TVD: 6,289.21 '  
Inclination: 91 °  
Azimuth: 180.8 °  
VS: 3,301.86 '

MD: 9,761 '  
TVD: 6,288.6 '  
Inclination: 91.2 °  
Azimuth: 180.6 °  
VS: 3,333.36 '

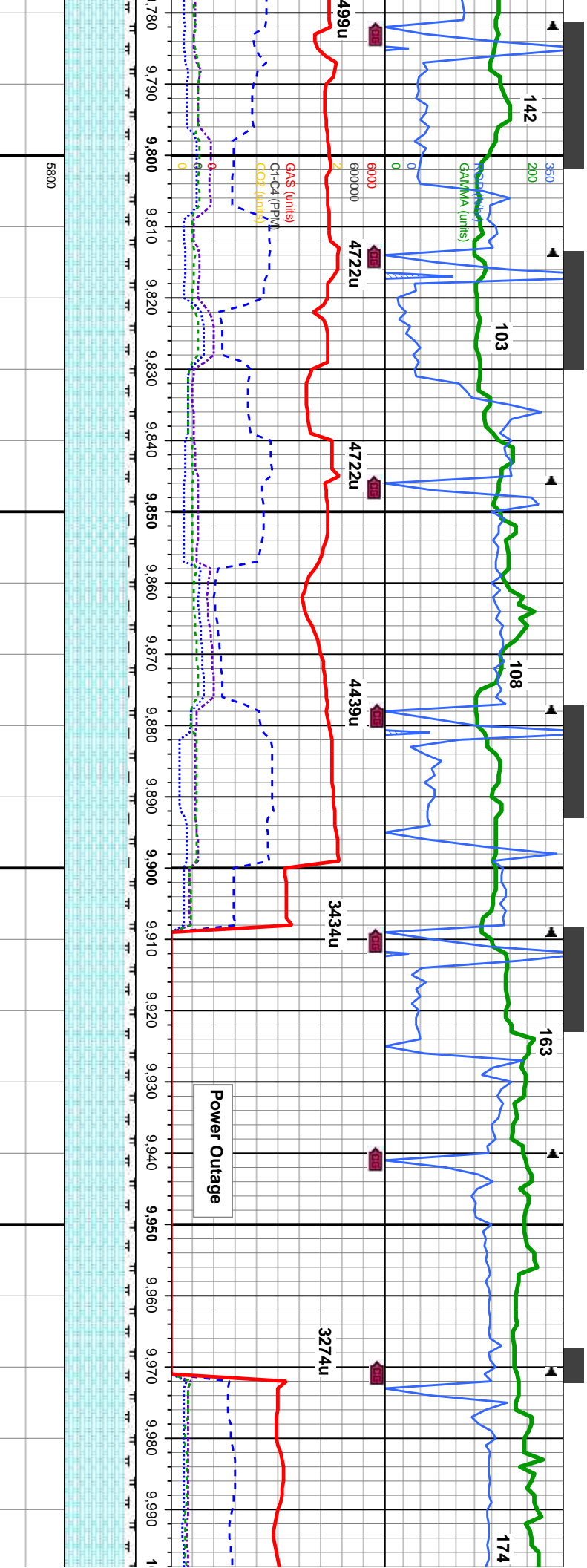
0-90% CHK: lt gy-med gy, occ wht-cm, some dk gy & lt brn, mot, sb blk-y-blky, occ sb pty, mod sft-si frm, wxy, mix, v calc, rexl cal, 20-10%: MRLST: dk gy - blk, p pty - sb blk-y, sl frm - mod hd, arg-silty tex, mix, calc, abnt sec calc, tr bent, some inoc fos frags, g od, fast stmg, mod wht-bl cut, fnt tr yel-wht ring, dull eleven stn

80-85% CHK: med gy, occ lt gy, some dk gy & lt brn, mot, sb blk-y-blky, occ sb pty, mod sft-si frm, wxy, mix, v calc, rexl cal, 20-15%: MRLST: dk gy - blk, sb pty - sb blk-y, sl frm - mod hd, arg-silty tex, mix, calc, occ sec calc, tr bent, tr inoc fos frags, g od, fast stmg, mod wht-bl cut, fnt tr yel-wht ring, no sin

80% CHK: lt-med pty, mod sft-si frm - sb blk-y, sl frm - n fos frags, g od, mc







MD: 9,792 '  
TVD: 6,288.08 '  
Inclination: 90.7 °  
Azimuth: 179.6 °  
VS: 3,363.93 '  
D (ft)

MD: 9,826 '  
TVD: 6,287.98 '  
Inclination: 89.9 °  
Azimuth: 179.1 °  
VS: 3,396.53 '

MD: 9,856 '  
TVD: 6,287.88 '  
Inclination: 90.2 °  
Azimuth: 179.1 °  
VS: 3,427.22 '

MD: 9,887 '  
TVD: 6,287.88 '  
Inclination: 89.8 °  
Azimuth: 179.8 °  
VS: 3,457.85 '

MD: 9,918 '  
TVD: 6,288.21 '  
Inclination: 89 °  
Azimuth: 179.9 °  
VS: 3,488.45 '

MD: 9,950 '  
TVD: 6,288.77 '  
Inclination: 89 °  
Azimuth: 180.5 °  
VS: 3,520 '

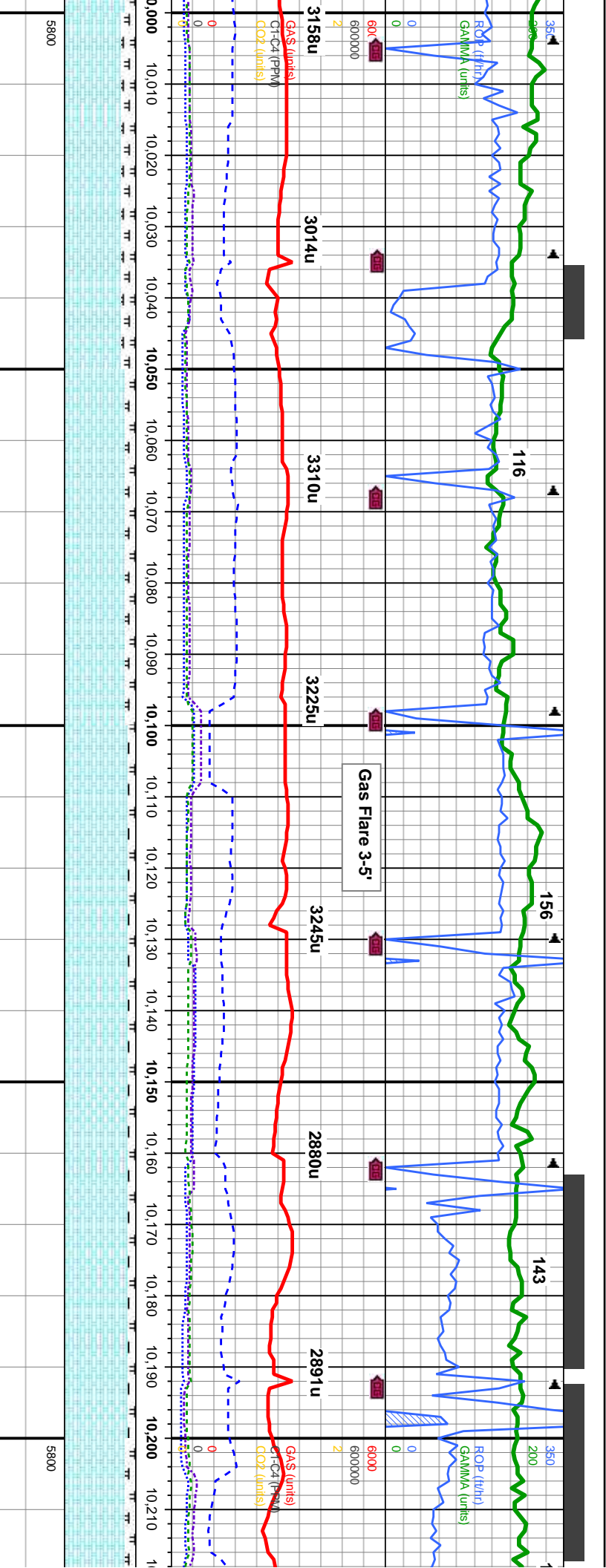
MD: 9,981 '  
TVD: 6,289.09 '  
Inclination: 89.8 °  
Azimuth: 180.6 °  
VS: 3,550.54 '

85-90% CHK: lt-med gy, some dk gy & lt brn, mot, sb blk-y-biky, occ sb ply, mod sft- sl frm, wxy, mty; v calc, rex cal, 15-10%: MRLST: dk gy - blk, sb ply - mod hd, arg-sily tex, mty; calc, occ sec calc, tr bent, tr inoc mod strng, mod wht-bl cut, dull tr yel-wht ring, dull even stn

85-80% CHK: med gy, occ lt gy, some dk sft- sl frm, wxy, mty; v calc, rex cal, 15-20 mod hd, arg-sily tex, mty; calc, occ sec ca mod uneven yel-wht ring, dull even stn



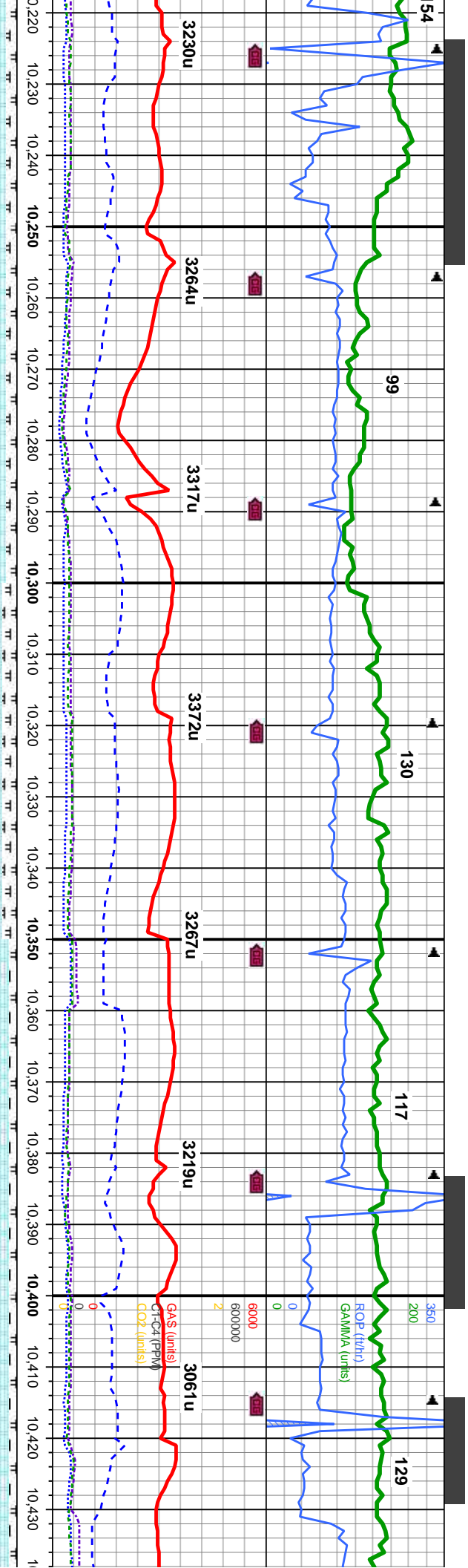




MD: 10,013 ' TVD: 6,289.29 ' Inclination: 89.5 ° Azimuth: 180.5 ° VS: 3,582.06 '	MD: 10,045 ' TVD: 6,289.62 ' Inclination: 89.3 ° Azimuth: 181 ° VS: 3,613.57 '	MD: 10,077 ' TVD: 6,289.68 ' Inclination: 90.5 ° Azimuth: 181.5 ° VS: 3,645.02 '	MD: 10,108 ' TVD: 6,289.16 ' Inclination: 91.4 ° Azimuth: 181.5 ° VS: 3,675.46 '	MD: 10,140 ' TVD: 6,288.21 ' Inclination: 92 ° Azimuth: 181.9 ° VS: 3,706.85 '	MD: 10,171 ' TVD: 6,287.24 ' Inclination: 91.6 ° Azimuth: 182.2 ° VS: 3,737.23 '	MD: 10,203 ' TVD: 6,286.93 ' Inclination: 89.5 ° Azimuth: 182.4 ° VS: 3,768.56 '
gy & lt brn, mot, sb blk-y-biky, occ sb pty, mod %: MRLST: dk gy - blk, sb pty - sb biky, sl frm - blk, tr bent, fr od, fast stmg, mod wht-bl cut,						
85-% CHK: med gy, occ lt gy, some dk gy & lt brn, mot, some sfrs sb blk-y-biky, occ sb pty, mod sft- sl frm, wxy, mtx, v calc, rex cal, 15%: MRLST: dk gy - blk, sb pty - sb biky, sl frm - mod hd, arg-sily tex, mtx; calc, tr pyr, occ sec cal, fr od, fast stmg, mod wht-bl cut, mod uneven yel-wht ring, dull even stn						
85-90% CHK: med gy, occ lt gy, some dk gy & lt brn, mot, some pty, mod sft- sl frm, wxy, mtx, v calc 15-10%: MRLST: dk gy mod hd, arg-sily tex, mtx; calc, fr od, fast stmg, mod wht-bl cut, dull even stn						







MD: 10,235 '  
TVD: 6,287.49 '  
Inclination: 88.5 °  
Azimuth: 182.7 °  
VS: 3,799.87 '

MD: 10,267 '  
TVD: 6,288.27 '  
Inclination: 88.7 °  
Azimuth: 182.6 °  
VS: 3,831.16 '

MD: 10,299 '  
TVD: 6,288.83 '  
Inclination: 89.3 °  
Azimuth: 182.4 °  
VS: 3,862.47 '

MD: 10,330 '  
TVD: 6,289.05 '  
Inclination: 89.9 °  
Azimuth: 182.2 °  
VS: 3,892.84 '

MD: 10,362 '  
TVD: 6,288.88 '  
Inclination: 90.7 °  
Azimuth: 182.7 °  
VS: 3,924.16 '

MD: 10,394 '  
TVD: 6,288.43 '  
Inclination: 90.9 °  
Azimuth: 181.9 °  
VS: 3,955.5 '

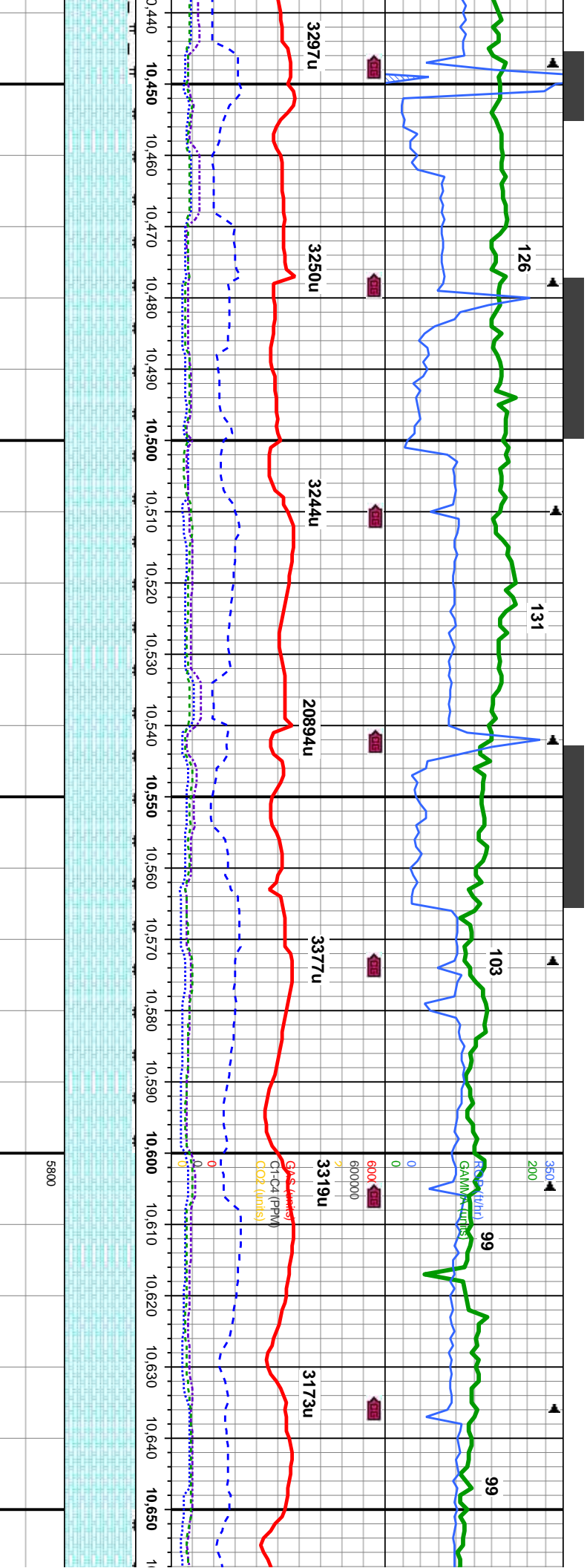
MD: 10,425 '  
TVD: 6,288.03 '  
Inclination: 90.6 °  
Azimuth: 180.8 °  
VS: 3,985.95 '

some strcs sb blkly-blky, occ sb blk - blk, sb ply - sb blkly, sl frm - it: mod uneven yel-wht ring, 85-80% CHK: lt-med gy, occ lt gy, some dk gy & lt brn, mot, sb blkly-blky, occ sb ply, mod sft- sl frm, wxy, mtx; v calc, imbd rex cal, 15-20%: MRLST: dk gy - blk, sb ply - sb blkly, sl frm - mod hd, arg-sily tex, mtx; calc, calc, tr pyr, f od, fast string-milky, mod wht-bl cut, mod even yel-wht ring, dull even 90-% CHK: lt-med gy, occ lt gy, some dk gy & lt brn, mot, sb blkly-blky, occ sb ply, mod sft- sl frm, wxy, mtx; v calc, imbd rex cal, 10-%: MRLST: dk gy - blk, sb ply - sb blk frm - mod hd, arg-sily tex, occ bnnd, mtx; calc, calc, tr pyr, f od, fast string-milky, r wht-bl cut, mod even yel-wht ring, dull even

8000

5800





MD: 10,456 '  
TVD: 6,287.84 '  
Inclination: 90.1 °  
Azimuth: 180.6 °  
VS: 4.016.48 '

MD: 10,488 '  
TVD: 6,287.84 '  
Inclination: 89.9 °  
Azimuth: 179.6 °  
VS: 4.048.04 '

MD: 10,520 '  
TVD: 6,287.92 '  
Inclination: 89.8 °  
Azimuth: 178.9 °  
VS: 4.079.68 '

MD: 10,552 '  
TVD: 6,288.09 '  
Inclination: 89.6 °  
Azimuth: 178.5 °  
VS: 4.111.37 '

MD: 10,583 '  
TVD: 6,288.5 '  
Inclination: 88.9 °  
Azimuth: 177.8 °  
VS: 4.142.1 '

MD: 10,615 '  
TVD: 6,288.92 '  
Inclination: 89.6 °  
Azimuth: 178 °  
VS: 4.173.84 '

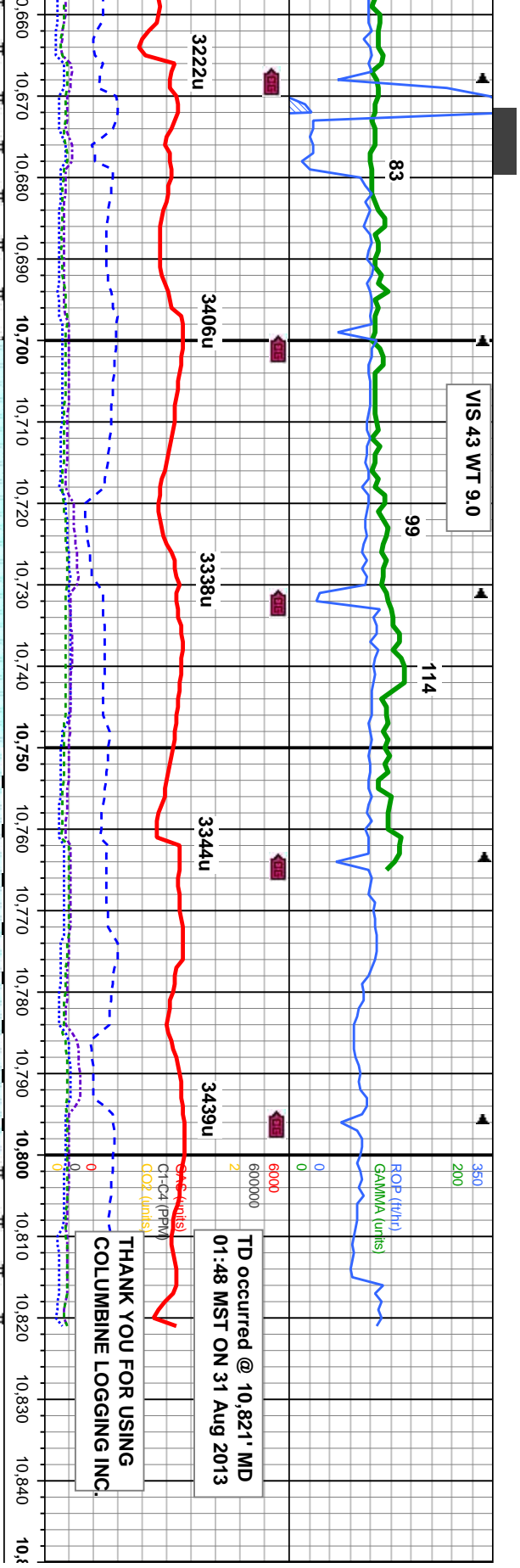
MD: 10,646 '  
TVD: 6,289 '  
Inclination: 90.1 °  
Azimuth: 178 °  
VS: 4.204.58 '

97-% CHK: med gy, occ lt gy, some dk gy & lt brn, mot, sb blk-y-biky, occ sb ply, mod sft-  
sl frm, wxy, mtk; v calc, rexl cal, 3-%: MRLST: dk gy - blk, sb ply - sb biky, sl frm - mod hd,  
arg-sily tex, mtk; calc, occ sec calc, tr inoc fos frags, frt flr, fr odr, v fast stmg cut, bri bl -  
wh flr, v thk even bri yel-gn

97-100% CHK: lt gy-med gy, occ dk gy & lt brn, mot, sb blk-y-biky, occ sb ply, mod sft- sl  
frm, wxy, mtk; v calc, rexl cal, 3-0%: MRLST: dk gy - blk, sb ply - sb biky, sl frm - mod hd,  
arg-sily tex, mtk; calc, occ sec calc, tr bent, tr inoc fos frags, fr odr, frt flr, v fast stmg cut, bri  
bl - wh flr, v thk even bri yel-gn







--	--	--	--	--	--	--	--	--	--	--	--	--	--	--	--	--	--	--	--	--	--	--	--	--	--	--	--	--	--	--	--	--	--	--	--	--	--	--	--	--	--	--	--	--	--	--	--	--	--	--	--	--	--	--	--	--	--	--	--	--	--	--	--	--	--	--	--	--	--	--	--	--	--	--	--	--	--	--	--	--	--	--	--	--	--	--	--	--	--	--	--	--	--	--	--	--	--	--	--	--	--	--	--	--	--	--	--	--	--	--	--	--	--	--	--	--	--	--	--	--	--	--	--	--	--	--	--	--	--	--	--	--	--	--	--	--	--	--	--	--	--	--	--	--	--	--	--	--	--	--	--	--	--	--	--	--	--	--	--	--	--	--	--	--	--	--	--	--	--	--	--	--	--	--	--	--	--	--	--	--	--	--	--	--	--	--	--	--	--	--	--	--	--	--	--	--	--	--	--	--	--	--	--	--	--	--	--	--	--	--	--	--	--	--	--	--	--	--	--	--	--	--	--	--	--	--	--	--	--	--	--	--	--	--	--	--	--	--	--	--	--	--	--	--	--	--	--	--	--	--	--	--	--	--	--	--	--	--	--	--	--	--	--	--	--	--	--	--	--	--	--	--	--	--	--	--	--	--	--	--	--	--	--	--	--	--	--	--	--	--	--	--	--	--	--	--	--	--	--	--	--	--	--	--	--	--	--	--	--	--	--	--	--	--	--	--	--	--	--	--	--	--	--	--	--	--	--	--	--	--	--	--	--	--	--	--	--	--	--	--	--	--	--	--	--	--	--	--	--	--	--	--	--	--	--	--	--	--	--	--	--	--	--	--	--	--	--	--	--	--	--	--	--	--	--	--	--	--	--	--	--	--	--	--	--	--	--	--	--	--	--	--	--	--	--	--	--	--	--	--	--	--	--	--	--	--	--	--	--	--	--	--	--	--	--	--	--	--	--	--	--	--	--	--	--	--	--	--	--	--	--	--	--	--	--	--	--	--	--	--	--	--	--	--	--	--	--	--	--	--	--	--	--	--	--	--	--	--	--	--	--	--	--	--	--	--	--	--	--	--	--	--	--	--	--	--	--	--	--	--	--	--	--	--	--	--	--	--	--	--	--	--	--	--	--	--	--	--	--	--	--	--	--	--	--	--	--	--	--	--	--	--	--	--	--	--	--	--	--	--	--	--	--	--	--	--	--	--	--	--	--	--	--	--	--	--	--	--	--	--	--	--	--	--	--	--	--	--	--	--	--	--	--	--	--	--	--	--	--	--	--	--	--	--	--	--	--	--	--	--	--	--	--	--	--	--	--	--	--	--	--	--	--	--	--	--	--	--	--	--	--	--	--	--	--	--	--	--	--	--	--	--	--	--	--	--	--	--	--	--	--	--	--	--	--	--	--	--	--	--	--	--	--	--	--	--	--	--	--	--	--	--	--	--	--	--	--	--	--	--	--	--	--	--	--	--	--	--	--	--	--	--	--	--	--	--	--	--	--	--	--	--	--	--	--	--	--	--	--	--	--	--	--	--	--	--	--	--	--	--	--	--	--	--	--	--	--	--	--	--	--	--	--	--	--	--	--	--	--	--	--	--	--	--	--	--	--	--	--	--	--	--	--	--	--	--	--	--	--	--	--	--	--	--	--	--	--	--	--	--	--	--	--	--	--	--	--	--	--	--	--	--	--	--	--	--	--	--	--	--	--	--	--	--	--	--	--	--	--	--	--	--	--	--	--	--	--	--	--	--	--	--	--	--	--	--	--	--	--	--	--	--	--	--	--	--	--	--	--	--	--	--	--	--	--	--	--	--	--	--	--	--	--	--	--	--	--	--	--	--	--	--	--	--	--	--	--	--	--	--	--	--	--	--	--	--	--	--	--	--	--	--	--	--	--	--	--	--	--	--	--	--	--	--	--	--	--	--	--	--	--	--	--	--	--	--	--	--	--	--	--	--	--	--	--	--	--	--	--	--	--	--	--	--	--	--	--	--	--	--	--	--	--	--	--	--	--	--	--	--	--	--	--	--	--	--	--	--	--	--	--	--	--	--	--	--	--	--	--	--	--	--	--	--	--	--	--	--	--	--	--	--	--	--	--	--	--	--	--	--	--	--	--	--	--	--	--	--	--	--	--	--	--	--	--	--	--	--	--	--	--	--	--	--	--	--	--	--	--	--	--	--	--	--	--	--	--	--	--	--	--	--	--	--	--	--	--	--	--	--	--	--	--	--	--	--	--	--	--	--	--	--	--	--	--	--	--	--	--	--	--	--	--	--	--	--	--	--	--	--	--	--	--	--	--	--	--	--	--	--	--	--	--	--	--	--	--	--	--	--	--	--	--	--	--	--	--	--	--	--	--	--	--	--	--	--	--	--	--	--	--	--	--	--	--	--	--	--	--	--	--	--	--	--	--	--	--	--	--	--	--	--	--	--	--	--	--	--	--	--	--	--	--	--	--	--	--	--	--	--	--	--	--	--	--	--	--	--	--	--	--	--	--	--	--	--	--	--	--	--	--	--	--	--	--	--	--	--	--	--	--	--	--	--	--	--	--	--	--	--	--	--	--	--	--	--	--	--	--	--	--	--	--	--	--	--	--	--	--	--	--	--	--	--	--	--	--	--	--	--	--	--	--	--	--	--	--	--	--	--	--	--	--	--	--	--	--	--	--	--	--	--	--	--	--	--	--	--	--	--	--	--	--	--	--	--	--	--	--	--	--	--	--	--	--	--	--	--	--	--	--	--	--	--	--	--	--	--	--	--	--	--	--	--	--	--	--	--	--	--	--	--	--	--	--	--	--	--	--	--	--	--	--	--	--	--	--	--	--	--	--	--	--	--	--	--	--	--	--	--	--	--	--	--	--	--	--	--	--	--	--	--	--	--	--	--	--	--	--	--	--	--	--	--	--	--	--	--	--	--	--	--	--	--	--	--	--	--	--	--	--	--	--	--	--	--	--	--	--	--	--	--	--	--	--	--	--	--	--	--	--	--	--	--	--	--	--	--	--	--	--	--	--	--	--	--	--	--	--	--	--	--	--	--	--	--	--	--	--	--	--	--	--	--	--	--	--	--	--	--	--	--	--	--	--	--	--	--	--	--	--	--	--	--	--	--	--	--	--	--	--	--	--	--	--	--	--	--	--	--	--	--	--	--	--	--	--	--	--	--	--	--	--	--	--	--	--	--	--	--	--	--	--	--	--	--	--	--	--	--	--	--	--	--	--	--	--	--	--	--	--	--	--	--	--	--	--	--	--	--	--	--	--	--	--	--	--	--	--	--	--	--	--	--	--	--	--	--	--	--	--	--	--	--	--	--	--	--	--	--	--	--	--	--	--	--	--	--	--	--	--	--	--	--	--	--	--	--	--	--	--	--	--	--	--	--	--	--	--	--	--	--	--	--	--	--	--	--	--	--	--	--	--	--	--	--	--	--	--	--	--	--	--	--	--	--	--	--	--	--	--	--	--	--	--	--	--	--	--	--	--	--	--	--	--	--	--	--	--	--	--	--	--	--	--	--	--	--	--	--	--	--	--	--	--	--	--	--	--	--	--	--

