

LEGEND:

● PROPOSED LOCATION

BLACK DIAMOND MINERALS, LLC

TPR #794-36A PAD
SECTION 36, T7S, R94W, 6th P.M.
SW 1/4 NE 1/4



Uintah Engineering & Land Surveying
85 South 200 East Vernal, Utah 84078
(435) 789-1017 * FAX (435) 789-1813

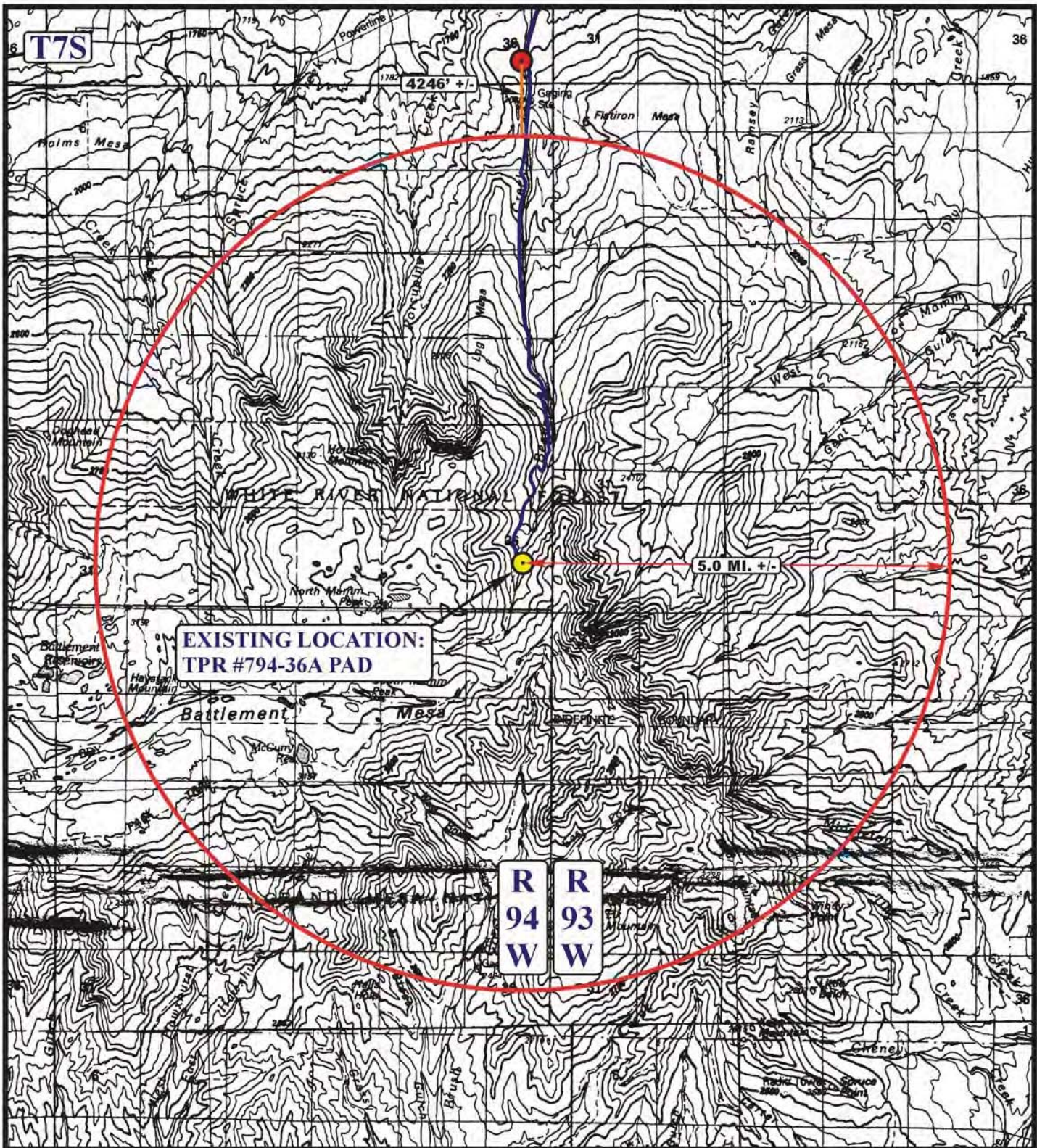


TOPOGRAPHIC
MAP

05 20 08
MONTH DAY YEAR

SCALE: 1:100,000 DRAWN BY: L.K. REV: 11-05-13 JMF





LEGEND:

 **PROPOSED LOCATION**



BLACK DIAMOND MINERALS, LLC

TPR #794-36A PAD

SECTION 36, T7S, R94W, 6th P.M.

SW 1/4 NE 1/4



Uintah Engineering & Land Surveying
85 South 200 East Vernal, Utah 84078
(435) 789-1017 * FAX (435) 789-1813

**TOPOGRAPHIC
MAP**

05 20 08
MONTH DAY YEAR

**A1
TOPO**

SCALE: 1:100,000

DRAWN BY: L.K.

REV: 11-05-13 JMF