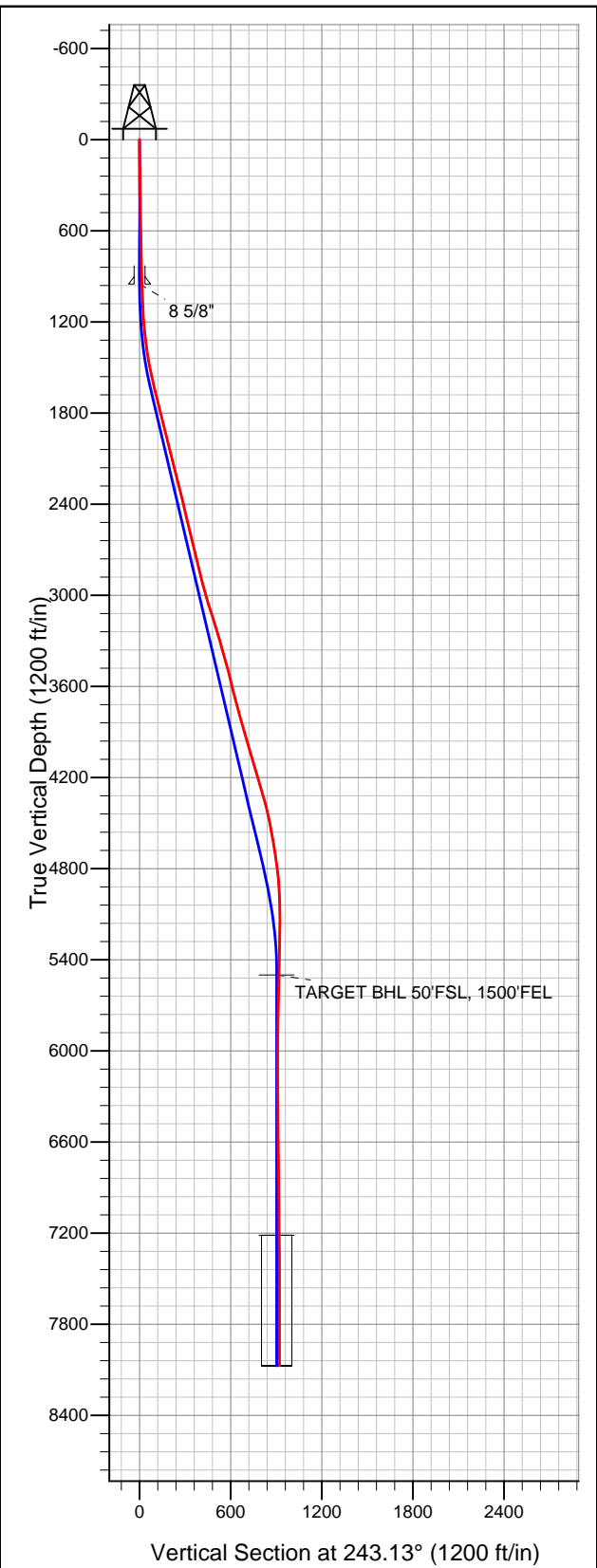


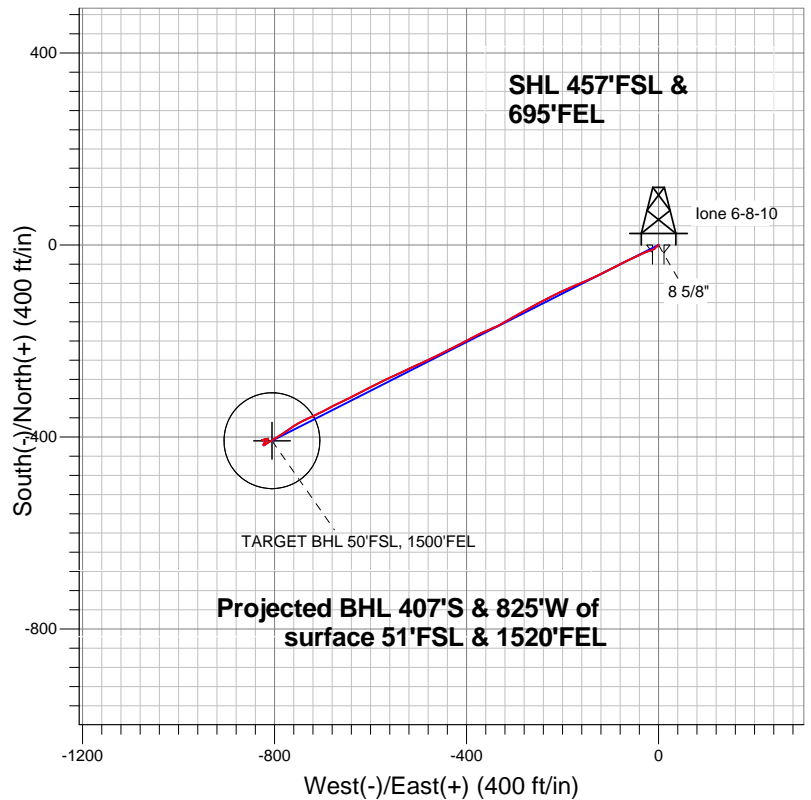


Well Name: lone 6-8-10

Surface Location: lone 8-6-10 Pad Sec.10-T2N-R66W
North American Datum 1983 US State Plane 1983 Colorado Northern Zone
Ground Elevation: 5016.0
+N/-S +E/-W Northing Easting Latitude Longitude Slot
0.0 0.0 1297150.77 3207899.66 40.146680 -104.756300
Original Well Elev WELL @ 5029.0ft (Original Well Elev)



EnCana Oil & Gas Weld County CO



LEGEND

- lone 6-8-10, Wellbore #1, Plan #1 (5-09-13) V0
- Wellbore #1
- Survey #1

Final Survey Plot

Projected Final Survey -
8185'MD & 8073'TVD @ 920'VS
0.3 deg Inc 194.84 deg AZ

Project: SEC.10-T2N-R66W
Site: lone 8-6-10 Pad Sec.10-T2N-R66W
Well: lone 6-8-10
Plan: Wellbore #1



EnCana Oil & Gas Weld County CO

SEC.10-T2N-R66W

lone 8-6-10 Pad Sec.10-T2N-R66W

lone 6-8-10

Wellbore #1

Survey: Survey #1

Standard Survey Report

12 June, 2013



Company:	EnCana Oil & Gas Weld County CO	Local Co-ordinate Reference:	Well lone 6-8-10
Project:	SEC.10-T2N-R66W	TVD Reference:	WELL @ 5029.0ft (Original Well Elev)
Site:	lone 8-6-10 Pad Sec.10-T2N-R66W	MD Reference:	WELL @ 5029.0ft (Original Well Elev)
Well:	lone 6-8-10	North Reference:	True
Wellbore:	Wellbore #1	Survey Calculation Method:	Minimum Curvature
Design:	Wellbore #1	Database:	Landmark

Project	SEC.10-T2N-R66W, Weld County, Colorado		
Map System:	US State Plane 1983	System Datum:	Mean Sea Level
Geo Datum:	North American Datum 1983		Using Well Reference Point
Map Zone:	Colorado Northern Zone		Using geodetic scale factor

Site	lone 8-6-10 Pad Sec.10-T2N-R66W		
Site Position:		Northing:	1,297,161.70ft
From:	Lat/Long	Easting:	3,207,899.57ft
Position Uncertainty:	0.0 ft	Slot Radius:	"
		Latitude:	40.146710
		Longitude:	-104.756300
		Grid Convergence:	0.48 °

Well	lone 6-8-10		
Well Position	+N/-S	0.0 ft	Northing: 1,297,150.77 ft
	+E/-W	0.0 ft	Easting: 3,207,899.66 ft
Position Uncertainty	0.0 ft	Wellhead Elevation:	ft
		Latitude:	40.146680
		Longitude:	-104.756300
		Ground Level:	5,016.0ft

Wellbore	Wellbore #1				
Magnetics	Model Name	Sample Date	Declination (°)	Dip Angle (°)	Field Strength (nT)
	IGRF2010	5/13/2013	8.58	66.78	52,796

Design	Wellbore #1				
Audit Notes:					
Version:	1.0	Phase:	ACTUAL	Tie On Depth:	0.0
Vertical Section:	Depth From (TVD) (ft)	+N/-S (ft)	+E/-W (ft)	Direction (°)	
	5,500.0	0.0	0.0	243.13	

Survey Program	Date	6/12/2013			
From (ft)	To (ft)	Survey (Wellbore)	Tool Name	Description	
47.0	8,185.0	Survey #1 (Wellbore #1)	MWD	MWD - Standard	

Survey										
Measured Depth (ft)	Inclination (°)	Azimuth (°)	Vertical Depth (ft)	+N/-S (ft)	+E/-W (ft)	Vertical Section (ft)	Dogleg Rate (°/100ft)	Build Rate (°/100ft)	Turn Rate (°/100ft)	
0.0	0.00	0.00	0.0	0.0	0.0	0.0	0.00	0.00	0.00	
47.0	0.40	245.20	47.0	-0.1	-0.1	0.2	0.85	0.85	0.00	
137.0	0.80	221.50	137.0	-0.7	-0.9	1.1	0.51	0.44	-26.33	
227.0	0.70	212.00	227.0	-1.6	-1.6	2.1	0.18	-0.11	-10.56	
317.0	0.80	219.50	317.0	-2.6	-2.2	3.2	0.16	0.11	8.33	
408.0	0.90	232.90	408.0	-3.5	-3.2	4.4	0.24	0.11	14.73	
498.0	0.90	236.00	498.0	-4.3	-4.4	5.8	0.05	0.00	3.44	
589.0	1.10	229.50	588.9	-5.3	-5.6	7.4	0.25	0.22	-7.14	
680.0	1.10	220.90	679.9	-6.5	-6.9	9.1	0.18	0.00	-9.45	
772.0	1.00	219.00	771.9	-7.8	-7.9	10.6	0.12	-0.11	-2.07	
864.0	1.90	244.00	863.9	-9.1	-9.8	12.9	1.17	0.98	27.17	
958.0	1.80	250.30	957.8	-10.3	-12.6	15.9	0.24	-0.11	6.70	
1,041.0	1.90	249.60	1,040.8	-11.2	-15.1	18.6	0.12	0.12	-0.84	

Company:	EnCana Oil & Gas Weld County CO	Local Co-ordinate Reference:	Well lone 6-8-10
Project:	SEC.10-T2N-R66W	TVD Reference:	WELL @ 5029.0ft (Original Well Elev)
Site:	lone 8-6-10 Pad Sec.10-T2N-R66W	MD Reference:	WELL @ 5029.0ft (Original Well Elev)
Well:	lone 6-8-10	North Reference:	True
Wellbore:	Wellbore #1	Survey Calculation Method:	Minimum Curvature
Design:	Wellbore #1	Database:	Landmark

Survey									
Measured Depth (ft)	Inclination (°)	Azimuth (°)	Vertical Depth (ft)	+N/-S (ft)	+E/-W (ft)	Vertical Section (ft)	Dogleg Rate (°/100ft)	Build Rate (°/100ft)	Turn Rate (°/100ft)
1,127.0	3.10	251.70	1,126.7	-12.4	-18.7	22.3	1.40	1.40	2.44
1,213.0	4.80	249.80	1,212.5	-14.4	-24.3	28.1	1.98	1.98	-2.21
1,298.0	6.40	246.80	1,297.1	-17.5	-32.0	36.4	1.91	1.88	-3.53
1,384.0	8.40	244.30	1,382.4	-22.1	-42.0	47.5	2.35	2.33	-2.91
1,470.0	10.50	245.20	1,467.2	-28.1	-54.8	61.6	2.45	2.44	1.05
1,556.0	12.30	243.40	1,551.5	-35.5	-70.1	78.6	2.13	2.09	-2.09
1,641.0	13.40	241.80	1,634.4	-44.2	-86.9	97.5	1.36	1.29	-1.88
1,727.0	14.20	244.10	1,717.9	-53.5	-105.1	118.0	1.13	0.93	2.67
1,813.0	13.90	244.30	1,801.3	-62.6	-123.9	138.9	0.35	-0.35	0.23
1,898.0	13.50	245.90	1,883.9	-71.1	-142.2	159.0	0.65	-0.47	1.88
1,984.0	13.80	246.70	1,967.5	-79.2	-160.8	179.2	0.41	0.35	0.93
2,070.0	14.60	247.10	2,050.8	-87.5	-180.2	200.3	0.94	0.93	0.47
2,156.0	14.10	245.70	2,134.2	-96.0	-199.7	221.6	0.71	-0.58	-1.63
2,241.0	14.20	241.70	2,216.6	-105.2	-218.3	242.3	1.16	0.12	-4.71
2,327.0	14.30	243.20	2,299.9	-115.0	-237.1	263.5	0.44	0.12	1.74
2,413.0	12.80	242.40	2,383.5	-124.2	-255.0	283.6	1.76	-1.74	-0.93
2,499.0	13.50	240.60	2,467.3	-133.6	-272.2	303.2	0.94	0.81	-2.09
2,584.0	14.10	240.60	2,549.8	-143.5	-289.9	323.5	0.71	0.71	0.00
2,670.0	13.50	239.90	2,633.3	-153.7	-307.7	343.9	0.72	-0.70	-0.81
2,756.0	13.60	240.40	2,717.0	-163.7	-325.2	364.1	0.18	0.12	0.58
2,842.0	13.20	246.90	2,800.6	-172.6	-343.0	384.0	1.81	-0.47	7.56
2,927.0	14.00	246.80	2,883.2	-180.4	-361.4	403.9	0.94	0.94	-0.12
3,013.0	16.40	243.10	2,966.2	-190.0	-381.8	426.4	3.01	2.79	-4.30
3,099.0	17.50	241.80	3,048.5	-201.6	-404.0	451.5	1.35	1.28	-1.51
3,184.0	17.00	242.00	3,129.7	-213.5	-426.2	476.7	0.59	-0.59	0.24
3,270.0	17.00	244.10	3,211.9	-224.9	-448.6	501.8	0.71	0.00	2.44
3,356.0	16.00	244.70	3,294.4	-235.5	-470.7	526.3	1.18	-1.16	0.70
3,442.0	15.70	245.70	3,377.1	-245.3	-492.0	549.7	0.47	-0.35	1.16
3,527.0	15.70	245.00	3,458.9	-254.9	-512.9	572.7	0.22	0.00	-0.82
3,613.0	14.20	244.30	3,542.0	-264.4	-532.9	594.9	1.76	-1.74	-0.81
3,699.0	13.70	245.70	3,625.5	-273.2	-551.7	615.6	0.70	-0.58	1.63
3,785.0	14.40	244.70	3,708.9	-281.9	-570.7	636.5	0.86	0.81	-1.16
3,870.0	15.60	242.20	3,791.0	-291.8	-590.3	658.5	1.60	1.41	-2.94
3,956.0	15.80	242.90	3,873.8	-302.5	-611.0	681.7	0.32	0.23	0.81
4,042.0	16.30	244.00	3,956.4	-313.1	-632.3	705.5	0.68	0.58	1.28
4,128.0	16.80	243.40	4,038.9	-324.0	-654.2	730.0	0.61	0.58	-0.70
4,213.0	16.80	242.90	4,120.2	-335.1	-676.1	754.6	0.17	0.00	-0.59
4,299.0	16.10	243.80	4,202.7	-346.0	-697.9	778.9	0.87	-0.81	1.05
4,385.0	16.00	244.00	4,285.4	-356.5	-719.3	802.7	0.13	-0.12	0.23
4,470.0	15.90	244.10	4,367.1	-366.7	-740.3	826.1	0.12	-0.12	0.12
4,556.0	12.80	237.10	4,450.4	-377.0	-758.9	847.3	4.12	-3.60	-8.14
4,642.0	10.10	235.50	4,534.7	-386.5	-773.1	864.3	3.16	-3.14	-1.86
4,728.0	9.60	236.20	4,619.4	-394.7	-785.2	878.9	0.60	-0.58	0.81
4,813.0	8.50	238.70	4,703.4	-401.9	-796.5	892.2	1.37	-1.29	2.94
4,899.0	7.50	240.30	4,788.5	-408.0	-806.8	904.1	1.19	-1.16	1.86
4,985.0	5.60	236.40	4,874.0	-413.1	-815.2	913.9	2.27	-2.21	-4.53
5,071.0	2.60	234.80	4,959.7	-416.6	-820.3	920.0	3.49	-3.49	-1.86
5,156.0	0.60	264.30	5,044.7	-417.7	-822.3	922.3	2.47	-2.35	34.71
5,328.0	0.90	13.00	5,216.7	-416.5	-822.9	922.3	0.72	0.17	63.20
5,499.0	1.10	27.70	5,387.7	-413.7	-821.8	920.1	0.19	0.12	8.60
5,611.6	1.29	38.96	5,500.3	-411.8	-820.5	918.0	0.27	0.17	10.00
TARGET BHL 50'FSL, 1500'FEL									
5,671.0	1.40	43.60	5,559.6	-410.7	-819.6	916.8	0.27	0.19	7.81
5,842.0	1.30	38.80	5,730.6	-407.7	-816.9	913.0	0.09	-0.06	-2.81

Company:	EnCana Oil & Gas Weld County CO	Local Co-ordinate Reference:	Well lone 6-8-10
Project:	SEC.10-T2N-R66W	TVD Reference:	WELL @ 5029.0ft (Original Well Elev)
Site:	lone 8-6-10 Pad Sec.10-T2N-R66W	MD Reference:	WELL @ 5029.0ft (Original Well Elev)
Well:	lone 6-8-10	North Reference:	True
Wellbore:	Wellbore #1	Survey Calculation Method:	Minimum Curvature
Design:	Wellbore #1	Database:	Landmark

Survey

Measured Depth (ft)	Inclination (°)	Azimuth (°)	Vertical Depth (ft)	+N/-S (ft)	+E/-W (ft)	Vertical Section (ft)	Dogleg Rate (°/100ft)	Build Rate (°/100ft)	Turn Rate (°/100ft)
6,014.0	1.00	35.10	5,902.5	-405.0	-814.9	909.9	0.18	-0.17	-2.15
6,185.0	0.40	74.10	6,073.5	-403.6	-813.4	908.0	0.43	-0.35	22.81
6,357.0	0.90	203.20	6,245.5	-404.7	-813.4	908.5	0.69	0.29	75.06
6,528.0	1.10	282.40	6,416.5	-405.5	-815.5	910.8	0.75	0.12	46.32
6,699.0	0.80	279.60	6,587.5	-405.0	-818.3	913.0	0.18	-0.18	-1.64
6,871.0	0.60	260.60	6,759.5	-404.9	-820.4	914.8	0.18	-0.12	-11.05
7,042.0	0.60	233.40	6,930.5	-405.6	-822.0	916.6	0.17	0.00	-15.91
7,214.0	0.50	231.30	7,102.4	-406.6	-823.3	918.2	0.06	-0.06	-1.22
7,326.4	0.43	233.30	7,214.9	-407.2	-824.0	919.1	0.06	-0.06	1.78
TARGET CIRCLE 50'FSL & 1500'FEL									
7,385.0	0.40	234.60	7,273.4	-407.4	-824.3	919.5	0.06	-0.06	2.22
7,557.0	0.30	306.50	7,445.4	-407.5	-825.2	920.3	0.24	-0.06	41.80
7,728.0	0.10	351.90	7,616.4	-407.1	-825.6	920.4	0.14	-0.12	26.55
7,902.0	0.30	23.90	7,790.4	-406.5	-825.4	920.0	0.13	0.11	18.39
8,077.0	0.30	186.30	7,965.4	-406.6	-825.3	919.9	0.34	0.00	92.80
8,139.0	0.30	191.20	8,027.4	-406.9	-825.3	920.1	0.04	0.00	7.90
8,185.0	0.30	194.84	8,073.4	-407.1	-825.4	920.3	0.04	0.00	7.91

Checked By: _____ Approved By: _____ Date: _____