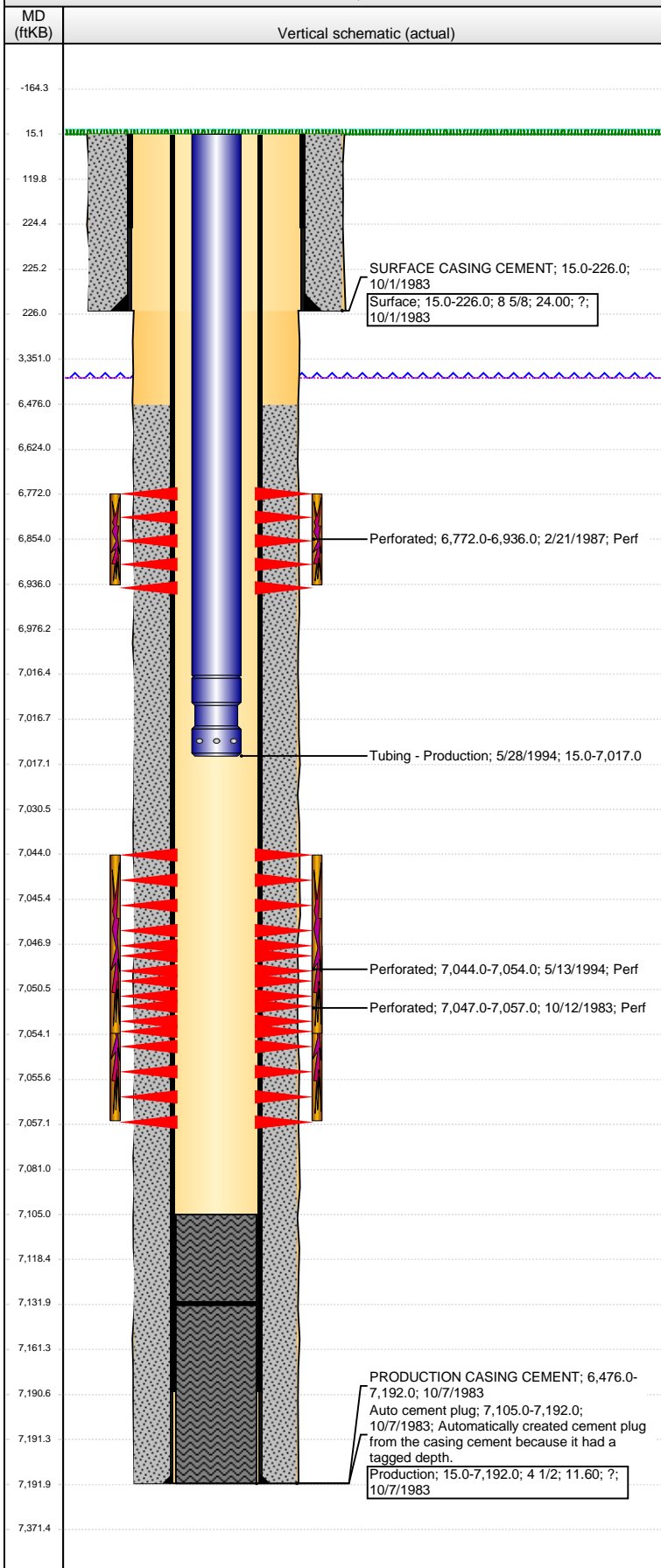


Well Name: WAGNER 10-01

VERTICAL - ORIGINAL HOLE, 11/8/2013 11:07:02 AM



Well Header

API	Business Unit	District	Well Config
05-123-11390	WATTENBERG	15	VERTICAL
Original KB Elevation (ft)	KB - GL / MSL (ftKB)	Spud Date	P & A Date
4,692.00	15.00	10/1/1983	

Comment
SKETCHY DATA

Directions To Well

Congressional Location

Quarter 1	Quarter 2	Quarter 3	Quarter 4	Section	Township	Twnshp N...	Range	Rng E/W Dir
		SW	SE	10	4	N	65	W

Bottom Hole Location

North-South Distance (ft)	From N or S Line	East-West Distance (ft)	From E or W Line

Plug Back Total Depths

Date	Depth (ftKB)	Method	Com
10/11/1983	7,105.0	CASED HOLE LOG	DEPTH LOGGER ON CBL
5/28/1994	7,132.0	TAG	MOST RECENT CLEANOUT

Wellbore Sections

Section Des	Size (in)	Act Top (ftKB)	Act Btm (ftKB)
SURFACE	12 1/4	15.0	226.0
PRODUCTION	7 7/8	226.0	7,192.0

Zone Statuses

Zone Name	Status Date	Status	Job
CODELL	11/11/1983	PR	DRILLING/COMPLETION - ORIGINAL, 10/1/1983 00:00
CODELL	5/31/1994	PR	RECOMPLETION, 2/19/1987 00:00
NIOBRARA	3/2/1987	PR	RECOMPLETION, 2/19/1987 00:00

Casing Strings

Surface, 226.0ftKB

Casing Description	Run Date	OD (in)	Wt/Len (l...	Grade	Top, MD (ft...	MD (ftKB)
Surface	10/1/1983	8 5/8	24.00	?	15.0	226.0

Production, 7,192.0ftKB

Casing Description	Run Date	OD (in)	Wt/Len (l...	Grade	Top, MD (ft...	MD (ftKB)
Production	10/7/1983	4 1/2	11.60	?	15.0	7,192.0

Cement

Description	Top Depth (ftKB)	Bottom Depth (ftKB)
SURFACE CASING CEMENT	15.0	226.0
PRODUCTION CASING CEMENT	6,476.0	7,192.0

Tubing Components

Item Des	OD (in)	Wt (lb/ft)	Grade	Jts	Len (ft)	Btm (ftKB)	Btm (TVD) (ftKB)
Tubing	2 3/8	4.70	?	217	7,001.30	7,016.3	
Seat nipple	2 3/8	4.70	?		0.70	7,017.0	

Perforation Data

Zone	Bnch/St g	Entered Shot Total	Top (ftKB)	Btm (ftKB)	Date
NIOBRARA, ORIGINAL HOLE		12	6,772.00	6,936.00	2/21/1987
CODELL, ORIGINAL HOLE		40	7,044.00	7,054.00	5/13/1994
CODELL, ORIGINAL HOLE		21	7,047.00	7,057.00	10/12/1983

Stimulations & Treatments

Date	Zone	Primary Job Type
10/14/1983	CODELL, ORIGINAL HOLE	DRILLING/COMPLETION - ORIGINAL
Technical Result	Tech Result Details	Tech Result Note

Comment
AMOUNT OF NARS UNKNOWN

Date	Zone	Primary Job Type
2/24/1987	NIOBRARA, ORIGINAL HOLE	RECOMPLETION
Technical Result	Tech Result Details	Tech Result Note

Comment

Date	Zone	Primary Job Type
5/25/1994	CODELL, ORIGINAL HOLE	RE-FRAC
Technical Result	Tech Result Details	Tech Result Note

Comment

VERTICAL - ORIGINAL HOLE. 11/8/2013 11:07:04 AM

Other In Hole	
---------------	--

Run Date	Des	OD (in)	Top (ftKB)	Btm (ftKB)

Logs

Date	Type	Top (ftKB)	Btm (ftKB)
10/7/1983	COMPENSATED DENSITY	226.0	7,192.0
10/7/1983	INDUCTION	226.0	7,188.0
10/11/1983	CEMENT BOND	6,300.0	7,097.0

