

T6S, R95W, 6th P.M.

WPX Energy Rocky Mountain, LLC

Well location, EXXONMOBIL AP 421-20-695, located as shown in 19837 LA PAZ No.10 Placer of Section 20, T6S, R95W, 6th P.M., Garfield County, Colorado.

1921 Brass Cap  
1.4' High, Steel Post  
Lat: 39.517661°  
Long: 108.031786°

WC  
1921 Brass Cap  
1.0' High, Pile  
of Stones  
Lat: 39.517658°  
Long: 108.013317°

S89°57'16"W -  
5278.27' (Meas. to True)

EXXONMOBIL  
AP 421-20-695  
Elev. Ungraded Ground = 6909.0'

L11 Lot 1 LA PAZ PLACER 10  
Corner #3 (19837),  
Steel Cap, 1.5" Pipe  
Lat: 39.515992°  
Long: 108.020526°  
L10 Lot 2 LA PAZ PLACER 10  
Corner #4 (19837),  
Steel Cap, 1.5" Pipe  
Lat: 39.515975°  
Long: 108.022864°

**LEGEND:**

- └─ = 90° SYMBOL  
● = PROPOSED WELL HEAD.  
▲ = SECTION CORNERS LOCATED.  
△ = SECTION CORNERS RE-ESTAB.  
(Not Set on Ground)

LINE TABLE		
LINE	BEARING	LENGTH
L1	N00°12'34"W	198.17'
L2	N00°01'10"E	118.31'
L3	S89°37'52"W	253.21'
L4	N00°05'21"E	66.00'
L5	S89°57'16"W	66.00'
L6	N87°55'56"E	200.68'
L7	S89°44'21"W	184.35'
L8	S89°44'21"W	2634.02'
L9	S88°31'24"W	2639.05'
L10	S00°04'13"W	1989.28'
L11	S89°25'25"W	660.12'

**BASIS OF ELEVATION**

SPOT ELEVATION AT THE NORTHWEST CORNER OF SECTION 30, T5S, R95W, 6th P.M. TAKEN FROM THE FORKED GULCH QUADRANGLE, COLORADO, GARFIELD COUNTY, 7.5 MINUTE SERIES (TOPOGRAPHICAL MAP) PUBLISHED BY THE UNITED STATES DEPARTMENT OF THE INTERIOR, GEOLOGICAL SURVEY. SAID ELEVATION IS MARKED AS BEING 5966 FEET.

**BASIS OF BEARINGS**

BASIS OF BEARINGS IS A G.P.S. OBSERVATION.

NOTE:  
SEE CURRENT FOOTAGE PLAT #6 FOR  
EXISTING IMPROVEMENT WITHIN 500' OF  
THE PROPOSED WELL DISTURBANCE.



PLAT #1



**CERTIFICATE**

THIS IS TO CERTIFY THAT THE ABOVE PLAT WAS PREPARED AND LOCATION AS SHOWN WAS STAKED ON THE GROUND FROM FIELD NOTES OF ACTUAL SURVEYS MADE BY ME OR UNDER MY SUPERVISION AND THAT THE SAME ARE TRUE AND CORRECT TO THE BEST OF MY KNOWLEDGE AND BELIEF.

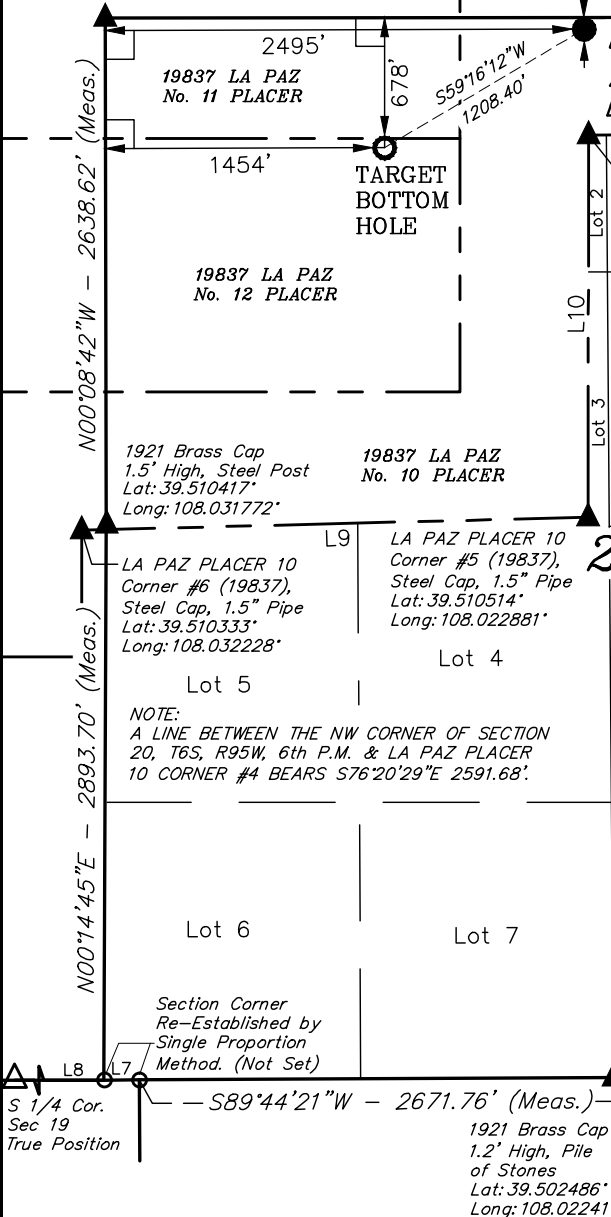
REGISTERED LAND SURVEYOR  
REGISTRATION NO. 17492  
STATE OF COLORADO

WC 1921 Brass  
Cap 1.2' High  
Lat: 39.502167°  
Long: 108.013114°

Revised: 09-25-13 M.D.  
Revised: 09-26-11 D.R.B.  
Revised: 09-12-11 D.R.B.

**UINTAH ENGINEERING & LAND SURVEYING**  
85 SOUTH 200 EAST - VERNAL, UTAH 84078  
(435) 789-1017

SCALE 1" = 1000'	DATE SURVEYED: 04-28-10	DATE DRAWN: 03-17-11
PARTY B.B. B.J. D.R.B.	REFERENCES G.L.O. PLAT	
WEATHER COOL	FILE WPX Energy Rocky Mountain, LLC	



S 1/4 Cor.  
Sec 19  
True Position

**NAD 83 (TARGET BOTTOM HOLE)**

LATITUDE = 39°30'56.87" (39.515797)  
LONGITUDE = 108°01'35.87" (108.026631)

**STATE PLANE-(COLO. CENTRAL-NAD 83)**

N = 1622670.00  
E = 2287276.50

**NAD 83 (SURFACE LOCATION)**

LATITUDE = 39°31'02.97" (39.517492)  
LONGITUDE = 108°01'22.61" (108.022947)

**STATE PLANE-(COLO. CENTRAL-NAD 83)**

N = 1623257.22  
E = 2288332.20

PDOP = 3.6