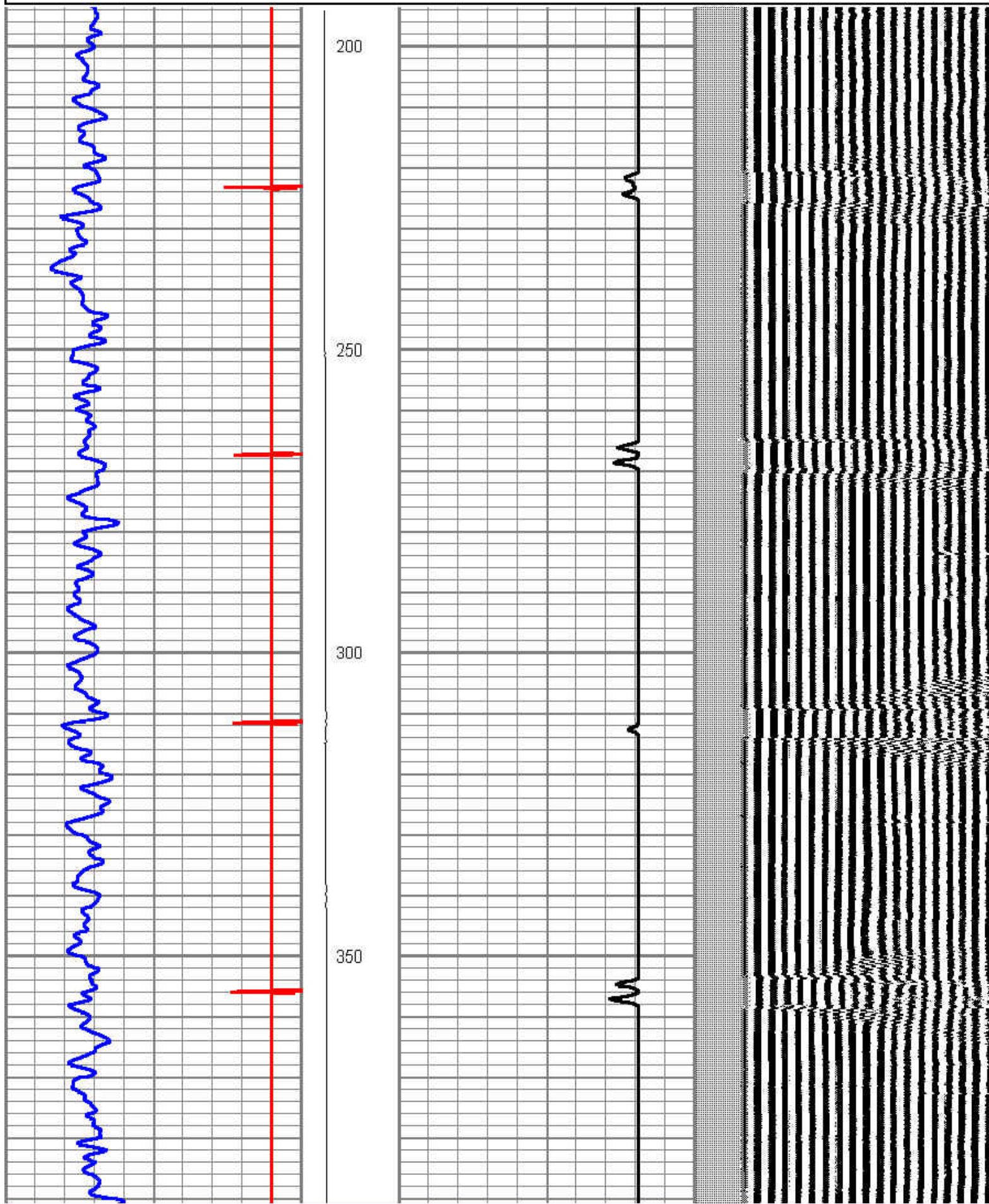
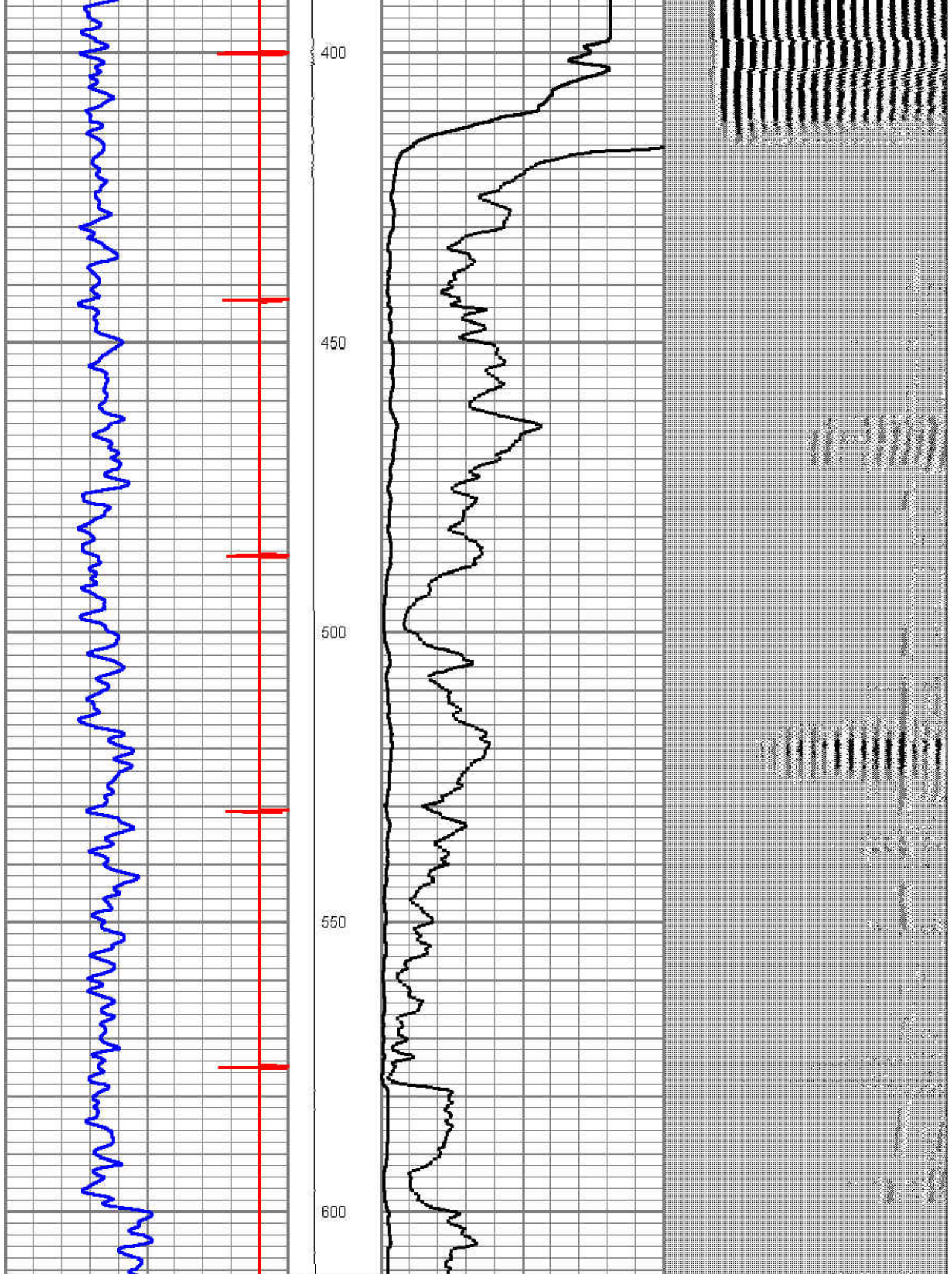


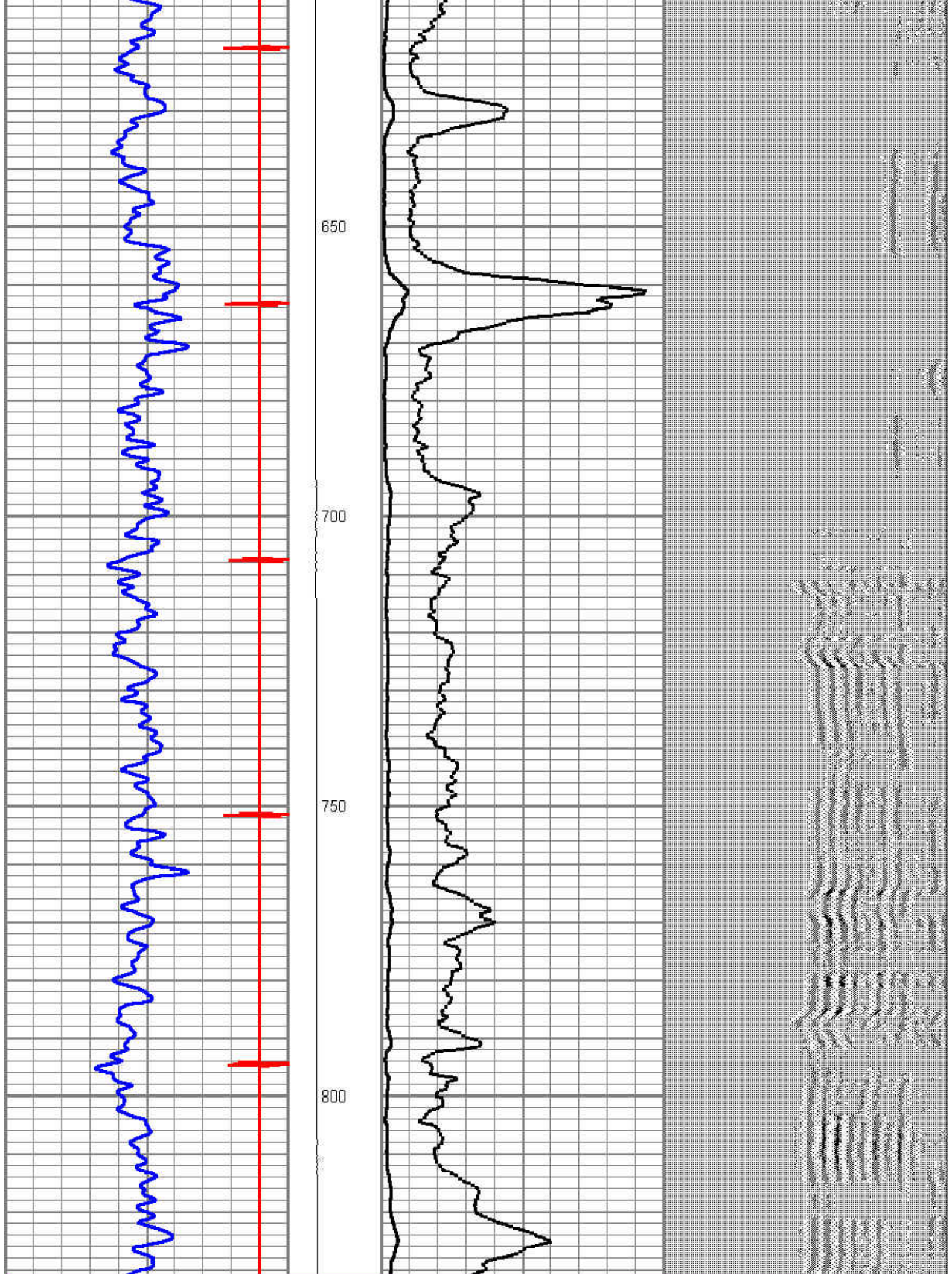
			cent.-Probe (cent) probe cent.	2.88	2.75	25.00
			cent.-Probe (cent) probe cent.	2.88	2.75	25.00
WVF3	15.35		CBL-Probe (110215) 2.75 digital probe	8.75	2.75	106.50
WVF5	14.35					
			cent.-Probe (cent) probe cent.	2.88	2.75	25.00
CCL	7.00		CCL-Probe (081119)	2.02	2.75	
GR	3.67		GR-Probe275dig (110249) Probe Digital Gamma-Ray	3.33	2.75	57.00
			cent.-Probe (cent) probe cent.	2.88	2.75	25.00
Dataset: bella 19-8.db; field/well/run1/pass2 Total Length: 26.60 ft Total Weight: 264.50 lb O.D.: 2.75 in						

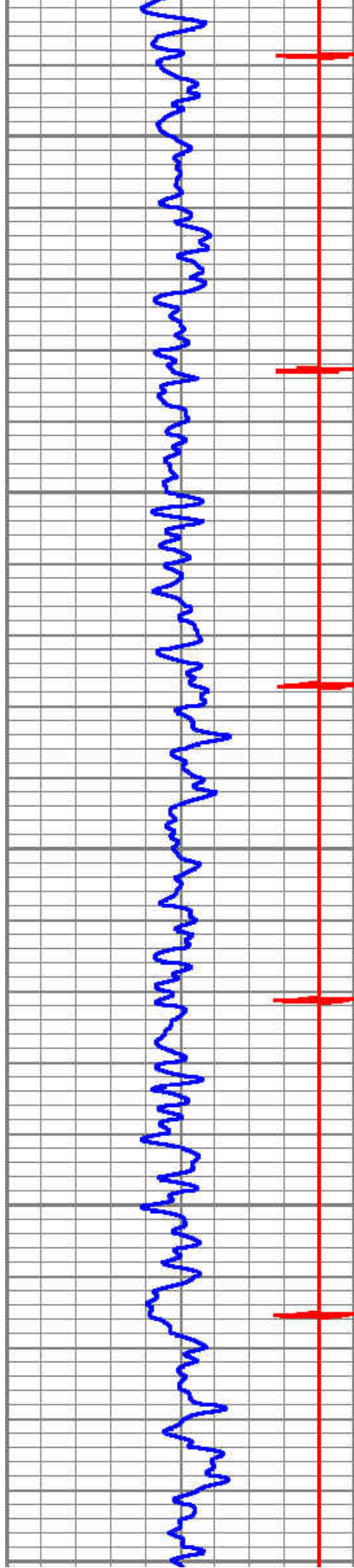
Database File: bella 19-8.db
 Dataset Pathname: pass2
 Presentation Format: cbl_dr
 Dataset Creation: Fri Nov 01 07:35:53 2013 by Log SCH 120420

9	Collar Locator	-1	LTEN	0	Amplified Amplitude (mV)	10	200	Variable Density	1200
0	Gamma Ray (GAPI)	150	0 (lb)1000	0	Amplitude (mV)	100			









850

900

950

1000

1050

