

ENSIGN

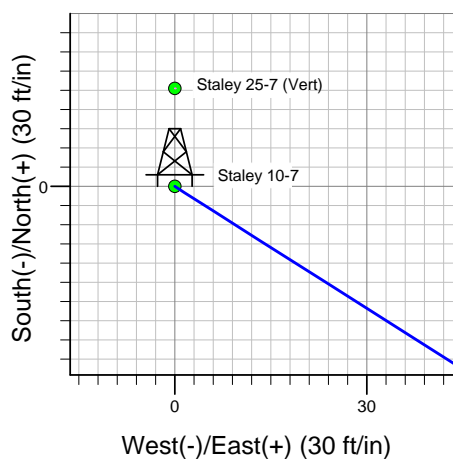
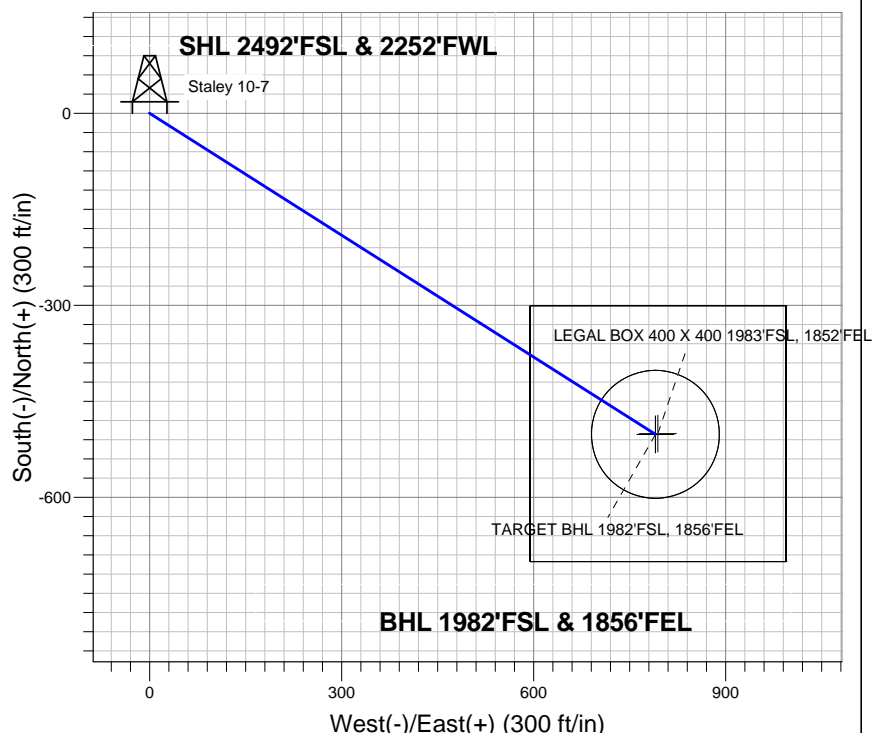
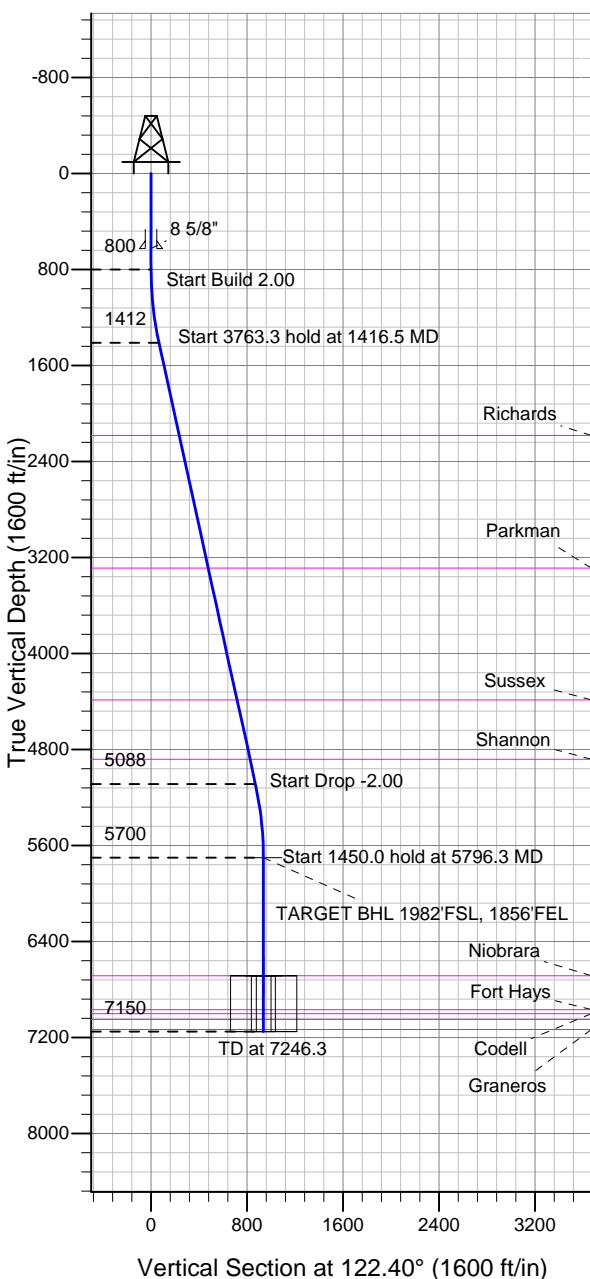
Directional

Well Name: **Staley 10-7**

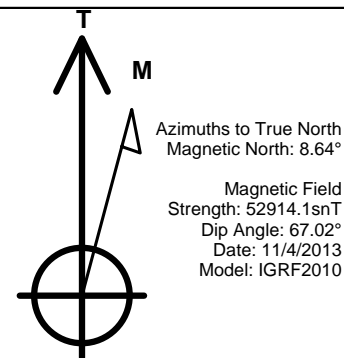
Surface Location: Staley 10-7 Pad Sec.7-T6N-R67W
 North American Datum 1983 , US State Plane 1983 , Colorado Northern Zone
 Ground Elevation: 4820.0

+N/-S	+E/-W	Northing	Easting	Latitude	Longitude	Slot
0.0	0.0	1425737.41	3156827.14	40.500681	-104.936066	
Original Well Elev WELL @ 4836.0ft (Original Well Elev)						

Bayswater Exploration & Production, LLC



Staley 10-7
 Plan #2 (11-04-13)
 7:55, November 04 2013



WELLBORE TARGET DETAILS (LAT/LONG)

Name	TVD	+N/-S	+E/-W	Latitude	Longitude	Shape
TARGET BHL 1982'FSL, 1856'FEL	5700.0	-501.4	790.1	40.499305	-104.933225	Point
LEGAL BOX 400 X 400 1983'FSL, 1852'FEL	6685.0	-500.4	794.1	40.499308	-104.933211	Rectangle (Sides: L400.0 W400.0)
TARGET CIRCLE 1982'FSL, 1856'FEL	6685.0	-501.4	790.1	40.499305	-104.933225	Circle (Radius: 100.0)

SECTION DETAILS

Sec	MD	Inc	Azi	TVD	+N/-S	+E/-W	DLeg	TFace	VSec	Target
1	0.0	0.00	0.00	0.0	0.0	0.0	0.00	0.00	0.0	
2	800.0	0.00	0.00	800.0	0.0	0.0	0.00	0.00	0.0	
3	1416.5	12.33	122.40	1411.8	-35.4	55.8	2.00	122.40	66.1	
4	5179.8	12.33	122.40	5088.2	-466.0	734.3	0.00	0.00	869.7	
5	5796.3	0.00	0.00	5700.0	-501.4	790.1	2.00	180.00	935.8	TARGET BHL 1982'FSL, 1856'FEL
6	7246.3	0.00	0.00	7150.0	-501.4	790.1	0.00	0.00	935.8	



Bayswater Exploration & Production, LLC

SEC.7-T6N-R67W

Staley 10-7 Pad Sec.7-T6N-R67W

Staley 10-7

Wellbore #1

Plan: Plan #2 (11-04-13)

Standard Planning Report

04 November, 2013



Database:	Landmark	Local Co-ordinate Reference:	Well Staley 10-7
Company:	Bayswater Exploration & Production, LLC	TVD Reference:	WELL @ 4836.0ft (Original Well Elev)
Project:	SEC.7-T6N-R67W	MD Reference:	WELL @ 4836.0ft (Original Well Elev)
Site:	Staley 10-7 Pad Sec.7-T6N-R67W	North Reference:	True
Well:	Staley 10-7	Survey Calculation Method:	Minimum Curvature
Wellbore:	Wellbore #1		
Design:	Plan #2 (11-04-13)		

Project	SEC.7-T6N-R67W, Weld County, CO		
Map System:	US State Plane 1983	System Datum:	Mean Sea Level
Geo Datum:	North American Datum 1983		Using Well Reference Point
Map Zone:	Colorado Northern Zone		Using geodetic scale factor

Site						Staley 10-7 Pad Sec.7-T6N-R67W							
Site Position:						Northing:		1,425,762.40ft		Latitude:		40.500750	
From:			Lat/Long			Easting:		3,156,826.99ft		Longitude:		-104.936066	
Position Uncertainty:			0.0 ft			Slot Radius:		"		Grid Convergence:		0.36 °	

Well	Staley 10-7					
Well Position	+N/-S	-25.0 ft	Northing:	1,425,737.41 ft	Latitude:	40.500681
	+E/-W	0.0 ft	Easting:	3,156,827.14 ft	Longitude:	-104.936066
Position Uncertainty		0.0 ft	Wellhead Elevation:	ft	Ground Level:	4,820.0 ft

Wellbore	Wellbore #1				
Magnetics	Model Name	Sample Date	Declination (°)	Dip Angle (°)	Field Strength (nT)
	IGRF2010	11/4/2013	8.64	67.02	52,914

Design	Plan #2 (11-04-13)			
Audit Notes:				
Version:	Phase:	PROTOTYPE	Tie On Depth:	0.0
Vertical Section:	Depth From (TVD) (ft)	+N/-S (ft)	+E/-W (ft)	Direction (°)
	0.0	0.0	0.0	122.40

Plan Sections										
Measured Depth (ft)	Inclination (°)	Azimuth (°)	Vertical Depth (ft)	+N/-S (ft)	+E/-W (ft)	Dogleg Rate (°/100ft)	Build Rate (°/100ft)	Turn Rate (°/100ft)	TFO (°)	Target
0.0	0.00	0.00	0.0	0.0	0.0	0.00	0.00	0.00	0.00	
800.0	0.00	0.00	800.0	0.0	0.0	0.00	0.00	0.00	0.00	
1,416.5	12.33	122.40	1,411.8	-35.4	55.8	2.00	2.00	0.00	122.40	
5,179.8	12.33	122.40	5,088.2	-466.0	734.3	0.00	0.00	0.00	0.00	
5,796.3	0.00	0.00	5,700.0	-501.4	790.1	2.00	-2.00	0.00	180.00	TARGET BHL 1982
7,246.3	0.00	0.00	7,150.0	-501.4	790.1	0.00	0.00	0.00	0.00	

Database:	Landmark	Local Co-ordinate Reference:	Well Staley 10-7
Company:	Bayswater Exploration & Production, LLC	TVD Reference:	WELL @ 4836.0ft (Original Well Elev)
Project:	SEC.7-T6N-R67W	MD Reference:	WELL @ 4836.0ft (Original Well Elev)
Site:	Staley 10-7 Pad Sec.7-T6N-R67W	North Reference:	True
Well:	Staley 10-7	Survey Calculation Method:	Minimum Curvature
Wellbore:	Wellbore #1		
Design:	Plan #2 (11-04-13)		

Planned Survey									
Measured Depth (ft)	Inclination (°)	Azimuth (°)	Vertical Depth (ft)	+N/-S (ft)	+E/-W (ft)	Vertical Section (ft)	Dogleg Rate (°/100ft)	Build Rate (°/100ft)	Turn Rate (°/100ft)
0.0	0.00	0.00	0.0	0.0	0.0	0.0	0.00	0.00	0.00
40.0	0.00	0.00	40.0	0.0	0.0	0.0	0.00	0.00	0.00
80.0	0.00	0.00	80.0	0.0	0.0	0.0	0.00	0.00	0.00
120.0	0.00	0.00	120.0	0.0	0.0	0.0	0.00	0.00	0.00
160.0	0.00	0.00	160.0	0.0	0.0	0.0	0.00	0.00	0.00
200.0	0.00	0.00	200.0	0.0	0.0	0.0	0.00	0.00	0.00
240.0	0.00	0.00	240.0	0.0	0.0	0.0	0.00	0.00	0.00
280.0	0.00	0.00	280.0	0.0	0.0	0.0	0.00	0.00	0.00
320.0	0.00	0.00	320.0	0.0	0.0	0.0	0.00	0.00	0.00
360.0	0.00	0.00	360.0	0.0	0.0	0.0	0.00	0.00	0.00
400.0	0.00	0.00	400.0	0.0	0.0	0.0	0.00	0.00	0.00
440.0	0.00	0.00	440.0	0.0	0.0	0.0	0.00	0.00	0.00
480.0	0.00	0.00	480.0	0.0	0.0	0.0	0.00	0.00	0.00
520.0	0.00	0.00	520.0	0.0	0.0	0.0	0.00	0.00	0.00
560.0	0.00	0.00	560.0	0.0	0.0	0.0	0.00	0.00	0.00
600.0	0.00	0.00	600.0	0.0	0.0	0.0	0.00	0.00	0.00
625.0	0.00	0.00	625.0	0.0	0.0	0.0	0.00	0.00	0.00
8 5/8"									
640.0	0.00	0.00	640.0	0.0	0.0	0.0	0.00	0.00	0.00
680.0	0.00	0.00	680.0	0.0	0.0	0.0	0.00	0.00	0.00
720.0	0.00	0.00	720.0	0.0	0.0	0.0	0.00	0.00	0.00
760.0	0.00	0.00	760.0	0.0	0.0	0.0	0.00	0.00	0.00
800.0	0.00	0.00	800.0	0.0	0.0	0.0	0.00	0.00	0.00
840.0	0.80	122.40	840.0	-0.1	0.2	0.3	2.00	2.00	0.00
880.0	1.60	122.40	880.0	-0.6	0.9	1.1	2.00	2.00	0.00
920.0	2.40	122.40	920.0	-1.3	2.1	2.5	2.00	2.00	0.00
960.0	3.20	122.40	959.9	-2.4	3.8	4.5	2.00	2.00	0.00
1,000.0	4.00	122.40	999.8	-3.7	5.9	7.0	2.00	2.00	0.00
1,040.0	4.80	122.40	1,039.7	-5.4	8.5	10.0	2.00	2.00	0.00
1,080.0	5.60	122.40	1,079.6	-7.3	11.5	13.7	2.00	2.00	0.00
1,120.0	6.40	122.40	1,119.3	-9.6	15.1	17.9	2.00	2.00	0.00
1,160.0	7.20	122.40	1,159.1	-12.1	19.1	22.6	2.00	2.00	0.00
1,200.0	8.00	122.40	1,198.7	-14.9	23.5	27.9	2.00	2.00	0.00
1,240.0	8.80	122.40	1,238.3	-18.1	28.5	33.7	2.00	2.00	0.00
1,280.0	9.60	122.40	1,277.8	-21.5	33.9	40.1	2.00	2.00	0.00
1,320.0	10.40	122.40	1,317.1	-25.2	39.7	47.1	2.00	2.00	0.00
1,360.0	11.20	122.40	1,356.4	-29.2	46.1	54.6	2.00	2.00	0.00
1,400.0	12.00	122.40	1,395.6	-33.5	52.9	62.6	2.00	2.00	0.00
1,416.5	12.33	122.40	1,411.8	-35.4	55.8	66.1	2.00	2.00	0.00
1,440.0	12.33	122.40	1,434.7	-38.1	60.0	71.1	0.00	0.00	0.00
1,480.0	12.33	122.40	1,473.8	-42.7	67.2	79.6	0.00	0.00	0.00
1,520.0	12.33	122.40	1,512.9	-47.3	74.5	88.2	0.00	0.00	0.00
1,560.0	12.33	122.40	1,551.9	-51.8	81.7	96.7	0.00	0.00	0.00
1,600.0	12.33	122.40	1,591.0	-56.4	88.9	105.3	0.00	0.00	0.00
1,640.0	12.33	122.40	1,630.1	-61.0	96.1	113.8	0.00	0.00	0.00
1,680.0	12.33	122.40	1,669.2	-65.6	103.3	122.3	0.00	0.00	0.00
1,720.0	12.33	122.40	1,708.3	-70.1	110.5	130.9	0.00	0.00	0.00
1,760.0	12.33	122.40	1,747.3	-74.7	117.7	139.4	0.00	0.00	0.00
1,800.0	12.33	122.40	1,786.4	-79.3	124.9	148.0	0.00	0.00	0.00
1,840.0	12.33	122.40	1,825.5	-83.9	132.2	156.5	0.00	0.00	0.00
1,880.0	12.33	122.40	1,864.6	-88.4	139.4	165.1	0.00	0.00	0.00
1,920.0	12.33	122.40	1,903.6	-93.0	146.6	173.6	0.00	0.00	0.00
1,960.0	12.33	122.40	1,942.7	-97.6	153.8	182.1	0.00	0.00	0.00
2,000.0	12.33	122.40	1,981.8	-102.2	161.0	190.7	0.00	0.00	0.00

Database:	Landmark	Local Co-ordinate Reference:	Well Staley 10-7
Company:	Bayswater Exploration & Production, LLC	TVD Reference:	WELL @ 4836.0ft (Original Well Elev)
Project:	SEC.7-T6N-R67W	MD Reference:	WELL @ 4836.0ft (Original Well Elev)
Site:	Staley 10-7 Pad Sec.7-T6N-R67W	North Reference:	True
Well:	Staley 10-7	Survey Calculation Method:	Minimum Curvature
Wellbore:	Wellbore #1		
Design:	Plan #2 (11-04-13)		

Planned Survey									
Measured Depth (ft)	Inclination (°)	Azimuth (°)	Vertical Depth (ft)	+N/-S (ft)	+E/-W (ft)	Vertical Section (ft)	Dogleg Rate (°/100ft)	Build Rate (°/100ft)	Turn Rate (°/100ft)
2,040.0	12.33	122.40	2,020.9	-106.8	168.2	199.2	0.00	0.00	0.00
2,080.0	12.33	122.40	2,059.9	-111.3	175.4	207.8	0.00	0.00	0.00
2,120.0	12.33	122.40	2,099.0	-115.9	182.6	216.3	0.00	0.00	0.00
2,160.0	12.33	122.40	2,138.1	-120.5	189.8	224.9	0.00	0.00	0.00
2,200.0	12.33	122.40	2,177.2	-125.1	197.1	233.4	0.00	0.00	0.00
2,204.9	12.33	122.40	2,182.0	-125.6	197.9	234.4	0.00	0.00	0.00
Richards									
2,240.0	12.33	122.40	2,216.3	-129.6	204.3	241.9	0.00	0.00	0.00
2,280.0	12.33	122.40	2,255.3	-134.2	211.5	250.5	0.00	0.00	0.00
2,320.0	12.33	122.40	2,294.4	-138.8	218.7	259.0	0.00	0.00	0.00
2,360.0	12.33	122.40	2,333.5	-143.4	225.9	267.6	0.00	0.00	0.00
2,400.0	12.33	122.40	2,372.6	-147.9	233.1	276.1	0.00	0.00	0.00
2,440.0	12.33	122.40	2,411.6	-152.5	240.3	284.6	0.00	0.00	0.00
2,480.0	12.33	122.40	2,450.7	-157.1	247.5	293.2	0.00	0.00	0.00
2,520.0	12.33	122.40	2,489.8	-161.7	254.8	301.7	0.00	0.00	0.00
2,560.0	12.33	122.40	2,528.9	-166.3	262.0	310.3	0.00	0.00	0.00
2,600.0	12.33	122.40	2,568.0	-170.8	269.2	318.8	0.00	0.00	0.00
2,640.0	12.33	122.40	2,607.0	-175.4	276.4	327.4	0.00	0.00	0.00
2,680.0	12.33	122.40	2,646.1	-180.0	283.6	335.9	0.00	0.00	0.00
2,720.0	12.33	122.40	2,685.2	-184.6	290.8	344.4	0.00	0.00	0.00
2,760.0	12.33	122.40	2,724.3	-189.1	298.0	353.0	0.00	0.00	0.00
2,800.0	12.33	122.40	2,763.3	-193.7	305.2	361.5	0.00	0.00	0.00
2,840.0	12.33	122.40	2,802.4	-198.3	312.5	370.1	0.00	0.00	0.00
2,880.0	12.33	122.40	2,841.5	-202.9	319.7	378.6	0.00	0.00	0.00
2,920.0	12.33	122.40	2,880.6	-207.4	326.9	387.1	0.00	0.00	0.00
2,960.0	12.33	122.40	2,919.6	-212.0	334.1	395.7	0.00	0.00	0.00
3,000.0	12.33	122.40	2,958.7	-216.6	341.3	404.2	0.00	0.00	0.00
3,040.0	12.33	122.40	2,997.8	-221.2	348.5	412.8	0.00	0.00	0.00
3,080.0	12.33	122.40	3,036.9	-225.8	355.7	421.3	0.00	0.00	0.00
3,120.0	12.33	122.40	3,076.0	-230.3	362.9	429.9	0.00	0.00	0.00
3,160.0	12.33	122.40	3,115.0	-234.9	370.1	438.4	0.00	0.00	0.00
3,200.0	12.33	122.40	3,154.1	-239.5	377.4	446.9	0.00	0.00	0.00
3,240.0	12.33	122.40	3,193.2	-244.1	384.6	455.5	0.00	0.00	0.00
3,280.0	12.33	122.40	3,232.3	-248.6	391.8	464.0	0.00	0.00	0.00
3,320.0	12.33	122.40	3,271.3	-253.2	399.0	472.6	0.00	0.00	0.00
3,336.0	12.33	122.40	3,287.0	-255.0	401.9	476.0	0.00	0.00	0.00
Parkman									
3,360.0	12.33	122.40	3,310.4	-257.8	406.2	481.1	0.00	0.00	0.00
3,400.0	12.33	122.40	3,349.5	-262.4	413.4	489.6	0.00	0.00	0.00
3,440.0	12.33	122.40	3,388.6	-266.9	420.6	498.2	0.00	0.00	0.00
3,480.0	12.33	122.40	3,427.7	-271.5	427.8	506.7	0.00	0.00	0.00
3,520.0	12.33	122.40	3,466.7	-276.1	435.1	515.3	0.00	0.00	0.00
3,560.0	12.33	122.40	3,505.8	-280.7	442.3	523.8	0.00	0.00	0.00
3,600.0	12.33	122.40	3,544.9	-285.3	449.5	532.4	0.00	0.00	0.00
3,640.0	12.33	122.40	3,584.0	-289.8	456.7	540.9	0.00	0.00	0.00
3,680.0	12.33	122.40	3,623.0	-294.4	463.9	549.4	0.00	0.00	0.00
3,720.0	12.33	122.40	3,662.1	-299.0	471.1	558.0	0.00	0.00	0.00
3,760.0	12.33	122.40	3,701.2	-303.6	478.3	566.5	0.00	0.00	0.00
3,800.0	12.33	122.40	3,740.3	-308.1	485.5	575.1	0.00	0.00	0.00
3,840.0	12.33	122.40	3,779.3	-312.7	492.8	583.6	0.00	0.00	0.00
3,880.0	12.33	122.40	3,818.4	-317.3	500.0	592.1	0.00	0.00	0.00
3,920.0	12.33	122.40	3,857.5	-321.9	507.2	600.7	0.00	0.00	0.00
3,960.0	12.33	122.40	3,896.6	-326.4	514.4	609.2	0.00	0.00	0.00
4,000.0	12.33	122.40	3,935.7	-331.0	521.6	617.8	0.00	0.00	0.00

Database:	Landmark	Local Co-ordinate Reference:	Well Staley 10-7
Company:	Bayswater Exploration & Production, LLC	TVD Reference:	WELL @ 4836.0ft (Original Well Elev)
Project:	SEC.7-T6N-R67W	MD Reference:	WELL @ 4836.0ft (Original Well Elev)
Site:	Staley 10-7 Pad Sec.7-T6N-R67W	North Reference:	True
Well:	Staley 10-7	Survey Calculation Method:	Minimum Curvature
Wellbore:	Wellbore #1		
Design:	Plan #2 (11-04-13)		

Planned Survey									
Measured Depth (ft)	Inclination (°)	Azimuth (°)	Vertical Depth (ft)	+N/-S (ft)	+E/-W (ft)	Vertical Section (ft)	Dogleg Rate (°/100ft)	Build Rate (°/100ft)	Turn Rate (°/100ft)
4,040.0	12.33	122.40	3,974.7	-335.6	528.8	626.3	0.00	0.00	0.00
4,080.0	12.33	122.40	4,013.8	-340.2	536.0	634.9	0.00	0.00	0.00
4,120.0	12.33	122.40	4,052.9	-344.8	543.2	643.4	0.00	0.00	0.00
4,160.0	12.33	122.40	4,092.0	-349.3	550.5	651.9	0.00	0.00	0.00
4,200.0	12.33	122.40	4,131.0	-353.9	557.7	660.5	0.00	0.00	0.00
4,240.0	12.33	122.40	4,170.1	-358.5	564.9	669.0	0.00	0.00	0.00
4,280.0	12.33	122.40	4,209.2	-363.1	572.1	677.6	0.00	0.00	0.00
4,320.0	12.33	122.40	4,248.3	-367.6	579.3	686.1	0.00	0.00	0.00
4,360.0	12.33	122.40	4,287.4	-372.2	586.5	694.7	0.00	0.00	0.00
4,400.0	12.33	122.40	4,326.4	-376.8	593.7	703.2	0.00	0.00	0.00
4,440.0	12.33	122.40	4,365.5	-381.4	600.9	711.7	0.00	0.00	0.00
4,462.0	12.33	122.40	4,387.0	-383.9	604.9	716.4	0.00	0.00	0.00
Sussex									
4,480.0	12.33	122.40	4,404.6	-385.9	608.1	720.3	0.00	0.00	0.00
4,520.0	12.33	122.40	4,443.7	-390.5	615.4	728.8	0.00	0.00	0.00
4,560.0	12.33	122.40	4,482.7	-395.1	622.6	737.4	0.00	0.00	0.00
4,600.0	12.33	122.40	4,521.8	-399.7	629.8	745.9	0.00	0.00	0.00
4,640.0	12.33	122.40	4,560.9	-404.3	637.0	754.4	0.00	0.00	0.00
4,680.0	12.33	122.40	4,600.0	-408.8	644.2	763.0	0.00	0.00	0.00
4,720.0	12.33	122.40	4,639.1	-413.4	651.4	771.5	0.00	0.00	0.00
4,760.0	12.33	122.40	4,678.1	-418.0	658.6	780.1	0.00	0.00	0.00
4,800.0	12.33	122.40	4,717.2	-422.6	665.8	788.6	0.00	0.00	0.00
4,840.0	12.33	122.40	4,756.3	-427.1	673.1	797.2	0.00	0.00	0.00
4,880.0	12.33	122.40	4,795.4	-431.7	680.3	805.7	0.00	0.00	0.00
4,920.0	12.33	122.40	4,834.4	-436.3	687.5	814.2	0.00	0.00	0.00
4,960.0	12.33	122.40	4,873.5	-440.9	694.7	822.8	0.00	0.00	0.00
4,968.7	12.33	122.40	4,882.0	-441.9	696.3	824.6	0.00	0.00	0.00
Shannon									
5,000.0	12.33	122.40	4,912.6	-445.4	701.9	831.3	0.00	0.00	0.00
5,040.0	12.33	122.40	4,951.7	-450.0	709.1	839.9	0.00	0.00	0.00
5,080.0	12.33	122.40	4,990.7	-454.6	716.3	848.4	0.00	0.00	0.00
5,120.0	12.33	122.40	5,029.8	-459.2	723.5	856.9	0.00	0.00	0.00
5,160.0	12.33	122.40	5,068.9	-463.8	730.8	865.5	0.00	0.00	0.00
5,179.8	12.33	122.40	5,088.2	-466.0	734.3	869.7	0.00	0.00	0.00
5,200.0	11.93	122.40	5,108.0	-468.3	737.9	874.0	2.00	-2.00	0.00
5,240.0	11.13	122.40	5,147.2	-472.6	744.7	882.0	2.00	-2.00	0.00
5,280.0	10.33	122.40	5,186.5	-476.6	750.9	889.4	2.00	-2.00	0.00
5,320.0	9.53	122.40	5,225.9	-480.3	756.8	896.3	2.00	-2.00	0.00
5,360.0	8.73	122.40	5,265.4	-483.7	762.1	902.6	2.00	-2.00	0.00
5,400.0	7.93	122.40	5,305.0	-486.8	767.0	908.4	2.00	-2.00	0.00
5,440.0	7.13	122.40	5,344.6	-489.6	771.4	913.7	2.00	-2.00	0.00
5,480.0	6.33	122.40	5,384.3	-492.1	775.4	918.4	2.00	-2.00	0.00
5,520.0	5.53	122.40	5,424.1	-494.3	778.9	922.5	2.00	-2.00	0.00
5,560.0	4.73	122.40	5,464.0	-496.2	781.9	926.1	2.00	-2.00	0.00
5,600.0	3.93	122.40	5,503.9	-497.8	784.4	929.1	2.00	-2.00	0.00
5,640.0	3.13	122.40	5,543.8	-499.1	786.5	931.5	2.00	-2.00	0.00
5,680.0	2.33	122.40	5,583.7	-500.2	788.1	933.4	2.00	-2.00	0.00
5,720.0	1.53	122.40	5,623.7	-500.9	789.3	934.8	2.00	-2.00	0.00
5,760.0	0.73	122.40	5,663.7	-501.3	789.9	935.6	2.00	-2.00	0.00
5,796.3	0.00	0.00	5,700.0	-501.4	790.1	935.8	2.00	-2.00	-337.17
TARGET BHL 1982°FSL, 1856°FEL									
5,800.0	0.00	0.00	5,703.7	-501.4	790.1	935.8	0.00	0.00	0.00
5,840.0	0.00	0.00	5,743.7	-501.4	790.1	935.8	0.00	0.00	0.00

Database:	Landmark	Local Co-ordinate Reference:	Well Staley 10-7
Company:	Bayswater Exploration & Production, LLC	TVD Reference:	WELL @ 4836.0ft (Original Well Elev)
Project:	SEC.7-T6N-R67W	MD Reference:	WELL @ 4836.0ft (Original Well Elev)
Site:	Staley 10-7 Pad Sec.7-T6N-R67W	North Reference:	True
Well:	Staley 10-7	Survey Calculation Method:	Minimum Curvature
Wellbore:	Wellbore #1		
Design:	Plan #2 (11-04-13)		

Planned Survey									
Measured Depth (ft)	Inclination (°)	Azimuth (°)	Vertical Depth (ft)	+N/-S (ft)	+E/-W (ft)	Vertical Section (ft)	Dogleg Rate (°/100ft)	Build Rate (°/100ft)	Turn Rate (°/100ft)
5,880.0	0.00	0.00	5,783.7	-501.4	790.1	935.8	0.00	0.00	0.00
5,920.0	0.00	0.00	5,823.7	-501.4	790.1	935.8	0.00	0.00	0.00
5,960.0	0.00	0.00	5,863.7	-501.4	790.1	935.8	0.00	0.00	0.00
6,000.0	0.00	0.00	5,903.7	-501.4	790.1	935.8	0.00	0.00	0.00
6,040.0	0.00	0.00	5,943.7	-501.4	790.1	935.8	0.00	0.00	0.00
6,080.0	0.00	0.00	5,983.7	-501.4	790.1	935.8	0.00	0.00	0.00
6,120.0	0.00	0.00	6,023.7	-501.4	790.1	935.8	0.00	0.00	0.00
6,160.0	0.00	0.00	6,063.7	-501.4	790.1	935.8	0.00	0.00	0.00
6,200.0	0.00	0.00	6,103.7	-501.4	790.1	935.8	0.00	0.00	0.00
6,240.0	0.00	0.00	6,143.7	-501.4	790.1	935.8	0.00	0.00	0.00
6,280.0	0.00	0.00	6,183.7	-501.4	790.1	935.8	0.00	0.00	0.00
6,320.0	0.00	0.00	6,223.7	-501.4	790.1	935.8	0.00	0.00	0.00
6,360.0	0.00	0.00	6,263.7	-501.4	790.1	935.8	0.00	0.00	0.00
6,400.0	0.00	0.00	6,303.7	-501.4	790.1	935.8	0.00	0.00	0.00
6,440.0	0.00	0.00	6,343.7	-501.4	790.1	935.8	0.00	0.00	0.00
6,480.0	0.00	0.00	6,383.7	-501.4	790.1	935.8	0.00	0.00	0.00
6,520.0	0.00	0.00	6,423.7	-501.4	790.1	935.8	0.00	0.00	0.00
6,560.0	0.00	0.00	6,463.7	-501.4	790.1	935.8	0.00	0.00	0.00
6,600.0	0.00	0.00	6,503.7	-501.4	790.1	935.8	0.00	0.00	0.00
6,640.0	0.00	0.00	6,543.7	-501.4	790.1	935.8	0.00	0.00	0.00
6,680.0	0.00	0.00	6,583.7	-501.4	790.1	935.8	0.00	0.00	0.00
6,720.0	0.00	0.00	6,623.7	-501.4	790.1	935.8	0.00	0.00	0.00
6,760.0	0.00	0.00	6,663.7	-501.4	790.1	935.8	0.00	0.00	0.00
6,781.3	0.00	0.00	6,685.0	-501.4	790.1	935.8	0.00	0.00	0.00
Niobrara - LEGAL BOX 400 X 400 1983'FSL, 1852'FEL - TARGET CIRCLE 1982'FSL, 1856'FEL									
6,800.0	0.00	0.00	6,703.7	-501.4	790.1	935.8	0.00	0.00	0.00
6,840.0	0.00	0.00	6,743.7	-501.4	790.1	935.8	0.00	0.00	0.00
6,880.0	0.00	0.00	6,783.7	-501.4	790.1	935.8	0.00	0.00	0.00
6,920.0	0.00	0.00	6,823.7	-501.4	790.1	935.8	0.00	0.00	0.00
6,960.0	0.00	0.00	6,863.7	-501.4	790.1	935.8	0.00	0.00	0.00
7,000.0	0.00	0.00	6,903.7	-501.4	790.1	935.8	0.00	0.00	0.00
7,040.0	0.00	0.00	6,943.7	-501.4	790.1	935.8	0.00	0.00	0.00
7,063.3	0.00	0.00	6,967.0	-501.4	790.1	935.8	0.00	0.00	0.00
Fort Hays									
7,080.0	0.00	0.00	6,983.7	-501.4	790.1	935.8	0.00	0.00	0.00
7,097.3	0.00	0.00	7,001.0	-501.4	790.1	935.8	0.00	0.00	0.00
Codell									
7,120.0	0.00	0.00	7,023.7	-501.4	790.1	935.8	0.00	0.00	0.00
7,145.3	0.00	0.00	7,049.0	-501.4	790.1	935.8	0.00	0.00	0.00
Greenhorn									
7,160.0	0.00	0.00	7,063.7	-501.4	790.1	935.8	0.00	0.00	0.00
7,200.0	0.00	0.00	7,103.7	-501.4	790.1	935.8	0.00	0.00	0.00
7,229.3	0.00	0.00	7,133.0	-501.4	790.1	935.8	0.00	0.00	0.00
Graneros									
7,240.0	0.00	0.00	7,143.7	-501.4	790.1	935.8	0.00	0.00	0.00
7,246.3	0.00	0.00	7,150.0	-501.4	790.1	935.8	0.00	0.00	0.00

Database:	Landmark	Local Co-ordinate Reference:	Well Staley 10-7
Company:	Bayswater Exploration & Production, LLC	TVD Reference:	WELL @ 4836.0ft (Original Well Elev)
Project:	SEC.7-T6N-R67W	MD Reference:	WELL @ 4836.0ft (Original Well Elev)
Site:	Staley 10-7 Pad Sec.7-T6N-R67W	North Reference:	True
Well:	Staley 10-7	Survey Calculation Method:	Minimum Curvature
Wellbore:	Wellbore #1		
Design:	Plan #2 (11-04-13)		

Targets									
Target Name									
- hit/miss target	Dip Angle	Dip Dir.	TVD	+N/-S	+E/-W	Northing	Easting	Latitude	Longitude
- Shape	(°)	(°)	(ft)	(ft)	(ft)	(ft)	(ft)		
TARGET BHL 1982'F: - plan hits target center - Point	0.00	0.00	5,700.0	-501.4	790.1	1,425,241.03	3,157,620.41	40.499305	-104.933225
LEGAL BOX 400 X 400 - plan misses target center by 4.1ft at 6781.3ft MD (6685.0 TVD, -501.4 N, 790.1 E) - Rectangle (sides W400.0 H400.0 D465.0)	0.00	0.00	6,685.0	-500.4	794.1	1,425,242.08	3,157,624.38	40.499308	-104.933211
TARGET CIRCLE 1982'F: - plan hits target center - Circle (radius 100.0)	0.00	0.00	6,685.0	-501.4	790.1	1,425,241.03	3,157,620.41	40.499305	-104.933225

Casing Points				
Measured Depth (ft)	Vertical Depth (ft)	Name	Casing Diameter (")	Hole Diameter (")
625.0	625.0	8 5/8"	8-5/8	12-1/4

Formations						
Measured Depth (ft)	Vertical Depth (ft)	Name	Lithology	Dip (°)	Dip Direction (°)	
2,204.9	2,182.0	Richards				
3,336.0	3,287.0	Parkman				
4,462.0	4,387.0	Sussex				
4,968.7	4,882.0	Shannon				
6,781.3	6,685.0	Niobrara				
7,063.3	6,967.0	Fort Hays				
7,097.3	7,001.0	Codell				
7,145.3	7,049.0	Greenhorn				
7,229.3	7,133.0	Graneros				



Directional

Bayswater Exploration & Production, LLC

SEC.7-T6N-R67W

Staley 10-7 Pad Sec.7-T6N-R67W

Staley 10-7

Wellbore #1

Plan #2 (11-04-13)

Anticollision Report

04 November, 2013



Directional

Company:	Bayswater Exploration & Production, LLC	Local Co-ordinate Reference:	Well Staley 10-7
Project:	SEC.7-T6N-R67W	TVD Reference:	WELL @ 4836.0ft (Original Well Elev)
Reference Site:	Staley 10-7 Pad Sec.7-T6N-R67W	MD Reference:	WELL @ 4836.0ft (Original Well Elev)
Site Error:	0.0ft	North Reference:	True
Reference Well:	Staley 10-7	Survey Calculation Method:	Minimum Curvature
Well Error:	0.0ft	Output errors are at	2.00 sigma
Reference Wellbore	Wellbore #1	Database:	Landmark
Reference Design:	Plan #2 (11-04-13)	Offset TVD Reference:	Offset Datum

Reference	Plan #2 (11-04-13)		
Filter type:	NO GLOBAL FILTER: Using user defined selection & filtering criteria		
Interpolation Method:	Stations	Error Model:	ISCWSA
Depth Range:	Unlimited	Scan Method:	Closest Approach 3D
Results Limited by:	Maximum center-center distance of 1,000.0ft	Error Surface:	Elliptical Conic
Warning Levels Evaluated at:	2.00 Sigma		

Survey Tool Program	Date 11/4/2013			
From (ft)	To (ft)	Survey (Wellbore)	Tool Name	Description
0.0	7,246.3	Plan #2 (11-04-13) (Wellbore #1)	MWD	MWD - Standard

Summary						
Site Name	Reference Measured Depth (ft)	Offset Measured Depth (ft)	Distance Between Centres (ft)	Distance Between Ellipses (ft)	Separation Factor	Warning
Offset Well - Wellbore - Design						
Staley 10-7 Pad Sec.7-T6N-R67W						
Staley 25-7 (Vert) - Wellbore #1 - Plan #2 (11-04-13)	800.0	800.0	15.3	11.9	4.538	CC, ES
Staley 25-7 (Vert) - Wellbore #1 - Plan #2 (11-04-13)	900.0	900.0	16.3	12.5	4.289	SF

Offset Design Staley 10-7 Pad Sec.7-T6N-R67W - Staley 25-7 (Vert) - Wellbore #1 - Plan #2 (11-04-13)												Offset Site Error:	0.0 ft
Survey Program: 0-MWD												Offset Well Error:	0.0 ft
Reference		Offset		Semi Major Axis			Distance						Warning
Measured Depth (ft)	Vertical Depth (ft)	Measured Depth (ft)	Vertical Depth (ft)	Reference (ft)	Offset (ft)	Highside Toolface (°)	Offset Wellbore Centre +N/-S (ft)	+E/-W (ft)	Between Centres (ft)	Between Ellipses (ft)	Minimum Separation (ft)	Separation Factor	
0.0	0.0	0.0	0.0	0.0	0.0	0.00	15.3	0.0	15.3	15.3	0.00	N/A	
100.0	100.0	100.0	100.0	0.1	0.1	0.00	15.3	0.0	15.3	15.1	0.22	68.071	
200.0	200.0	200.0	200.0	0.3	0.3	0.00	15.3	0.0	15.3	14.6	0.67	22.690	
300.0	300.0	300.0	300.0	0.6	0.6	0.00	15.3	0.0	15.3	14.2	1.12	13.614	
400.0	400.0	400.0	400.0	0.8	0.8	0.00	15.3	0.0	15.3	13.7	1.57	9.724	
500.0	500.0	500.0	500.0	1.0	1.0	0.00	15.3	0.0	15.3	13.3	2.02	7.563	
600.0	600.0	600.0	600.0	1.2	1.2	0.00	15.3	0.0	15.3	12.8	2.47	6.188	
700.0	700.0	700.0	700.0	1.5	1.5	0.00	15.3	0.0	15.3	12.4	2.92	5.236	
800.0	800.0	800.0	800.0	1.7	1.7	0.00	15.3	0.0	15.3	11.9	3.37	4.538 CC, ES	
900.0	900.0	900.0	900.0	1.9	1.9	-127.57	15.3	0.0	16.3	12.5	3.80	4.289 SF	
1,000.0	999.8	999.8	999.8	2.1	2.1	-139.53	15.3	0.0	19.9	15.7	4.22	4.728	
1,100.0	1,099.5	1,099.5	1,099.5	2.3	2.4	-151.47	15.3	0.0	27.2	22.5	4.63	5.860	
1,200.0	1,198.7	1,198.7	1,198.7	2.5	2.6	-160.12	15.3	0.0	38.3	33.3	5.05	7.584	
1,300.0	1,297.5	1,297.5	1,297.5	2.8	2.8	-165.77	15.3	0.0	53.3	47.8	5.47	9.746	
1,400.0	1,395.6	1,395.6	1,395.6	3.1	3.0	-169.43	15.3	0.0	72.0	66.1	5.89	12.228	
1,416.5	1,411.8	1,411.8	1,411.8	3.2	3.1	-169.91	15.3	0.0	75.4	69.4	5.95	12.663	
1,500.0	1,493.3	1,493.3	1,493.3	3.5	3.2	-171.83	15.3	0.0	93.0	86.7	6.32	14.711	
1,600.0	1,591.0	1,591.0	1,591.0	3.9	3.5	-173.35	15.3	0.0	114.2	107.4	6.77	16.869	
1,700.0	1,688.7	1,688.7	1,688.7	4.3	3.7	-174.40	15.3	0.0	135.4	128.2	7.22	18.752	
1,800.0	1,786.4	1,786.4	1,786.4	4.7	3.9	-175.16	15.3	0.0	156.7	149.0	7.68	20.406	
1,900.0	1,884.1	1,884.1	1,884.1	5.2	4.1	-175.74	15.3	0.0	178.0	169.9	8.14	21.866	
2,000.0	1,981.8	1,981.8	1,981.8	5.6	4.3	-176.20	15.3	0.0	199.3	190.7	8.60	23.164	
2,100.0	2,079.5	2,079.5	2,079.5	6.0	4.6	-176.56	15.3	0.0	220.6	211.5	9.07	24.322	
2,200.0	2,177.2	2,177.2	2,177.2	6.5	4.8	-176.87	15.3	0.0	241.9	232.4	9.54	25.363	
2,300.0	2,274.9	2,274.9	2,274.9	7.0	5.0	-177.12	15.3	0.0	263.3	253.3	10.01	26.302	

CC - Min centre to center distance or convergent point, SF - min separation factor, ES - min ellipse separation

Company:	Bayswater Exploration & Production, LLC	Local Co-ordinate Reference:	Well Staley 10-7
Project:	SEC.7-T6N-R67W	TVD Reference:	WELL @ 4836.0ft (Original Well Elev)
Reference Site:	Staley 10-7 Pad Sec.7-T6N-R67W	MD Reference:	WELL @ 4836.0ft (Original Well Elev)
Site Error:	0.0ft	North Reference:	True
Reference Well:	Staley 10-7	Survey Calculation Method:	Minimum Curvature
Well Error:	0.0ft	Output errors are at	2.00 sigma
Reference Wellbore	Wellbore #1	Database:	Landmark
Reference Design:	Plan #2 (11-04-13)	Offset TVD Reference:	Offset Datum

Offset Design													Offset Site Error:	0.0 ft
Survey Program: 0-MWD													Offset Well Error:	0.0 ft
Reference		Offset		Semi Major Axis			Distance							Warning
Measured Depth (ft)	Vertical Depth (ft)	Measured Depth (ft)	Vertical Depth (ft)	Reference (ft)	Offset (ft)	Highside Toolface (°)	Offset Wellbore Centre +N/-S (ft)	+E/-W (ft)	Between Centres (ft)	Between Ellipses (ft)	Minimum Separation (ft)	Separation Factor		
2,400.0	2,372.6	2,372.6	2,372.6	7.4	5.2	-177.34	15.3	0.0	284.6	274.1	10.48	27.153		
2,500.0	2,470.3	2,470.3	2,470.3	7.9	5.4	-177.52	15.3	0.0	305.9	295.0	10.95	27.927		
2,600.0	2,568.0	2,568.0	2,568.0	8.3	5.7	-177.68	15.3	0.0	327.3	315.8	11.43	28.634		
2,700.0	2,665.6	2,665.6	2,665.6	8.8	5.9	-177.83	15.3	0.0	348.6	336.7	11.90	29.283		
2,800.0	2,763.3	2,763.3	2,763.3	9.3	6.1	-177.95	15.3	0.0	369.9	357.6	12.38	29.880		
2,900.0	2,861.0	2,861.0	2,861.0	9.7	6.3	-178.06	15.3	0.0	391.3	378.4	12.86	30.430		
3,000.0	2,958.7	2,958.7	2,958.7	10.2	6.5	-178.16	15.3	0.0	412.6	399.3	13.34	30.940		
3,100.0	3,056.4	3,056.4	3,056.4	10.7	6.8	-178.25	15.3	0.0	434.0	420.2	13.82	31.413		
3,200.0	3,154.1	3,154.1	3,154.1	11.1	7.0	-178.34	15.3	0.0	455.3	441.0	14.29	31.853		
3,300.0	3,251.8	3,251.8	3,251.8	11.6	7.2	-178.41	15.3	0.0	476.7	461.9	14.77	32.263		
3,400.0	3,349.5	3,349.5	3,349.5	12.1	7.4	-178.48	15.3	0.0	498.0	482.8	15.25	32.647		
3,500.0	3,447.2	3,447.2	3,447.2	12.5	7.6	-178.54	15.3	0.0	519.4	503.6	15.74	33.006		
3,600.0	3,544.9	3,544.9	3,544.9	13.0	7.9	-178.60	15.3	0.0	540.7	524.5	16.22	33.343		
3,700.0	3,642.6	3,642.6	3,642.6	13.5	8.1	-178.65	15.3	0.0	562.1	545.4	16.70	33.660		
3,800.0	3,740.3	3,740.3	3,740.3	13.9	8.3	-178.70	15.3	0.0	583.4	566.2	17.18	33.958		
3,900.0	3,838.0	3,838.0	3,838.0	14.4	8.5	-178.75	15.3	0.0	604.8	587.1	17.66	34.240		
4,000.0	3,935.7	3,935.7	3,935.7	14.9	8.7	-178.79	15.3	0.0	626.1	608.0	18.14	34.506		
4,100.0	4,033.4	4,033.4	4,033.4	15.4	9.0	-178.83	15.3	0.0	647.5	628.8	18.63	34.758		
4,200.0	4,131.0	4,131.0	4,131.0	15.8	9.2	-178.87	15.3	0.0	668.8	649.7	19.11	34.996		
4,300.0	4,228.7	4,228.7	4,228.7	16.3	9.4	-178.90	15.3	0.0	690.2	670.6	19.59	35.223		
4,400.0	4,326.4	4,326.4	4,326.4	16.8	9.6	-178.94	15.3	0.0	711.5	691.4	20.08	35.438		
4,500.0	4,424.1	4,424.1	4,424.1	17.2	9.8	-178.97	15.3	0.0	732.9	712.3	20.56	35.643		
4,600.0	4,521.8	4,521.8	4,521.8	17.7	10.1	-179.00	15.3	0.0	754.2	733.2	21.05	35.838		
4,700.0	4,619.5	4,619.5	4,619.5	18.2	10.3	-179.02	15.3	0.0	775.6	754.0	21.53	36.023		
4,800.0	4,717.2	4,717.2	4,717.2	18.7	10.5	-179.05	15.3	0.0	796.9	774.9	22.01	36.201		
4,900.0	4,814.9	4,814.9	4,814.9	19.1	10.7	-179.07	15.3	0.0	818.3	795.8	22.50	36.370		
5,000.0	4,912.6	4,912.6	4,912.6	19.6	10.9	-179.10	15.3	0.0	839.6	816.6	22.98	36.532		
5,100.0	5,010.3	5,010.3	5,010.3	20.1	11.1	-179.12	15.3	0.0	861.0	837.5	23.47	36.687		
5,179.8	5,088.2	5,088.2	5,088.2	20.5	11.3	-179.14	15.3	0.0	878.0	854.2	23.85	36.806		
5,200.0	5,108.0	5,108.0	5,108.0	20.5	11.4	-179.14	15.3	0.0	882.3	858.3	23.96	36.814		
5,300.0	5,206.2	5,206.2	5,206.2	20.9	11.6	-179.17	15.3	0.0	901.2	876.7	24.47	36.827		
5,400.0	5,305.0	5,305.0	5,305.0	21.2	11.8	-179.18	15.3	0.0	916.7	891.8	24.94	36.750		
5,500.0	5,404.2	5,404.2	5,404.2	21.4	12.0	-179.20	15.3	0.0	928.8	903.4	25.38	36.588		
5,600.0	5,503.9	5,503.9	5,503.9	21.6	12.3	-179.21	15.3	0.0	937.4	911.6	25.79	36.348		
5,700.0	5,603.7	5,603.7	5,603.7	21.7	12.5	-179.21	15.3	0.0	942.5	916.3	26.16	36.031		
5,796.3	5,700.0	5,700.0	5,700.0	21.9	12.7	-56.82	15.3	0.0	944.1	917.6	26.49	35.644		
5,800.0	5,703.7	5,703.7	5,703.7	21.9	12.7	-56.82	15.3	0.0	944.1	917.6	26.50	35.625		
5,900.0	5,803.7	5,803.7	5,803.7	22.0	12.9	-56.82	15.3	0.0	944.1	917.2	26.90	35.099		
6,000.0	5,903.7	5,903.7	5,903.7	22.1	13.2	-56.82	15.3	0.0	944.1	916.8	27.30	34.587		
6,100.0	6,003.7	6,003.7	6,003.7	22.2	13.4	-56.82	15.3	0.0	944.1	916.4	27.70	34.088		
6,200.0	6,103.7	6,103.7	6,103.7	22.3	13.6	-56.82	15.3	0.0	944.1	916.0	28.10	33.601		
6,300.0	6,203.7	6,203.7	6,203.7	22.5	13.8	-56.82	15.3	0.0	944.1	915.6	28.50	33.127		
6,400.0	6,303.7	6,303.7	6,303.7	22.6	14.1	-56.82	15.3	0.0	944.1	915.2	28.90	32.664		
6,500.0	6,403.7	6,403.7	6,403.7	22.7	14.3	-56.82	15.3	0.0	944.1	914.8	29.31	32.213		
6,600.0	6,503.7	6,503.7	6,503.7	22.8	14.5	-56.82	15.3	0.0	944.1	914.4	29.71	31.773		
6,700.0	6,603.7	6,603.7	6,603.7	23.0	14.7	-56.82	15.3	0.0	944.1	914.0	30.12	31.343		
6,800.0	6,703.7	6,703.7	6,703.7	23.1	15.0	-56.82	15.3	0.0	944.1	913.6	30.53	30.924		
6,900.0	6,803.7	6,803.7	6,803.7	23.2	15.2	-56.82	15.3	0.0	944.1	913.1	30.94	30.515		
7,000.0	6,903.7	6,903.7	6,903.7	23.3	15.4	-56.82	15.3	0.0	944.1	912.7	31.35	30.116		
7,100.0	7,003.7	7,003.7	7,003.7	23.5	15.6	-56.82	15.3	0.0	944.1	912.3	31.76	29.726		
7,200.0	7,103.7	7,103.7	7,103.7	23.6	15.9	-56.82	15.3	0.0	944.1	911.9	32.17	29.345		
7,246.3	7,150.0	7,150.0	7,150.0	23.7	16.0	-56.82	15.3	0.0	944.1	911.7	32.36	29.171		

CC - Min centre to center distance or convergent point, SF - min separation factor, ES - min ellipse separation

Company:	Bayswater Exploration & Production, LLC	Local Co-ordinate Reference:	Well Staley 10-7
Project:	SEC.7-T6N-R67W	TVD Reference:	WELL @ 4836.0ft (Original Well Elev)
Reference Site:	Staley 10-7 Pad Sec.7-T6N-R67W	MD Reference:	WELL @ 4836.0ft (Original Well Elev)
Site Error:	0.0ft	North Reference:	True
Reference Well:	Staley 10-7	Survey Calculation Method:	Minimum Curvature
Well Error:	0.0ft	Output errors are at	2.00 sigma
Reference Wellbore	Wellbore #1	Database:	Landmark
Reference Design:	Plan #2 (11-04-13)	Offset TVD Reference:	Offset Datum

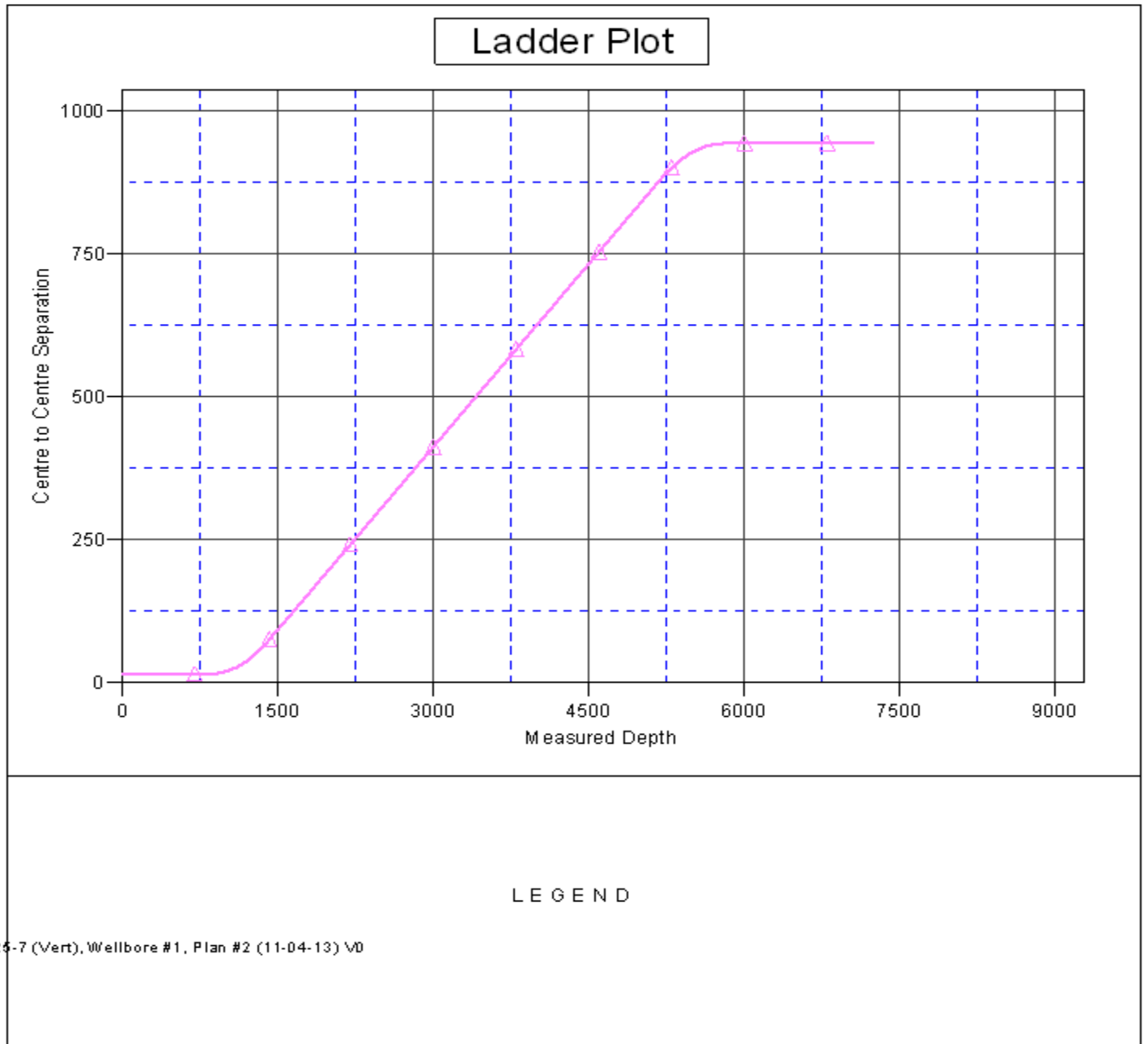
Reference Depths are relative to WELL @ 4836.0ft (Original Well Elev)Coordinates are relative to: Staley 10-7

Offset Depths are relative to Offset Datum

Coordinate System is US State Plane 1983, Colorado Northern Zone

Central Meridian is -105.500000 °

Grid Convergence at Surface is: 0.36°



Company:	Bayswater Exploration & Production, LLC	Local Co-ordinate Reference:	Well Staley 10-7
Project:	SEC.7-T6N-R67W	TVD Reference:	WELL @ 4836.0ft (Original Well Elev)
Reference Site:	Staley 10-7 Pad Sec.7-T6N-R67W	MD Reference:	WELL @ 4836.0ft (Original Well Elev)
Site Error:	0.0ft	North Reference:	True
Reference Well:	Staley 10-7	Survey Calculation Method:	Minimum Curvature
Well Error:	0.0ft	Output errors are at	2.00 sigma
Reference Wellbore	Wellbore #1	Database:	Landmark
Reference Design:	Plan #2 (11-04-13)	Offset TVD Reference:	Offset Datum

Reference Depths are relative to WELL @ 4836.0ft (Original Well Elev)Coordinates are relative to: Staley 10-7
Offset Depths are relative to Offset Datum Coordinate System is US State Plane 1983, Colorado Northern Zone
Central Meridian is -105.500000 ° Grid Convergence at Surface is: 0.36°

