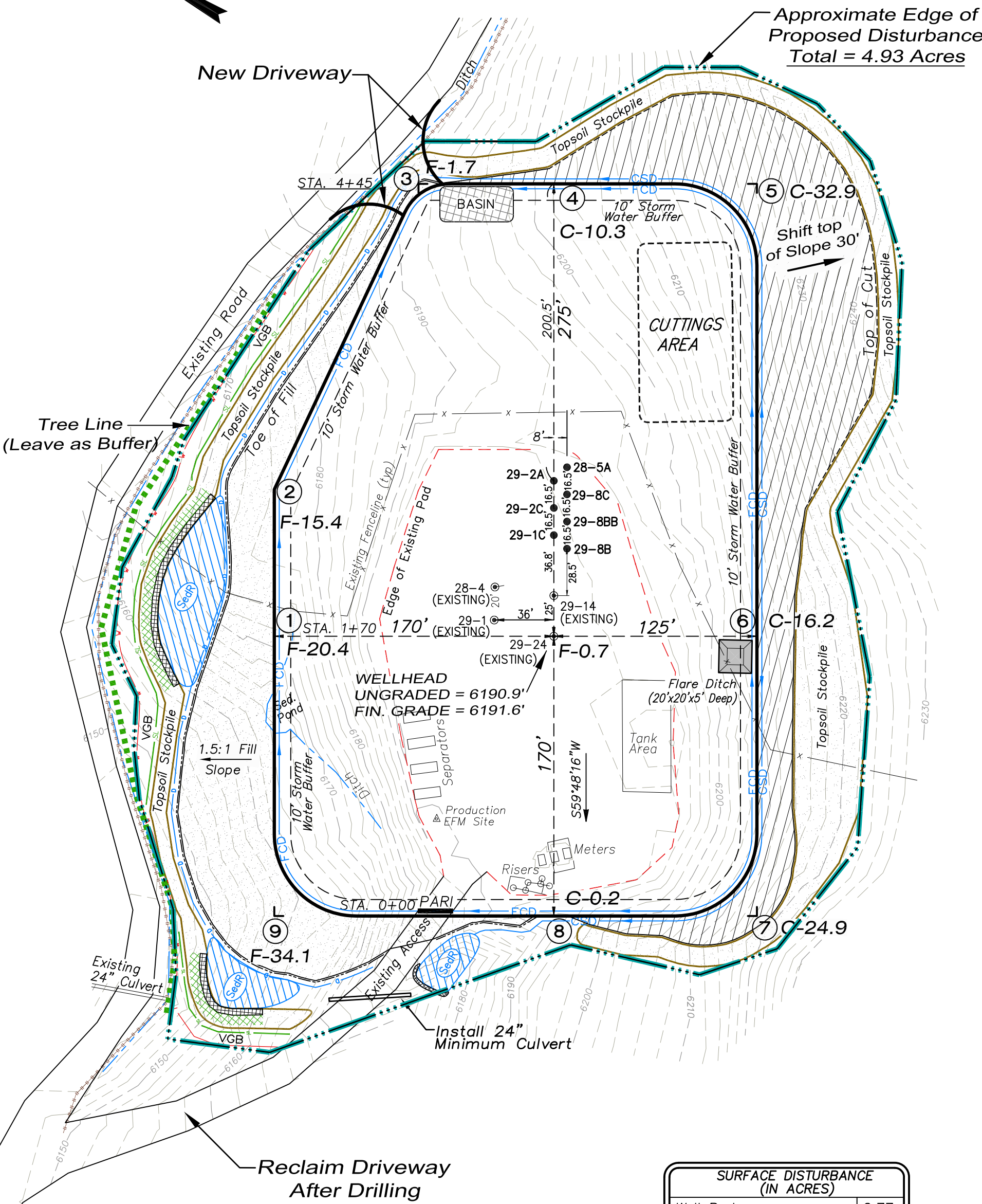


Encana Oil & Gas (USA) Inc.
PA-29 Well Pad

NE1/4 NE1/4, SECTION 29, T7S, R95W, 6th P.M.
WELL PAD LAYOUT



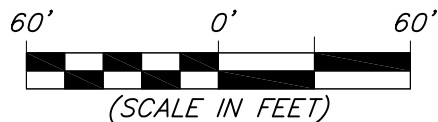
Approximate Edge of
Proposed Disturbance
Total = 4.93 Acres

Total Surface Disturbance = 4.93 Acres
(See Sheet 4 for Details)

- NOTES:
- (1) Slope Track and/or Terrace all Slopes and Piles
 - (2) Erosion Control & Seed Topsoil
 - (3) Erosion Control & Seed Outside
 - (4) Slope away from Substructure Areas 1% to 3% to Flow Control

- LEGEND
- SL = SLASH
 - ST = SEDIMENT TRAP
 - SedR = SEDIMENT RESERVOIR
 - R.O.D. = RUN-ON DIVERSION
 - W = PERIMETER CONTROL (WATTLES)
 - CSD = CUT SLOPE DIVERSION (BERM TOE OF CUT SLOPE)
 - D = FILL DIVERSION TO SEDIMENT TRAP
 - VCB = VEGETATION BUFFER (UNDISTURBED LAND INSIDE PC)
 - FCD = FLOW CONTROL DITCH
 - PARI = PAD/ACCESS ROAD INTERFACE
 - Level Spreader
 - Toe Berm (PLACED AT TOE OF ALL FILL SLOPES/STOCKPILES)
 - Topsoil Berm
 - SEED, ECB & FLEX
 - SEED

SURFACE DISTURBANCE (IN ACRES)	
Well Pad	2.77
Side Slopes	1.10
Topsoil & Waste Material	1.06
TOTAL	4.93



Well Pad Layout		Scale: 1" = 60'	SHEET 3 OF 10
Project No.	10-04-14	Date Surveyed: 12/12/11	
Date	11/28/11	Latest Revision	
Drawn:	11/28/11	Date: 11/06/13	



906 Main Street
Evanston, Wyoming 82930
Phone No. (307) 789-4545