

Project: Wattenberg Field
Site: E (Sec.23-T06N-R65W) Weld County, CO
Well: Reliance E23-66-1HC
Wellbore: Original Drilling
Design: APD - Rev 1

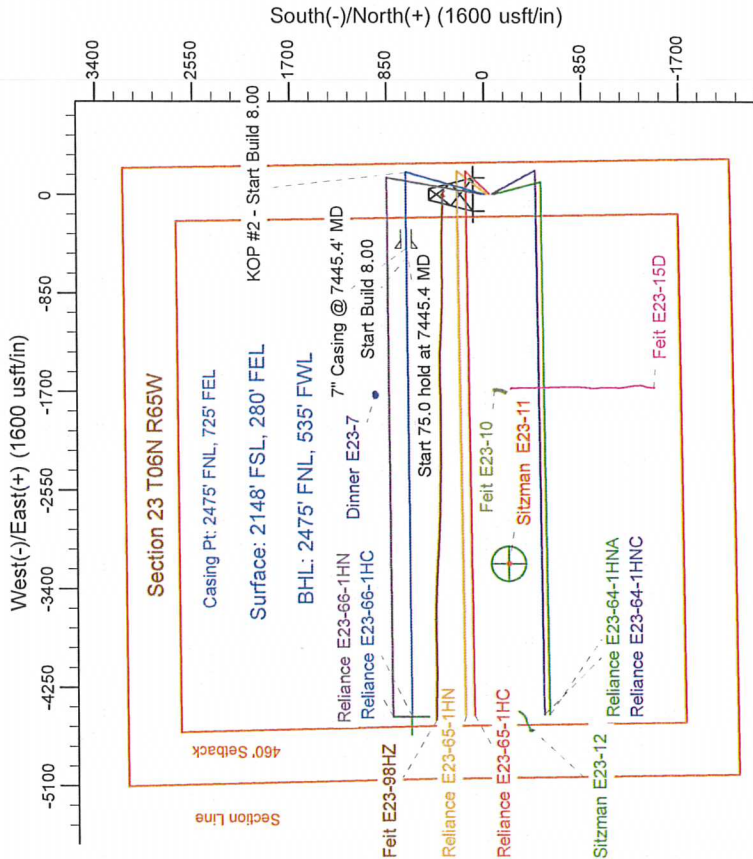
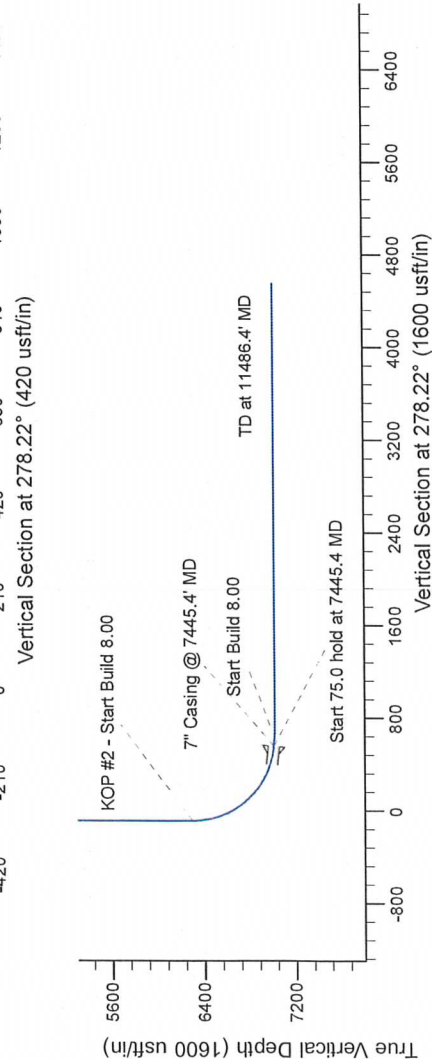
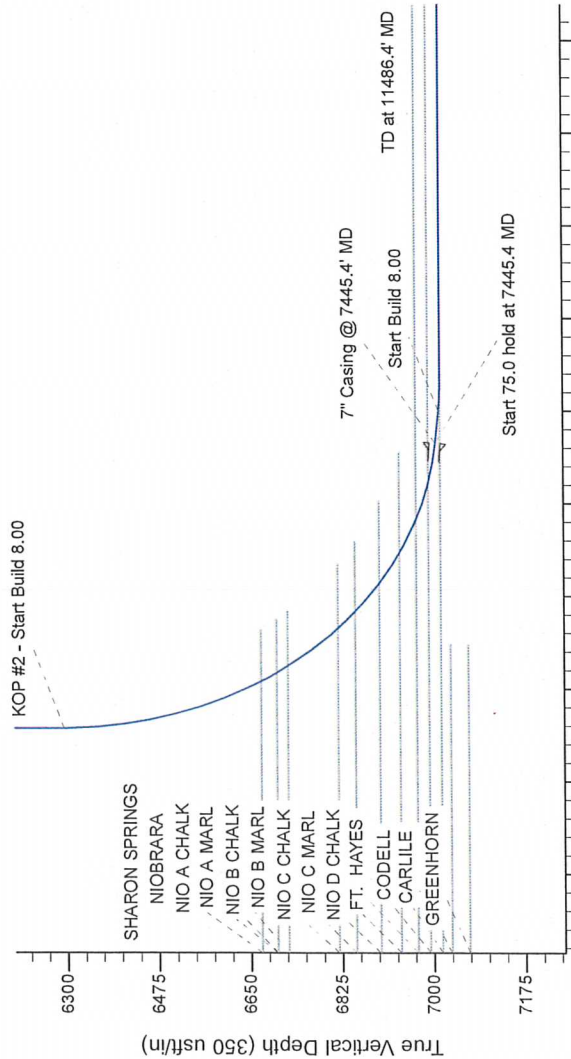
Northern Region Drilling - Working

Geodetic System: US State Plane 1983
Datum: North American Datum 1983
Ellipsoid: GRS 1980
Zone: Colorado Northern Zone
System Datum: Mean Sea Level

SECTION DETAILS

Sec	MD	Inc	Azi	TVD	+N/S	+E/W	Dleg	TFace	V/Sect	Target
1	0.0	0.00	0.00	0.0	0.0	0.0	0.00	0.00	0.0	0.0
2	1200.0	16.00	15.50	1200.5	107.5	29.8	2.00	15.50	-14.1	0.0
3	2007.9	16.04	15.50	3688.5	577.5	160.2	2.00	180.00	-76.0	0.0
4	2507.7	16.04	15.50	4480.0	665.0	190.0	2.00	269.58	-90.1	0.0
5	4556.6	0.00	0.00	6293.3	680.2	-463.8	8.00	630.1	556.2	0.0
6	6382.9	85.00	269.58	7006.7	679.2	-538.5	8.00	691.8	630.1	0.0
7	7445.4	85.00	269.58	7013.3	679.2	-538.5	8.00	691.8	630.1	0.0
8	7520.4	90.00	269.58	7016.0	650.6	-4504.4	0.00	0.00	4551.1	0.0
9	7582.9	90.00	269.58	7016.0	650.6	-4504.4	0.00	0.00	4551.1	0.0
10	11486.4	90.00	269.58	7016.0	650.6	-4504.4	0.00	0.00	4551.1	0.0

Reliance E23-66-1HC BHL 2475'FNL, 535'FWL



T G M

Azimuths to Grid North
True North: -0.57°
Magnetic North: 7.92°

Magnetic Field
Strength: 53008.4snT
Dip Angle: 67.07°
Date: 5/14/2013
Model: IGRF200510

WELL DETAILS: Reliance E23-66-1HC

	North	East	Ground Level	Longitude
0.0	0.0	1415307.55	3244316.98	-104.621850

Plan: APD - Rev 1 (Reliance E23-66-1HC/Original Drilling)

Created By: Shalley Jewell	Date: 13/27, October 10 2013
Checked:	Date:
Reviewed:	Date:
Approved:	Date: