

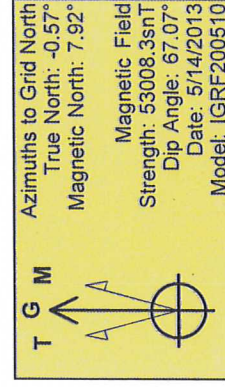
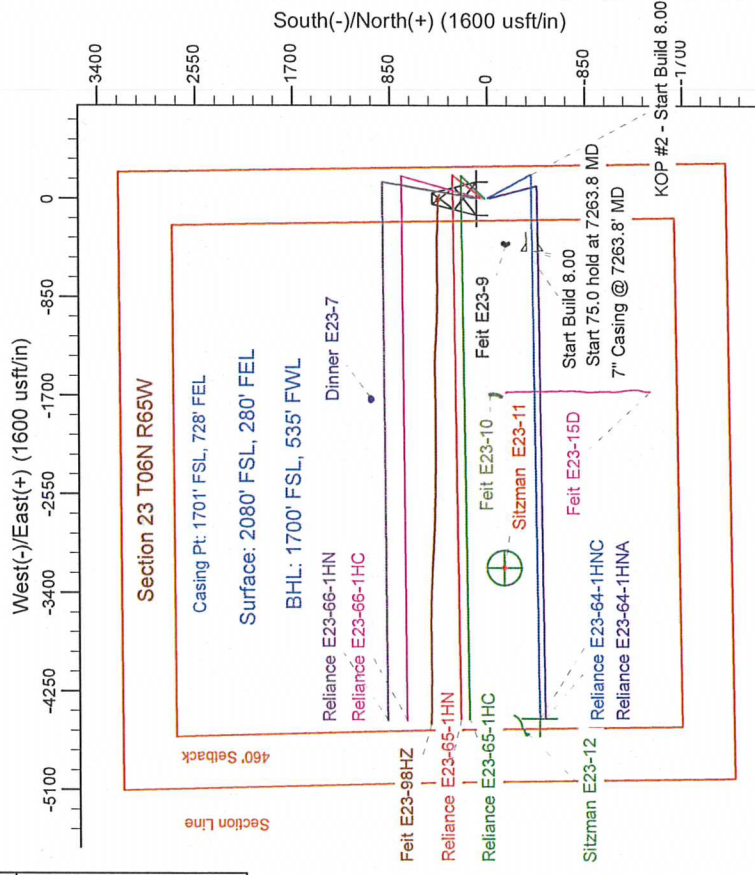
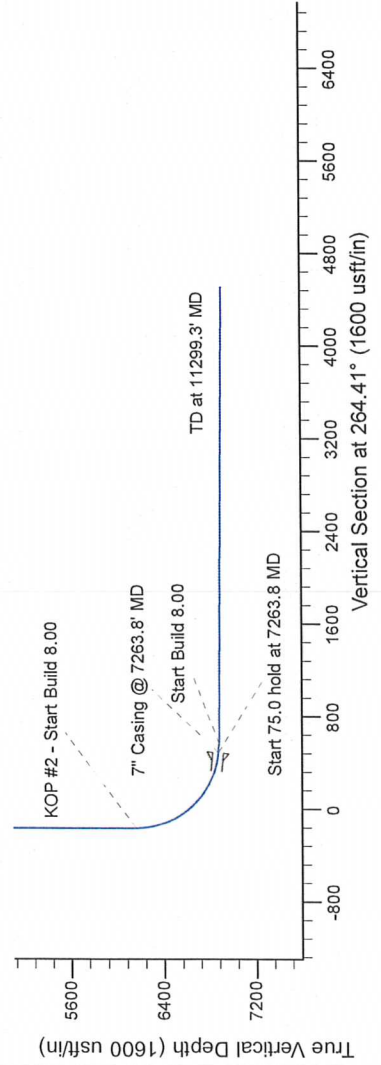
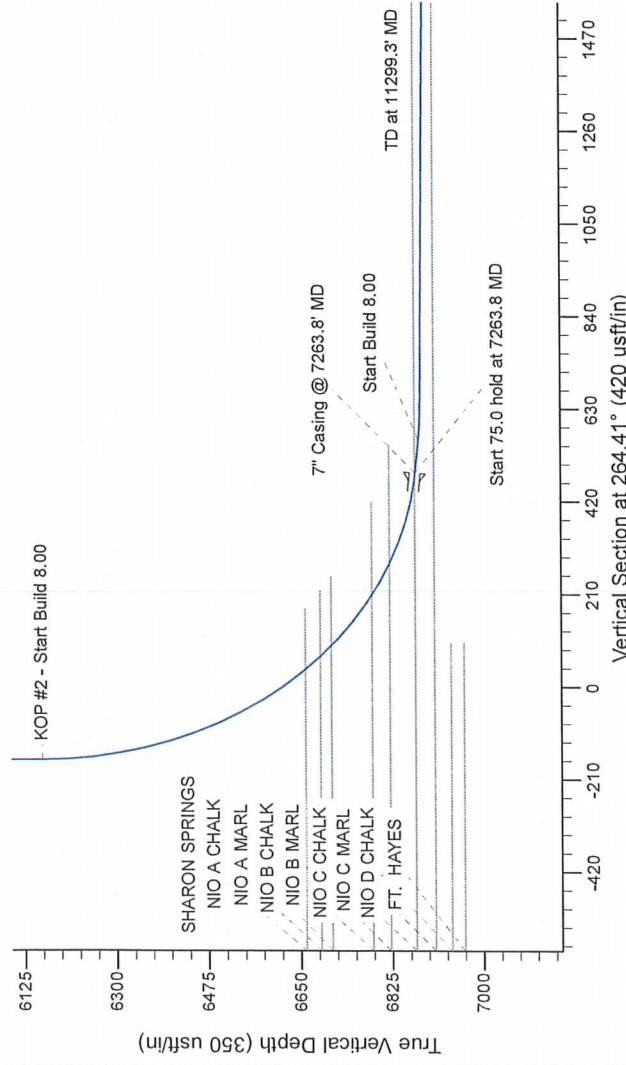
Project: Wattenberg Field
Site: E (Sec.23-T06N-R65W) Weld County, CO
Well: Reliance E23-64-1HNC
Wellbore: Original Drilling
Design: APD - Rev 1

Northern Region Drilling - Working

Geodetic System: US State Plane 1983
Datum: North American Datum 1983
Ellipsoid: GRS 1980
Zone: Colorado Northern Zone
System Datum: Mean Sea Level

SECTION DETAILS

Sec	MD	Inc	Azi	TVD	+N/S	+E/W	Dleg	TFace	VSet	Target
1	0.0	0.00	0.00	0.0	0.0	0.0	0.00	0.00	0.0	
2	1500.0	0.00	0.00	1500.0	0.0	0.0	0.00	0.00	0.0	
3	2151.5	13.03	151.65	2145.9	-84.9	35.0	151.65	-28.2	0.0	
4	3412.1	13.03	151.65	3374.1	-115.1	170.0	180.00	-132.5	0.0	
5	4063.7	0.00	0.00	4020.0	-380.0	205.0	0.00	-167.0	0.0	
6	5201.3	95.00	0.00	4971.9	-388.2	448.7	0.00	484.4	0.0	
7	6201.3	95.00	269.33	6977.6	-389.1	-523.4	0.00	558.8	0.0	
8	7238.8	89.50	269.33	6980.3	-389.8	-579.6	0.00	614.8	0.0	
9	7398.6	89.50	269.33	6980.3	-389.8	-579.6	0.00	614.8	0.0	
10	11299.3	89.50	269.33	6914.4	-438.5	-4483.4	0.00	4504.8	0.0	Reliance E23-64-1HNC BHL 1700'FSL, 535'FWL



WELL DETAILS: Reliance E23-64-1HNC

	North	East	Ground Level	Latitude	Longitude
0.0	1415241.98	3244317.63	40.469920	40.469920	-104.621850

Plan: APD - Rev 1 (Reliance E23-64-1HNC/Original Drilling)

Created By: Shalley Jewell	Date: 10/55, October 10 2013
Checked: _____	Date: _____
Reviewed: _____	Date: _____
Approved: _____	Date: _____