



RADIAL CEMENT BOND  
GAMMA RAY  
CCL

Company		KERR McGEE ROCKY MOUNTAIN CORP.					
Well		ELTON N. MILLER C #2					
Field		WATTENBERG					
County		WELD					
State		CO					
Company		KERR McGEE ROCKY MOUNTAIN CORP.					
Well		ELTON N. MILLER C #2					
Field		WATTENBERG					
County		WELD					
State		CO					
Location:		API # : 05-123-09991 NE/SE					
Permanent Datum		GL	Elevation				
Log Measured From		KB 10'	4853				
Drilling Measured From		KB	Elevation K.B. 4863 D.F. 4862 G.L. 4853				
Date		10-9-2013					
Run Number		1					
Depth Driller		7980'					
Depth Logger		7066'					
Bottom Logged Interval		7066'					
Top Log Interval		3400'					
Open Hole Size		7.875					
Type Fluid		WATER					
Density / Viscosity		1.0					
Max. Recorded Temp.		214					
Estimated Cement Top		N/A					
Time Well Ready		N/A					
Time Logger on Bottom		N/A					
Equipment Number		4310					
Location		GREELEY					
Recorded By		M. JANDREAU					
Witnessed By		AL MORALES					
Borehole Record							
Run Number	Bit	From	To	Size	Weight	From	To
ONE							
TWO							
Casing Record	Size		Wgt/Ft	Top	Bottom		
Surface String	8.63		24#	0	642"		
Prot. String							
Production String	4.5		11.6#	0	T.D.		
Liner							

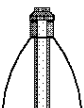
<<< Fold Here >>>

All interpretations are opinions based on inferences from electrical or other measurements and we cannot and do not guarantee the accuracy or correctness of any interpretation, and we shall not, except in the case of gross or willful negligence on our part, be liable or responsible for any loss, costs, damages, or expenses incurred or sustained by anyone resulting from any interpretation made by any of our officers, agents or employees. These interpretations are also subject to our general terms and conditions set out in our current Price Schedule.

Comments

RAN CBL TO VERIFY CEMENT

THANK YOU FOR USING IPS !!!!!!!

Sensor	Offset (ft)	Schematic	Description	Len (ft)	OD (in)	Wt (lb)
						

Tool Joint	Length (ft)	Weight (lb)	OD (in)	Remarks
HEADVOLT	14.92			
IntTemp	13.50			
WVF3FT	10.25			
WVFCAL	10.25			
WVFS1	10.25			
WVFS2	10.25			
WVFS3	10.25			
WVFS4	10.25			
WVFS5	10.25			
WVFS6	10.25			
WVFS7	10.25			
WVFS8	10.25			
WVF5FT	9.25			
CNLSC	6.00			
CNSSC	5.17			
CCL	3.64			
GR	0.90			
PTS275	2.83	2.75		
RBT-Probe (Base)	8.92	2.75	90.00	Probe Radii Bond Tool with Digital Telemetry
CNT-Probe_B (275)	1.67	2.75	40.00	6 bow centralizer
GR-Probe (275)	4.33	2.75	30.00	Probe 2.75"

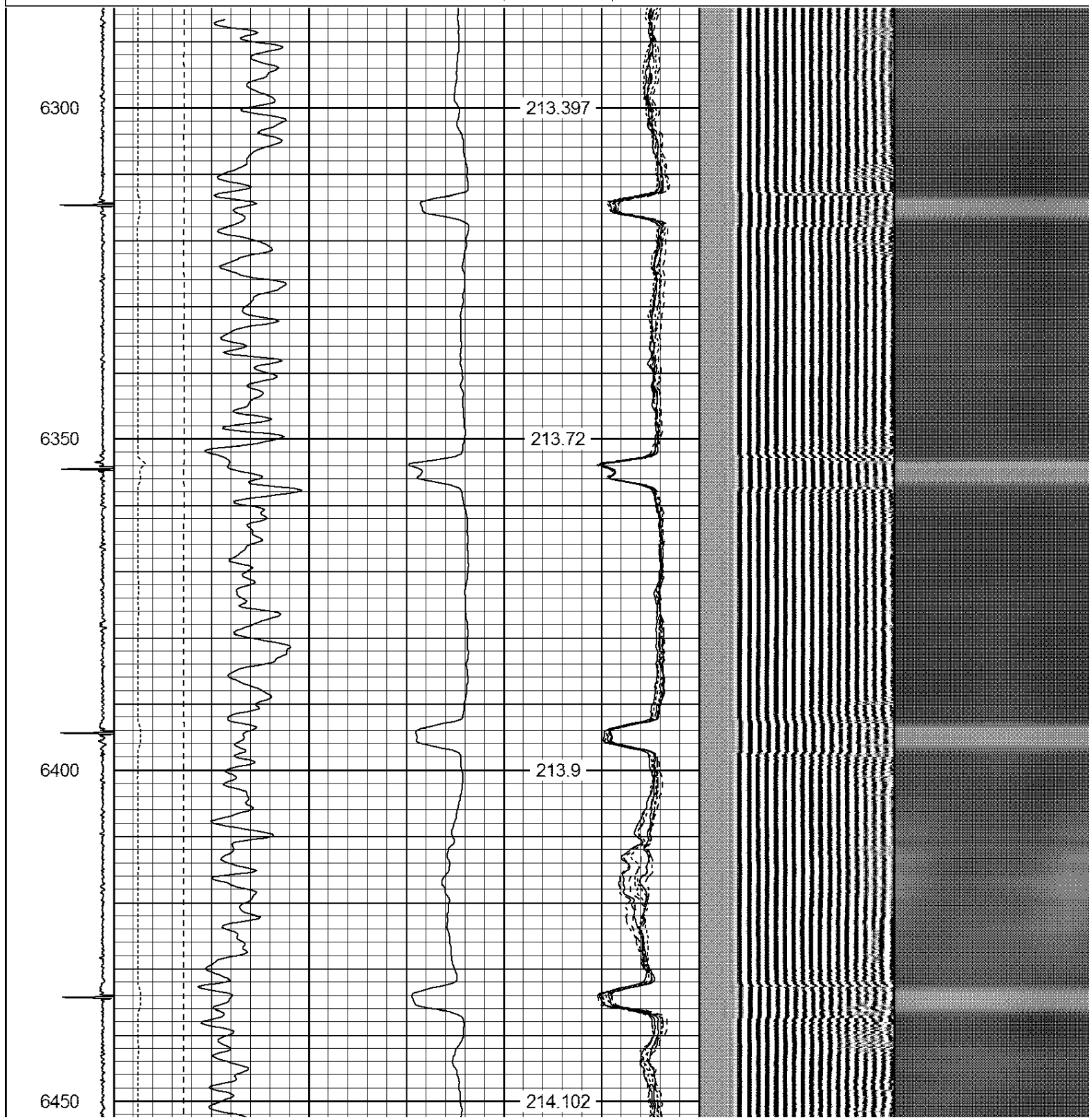
Dataset: elton n miller #2.db: field/well/run1/pass2

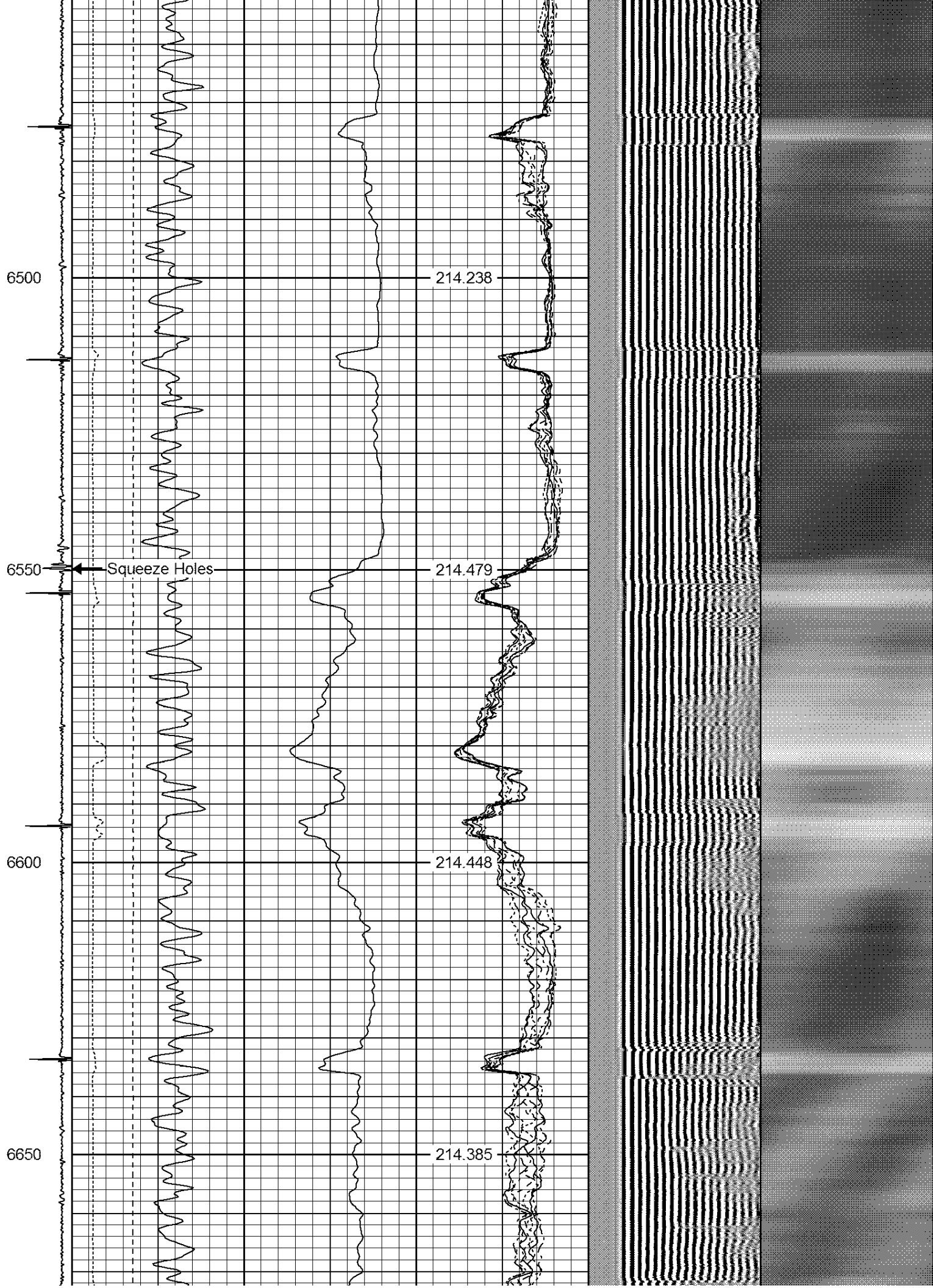
Total Length: 17.75 ft

Total Weight: 160.00 lb

O.D. 2.75 in

-9	CCL	1	200	TT (usec)	800	0	AMP (mV)	100	0	AMPS1	100	200	VDL	1200	1	Cement Map	8
			0	GR (GAPI)	200	0	AMPx5 (mV)	20	0	AMPS2	100				1		100
			200	GR (GAPI)	400				0	AMPS4	100						
			0	LSPD (ft/min)	250				0	AMPS5	100						
									0	AMPS6	100						
									0	AMPS7	100						
									0	AMPS8	100						
									IntTemp								
									(degF)								





6700

214.382

6750

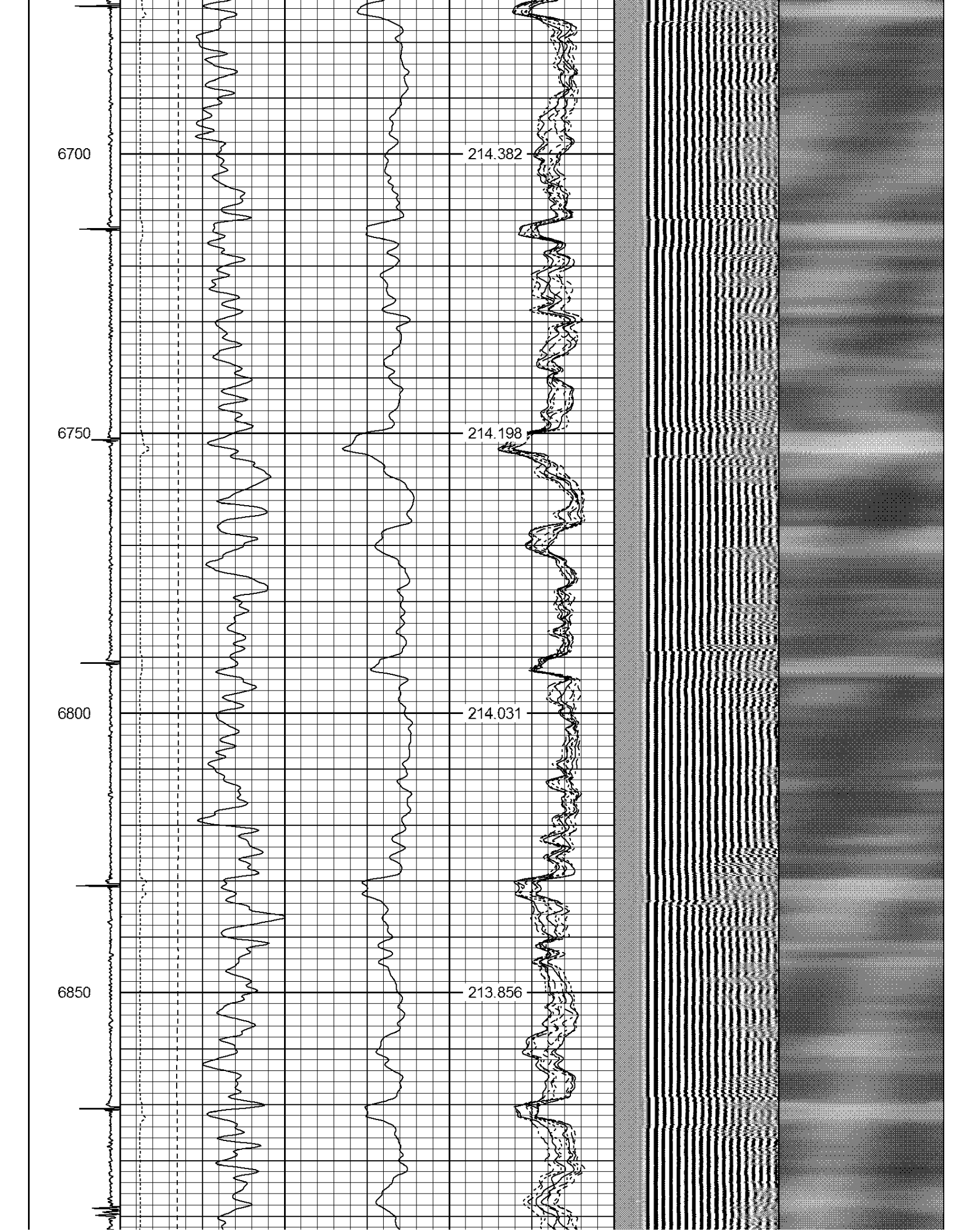
214.198

6800

214.031

6850

213.856





6900

213.45

6950

212.721

Squeeze Holes

7000

211.851

TT

LSPD

GR

CCL

AMPS8

AMPS7

AMPS6

AMPS5

AMPS4

AMPS2

AMPS1

AMP

7050

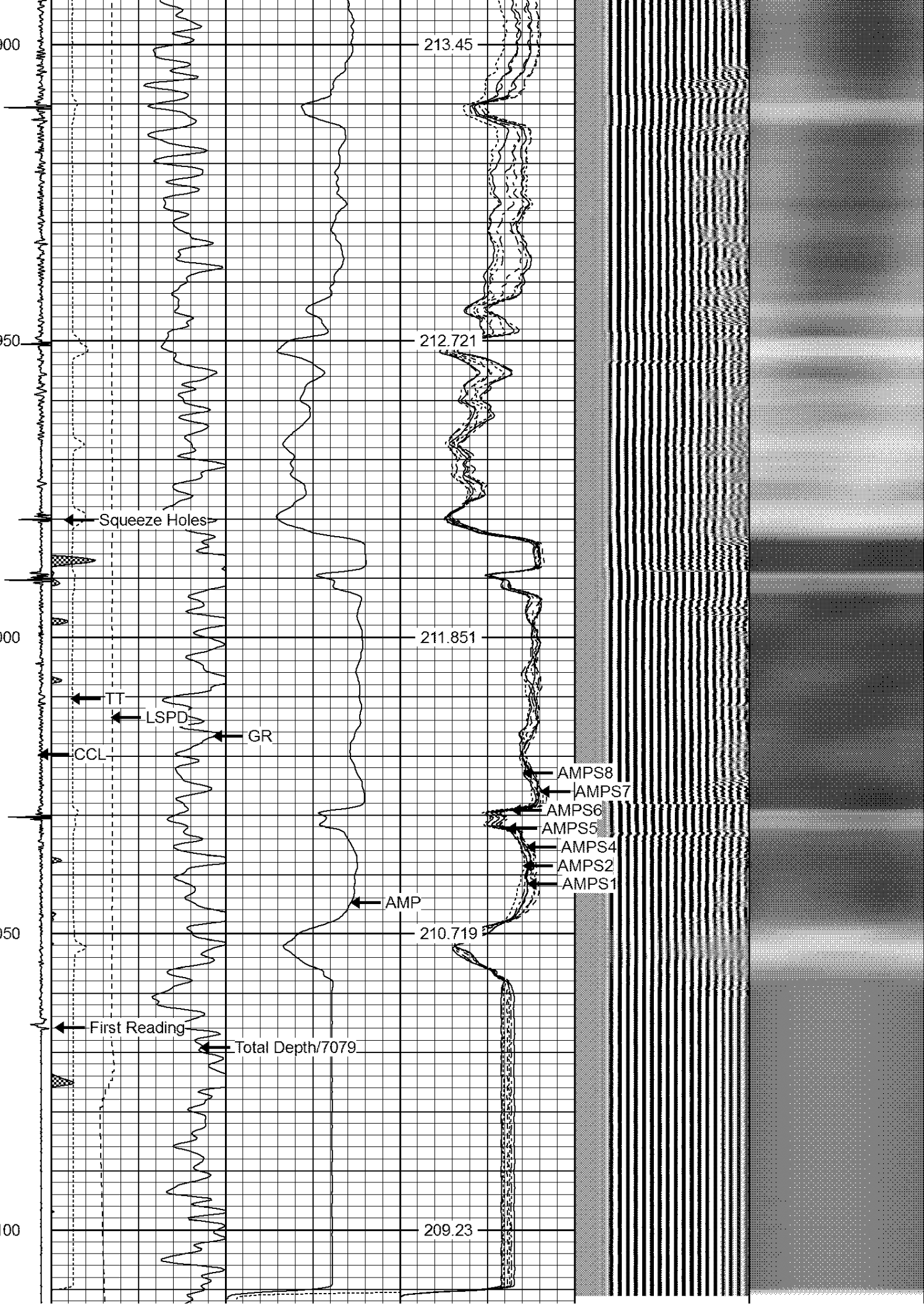
210.719

First Reading

Total Depth/7079

7100

209.23



-9	CCL	1	200	TT (usec)	800	0	AMP (mV)	100	0	AMPS1	100	200	VDL	1200	1	Cement Map	8
			0	GR (GAPI)	200	0	AMPx5 (mV)	20	0	AMPS2	100				1		100
			200	GR (GAPI)	400				0	AMPS4	100						
			0	LSPD (ft/min)	250				0	AMPS5	100						
									0	AMPS6	100						
									0	AMPS7	100						
									0	AMPS8	100						
									IntTemp								
									(degF)								

	<b>WARRIOR</b>		Company	KERR MCGEE OIL & GAS
	<b>ENERGY SERVICES</b>		Well	ELTON N. MILLER C #2
			Field	WATTENBERG
			County	WELD
			State	COLORADO