

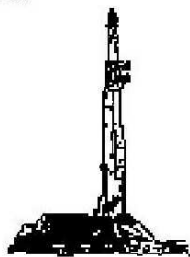
GOOLSBY BROTHERS and associates, inc.

575 Union Blvd, Suite 208
Lakewood, CO 80228
303-945-2860 Office



Geological Wellsite
Supervision

www.goolsbybrothers.com



Scale 1:240 (5"=100') Imperial
Measured Depth Log

Well Name: HENRICKSON FEDERAL 36C-18HZ (Vertical Hole Section)

Location: Section 7, T3N, R66W, WELD County, CO.

License Number: API: 05-123-37670

Region: DJ Basin - Wattenberg

Spud Date: September 15, 2013

Drilling Completed: September 22, 2013

Surface Coordinates: NESW Sec 7 T3N R66W; 1885' FSL 2078' FWL

Lat N 40.236993 Long W -104.822440

Bottom Hole Coordinates: SESW Sec 18 T3N R66W; 490' FSL 2496' FWL

Ground Elevation (ft): 4794'

K.B. Elevation (ft): 4810'

Logged Interval (ft): 6790' **To:** 14528' **Total Depth (ft):** 14528' DMTD

Formation: Pierre Sands/Shales, Niobrara, Codell Target

Type of Drilling Fluid: Water & Poly to 6674', LSND 6674' - 14528'

Printed by STRIP.LOG from WellSight Systems 1-800-447-1534 www.WellSight.com

OPERATOR

Company: Kerr-McGee Oil & Gas Onshore LP

Address: Granite Tower - 1099 18th St. Ste 1800

Denver, CO 80202

CO Geologist, John Morgan

E-Logs

MWD GR - 1017'-14481'

MWD RES - 7815'-14481'

Contractors

1) **Drilling Contractor:** XTREME, Rig #20

2) **Company Man:** Marvin Hackworth & Ricky Carrol

3) **Mud Comapny :** AES Drilling Fluids

Engineer: Ray Brewer

4) **Directional Drilling:** Baker Huges

Pulse Tool

Drillers: Barry Combs, Scott Stanford

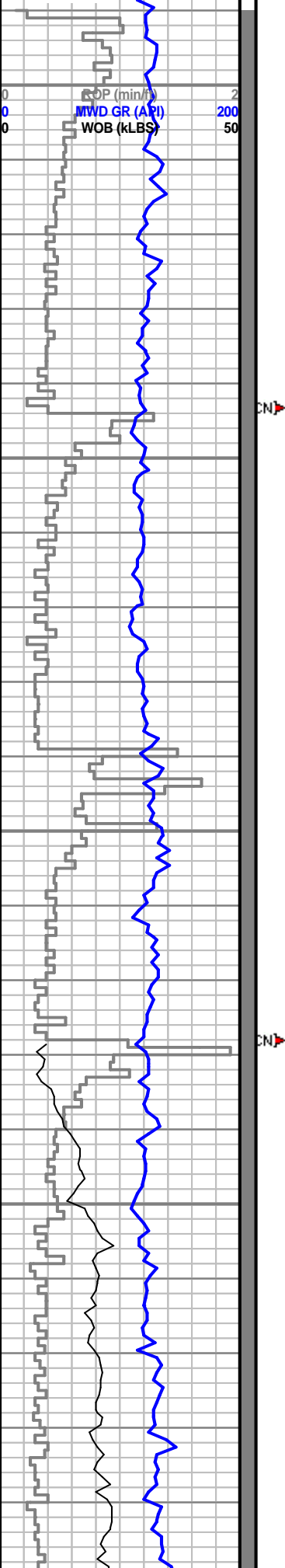
MWD: Greg Dore & David Campbell

5) **Gas Equipment:** Mudlogging Systems Inc.

by Terra Services

Redbox # ML-462 & Ratcliff Agitator

Curve
F/6790'(KOP) @
00:30hrs on
9/17/2013



D.S. 6787' MD, INC 0.876, AZI 133.24, TVD 6682.31 VS -738.28

SH: It med-med drk gry, rthy w abndt sbgrtty ctngs, sbtab-sbply, semi bldd & shrp ip, non calc, frm, frly uni w occ thn slty lenses

D.S. 6830' MD, INC 4.86, AZI 161.68, TVD 6725.25 VS -736.33

SH: It med-med drk gry, rthy w abndt sbgrtty ctngs, sbtab-sbply, semi bldd & shrp ip, non calc, frm, frly uni w occ thn slty lenses

D.S. 6872' MD, INC 9.58, AZI 162.85, TVD 6766.91 VS -731.30

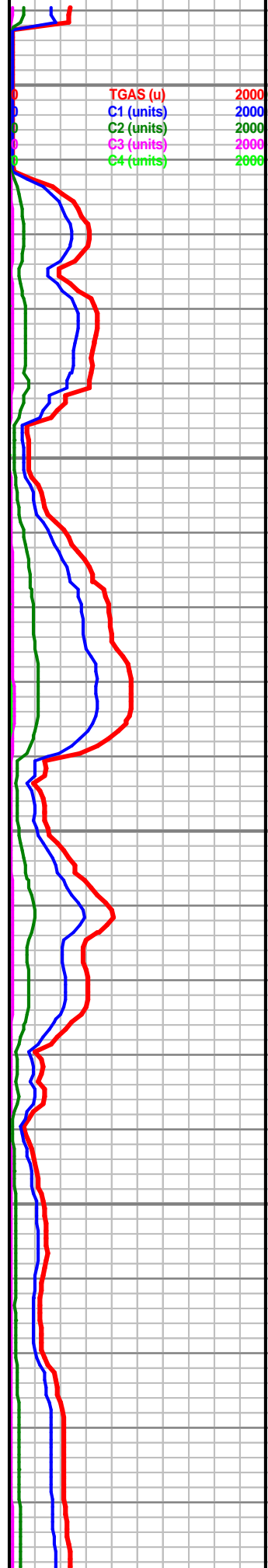
SH: It med-med drk gry, rthy w abndt sbgrtty ctngs, sbtab-sbply, semi bldd & shrp ip, non calc, frm, frly uni w occ thn slty lenses

D.S. 6915' MD, INC 14.07, AZI 163.57, TVD 6808.98 VS -722.87

SH: It med-med drk gry, rthy w abndt sbgrtty ctngs, sbtab-sbply, semi bldd & shrp ip, non calc, frm, frly uni w occ thn slty lenses

D.S. 6957' MD, INC 18.48, AZI 165.17, TVD 6849.29 VS -711.53

SH: It med-med drk gry, rthy w abndt sbgrtty ctngs, sbtab-sbply, semi bldd & shrp ip, non calc, frm, frly uni w occ thn slty lenses



MW 9.9
VIS 40

MW 10
VIS 42

MW 10
VIS 42

TGAS (u)	2000	6	MWI (ppg)	12
C1 (units)	2000	6	MWO (ppg)	12
C2 (units)	2000			
C3 (units)	2000			
C4 (units)	2000			

