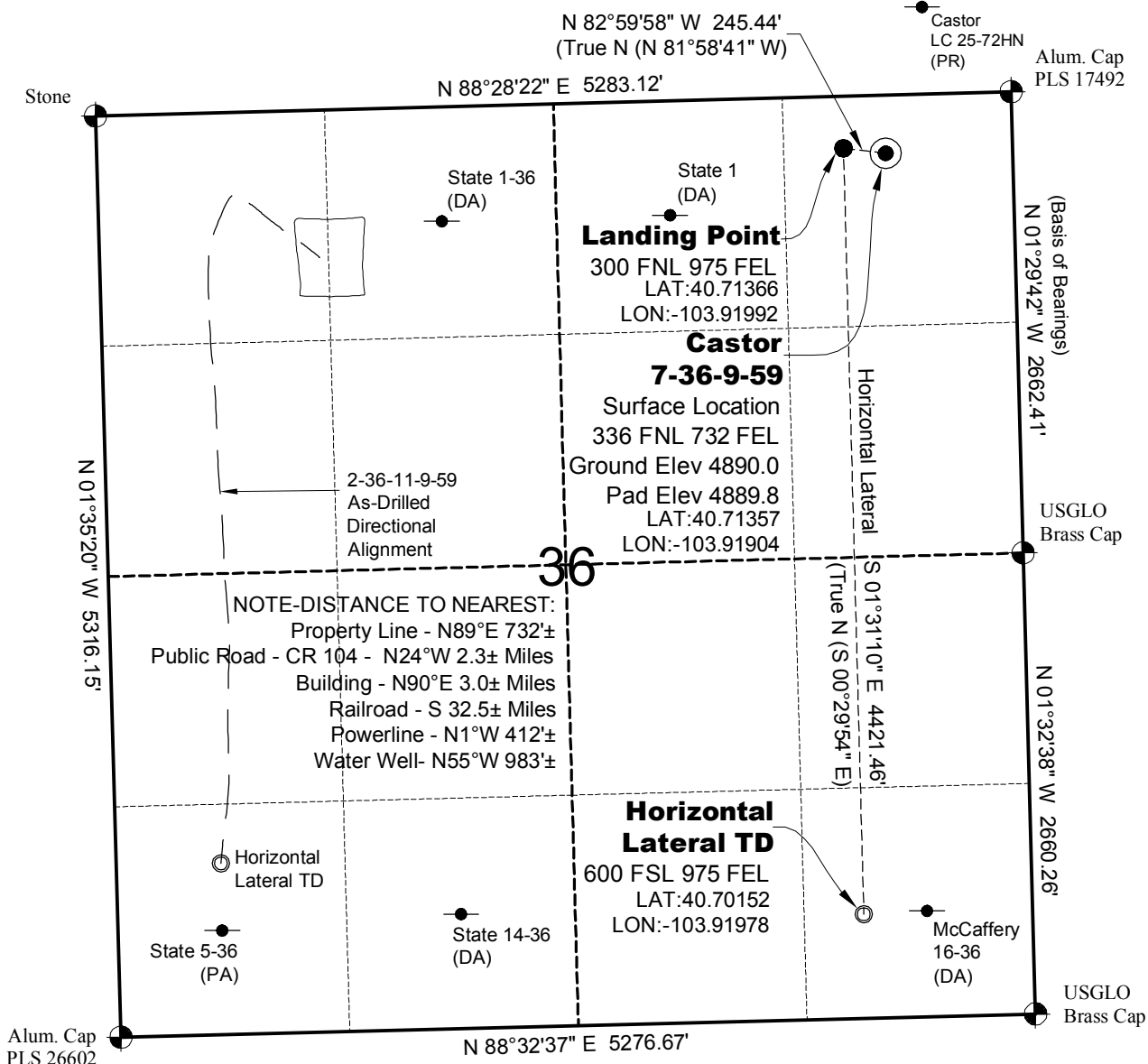


# WELL LOCATION MAP

**CASTOR  
4-36-9-59 PAD**



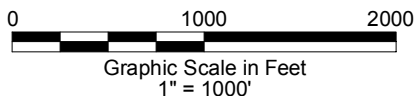
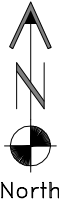
NOTE-DISTANCE TO NEAREST:  
 Property Line - N89°E 732±  
 Public Road - CR 104 - N24°W 2.3± Miles  
 Building - N90°E 3.0± Miles  
 Railroad - S 32.5± Miles  
 Powerline - N1°W 412±  
 Water Well- N55°W 983±

## NOTES

- 1.) Horizontal (NAD 83) and vertical (NAVD 88) datum is based on the Leica Geosystems SmartNet of Colorado.
- 2.) All directions, distances, and dimensions shown hereon are based on coordinates from the "Colorado coordinate system of 1983 north zone" (article 52 of title 38, C.R.S.).
- 3.) All section line dimensions shown hereon are based on field measurements of existing monuments and/or physical evidence found in the field unless otherwise indicated.
- 4.) Physical features shown hereon are for graphical representation only.
- 5.) See Form 2A for visible improvements within 500' of wellhead.
- 6.) Distances to nearest section lines are measured perpendicularly.
- 7.) This is not a land survey nor land survey plat.
- 8.) Date of Survey 7/24/13; Date of Drawing 10/30/13. REV 3  
 PDOP Reading: 1.9 Instrument Operator: Mark Woodard

## SURVEYOR'S STATEMENT

The undersigned hereby states that the well location shown hereon was staked on the ground based on existing monumentation and/or physical evidence found in the field and is correct to the best of my knowledge, information and belief.



**GEO SURV**

LAND SURVEYING AND MAPPING  
 LAFAYETTE - WINTER PARK  
 Ph 303 666 0379 Fx 303 665 6320

**CARRIZO NIOBRARA LLC**  
**CASTOR 7-36-9-59**

**SL NE1/4 NE1/4 SEC.36 T9N R59W**  
**HL TD SE1/4 SE1/4 SEC.36 T9N R59W**  
**6th PM WELD COUNTY COLORADO**