



# Kerr-McGee Oil & Gas Onshore LP

A subsidiary of Anadarko Petroleum Corporation

1099 18<sup>th</sup> Street  
Denver, CO 80202  
720-929-6000

October 1, 2013

Department of Natural Resources  
Oil and Gas Conservation Commission  
The Chancery Building  
1120 Lincoln St., Suite 801  
Denver, CO 80203

Re: **30 Day Certification Letter - 318A-e**  
LANSDOWN STATE 29N-21HZ  
Township 2 North, Range 66 West, Section 21: SWSW  
Unit Spacing: 02N-66W-21 W2  
02N-66W-16 S2SW  
Weld County, Colorado

Ladies/Gentlemen:

Kerr McGee Oil and Gas Onshore LP ("KMG") hereby certify to the Director that KMG owns one-hundred percent (100%) of the mineral rights in the proposed spacing unit. Therefore, KMG respectfully requests the Director to approve the boundary well.

If you have any questions or issues regarding this permit, please contact Cheryl Light at (720) 929-6461.

Very truly yours,

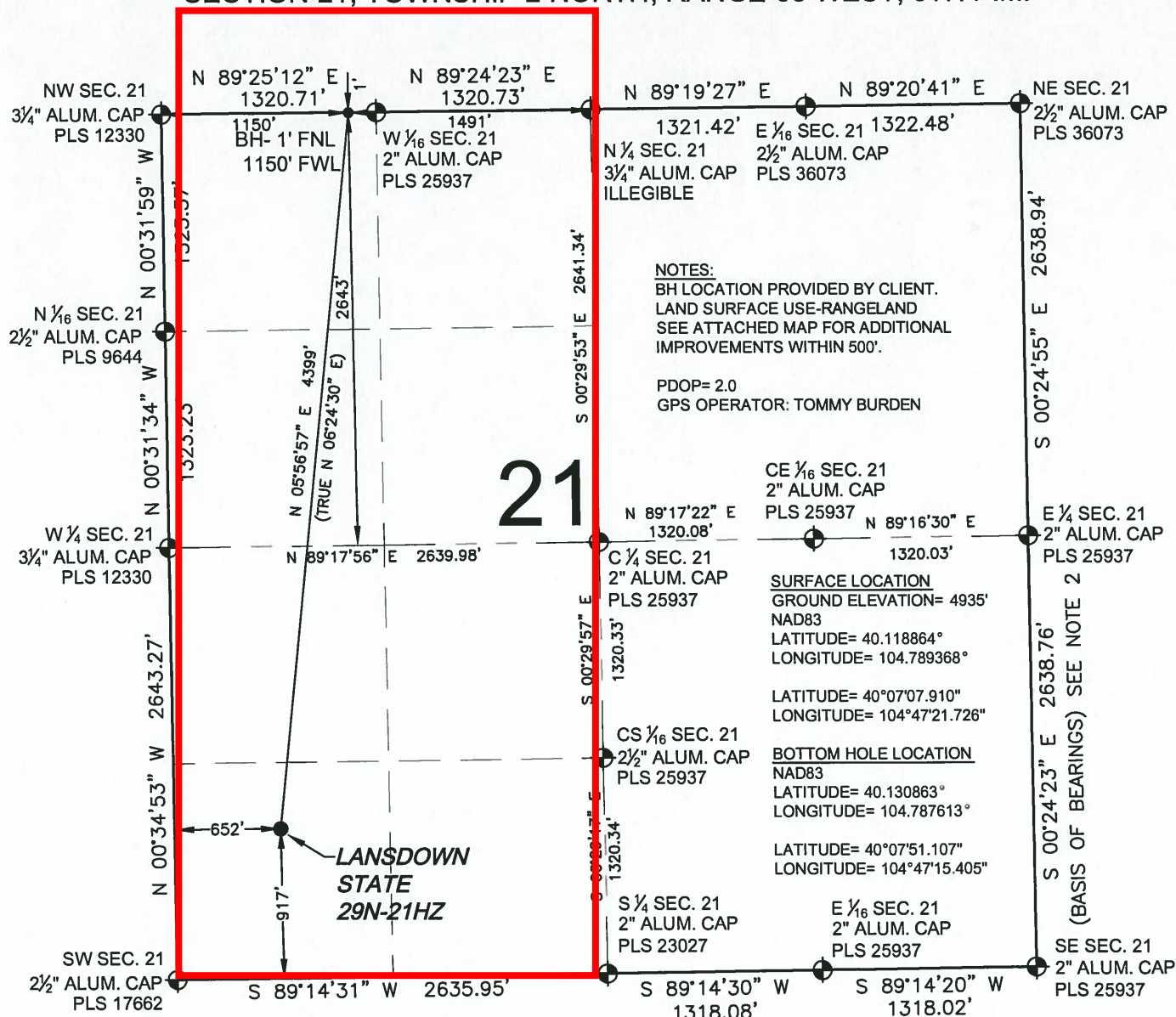
**KERR-McGEE OIL AND GAS ONSHORE LP**

A handwritten signature in black ink that reads 'R Powers'.

**Ronett Powers**  
**Regulatory Analyst II**

## WELL LOCATION CERTIFICATE: LANSDOWN STATE 29N-21HZ

SECTION 21, TOWNSHIP 2 NORTH, RANGE 66 WEST, 6TH P.M.



## NOTES:

BH LOCATION PROVIDED BY CLIENT.  
LAND SURFACE USE-RANGELAND  
SEE ATTACHED MAP FOR ADDITIONAL  
IMPROVEMENTS WITHIN 500'.

PDOP= 2.0

GPS OPERATOR: TOMMY BURDEN

CE 1/6 SEC. 21  
2" ALUM. CAP  
PLS 25937

N 89°17'22" E  
1320.08'

C 1/4 SEC. 21  
2" ALUM. CAP  
PLS 25937

**SURFACE LOCATION**  
GROUND ELEVATION= 4935'  
NAD83  
LATITUDE= 40.118864°  
LONGITUDE= 104.789368°

LATITUDE= 40°07'07.910"  
LONGITUDE= 104°47'21.726°

**BOTTOM HOLE LOCATION**  
NAD83  
LATITUDE= 40.130863°  
LONGITUDE= 104.787613°

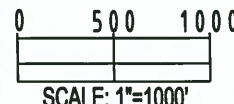
LATITUDE= 40°07'51.107"  
LONGITUDE= 104°47'15.405°

CS 1/6 SEC. 21  
2 1/2" ALUM. CAP  
PLS 25937

S 1/4 SEC. 21  
2" ALUM. CAP  
PLS 23027

E 1/6 SEC. 21  
2" ALUM. CAP  
PLS 25937

SE SEC. 21  
2" ALUM. CAP  
PLS 25937



PREPARED BY:



FIELD DATE:

09-05-13

DRAWING DATE:

09-06-13

BY:

SMF

CHECKED:

CLM

SURFACE LOCATION:

SW 1/4 SW 1/4,

SEC. 21, T2N, R66W, 6TH P.M.

WELD COUNTY, COLORADO