

Job # 12099 Knoss 6-21 Production Facility

Inv # 1960

High Prairie Surveying of Kiowa, Colorado has in accordance with a request from **Nighthawk Production LLC** has determined the location of the **Knoss 6-21 Production Facility** to be **51 feet FNL**, and **190 feet FWL**, (90° off Section lines) of Section **20**, Township **12s**, Range **56w** of the 6th Principal Meridian, **Lincoln County**, Colorado.

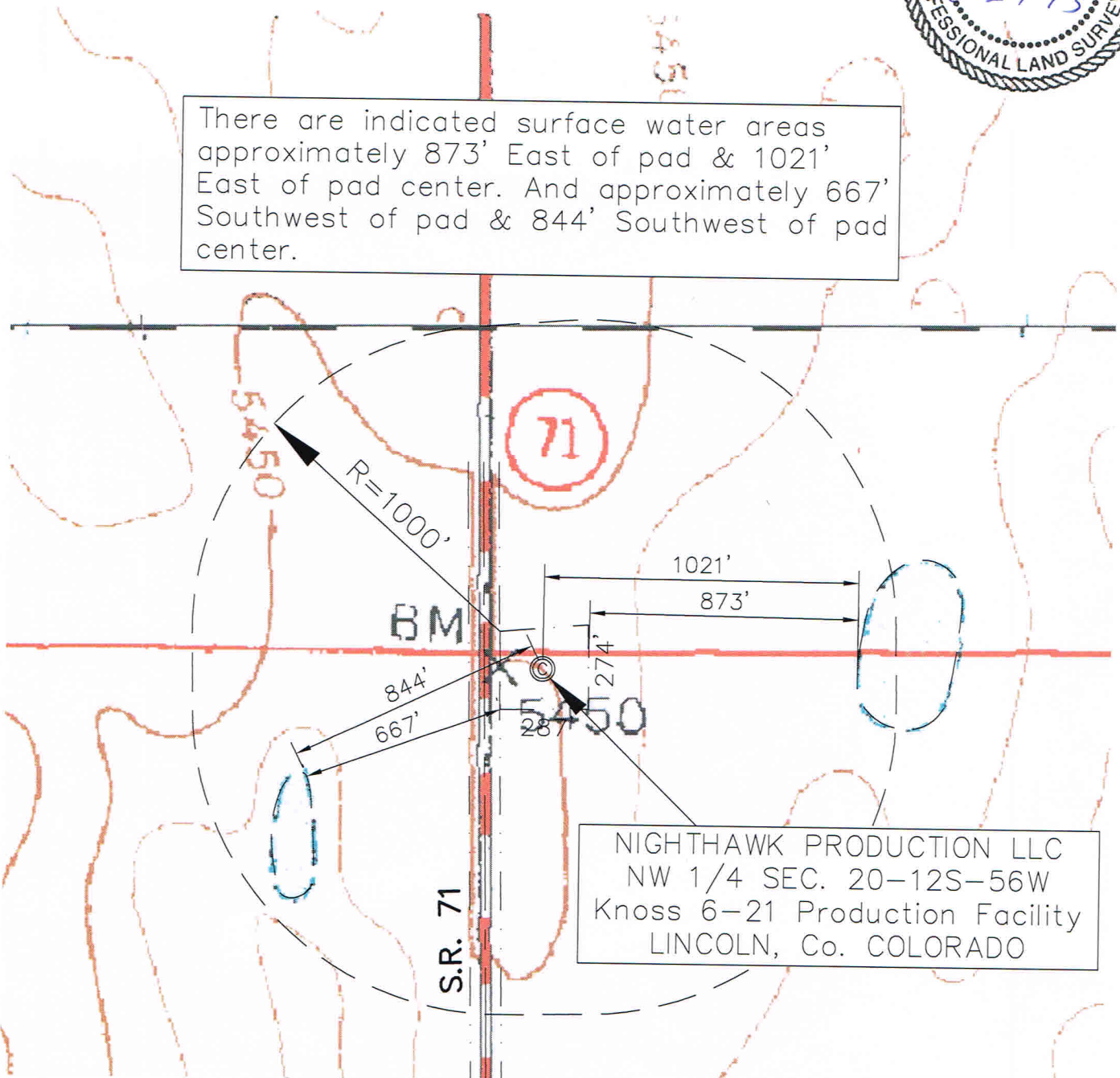
Date: Staked on 12/13/12, Drawn on 10/24/13.

Re: Staked by Elijah Frane
Drawn: Drawn by Dustin Cotter



1000' Hydrology Map

There are indicated surface water areas approximately 873' East of pad & 1021' East of pad center. And approximately 667' Southwest of pad & 844' Southwest of pad center.



NIGHTHAWK PRODUCTION LLC
NW 1/4 SEC. 20-12S-56W
Knoss 6-21 Production Facility
LINCOLN, Co. COLORADO