

T10N, R58W, 6th P.M.

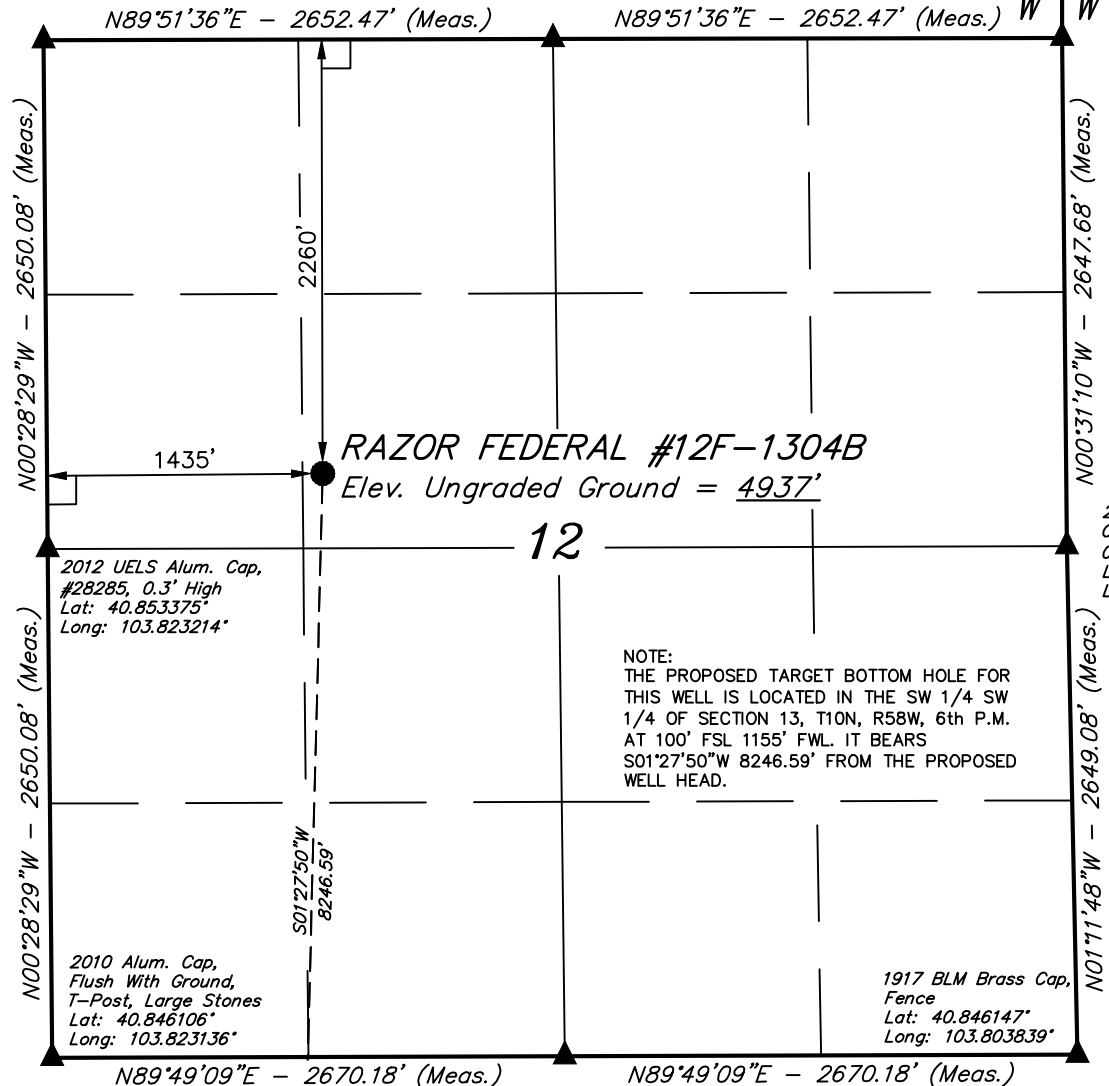
2012 UELS Alum. Cap,  
#28285, 0.3' High  
Lat: 40.860647°  
Long: 103.823292°

2012 UELS Alum. Cap,  
#28285, 0.3' High  
Lat: 40.860664°  
Long: 103.813706°

2006 Private Alum.  
Cap, #24949,  
0.6' Below Ground  
Lat: 40.860678°  
Long: 103.804117°

R  
58  
W

R  
57  
W



NOTE:  
THE PROPOSED TARGET BOTTOM HOLE FOR  
THIS WELL IS LOCATED IN THE SW 1/4 SW  
1/4 OF SECTION 13, T10N, R58W, 6th P.M.  
AT 100' FSL 1155' FWL IT BEARS  
S01°27'50"W 8246.59' FROM THE PROPOSED  
WELL HEAD.

# LEGEND:

- └ = 90° SYMBOL
- = PROPOSED WELL HEAD.
- ▲ = SECTION CORNERS LOCATED.



Target Bottom Hole

2012 UELS Alum. Cap,  
#28285, 0.3' High  
Lat: 40.846125°  
Long: 103.813489°

PDOP = 3.7

NAD 83 (SURFACE LOCATION)	
LATITUDE	= 40°51'16.04" (40.854456)
LONGITUDE	= 103°49'04.94" (103.818039)
NAD 27 (SURFACE LOCATION)	
LATITUDE	= 40°51'16.09" (40.854469)
LONGITUDE	= 103°49'03.14" (103.817539)

## WHITING OIL & GAS CORP.

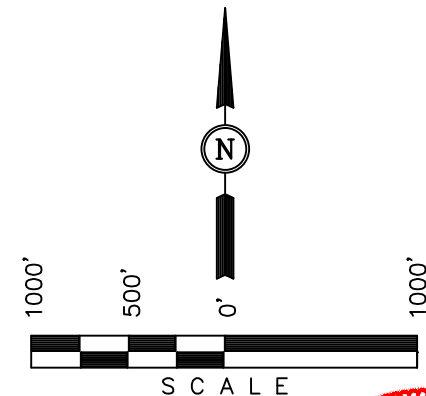
Well location, RAZOR FEDERAL #12F-1304B  
(SURFACE LOCATION), located as shown in the SE  
1/4 NW 1/4 of Section 12, T10N, R58W, 6th P.M.,  
Weld County, Colorado.

## BASIS OF ELEVATION

SPOT ELEVATION LOCATED AT THE NORTHEAST CORNER OF  
SECTION 15, T9N, R58W, 6th P.M. TAKEN FROM THE  
GATEHOOK SPRING, QUADRANGLE, COLORADO, WELD COUNTY,  
7.5 MINUTE QUAD (TOPOGRAPHIC MAP) PUBLISHED BY THE  
UNITED STATES DEPARTMENT OF THE INTERIOR, GEOLOGICAL  
SURVEY. SAID ELEVATION IS MARKED AS BEING 4679 FEET.

## BASIS OF BEARINGS

BASIS OF BEARINGS IS A G.P.S. OBSERVATION.



## CERTIFICATION

THIS IS TO CERTIFY THAT THE ABOVE PLAT WAS PREPARED FROM  
FIELD NOTES OF ACTUAL SURVEYS MADE BY ME OR UNDER MY  
SUPERVISION AND THAT THE SAME ARE TRUE AND CORRECT TO THE  
BEST OF MY KNOWLEDGE AND BELIEF.

REGISTERED LAND SURVEYOR  
REGISTRATION NO. 28285  
STATE OF COLORADO 05-16-13

REV: 07-02-13 B.D.H.  
REV: 06-25-13 H.K.W.  
REV: 06-03-13 B.D.H.

UINTAH ENGINEERING & LAND SURVEYING  
85 SOUTH 200 EAST - VERNAL, UTAH 84078  
(435) 789-1017

SCALE 1" = 1000'	DATE SURVEYED: 05-14-13	DATE DRAWN: 05-20-13
PARTY J.H. K.H. A.D.	REFERENCES G.L.O. PLAT	
WEATHER WARM	FILE WHITING OIL & GAS CORP.	

T10N, R58W, 6th P.M.

WHITING OIL & GAS CORP.

2010 Alum. Cap,  
Flush With Ground,  
T-Post, Large Stones  
Lat: 40.846106°  
Long: 103.823136°

Surface  
Location

2012 UELS Alum. Cap,  
#28285, 0.3' High  
Lat: 40.846125°  
Long: 103.813489°

R  
58  
W

R  
57  
W

1917 BLM Brass Cap,  
Fence  
Lat: 40.846147°  
Long: 103.803839°

NOTE:  
THE PROPOSED TARGET BOTTOM HOLE  
BEARS S01°27'50"W 8246.59' FROM THE  
PROPOSED WELL HEAD WHICH IS LOCATED IN  
THE SE 1/4 NW 1/4 OF SECTION 12, T10N,  
R58W, 6th P.M., AT 2260' FNL 1435' FWL.

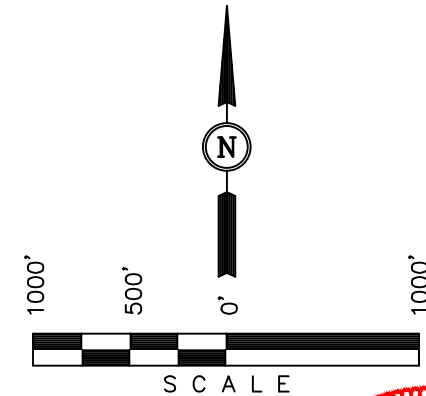
2012 UELS Alum. Cap,  
#28285, 0.1' High  
Lat: 40.838878°  
Long: 103.803747°

### BASIS OF ELEVATION

SPOT ELEVATION LOCATED AT THE NORTHEAST CORNER OF  
SECTION 15, T9N, R58W, 6th P.M. TAKEN FROM THE  
GATEHOOK SPRING, QUADRANGLE, COLORADO, WELD COUNTY,  
7.5 MINUTE QUAD (TOPOGRAPHIC MAP) PUBLISHED BY THE  
UNITED STATES DEPARTMENT OF THE INTERIOR, GEOLOGICAL  
SURVEY. SAID ELEVATION IS MARKED AS BEING 4679 FEET.

### BASIS OF BEARINGS

BASIS OF BEARINGS IS A G.P.S. OBSERVATION.



### CERTIFICATION

THIS IS TO CERTIFY THAT THE ABOVE PLAT WAS PREPARED FROM  
FIELD NOTES OF ACTUAL SURVEYS MADE BY ME OR UNDER MY  
SUPERVISION AND THAT THE SAME ARE TRUE AND CORRECT TO THE  
BEST OF MY KNOWLEDGE AND BELIEF.

REGISTERED LAND SURVEYOR  
REGISTRATION NO. 28285  
STATE OF COLORADO 06-25-13

REV: 06-25-13 H.K.W.  
REV: 06-03-13 B.D.H.

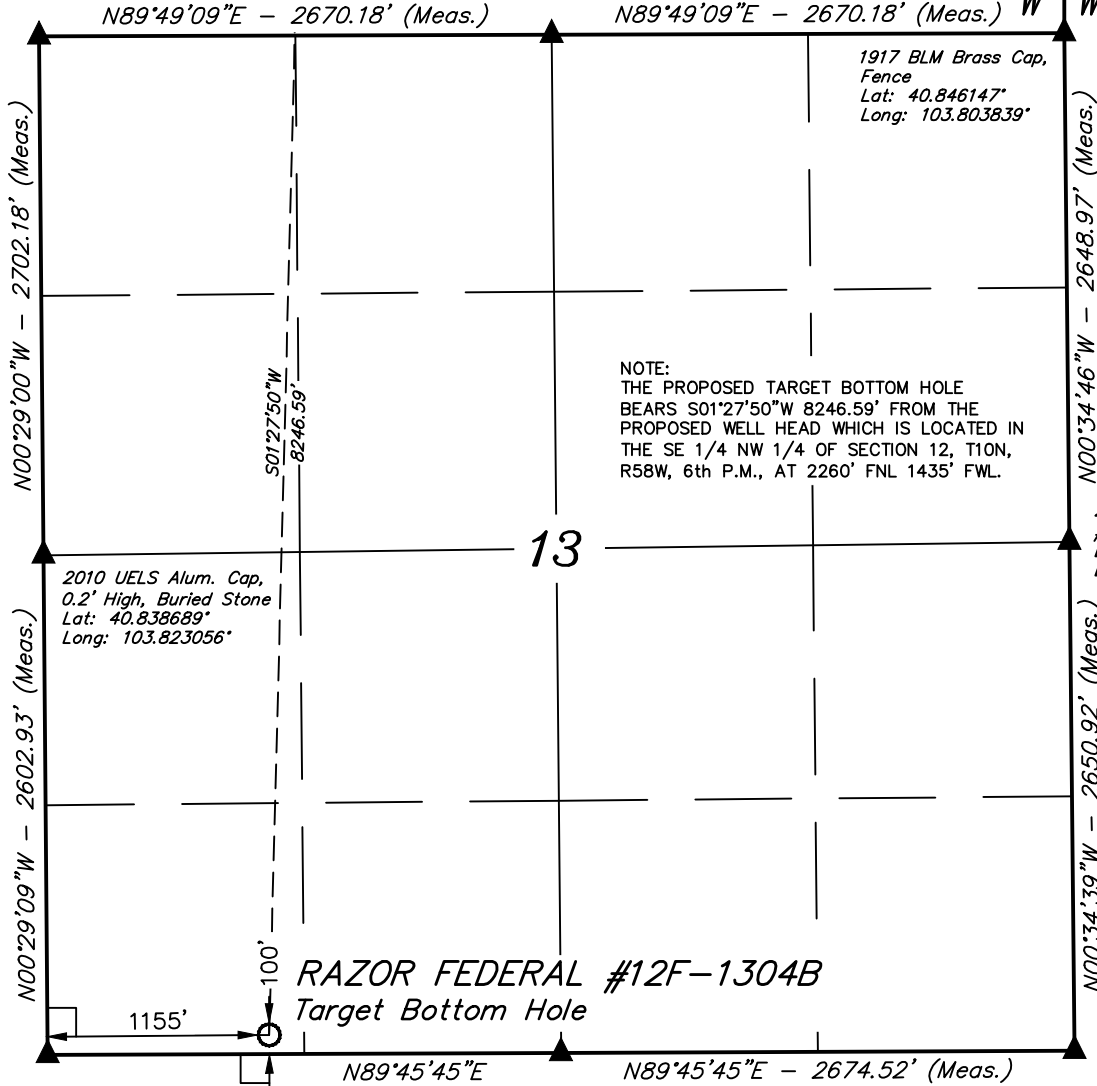
**UINTAH ENGINEERING & LAND SURVEYING**  
**85 SOUTH 200 EAST - VERNAL, UTAH 84078**  
**(435) 789-1017**

SCALE 1" = 1000'	DATE SURVEYED: 05-14-13	DATE DRAWN: 05-20-13
PARTY J.H. K.H. A.D.	REFERENCES G.L.O. PLAT	
WEATHER WARM	FILE WHITING OIL & GAS CORP.	

### LEGEND:

- └─┘ = 90° SYMBOL
- = PROPOSED WELL HEAD.
- ▲ = SECTION CORNERS LOCATED.

<b>NAD 83 (TARGET BOTTOM HOLE)</b>
LATITUDE = 40°49'54.60" (40.831833)
LONGITUDE = 103°49'07.71" (103.818808)
<b>NAD 27 (TARGET BOTTOM HOLE)</b>
LATITUDE = 40°49'54.65" (40.831847)
LONGITUDE = 103°49'05.91" (103.818308)



Set Stone  
Lat: 40.831547°  
Long: 103.822978°

2012 UELS Alum. Cap,  
#28285, 0.3' High  
Lat: 40.831575°  
Long: 103.813317°

2011 UELS Alum. Cap,  
0.6' Below Ground  
Lat: 40.831603°  
Long: 103.803653°