

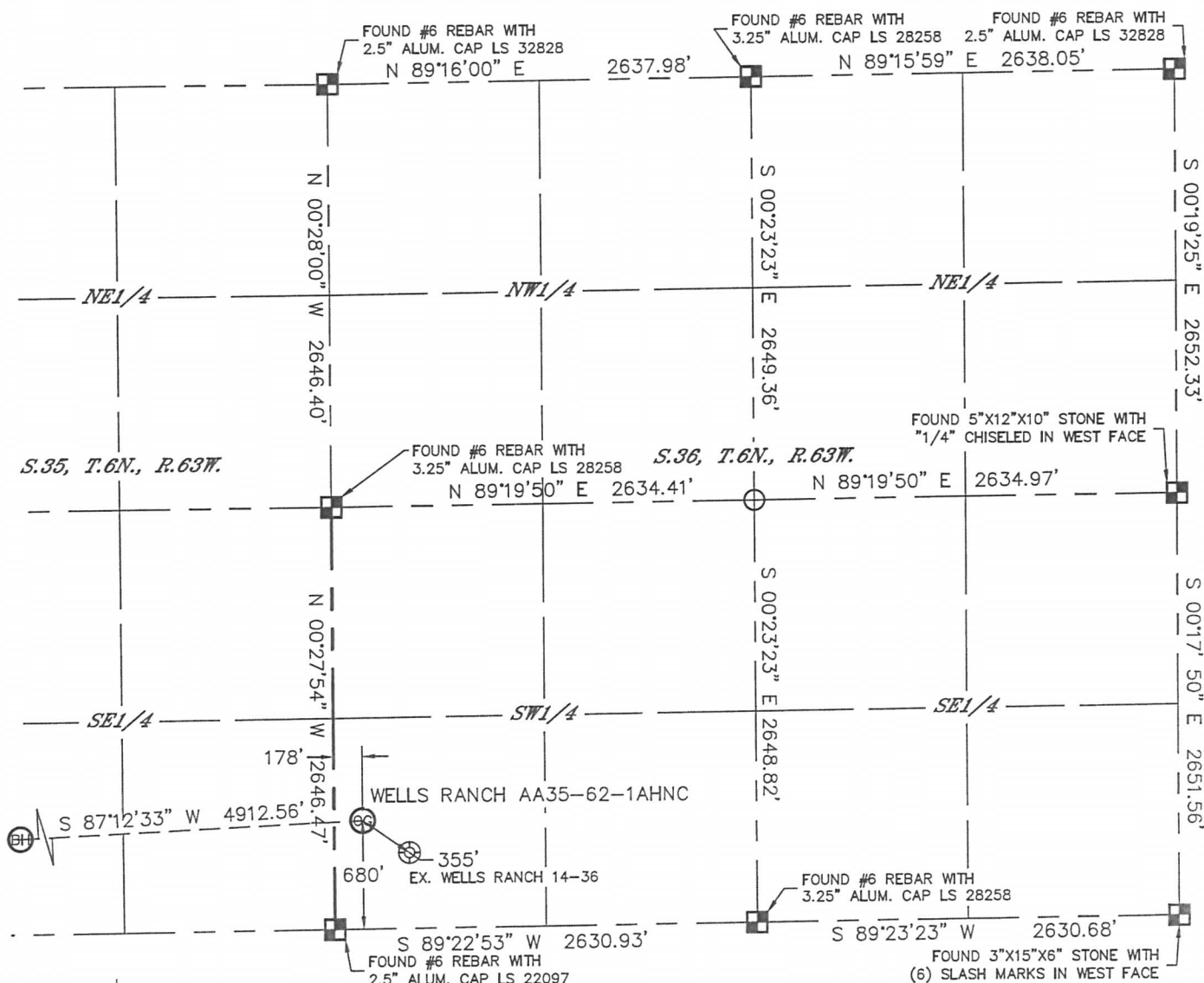


Lat40°, Inc. 1635 Foxtrail Drive, Suite 325 Loveland, CO 970-776-3321

WELL LOCATION CERTIFICATE

SECTION: 36
TOWNSHIP: 6N
RANGE: 63W

THIS MAP DOES NOT REPRESENT A BOUNDARY SURVEY



In accordance with a request from JACOB RICE with Noble Energy Inc., Lat40°, Inc. has determined the surface location of the WELLS RANCH AA35-62-1AHNC to be 680' from the SOUTH line and 178' from the WEST line as measured at right angles from the section lines of Section 36, Township 6 North, Range 63 West and the bottom hole to be 495' from the SOUTH line and 535' from the WEST line of Section 35, Township 6 North, Range 63 West of the Sixth Principal Meridian, County of Weld, State of Colorado.

I hereby state that this Well Location Certificate was prepared by me, or under my direct supervision, that the fieldwork was completed on 8/2/2013, for and on behalf of Noble Energy Inc. That this is not a Land Survey Plat or an Improvement Survey Plat, and that it is not to be relied upon for establishment of fence, building, or other future improvement lines.



NOTE: 1"=1000'

- 1) Bearings shown are Grid Bearings of the Colorado State Plane Coordinate System, North Zone, North American Datum 1983/2007. The lineal dimensions as contained herein are based upon the "U.S. Survey Foot."
 - 2) Ground elevations are based on an observed GPS elevation (NAVD 1988 DATUM).
 - 3) IMPROVEMENTS: See LOCATION DRAWING for all visible improvements within 500' of disturbed area.
 - 4) SURFACE USE: RANGELAND
 - 5) INSTRUMENT OPERATOR: ADAM KELLY
 - 6) NEAREST EXISTING WELL: WELLS RANCH 14-36, 355'
- NEAREST CULTURAL ITEMS:
BUILDING: 5280'+
BUILDING UNIT: 5280'+
HIGH OCCUPANCY BUILDING UNIT: 5280'+
DESIGNATED OUTSIDE ACTIVITY AREA: 5280'+
PUBLIC ROAD: 5280'+
ABOVEGROUND UTILITY: 5280'+
RAILROAD: 5280'+
PROPERTY LINE: 178' WEST

SURFACE LOCATION
LAT: 40.43749°N
LONG: 104.39411°W
PDOP: 1.3
ELEV: 4740'
1/4,1/4: SW1/4SW1/4

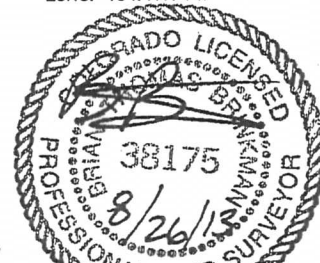
BOTTOM HOLE
LAT: 40.43700°N
LONG: 104.41174°W

LEGEND

- = ALIQUOT MONUMENT AS DESCRIBED
- = CALCULATED POSITION

SHEET 1 OF 2

Brian T. Brinkman—On Behalf of Lat40°, Inc.
Colorado Licensed Professional Land Surveyor No. 38175
DATE: 8/23/2013
PROJECT#: 2013028



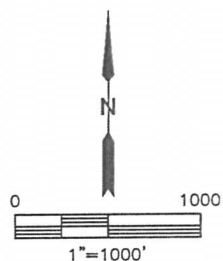
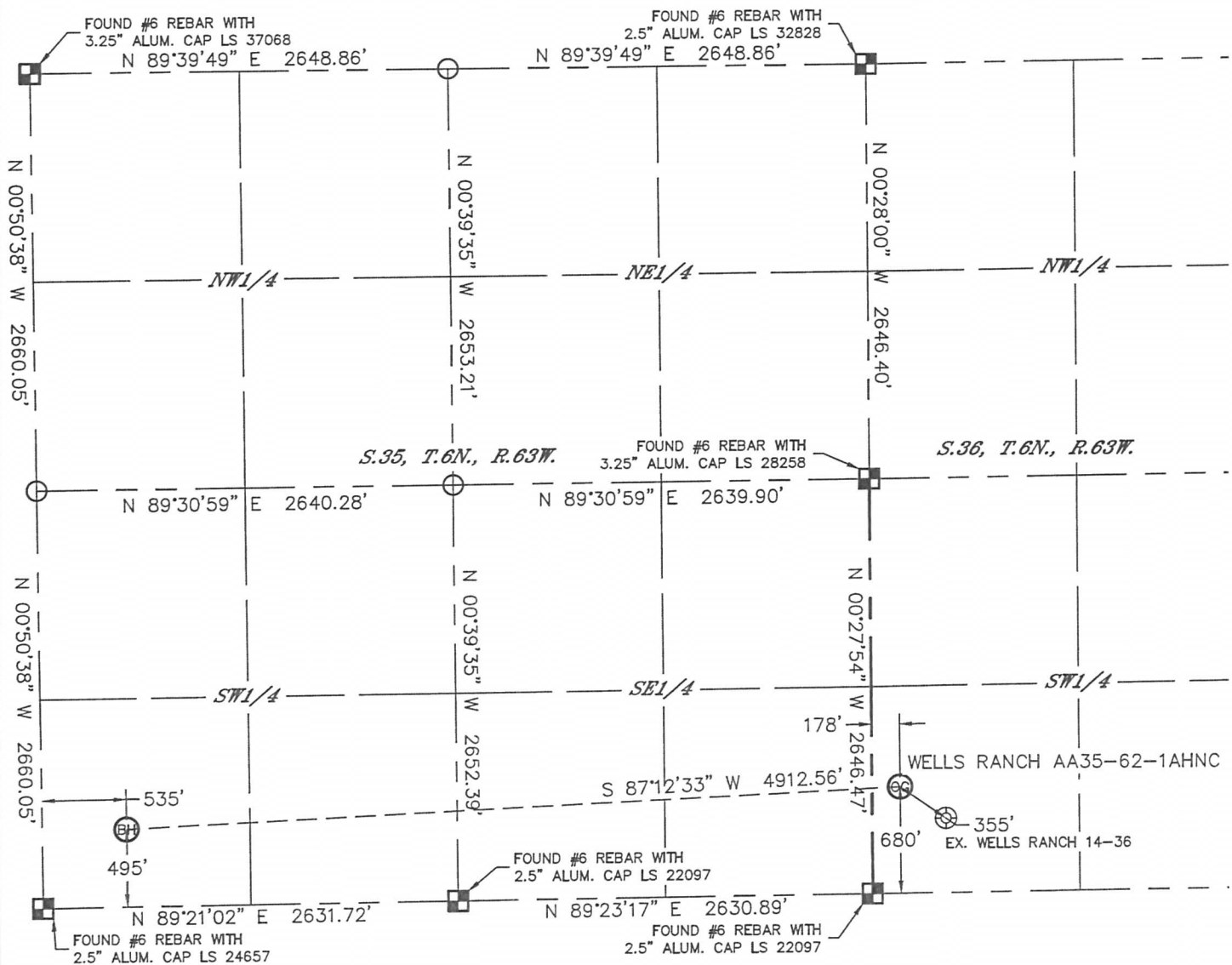


Lat40°, Inc. 1635 Foxtrail Drive, Suite 325 Loveland, CO 970-776-3321

WELL LOCATION CERTIFICATE

THIS MAP DOES NOT REPRESENT A BOUNDARY SURVEY

SECTION: 36
TOWNSHIP: 6N
RANGE: 63W



LEGEND

- = ALIQUOT MONUMENT AS DESCRIBED
- = CALCULATED POSITION

SHEET 2 OF 2

Brian T. Brinkman—On behalf of Lat40°, Inc.
Colorado Licensed Professional Land Surveyor No. 38175
DATE: 8/23/2013
PROJECT#: 2013028



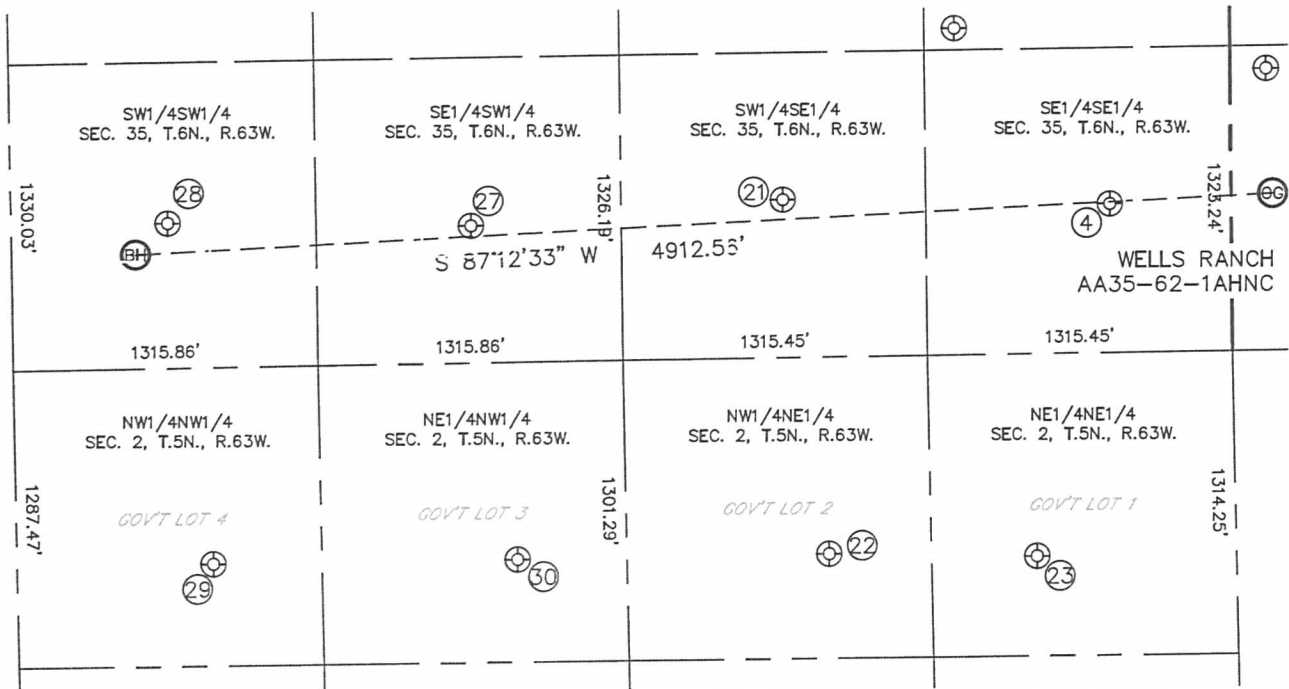


Lat40°, Inc. 1635 Foxtrail Drive, Suite 325 Loveland, CO 970-776-3321

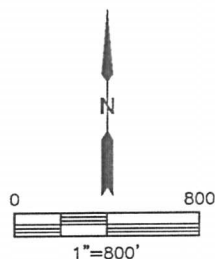
SITE SKETCH

WELLS RANCH AA35-62-1AHNC

SECTION: 36
TOWNSHIP: 6N
RANGE: 63W



WELL NO.	WELL NAME	SHL FOOTAGE				SHL LAT°	SHL LONG°	PDOP	ELEV (FT.)	1/4/1/4
4	WELLS RANCH USX AA 35-16	646	FSL	524	FEL	40.43740	-104.39663	1.5	4730	SESE
21	WELLS RANCH USX AA 35-15	686	FSL	1934	FEL	40.43752	-104.40169	1.9	4718	SWSE
22	WELLS RANCH 31-2	853	FNL	1758	FEL	40.43329	-104.40104	1.9	4712	NWNE
23	WELLS RANCH 31-2	878	FNL	860	FEL	40.43322	-104.39782	1.9	4702	NENE
27	WELLS RANCH USX AA 35-14	595	FSL	1985	FWL	40.43727	-104.40653	2.3	4758	SESW
28	WELLS RANCH 14-35	629	FSL	676	FWL	40.43737	-104.41123	1.7	4761	SWSW
29	WELLS RANCH 11-2	850	FNL	847	FWL	40.43331	-104.41059	1.7	4715	NWNW
30	WELLS RANCH 21-2	854	FNL	2160	FWL	40.43330	-104.40588	1.8	4707	NENW



DATE: 8/23/2013
PROJECT#: 2013028