

The Road to Excellence Starts with Safety

Sold To #: 300721		Ship To #: 2998113		Quote #:		Sales Order #: 900434740	
Customer: WPX ENERGY ROCKY MOUNTAIN LLC-EBUS				Customer Rep: Towers, Ron			
Well Name: RWF			Well #: 324-29		API/UWI #: 05-045-21659		
Field:		City (SAP): RIFLE		County/Parish: Garfield		State: Colorado	
Lat: N 39.49 deg. OR N 39 deg. 29 min. 24.349 secs.				Long: W 107.919 deg. OR W -108 deg. 4 min. 53.044 secs.			
Contractor: Nabors			Rig/Platform Name/Num: Nabors 573				
Job Purpose: Cement Surface Casing							
Well Type: Development Well			Job Type: Cement Surface Casing				
Sales Person: MAYO, MARK			Srvc Supervisor: ANDREWS, ANTHONY			MBU ID Emp #: 321604	

Job Personnel

HES Emp Name	Exp Hrs	Emp #	HES Emp Name	Exp Hrs	Emp #	HES Emp Name	Exp Hrs	Emp #
ANDERSON, ADAM S	6	456683	ANDREWS, ANTHONY Michael	6	321604	CAMPBELL, DAVID Arthur	6	544403
DEUSSEN, EDWARD Eric	6	485182						

Equipment

HES Unit #	Distance-1 way	HES Unit #	Distance-1 way	HES Unit #	Distance-1 way	HES Unit #	Distance-1 way

Job Hours

Date	On Location Hours	Operating Hours	Date	On Location Hours	Operating Hours	Date	On Location Hours	Operating Hours
5/14/13	4	1.5	5/15/13	2	2			

TOTAL Total is the sum of each column separately

Job				Job Times			
Formation Name				Date	Time	Time Zone	
Formation Depth (MD)	Top	Bottom		Called Out	14 - May - 2013	14:00	MST
Form Type		BHST		On Location	14 - May - 2013	18:00	MST
Job depth MD	1160. ft	Job Depth TVD	1160. ft	Job Started	14 - May - 2013	23:24	MST
Water Depth		Wk Ht Above Floor	4. ft	Job Completed	15 - May - 2013	00:19	MST
Perforation Depth (MD)	From	To		Departed Loc	15 - May - 2013	02:00	MST

Well Data

Description	New / Used	Max pressure psig	Size in	ID in	Weight lbm/ft	Thread	Grade	Top MD ft	Bottom MD ft	Top TVD ft	Bottom TVD ft

Tools and Accessories

Type	Size	Qty	Make	Depth	Type	Size	Qty	Make	Depth	Type	Size	Qty	Make
Guide Shoe					Packer					Top Plug			
Float Shoe					Bridge Plug					Bottom Plug			
Float Collar					Retainer					SSR plug set			
Insert Float										Plug Container			
Stage Tool										Centralizers			

Miscellaneous Materials

Gelling Agt		Conc		Surfactant		Conc		Acid Type		Qty		Conc	%
Treatment Fld		Conc		Inhibitor		Conc		Sand Type		Size		Qty	

Fluid Data

Stage/Plug #: 1													
Fluid #	Stage Type	Fluid Name			Qty	Qty uom	Mixing Density lbm/gal	Yield ft3/sk	Mix Fluid Gal/sk	Rate bbl/min	Total Mix Fluid Gal/sk		

Stage/Plug #: 1													
Fluid #	Stage Type	Fluid Name			Qty	Qty uom	Mixing Density lbm/gal	Yield ft3/sk	Mix Fluid Gal/sk	Rate bbl/min	Total Mix Fluid Gal/sk		

HALLIBURTON**Cementing Job Summary**

Stage/Plug #: 1									
1	Fresh Water Spacer		20.00	Bbl	.	.0	.0	.0	
2	VersaCem Lead Cement	VERSACEM (TM) SYSTEM (452010)	160.0	Sacks	12.3	2.38	13.75		13.75
3	VersaCem Tail Cement	VERSACEM (TM) SYSTEM (452010)	160.0	Sacks	12.8	2.11	11.75		11.75
4	Fresh Water Displacement		86.8	Bbl	.	.0	.0	.0	
Calculated Values		Pressures		Volumes					
Displacement	86.8	Shut In: Instant		Lost Returns	N	Cement Slurry	127.9	Pad	
Top Of Cement	SURFACE	5 Min		Cement Returns	25	Actual Displacement	86.8	Treatment	
Frac Gradient		15 Min		Spacers	20	Load and Breakdown		Total Job	234.7
Rates									
Circulating	RIG	Mixing	8	Displacement	10-2	Avg. Job	8		
Cement Left In Pipe	Amount	44 ft	Reason	Shoe Joint					
Frac Ring # 1 @	ID	Frac ring # 2 @	ID	Frac Ring # 3 @	ID	Frac Ring # 4 @	ID		
The Information Stated Herein Is Correct				Customer Representative Signature					

The Road to Excellence Starts with Safety

Sold To #: 300721		Ship To #: 2998113		Quote #:		Sales Order #: 900434740	
Customer: WPX ENERGY ROCKY MOUNTAIN LLC-EBUS				Customer Rep: Towers, Ron			
Well Name: RWF			Well #: 324-29			API/UWI #: 05-045-21659	
Field:		City (SAP): RIFLE		County/Parish: Garfield		State: Colorado	
Legal Description:							
Lat: N 39.49 deg. OR N 39 deg. 29 min. 24.349 secs.				Long: W 107.919 deg. OR W -108 deg. 4 min. 53.044 secs.			
Contractor: Nabors			Rig/Platform Name/Num: Nabors 573				
Job Purpose: Cement Surface Casing					Ticket Amount:		
Well Type: Development Well			Job Type: Cement Surface Casing				
Sales Person: MAYO, MARK			Srvc Supervisor: ANDREWS, ANTHONY			MBU ID Emp #: 321604	

Activity Description	Date/Time	Cht #	Rate bbl/min	Volume bbl		Pressure psig		Comments
				Stage	Total	Tubing	Casing	
Call Out	05/14/2013 14:00							
Pre-Convoy Safety Meeting	05/14/2013 16:30							
Crew Leave Yard	05/14/2013 16:35							
Arrive At Loc	05/14/2013 18:00							
Assessment Of Location Safety Meeting	05/14/2013 22:15							
Other	05/14/2013 22:25							SPOT EQUIPMENT
Pre-Rig Up Safety Meeting	05/14/2013 22:30							
Rig-Up Equipment	05/14/2013 22:35							
Pre-Job Safety Meeting	05/14/2013 23:00							
Start Job	05/14/2013 23:24							TD: 1160 TP: 1147 SJ: 44' MW: 10.0 PPG 9 5/8" 32.3#/FT CSG IN 13 1/2" OH
Test Lines	05/14/2013 23:25							3000 PSI TEST
Pump Spacer	05/14/2013 23:30		4	20			105.0	FRESH H2O SPACER
Pump Lead Cement	05/14/2013 23:38		8	67.8			127.0	160 SKS @ 12.3 PPG 2.38 YLD 13.75 GAL/SK H2O
Pump Tail Cement	05/14/2013 23:51		8	60.1			340.0	160 SKS @ 12.8 PPG 2.11 YLD 11.75 GAL/SK H2O
Shutdown	05/14/2013 23:59							

Sold To #: 300721

Ship To #: 2998113

Quote #:

Sales Order #: 900434740

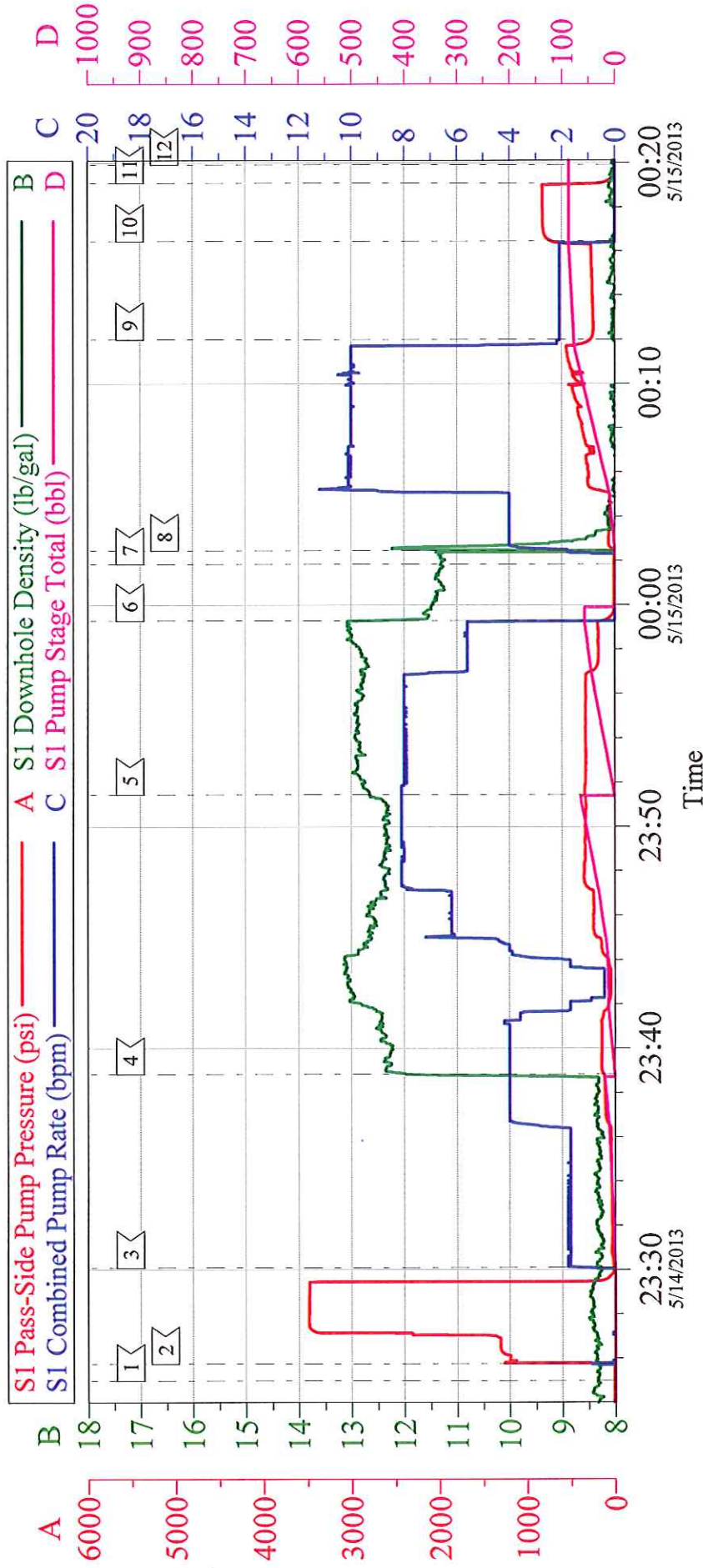
SUMMIT Version: 7.3.0079

Friday, May 24, 2013 04:53:00

Cementing Job Log

Activity Description	Date/Time	Cht #	Rate bbl/min	Volume bbl		Pressure psig		Comments
				Stage	Total	Tubing	Casing	
Drop Plug	05/15/2013 00:01							
Pump Displacement	05/15/2013 00:02		10		86.8		224.0	FRESH H2O DISPLACEMENT
Slow Rate	05/15/2013 00:12		2	76			278.0	
Bump Plug	05/15/2013 00:16		2	86.8			720.0	PLUG BUMPED AT CALCULATED DISPLACEMENT
Check Floats	05/15/2013 00:19							FLOATS HELD.
End Job	05/15/2013 00:19							
Post-Job Safety Meeting (Pre Rig-Down)	05/15/2013 00:25							GOOD CIRCULATION THROUGHOUT JOB. PIPE WAS LEFT STATIC THROUGHOUT JOB. CIRCULATED 25 BBLS CEMENT TO SURFACE. 30 # SUGAR USED. NO ADD HOURS CHARGED. WASHED UP ON TOP OF PLUG AS PER CUSTOMER REQUEST.
Rig-Down Equipment	05/15/2013 00:30							
Pre-Convoy Safety Meeting	05/15/2013 01:55							
Crew Leave Location	05/15/2013 02:00							THANK YOU FOR CHOOSING HALLIBURTON CEMENTING OF GRAND JUNCTION, COLORADO ANTHONY ANDREWS AND CREW

WPX - RWF 324-29 9 5/8" SURFACE



Local Event Log				
Intersection	SPPP	Intersection	SPPP	
1 START JOB	5/14/2013 23:24:58	2 TEST LINES	5/14/2013 23:25:45	21.95
3 PUMP SPACER	5/14/2013 23:30:05	4 PUMP LEAD CEMENT	5/14/2013 23:38:49	127.4
5 PUMP TAIL CEMENT	5/14/2013 23:51:26	6 SHUTDOWN	5/14/2013 23:59:17	129.1
7 DROP PLUG	5/15/2013 00:01:49	8 PUMP DISPLACEMENT	5/15/2013 00:02:26	14.49
9 SLOW RATE	5/15/2013 00:12:00	10 BUMP PLUG	5/15/2013 00:16:27	720.8
11 CHECK FLOATS	5/15/2013 00:19:05	12 END JOB	5/15/2013 00:19:54	3.000

Customer: WPX	Job Date: 14-May-2013	Sales Order #: 900434740
Well Description: RWF 324-29	Job Type: SURFACE	ADC Used: YES
Company Rep: RON TOWERS	Cement Supervisor: ANTHONY ANDREWS	Elite #3: ADAM ANDERSON