

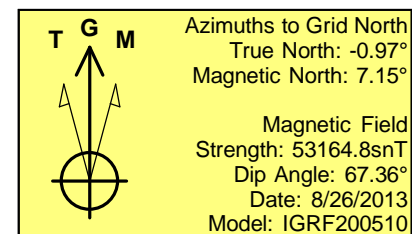
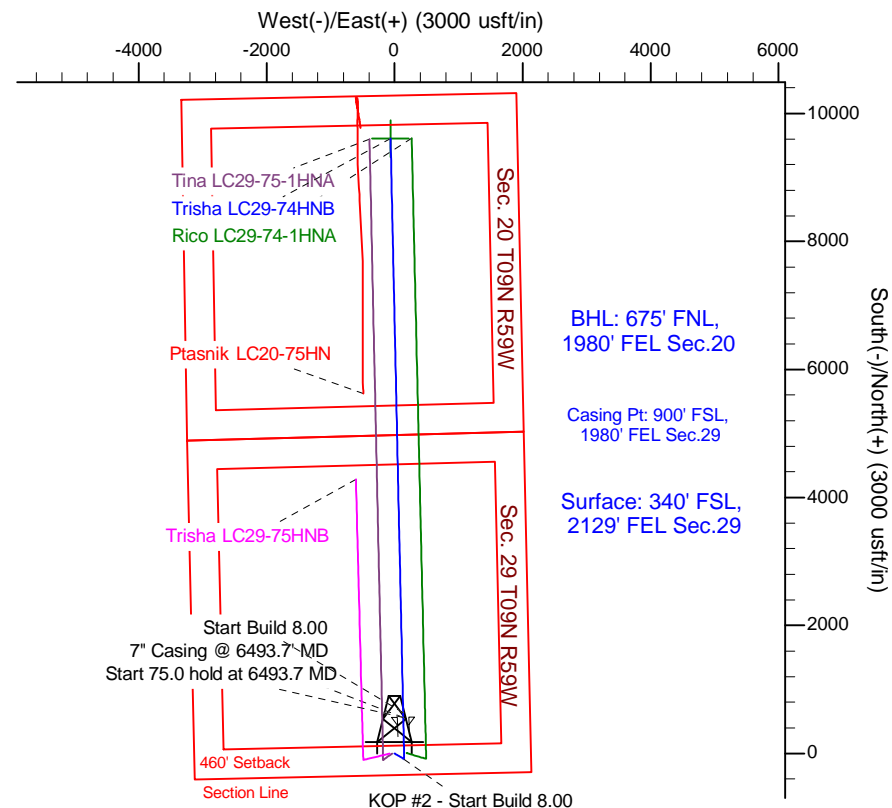
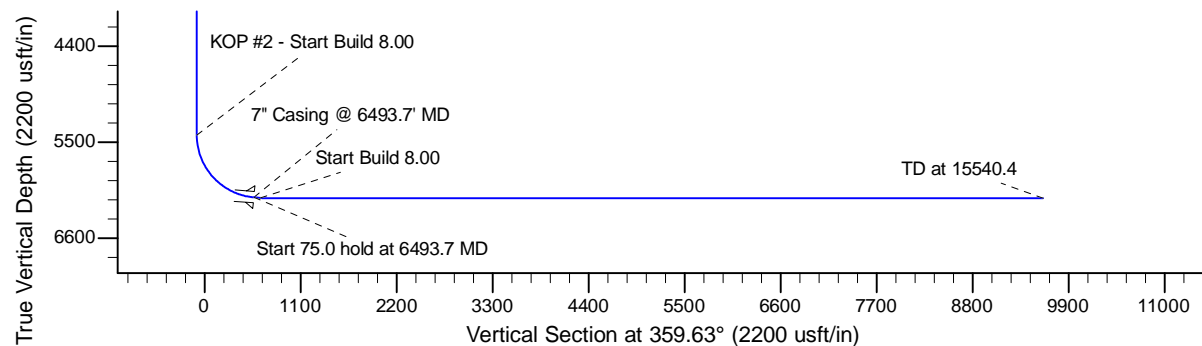
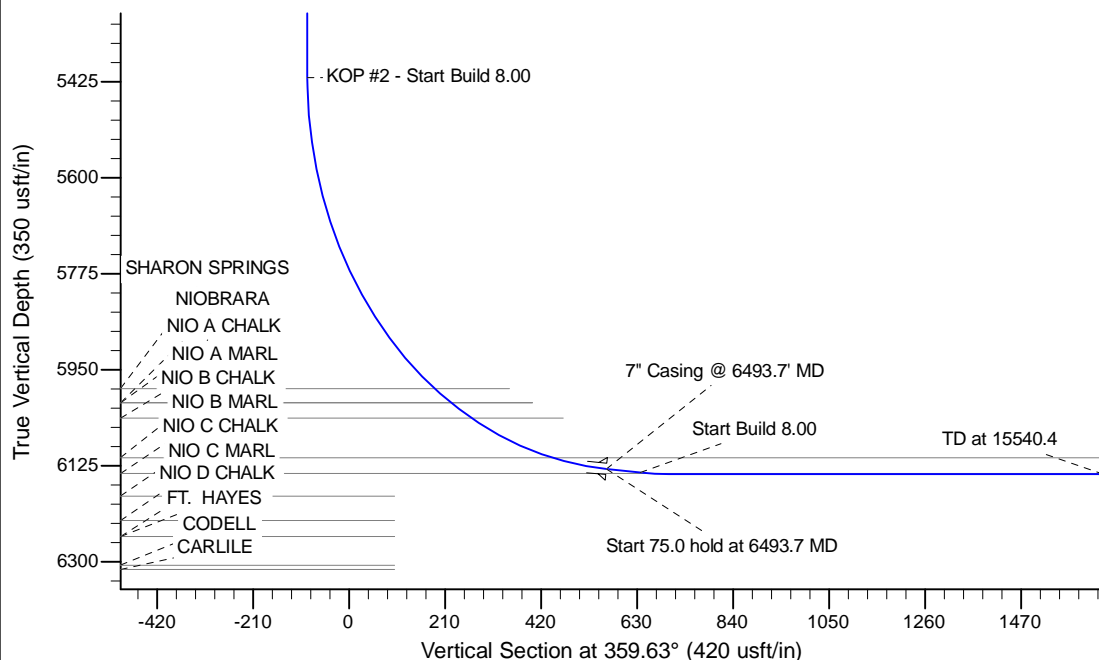
Project: Wattenberg Field
 Site: LC (Sec.29-T09N-R59W) Weld County, CO
 Well: Trisha LC29-74HNB
 Wellbore: Original Drilling
 Design: APD - Rev 0

Northern Region Drilling - Working

Geodetic System: US State Plane 1983
 Datum: North American Datum 1983
 Ellipsoid: GRS 1980
 Zone: Colorado Northern Zone
 System Datum: Mean Sea Level

SECTION DETAILS

Sec	MD	Inc	Azi	TVD	+N/-S	+E/-W	Dleg	TFace	VSect	Target
1	0.0	0.00	0.00	0.0	0.0	0.0	0.00	0.00	0.0	
2	1800.0	0.00	0.00	1800.0	0.0	0.0	0.00	0.00	0.0	
3	2400.4	12.01	120.96	2396.1	-32.3	53.8	2.00	120.96	-32.6	
4	2638.5	12.01	120.96	2628.9	-57.7	96.2	0.00	0.00	-58.4	
5	3239.0	0.00	0.00	3225.0	-90.0	150.0	2.00	180.00	-91.0	
6	5431.2	0.00	0.00	5417.3	-90.0	150.0	0.00	0.00	-91.0	
7	6493.7	85.00	358.74	6130.7	563.6	135.7	8.00	358.74	562.7	
8	6568.7	85.00	358.74	6137.3	638.3	134.0	0.00	0.00	637.4	
9	6631.2	90.00	358.74	6140.0	700.7	132.7	8.00	0.00	699.8	
10	15540.4	90.00	358.74	6140.0	9607.8	-62.8	0.00	0.00	9608.0	Trisha LC29-74HNB BHL 675' FNL, 1980' FEL



WELL DETAILS: Trisha LC29-74HNB

Ground Level: 4872.0				
	Northing	Easting	Latitude	Longitude
0.0	0.0	1506809.47	3415782.74	40.714930
				-104.000080

Plan: APD - Rev 0 (Trisha LC29-74HNB/Original Drilling)

Created By: Shailey Jewell Date: 10:04, August 28 2013
 Checked: _____ Date: _____
 Reviewed: _____ Date: _____
 Approved: _____ Date: _____

Northern Region Drilling - Working

Wattenberg Field

LC (09N-59W)

Trisha LC29-74HNB

Original Drilling

Plan: APD - Rev 0

Standard Planning Report

28 August, 2013

Noble Energy Inc

Planning Report

Database:	EDM Production	Local Co-ordinate Reference:	Well Trisha LC29-74HNB
Company:	Northern Region Drilling - Working	TVD Reference:	WELL @ 4902.0usft (Original Well Elev)
Project:	Wattenberg Field	MD Reference:	WELL @ 4902.0usft (Original Well Elev)
Site:	LC (09N-59W)	North Reference:	Grid
Well:	Trisha LC29-74HNB	Survey Calculation Method:	Minimum Curvature
Wellbore:	Original Drilling		
Design:	APD - Rev 0		

Project	Wattenberg Field, Weld County CO		
Map System:	US State Plane 1983	System Datum:	Mean Sea Level
Geo Datum:	North American Datum 1983		
Map Zone:	Colorado Northern Zone		Using geodetic scale factor

Site		LC (09N-59W)			
Site Position:		Northing:	1,527,709.69 usft	Latitude:	40.771436
From:	Lat/Long	Easting:	3,433,728.00 usft	Longitude:	-103.934025
Position Uncertainty:	0.0 usft	Slot Radius:	13-3/16 "	Grid Convergence:	1.01 °

Well	Trisha LC29-74HNB					
Well Position	+N/-S	-20,900.3 usft	Northing:	1,506,809.47 usft	Latitude:	40.714930
	+E/-W	-17,945.3 usft	Easting:	3,415,782.74 usft	Longitude:	-104.000080
Position Uncertainty		0.0 usft	Wellhead Elevation:		Ground Level:	4,872.0 usft

Wellbore	Original Drilling				
Magnetics	Model Name	Sample Date	Declination (°)	Dip Angle (°)	Field Strength (nT)
	IGRF200510	8/26/2013	8.12	67.36	53,165

Design	APD - Rev 0			
Audit Notes:				
Version:	Phase:	PROTOTYPE	Tie On Depth:	0.0
Vertical Section:	Depth From (TVD) (usft)	+N/-S (usft)	+E/-W (usft)	Direction (°)
	0.0	0.0	0.0	359.63

Plan Sections										
Measured Depth (usft)	Inclination (°)	Azimuth (°)	Vertical Depth (usft)	+N/-S (usft)	+E/-W (usft)	Dogleg Rate (°/100usft)	Build Rate (°/100usft)	Turn Rate (°/100usft)	TFO (°)	Target
0.0	0.00	0.00	0.0	0.0	0.0	0.00	0.00	0.00	0.00	
1,800.0	0.00	0.00	1,800.0	0.0	0.0	0.00	0.00	0.00	0.00	
2,400.4	12.01	120.96	2,396.1	-32.3	53.8	2.00	2.00	0.00	120.96	
2,638.5	12.01	120.96	2,628.9	-57.7	96.2	0.00	0.00	0.00	0.00	
3,239.0	0.00	0.00	3,225.0	-90.0	150.0	2.00	-2.00	0.00	180.00	
5,431.2	0.00	0.00	5,417.3	-90.0	150.0	0.00	0.00	0.00	0.00	
6,493.7	85.00	358.74	6,130.7	563.6	135.7	8.00	8.00	0.00	358.74	
6,568.7	85.00	358.74	6,137.3	638.3	134.0	0.00	0.00	0.00	0.00	
6,631.2	90.00	358.74	6,140.0	700.7	132.7	8.00	8.00	0.00	0.00	
15,540.4	90.00	358.74	6,140.0	9,607.8	-62.8	0.00	0.00	0.00	0.00	Trisha LC29-74HNB E

Noble Energy Inc

Planning Report

Database:	EDM Production	Local Co-ordinate Reference:	Well Trisha LC29-74HNB
Company:	Northern Region Drilling - Working	TVD Reference:	WELL @ 4902.0usft (Original Well Elev)
Project:	Wattenberg Field	MD Reference:	WELL @ 4902.0usft (Original Well Elev)
Site:	LC (09N-59W)	North Reference:	Grid
Well:	Trisha LC29-74HNB	Survey Calculation Method:	Minimum Curvature
Wellbore:	Original Drilling		
Design:	APD - Rev 0		

Planned Survey									
Measured Depth (usft)	Inclination (°)	Azimuth (°)	Vertical Depth (usft)	+N/-S (usft)	+E/-W (usft)	Vertical Section (usft)	Dogleg Rate (°/100usft)	Build Rate (°/100usft)	Turn Rate (°/100usft)
0.0	0.00	0.00	0.0	0.0	0.0	0.0	0.00	0.00	0.00
50.0	0.00	0.00	50.0	0.0	0.0	0.0	0.00	0.00	0.00
100.0	0.00	0.00	100.0	0.0	0.0	0.0	0.00	0.00	0.00
150.0	0.00	0.00	150.0	0.0	0.0	0.0	0.00	0.00	0.00
200.0	0.00	0.00	200.0	0.0	0.0	0.0	0.00	0.00	0.00
250.0	0.00	0.00	250.0	0.0	0.0	0.0	0.00	0.00	0.00
300.0	0.00	0.00	300.0	0.0	0.0	0.0	0.00	0.00	0.00
350.0	0.00	0.00	350.0	0.0	0.0	0.0	0.00	0.00	0.00
400.0	0.00	0.00	400.0	0.0	0.0	0.0	0.00	0.00	0.00
450.0	0.00	0.00	450.0	0.0	0.0	0.0	0.00	0.00	0.00
500.0	0.00	0.00	500.0	0.0	0.0	0.0	0.00	0.00	0.00
550.0	0.00	0.00	550.0	0.0	0.0	0.0	0.00	0.00	0.00
600.0	0.00	0.00	600.0	0.0	0.0	0.0	0.00	0.00	0.00
650.0	0.00	0.00	650.0	0.0	0.0	0.0	0.00	0.00	0.00
700.0	0.00	0.00	700.0	0.0	0.0	0.0	0.00	0.00	0.00
750.0	0.00	0.00	750.0	0.0	0.0	0.0	0.00	0.00	0.00
800.0	0.00	0.00	800.0	0.0	0.0	0.0	0.00	0.00	0.00
850.0	0.00	0.00	850.0	0.0	0.0	0.0	0.00	0.00	0.00
900.0	0.00	0.00	900.0	0.0	0.0	0.0	0.00	0.00	0.00
950.0	0.00	0.00	950.0	0.0	0.0	0.0	0.00	0.00	0.00
1,000.0	0.00	0.00	1,000.0	0.0	0.0	0.0	0.00	0.00	0.00
1,050.0	0.00	0.00	1,050.0	0.0	0.0	0.0	0.00	0.00	0.00
1,100.0	0.00	0.00	1,100.0	0.0	0.0	0.0	0.00	0.00	0.00
1,150.0	0.00	0.00	1,150.0	0.0	0.0	0.0	0.00	0.00	0.00
1,200.0	0.00	0.00	1,200.0	0.0	0.0	0.0	0.00	0.00	0.00
1,250.0	0.00	0.00	1,250.0	0.0	0.0	0.0	0.00	0.00	0.00
1,300.0	0.00	0.00	1,300.0	0.0	0.0	0.0	0.00	0.00	0.00
1,303.0	0.00	0.00	1,303.0	0.0	0.0	0.0	0.00	0.00	0.00
PIERRE									
1,350.0	0.00	0.00	1,350.0	0.0	0.0	0.0	0.00	0.00	0.00
1,400.0	0.00	0.00	1,400.0	0.0	0.0	0.0	0.00	0.00	0.00
1,450.0	0.00	0.00	1,450.0	0.0	0.0	0.0	0.00	0.00	0.00
1,500.0	0.00	0.00	1,500.0	0.0	0.0	0.0	0.00	0.00	0.00
1,550.0	0.00	0.00	1,550.0	0.0	0.0	0.0	0.00	0.00	0.00
1,600.0	0.00	0.00	1,600.0	0.0	0.0	0.0	0.00	0.00	0.00
1,650.0	0.00	0.00	1,650.0	0.0	0.0	0.0	0.00	0.00	0.00
1,700.0	0.00	0.00	1,700.0	0.0	0.0	0.0	0.00	0.00	0.00
1,750.0	0.00	0.00	1,750.0	0.0	0.0	0.0	0.00	0.00	0.00
1,800.0	0.00	0.00	1,800.0	0.0	0.0	0.0	0.00	0.00	0.00
KOP - Start Build 2.00									
1,850.0	1.00	120.96	1,850.0	-0.2	0.4	-0.2	2.00	2.00	0.00
1,900.0	2.00	120.96	1,900.0	-0.9	1.5	-0.9	2.00	2.00	0.00
1,950.0	3.00	120.96	1,949.9	-2.0	3.4	-2.0	2.00	2.00	0.00
2,000.0	4.00	120.96	1,999.8	-3.6	6.0	-3.6	2.00	2.00	0.00
2,050.0	5.00	120.96	2,049.7	-5.6	9.3	-5.7	2.00	2.00	0.00
2,100.0	6.00	120.96	2,099.5	-8.1	13.5	-8.2	2.00	2.00	0.00
2,150.0	7.00	120.96	2,149.1	-11.0	18.3	-11.1	2.00	2.00	0.00
2,200.0	8.00	120.96	2,198.7	-14.3	23.9	-14.5	2.00	2.00	0.00
2,250.0	9.00	120.96	2,248.2	-18.1	30.2	-18.3	2.00	2.00	0.00
2,300.0	10.00	120.96	2,297.5	-22.4	37.3	-22.6	2.00	2.00	0.00
2,350.0	11.00	120.96	2,346.6	-27.1	45.1	-27.4	2.00	2.00	0.00
2,400.0	12.00	120.96	2,395.6	-32.2	53.7	-32.6	2.00	2.00	0.00
2,400.4	12.01	120.96	2,396.1	-32.3	53.8	-32.6	2.00	2.00	0.00
2,450.0	12.01	120.96	2,444.5	-37.6	62.6	-38.0	0.00	0.00	0.00

Noble Energy Inc

Planning Report

Database:	EDM Production	Local Co-ordinate Reference:	Well Trisha LC29-74HNB
Company:	Northern Region Drilling - Working	TVD Reference:	WELL @ 4902.0usft (Original Well Elev)
Project:	Wattenberg Field	MD Reference:	WELL @ 4902.0usft (Original Well Elev)
Site:	LC (09N-59W)	North Reference:	Grid
Well:	Trisha LC29-74HNB	Survey Calculation Method:	Minimum Curvature
Wellbore:	Original Drilling		
Design:	APD - Rev 0		

Planned Survey									
Measured Depth (usft)	Inclination (°)	Azimuth (°)	Vertical Depth (usft)	+N/-S (usft)	+E/-W (usft)	Vertical Section (usft)	Dogleg Rate (°/100usft)	Build Rate (°/100usft)	Turn Rate (°/100usft)
2,500.0	12.01	120.96	2,493.4	-42.9	71.5	-43.4	0.00	0.00	0.00
2,550.0	12.01	120.96	2,542.3	-48.3	80.4	-48.8	0.00	0.00	0.00
2,600.0	12.01	120.96	2,591.2	-53.6	89.4	-54.2	0.00	0.00	0.00
2,638.5	12.01	120.96	2,628.9	-57.7	96.2	-58.4	0.00	0.00	0.00
Start Drop -2.00									
2,650.0	11.78	120.96	2,640.2	-59.0	98.3	-59.6	1.99	-1.99	0.00
2,700.0	10.78	120.96	2,689.2	-64.0	106.7	-64.7	2.00	-2.00	0.00
2,750.0	9.78	120.96	2,738.4	-68.6	114.3	-69.3	2.00	-2.00	0.00
2,800.0	8.78	120.96	2,787.7	-72.7	121.2	-73.5	2.00	-2.00	0.00
2,850.0	7.78	120.96	2,837.2	-76.4	127.4	-77.3	2.00	-2.00	0.00
2,900.0	6.78	120.96	2,886.8	-79.7	132.8	-80.6	2.00	-2.00	0.00
2,950.0	5.78	120.96	2,936.5	-82.5	137.5	-83.4	2.00	-2.00	0.00
3,000.0	4.78	120.96	2,986.3	-84.9	141.5	-85.8	2.00	-2.00	0.00
3,050.0	3.78	120.96	3,036.2	-86.8	144.7	-87.7	2.00	-2.00	0.00
3,100.0	2.78	120.96	3,086.1	-88.3	147.1	-89.2	2.00	-2.00	0.00
3,150.0	1.78	120.96	3,136.0	-89.3	148.8	-90.3	2.00	-2.00	0.00
3,200.0	0.78	120.96	3,186.0	-89.9	149.8	-90.8	2.00	-2.00	0.00
3,239.0	0.00	0.00	3,225.0	-90.0	150.0	-91.0	2.00	-2.00	0.00
3,250.0	0.00	0.00	3,236.0	-90.0	150.0	-91.0	0.00	0.00	0.00
3,300.0	0.00	0.00	3,286.0	-90.0	150.0	-91.0	0.00	0.00	0.00
3,350.0	0.00	0.00	3,336.0	-90.0	150.0	-91.0	0.00	0.00	0.00
3,400.0	0.00	0.00	3,386.0	-90.0	150.0	-91.0	0.00	0.00	0.00
3,448.0	0.00	0.00	3,434.0	-90.0	150.0	-91.0	0.00	0.00	0.00
PARKMAN									
3,450.0	0.00	0.00	3,436.0	-90.0	150.0	-91.0	0.00	0.00	0.00
3,500.0	0.00	0.00	3,486.0	-90.0	150.0	-91.0	0.00	0.00	0.00
3,550.0	0.00	0.00	3,536.0	-90.0	150.0	-91.0	0.00	0.00	0.00
3,600.0	0.00	0.00	3,586.0	-90.0	150.0	-91.0	0.00	0.00	0.00
3,650.0	0.00	0.00	3,636.0	-90.0	150.0	-91.0	0.00	0.00	0.00
3,700.0	0.00	0.00	3,686.0	-90.0	150.0	-91.0	0.00	0.00	0.00
3,750.0	0.00	0.00	3,736.0	-90.0	150.0	-91.0	0.00	0.00	0.00
3,800.0	0.00	0.00	3,786.0	-90.0	150.0	-91.0	0.00	0.00	0.00
3,850.0	0.00	0.00	3,836.0	-90.0	150.0	-91.0	0.00	0.00	0.00
3,900.0	0.00	0.00	3,886.0	-90.0	150.0	-91.0	0.00	0.00	0.00
3,950.0	0.00	0.00	3,936.0	-90.0	150.0	-91.0	0.00	0.00	0.00
4,000.0	0.00	0.00	3,986.0	-90.0	150.0	-91.0	0.00	0.00	0.00
4,050.0	0.00	0.00	4,036.0	-90.0	150.0	-91.0	0.00	0.00	0.00
4,100.0	0.00	0.00	4,086.0	-90.0	150.0	-91.0	0.00	0.00	0.00
4,118.0	0.00	0.00	4,104.0	-90.0	150.0	-91.0	0.00	0.00	0.00
SUSSEX									
4,150.0	0.00	0.00	4,136.0	-90.0	150.0	-91.0	0.00	0.00	0.00
4,200.0	0.00	0.00	4,186.0	-90.0	150.0	-91.0	0.00	0.00	0.00
4,250.0	0.00	0.00	4,236.0	-90.0	150.0	-91.0	0.00	0.00	0.00
4,300.0	0.00	0.00	4,286.0	-90.0	150.0	-91.0	0.00	0.00	0.00
4,350.0	0.00	0.00	4,336.0	-90.0	150.0	-91.0	0.00	0.00	0.00
4,400.0	0.00	0.00	4,386.0	-90.0	150.0	-91.0	0.00	0.00	0.00
4,450.0	0.00	0.00	4,436.0	-90.0	150.0	-91.0	0.00	0.00	0.00
4,494.0	0.00	0.00	4,480.0	-90.0	150.0	-91.0	0.00	0.00	0.00
SHANNON									
4,500.0	0.00	0.00	4,486.0	-90.0	150.0	-91.0	0.00	0.00	0.00
4,550.0	0.00	0.00	4,536.0	-90.0	150.0	-91.0	0.00	0.00	0.00
4,600.0	0.00	0.00	4,586.0	-90.0	150.0	-91.0	0.00	0.00	0.00
4,650.0	0.00	0.00	4,636.0	-90.0	150.0	-91.0	0.00	0.00	0.00

Noble Energy Inc

Planning Report

Database:	EDM Production	Local Co-ordinate Reference:	Well Trisha LC29-74HNB
Company:	Northern Region Drilling - Working	TVD Reference:	WELL @ 4902.0usft (Original Well Elev)
Project:	Wattenberg Field	MD Reference:	WELL @ 4902.0usft (Original Well Elev)
Site:	LC (09N-59W)	North Reference:	Grid
Well:	Trisha LC29-74HNB	Survey Calculation Method:	Minimum Curvature
Wellbore:	Original Drilling		
Design:	APD - Rev 0		

Planned Survey									
Measured Depth (usft)	Inclination (°)	Azimuth (°)	Vertical Depth (usft)	+N/-S (usft)	+E/-W (usft)	Vertical Section (usft)	Dogleg Rate (°/100usft)	Build Rate (°/100usft)	Turn Rate (°/100usft)
4,700.0	0.00	0.00	4,686.0	-90.0	150.0	-91.0	0.00	0.00	0.00
4,750.0	0.00	0.00	4,736.0	-90.0	150.0	-91.0	0.00	0.00	0.00
4,800.0	0.00	0.00	4,786.0	-90.0	150.0	-91.0	0.00	0.00	0.00
4,850.0	0.00	0.00	4,836.0	-90.0	150.0	-91.0	0.00	0.00	0.00
4,900.0	0.00	0.00	4,886.0	-90.0	150.0	-91.0	0.00	0.00	0.00
4,950.0	0.00	0.00	4,936.0	-90.0	150.0	-91.0	0.00	0.00	0.00
5,000.0	0.00	0.00	4,986.0	-90.0	150.0	-91.0	0.00	0.00	0.00
5,050.0	0.00	0.00	5,036.0	-90.0	150.0	-91.0	0.00	0.00	0.00
5,100.0	0.00	0.00	5,086.0	-90.0	150.0	-91.0	0.00	0.00	0.00
5,150.0	0.00	0.00	5,136.0	-90.0	150.0	-91.0	0.00	0.00	0.00
5,200.0	0.00	0.00	5,186.0	-90.0	150.0	-91.0	0.00	0.00	0.00
5,250.0	0.00	0.00	5,236.0	-90.0	150.0	-91.0	0.00	0.00	0.00
5,300.0	0.00	0.00	5,286.0	-90.0	150.0	-91.0	0.00	0.00	0.00
5,313.0	0.00	0.00	5,299.0	-90.0	150.0	-91.0	0.00	0.00	0.00
TEEPEE BUTTES									
5,350.0	0.00	0.00	5,336.0	-90.0	150.0	-91.0	0.00	0.00	0.00
5,400.0	0.00	0.00	5,386.0	-90.0	150.0	-91.0	0.00	0.00	0.00
5,431.2	0.00	0.00	5,417.2	-90.0	150.0	-91.0	0.00	0.00	0.00
KOP #2 - Start Build 8.00									
5,450.0	1.50	358.74	5,436.0	-89.8	150.0	-90.7	7.98	7.98	0.00
5,500.0	5.50	358.74	5,485.9	-86.7	149.9	-87.7	8.00	8.00	0.00
5,550.0	9.50	358.74	5,535.5	-80.2	149.8	-81.2	8.00	8.00	0.00
5,600.0	13.50	358.74	5,584.5	-70.2	149.6	-71.2	8.00	8.00	0.00
5,650.0	17.50	358.74	5,632.6	-56.9	149.3	-57.8	8.00	8.00	0.00
5,700.0	21.50	358.74	5,679.8	-40.2	148.9	-41.1	8.00	8.00	0.00
5,750.0	25.50	358.74	5,725.6	-20.2	148.5	-21.2	8.00	8.00	0.00
5,800.0	29.50	358.74	5,769.9	2.8	148.0	1.9	8.00	8.00	0.00
5,850.0	33.50	358.74	5,812.6	28.9	147.4	28.0	8.00	8.00	0.00
5,900.0	37.50	358.74	5,853.3	58.0	146.8	57.0	8.00	8.00	0.00
5,950.0	41.50	358.74	5,891.8	89.8	146.1	88.8	8.00	8.00	0.00
6,000.0	45.50	358.74	5,928.1	124.2	145.3	123.2	8.00	8.00	0.00
6,050.0	49.50	358.74	5,961.9	161.0	144.5	160.1	8.00	8.00	0.00
6,085.1	52.31	358.74	5,984.0	188.2	143.9	187.3	8.00	8.00	0.00
SHARON SPRINGS									
6,100.0	53.50	358.74	5,993.0	200.1	143.6	199.2	8.00	8.00	0.00
6,129.4	55.85	358.74	6,010.0	224.1	143.1	223.2	8.00	8.00	0.00
NIOBRARA - NIO A CHALK									
6,150.0	57.50	358.74	6,021.3	241.3	142.7	240.4	8.00	8.00	0.00
6,182.2	60.08	358.74	6,038.0	268.9	142.1	267.9	8.00	8.00	0.00
NIO A MARL									
6,200.0	61.50	358.74	6,046.7	284.4	141.8	283.4	8.00	8.00	0.00
6,250.0	65.50	358.74	6,069.0	329.1	140.8	328.2	8.00	8.00	0.00
6,300.0	69.50	358.74	6,088.1	375.3	139.8	374.3	8.00	8.00	0.00
6,350.0	73.50	358.74	6,104.0	422.7	138.8	421.7	8.00	8.00	0.00
6,372.4	75.29	358.74	6,110.0	444.2	138.3	443.3	8.00	8.00	0.00
NIO B CHALK									
6,400.0	77.50	358.74	6,116.5	471.0	137.7	470.1	8.00	8.00	0.00
6,450.0	81.50	358.74	6,125.6	520.2	136.6	519.3	8.00	8.00	0.00
6,493.7	85.00	358.74	6,130.7	563.6	135.7	562.7	8.00	8.00	0.00
Start 75.0 hold at 6493.7 MD - 7" Casing @ 6493.7' MD									
6,500.0	85.00	358.74	6,131.3	569.8	135.5	568.9	0.06	0.06	0.00
6,550.0	85.00	358.74	6,135.6	619.6	134.4	618.8	0.00	0.00	0.00
6,568.7	85.00	358.74	6,137.3	638.3	134.0	637.4	0.00	0.00	0.00

Noble Energy Inc

Planning Report

Database:	EDM Production	Local Co-ordinate Reference:	Well Trisha LC29-74HNB
Company:	Northern Region Drilling - Working	TVD Reference:	WELL @ 4902.0usft (Original Well Elev)
Project:	Wattenberg Field	MD Reference:	WELL @ 4902.0usft (Original Well Elev)
Site:	LC (09N-59W)	North Reference:	Grid
Well:	Trisha LC29-74HNB	Survey Calculation Method:	Minimum Curvature
Wellbore:	Original Drilling		
Design:	APD - Rev 0		

Planned Survey										
Measured Depth (usft)	Inclination (°)	Azimuth (°)	Vertical Depth (usft)	+N/-S (usft)	+E/-W (usft)	Vertical Section (usft)	Dogleg Rate (°/100usft)	Build Rate (°/100usft)	Turn Rate (°/100usft)	
Start Build 8.00										
6,593.4	86.97	358.74	6,139.0	662.9	133.5	662.0	7.98	7.98	0.00	
NIO B MARL										
6,600.0	87.50	358.74	6,139.3	669.5	133.3	668.6	8.00	8.00	0.00	
6,631.2	90.00	358.74	6,140.0	700.7	132.7	699.8	8.00	8.00	0.00	
6,650.0	90.00	358.74	6,140.0	719.5	132.2	718.6	0.00	0.00	0.00	
6,700.0	90.00	358.74	6,140.0	769.5	131.1	768.6	0.00	0.00	0.00	
6,750.0	90.00	358.74	6,140.0	819.4	130.0	818.6	0.00	0.00	0.00	
6,800.0	90.00	358.74	6,140.0	869.4	129.0	868.6	0.00	0.00	0.00	
6,850.0	90.00	358.74	6,140.0	919.4	127.9	918.6	0.00	0.00	0.00	
6,900.0	90.00	358.74	6,140.0	969.4	126.8	968.6	0.00	0.00	0.00	
6,950.0	90.00	358.74	6,140.0	1,019.4	125.7	1,018.6	0.00	0.00	0.00	
7,000.0	90.00	358.74	6,140.0	1,069.4	124.6	1,068.5	0.00	0.00	0.00	
7,050.0	90.00	358.74	6,140.0	1,119.4	123.5	1,118.5	0.00	0.00	0.00	
7,100.0	90.00	358.74	6,140.0	1,169.4	122.4	1,168.5	0.00	0.00	0.00	
7,150.0	90.00	358.74	6,140.0	1,219.3	121.3	1,218.5	0.00	0.00	0.00	
7,200.0	90.00	358.74	6,140.0	1,269.3	120.2	1,268.5	0.00	0.00	0.00	
7,250.0	90.00	358.74	6,140.0	1,319.3	119.1	1,318.5	0.00	0.00	0.00	
7,300.0	90.00	358.74	6,140.0	1,369.3	118.0	1,368.5	0.00	0.00	0.00	
7,350.0	90.00	358.74	6,140.0	1,419.3	116.9	1,418.5	0.00	0.00	0.00	
7,400.0	90.00	358.74	6,140.0	1,469.3	115.8	1,468.5	0.00	0.00	0.00	
7,450.0	90.00	358.74	6,140.0	1,519.3	114.7	1,518.5	0.00	0.00	0.00	
7,500.0	90.00	358.74	6,140.0	1,569.3	113.6	1,568.5	0.00	0.00	0.00	
7,550.0	90.00	358.74	6,140.0	1,619.3	112.5	1,618.5	0.00	0.00	0.00	
7,600.0	90.00	358.74	6,140.0	1,669.2	111.4	1,668.5	0.00	0.00	0.00	
7,650.0	90.00	358.74	6,140.0	1,719.2	110.3	1,718.5	0.00	0.00	0.00	
7,700.0	90.00	358.74	6,140.0	1,769.2	109.2	1,768.5	0.00	0.00	0.00	
7,750.0	90.00	358.74	6,140.0	1,819.2	108.1	1,818.5	0.00	0.00	0.00	
7,800.0	90.00	358.74	6,140.0	1,869.2	107.0	1,868.5	0.00	0.00	0.00	
7,850.0	90.00	358.74	6,140.0	1,919.2	105.9	1,918.4	0.00	0.00	0.00	
7,900.0	90.00	358.74	6,140.0	1,969.2	104.8	1,968.4	0.00	0.00	0.00	
7,950.0	90.00	358.74	6,140.0	2,019.2	103.7	2,018.4	0.00	0.00	0.00	
8,000.0	90.00	358.74	6,140.0	2,069.1	102.6	2,068.4	0.00	0.00	0.00	
8,050.0	90.00	358.74	6,140.0	2,119.1	101.5	2,118.4	0.00	0.00	0.00	
8,100.0	90.00	358.74	6,140.0	2,169.1	100.4	2,168.4	0.00	0.00	0.00	
8,150.0	90.00	358.74	6,140.0	2,219.1	99.3	2,218.4	0.00	0.00	0.00	
8,200.0	90.00	358.74	6,140.0	2,269.1	98.2	2,268.4	0.00	0.00	0.00	
8,250.0	90.00	358.74	6,140.0	2,319.1	97.1	2,318.4	0.00	0.00	0.00	
8,300.0	90.00	358.74	6,140.0	2,369.1	96.1	2,368.4	0.00	0.00	0.00	
8,350.0	90.00	358.74	6,140.0	2,419.1	95.0	2,418.4	0.00	0.00	0.00	
8,400.0	90.00	358.74	6,140.0	2,469.0	93.9	2,468.4	0.00	0.00	0.00	
8,450.0	90.00	358.74	6,140.0	2,519.0	92.8	2,518.4	0.00	0.00	0.00	
8,500.0	90.00	358.74	6,140.0	2,569.0	91.7	2,568.4	0.00	0.00	0.00	
8,550.0	90.00	358.74	6,140.0	2,619.0	90.6	2,618.4	0.00	0.00	0.00	
8,600.0	90.00	358.74	6,140.0	2,669.0	89.5	2,668.4	0.00	0.00	0.00	
8,650.0	90.00	358.74	6,140.0	2,719.0	88.4	2,718.4	0.00	0.00	0.00	
8,700.0	90.00	358.74	6,140.0	2,769.0	87.3	2,768.3	0.00	0.00	0.00	
8,750.0	90.00	358.74	6,140.0	2,819.0	86.2	2,818.3	0.00	0.00	0.00	
8,800.0	90.00	358.74	6,140.0	2,868.9	85.1	2,868.3	0.00	0.00	0.00	
8,850.0	90.00	358.74	6,140.0	2,918.9	84.0	2,918.3	0.00	0.00	0.00	
8,900.0	90.00	358.74	6,140.0	2,968.9	82.9	2,968.3	0.00	0.00	0.00	
8,950.0	90.00	358.74	6,140.0	3,018.9	81.8	3,018.3	0.00	0.00	0.00	
9,000.0	90.00	358.74	6,140.0	3,068.9	80.7	3,068.3	0.00	0.00	0.00	
9,050.0	90.00	358.74	6,140.0	3,118.9	79.6	3,118.3	0.00	0.00	0.00	

Noble Energy Inc

Planning Report

Database:	EDM Production	Local Co-ordinate Reference:	Well Trisha LC29-74HNB
Company:	Northern Region Drilling - Working	TVD Reference:	WELL @ 4902.0usft (Original Well Elev)
Project:	Wattenberg Field	MD Reference:	WELL @ 4902.0usft (Original Well Elev)
Site:	LC (09N-59W)	North Reference:	Grid
Well:	Trisha LC29-74HNB	Survey Calculation Method:	Minimum Curvature
Wellbore:	Original Drilling		
Design:	APD - Rev 0		

Planned Survey										
Measured Depth (usft)	Inclination (°)	Azimuth (°)	Vertical Depth (usft)	+N/-S (usft)	+E/-W (usft)	Vertical Section (usft)	Dogleg Rate (°/100usft)	Build Rate (°/100usft)	Turn Rate (°/100usft)	
9,100.0	90.00	358.74	6,140.0	3,168.9	78.5	3,168.3	0.00	0.00	0.00	
9,150.0	90.00	358.74	6,140.0	3,218.9	77.4	3,218.3	0.00	0.00	0.00	
9,200.0	90.00	358.74	6,140.0	3,268.9	76.3	3,268.3	0.00	0.00	0.00	
9,250.0	90.00	358.74	6,140.0	3,318.8	75.2	3,318.3	0.00	0.00	0.00	
9,300.0	90.00	358.74	6,140.0	3,368.8	74.1	3,368.3	0.00	0.00	0.00	
9,350.0	90.00	358.74	6,140.0	3,418.8	73.0	3,418.3	0.00	0.00	0.00	
9,400.0	90.00	358.74	6,140.0	3,468.8	71.9	3,468.3	0.00	0.00	0.00	
9,450.0	90.00	358.74	6,140.0	3,518.8	70.8	3,518.3	0.00	0.00	0.00	
9,500.0	90.00	358.74	6,140.0	3,568.8	69.7	3,568.2	0.00	0.00	0.00	
9,550.0	90.00	358.74	6,140.0	3,618.8	68.6	3,618.2	0.00	0.00	0.00	
9,600.0	90.00	358.74	6,140.0	3,668.8	67.5	3,668.2	0.00	0.00	0.00	
9,650.0	90.00	358.74	6,140.0	3,718.7	66.4	3,718.2	0.00	0.00	0.00	
9,700.0	90.00	358.74	6,140.0	3,768.7	65.3	3,768.2	0.00	0.00	0.00	
9,750.0	90.00	358.74	6,140.0	3,818.7	64.2	3,818.2	0.00	0.00	0.00	
9,800.0	90.00	358.74	6,140.0	3,868.7	63.2	3,868.2	0.00	0.00	0.00	
9,850.0	90.00	358.74	6,140.0	3,918.7	62.1	3,918.2	0.00	0.00	0.00	
9,900.0	90.00	358.74	6,140.0	3,968.7	61.0	3,968.2	0.00	0.00	0.00	
9,950.0	90.00	358.74	6,140.0	4,018.7	59.9	4,018.2	0.00	0.00	0.00	
10,000.0	90.00	358.74	6,140.0	4,068.7	58.8	4,068.2	0.00	0.00	0.00	
10,050.0	90.00	358.74	6,140.0	4,118.6	57.7	4,118.2	0.00	0.00	0.00	
10,100.0	90.00	358.74	6,140.0	4,168.6	56.6	4,168.2	0.00	0.00	0.00	
10,150.0	90.00	358.74	6,140.0	4,218.6	55.5	4,218.2	0.00	0.00	0.00	
10,200.0	90.00	358.74	6,140.0	4,268.6	54.4	4,268.2	0.00	0.00	0.00	
10,250.0	90.00	358.74	6,140.0	4,318.6	53.3	4,318.2	0.00	0.00	0.00	
10,300.0	90.00	358.74	6,140.0	4,368.6	52.2	4,368.2	0.00	0.00	0.00	
10,350.0	90.00	358.74	6,140.0	4,418.6	51.1	4,418.1	0.00	0.00	0.00	
10,400.0	90.00	358.74	6,140.0	4,468.6	50.0	4,468.1	0.00	0.00	0.00	
10,450.0	90.00	358.74	6,140.0	4,518.6	48.9	4,518.1	0.00	0.00	0.00	
10,500.0	90.00	358.74	6,140.0	4,568.5	47.8	4,568.1	0.00	0.00	0.00	
10,550.0	90.00	358.74	6,140.0	4,618.5	46.7	4,618.1	0.00	0.00	0.00	
10,600.0	90.00	358.74	6,140.0	4,668.5	45.6	4,668.1	0.00	0.00	0.00	
10,650.0	90.00	358.74	6,140.0	4,718.5	44.5	4,718.1	0.00	0.00	0.00	
10,700.0	90.00	358.74	6,140.0	4,768.5	43.4	4,768.1	0.00	0.00	0.00	
10,750.0	90.00	358.74	6,140.0	4,818.5	42.3	4,818.1	0.00	0.00	0.00	
10,800.0	90.00	358.74	6,140.0	4,868.5	41.2	4,868.1	0.00	0.00	0.00	
10,850.0	90.00	358.74	6,140.0	4,918.5	40.1	4,918.1	0.00	0.00	0.00	
10,900.0	90.00	358.74	6,140.0	4,968.4	39.0	4,968.1	0.00	0.00	0.00	
10,950.0	90.00	358.74	6,140.0	5,018.4	37.9	5,018.1	0.00	0.00	0.00	
11,000.0	90.00	358.74	6,140.0	5,068.4	36.8	5,068.1	0.00	0.00	0.00	
11,050.0	90.00	358.74	6,140.0	5,118.4	35.7	5,118.1	0.00	0.00	0.00	
11,100.0	90.00	358.74	6,140.0	5,168.4	34.6	5,168.1	0.00	0.00	0.00	
11,150.0	90.00	358.74	6,140.0	5,218.4	33.5	5,218.1	0.00	0.00	0.00	
11,200.0	90.00	358.74	6,140.0	5,268.4	32.4	5,268.0	0.00	0.00	0.00	
11,250.0	90.00	358.74	6,140.0	5,318.4	31.3	5,318.0	0.00	0.00	0.00	
11,300.0	90.00	358.74	6,140.0	5,368.3	30.3	5,368.0	0.00	0.00	0.00	
11,350.0	90.00	358.74	6,140.0	5,418.3	29.2	5,418.0	0.00	0.00	0.00	
11,400.0	90.00	358.74	6,140.0	5,468.3	28.1	5,468.0	0.00	0.00	0.00	
11,450.0	90.00	358.74	6,140.0	5,518.3	27.0	5,518.0	0.00	0.00	0.00	
11,500.0	90.00	358.74	6,140.0	5,568.3	25.9	5,568.0	0.00	0.00	0.00	
11,550.0	90.00	358.74	6,140.0	5,618.3	24.8	5,618.0	0.00	0.00	0.00	
11,600.0	90.00	358.74	6,140.0	5,668.3	23.7	5,668.0	0.00	0.00	0.00	
11,650.0	90.00	358.74	6,140.0	5,718.3	22.6	5,718.0	0.00	0.00	0.00	
11,700.0	90.00	358.74	6,140.0	5,768.3	21.5	5,768.0	0.00	0.00	0.00	
11,750.0	90.00	358.74	6,140.0	5,818.2	20.4	5,818.0	0.00	0.00	0.00	

Noble Energy Inc

Planning Report

Database:	EDM Production	Local Co-ordinate Reference:	Well Trisha LC29-74HNB
Company:	Northern Region Drilling - Working	TVD Reference:	WELL @ 4902.0usft (Original Well Elev)
Project:	Wattenberg Field	MD Reference:	WELL @ 4902.0usft (Original Well Elev)
Site:	LC (09N-59W)	North Reference:	Grid
Well:	Trisha LC29-74HNB	Survey Calculation Method:	Minimum Curvature
Wellbore:	Original Drilling		
Design:	APD - Rev 0		

Planned Survey										
Measured Depth (usft)	Inclination (°)	Azimuth (°)	Vertical Depth (usft)	+N/-S (usft)	+E/-W (usft)	Vertical Section (usft)	Dogleg Rate (°/100usft)	Build Rate (°/100usft)	Turn Rate (°/100usft)	
11,800.0	90.00	358.74	6,140.0	5,868.2	19.3	5,868.0	0.00	0.00	0.00	
11,850.0	90.00	358.74	6,140.0	5,918.2	18.2	5,918.0	0.00	0.00	0.00	
11,900.0	90.00	358.74	6,140.0	5,968.2	17.1	5,968.0	0.00	0.00	0.00	
11,950.0	90.00	358.74	6,140.0	6,018.2	16.0	6,018.0	0.00	0.00	0.00	
12,000.0	90.00	358.74	6,140.0	6,068.2	14.9	6,068.0	0.00	0.00	0.00	
12,050.0	90.00	358.74	6,140.0	6,118.2	13.8	6,117.9	0.00	0.00	0.00	
12,100.0	90.00	358.74	6,140.0	6,168.2	12.7	6,167.9	0.00	0.00	0.00	
12,150.0	90.00	358.74	6,140.0	6,218.1	11.6	6,217.9	0.00	0.00	0.00	
12,200.0	90.00	358.74	6,140.0	6,268.1	10.5	6,267.9	0.00	0.00	0.00	
12,250.0	90.00	358.74	6,140.0	6,318.1	9.4	6,317.9	0.00	0.00	0.00	
12,300.0	90.00	358.74	6,140.0	6,368.1	8.3	6,367.9	0.00	0.00	0.00	
12,350.0	90.00	358.74	6,140.0	6,418.1	7.2	6,417.9	0.00	0.00	0.00	
12,400.0	90.00	358.74	6,140.0	6,468.1	6.1	6,467.9	0.00	0.00	0.00	
12,450.0	90.00	358.74	6,140.0	6,518.1	5.0	6,517.9	0.00	0.00	0.00	
12,500.0	90.00	358.74	6,140.0	6,568.1	3.9	6,567.9	0.00	0.00	0.00	
12,550.0	90.00	358.74	6,140.0	6,618.0	2.8	6,617.9	0.00	0.00	0.00	
12,600.0	90.00	358.74	6,140.0	6,668.0	1.7	6,667.9	0.00	0.00	0.00	
12,650.0	90.00	358.74	6,140.0	6,718.0	0.6	6,717.9	0.00	0.00	0.00	
12,700.0	90.00	358.74	6,140.0	6,768.0	-0.5	6,767.9	0.00	0.00	0.00	
12,750.0	90.00	358.74	6,140.0	6,818.0	-1.6	6,817.9	0.00	0.00	0.00	
12,800.0	90.00	358.74	6,140.0	6,868.0	-2.6	6,867.9	0.00	0.00	0.00	
12,850.0	90.00	358.74	6,140.0	6,918.0	-3.7	6,917.9	0.00	0.00	0.00	
12,900.0	90.00	358.74	6,140.0	6,968.0	-4.8	6,967.8	0.00	0.00	0.00	
12,950.0	90.00	358.74	6,140.0	7,018.0	-5.9	7,017.8	0.00	0.00	0.00	
13,000.0	90.00	358.74	6,140.0	7,067.9	-7.0	7,067.8	0.00	0.00	0.00	
13,050.0	90.00	358.74	6,140.0	7,117.9	-8.1	7,117.8	0.00	0.00	0.00	
13,100.0	90.00	358.74	6,140.0	7,167.9	-9.2	7,167.8	0.00	0.00	0.00	
13,150.0	90.00	358.74	6,140.0	7,217.9	-10.3	7,217.8	0.00	0.00	0.00	
13,200.0	90.00	358.74	6,140.0	7,267.9	-11.4	7,267.8	0.00	0.00	0.00	
13,250.0	90.00	358.74	6,140.0	7,317.9	-12.5	7,317.8	0.00	0.00	0.00	
13,300.0	90.00	358.74	6,140.0	7,367.9	-13.6	7,367.8	0.00	0.00	0.00	
13,350.0	90.00	358.74	6,140.0	7,417.9	-14.7	7,417.8	0.00	0.00	0.00	
13,400.0	90.00	358.74	6,140.0	7,467.8	-15.8	7,467.8	0.00	0.00	0.00	
13,450.0	90.00	358.74	6,140.0	7,517.8	-16.9	7,517.8	0.00	0.00	0.00	
13,500.0	90.00	358.74	6,140.0	7,567.8	-18.0	7,567.8	0.00	0.00	0.00	
13,550.0	90.00	358.74	6,140.0	7,617.8	-19.1	7,617.8	0.00	0.00	0.00	
13,600.0	90.00	358.74	6,140.0	7,667.8	-20.2	7,667.8	0.00	0.00	0.00	
13,650.0	90.00	358.74	6,140.0	7,717.8	-21.3	7,717.8	0.00	0.00	0.00	
13,700.0	90.00	358.74	6,140.0	7,767.8	-22.4	7,767.8	0.00	0.00	0.00	
13,750.0	90.00	358.74	6,140.0	7,817.8	-23.5	7,817.7	0.00	0.00	0.00	
13,800.0	90.00	358.74	6,140.0	7,867.7	-24.6	7,867.7	0.00	0.00	0.00	
13,850.0	90.00	358.74	6,140.0	7,917.7	-25.7	7,917.7	0.00	0.00	0.00	
13,900.0	90.00	358.74	6,140.0	7,967.7	-26.8	7,967.7	0.00	0.00	0.00	
13,950.0	90.00	358.74	6,140.0	8,017.7	-27.9	8,017.7	0.00	0.00	0.00	
14,000.0	90.00	358.74	6,140.0	8,067.7	-29.0	8,067.7	0.00	0.00	0.00	
14,050.0	90.00	358.74	6,140.0	8,117.7	-30.1	8,117.7	0.00	0.00	0.00	
14,100.0	90.00	358.74	6,140.0	8,167.7	-31.2	8,167.7	0.00	0.00	0.00	
14,150.0	90.00	358.74	6,140.0	8,217.7	-32.3	8,217.7	0.00	0.00	0.00	
14,200.0	90.00	358.74	6,140.0	8,267.7	-33.4	8,267.7	0.00	0.00	0.00	
14,250.0	90.00	358.74	6,140.0	8,317.6	-34.5	8,317.7	0.00	0.00	0.00	
14,300.0	90.00	358.74	6,140.0	8,367.6	-35.5	8,367.7	0.00	0.00	0.00	
14,350.0	90.00	358.74	6,140.0	8,417.6	-36.6	8,417.7	0.00	0.00	0.00	
14,400.0	90.00	358.74	6,140.0	8,467.6	-37.7	8,467.7	0.00	0.00	0.00	
14,450.0	90.00	358.74	6,140.0	8,517.6	-38.8	8,517.7	0.00	0.00	0.00	

Noble Energy Inc

Planning Report

Database:	EDM Production	Local Co-ordinate Reference:	Well Trisha LC29-74HNB
Company:	Northern Region Drilling - Working	TVD Reference:	WELL @ 4902.0usft (Original Well Elev)
Project:	Wattenberg Field	MD Reference:	WELL @ 4902.0usft (Original Well Elev)
Site:	LC (09N-59W)	North Reference:	Grid
Well:	Trisha LC29-74HNB	Survey Calculation Method:	Minimum Curvature
Wellbore:	Original Drilling		
Design:	APD - Rev 0		

Planned Survey										
Measured Depth (usft)	Inclination (°)	Azimuth (°)	Vertical Depth (usft)	+N/-S (usft)	+E/-W (usft)	Vertical Section (usft)	Dogleg Rate (°/100usft)	Build Rate (°/100usft)	Turn Rate (°/100usft)	
14,500.0	90.00	358.74	6,140.0	8,567.6	-39.9	8,567.7	0.00	0.00	0.00	
14,550.0	90.00	358.74	6,140.0	8,617.6	-41.0	8,617.7	0.00	0.00	0.00	
14,600.0	90.00	358.74	6,140.0	8,667.6	-42.1	8,667.6	0.00	0.00	0.00	
14,650.0	90.00	358.74	6,140.0	8,717.5	-43.2	8,717.6	0.00	0.00	0.00	
14,700.0	90.00	358.74	6,140.0	8,767.5	-44.3	8,767.6	0.00	0.00	0.00	
14,750.0	90.00	358.74	6,140.0	8,817.5	-45.4	8,817.6	0.00	0.00	0.00	
14,800.0	90.00	358.74	6,140.0	8,867.5	-46.5	8,867.6	0.00	0.00	0.00	
14,850.0	90.00	358.74	6,140.0	8,917.5	-47.6	8,917.6	0.00	0.00	0.00	
14,900.0	90.00	358.74	6,140.0	8,967.5	-48.7	8,967.6	0.00	0.00	0.00	
14,950.0	90.00	358.74	6,140.0	9,017.5	-49.8	9,017.6	0.00	0.00	0.00	
15,000.0	90.00	358.74	6,140.0	9,067.5	-50.9	9,067.6	0.00	0.00	0.00	
15,050.0	90.00	358.74	6,140.0	9,117.4	-52.0	9,117.6	0.00	0.00	0.00	
15,100.0	90.00	358.74	6,140.0	9,167.4	-53.1	9,167.6	0.00	0.00	0.00	
15,150.0	90.00	358.74	6,140.0	9,217.4	-54.2	9,217.6	0.00	0.00	0.00	
15,200.0	90.00	358.74	6,140.0	9,267.4	-55.3	9,267.6	0.00	0.00	0.00	
15,250.0	90.00	358.74	6,140.0	9,317.4	-56.4	9,317.6	0.00	0.00	0.00	
15,300.0	90.00	358.74	6,140.0	9,367.4	-57.5	9,367.6	0.00	0.00	0.00	
15,350.0	90.00	358.74	6,140.0	9,417.4	-58.6	9,417.6	0.00	0.00	0.00	
15,400.0	90.00	358.74	6,140.0	9,467.4	-59.7	9,467.5	0.00	0.00	0.00	
15,450.0	90.00	358.74	6,140.0	9,517.4	-60.8	9,517.5	0.00	0.00	0.00	
15,500.0	90.00	358.74	6,140.0	9,567.3	-61.9	9,567.5	0.00	0.00	0.00	
15,540.4	90.00	358.74	6,140.0	9,607.7	-62.8	9,607.9	0.00	0.00	0.00	
TD at 15540.4 - Trisha LC29-74HNB BHL 675°FNL, 1980°FEL										

Design Targets										
Target Name	Dip Angle (°)	Dip Dir. (°)	TVD (usft)	+N/-S (usft)	+E/-W (usft)	Northing (usft)	Easting (usft)	Latitude	Longitude	
- hit/miss target										
- Shape										
Trisha LC29-74HNB BHL	0.00	0.00	6,140.0	9,607.8	-62.8	1,516,417.14	3,415,719.99	40.741300	-103.999720	
- plan hits target center										
- Point										

Casing Points					
Measured Depth (usft)	Vertical Depth (usft)	Name	Casing Diameter (")	Hole Diameter (")	
6,493.7	6,130.7	7" Casing @ 6493.7' MD	7	8-3/4	

Noble Energy Inc

Planning Report

Database:	EDM Production	Local Co-ordinate Reference:	Well Trisha LC29-74HNB
Company:	Northern Region Drilling - Working	TVD Reference:	WELL @ 4902.0usft (Original Well Elev)
Project:	Wattenberg Field	MD Reference:	WELL @ 4902.0usft (Original Well Elev)
Site:	LC (09N-59W)	North Reference:	Grid
Well:	Trisha LC29-74HNB	Survey Calculation Method:	Minimum Curvature
Wellbore:	Original Drilling		
Design:	APD - Rev 0		

Formations						
Measured Depth (usft)	Vertical Depth (usft)	Name	Lithology	Dip (°)	Dip Direction (°)	
1,303.0	1,303.0	PIERRE		0.00		
3,448.0	3,434.0	PARKMAN		0.00		
4,118.0	4,104.0	SUSSEX		0.00		
4,494.0	4,480.0	SHANNON		0.00		
5,313.0	5,299.0	TEEPEE BUTTES		0.00		
6,085.1	5,984.0	SHARON SPRINGS		0.00		
6,129.4	6,010.0	NIOBRARA		0.00		
6,129.4	6,010.0	NIO A CHALK		0.00		
6,182.2	6,038.0	NIO A MARL		0.00		
6,372.4	6,110.0	NIO B CHALK		0.00		
6,593.4	6,139.0	NIO B MARL		0.00		

Plan Annotations					
Measured Depth (usft)	Vertical Depth (usft)	Local Coordinates			
		+N/-S (usft)	+E/-W (usft)	Comment	
1,800.0	1,800.0	0.0	0.0	KOP - Start Build 2.00	
2,638.5	2,628.9	-57.7	96.2	Start Drop -2.00	
5,431.2	5,417.2	-90.0	150.0	KOP #2 - Start Build 8.00	
6,493.7	6,130.7	563.6	135.7	Start 75.0 hold at 6493.7 MD	
6,568.7	6,137.3	638.3	134.0	Start Build 8.00	
15,540.4	6,140.0	9,607.7	-62.8	TD at 15540.4	

Northern Region Drilling - Working

Wattenberg Field

LC (09N-59W)

Trisha LC29-74HNB

Original Drilling

APD - Rev 0

Anticollision Summary Report

28 August, 2013

Noble Energy Inc
Anticollision Summary Report

Company:	Northern Region Drilling - Working	Local Co-ordinate Reference:	Well Trisha LC29-74HNB
Project:	Wattenberg Field	TVD Reference:	WELL @ 4902.0usft (Original Well Elev)
Reference Site:	LC (09N-59W)	MD Reference:	WELL @ 4902.0usft (Original Well Elev)
Site Error:	0.0 usft	North Reference:	Grid
Reference Well:	Trisha LC29-74HNB	Survey Calculation Method:	Minimum Curvature
Well Error:	0.0 usft	Output errors are at	2.00 sigma
Reference Wellbore	Original Drilling	Database:	EDM Production
Reference Design:	APD - Rev 0	Offset TVD Reference:	Offset Datum

Reference	APD - Rev 0		
Filter type:	NO GLOBAL FILTER: Using user defined selection & filtering criteria		
Interpolation Method:	Stations	Error Model:	ISCWSA
Depth Range:	Unlimited	Scan Method:	Closest Approach 3D
Results Limited by:	Maximum center-center distance of 10,000.0 usft	Error Surface:	Elliptical Conic
Warning Levels Evaluated at:	2.00 Sigma	Casing Method:	Not applied

Survey Tool Program	Date	8/28/2013		
From (usft)	To (usft)	Survey (Wellbore)	Tool Name	Description
0.0	15,540.4	APD - Rev 0 (Original Drilling)	MWD+IFR1+MS_WY	Fixed:v2:Rockies, crustal dec + 3-axis correction

Summary						
Site Name	Reference Measured Depth (usft)	Offset Measured Depth (usft)	Distance Between Centres (usft)	Distance Between Ellipses (usft)	Separation Factor	Warning
Offset Well - Wellbore - Design						
LC (09N-59W)						
Ptasnik LC20-75HN - Original Drilling - As Drilled	11,570.1	10,616.0	514.7	372.9	3.631	SF
Ptasnik LC20-75HN - Original Drilling - As Drilled	13,600.0	8,577.2	479.0	358.3	3.968	ES
Ptasnik LC20-75HN - Original Drilling - As Drilled	13,661.4	8,521.4	478.6	358.4	3.980	CC
Rico LC29-74-1HNA - Original Drilling - APD - Rev 0	1,200.0	1,199.0	188.5	183.4	36.970	CC
Rico LC29-74-1HNA - Original Drilling - APD - Rev 0	15,540.4	15,482.2	345.4	158.5	1.848	Level 3, ES, SF
Tina LC29-75-1HNA - Original Drilling - APD - Rev 0	1,500.0	1,500.0	36.0	29.6	5.587	CC, ES
Tina LC29-75-1HNA - Original Drilling - APD - Rev 0	15,540.4	15,481.8	335.2	58.3	1.211	Level 2, SF
Trisha LC29-75HNB - Original Drilling - APD - Rev 0	1,166.3	1,167.3	74.8	69.9	15.112	CC
Trisha LC29-75HNB - Original Drilling - APD - Rev 0	1,200.0	1,200.0	74.9	69.8	14.671	ES
Trisha LC29-75HNB - Original Drilling - APD - Rev 0	10,300.0	10,267.9	662.1	573.7	7.488	SF

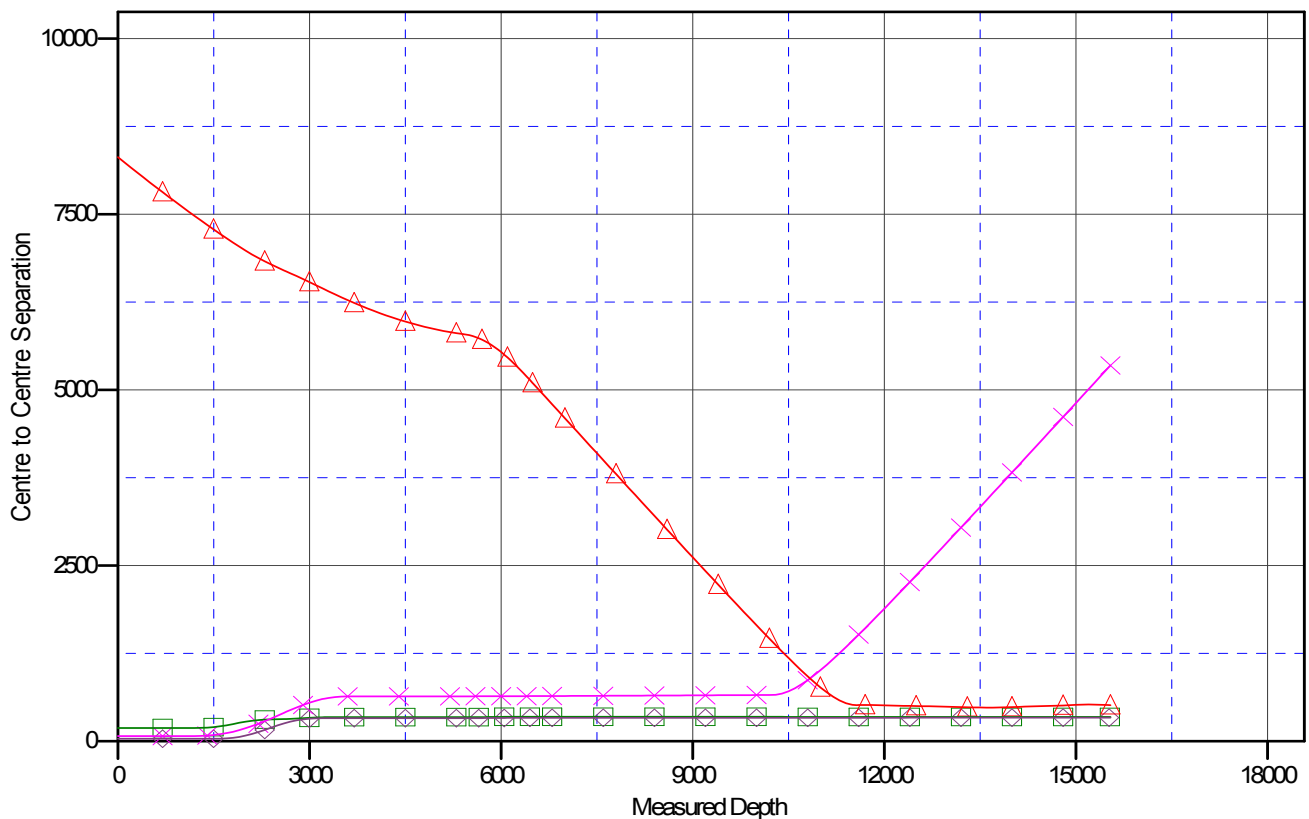
Noble Energy Inc
Anticollision Summary Report

Company:	Northern Region Drilling - Working	Local Co-ordinate Reference:	Well Trisha LC29-74HNB
Project:	Wattenberg Field	TVD Reference:	WELL @ 4902.0usft (Original Well Elev)
Reference Site:	LC (09N-59W)	MD Reference:	WELL @ 4902.0usft (Original Well Elev)
Site Error:	0.0 usft	North Reference:	Grid
Reference Well:	Trisha LC29-74HNB	Survey Calculation Method:	Minimum Curvature
Well Error:	0.0 usft	Output errors are at	2.00 sigma
Reference Wellbore	Original Drilling	Database:	EDM Production
Reference Design:	APD - Rev 0	Offset TVD Reference:	Offset Datum

Reference Depths are relative to WELL @ 4902.0usft (Original Well Ele
Offset Depths are relative to Offset Datum
Central Meridian is -105.500000

Coordinates are relative to: Trisha LC29-74HNB
Coordinate System is US State Plane 1983, Colorado Northern Zone
Grid Convergence at Surface is: 0.97°

Ladder Plot



LEGEND

□ LC29-74-1HNA, Original Drilling, APD - Rev0 V0 x Trisha LC29-75HNB, Original Drilling, APD - Rev0 V0
△ LC29-75-1HNA, Original Drilling, APD - Rev0 V0 △ Ptasnik LC20-75HN, Original Drilling, As Drilled V0

Noble Energy Inc

Anticollision Summary Report

Company:	Northern Region Drilling - Working	Local Co-ordinate Reference:	Well Trisha LC29-74HNB
Project:	Wattenberg Field	TVD Reference:	WELL @ 4902.0usft (Original Well Elev)
Reference Site:	LC (09N-59W)	MD Reference:	WELL @ 4902.0usft (Original Well Elev)
Site Error:	0.0 usft	North Reference:	Grid
Reference Well:	Trisha LC29-74HNB	Survey Calculation Method:	Minimum Curvature
Well Error:	0.0 usft	Output errors are at	2.00 sigma
Reference Wellbore	Original Drilling	Database:	EDM Production
Reference Design:	APD - Rev 0	Offset TVD Reference:	Offset Datum

Reference Depths are relative to WELL @ 4902.0usft (Original Well Ele
Offset Depths are relative to Offset Datum
Central Meridian is -105.500000

Coordinates are relative to: Trisha LC29-74HNB
Coordinate System is US State Plane 1983, Colorado Northern Zone
Grid Convergence at Surface is: 0.97°

