

MULTI-WELL PLAN

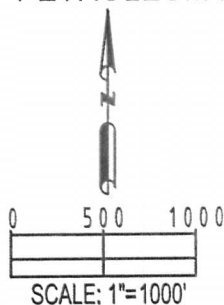
RICO LC29-74-1HNA

THIS MAP DOES NOT REPRESENT A BOUNDARY SURVEY

SECTION: 29
TOWNSHIP: 9N
RANGE: 59W

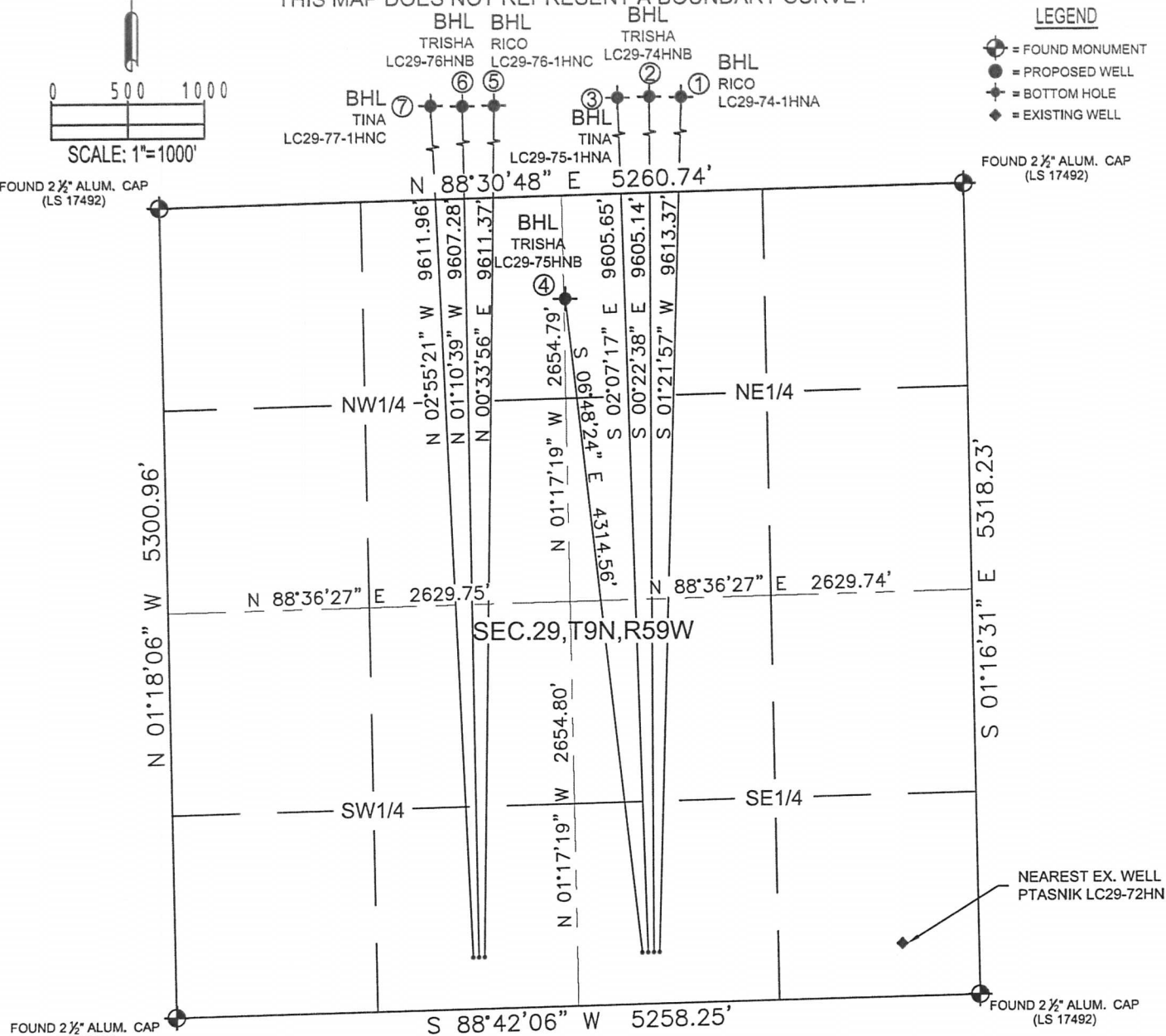
LEGEND

- = FOUND MONUMENT
- = PROPOSED WELL
- = BOTTOM HOLE
- ◆ = EXISTING WELL



FOUND 2 1/2" ALUM. CAP
(LS 17492)

FOUND 2 1/2" ALUM. CAP
(LS 17492)



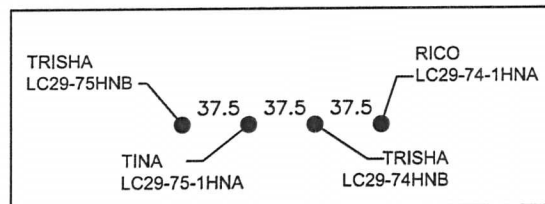
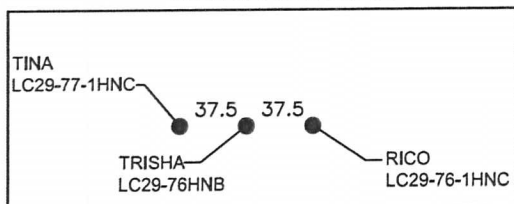
NEAREST EX. WELL
PTASNIK LC29-72HN

FOUND 2 1/2" ALUM. CAP
(LS 17492)

FOUND 2 1/2" ALUM. CAP
(LS 17492)

WELL PAD DETAIL

WELL PAD DETAIL



SHEET 1 OF 3

FIELD
DATE:
07-30-13

DRAWING
DATE:
10-14-13

DRAWN BY:
CLM

CHECKED BY:
TJN

①	②	③	④	⑤	⑥	⑦
BOTTOM HOLE: RICO LC29-74-1HNA 675' FNL 1650' FEL LAT-40.74130°N LONG-103.99853°W	BOTTOM HOLE: TRISHA LC29-74HNB 675' FNL 1980' FEL LAT-40.74130°N LONG-103.99972°W	BOTTOM HOLE: TINA LC29-75-1HNA 675' FNL 2310' FEL LAT-40.74129°N LONG-104.00091°W	BOTTOM HOLE: TRISHA LC29-75HNB 675' FNL SEC. 29 2620' FEL SEC. 29 LAT-40.72671°N LONG-104.00193°W	BOTTOM HOLE: RICO LC29-76-1HNC 675' FNL 2310' FWL LAT-40.74129°N LONG-104.00315°W	BOTTOM HOLE: TRISHA LC29-76HNB 675' FNL 1980' FWL LAT-40.74129°N LONG-104.00434°W	BOTTOM HOLE: TINA LC29-77-1HNC 675' FNL 1650' FWL LAT-40.74128°N LONG-104.00553°W

Petroleum Field Services, LLC

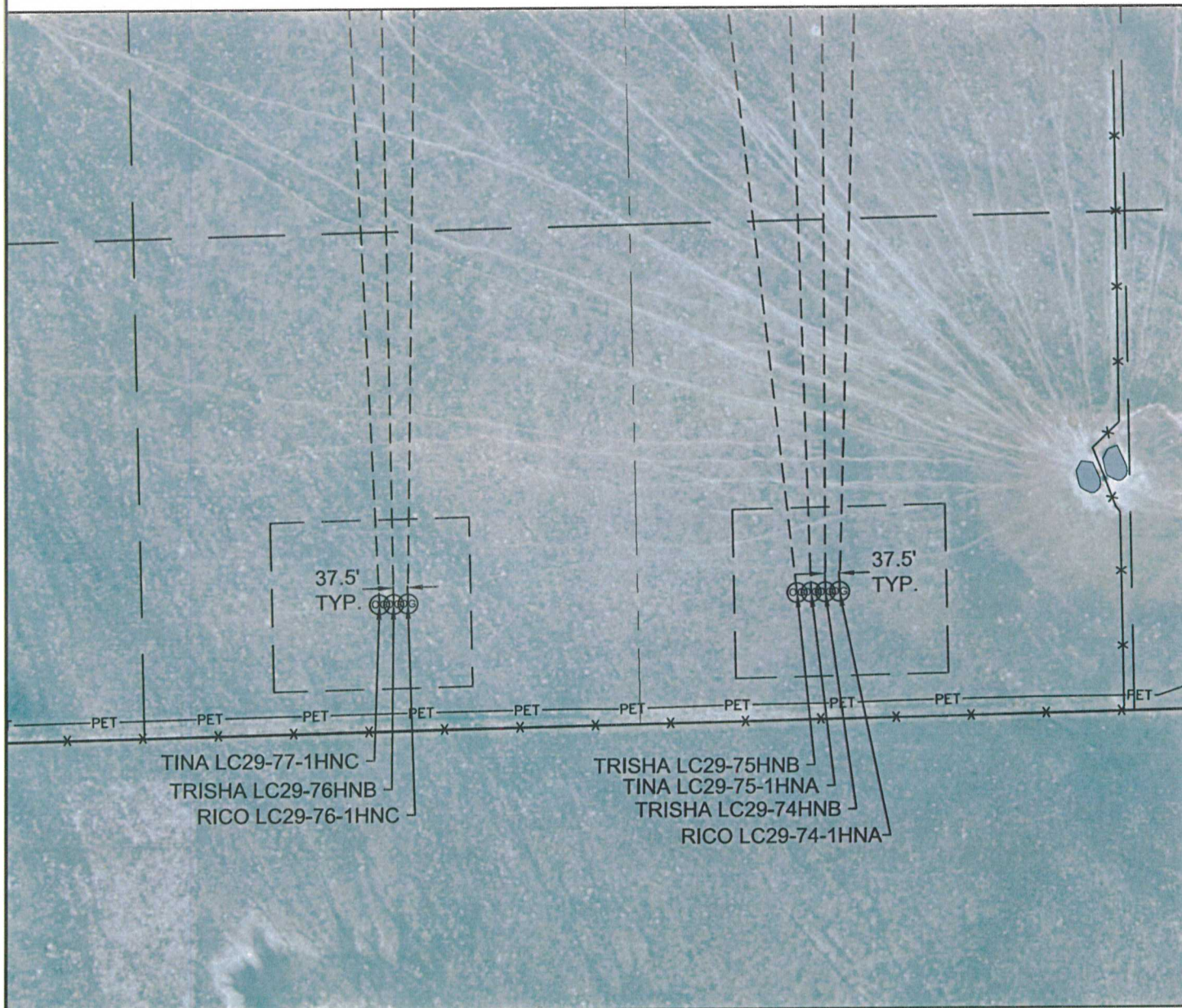
7535 HILLTOP CIRCLE

Denver, CO 80221

MULTI WELL PLAN

RICO LC29-74-1HNA PAD

SECTION: 29
TOWNSHIP: 9N
RANGE: 59W



SHEET 3 OF 3

FIELD
DATE:
10-01-13

DRAWING
DATE:
10-11-13

DRAWN BY:
CLM

CHECKED BY:
TJN

