

*The Road to Excellence Starts with Safety*

Sold To #: 300721	Ship To #: 2993127	Quote #:	Sales Order #: 900486012
Customer: WPX ENERGY ROCKY MOUNTAIN LLC-EBUS	Customer Rep: Towers, Ron		
Well Name: RWF	Well #: 14-29	API/UWI #: 05-045-21666	
Field: Rulison	City (SAP): PARACHUTE	County/Parish: Garfield	State: Colorado
Lat: N 39.49 deg. OR N 39 deg. 29 min. 24.108 secs.	Long: W 107.919 deg. OR W -108 deg. 4 min. 53.069 secs.		
Contractor: Nabors	Rig/Platform Name/Num: Nabors 573		
Job Purpose: Cement Surface Casing			
Well Type: Development Well	Job Type: Cement Surface Casing		
Sales Person: MAYO, MARK	Srv Supervisor: KEANE, JOHN	MBU ID Emp #: 486519	

**Job Personnel**

HES Emp Name	Exp Hrs	Emp #	HES Emp Name	Exp Hrs	Emp #	HES Emp Name	Exp Hrs	Emp #
BANKS, BRENT A	0.0	371353	CHASTAIN, DERICK Allan	0.0	455848	KEANE, JOHN Donovan	0.0	486519

**Equipment**

HES Unit #	Distance-1 way	HES Unit #	Distance-1 way	HES Unit #	Distance-1 way	HES Unit #	Distance-1 way
10567589C	60 mile	10713212	60 mile	11259881	60 mile	11360871	60 mile
11808829	60 mile						

**Job Hours**

Date	On Location Hours	Operating Hours	Date	On Location Hours	Operating Hours	Date	On Location Hours	Operating Hours

**TOTAL** Total is the sum of each column separately

**Job**

**Job Times**

Formation Name				Date	Time	Time Zone
Formation Depth (MD)	Top	Bottom		Called Out	02 - Jun - 2013	21:30 MST
Form Type		BHST		On Location	03 - Jun - 2013	02:00 MST
Job depth MD	1118. ft	Job Depth TVD	1118. ft	Job Started	03 - Jun - 2013	05:31 MST
Water Depth		Wk Ht Above Floor	5. ft	Job Completed	03 - Jun - 2013	06:31 MST
Perforation Depth (MD)	From	To		Departed Loc	03 - Jun - 2013	07:40 MST

**Well Data**

Description	New / Used	Max pressure psig	Size in	ID in	Weight lbm/ft	Thread	Grade	Top MD ft	Bottom MD ft	Top TVD ft	Bottom TVD ft
OPEN HOLE				13.5				.	1130.	.	1130.
9.625 IN SURFACE CASING	Unknown		9.625	9.001	32.3		H-40	.	1118.	.	1118.

**Tools and Accessories**

Type	Size	Qty	Make	Depth	Type	Size	Qty	Make	Depth	Type	Size	Qty	Make
Guide Shoe					Packer					Top Plug			
Float Shoe					Bridge Plug					Bottom Plug			
Float Collar					Retainer					SSR plug set			
Insert Float										Plug Container			
Stage Tool										Centralizers			

**Miscellaneous Materials**

Gelling Agt	Conc	Surfactant	Conc	Acid Type	Qty	Conc	%
Treatment Fld	Conc	Inhibitor	Conc	Sand Type	Size	Qty	

**Fluid Data**

**Stage/Plug #: 1**

Fluid #	Stage Type	Fluid Name	Qty	Qty uom	Mixing Density lbm/gal	Yield ft3/sk	Mix Fluid Gal/sk	Rate bbl/min	Total Mix Fluid Gal/sk
---------	------------	------------	-----	---------	------------------------	--------------	------------------	--------------	------------------------

**Stage/Plug #: 1**

Stage/Plug #: 1									
Fluid #	Stage Type	Fluid Name	Qty	Qty uom	Mixing Density lbm/gal	Yield ft <sup>3</sup> /sk	Mix Fluid Gal/sk	Rate bbl/min	Total Mix Fluid Gal/sk
1	Fresh Water Spacer		20.00	bbl	.	.0	.0	.0	
2	VersaCem Lead Cement	VERSACEM (TM) SYSTEM (452010)	160.0	sacks	12.3	2.38	13.75		13.75
3	VersaCem Tail Cement	VERSACEM (TM) SYSTEM (452010)	160.0	sacks	12.8	2.11	11.75		11.75
4	Fresh Water Displacement		85.00	bbl	.	.0	.0	.0	
Calculated Values		Pressures		Volumes					
Displacement		Shut In: Instant		Lost Returns		Cement Slurry		Pad	
Top Of Cement		5 Min		Cement Returns		Actual Displacement		Treatment	
Frac Gradient		15 Min		Spacers		Load and Breakdown		Total Job	
Rates									
Circulating		Mixing		Displacement		Avg. Job			
Cement Left In Pipe		Amount	43 ft	Reason	Shoe Joint				
Frac Ring # 1 @	ID	Frac ring # 2 @	ID	Frac Ring # 3 @	ID	Frac Ring # 4 @	ID		
The Information Stated Herein Is Correct				Customer Representative Signature					



*The Road to Excellence Starts with Safety*

The Road to Excellence Starts With Safety			
Sold To #: 300721	Ship To #: 2993127	Quote #:	Sales Order #: 900486012
Customer: WPX ENERGY ROCKY MOUNTAIN LLC-EBUS		Customer Rep: Towers, Ron	
Well Name: RWF		Well #: 14-29	API/UWI #: 05-045-21666
Field: Rulison	City (SAP): PARACHUTE	County/Parish: Garfield	State: Colorado
Legal Description:			
Lat: N 39.49 deg. OR N 39 deg. 29 min. 24.108 secs.		Long: W 107.919 deg. OR W -108 deg. 4 min. 53.069 secs.	
Contractor: Nabors		Rig/Platform Name/Num: Nabors 573	
Job Purpose: Cement Surface Casing			Ticket Amount:
Well Type: Development Well		Job Type: Cement Surface Casing	
Sales Person: MAYO, MARK		Srv Supervisor: KEANE, JOHN	MBU ID Emp #: 486519

Activity Description	Date/Time	Cht #	Rate bbl/ min	Volume bbl		Pressure psig		Comments
				Stage	Total	Tubing	Casing	
Pre-Convoy Safety Meeting	06/02/2013 11:31							WITH HES
Call Out	06/02/2013 21:30							
Arrive At Loc	06/03/2013 02:00							RIG PULLING DRILL PIPE UPON HES ARRIVAL
Assessment Of Location Safety Meeting	06/03/2013 02:15							WITH HES
Pre-Rig Up Safety Meeting	06/03/2013 04:30							WITH HES
Rig-Up Equipment	06/03/2013 04:45							
Pre-Job Safety Meeting	06/03/2013 05:15							WITH HES, NABORS 573, AND WPX
Start Job	06/03/2013 05:31							TP 1118 FT, TD 1130 FT, SHOE 43 FT, HOLE 13.5 IN, MWT 9.6 LB/GAL, 9.625 IN 32.3 H-40
Pump Water	06/03/2013 05:32		2	2			41.0	FILL LINES
Test Lines	06/03/2013 05:33							LOW TEST AT 2070 PSI, HIGH TEST AT 2900 PSI, PRESSURE HOLDING
Pump Spacer	06/03/2013 05:40		4	20			78.0	FRESH WATER SPACER
Pump Lead Cement	06/03/2013 05:50		8	67.8			245.0	MIXED AT 12.3 LB/GAL, 160 SKS, 2.38 FT3/SK, 13.75 GAL/SK
Pump Tail Cement	06/03/2013 06:01		8	60.1			210.0	MIXED AT 12.8 LB/GAL, 160 SKS, 2.11 FT3/SK, 11.75 GAL/SK
Shutdown	06/03/2013 06:09						80.0	

Sold To #: 300721

Ship To #: 2993127

Quote #:

Sales Order #: 900486012

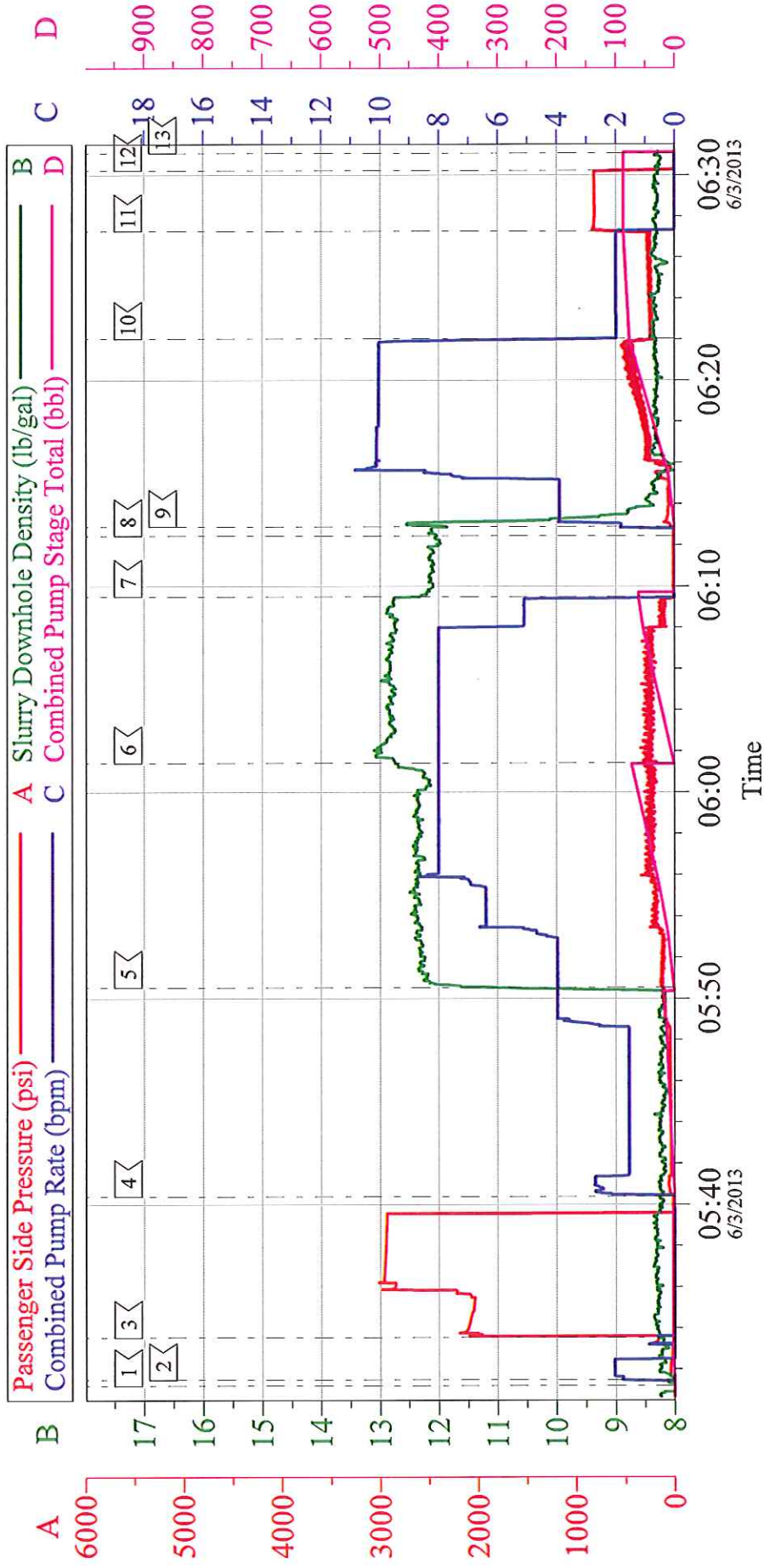
SUMMIT Version: 7.3.0081

Friday, June 07, 2013 11:18:00

## Cementing Job Log

Activity Description	Date/Time	Cht #	Rate bbl/min	Volume bbl		Pressure psig		Comments
				Stage	Total	Tubing	Casing	
Drop Plug	06/03/2013 06:12							PLUG LAUNCHED
Pump Displacement	06/03/2013 06:13		10	75			460.0	FRESH WATER
Slow Rate	06/03/2013 06:22		2	10			280.0	SLOWED AT 75 BBL AWAY
Bump Plug	06/03/2013 06:27						285.0	PLUG BUMPED AT CALCULATED DISPLACEMENT
Check Floats	06/03/2013 06:30						810.0	FLOATS HOLDING
End Job	06/03/2013 06:31							GOOD CIRCULATION THROUGHOUT THE JOB, PIPE WAS STATIC THROUGHOUT JOB
Post-Job Safety Meeting (Pre Rig-Down)	06/03/2013 06:35							WITH HES
Rig-Down Equipment	06/03/2013 06:45							
Pre-Convoy Safety Meeting	06/03/2013 07:30							WITH HES
Crew Leave Location	06/03/2013 07:40							
Comment	06/03/2013 07:41							THANKS FOR CHOOSING HALLIBURTON, JOHN KEANE AND CREW

# WPX - RWF-14-29 9.625 IN. SURFACE

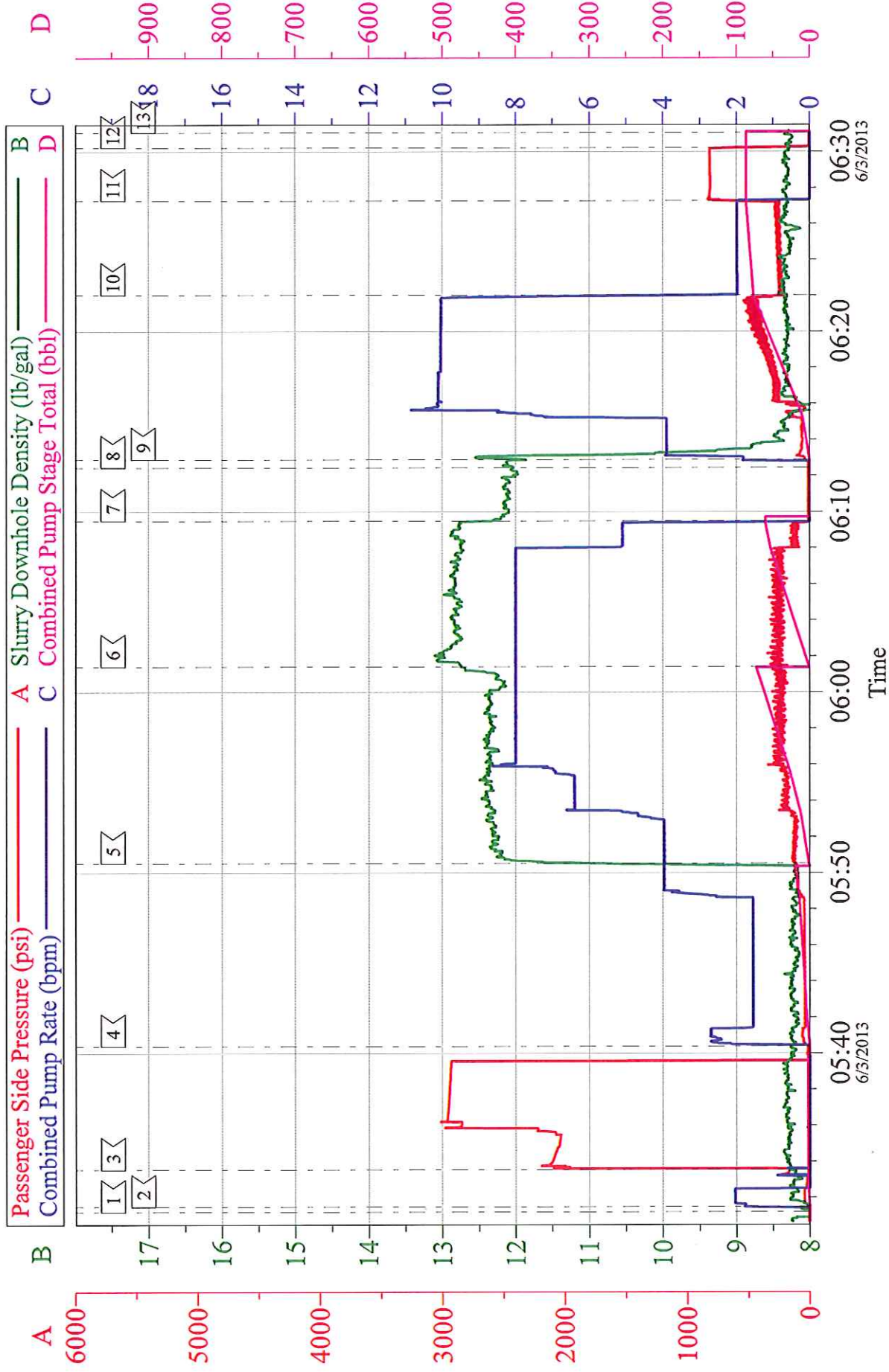


Customer: WPX	Job Date: 03-Jun-2013	Sales Order #: 900486012
Well Description: RWF-14-29	Job Type: SURFACE	ADC Used: YES
Company Rep: HARRY SAMSON	Cement Supervisor: JOHN KEANE	Elite #3: DERICK CHASTAIN



# WPX - RWF-14-29

9.625 IN. SURFACE



Customer: WPX	Job Date: 03-Jun-2013	Sales Order #: 900486012
Well Description: RWF-14-29	Job Type: SURFACE	ADC Used: YES
Company Rep: HARRY SAMSON	Cement Supervisor: JOHN KEANE	Elite #3: DERICK CHASTAIN