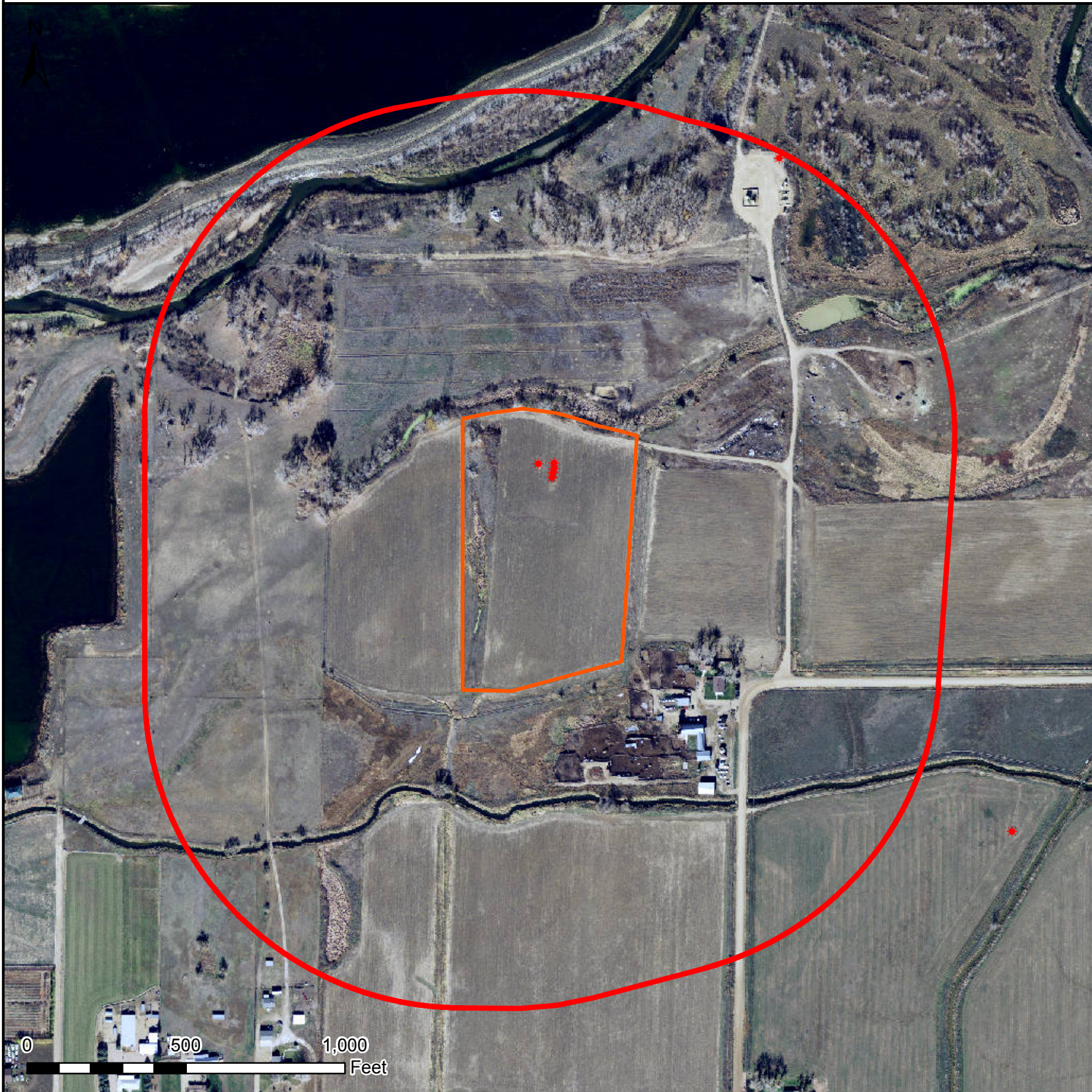


HYDROLOGY MAP

VOGEL STATE 39N-36HZ



Legend

- Well pad (proposed)
- 1000' buffer
- Existing oil/gas well (COGCC)

Nearest Surface Water Feature

Wetlands: 235' NE
Wetlands elevation: 4810'
Well elevation: 4818'

All measurements are made from
the reference well.



Date created: 10/11/2013
Created by: APC Regulatory GIS
Scale: 1:5,000
Projection: NAD83 UTM 13N