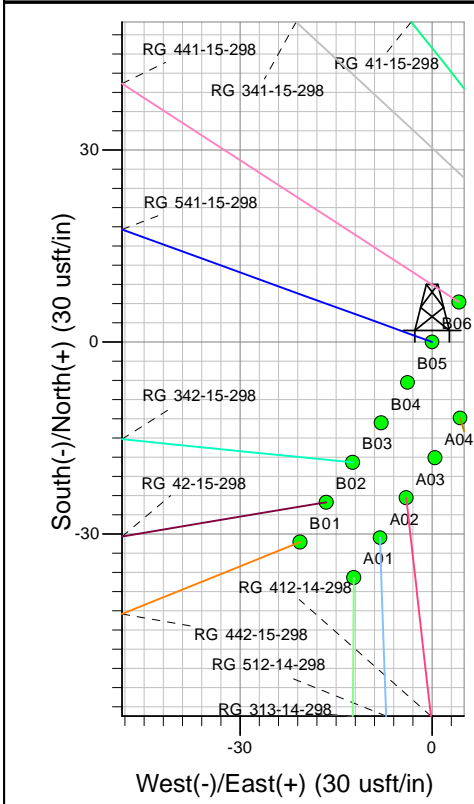
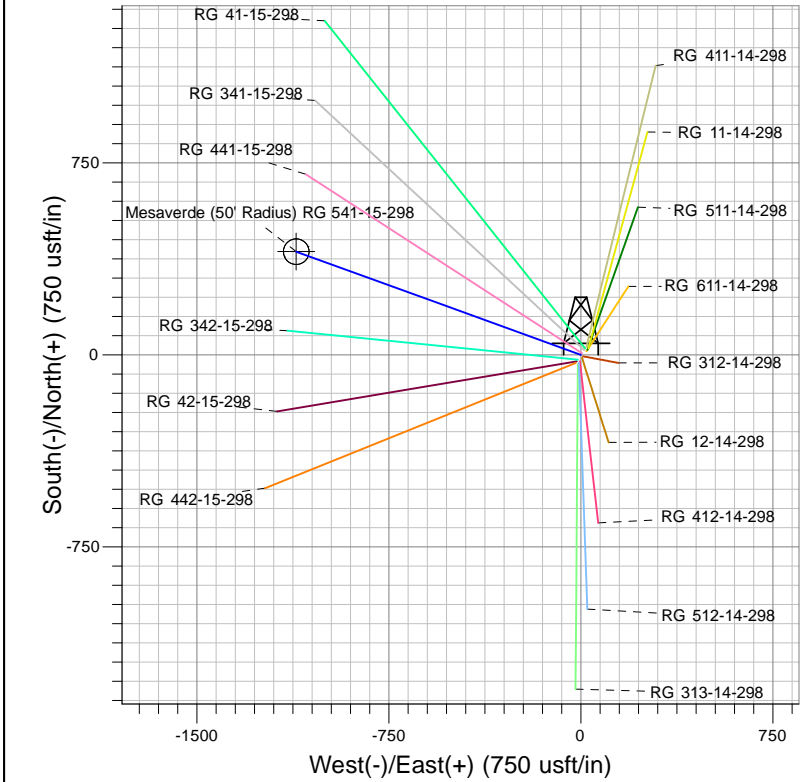
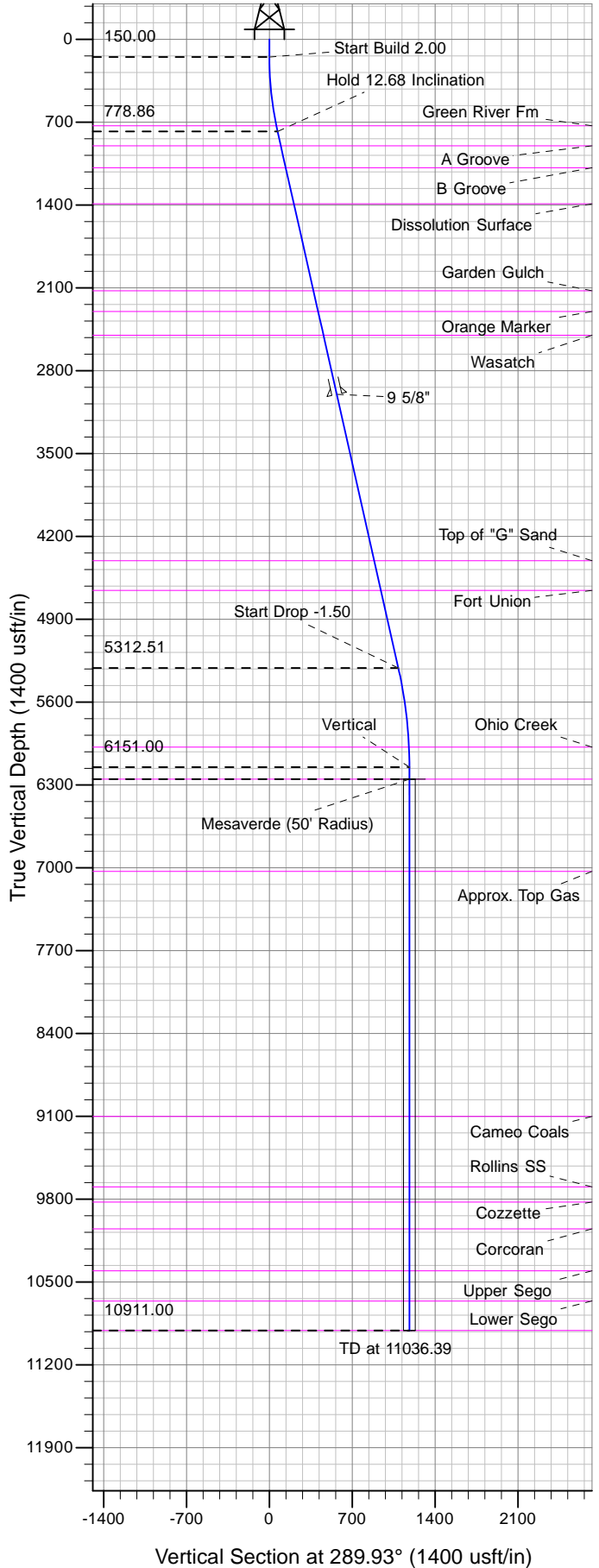




Well Name: RG 541-15-298
Surface Location: RG 12-14-298 Pad
North American Datum 1983 , US State Plane 1983 , Colorado Central Zone
Ground Elevation: 6560.00
+N/-S +E/-W Northing Easting Latitude Longitude Slot
0.00 0.00 1758331.31 2195518.89 39.88058 -108.36688 B06
KELLY BUSHING @ 6581.00usft (Cyclone 29 (21' RKB) kjs)



Project: RG 14-02S-098W
Site: RG 12-14-298 Pad
Well: RG 541-15-298
Plan 4 03Sep13 kjs

Azimuths to True North
Magnetic North: 10.73°
Magnetic Field
Strength: 52529.6snT
Dip Angle: 66.02°
Date: 3/22/2010
Model: IGRF2010

ANNOTATIONS									
TVD	MD	Inc	Azi	+N/-S	+E/-W	V Sect	Departure	Annotation	
150.00	150.00	0.00	0.00	0.00	0.00	0.00	0.00	Start Build 2.00	
778.86	784.03	12.68	289.93	23.82	-65.69	69.87	69.87	Hold 12.68 Inclination	
5312.51	5431.02	12.68	289.93	371.54	-1024.68	1089.96	1089.96	Start Drop -1.50	
6151.00	6276.39	0.00	0.00	403.30	-1112.27	1183.13	1183.13	Vertical	
6251.00	6376.39	0.00	0.00	403.30	-1112.27	1183.13	1183.13	Mesaverde	
10911.00	11036.39	0.00	0.00	403.30	-1112.27	1183.13	1183.13	TD at 11036.39	