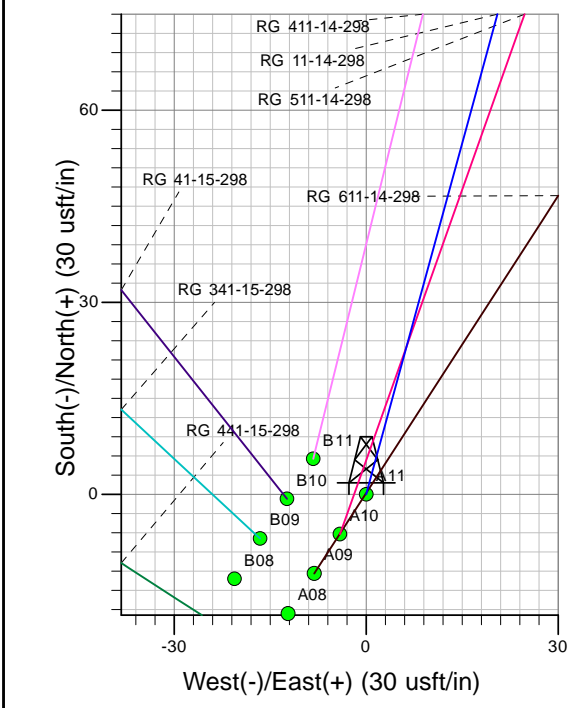
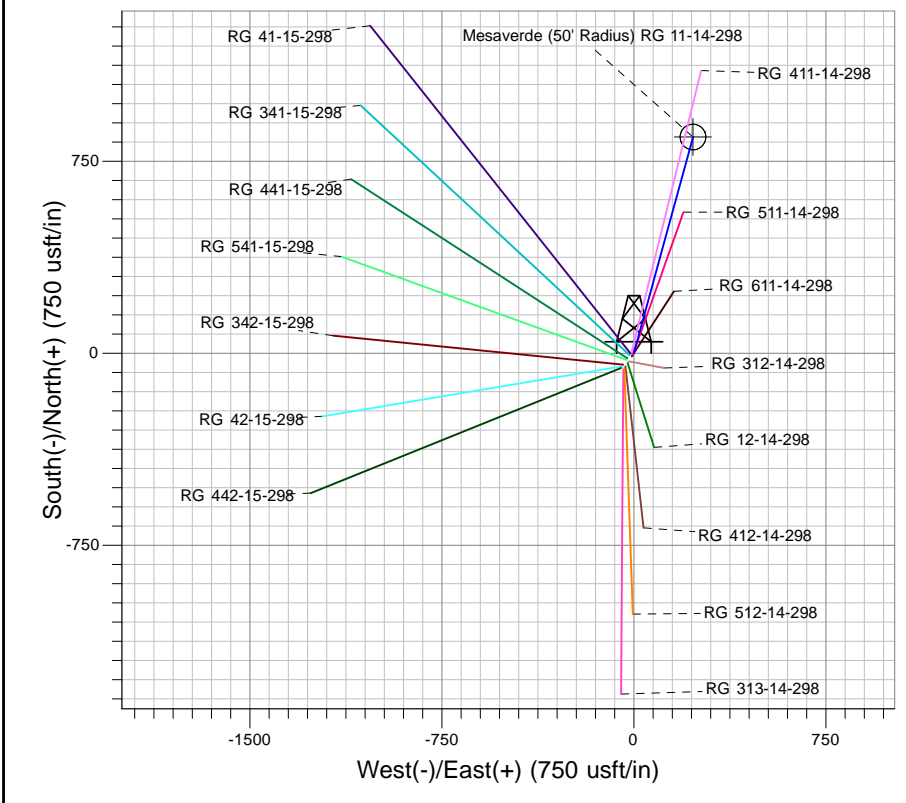
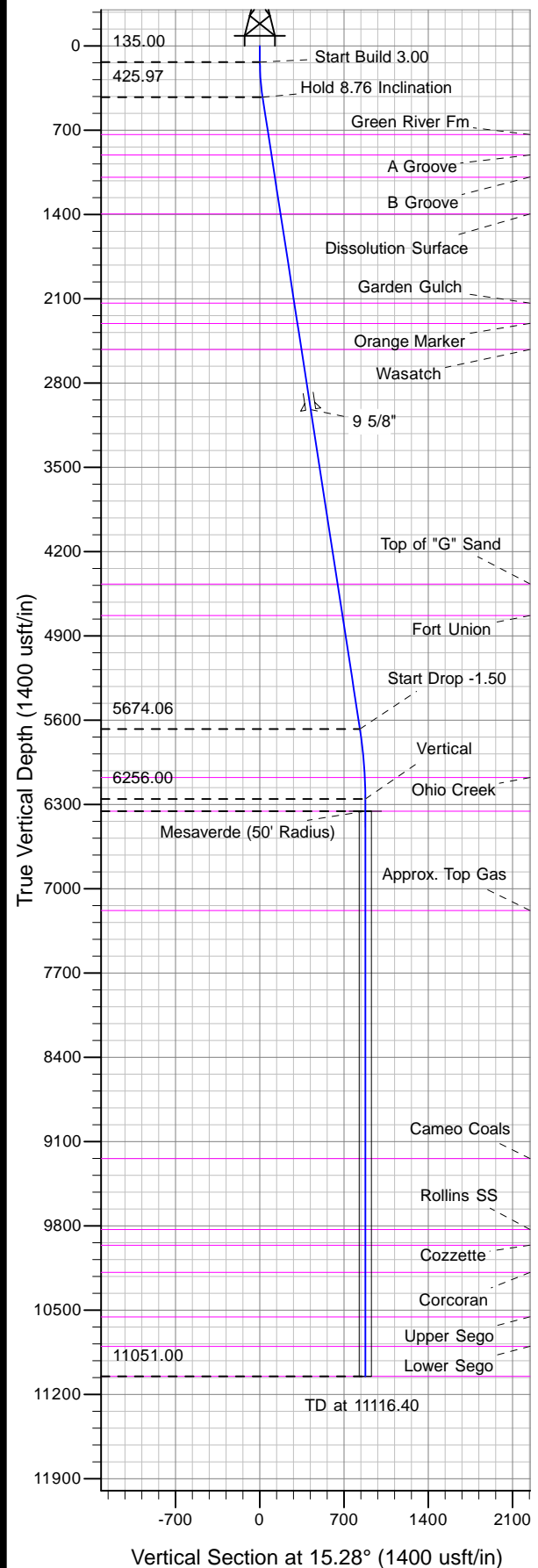




Well Name: RG 11-14-298  
Surface Location: RG 12-14-298 Pad  
North American Datum 1983 , US State Plane 1983 , Colorado Central Zone  
Ground Elevation: 6560.00

+N/-S	+E/-W	Northing	Easting	Latitude	Longitude	Slot
0.00	0.00	1758356.11	2195548.69	39.88065	-108.36678	A11

KELLY BUSHING @ 6581.00usft (Cyclone 29 (21' RKB) kjs)



Project: RG 14-02S-098W  
Site: RG 12-14-298 Pad  
Well: RG 11-14-298  
Plan 4 03Sep13 kjs

Azimuths to True North  
Magnetic North: 11.04°  
Magnetic Field  
Strength: 52808.5snT  
Dip Angle: 66.10°  
Date: 8/27/2007  
Model: IGRF2005-10

ANNOTATIONS									
TVD	MD	Inc	Azi	+N/-S	+E/-W	Vsect	Departure	Annotation	
135.00	135.00	0.00	0.00	0.00	0.00	0.00	0.00	Start Build 3.00	
425.97	427.11	8.76	15.28	21.51	5.88	22.30	22.30	Hold 8.76 Inclination	
5674.06	5737.18	8.76	15.28	801.91	219.07	831.29	831.29	Start Drop -1.50	
6256.00	6321.40	0.00	0.00	844.92	230.82	875.88	875.88	Vertical	
6356.00	6421.40	0.00	0.00	844.92	230.82	875.88	875.88	Mesaverde	
11051.00	11116.40	0.00	0.00	844.92	230.82	875.88	875.88	TD at 11116.40	