

The Road to Excellence Starts with Safety

Sold To #: 300721	Ship To #: 3000043	Quote #:	Sales Order #: 900462004
Customer: WPX ENERGY ROCKY MOUNTAIN LLC-EBUS	Customer Rep: Hartl, Al		
Well Name: RWF	Well #: 433-36	API/UWI #:	
Field: RULISON	City (SAP): RIFLE	County/Parish: Garfield	State: Colorado
Contractor: Nabors	Rig/Platform Name/Num: Nabors 576		
Job Purpose: Cement Surface Casing			
Well Type: Development Well	Job Type: Cement Surface Casing		
Sales Person: MAYO, MARK	Srv Supervisor: MUHLESTEIN, RYAN	MBU ID Emp #: 453609	

Job Personnel

HES Emp Name	Exp Hrs	Emp #	HES Emp Name	Exp Hrs	Emp #	HES Emp Name	Exp Hrs	Emp #
ANDERSON, ADAM S	3	456683	LAULAINEN, ROGER Edward	3	524413	MUHLESTEIN, RYAN Herrick	3	453609

Equipment

HES Unit #	Distance-1 way	HES Unit #	Distance-1 way	HES Unit #	Distance-1 way	HES Unit #	Distance-1 way
10867322	60 mile	10872429	60 mile	10951250	60 mile	10978335	60 mile
11808833	60 mile						

Job Hours

Date	On Location Hours	Operating Hours	Date	On Location Hours	Operating Hours	Date	On Location Hours	Operating Hours
5/24/2013	3	3						

TOTAL Total is the sum of each column separately

Job				Job Times			
Formation Name				Date	Time	Time Zone	
Formation Depth (MD)	Top		Bottom	Called Out	24 - May - 2013	05:30	MST
Form Type		BHST		On Location	24 - May - 2013	09:00	MST
Job depth MD	1140. ft	Job Depth TVD	1140. ft	Job Started	24 - May - 2013	10:09	MST
Water Depth		Wk Ht Above Floor	4. ft	Job Completed	24 - May - 2013	11:01	MST
Perforation Depth (MD)	From		To	Departed Loc	24 - May - 2013	12:00	MST

Well Data

Description	New / Used	Max pressure psig	Size in	ID in	Weight lbm/ft	Thread	Grade	Top MD ft	Bottom MD ft	Top TVD ft	Bottom TVD ft
OPEN HOLE SECTION				13.5				.	1140.		
SURFACE CASING	Unknown		9.625	9.001	32.3		H-40	.	1125.6		

Tools and Accessories

Type	Size	Qty	Make	Depth	Type	Size	Qty	Make	Depth	Type	Size	Qty	Make
Guide Shoe					Packer					Top Plug	9.625	1	HES
Float Shoe					Bridge Plug					Bottom Plug			
Float Collar					Retainer					SSR plug set			
Insert Float										Plug Container	9.625	1	HES
Stage Tool										Centralizers			

Miscellaneous Materials

Gelling Agt	Conc	Surfactant	Conc	Acid Type	Qty	Conc	%
Treatment Fld	Conc	Inhibitor	Conc	Sand Type	Size	Qty	

Fluid Data

Stage/Plug #: 1									
Fluid #	Stage Type	Fluid Name	Qty	Qty uom	Mixing Density lbm/gal	Yield ft ³ /sk	Mix Fluid Gal/sk	Rate bbl/min	Total Mix Fluid Gal/sk

Stage/Plug #: 1

HALLIBURTON**Cementing Job Summary**

Stage/Plug #: 1									
Fluid #	Stage Type	Fluid Name	Qty	Qty uom	Mixing Density lbm/gal	Yield ft ³ /sk	Mix Fluid Gal/sk	Rate bbl/min	Total Mix Fluid Gal/sk
1	Fresh Water Spacer		20.00	bbl	8.4	.0	.0	4.0	
2	VersaCemGJ1 Lead Cement	VERSACEM (TM) SYSTEM (452010)	160.0	sacks	12.3	2.38	13.75	8.0	13.75
13.75 Gal		FRESH WATER							
3	VersaCemGJ1 Tail Cement	VERSACEM (TM) SYSTEM (452010)	160.0	sacks	12.8	2.11	11.75	8.0	11.75
11.75 Gal		FRESH WATER							
4	Fresh Water Displacement		88.00	bbl	8.4	.0	.0	10.0	
Calculated Values		Pressures		Volumes					
Displacement	87.5	Shut In: Instant		Lost Returns	0	Cement Slurry	129.8	Pad	
Top Of Cement	SURFACE	5 Min		Cement Returns	26	Actual Displacement	87.5	Treatment	
Frac Gradient		15 Min		Spacers		Load and Breakdown		Total Job	235
Rates									
Circulating	16	Mixing	8	Displacement	10	Avg. Job	9		
Cement Left In Pipe	Amount	43.9 ft	Reason	Shoe Joint					
Frac Ring # 1 @	ID	Frac ring # 2 @	ID	Frac Ring # 3 @	ID	Frac Ring # 4 @	ID		
The Information Stated Herein Is Correct				Customer Representative Signature					

The Road to Excellence Starts with Safety

Sold To #: 300721	Ship To #: 3000043	Quote #:	Sales Order #: 900462004
Customer: WPX ENERGY ROCKY MOUNTAIN LLC-EBUS	Customer Rep: Hartl, Al		
Well Name: RWF	Well #: 433-36	API/UWI #:	
Field: RULISON	City (SAP): RIFLE	County/Parish: Garfield	State: Colorado
Legal Description:			
Lat:		Long:	
Contractor: Nabors	Rig/Platform Name/Num: Nabors 576		
Job Purpose: Cement Surface Casing	Ticket Amount:		
Well Type: Development Well	Job Type: Cement Surface Casing		
Sales Person: MAYO, MARK	Srv Supervisor: MUHLESTEIN, RYAN	MBU ID Emp #: 453609	

Activity Description	Date/Time	Cht #	Rate bbl/min	Volume bbl		Pressure psig		Comments
				Stage	Total	Tubing	Casing	
Call Out	05/24/2013 05:30							
Pre-Convoy Safety Meeting	05/24/2013 07:00							WITH ALL HES PERSONNEL SAFE DRIVING PRACTICES AND TRAVEL ROUTE REVIEWED
Circulate Well	05/24/2013 08:45							CASING ON BOTTOM, CIRC. 1 HR, 16 BPM, 500 PSI. MUD REPORT 10.0 PPG PV 35, YP 45.
Arrive at Location from Service Center	05/24/2013 09:00							RIG ON BOTTOM CIRCULATING, HES CREW RUNNING BEHIND DUE TO BULK TRUCK - DOT ISSUES WHILE LEAVING YARD
Assessment Of Location Safety Meeting	05/24/2013 09:10							WITH ALL HES PERSONNEL
Pre-Rig Up Safety Meeting	05/24/2013 09:20							WITH ALL HES PERSONNEL
Rig-Up Equipment	05/24/2013 09:30							1 ELITE HT 400 PUMP, 1 660 BULK TRUCK, 1 F-450 PICK-UP, 1 PLUG CONTAINER, 2" IRON TO STAND PIPE, PLUG CONTAINER
Pre-Job Safety Meeting	05/24/2013 09:55							WITH ALL HES PERSONNEL, RIG CREW AND CO REP
Activity Description	Date/Time	Cht #	Rate bbl/min	Volume bbl		Pressure psig		Comments
				Stage	Total	Tubing	Casing	

Cementing Job Log

Start Job	05/24/2013 10:09							TD 1140', TP 1125.6' + 30 LANDING JOINT, FC 1081.7', SJ 43.9', OH 13.5", SURFACE CASING 9.625" 32.3# H-40.
Pump Water	05/24/2013 10:10		2	2			53.0	FRESH H2O, TO PRIME LINES
Test Lines	05/24/2013 10:11							HELD 3563 PSI MIN NO LEAKS
Pump Spacer 1	05/24/2013 10:16		4	20			87.0	FRESH H2O
Pump Lead Cement	05/24/2013 10:24		8	67.8			380.0	160 SKS 12.3 PPG 2.38 FT3/SK 13.75 GAL/SK WEIGHED VERIFIED VIA MUD SCALES WET AND DRY SAMPLES SUBMITTED
Pump Tail Cement	05/24/2013 10:35		8	60.1			330.0	160 SKS 12.8 PPG 2.11 FT3/SK 11.75 GAL/SK WEIGHED VERIFIED VIA MUD SCALES WET AND DRY SAMPLES SUBMITTED
Shutdown	05/24/2013 10:43							WASH UP ON TOP OF PLUG
Drop Top Plug	05/24/2013 10:44							VERIFY PLUG LAUNCHED
Pump Displacement	05/24/2013 10:45		10	87.5			560.0	CMT RETURNS 61 BBLS INTO DISPLACEMENT, 26 BBLS TO SURFACE
Slow Rate	05/24/2013 10:55		2	77			260.0	SLOW RATE 10 BBLS PRIOR TO CALCULATED DISPLACEMENT
Bump Plug	05/24/2013 10:58		2	87.5			800.0	BUMP PLUG HOLD 2 MINS
Check Floats	05/24/2013 11:00							FLOATS HOLDING, GOOD RETURNS THROUGHOUT JOB
End Job	05/24/2013 11:01							NO ADD HOURS OR DERRICK CHARGE. 40 LBS SUGAR USED
Pre-Rig Down Safety Meeting	05/24/2013 11:10							WITH ALL HES PERSONNEL
Rig-Down Equipment	05/24/2013 11:15							AREA FREE FROM DEBRIS
Pre-Convoy Safety Meeting	05/24/2013 11:55							WITH ALL HES PERSONNEL
Activity Description	Date/Time	Cht #	Rate bbl/ min	Volume bbl		Pressure psig		Comments
				Stage	Total	Tubing	Casing	

Sold To # : 300721

Ship To # : 3000043

Quote # :

Sales Order # : 900462004

SUMMIT Version: 7.3.0079

Friday, August 30, 2013 02:18:00

HALLIBURTON

Cementing Job Log

Crew Leave Location	05/24/2013 12:00							THANK YOU FOR USING HALLIBURTON CEMENT DEPARTMENT. RYAN MUHLESTEIN AND CREW
---------------------	---------------------	--	--	--	--	--	--	--

Sold To # : 300721

Ship To # :3000043

Quote # :

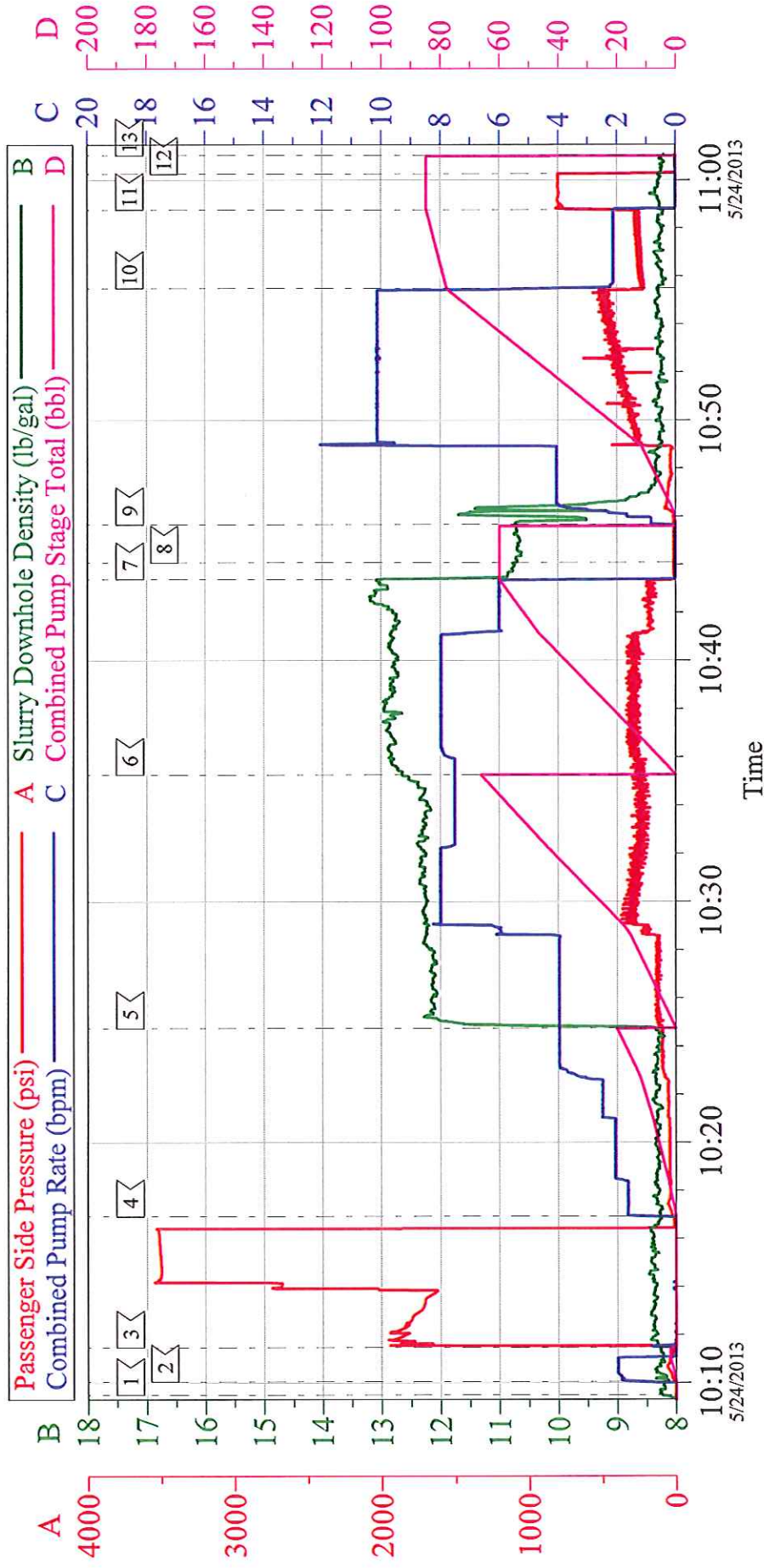
Sales Order # : 900462004

SUMMIT Version: 7.3.0079

Friday, August 30, 2013 02:18:00

WPX ROCKY MTN. - RWF 433-36

SURFACE



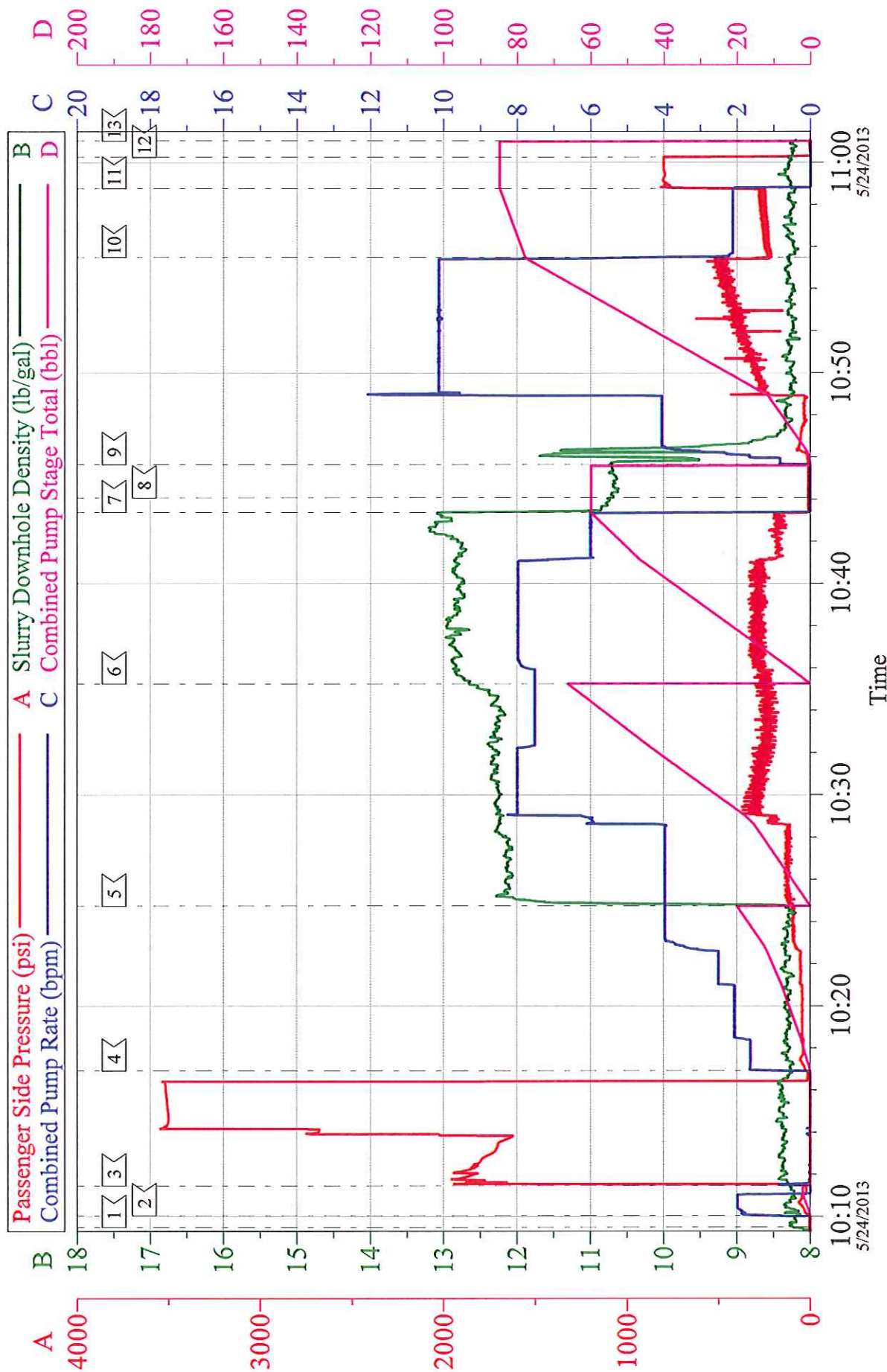
Customer: WPX ROCKY MTN.
Well Description: RWF 433-36
Company Rep: AL HARTL

Job Date: 24-May-2013
Job Type: SURFACE
Cement Supervisor: RYAN MUHLESTEIN

Sales Order #: 900462004
ADC Used: YES
Elite #: ADAM ANDERSON

WPX ROCKY MTN. - RWF 433-36

SURFACE



Customer: WPX ROCKY MTN.	Job Date: 24-May-2013	Sales Order #: 900462004
Well Description: RWF 433-36	Job Type: SURFACE	ADC Used: YES
Company Rep: AL HARTL	Cement Supervisor: RYAN MUHLESTEIN	Elite #7: ADAM ANDERSON