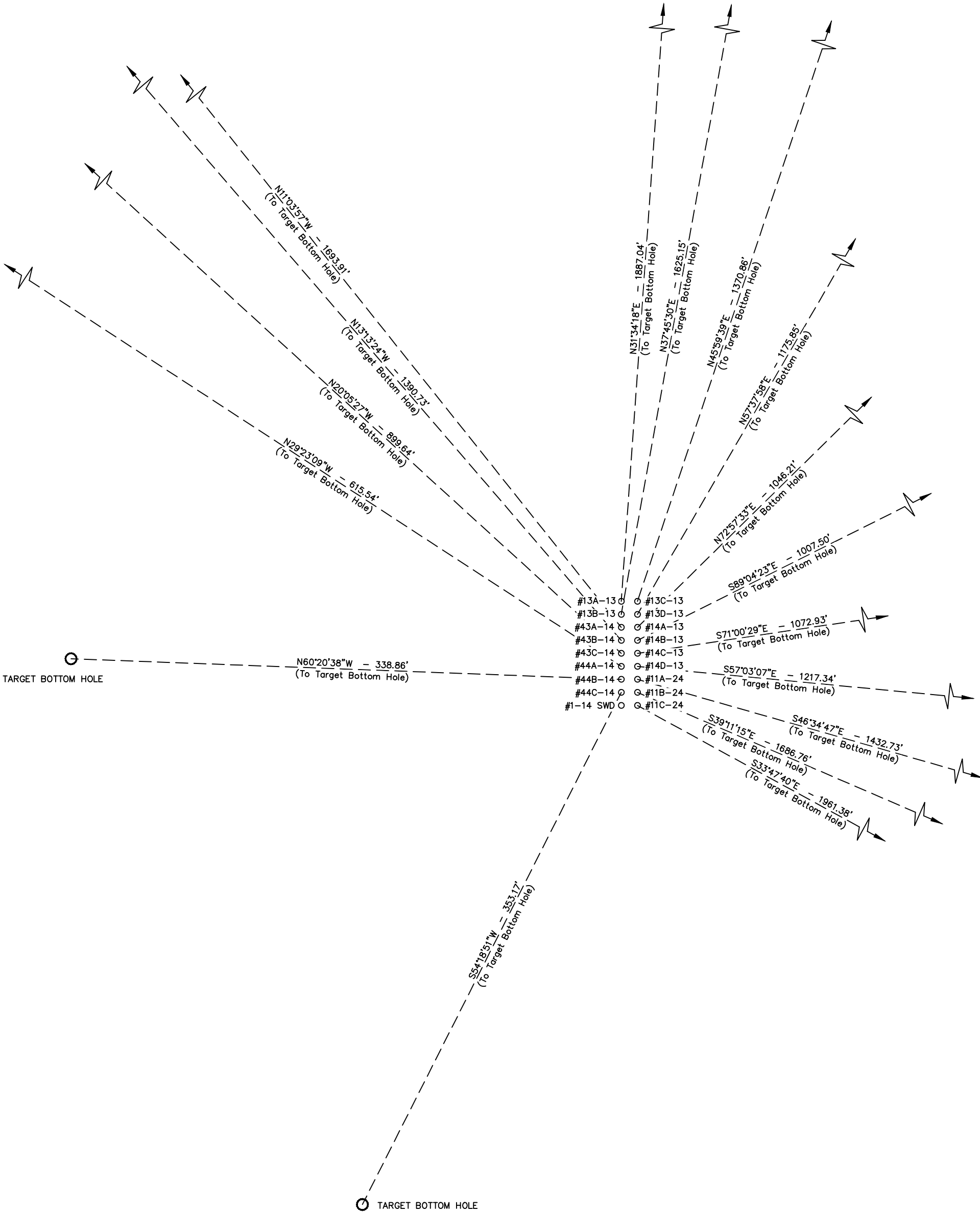


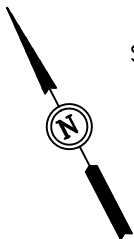
Caerus Piceance LLC  
TARGET BOTTOM HOLE DRAWING FOR  
NOLTE #14-796  
SECTION 14, T7S, R96W, 6th P.M.  
SE 1/4 SE 1/4

FIGURE #6



SCALE: 1" = 60'  
DATE: 09-04-13  
DRAWN BY: T.B.  
REVISED: 09-19-13 T.B.



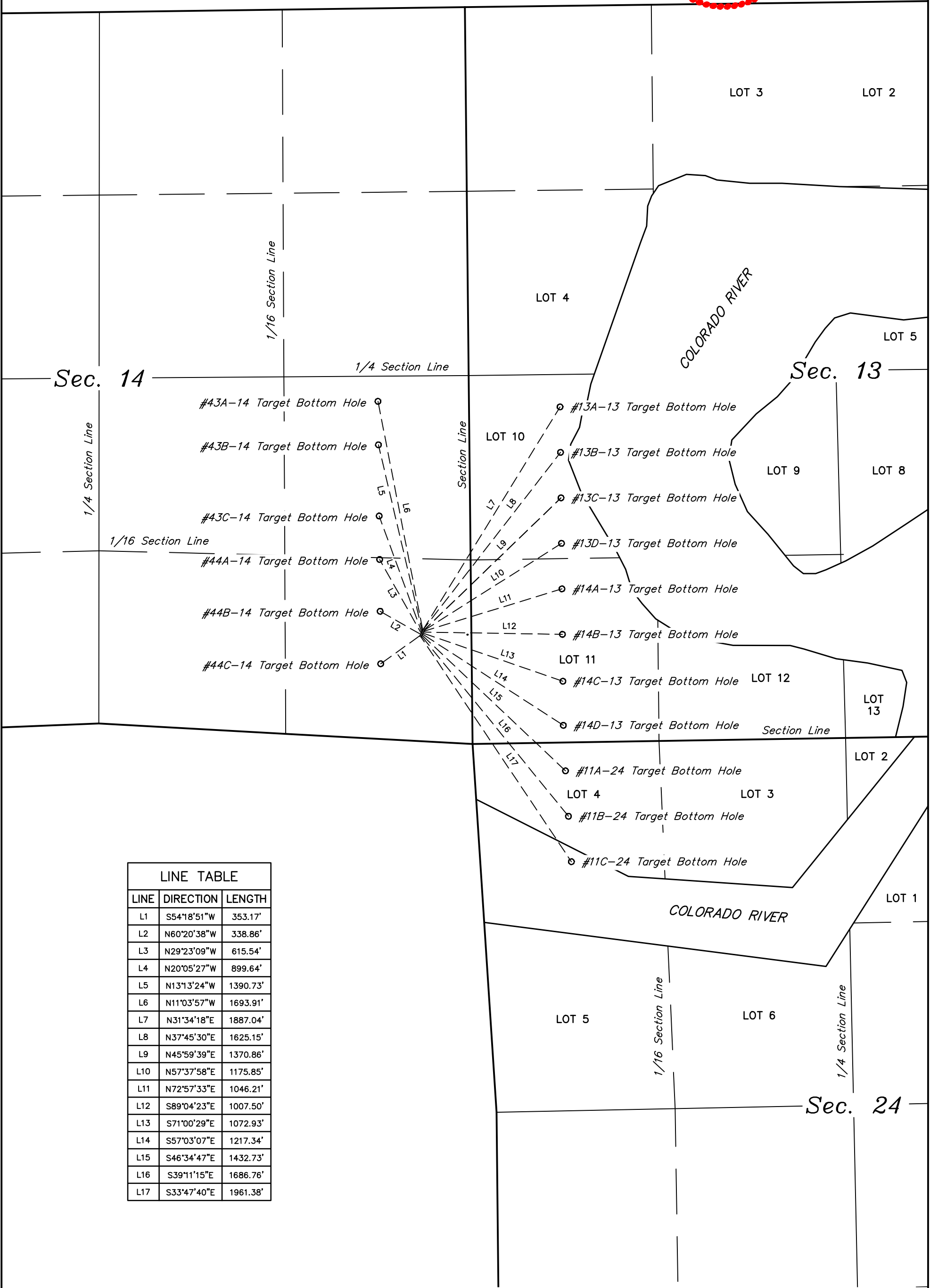


SCALE: NOT TO SCALE  
DATE: 09-14-13  
DRAWN BY: T.B.

Caerus Piceance LLC  
MULTI-WELL PLAN FOR  
NOLTE #14-796  
SECTION 14, T7S, R96W, 6th P.M.  
SE 1/4 SE 1/4

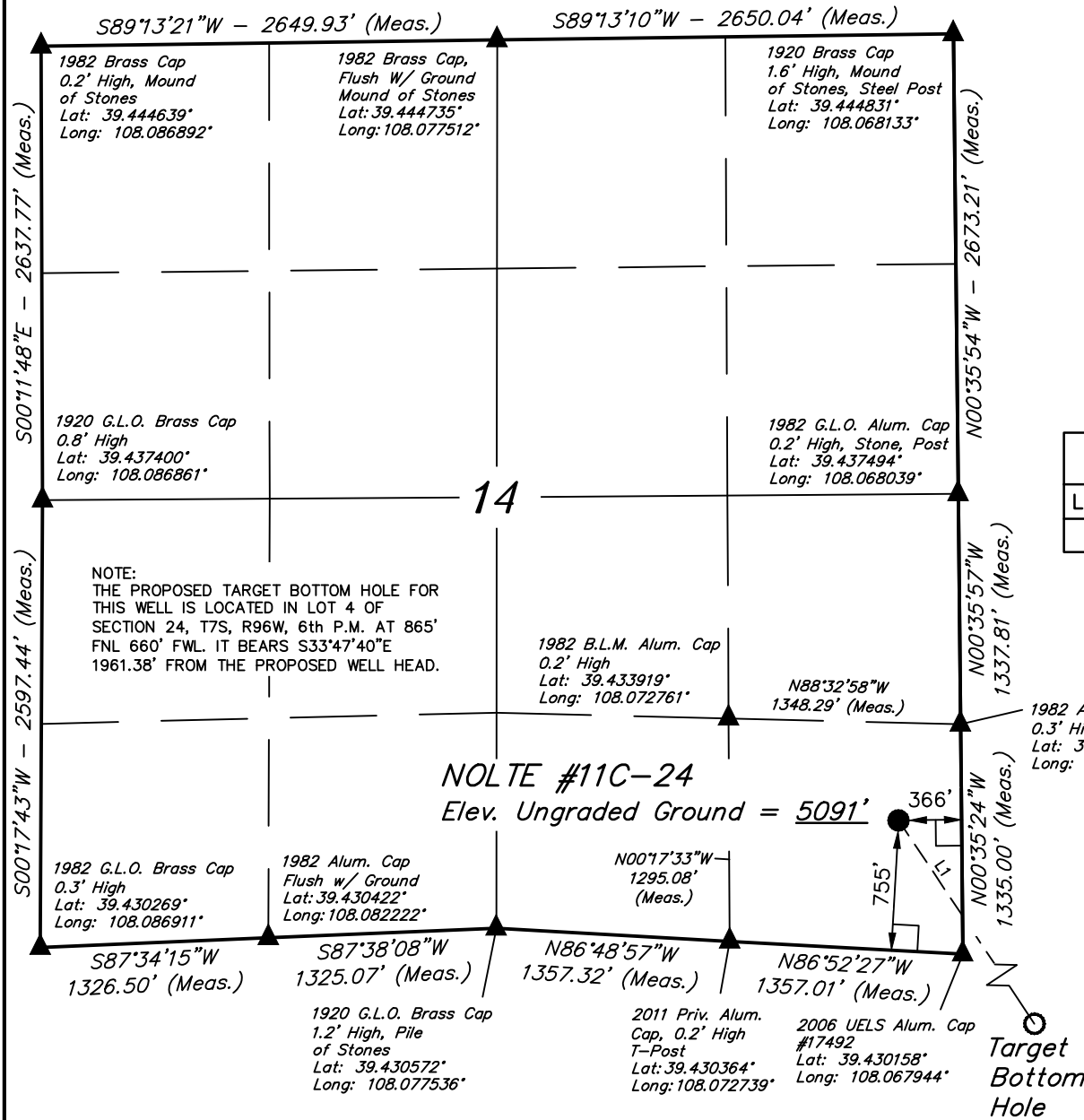


FIGURE #7



LINE TABLE		
LINE	DIRECTION	LENGTH
L1	S54°18'51"W	353.17'
L2	N60°20'38"W	338.86'
L3	N29°23'09"W	615.54'
L4	N20°05'27"W	899.64'
L5	N13°13'24"W	1390.73'
L6	N11°03'57"W	1693.91'
L7	N31°34'18"E	1887.04'
L8	N37°45'30"E	1625.15'
L9	N45°59'39"E	1370.86'
L10	N57°37'58"E	1175.85'
L11	N72°57'33"E	1046.21'
L12	S89°04'23"E	1007.50'
L13	S71°00'29"E	1072.93'
L14	S57°03'07"E	1217.34'
L15	S46°34'47"E	1432.73'
L16	S39°11'15"E	1686.76'
L17	S33°47'40"E	1961.38'

T7S, R96W, 6th P.M.



LEGEND:

- └─┘ = 90° SYMBOL
- = PROPOSED WELL HEAD.
- ▲ = SECTION CORNERS LOCATED.

Caerus Piceance LLC

Well location, NOLTE #11C-24 (SURFACE LOCATION), located as shown in the SE 1/4 SE 1/4 of Section 14, T7S, R96W, 6th P.M., Garfield County, Colorado.

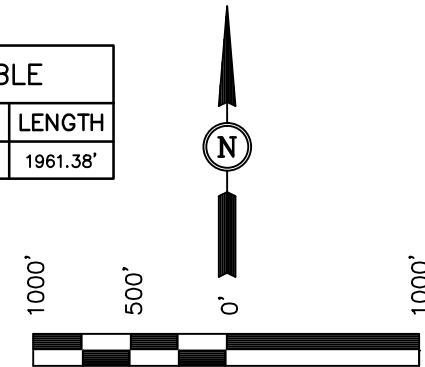
BASIS OF ELEVATION

SPOT ELEVATION AT THE NORTHWEST CORNER OF SECTION 30, T5S, R95W, 6th P.M., TAKEN FROM THE FORKED GULCH QUADRANGLE, GARFIELD COUNTY, COLORADO, 7.5 MINUTE QUAD. (TOPOGRAPHIC MAP) PUBLISHED BY THE UNITED STATES DEPARTMENT OF THE INTERIOR, GEOLOGICAL SURVEY. SAID ELEVATION IS MARKED AS BEING 5966 FEET.

BASIS OF BEARINGS

BASIS OF BEARINGS IS A G.P.S. OBSERVATION.

LINE TABLE		
LINE	DIRECTION	LENGTH
L1	S33°47'40"E	1961.38'



CERTIFICATE

THIS IS TO CERTIFY THAT THE ABOVE PLAT WAS PREPARED FROM FIELD NOTES OF ACTUAL SURVEYS MADE BY ME OR UNDER MY SUPERVISION AND THAT THE SAME ARE TRUE AND CORRECT TO THE BEST OF MY KNOWLEDGE AND BELIEF.

REGISTERED LAND SURVEYOR  
REGISTRATION NO. 17492  
STATE OF COLORADO 09-04-13

UINTAH ENGINEERING & LAND SURVEYING  
85 SOUTH 200 EAST - VERNAL, UTAH 84078  
(435) 789-1017

SCALE 1" = 1000'	DATE SURVEYED: 06-13-13	DATE DRAWN: 08-29-13
PARTY B.J. B.B. T.B.	REFERENCES G.L.O. PLAT	
WEATHER WARM	FILE Caerus Piceance LLC	

NAD 83 (SURFACE LOCATION)	
LATITUDE	= 39°25'56.25" (39.432292)
LONGITUDE	= 108°04'09.36" (108.069267)
NAD 27 (SURFACE LOCATION)	
LATITUDE	= 39°25'56.33" (39.432314)
LONGITUDE	= 108°04'07.09" (108.068636)

Surface  
Location

T7S, R96W, 6th P.M.

Caerus Piceance LLC

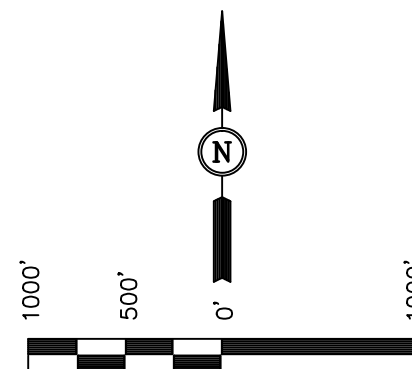
Well location, NOLTE #11C-24 (TARGET BOTTOM HOLE), located as shown in LOT 4 of Section 24, T7S, R96W, 6th P.M., Garfield County, Colorado.

### BASIS OF ELEVATION

SPOT ELEVATION AT THE NORTHWEST CORNER OF SECTION 30, T5S, R95W, 6th P.M., TAKEN FROM THE FORKED GULCH QUADRANGLE, GARFIELD COUNTY, COLORADO, 7.5 MINUTE QUAD. (TOPOGRAPHIC MAP) PUBLISHED BY THE UNITED STATES DEPARTMENT OF THE INTERIOR, GEOLOGICAL SURVEY. SAID ELEVATION IS MARKED AS BEING 5966 FEET.

### BASIS OF BEARINGS

BASIS OF BEARINGS IS A G.P.S. OBSERVATION.



SCALE  
CERTIFICATE

THIS IS TO CERTIFY THAT THE ABOVE PLAT WAS PREPARED FROM FIELD NOTES OF ACTUAL SURVEYS MADE BY ME OR UNDER MY SUPERVISION AND THAT THE SAME ARE TRUE AND CORRECT TO THE BEST OF MY KNOWLEDGE AND BELIEF.

REGISTERED LAND SURVEYOR  
REGISTRATION NO. 17492  
STATE OF COLORADO  
09-04-13

**UINTAH ENGINEERING & LAND SURVEYING**  
85 SOUTH 200 EAST - VERNAL, UTAH 84078  
(435) 789-1017

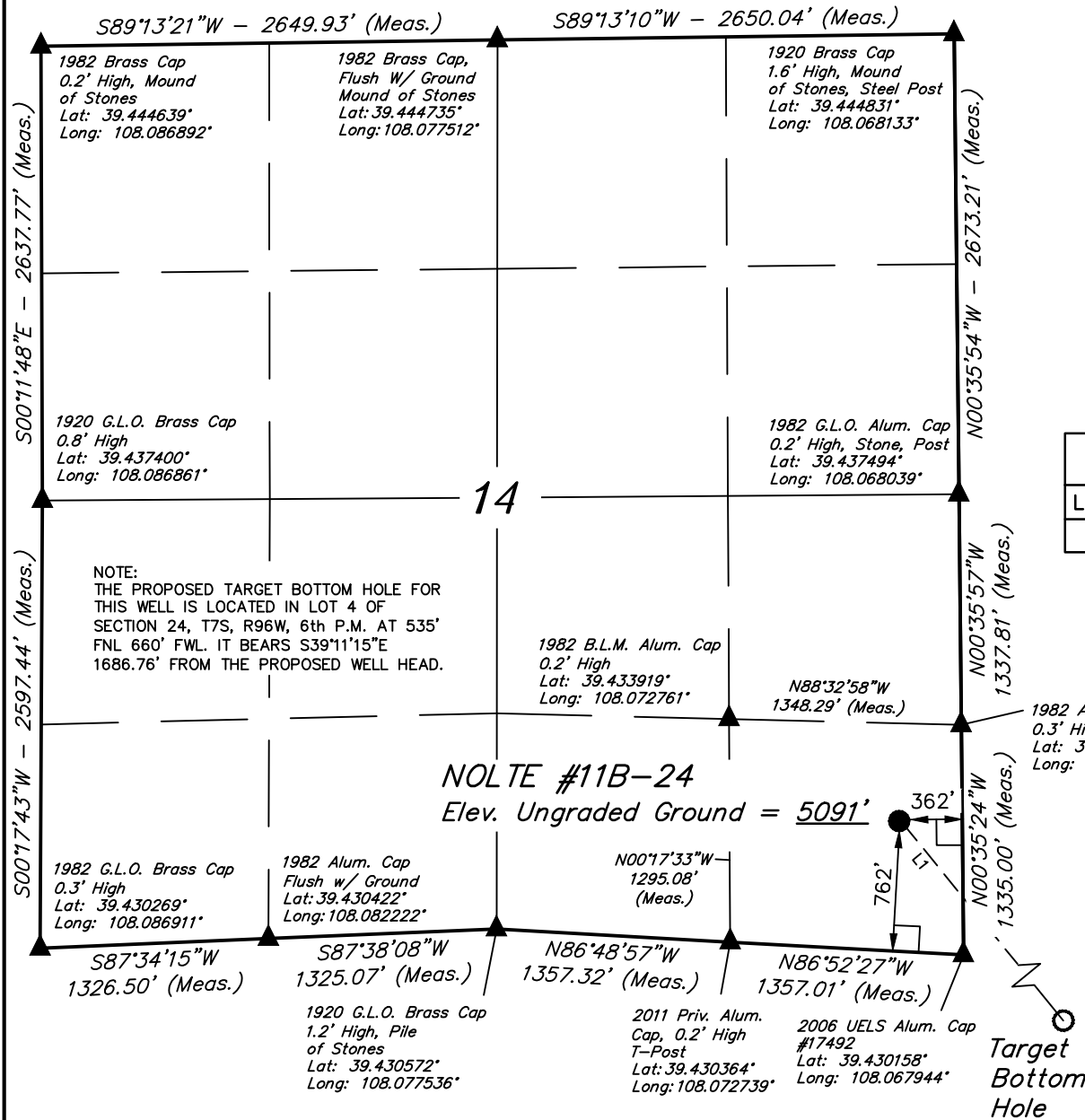
SCALE 1" = 1000'	DATE SURVEYED: 06-13-13	DATE DRAWN: 08-29-13
PARTY B.J. B.B. T.B.	REFERENCES G.L.O. PLAT	
WEATHER WARM	FILE Caerus Piceance LLC	

### LEGEND:

- └─┘ = 90° SYMBOL
- = PROPOSED WELL HEAD.
- ▲ = SECTION CORNERS LOCATED.

<b>NAD 83 (TARGET BOTTOM HOLE)</b>	
LATITUDE =	39°25'40.14" (39.427817)
LONGITUDE =	108°03'55.47" (108.065408)
<b>NAD 27 (TARGET BOTTOM HOLE)</b>	
LATITUDE =	39°25'40.22" (39.427839)
LONGITUDE =	108°03'53.20" (108.064778)

T7S, R96W, 6th P.M.



# LEGEND:

- └─┘ = 90° SYMBOL
- = PROPOSED WELL HEAD.
- ▲ = SECTION CORNERS LOCATED.

PDOP = 2.1

NAD 83 (SURFACE LOCATION)	
LATITUDE	= 39°25'56.32" (39.432311)
LONGITUDE	= 108°04'09.31" (108.069253)
NAD 27 (SURFACE LOCATION)	
LATITUDE	= 39°25'56.40" (39.432333)
LONGITUDE	= 108°04'07.04" (108.068622)

## Caerus Piceance LLC

Well location, NOLTE #11B-24 (SURFACE LOCATION), located as shown in the SE 1/4 SE 1/4 of Section 14, T7S, R96W, 6th P.M., Garfield County, Colorado.

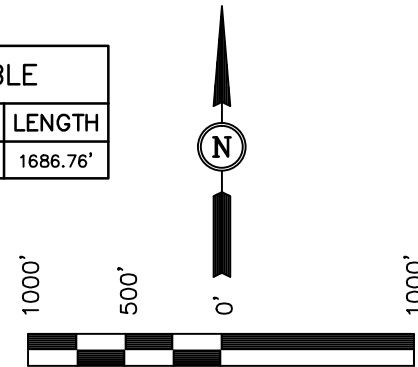
## BASIS OF ELEVATION

SPOT ELEVATION AT THE NORTHWEST CORNER OF SECTION 30, T5S, R95W, 6th P.M., TAKEN FROM THE FORKED GULCH QUADRANGLE, GARFIELD COUNTY, COLORADO, 7.5 MINUTE QUAD. (TOPOGRAPHIC MAP) PUBLISHED BY THE UNITED STATES DEPARTMENT OF THE INTERIOR, GEOLOGICAL SURVEY. SAID ELEVATION IS MARKED AS BEING 5966 FEET.

## BASIS OF BEARINGS

BASIS OF BEARINGS IS A G.P.S. OBSERVATION.

LINE TABLE		
LINE	DIRECTION	LENGTH
L1	S39°11'15"E	1686.76'



SCALE  
CERTIFICATE

THIS IS TO CERTIFY THAT THE ABOVE PLAT WAS PREPARED FROM FIELD NOTES OF ACTUAL SURVEYS MADE BY ME OR UNDER MY SUPERVISION AND THAT THE SAME ARE TRUE AND CORRECT TO THE BEST OF MY KNOWLEDGE AND BELIEF.

REGISTERED LAND SURVEYOR  
REGISTRATION NO. 17492  
STATE OF COLORADO  
09-04-13

**UINTAH ENGINEERING & LAND SURVEYING**  
85 SOUTH 200 EAST - VERNAL, UTAH 84078  
(435) 789-1017

SCALE 1" = 1000'	DATE SURVEYED: 06-13-13	DATE DRAWN: 08-29-13
PARTY B.J. B.B. T.B.	REFERENCES G.L.O. PLAT	
WEATHER WARM	FILE Caerus Piceance LLC	

Surface  
Location

T7S, R96W, 6th P.M.

Caerus Piceance LLC

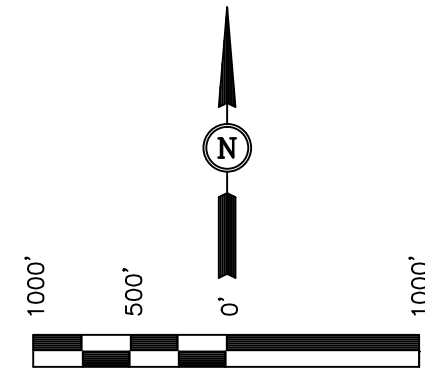
Well location, NOLTE #11B-24 (TARGET BOTTOM HOLE), located as shown in LOT 4 of Section 24, T7S, R96W, 6th P.M., Garfield County, Colorado.

### BASIS OF ELEVATION

SPOT ELEVATION AT THE NORTHWEST CORNER OF SECTION 30, T5S, R95W, 6th P.M., TAKEN FROM THE FORKED GULCH QUADRANGLE, GARFIELD COUNTY, COLORADO, 7.5 MINUTE QUAD. (TOPOGRAPHIC MAP) PUBLISHED BY THE UNITED STATES DEPARTMENT OF THE INTERIOR, GEOLOGICAL SURVEY. SAID ELEVATION IS MARKED AS BEING 5966 FEET.

### BASIS OF BEARINGS

BASIS OF BEARINGS IS A G.P.S. OBSERVATION.



SCALE  
CERTIFICATE

THIS IS TO CERTIFY THAT THE ABOVE PLAT WAS PREPARED FROM FIELD NOTES OF ACTUAL SURVEYS MADE BY ME OR UNDER MY SUPERVISION AND THAT THE SAME ARE TRUE AND CORRECT TO THE BEST OF MY KNOWLEDGE AND BELIEF.

REGISTERED LAND SURVEYOR  
REGISTRATION NO. 17492  
STATE OF COLORADO 09-04-13

UINTAH ENGINEERING & LAND SURVEYING  
85 SOUTH 200 EAST - VERNAL, UTAH 84078  
(435) 789-1017

SCALE 1" = 1000'	DATE SURVEYED: 06-13-13	DATE DRAWN: 08-29-13
PARTY B.J. B.B. T.B.	REFERENCES G.L.O. PLAT	
WEATHER WARM	FILE Caerus Piceance LLC	

### LEGEND:

- └─┘ = 90° SYMBOL
- = PROPOSED WELL HEAD.
- ▲ = SECTION CORNERS LOCATED.

NAD 83 (TARGET BOTTOM HOLE)	
LATITUDE	= 39°25'43.39" (39.428719)
LONGITUDE	= 108°03'55.74" (108.065483)
NAD 27 (TARGET BOTTOM HOLE)	
LATITUDE	= 39°25'43.47" (39.428742)
LONGITUDE	= 108°03'53.47" (108.064853)

R  
96  
W

R  
95  
W

S00°04'E  
1322.97' (G.L.O.)

S00°04'E  
1322.97' (G.L.O.)

24

2006 UELS  
Alum. Cap  
#17492  
Lat: 39.430158°  
Long: 108.067944°

1982 B.L.M. Alum. Cap  
0.2' High  
Lat: 39.422969°  
Long: 108.058167°

1982 Brass Cap  
Iron Mon. Box  
#11643  
Lat: 39.430397°  
Long: 108.048797°

NOTE:  
THE PROPOSED TARGET BOTTOM HOLE  
BEARS S39°11'15"E 1686.76' FROM THE  
PROPOSED WELL HEAD WHICH IS LOCATED IN  
THE SE 1/4 SE 1/4 OF SECTION 14, T7S,  
R96W, 6th P.M. AT 762' FSL 362' FEL.

Brass Cap  
Lat: 39.422828°  
Long: 108.067333°

1982 B.L.M. Alum. Cap  
Pile of Rocks  
Lat: 39.422969°  
Long: 108.058167°

1981 Alum. Cap  
#12770  
Lat: 39.423117°  
Long: 108.048714°

1982 B.L.M. Alum. Cap  
Lat: 39.419153°  
Long: 108.067286°

1982 Brass Cap  
0.3' High, Mound  
of Stones, Tree  
Lat: 39.415475°  
Long: 108.067236°

S88°27'W - 2619.54' (G.L.O.)

S88°27'W - 2619.54' (G.L.O.)

N03°43'28"W - 2676.88' (Meas.)

N00°36'19"W  
1339.42' (Meas.)

N00°36'16"W  
1339.51' (Meas.)

S89°04'17"W - 2705.17' (Meas.)

S89°02'17"W - 2705.22' (Meas.)

N01°16'02"W - 2663.08' (Meas.)

S00°32'45"E - 2652.33' (Meas.)

S88°50'08"W - 2590.37' (Meas.)

S88°48'25"W - 2671.79' (Meas.)

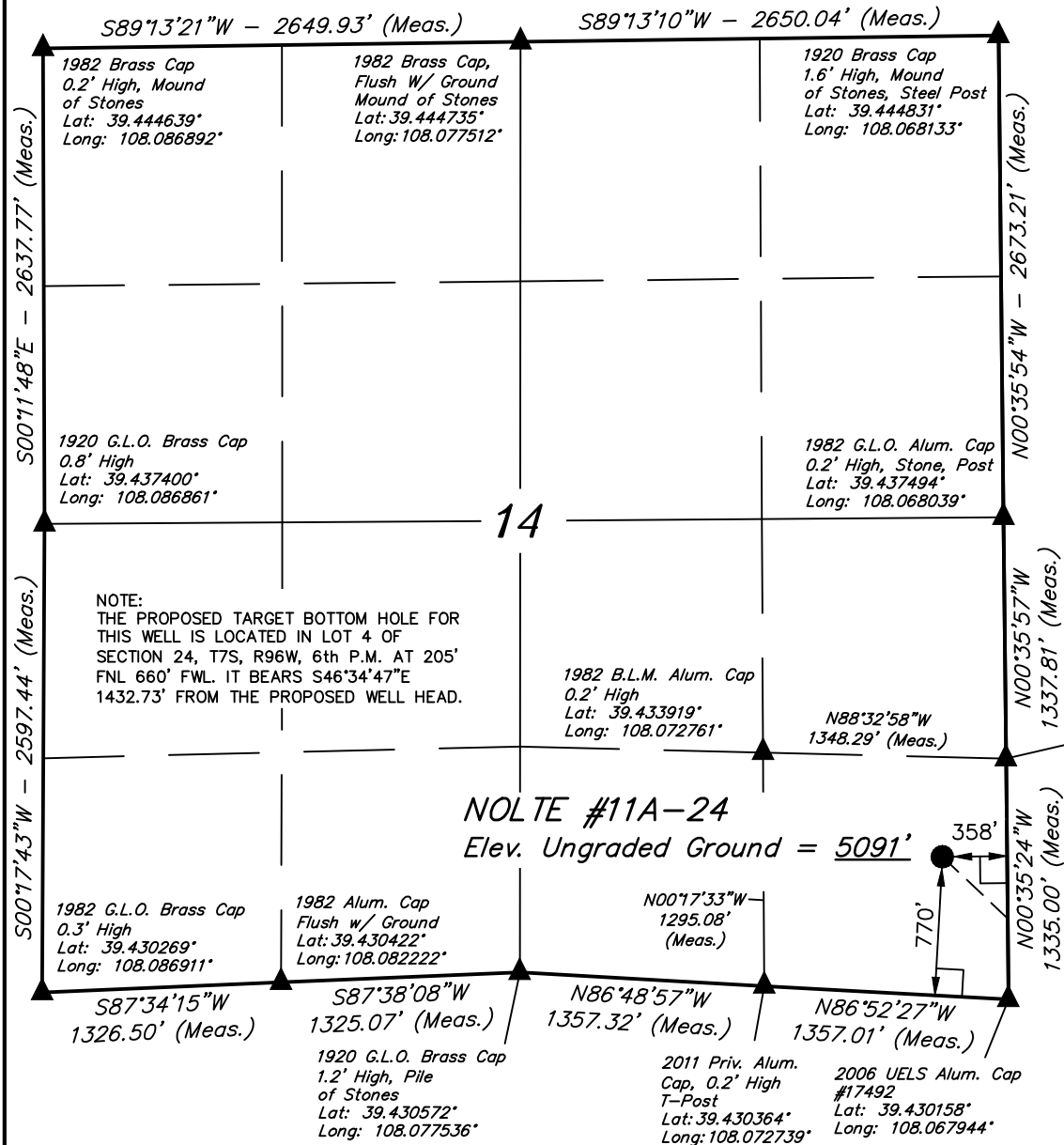
NOLTE #11B-24  
Target Bottom Hole

COLORADO

RIVER



T7S, R96W, 6th P.M.



Caerus Piceance LLC

Well location, NOLTE #11A-24 (SURFACE LOCATION), located as shown in the SE 1/4 SE 1/4 of Section 14, T7S, R96W, 6th P.M., Garfield County, Colorado.

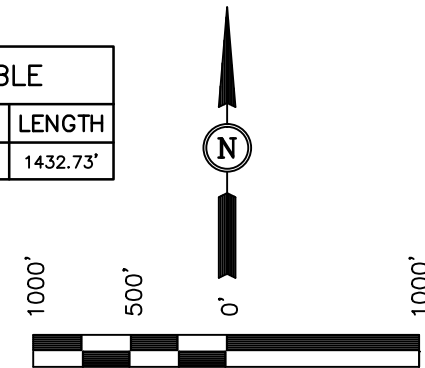
### BASIS OF ELEVATION

SPOT ELEVATION AT THE NORTHWEST CORNER OF SECTION 30, T5S, R95W, 6th P.M., TAKEN FROM THE FORKED GULCH QUADRANGLE, GARFIELD COUNTY, COLORADO, 7.5 MINUTE QUAD. (TOPOGRAPHIC MAP) PUBLISHED BY THE UNITED STATES DEPARTMENT OF THE INTERIOR, GEOLOGICAL SURVEY. SAID ELEVATION IS MARKED AS BEING 5966 FEET.

### BASIS OF BEARINGS

BASIS OF BEARINGS IS A G.P.S. OBSERVATION.

LINE TABLE		
LINE	DIRECTION	LENGTH
L1	S46°34'47"E	1432.73'



SCALE  
CERTIFICATE

THIS IS TO CERTIFY THAT THE ABOVE PLAT WAS PREPARED FROM FIELD NOTES OF ACTUAL SURVEYS MADE BY ME OR UNDER MY SUPERVISION AND THAT THE SAME ARE TRUE AND CORRECT TO THE BEST OF MY KNOWLEDGE AND BELIEF.

REGISTERED LAND SURVEYOR  
REGISTRATION NO. 17492  
STATE OF COLORADO  
09-04-13

**UINTAH ENGINEERING & LAND SURVEYING**  
85 SOUTH 200 EAST - VERNAL, UTAH 84078  
(435) 789-1017

### LEGEND:

- └─┘ = 90° SYMBOL
- = PROPOSED WELL HEAD.
- ▲ = SECTION CORNERS LOCATED.

PDOP = 2.1

NAD 83 (SURFACE LOCATION)	
LATITUDE	= 39°25'56.39" (39.432331)
LONGITUDE	= 108°04'09.26" (108.069239)
NAD 27 (SURFACE LOCATION)	
LATITUDE	= 39°25'56.47" (39.432353)
LONGITUDE	= 108°04'06.99" (108.068608)

SCALE 1" = 1000'	DATE SURVEYED: 06-13-13	DATE DRAWN: 08-29-13
PARTY B.J. B.B. T.B.	REFERENCES G.L.O. PLAT	
WEATHER WARM	FILE Caerus Piceance LLC	

*T7S, R96W, 6th P.M.*

Well location, NOLTE #11A-24 (TARGET BOTTOM HOLE), located as shown in LOT 4 of Section 24, T7S, R96W, 6th P.M., Garfield County, Colorado.

SPOT ELEVATION AT THE NORTHWEST CORNER OF SECTION 30, T5S, R95W, 6th P.M., TAKEN FROM THE FORKED GULCH QUADRANGLE, GARFIELD COUNTY, COLORADO, 7.5 MINUTE QUAD. (TOPOGRAPHIC MAP) PUBLISHED BY THE UNITED STATES DEPARTMENT OF THE INTERIOR, GEOLOGICAL SURVEY. SAID ELEVATION IS MARKED AS BEING 5966 FEET.

BASIS OF BEARINGS IS A G.P.S. OBSERVATION.






THIS IS TO CERTIFY THAT THE ABOVE PLAT WAS PREPARED FROM  
FIELD NOTES OF ACTUAL SURVEYS MADE BY ME OR UNDER MY  
SUPERVISION AND THAT THE SAME ARE TRUE AND CORRECT TO THE  
BEST OF MY KNOWLEDGE AND BELIEF.

REGISTERED LAND SURVEYOR  
REGISTRATION NO. 17492  
STATE OF COLORADO  
09-04-13

UTAH ENGINEERING & LAND SURVEYING  
 85 SOUTH 200 EAST - VERNAL, UTAH 84078  
 (435) 789-1017

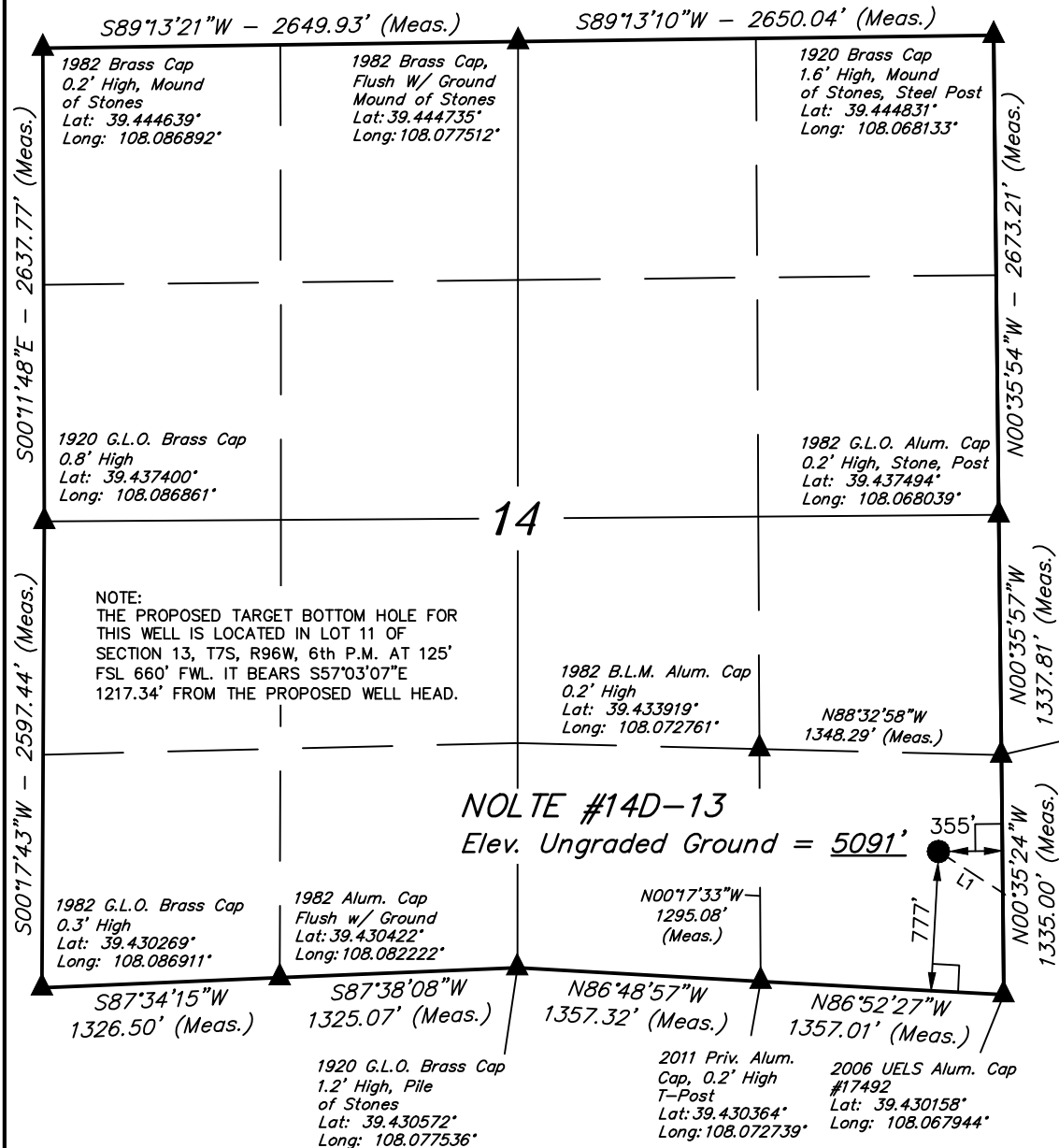
SCALE 1" = 1000'	DATE SURVEYED: 06-13-13	DATE DRAWN: 08-29-13
PARTY B.J. B.B. T.B.	REFERENCES G.L.O. PLAT	
WEATHER WARM	FILE Caerus Piceance LLC	

 = 90° SYMBOL  
 = PROPOSED WELL HEAD.  
 = SECTION CORNERS LOCATED.

<b>NAD 83 (TARGET BOTTOM HOLE)</b>	
LATITUDE =	39°25'46.65" (39.429625)
LONGITUDE =	108°03'56.01" (108.065558)
<b>NAD 27 (TARGET BOTTOM HOLE)</b>	
LATITUDE =	39°25'46.73" (39.429647)
LONGITUDE =	108°03'53.74" (108.064928)



T7S, R96W, 6th P.M.



# LEGEND:

- └─┘ = 90° SYMBOL
- = PROPOSED WELL HEAD.
- ▲ = SECTION CORNERS LOCATED.

PDOP = 2.1

NAD 83 (SURFACE LOCATION)	
LATITUDE	= 39°25'56.46" (39.432350)
LONGITUDE	= 108°04'09.22" (108.069228)
NAD 27 (SURFACE LOCATION)	
LATITUDE	= 39°25'56.54" (39.432372)
LONGITUDE	= 108°04'06.94" (108.068594)

## Caerus Piceance LLC

Well location, NOLTE #14D-13 (SURFACE LOCATION), located as shown in the SE 1/4 SE 1/4 of Section 14, T7S, R96W, 6th P.M., Garfield County, Colorado.

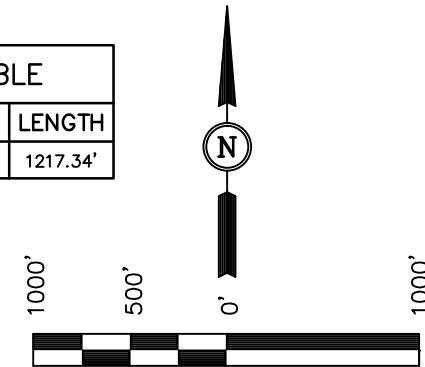
## BASIS OF ELEVATION

SPOT ELEVATION AT THE NORTHWEST CORNER OF SECTION 30, T5S, R95W, 6th P.M., TAKEN FROM THE FORKED GULCH QUADRANGLE, GARFIELD COUNTY, COLORADO, 7.5 MINUTE QUAD. (TOPOGRAPHIC MAP) PUBLISHED BY THE UNITED STATES DEPARTMENT OF THE INTERIOR, GEOLOGICAL SURVEY. SAID ELEVATION IS MARKED AS BEING 5966 FEET.

## BASIS OF BEARINGS

BASIS OF BEARINGS IS A G.P.S. OBSERVATION.

LINE TABLE		
LINE	DIRECTION	LENGTH
L1	S57°03'07"E	1217.34'



SCALE  
CERTIFICATE

THIS IS TO CERTIFY THAT THE ABOVE PLAT WAS PREPARED FROM FIELD NOTES OF ACTUAL SURVEYS MADE BY ME OR UNDER MY SUPERVISION AND THAT THE SAME ARE TRUE AND CORRECT TO THE BEST OF MY KNOWLEDGE AND BELIEF.

REGISTERED LAND SURVEYOR  
REGISTRATION NO. 17492  
STATE OF COLORADO

UINTAH ENGINEERING & LAND SURVEYING  
85 SOUTH 200 EAST - VERNAL, UTAH 84078  
(435) 789-1017

SCALE 1" = 1000'	DATE SURVEYED: 06-13-13	DATE DRAWN: 08-29-13
PARTY B.J. B.B. T.B.	REFERENCES G.L.O. PLAT	
WEATHER WARM	FILE Caerus Piceance LLC	

T7S, R96W, 6th P.M.

E 1/4 Cor. Sec. 12  
1973 Brass Cap  
0.1' High, Steel Post  
Lat: 39.452428°  
Long: 108.049101°

W.C. 1984 Priv. Brass Cap  
Flush w/Ground, #18480  
Lat: 39.445840°  
Long: 108.049016°

Caerus Piceance LLC

Well location, NOLTE #14D-13 (TARGET BOTTOM HOLE), located as shown in LOT 11 of Section 13, T7S, R96W, 6th P.M., Garfield County, Colorado.

# LINE TABLE

LINE	DIRECTION	LENGTH
L1	S57°03'07"E	1217.34'

## BASIS OF ELEVATION

SPOT ELEVATION AT THE NORTHWEST CORNER OF SECTION 30, T5S, R95W, 6th P.M., TAKEN FROM THE FORKED GULCH QUADRANGLE, GARFIELD COUNTY, COLORADO, 7.5 MINUTE QUAD. (TOPOGRAPHIC MAP) PUBLISHED BY THE UNITED STATES DEPARTMENT OF THE INTERIOR, GEOLOGICAL SURVEY. SAID ELEVATION IS MARKED AS BEING 5966 FEET.

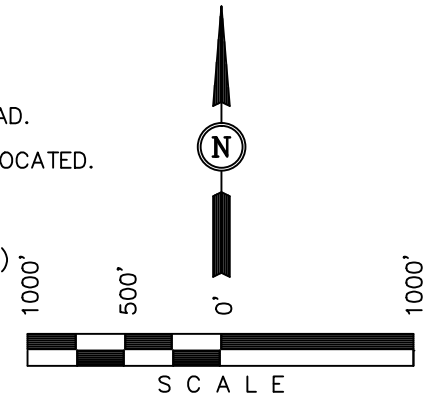
## BASIS OF BEARINGS

BASIS OF BEARINGS IS A G.P.S. OBSERVATION.

## LEGEND:

- └ = 90° SYMBOL
- = PROPOSED WELL HEAD.
- ▲ = SECTION CORNERS LOCATED.
- △ = SECTION CORNERS RE-ESTABLISHED. (Not Set on Ground.)

B.O.R. Brass Cap  
1.4' High  
Lat: 39.437672°  
Long: 108.048886°



## CERTIFICATE

THIS IS TO CERTIFY THAT THE ABOVE PLAT WAS PREPARED FROM FIELD NOTES OF ACTUAL SURVEYS MADE BY ME OR UNDER MY SUPERVISION AND THAT THE SAME ARE TRUE AND CORRECT TO THE BEST OF MY KNOWLEDGE AND BELIEF.

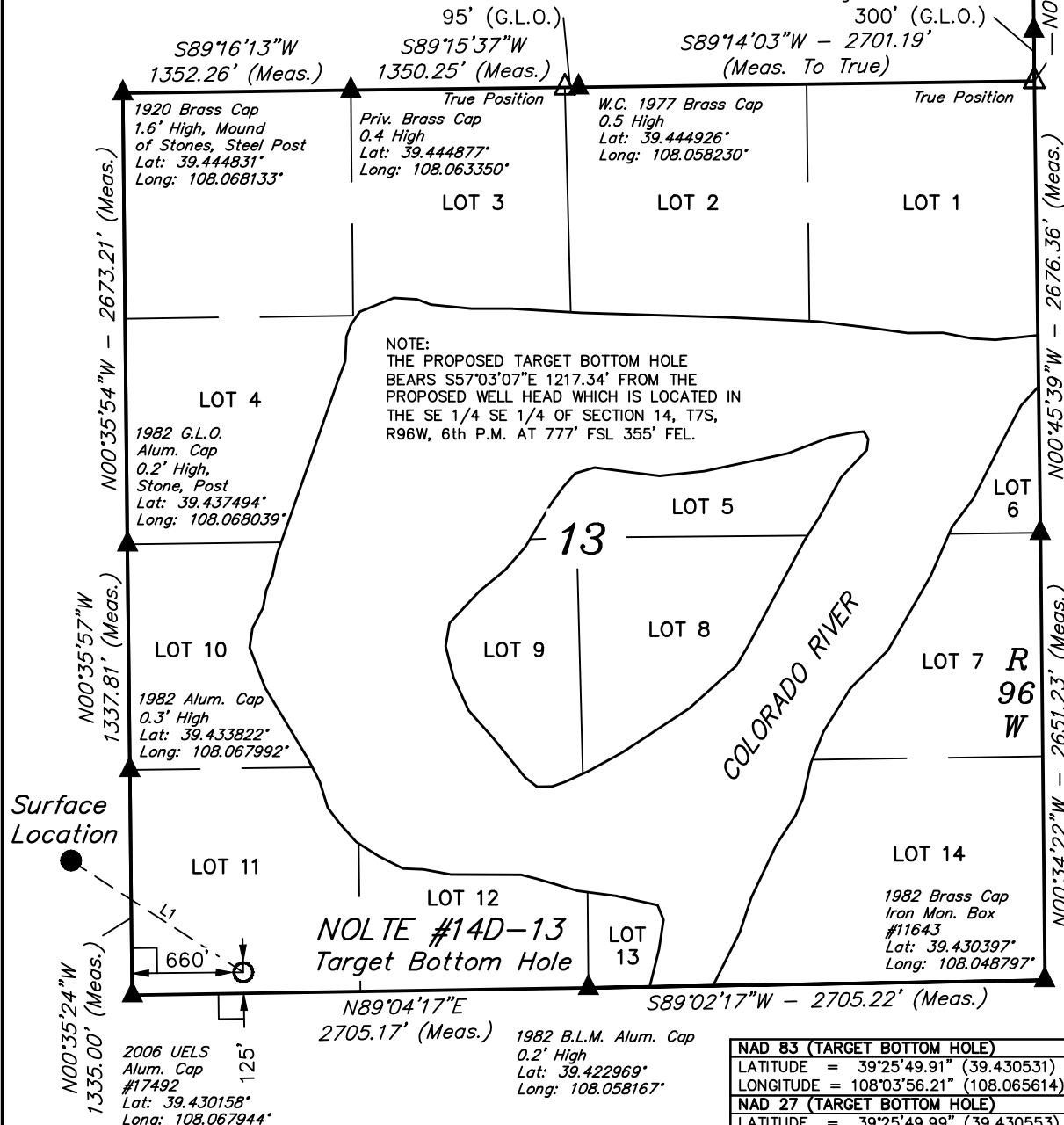
REGISTERED LAND SURVEYOR  
REGISTRATION NO. 17492  
STATE OF COLORADO  
09-04-13

UINTAH ENGINEERING & LAND SURVEYING

85 SOUTH 200 EAST - VERNAL, UTAH 84078

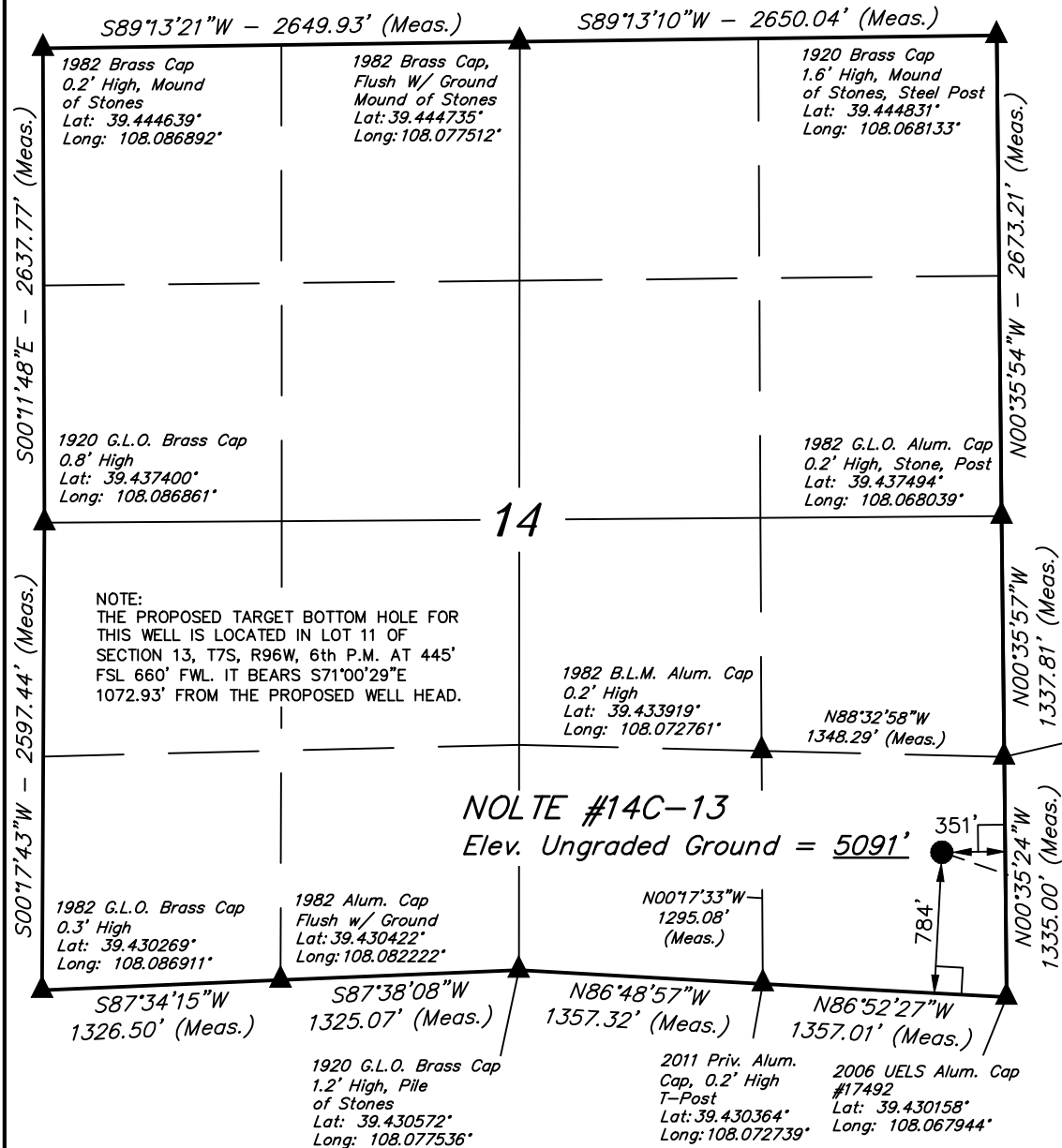
(435) 789-1017

SCALE 1" = 1000'	DATE SURVEYED: 06-13-13	DATE DRAWN: 08-29-13
PARTY B.J. B.B. T.B.	REFERENCES G.L.O. PLAT	
WEATHER WARM	FILE Caerus Piceance LLC	



NAD 83 (TARGET BOTTOM HOLE)	
LATITUDE	= 39°25'49.91" (39.430531)
LONGITUDE	= 108°03'56.21" (108.065614)
NAD 27 (TARGET BOTTOM HOLE)	
LATITUDE	= 39°25'49.99" (39.430553)
LONGITUDE	= 108°03'53.9" (108.064981)

T7S, R96W, 6th P.M.



Caerus Piceance LLC

Well location, NOLTE #14C-13 (SURFACE LOCATION), located as shown in the SE 1/4 SE 1/4 of Section 14, T7S, R96W, 6th P.M., Garfield County, Colorado.

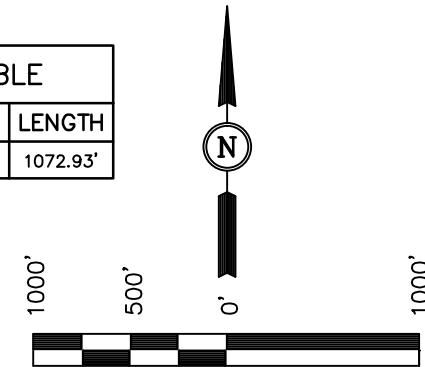
### BASIS OF ELEVATION

SPOT ELEVATION AT THE NORTHWEST CORNER OF SECTION 30, T5S, R95W, 6th P.M., TAKEN FROM THE FORKED GULCH QUADRANGLE, GARFIELD COUNTY, COLORADO, 7.5 MINUTE QUAD. (TOPOGRAPHIC MAP) PUBLISHED BY THE UNITED STATES DEPARTMENT OF THE INTERIOR, GEOLOGICAL SURVEY. SAID ELEVATION IS MARKED AS BEING 5966 FEET.

### BASIS OF BEARINGS

BASIS OF BEARINGS IS A G.P.S. OBSERVATION.

LINE TABLE		
LINE	DIRECTION	LENGTH
L1	S71°00'29"E	1072.93'



SCALE  
CERTIFICATE

THIS IS TO CERTIFY THAT THE ABOVE PLAT WAS PREPARED FROM FIELD NOTES OF ACTUAL SURVEYS MADE BY ME OR UNDER MY SUPERVISION AND THAT THE SAME ARE TRUE AND CORRECT TO THE BEST OF MY KNOWLEDGE AND BELIEF.

REGISTERED LAND SURVEYOR  
REGISTRATION NO. 17492  
STATE OF COLORADO

**UINTAH ENGINEERING & LAND SURVEYING**  
85 SOUTH 200 EAST - VERNAL, UTAH 84078  
(435) 789-1017

### LEGEND:

- └─┘ = 90° SYMBOL
- = PROPOSED WELL HEAD.
- ▲ = SECTION CORNERS LOCATED.

PDOP = 2.1

NAD 83 (SURFACE LOCATION)	
LATITUDE	= 39°25'56.53" (39.432369)
LONGITUDE	= 108°04'09.17" (108.069214)
NAD 27 (SURFACE LOCATION)	
LATITUDE	= 39°25'56.61" (39.432392)
LONGITUDE	= 108°04'06.90" (108.068583)

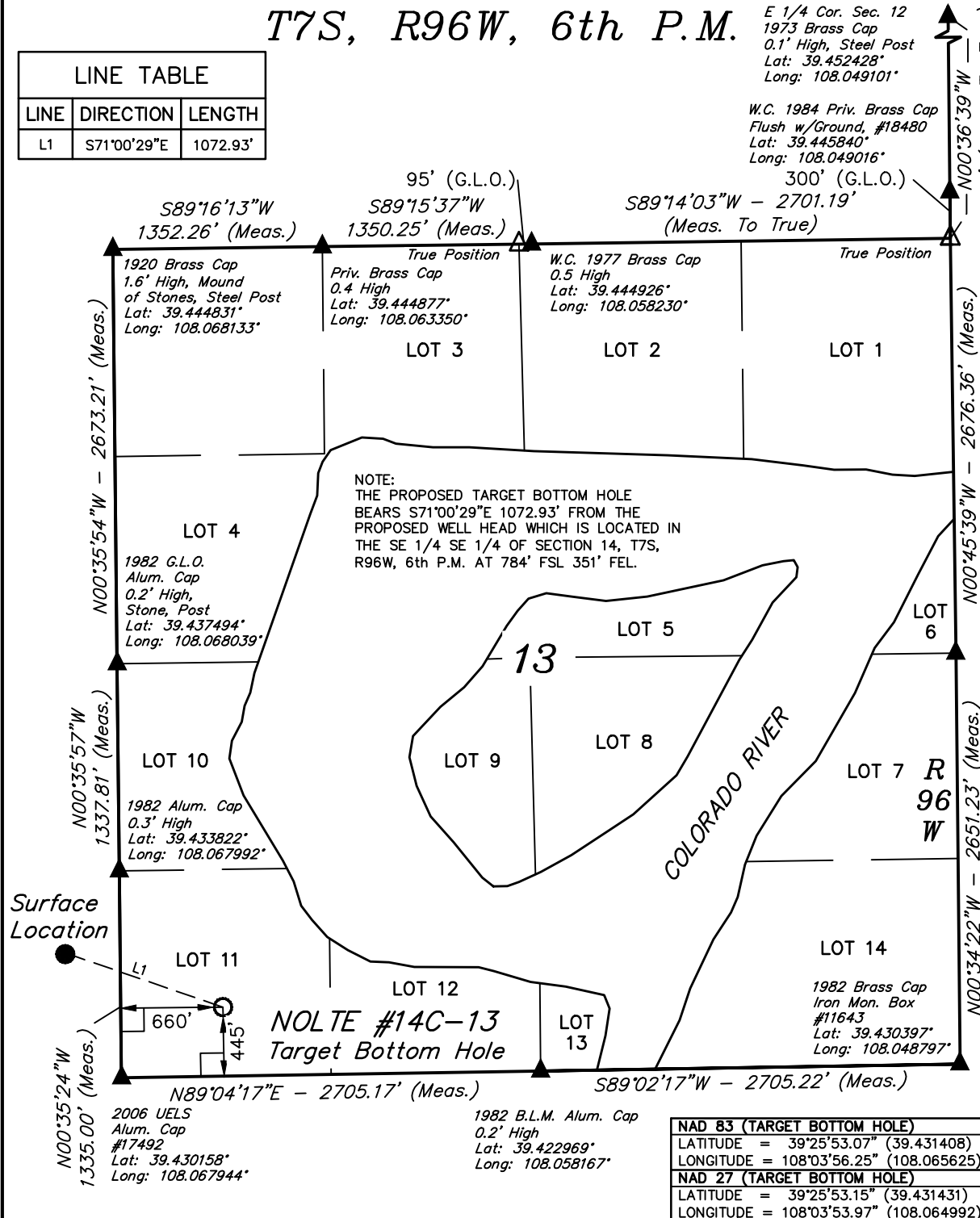
SCALE 1" = 1000'	DATE SURVEYED: 06-13-13	DATE DRAWN: 08-29-13
PARTY B.J. B.B. T.B.	REFERENCES G.L.O. PLAT	
WEATHER WARM	FILE Caerus Piceance LLC	

T7S, R96W, 6th P.M.

E 1/4 Cor. Sec. 12  
1973 Brass Cap  
0.1' High, Steel Post  
Lat: 39.452428°  
Long: 108.049101°

W.C. 1984 Priv. Brass Cap  
Flush w/Ground, #18480  
Lat: 39.445840°  
Long: 108.049016°

LINE TABLE		
LINE	DIRECTION	LENGTH
L1	S71°00'29"E	1072.93'



Caerus Piceance LLC

Well location, NOLTE #14C-13 (TARGET BOTTOM HOLE), located as shown in LOT 11 of Section 13, T7S, R96W, 6th P.M., Garfield County, Colorado.

### BASIS OF ELEVATION

SPOT ELEVATION AT THE NORTHWEST CORNER OF SECTION 30, T5S, R95W, 6th P.M., TAKEN FROM THE FORKED GULCH QUADRANGLE, GARFIELD COUNTY, COLORADO, 7.5 MINUTE QUAD. (TOPOGRAPHIC MAP) PUBLISHED BY THE UNITED STATES DEPARTMENT OF THE INTERIOR, GEOLOGICAL SURVEY. SAID ELEVATION IS MARKED AS BEING 5966 FEET.

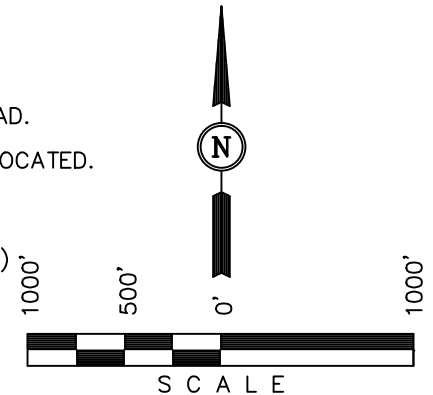
### BASIS OF BEARINGS

BASIS OF BEARINGS IS A G.P.S. OBSERVATION.

### LEGEND:

- └ = 90° SYMBOL
- = PROPOSED WELL HEAD.
- ▲ = SECTION CORNERS LOCATED.
- △ = SECTION CORNERS RE-ESTABLISHED. (Not Set on Ground.)

B.O.R. Brass Cap  
1.4' High  
Lat: 39.437672°  
Long: 108.048886°



### CERTIFICATE

THIS IS TO CERTIFY THAT THE ABOVE PLAT WAS PREPARED FROM FIELD NOTES OF ACTUAL SURVEYS MADE BY ME OR UNDER MY SUPERVISION AND THAT THE SAME ARE TRUE AND CORRECT TO THE BEST OF MY KNOWLEDGE AND BELIEF.

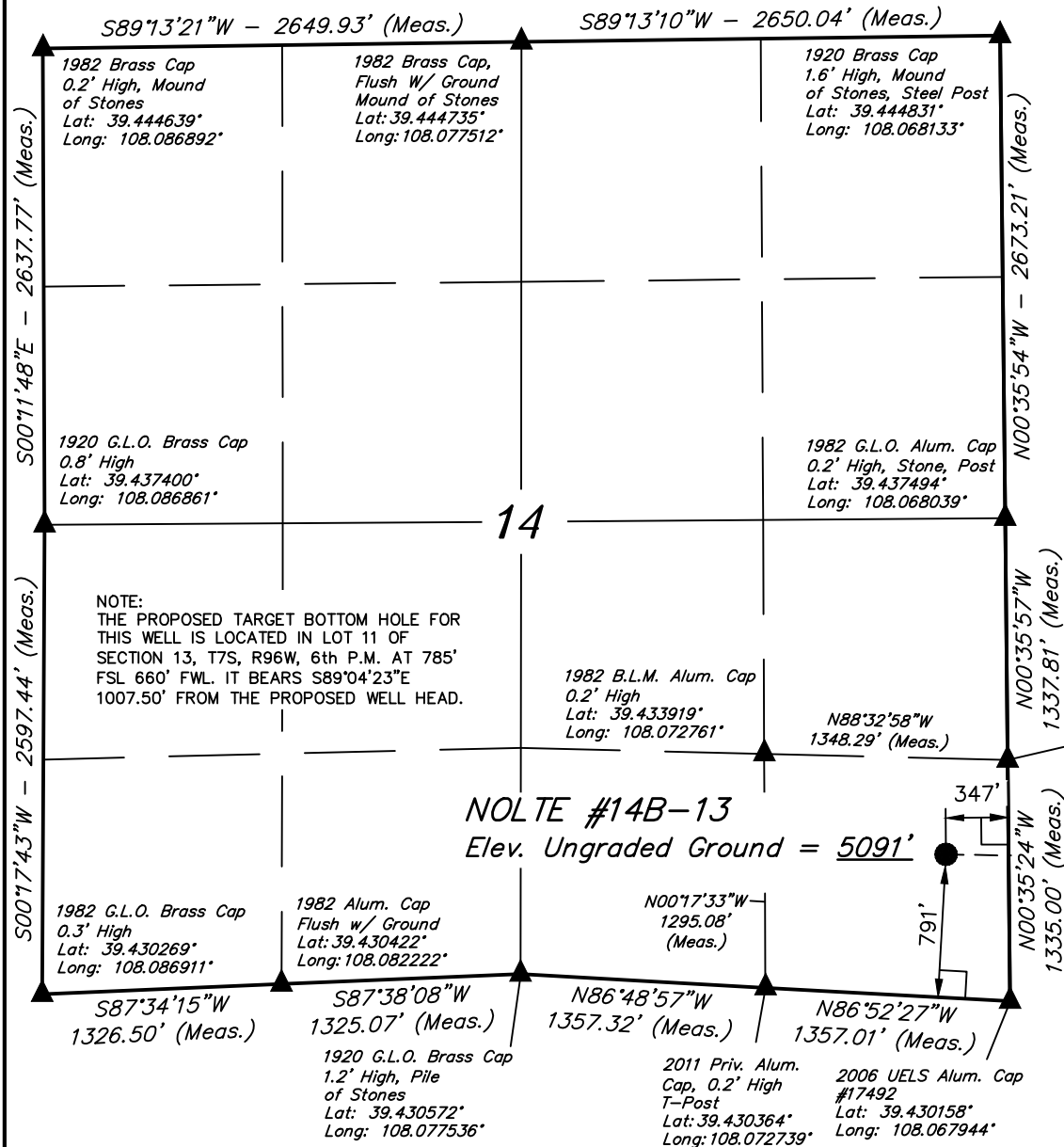
REGISTERED LAND SURVEYOR  
REGISTRATION NO. 17492  
STATE OF COLORADO  
09-04-13

UINTAH ENGINEERING & LAND SURVEYING  
85 SOUTH 200 EAST - VERNAL, UTAH 84078  
(435) 789-1017

SCALE 1" = 1000'	DATE SURVEYED: 06-13-13	DATE DRAWN: 08-29-13
PARTY B.J. B.B. T.B.	REFERENCES G.L.O. PLAT	
WEATHER WARM	FILE Caerus Piceance LLC	

NAD 83 (TARGET BOTTOM HOLE)	
LATITUDE	= 39°25'53.07" (39.431408)
LONGITUDE	= 108°03'56.25" (108.065625)
NAD 27 (TARGET BOTTOM HOLE)	
LATITUDE	= 39°25'53.15" (39.431431)
LONGITUDE	= 108°03'53.97" (108.064992)

T7S, R96W, 6th P.M.



Caerus Piceance LLC

Well location, NOLTE #14B-13 (SURFACE LOCATION), located as shown in the SE 1/4 SE 1/4 of Section 14, T7S, R96W, 6th P.M., Garfield County, Colorado.

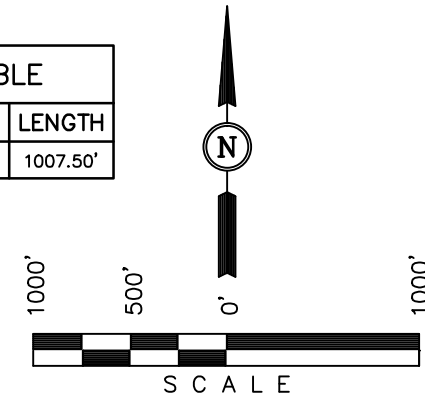
### BASIS OF ELEVATION

SPOT ELEVATION AT THE NORTHWEST CORNER OF SECTION 30, T5S, R95W, 6th P.M., TAKEN FROM THE FORKED GULCH QUADRANGLE, GARFIELD COUNTY, COLORADO, 7.5 MINUTE QUAD. (TOPOGRAPHIC MAP) PUBLISHED BY THE UNITED STATES DEPARTMENT OF THE INTERIOR, GEOLOGICAL SURVEY. SAID ELEVATION IS MARKED AS BEING 5966 FEET.

### BASIS OF BEARINGS

BASIS OF BEARINGS IS A G.P.S. OBSERVATION.

LINE TABLE		
LINE	DIRECTION	LENGTH
L1	S89°04'23"E	1007.50'



SCALE  
CERTIFICATE

THIS IS TO CERTIFY THAT THE ABOVE PLAT WAS PREPARED FROM FIELD NOTES OF ACTUAL SURVEYS MADE BY ME OR UNDER MY SUPERVISION AND THAT THE SAME ARE TRUE AND CORRECT TO THE BEST OF MY KNOWLEDGE AND BELIEF.

REGISTERED LAND SURVEYOR  
REGISTRATION NO. 17492  
STATE OF COLORADO  
09-04-13

UINTAH ENGINEERING & LAND SURVEYING  
85 SOUTH 200 EAST - VERNAL, UTAH 84078  
(435) 789-1017

### LEGEND:

- └─┘ = 90° SYMBOL
- = PROPOSED WELL HEAD.
- ▲ = SECTION CORNERS LOCATED.

PDOP = 2.1

NAD 83 (SURFACE LOCATION)	
LATITUDE	= 39°25'56.60" (39.432389)
LONGITUDE	= 108°04'09.12" (108.069200)
NAD 27 (SURFACE LOCATION)	
LATITUDE	= 39°25'56.68" (39.432411)
LONGITUDE	= 108°04'06.85" (108.068569)

SCALE 1" = 1000'	DATE SURVEYED: 06-13-13	DATE DRAWN: 08-29-13
PARTY B.J. B.B. T.B.	REFERENCES G.L.O. PLAT	
WEATHER WARM	FILE Caerus Piceance LLC	

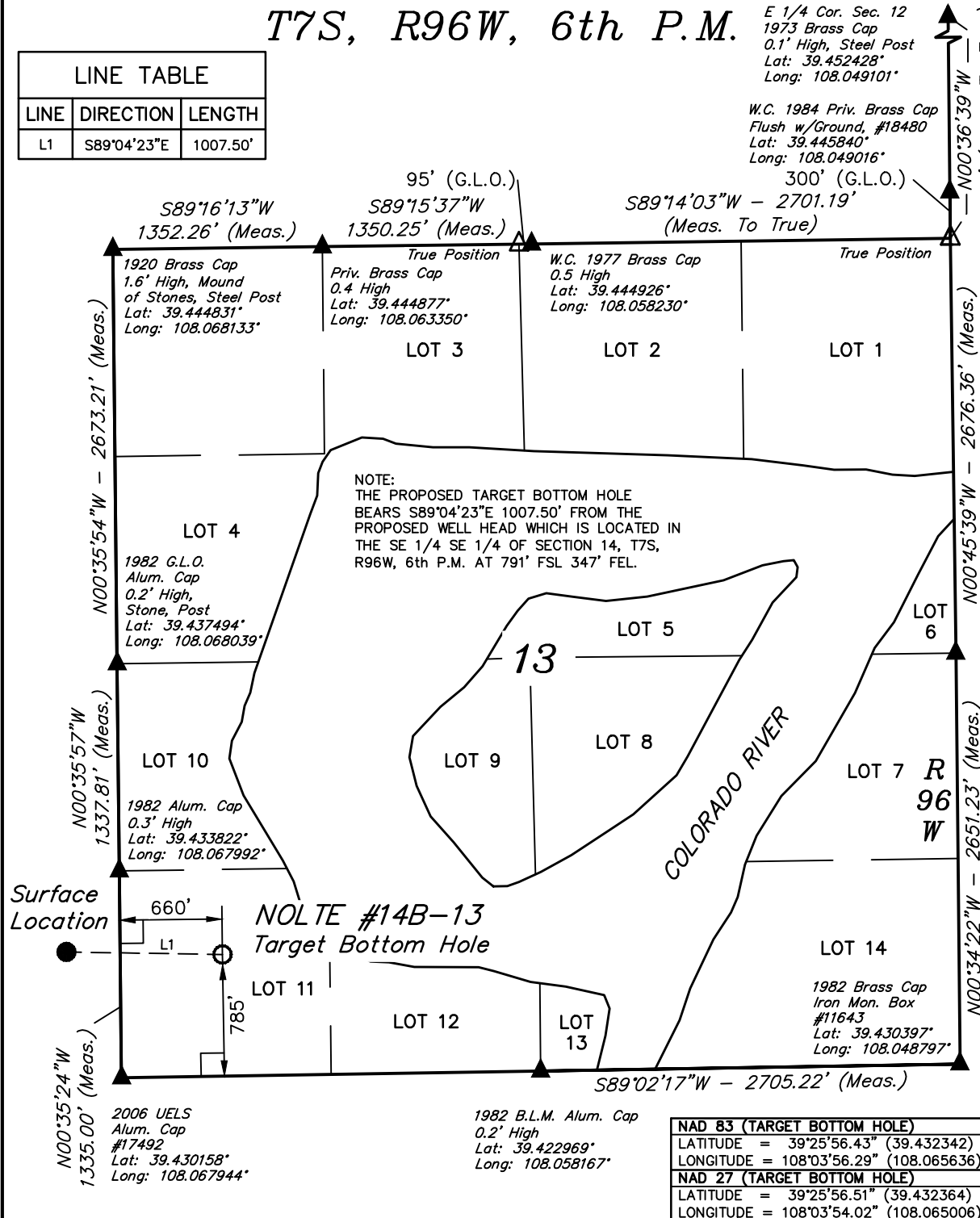


T7S, R96W, 6th P.M.

E 1/4 Cor. Sec. 12  
1973 Brass Cap  
0.1' High, Steel Post  
Lat: 39.452428°  
Long: 108.049101°

W.C. 1984 Priv. Brass Cap  
Flush w/Ground, #18480  
Lat: 39.445840°  
Long: 108.049016°

LINE TABLE		
LINE	DIRECTION	LENGTH
L1	S89°04'23"E	1007.50'



Caerus Piceance LLC

Well location, NOLTE #14B-13 (TARGET BOTTOM HOLE), located as shown in LOT 11 of Section 13, T7S, R96W, 6th P.M., Garfield County, Colorado.

### BASIS OF ELEVATION

SPOT ELEVATION AT THE NORTHWEST CORNER OF SECTION 30, T5S, R95W, 6th P.M., TAKEN FROM THE FORKED GULCH QUADRANGLE, GARFIELD COUNTY, COLORADO, 7.5 MINUTE QUAD. (TOPOGRAPHIC MAP) PUBLISHED BY THE UNITED STATES DEPARTMENT OF THE INTERIOR, GEOLOGICAL SURVEY. SAID ELEVATION IS MARKED AS BEING 5966 FEET.

### BASIS OF BEARINGS

BASIS OF BEARINGS IS A G.P.S. OBSERVATION.

### LEGEND:

- └─ = 90° SYMBOL
- = PROPOSED WELL HEAD.
- ▲ = SECTION CORNERS LOCATED.
- △ = SECTION CORNERS RE-ESTABLISHED. (Not Set on Ground.)



### CERTIFICATE

THIS IS TO CERTIFY THAT THE ABOVE PLAT WAS PREPARED FROM FIELD NOTES OF ACTUAL SURVEYS MADE BY ME OR UNDER MY SUPERVISION AND THAT THE SAME ARE TRUE AND CORRECT TO THE BEST OF MY KNOWLEDGE AND BELIEF.

REGISTERED LAND SURVEYOR  
REGISTRATION NO. 17492  
STATE OF COLORADO

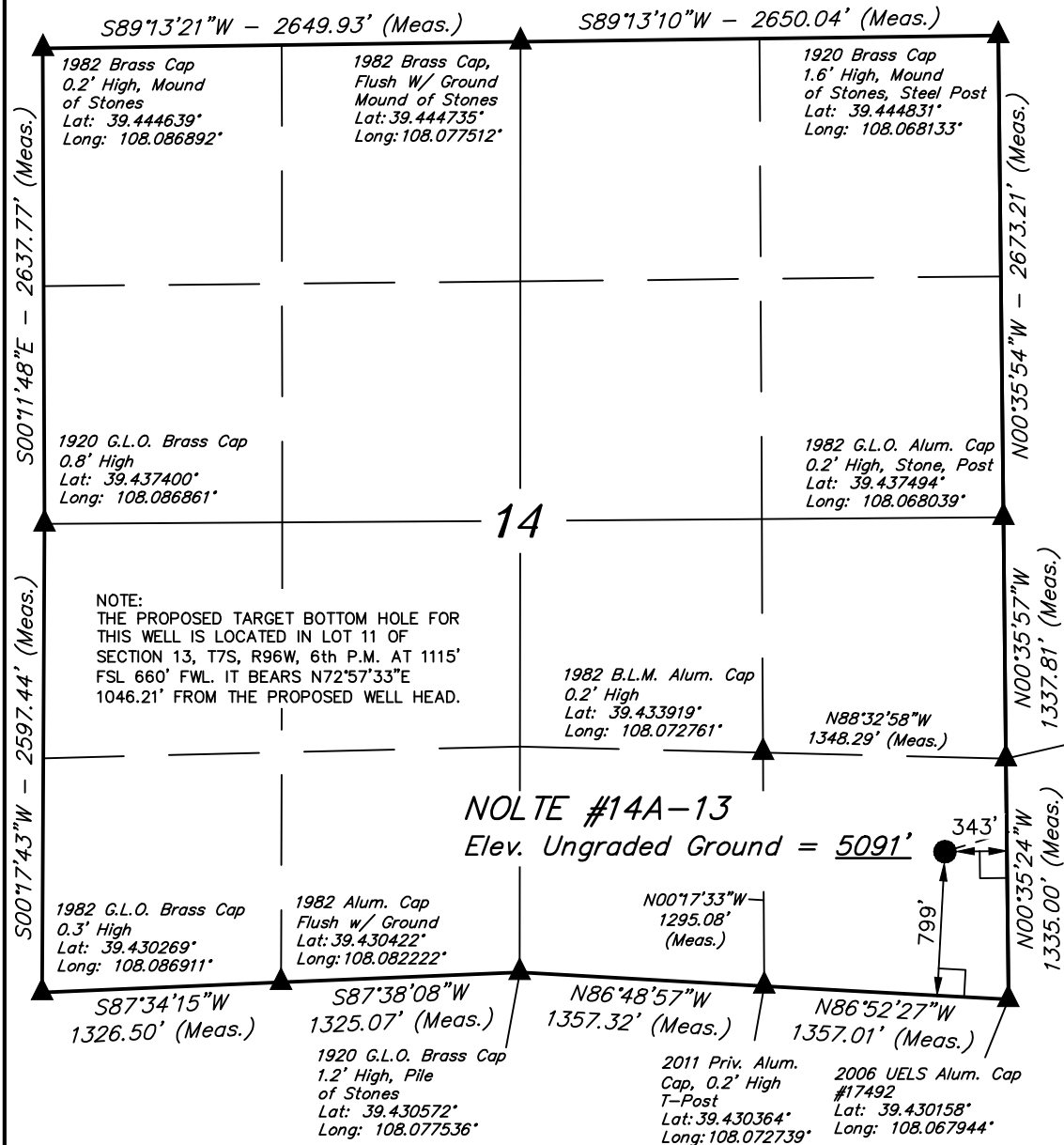
**UINTAH ENGINEERING & LAND SURVEYING**  
85 SOUTH 200 EAST - VERNAL, UTAH 84078  
(435) 789-1017

SCALE 1" = 1000'	DATE SURVEYED: 06-13-13	DATE DRAWN: 08-29-13
PARTY B.J. B.B. T.B.	REFERENCES G.L.O. PLAT	
WEATHER WARM	FILE Caerus Piceance LLC	

NAD 83 (TARGET BOTTOM HOLE)	
LATITUDE	= 39°25'56.43" (39.432342)
LONGITUDE	= 108°03'56.29" (108.065636)
NAD 27 (TARGET BOTTOM HOLE)	
LATITUDE	= 39°25'56.51" (39.432364)
LONGITUDE	= 108°03'54.02" (108.065006)



T7S, R96W, 6th P.M.



Caerus Piceance LLC

Well location, NOLTE #14A-13 (SURFACE LOCATION), located as shown in the SE 1/4 SE 1/4 of Section 14, T7S, R96W, 6th P.M., Garfield County, Colorado.

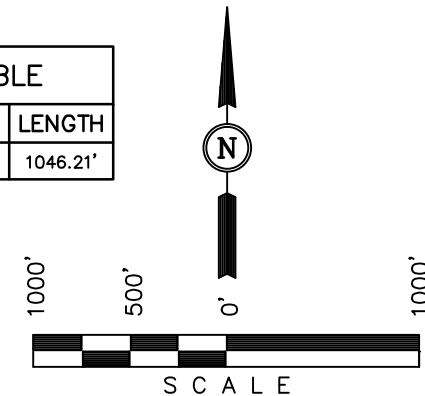
### BASIS OF ELEVATION

SPOT ELEVATION AT THE NORTHWEST CORNER OF SECTION 30, T5S, R95W, 6th P.M., TAKEN FROM THE FORKED GULCH QUADRANGLE, GARFIELD COUNTY, COLORADO, 7.5 MINUTE QUAD. (TOPOGRAPHIC MAP) PUBLISHED BY THE UNITED STATES DEPARTMENT OF THE INTERIOR, GEOLOGICAL SURVEY. SAID ELEVATION IS MARKED AS BEING 5966 FEET.

### BASIS OF BEARINGS

BASIS OF BEARINGS IS A G.P.S. OBSERVATION.

LINE TABLE		
LINE	DIRECTION	LENGTH
L1	N72°57'33"E	1046.21'



SCALE  
CERTIFICATE

THIS IS TO CERTIFY THAT THE ABOVE PLAT WAS PREPARED FROM FIELD NOTES OF ACTUAL SURVEYS MADE BY ME OR UNDER MY SUPERVISION AND THAT THE SAME ARE TRUE AND CORRECT TO THE BEST OF MY KNOWLEDGE AND BELIEF.

REGISTERED LAND SURVEYOR  
REGISTRATION NO. 17492  
STATE OF COLORADO  
09-04-13

UINTAH ENGINEERING & LAND SURVEYING  
85 SOUTH 200 EAST - VERNAL, UTAH 84078  
(435) 789-1017

### LEGEND:

- └─┘ = 90° SYMBOL
- = PROPOSED WELL HEAD.
- ▲ = SECTION CORNERS LOCATED.

PDOP = 2.1

NAD 83 (SURFACE LOCATION)	
LATITUDE	= 39°25'56.67" (39.432408)
LONGITUDE	= 108°04'09.08" (108.069189)
NAD 27 (SURFACE LOCATION)	
LATITUDE	= 39°25'56.75" (39.432431)
LONGITUDE	= 108°04'06.80" (108.068556)

SCALE 1" = 1000'	DATE SURVEYED: 06-13-13	DATE DRAWN: 08-29-13
PARTY B.J. B.B. T.B.	REFERENCES G.L.O. PLAT	
WEATHER WARM	FILE Caerus Piceance LLC	

E 1/4 Cor. Sec. 12  
1973 Brass Cap  
0.1' High, Steel Post  
Lat: 39.452428°  
Long: 108.049101°

W.C. 1984 Priv. Brass Cap  
Flush w/Ground, #18480  
Lat: 39.445840°  
Long: 108.049016°

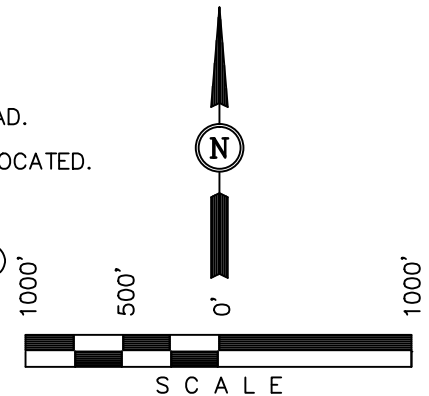
Well location, NOLTE #14A-13 (TARGET BOTTOM HOLE), located as shown in LOT 11 of Section 13, T7S, R96W, 6th P.M., Garfield County, Colorado.

SPOT ELEVATION AT THE NORTHWEST CORNER OF SECTION 30, T5S, R95W, 6th P.M., TAKEN FROM THE FORKED GULCH QUADRANGLE, GARFIELD COUNTY, COLORADO, 7.5 MINUTE QUAD. (TOPOGRAPHIC MAP) PUBLISHED BY THE UNITED STATES DEPARTMENT OF THE INTERIOR, GEOLOGICAL SURVEY. SAID ELEVATION IS MARKED AS BEING 5966 FEET.

BASIS OF BEARINGS IS A G.P.S. OBSERVATION.

L = 90° SYMBOL  
 ● = PROPOSED WELL HEAD.  
 ▲ = SECTION CORNERS LOCATED.  
 △ = SECTION CORNERS  
 RE-ESTABLISHED.  
 (Not Set on Ground.)

B.O.R. Brass Cap  
1.4' High  
Lat: 39.437672°  
Long: 108.048886°



THIS IS TO CERTIFY THAT THE ABOVE PLAT WAS PREPARED FROM  
FIELD NOTES OF ACTUAL SURVEYS MADE BY ME OR UNDER MY  
SUPERVISION AND THAT THE SAME ARE TRUE AND CORRECT TO THE  
BEST OF MY KNOWLEDGE AND BELIEF.

REGISTERED LAND SURVEYOR  
REGISTRATION NO. 17492  
STATE OF COLORADO  
09-04-13

85 SOUTH 200 EAST - VERNAL, UTAH 84078

SCALE 1" = 1000'	DATE SURVEYED: 06-13-13	DATE DRAWN: 08-29-13
PARTY B.J. B.B. T.B.	REFERENCES G.L.O. PLAT	
WEATHER WARM	FILE Caerus Piceance LLC	

NOTE:  
THE PROPOSED TARGET BOTTOM HOLE  
BEARS N72°57'33"E 1046.21' FROM THE  
PROPOSED WELL HEAD WHICH IS LOCATED IN  
THE SE 1/4 SE 1/4 OF SECTION 14, T7S,  
R96W, 6th P.M. AT 799' FSL 343' FEL.

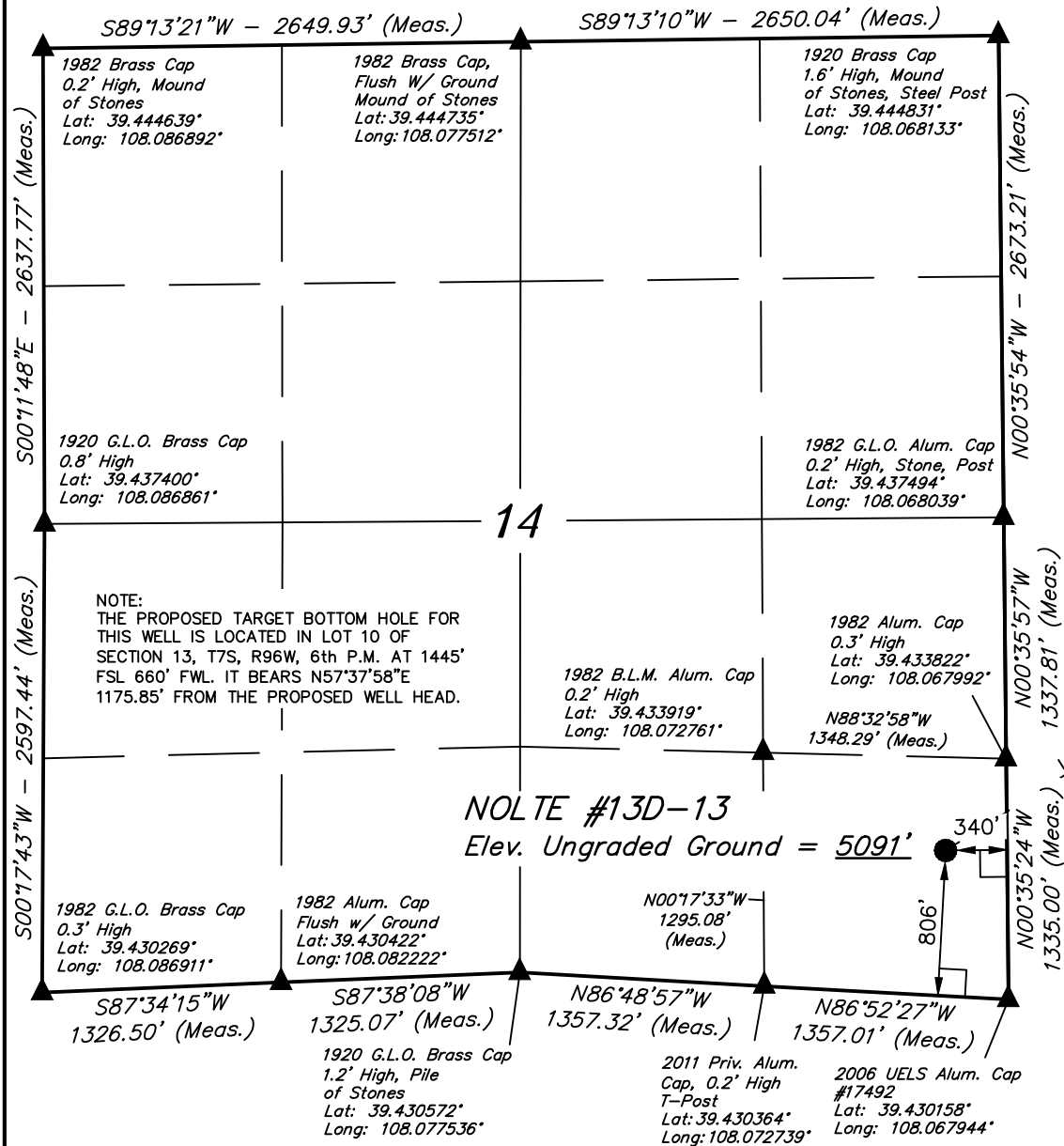
COLORADO RIVER

LOT 7 *R* 96 *W* 51.23' *R* 95 *W*

LOT 14  
1982 Brass Cap  
Iron Mon. Box  
#11643  
Lat: 39.430397°  
Long: 108.048797°

<b>NAD 83 (TARGET BOTTOM HOLE)</b>	
LATITUDE	= 39°25'59.69" (39.433247)
LONGITUDE	= 108°03'56.33" (108.065647)
<b>NAD 27 (TARGET BOTTOM HOLE)</b>	
LATITUDE	= 39°25'59.77" (39.433269)
LONGITUDE	= 108°03'54.06" (108.065017)

T7S, R96W, 6th P.M.



Caerus Piceance LLC

Well location, NOLTE #13D-13 (SURFACE LOCATION), located as shown in the SE 1/4 SE 1/4 of Section 14, T7S, R96W, 6th P.M., Garfield County, Colorado.

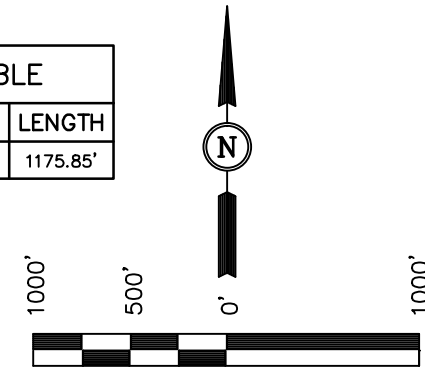
### BASIS OF ELEVATION

SPOT ELEVATION AT THE NORTHWEST CORNER OF SECTION 30, T5S, R95W, 6th P.M., TAKEN FROM THE FORKED GULCH QUADRANGLE, GARFIELD COUNTY, COLORADO, 7.5 MINUTE QUAD. (TOPOGRAPHIC MAP) PUBLISHED BY THE UNITED STATES DEPARTMENT OF THE INTERIOR, GEOLOGICAL SURVEY. SAID ELEVATION IS MARKED AS BEING 5966 FEET.

### BASIS OF BEARINGS

BASIS OF BEARINGS IS A G.P.S. OBSERVATION.

LINE TABLE		
LINE	DIRECTION	LENGTH
L1	N57°37'58"E	1175.85'



SCALE  
CERTIFICATE

THIS IS TO CERTIFY THAT THE ABOVE PLAT WAS PREPARED FROM FIELD NOTES OF ACTUAL SURVEYS MADE BY ME OR UNDER MY SUPERVISION AND THAT THE SAME ARE TRUE AND CORRECT TO THE BEST OF MY KNOWLEDGE AND BELIEF.

REGISTERED LAND SURVEYOR  
REGISTRATION NO. 17492  
STATE OF COLORADO  
09-04-13

**UINTAH ENGINEERING & LAND SURVEYING**  
85 SOUTH 200 EAST - VERNAL, UTAH 84078  
(435) 789-1017

### LEGEND:

- └─┘ = 90° SYMBOL
- = PROPOSED WELL HEAD.
- ▲ = SECTION CORNERS LOCATED.

PDOP = 2.1

NAD 83 (SURFACE LOCATION)	
LATITUDE	= 39°25'56.74" (39.432428)
LONGITUDE	= 108°04'09.03" (108.069175)
NAD 27 (SURFACE LOCATION)	
LATITUDE	= 39°25'56.82" (39.432450)
LONGITUDE	= 108°04'06.76" (108.068544)

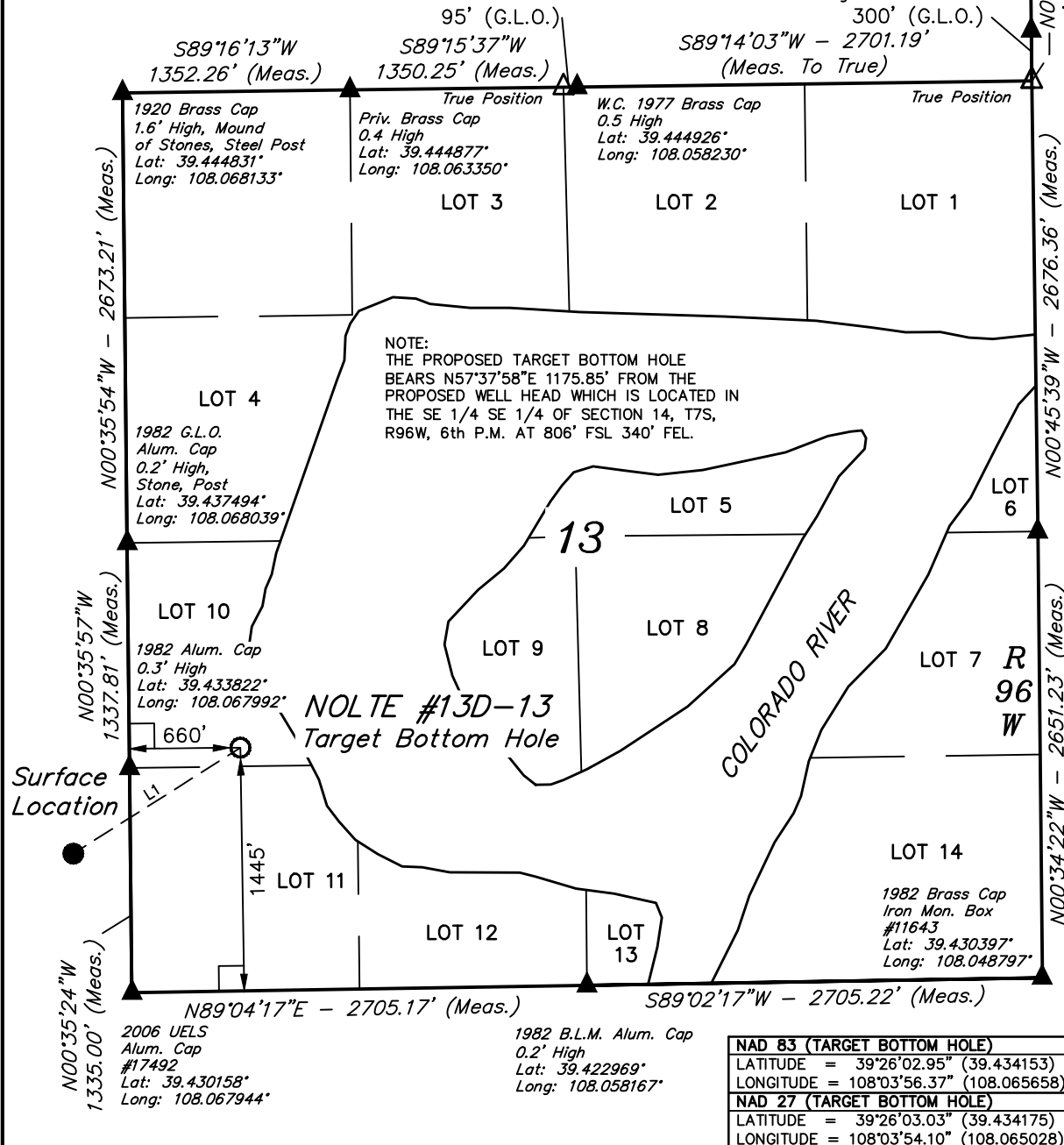
SCALE 1" = 1000'	DATE SURVEYED: 06-13-13	DATE DRAWN: 08-29-13
PARTY B.J. B.B. T.B.	REFERENCES G.L.O. PLAT	
WEATHER WARM	FILE Caerus Piceance LLC	

T7S, R96W, 6th P.M.

E 1/4 Cor. Sec. 12  
1973 Brass Cap  
0.1' High, Steel Post  
Lat: 39.452428°  
Long: 108.049101°

W.C. 1984 Priv. Brass Cap  
Flush w/Ground, #18480  
Lat: 39.445840°  
Long: 108.049016°

LINE TABLE		
LINE	DIRECTION	LENGTH
L1	N57°37'58"E	1175.85'



Caerus Piceance LLC

Well location, NOLTE #13D-13 (TARGET BOTTOM HOLE), located as shown in LOT 10 of Section 13, T7S, R96W, 6th P.M., Garfield County, Colorado.

### BASIS OF ELEVATION

SPOT ELEVATION AT THE NORTHWEST CORNER OF SECTION 30, T5S, R95W, 6th P.M., TAKEN FROM THE FORKED GULCH QUADRANGLE, GARFIELD COUNTY, COLORADO, 7.5 MINUTE QUAD. (TOPOGRAPHIC MAP) PUBLISHED BY THE UNITED STATES DEPARTMENT OF THE INTERIOR, GEOLOGICAL SURVEY. SAID ELEVATION IS MARKED AS BEING 5966 FEET.

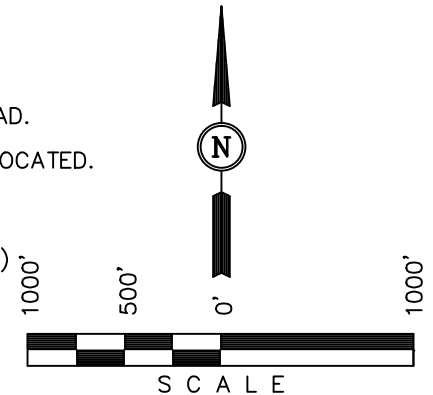
### BASIS OF BEARINGS

BASIS OF BEARINGS IS A G.P.S. OBSERVATION.

### LEGEND:

- └─ = 90° SYMBOL
- = PROPOSED WELL HEAD.
- ▲ = SECTION CORNERS LOCATED.
- △ = SECTION CORNERS RE-ESTABLISHED. (Not Set on Ground.)

B.O.R. Brass Cap  
1.4' High  
Lat: 39.437672°  
Long: 108.048886°



### CERTIFICATE

THIS IS TO CERTIFY THAT THE ABOVE PLAT WAS PREPARED FROM FIELD NOTES OF ACTUAL SURVEYS MADE BY ME OR UNDER MY SUPERVISION AND THAT THE SAME ARE TRUE AND CORRECT TO THE BEST OF MY KNOWLEDGE AND BELIEF.

REGISTERED LAND SURVEYOR  
REGISTRATION NO. 17492  
STATE OF COLORADO  
09-04-13

UINTAH ENGINEERING & LAND SURVEYING  
85 SOUTH 200 EAST - VERNAL, UTAH 84078  
(435) 789-1017

SCALE 1" = 1000'	DATE SURVEYED: 06-13-13	DATE DRAWN: 08-29-13
PARTY B.J. B.B. T.B.	REFERENCES G.L.O. PLAT	
WEATHER WARM	FILE Caerus Piceance LLC	

**T7S, R96W, 6th P.M.**

**14**

**NOTE:**  
THE PROPOSED TARGET BOTTOM HOLE FOR THIS WELL IS LOCATED IN LOT 10 OF SECTION 13, T7S, R96W, 6th P.M. AT 1775' FSL 660' FWL. IT BEARS N45°59'39"E 1370.86' FROM THE PROPOSED WELL HEAD.

**NOLTE #13C-13**  
**Elev. Ungraded Ground = 5090'**




**LEGEND:**

- = 90° SYMBOL
- = PROPOSED WELL HEAD.
- = SECTION CORNERS LOCATED.

**PDOP**

NAD 83 (SURFACE LOCATION)	
LATITUDE	= 39°25'56.81" (39.4
LONGITUDE	= 108°04'08.98" (108.
NAD 27 (SURFACE LOCATION)	
LATITUDE	= 39°25'56.89" (39.4
LONGITUDE	= 108°04'06.71" (108.

SCALE 1" = 1000'	DATE SURVEYED: 06-13-13	DATE DRAWN: 08-29-13
PARTY B.J. B.B. T.B.	REFERENCES G.L.O. PLAT	
WEATHER WARM	FILE Caerus Piceance LLC	

 = 90° SYMBOL  
 = PROPOSED WELL HEAD.  
 = SECTION CORNERS LOCATED.

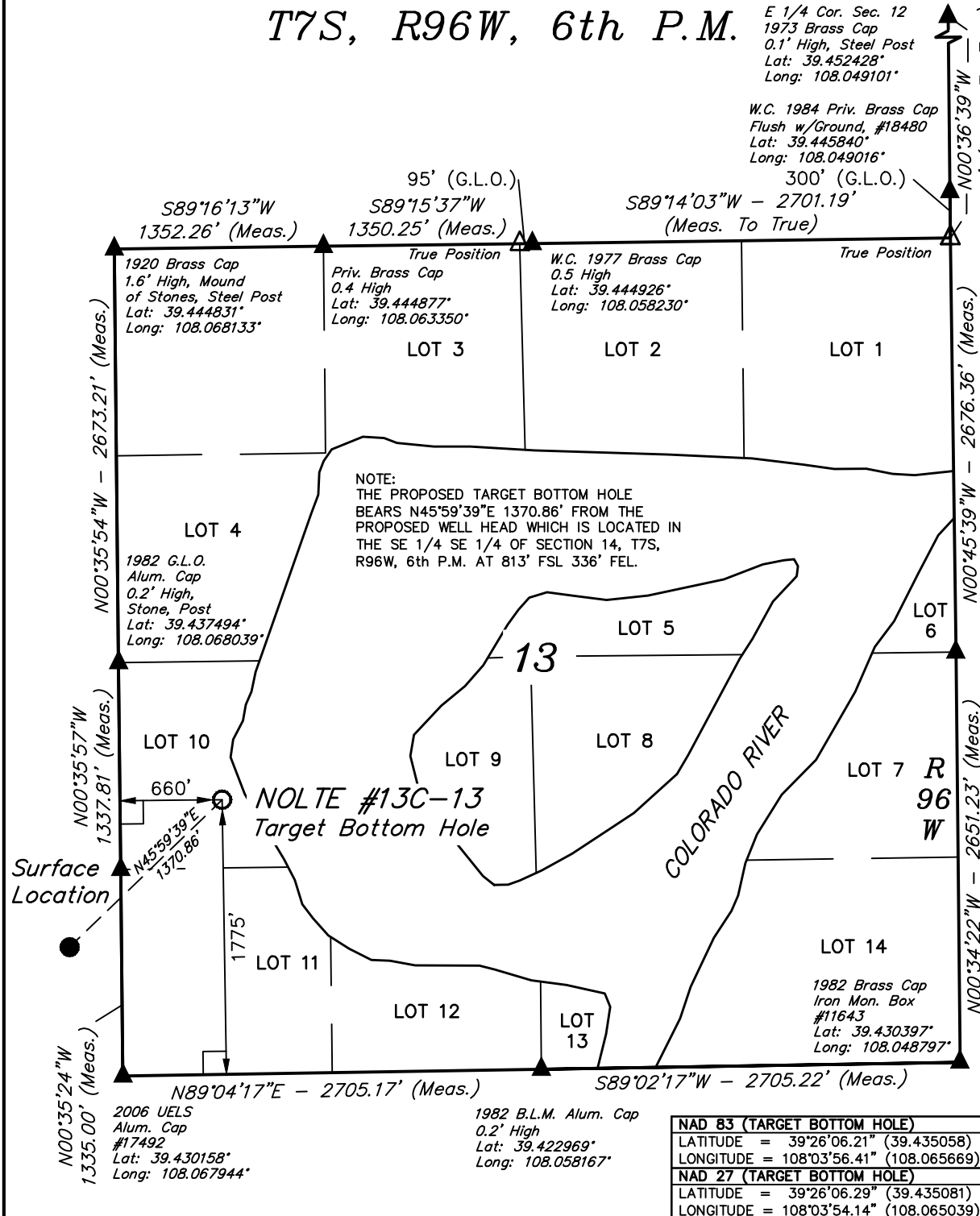
<b>NAD 83 (SURFACE LOCATION)</b>	
LATITUDE	= 39°25'56.81" (39.432447)
LONGITUDE	= 108°04'08.98" (108.069161)
<b>NAD 27 (SURFACE LOCATION)</b>	
LATITUDE	= 39°25'56.89" (39.432469)
LONGITUDE	= 108°04'06.71" (108.068531)



T7S, R96W, 6th P.M.

E 1/4 Cor. Sec. 12  
1973 Brass Cap  
0.1' High, Steel Post  
Lat: 39.452428°  
Long: 108.049101°

W.C. 1984 Priv. Brass Cap  
Flush w/Ground, #18480  
Lat: 39.445840°  
Long: 108.049016°



Caerus Piceance LLC

Well location, NOLTE #13C-13 (TARGET BOTTOM HOLE), located as shown in LOT 10 of Section 13, T7S, R96W, 6th P.M., Garfield County, Colorado.

### BASIS OF ELEVATION

SPOT ELEVATION AT THE NORTHWEST CORNER OF SECTION 30, T5S, R95W, 6th P.M., TAKEN FROM THE FORKED GULCH QUADRANGLE, GARFIELD COUNTY, COLORADO, 7.5 MINUTE QUAD. (TOPOGRAPHIC MAP) PUBLISHED BY THE UNITED STATES DEPARTMENT OF THE INTERIOR, GEOLOGICAL SURVEY. SAID ELEVATION IS MARKED AS BEING 5966 FEET.

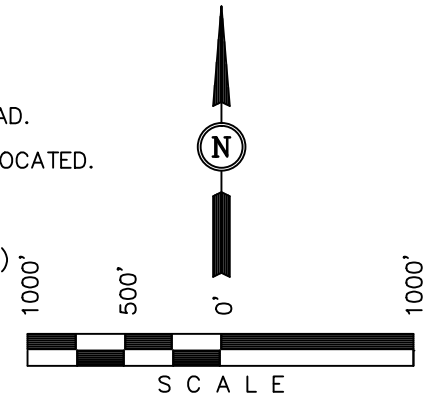
### BASIS OF BEARINGS

BASIS OF BEARINGS IS A G.P.S. OBSERVATION.

### LEGEND:

- └ = 90° SYMBOL
- = PROPOSED WELL HEAD.
- ▲ = SECTION CORNERS LOCATED.
- △ = SECTION CORNERS RE-ESTABLISHED. (Not Set on Ground.)

B.O.R. Brass Cap  
1.4' High  
Lat: 39.437672°  
Long: 108.048886°



### CERTIFICATE

THIS IS TO CERTIFY THAT THE ABOVE PLAT WAS PREPARED FROM FIELD NOTES OF ACTUAL SURVEYS MADE BY ME OR UNDER MY SUPERVISION AND THAT THE SAME ARE TRUE AND CORRECT TO THE BEST OF MY KNOWLEDGE AND BELIEF.

REGISTERED LAND SURVEYOR  
REGISTRATION NO. 17492  
STATE OF COLORADO  
09-04-13

UINTAH ENGINEERING & LAND SURVEYING

85 SOUTH 200 EAST - VERNAL, UTAH 84078

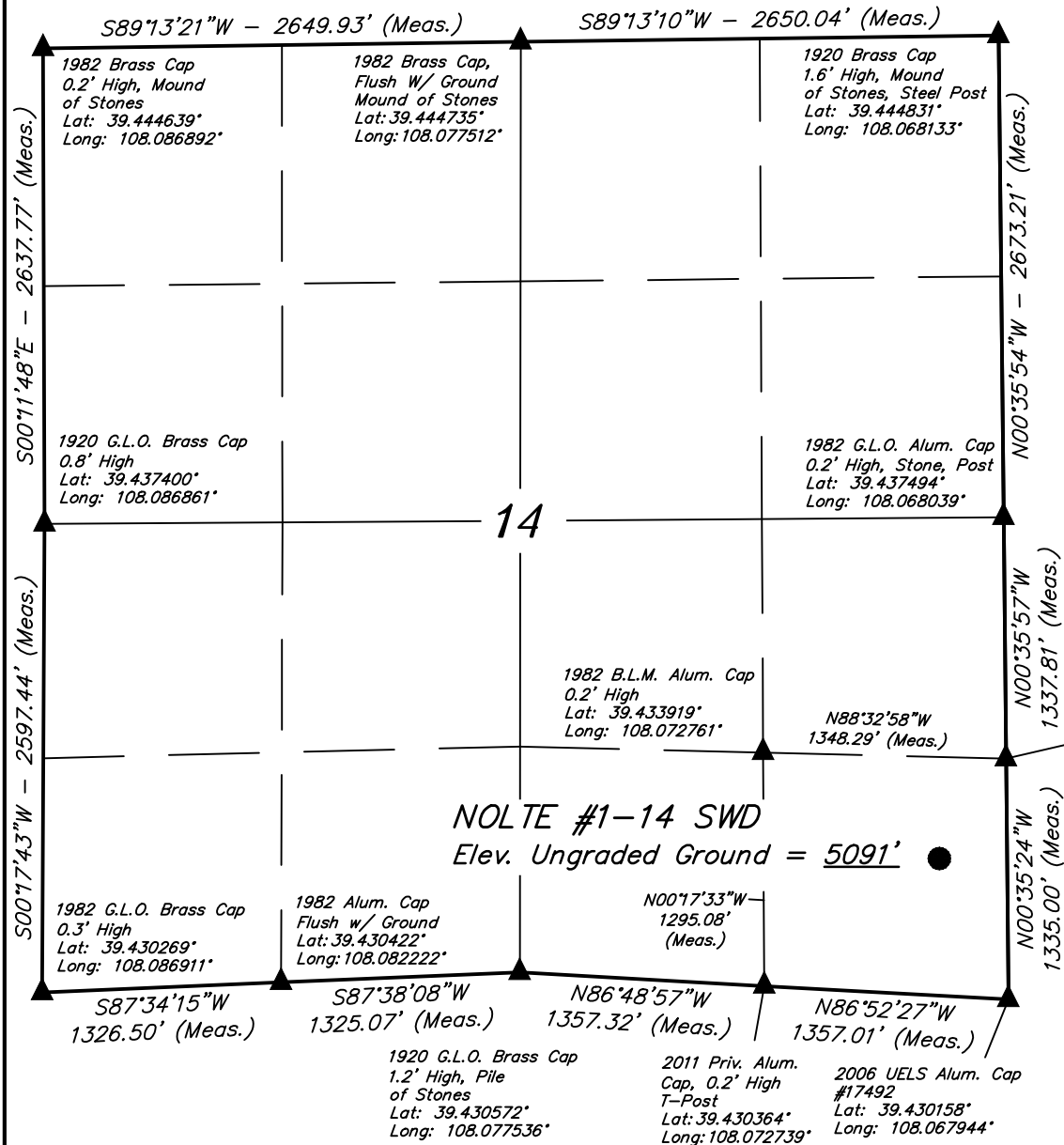
(435) 789-1017

SCALE 1" = 1000'	DATE SURVEYED: 06-13-13	DATE DRAWN: 08-29-13
PARTY B.J. B.B. T.B.	REFERENCES G.L.O. PLAT	
WEATHER WARM	FILE Caerus Piceance LLC	

NAD 83 (TARGET BOTTOM HOLE)	
LATITUDE = 39°26'06.21" (39.435058)	
LONGITUDE = 108°03'56.41" (108.065669)	
NAD 27 (TARGET BOTTOM HOLE)	
LATITUDE = 39°26'06.29" (39.435081)	
LONGITUDE = 108°03'54.14" (108.065039)	



**T7S, R96W, 6th P.M.**



**Caerus Piceance LLC**

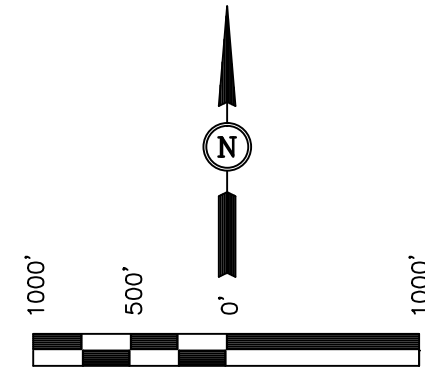
Well location, NOLTE #1-14 SWD, located as shown in the SE 1/4 SE 1/4 of Section 14, T7S, R96W, 6th P.M., Garfield County, Colorado.

### BASIS OF ELEVATION

SPOT ELEVATION AT THE NORTHWEST CORNER OF SECTION 30, T5S, R95W, 6th P.M., TAKEN FROM THE FORKED GULCH QUADRANGLE, GARFIELD COUNTY, COLORADO, 7.5 MINUTE QUAD. (TOPOGRAPHIC MAP) PUBLISHED BY THE UNITED STATES DEPARTMENT OF THE INTERIOR, GEOLOGICAL SURVEY. SAID ELEVATION IS MARKED AS BEING 5966 FEET.

### BASIS OF BEARINGS

BASIS OF BEARINGS IS A G.P.S. OBSERVATION.



THIS IS TO CERTIFY THAT THE ABOVE PLAT WAS PREPARED FROM FIELD NOTES OF ACTUAL SURVEYS MADE BY ME OR UNDER MY SUPERVISION AND THAT THE SAME ARE TRUE AND CORRECT TO THE BEST OF MY KNOWLEDGE AND BELIEF.

REGISTERED LAND SURVEYOR  
REGISTRATION NO. 17492  
STATE OF COLORADO 09-04-13

**UINTAH ENGINEERING & LAND SURVEYING**  
85 SOUTH 200 EAST - VERNAL, UTAH 84078  
(435) 789-1017

### LEGEND:

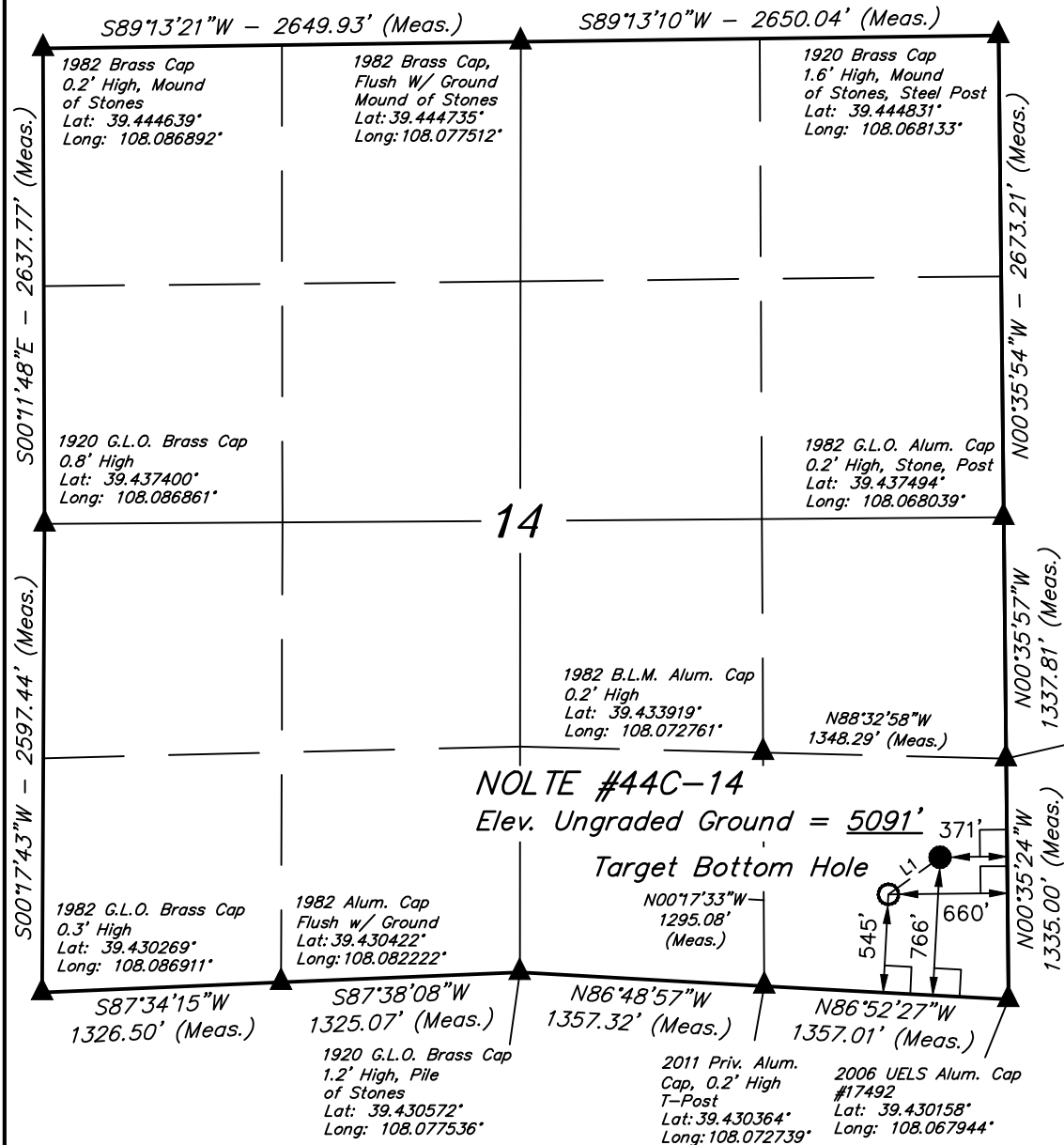
- └─┘ = 90° SYMBOL
- = PROPOSED WELL HEAD.
- ▲ = SECTION CORNERS LOCATED.

PDOP = 2.1

NAD 83 (SURFACE LOCATION)	
LATITUDE	= 39°25'56.29" (39.432303)
LONGITUDE	= 108°04'09.47" (108.069297)
NAD 27 (SURFACE LOCATION)	
LATITUDE	= 39°25'56.37" (39.432325)
LONGITUDE	= 108°04'07.20" (108.068667)

SCALE 1" = 1000'	DATE SURVEYED: 06-13-13	DATE DRAWN: 08-29-13
PARTY B.J. B.B. T.B.	REFERENCES G.L.O. PLAT	
WEATHER WARM	FILE Caerus Piceance LLC	

T7S, R96W, 6th P.M.



Caerus Piceance LLC

Well location, NOLTE #44C-14, located as shown in the SE 1/4 SE 1/4 of Section 14, T7S, R96W, 6th P.M., Garfield County, Colorado.

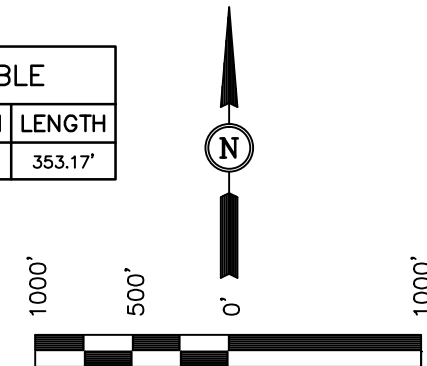
### BASIS OF ELEVATION

SPOT ELEVATION AT THE NORTHWEST CORNER OF SECTION 30, T5S, R95W, 6th P.M., TAKEN FROM THE FORKED GULCH QUADRANGLE, GARFIELD COUNTY, COLORADO, 7.5 MINUTE QUAD. (TOPOGRAPHIC MAP) PUBLISHED BY THE UNITED STATES DEPARTMENT OF THE INTERIOR, GEOLOGICAL SURVEY. SAID ELEVATION IS MARKED AS BEING 5966 FEET.

### BASIS OF BEARINGS

BASIS OF BEARINGS IS A G.P.S. OBSERVATION.

LINE TABLE		
LINE	DIRECTION	LENGTH
L1	S54°18'51"W	353.17'



SCALE  
CERTIFICATE

THIS IS TO CERTIFY THAT THE ABOVE PLAT WAS PREPARED FROM FIELD NOTES OF ACTUAL SURVEYS MADE BY ME OR UNDER MY SUPERVISION AND THAT THE SAME ARE TRUE AND CORRECT TO THE BEST OF MY KNOWLEDGE AND BELIEF.

REGISTERED LAND SURVEYOR  
REGISTRATION NO. 17492  
STATE OF COLORADO 09-04-13

UINTAH ENGINEERING & LAND SURVEYING  
85 SOUTH 200 EAST - VERNAL, UTAH 84078  
(435) 789-1017

### LEGEND:

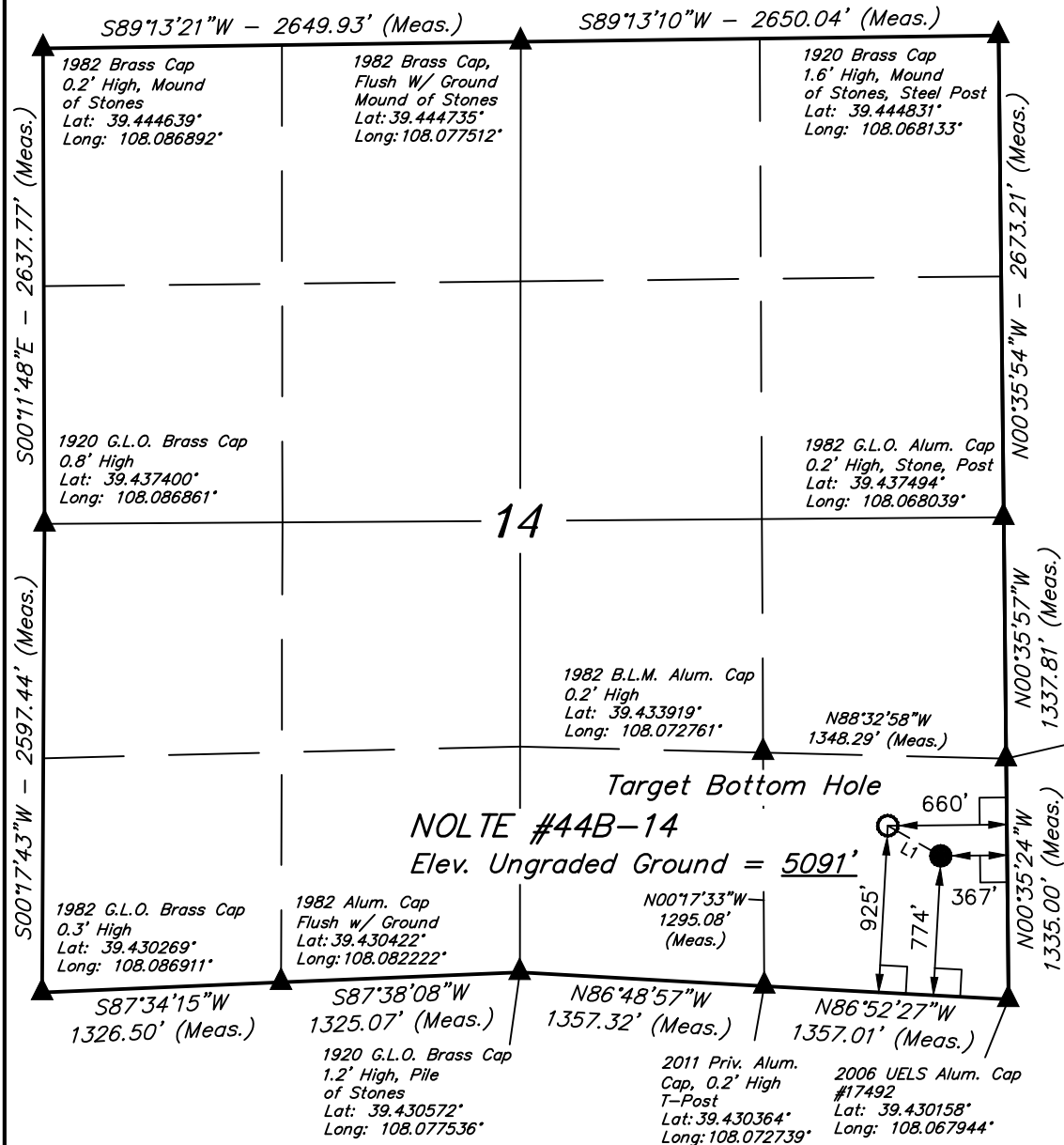
- └─┘ = 90° SYMBOL
- = PROPOSED WELL HEAD.
- ▲ = SECTION CORNERS LOCATED.

PDOP = 2.1

NAD 83 (TARGET BOTTOM HOLE)	NAD 83 (SURFACE LOCATION)
LATITUDE = 39°25'54.33" (39.431758)	LATITUDE = 39°25'56.36" (39.432322)
LONGITUDE = 108°04'13.08" (108.070300)	LONGITUDE = 108°04'09.42" (108.069283)
NAD 27 (TARGET BOTTOM HOLE)	NAD 27 (SURFACE LOCATION)
LATITUDE = 39°25'54.41" (39.431781)	LATITUDE = 39°25'56.44" (39.432344)
LONGITUDE = 108°04'10.81" (108.069669)	LONGITUDE = 108°04'07.15" (108.068653)

SCALE 1" = 1000'	DATE SURVEYED: 06-13-13	DATE DRAWN: 08-29-13
PARTY B.J. B.B. T.B.	REFERENCES G.L.O. PLAT	
WEATHER WARM	FILE Caerus Piceance LLC	

T7S, R96W, 6th P.M.



Caerus Piceance LLC

Well location, NOLTE #44B-14, located as shown in the SE 1/4 SE 1/4 of Section 14, T7S, R96W, 6th P.M., Garfield County, Colorado.

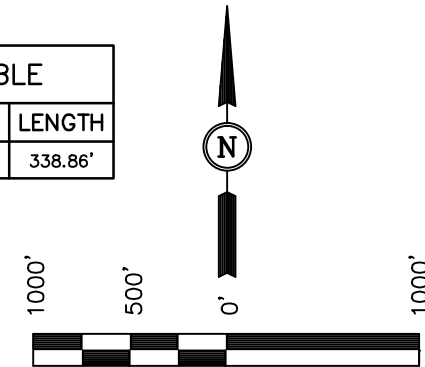
### BASIS OF ELEVATION

SPOT ELEVATION AT THE NORTHWEST CORNER OF SECTION 30, T5S, R95W, 6th P.M., TAKEN FROM THE FORKED GULCH QUADRANGLE, GARFIELD COUNTY, COLORADO, 7.5 MINUTE QUAD. (TOPOGRAPHIC MAP) PUBLISHED BY THE UNITED STATES DEPARTMENT OF THE INTERIOR, GEOLOGICAL SURVEY. SAID ELEVATION IS MARKED AS BEING 5966 FEET.

### BASIS OF BEARINGS

BASIS OF BEARINGS IS A G.P.S. OBSERVATION.

LINE TABLE		
LINE	DIRECTION	LENGTH
L1	N60°20'38"W	338.86'



SCALE  
CERTIFICATE

THIS IS TO CERTIFY THAT THE ABOVE PLAT WAS PREPARED FROM FIELD NOTES OF ACTUAL SURVEYS MADE BY ME OR UNDER MY SUPERVISION AND THAT THE SAME ARE TRUE AND CORRECT TO THE BEST OF MY KNOWLEDGE AND BELIEF.

REGISTERED LAND SURVEYOR  
REGISTRATION NO. 17492  
STATE OF COLORADO  
09-04-13

UINTAH ENGINEERING & LAND SURVEYING  
85 SOUTH 200 EAST - VERNAL, UTAH 84078  
(435) 789-1017

### LEGEND:

- └ = 90° SYMBOL
- = PROPOSED WELL HEAD.
- ▲ = SECTION CORNERS LOCATED.

PDOP = 2.1

NAD 83 (TARGET BOTTOM HOLE)	NAD 83 (SURFACE LOCATION)
LATITUDE = 39°25'58.09" (39.432803)	LATITUDE = 39°25'56.43" (39.432342)
LONGITUDE = 108°04'13.13" (108.070314)	LONGITUDE = 108°04'09.38" (108.069272)
NAD 27 (TARGET BOTTOM HOLE)	NAD 27 (SURFACE LOCATION)
LATITUDE = 39°25'58.17" (39.432825)	LATITUDE = 39°25'56.51" (39.432364)
LONGITUDE = 108°04'10.86" (108.069683)	LONGITUDE = 108°04'07.10" (108.068639)

SCALE 1" = 1000'	DATE SURVEYED: 06-13-13	DATE DRAWN: 08-29-13
PARTY B.J. B.B. T.B.	REFERENCES G.L.O. PLAT	
WEATHER WARM	FILE Caerus Piceance LLC	

**T7S, R96W, 6th P.M.**

**Section 14**

**Top Boundary:**  
 S89°13'21"W - 2649.93' (Meas.)  
 S89°13'10"W - 2650.04' (Meas.)

**Right Boundary:**  
 N00°35'54"W - 2673.21' (Meas.)  
 N00°35'57"W - 1337.81' (Meas.)  
 N00°35'24"W - 1335.00' (Meas.)

**Left Boundary:**  
 S00°11'48"E - 2637.77' (Meas.)  
 S00°17'43"W - 2597.44' (Meas.)

**Bottom Boundary:**  
 S87°34'15"W - 1326.50' (Meas.)  
 S87°38'08"W - 1325.07' (Meas.)  
 N86°48'57"W - 1357.32' (Meas.)  
 N86°52'27"W - 1357.01' (Meas.)

**Monuments and Measurements:**

- 1982 Brass Cap  
0.2' High, Mound of Stones  
Lat: 39.444639°  
Long: 108.086892°
- 1982 Brass Cap, Flush W/ Ground Mound of Stones  
Lat: 39.444735°  
Long: 108.077512°
- 1920 Brass Cap  
1.6' High, Mound of Stones, Steel Post  
Lat: 39.444831°  
Long: 108.068133°
- 1920 G.L.O. Brass Cap  
0.8' High  
Lat: 39.437400°  
Long: 108.086861°
- 1982 G.L.O. Alum. Cap  
0.2' High, Stone, Post  
Lat: 39.437494°  
Long: 108.068039°
- 1982 B.L.M. Alum. Cap  
0.2' High  
Lat: 39.433919°  
Long: 108.072761°
- 1982 G.L.O. Brass Cap  
0.3' High  
Lat: 39.430269°  
Long: 108.086911°
- 1982 Alum. Cap  
Flush w/ Ground  
Lat: 39.430422°  
Long: 108.082222°
- 1920 G.L.O. Brass Cap  
1.2' High, Pile of Stones  
Lat: 39.430572°  
Long: 108.077536°
- 2011 Priv. Alum. Cap, 0.2' High T-Post  
Lat: 39.430364°  
Long: 108.072739°
- 2006 UELS Alum. Cap #17492  
Lat: 39.430158°  
Long: 108.067944°

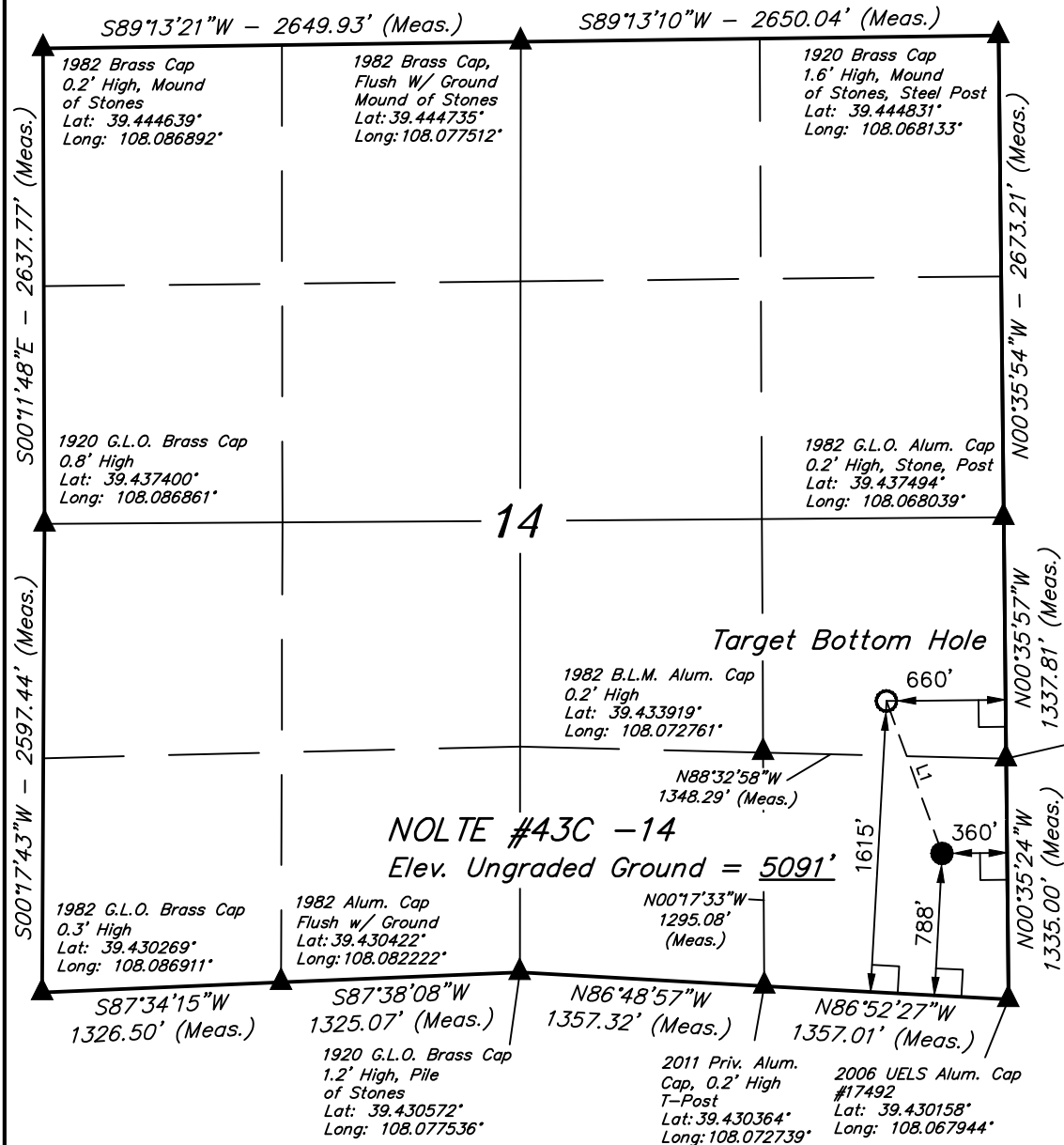
**Target Bottom Hole**  
 Elev. Ungraded Ground = 5091'  
 Depth: 1300'  
 Distance from corner: 364'  
 Distance from corner: 781'

**Other Measurements:**  
 N88°32'58"W 1348.29' (Meas.) 660'  
 N00°17'33"W 1295.08' (Meas.)

<b>NAD 83 (TARGET BOTTOM HOLE)</b>	<b>NAD 83 (SURFACE LOCATION)</b>
<b>LATITUDE = 39°26'01.80" (39.433833)</b>	<b>LATITUDE = 39°25'56.50" (39.432361)</b>
<b>LONGITUDE = 108°04'13.18" (108.070328)</b>	<b>LONGITUDE = 108°04'09.33" (108.069258)</b>
<b>NAD 27 (TARGET BOTTOM HOLE)</b>	<b>NAD 27 (SURFACE LOCATION)</b>
<b>LATITUDE = 39°26'01.88" (39.433856)</b>	<b>LATITUDE = 39°25'56.58" (39.432383)</b>
<b>LONGITUDE = 108°04'10.90" (108.069694)</b>	<b>LONGITUDE = 108°04'07.06" (108.068628)</b>

SCALE 1" = 1000'	DATE SURVEYED: 06-13-13	DATE DRAWN: 08-29-13
PARTY B.J. B.B. T.B.	REFERENCES G.L.O. PLAT	
WEATHER WARM	FILE Caerus Piceance LLC	

T7S, R96W, 6th P.M.



Caerus Piceance LLC

Well location, NOLTE #43C-14, located as shown in the SE 1/4 SE 1/4 of Section 14, T7S, R96W, 6th P.M., Garfield County, Colorado.

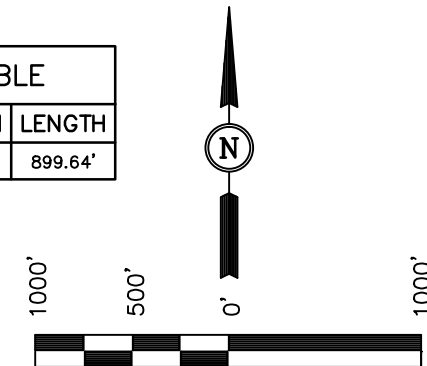
### BASIS OF ELEVATION

SPOT ELEVATION AT THE NORTHWEST CORNER OF SECTION 30, T5S, R95W, 6th P.M., TAKEN FROM THE FORKED GULCH QUADRANGLE, GARFIELD COUNTY, COLORADO, 7.5 MINUTE QUAD. (TOPOGRAPHIC MAP) PUBLISHED BY THE UNITED STATES DEPARTMENT OF THE INTERIOR, GEOLOGICAL SURVEY. SAID ELEVATION IS MARKED AS BEING 5966 FEET.

### BASIS OF BEARINGS

BASIS OF BEARINGS IS A G.P.S. OBSERVATION.

LINE TABLE		
LINE	DIRECTION	LENGTH
L1	N20°05'27"W	899.64'



SCALE  
CERTIFICATE

THIS IS TO CERTIFY THAT THE ABOVE PLAT WAS PREPARED FROM FIELD NOTES OF ACTUAL SURVEYS MADE BY ME OR UNDER MY SUPERVISION AND THAT THE SAME ARE TRUE AND CORRECT TO THE BEST OF MY KNOWLEDGE AND BELIEF.

REGISTERED LAND SURVEYOR  
REGISTRATION NO. 17492  
STATE OF COLORADO  
09-04-13

**UINTAH ENGINEERING & LAND SURVEYING**  
85 SOUTH 200 EAST - VERNAL, UTAH 84078  
(435) 789-1017

### LEGEND:

- └─┘ = 90° SYMBOL
- = PROPOSED WELL HEAD.
- ▲ = SECTION CORNERS LOCATED.

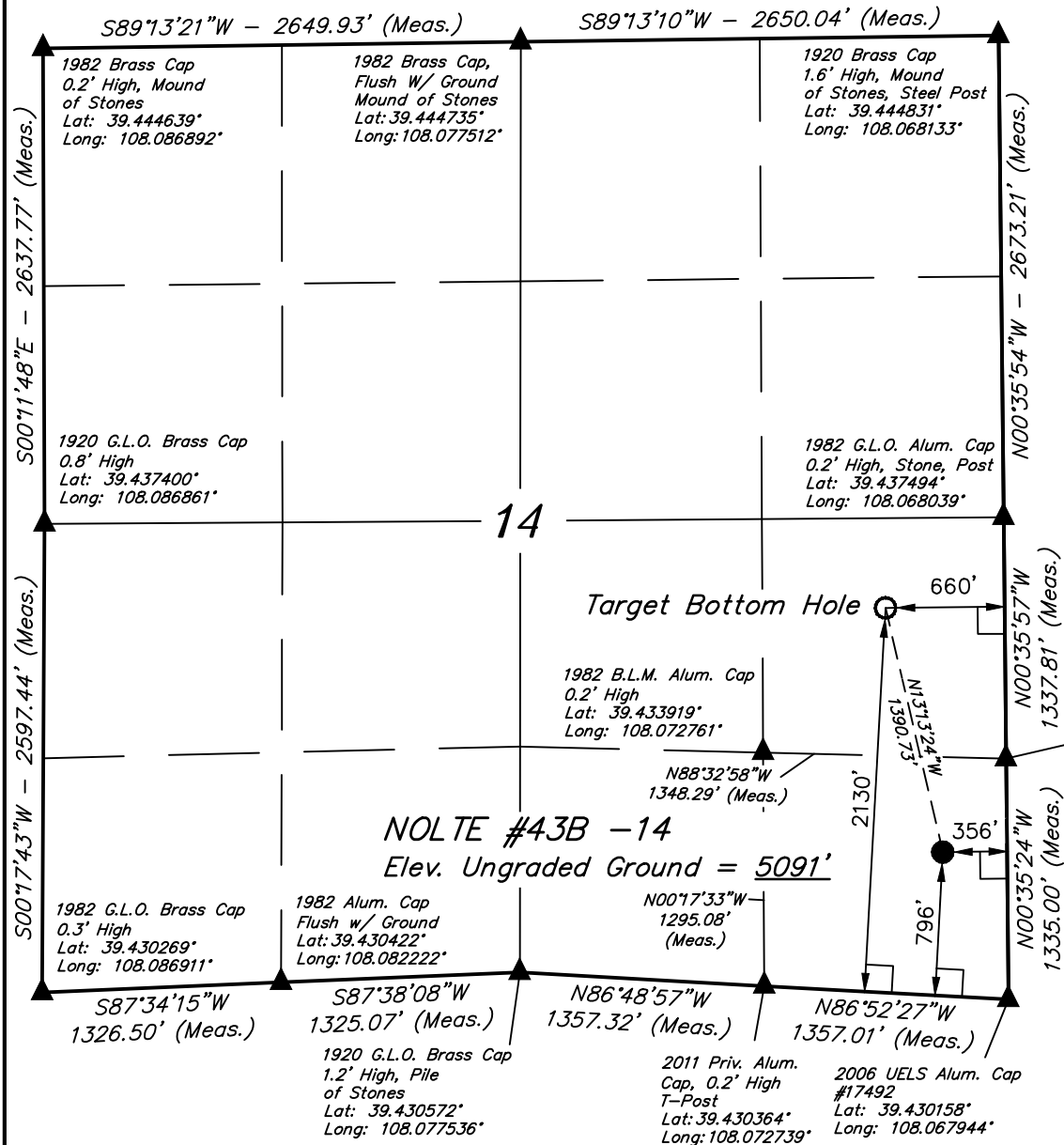
PDOP = 2.1

NAD 83 (TARGET BOTTOM HOLE)	NAD 83 (SURFACE LOCATION)
LATITUDE = 39°26'04.92" (39.434700)	LATITUDE = 39°25'56.57" (39.432381)
LONGITUDE = 108°04'13.22" (108.070339)	LONGITUDE = 108°04'09.28" (108.069244)
NAD 27 (TARGET BOTTOM HOLE)	NAD 27 (SURFACE LOCATION)
LATITUDE = 39°26'05.00" (39.434722)	LATITUDE = 39°25'56.65" (39.432403)
LONGITUDE = 108°04'10.94" (108.069706)	LONGITUDE = 108°04'07.01" (108.068614)

SCALE 1" = 1000'	DATE SURVEYED: 06-13-13	DATE DRAWN: 08-29-13
PARTY B.J. B.B. T.B.	REFERENCES G.L.O. PLAT	
WEATHER WARM	FILE Caerus Piceance LLC	



T7S, R96W, 6th P.M.



Caerus Piceance LLC

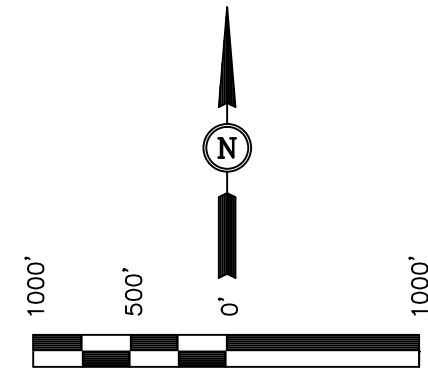
Well location, NOLTE #43B-14, located as shown in the SE 1/4 SE 1/4 of Section 14, T7S, R96W, 6th P.M., Garfield County, Colorado.

### BASIS OF ELEVATION

SPOT ELEVATION AT THE NORTHWEST CORNER OF SECTION 30, T5S, R95W, 6th P.M., TAKEN FROM THE FORKED GULCH QUADRANGLE, GARFIELD COUNTY, COLORADO, 7.5 MINUTE QUAD. (TOPOGRAPHIC MAP) PUBLISHED BY THE UNITED STATES DEPARTMENT OF THE INTERIOR, GEOLOGICAL SURVEY. SAID ELEVATION IS MARKED AS BEING 5966 FEET.

### BASIS OF BEARINGS

BASIS OF BEARINGS IS A G.P.S. OBSERVATION.



SCALE  
CERTIFICATE

THIS IS TO CERTIFY THAT THE ABOVE PLAT WAS PREPARED FROM FIELD NOTES OF ACTUAL SURVEYS MADE BY ME OR UNDER MY SUPERVISION AND THAT THE SAME ARE TRUE AND CORRECT TO THE BEST OF MY KNOWLEDGE AND BELIEF.

REGISTERED LAND SURVEYOR  
REGISTRATION NO. 17492  
STATE OF COLORADO  
09-04-13

**UINTAH ENGINEERING & LAND SURVEYING**  
85 SOUTH 200 EAST - VERNAL, UTAH 84078  
(435) 789-1017

### LEGEND:

- └─┘ = 90° SYMBOL
- = PROPOSED WELL HEAD.
- ▲ = SECTION CORNERS LOCATED.

PDOP = 2.1

NAD 83 (TARGET BOTTOM HOLE)	NAD 83 (SURFACE LOCATION)
LATITUDE = 39°26'10.02" (39.436117)	LATITUDE = 39°25'56.64" (39.432400)
LONGITUDE = 108°04'13.28" (108.070356)	LONGITUDE = 108°04'09.24" (108.069233)
NAD 27 (TARGET BOTTOM HOLE)	NAD 27 (SURFACE LOCATION)
LATITUDE = 39°26'10.10" (39.436139)	LATITUDE = 39°25'56.72" (39.432422)
LONGITUDE = 108°04'11.01" (108.069725)	LONGITUDE = 108°04'06.96" (108.068600)

SCALE 1" = 1000'	DATE SURVEYED: 06-13-13	DATE DRAWN: 08-29-13
PARTY B.J. B.B. T.B.	REFERENCES G.L.O. PLAT	
WEATHER WARM	FILE Caerus Piceance LLC	



Caerus Piceance LLC

## BASIS OF ELEVATION

## BASIS OF BEARINGS

THIS IS TO CERTIFY THAT THE ABOVE PLAT WAS PREPARED FROM  
FIELD NOTES OF ACTUAL SURVEYS MADE BY ME OR UNDER MY  
SUPERVISION AND THAT THE SAME ARE TRUE AND CORRECT TO THE  
BEST OF MY KNOWLEDGE AND BELIEF.

REGISTERED LAND SURVEYOR  
REGISTRATION NO. 17492  
STATE OF COLORADO  
09-04-13

85 SOUTH 200 EAST - VERNAL, UTAH 84078

SCALE 1" = 1000'	DATE SURVEYED: 06-13-13	DATE DRAWN: 08-29-13
PARTY B.J. B.B. T.B.	REFERENCES G.L.O. PLAT	
WEATHER WARM	FILE Caerus Piceance LLC	



● = PROPOSED WELL HEAD.

PDOP = 2.1

<b>NAD 83 (TARGET BOTTOM HOLE)</b>	<b>NAD 83 (SURFACE LOCATION)</b>
LATITUDE = 39°26'13.14" (39.436983)	LATITUDE = 39°25'56.71" (39.432419)
LONGITUDE = 108°04'13.32" (108.070367)	LONGITUDE = 108°04'09.19" (108.069219)
<b>NAD 27 (TARGET BOTTOM HOLE)</b>	<b>NAD 27 (SURFACE LOCATION)</b>
LATITUDE = 39°26'13.22" (39.437006)	LATITUDE = 39°25'56.79" (39.432442)
LONGITUDE = 108°04'11.05" (108.069736)	LONGITUDE = 108°04'06.92" (108.068589)

Caerus Piceance LLC

## BASIS OF ELEVATION

## BASIS OF BEARINGS

LINE TABLE		
LINE	DIRECTION	LENGTH
L1	N37°45'30"E	1625.15



A horizontal scale bar with alternating black and white segments. It is labeled with '0', '500'', and '1000'' at the bottom.

THIS IS TO CERTIFY THAT THE ABOVE PLAT WAS PREPARED FROM FIELD NOTES OF ACTUAL SURVEYS MADE BY ME OR UNDER MY SUPERVISION AND THAT THE SAME ARE TRUE AND CORRECT TO THE BEST OF MY KNOWLEDGE AND BELIEF.

REGISTERED LAND SURVEYOR  
REGISTRATION NO. 17492  
STATE OF COLORADO  
09-04-13

85 SOUTH 200 EAST - VERNAL, UTAH 84078

SCALE 1" = 1000'	DATE SURVEYED: 06-13-13	DATE DRAWN: 08-29-13
PARTY B.J. B.B. T.B.	REFERENCES G.L.O. PLAT	
WEATHER WARM	FILE Caerus Piceance LLC	

     = 90° SYMBOL

● = PROPOSED WELL HEAD.

▲ = SECTION CORNERS LOCATED.

PDOP = 2.1

<b>NAD 83 (SURFACE LOCATION)</b>	
LATITUDE	= 39°25'56.78" (39.432439)
LONGITUDE	= 108°04'09.14" (108.069206)
<b>NAD 27 (SURFACE LOCATION)</b>	
LATITUDE	= 39°25'56.86" (39.432461)
LONGITUDE	= 108°04'06.87" (108.068575)

T7S, R96W, 6th P.M.

E 1/4 Cor. Sec. 12  
1973 Brass Cap  
0.1' High, Steel Post  
Lat: 39.452428°  
Long: 108.049101°

W.C. 1984 Priv. Brass Cap  
Flush w/Ground, #18480  
Lat: 39.445840°  
Long: 108.049016°

Caerus Piceance LLC

Well location, NOLTE #13B-13 (TARGET BOTTOM HOLE), located as shown in LOT 10 of Section 13, T7S, R96W, 6th P.M., Garfield County, Colorado.

### BASIS OF ELEVATION

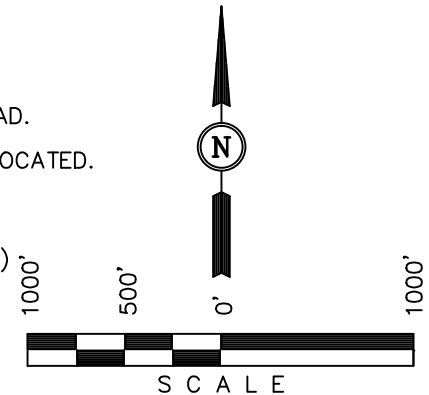
SPOT ELEVATION AT THE NORTHWEST CORNER OF SECTION 30, T5S, R95W, 6th P.M., TAKEN FROM THE FORKED GULCH QUADRANGLE, GARFIELD COUNTY, COLORADO, 7.5 MINUTE QUAD. (TOPOGRAPHIC MAP) PUBLISHED BY THE UNITED STATES DEPARTMENT OF THE INTERIOR, GEOLOGICAL SURVEY. SAID ELEVATION IS MARKED AS BEING 5966 FEET.

### BASIS OF BEARINGS

BASIS OF BEARINGS IS A G.P.S. OBSERVATION.

### LEGEND:

- └ = 90° SYMBOL
- = PROPOSED WELL HEAD.
- ▲ = SECTION CORNERS LOCATED.
- △ = SECTION CORNERS RE-ESTABLISHED. (Not Set on Ground.)



### CERTIFICATE

THIS IS TO CERTIFY THAT THE ABOVE PLAT WAS PREPARED FROM FIELD NOTES OF ACTUAL SURVEYS MADE BY ME OR UNDER MY SUPERVISION AND THAT THE SAME ARE TRUE AND CORRECT TO THE BEST OF MY KNOWLEDGE AND BELIEF.

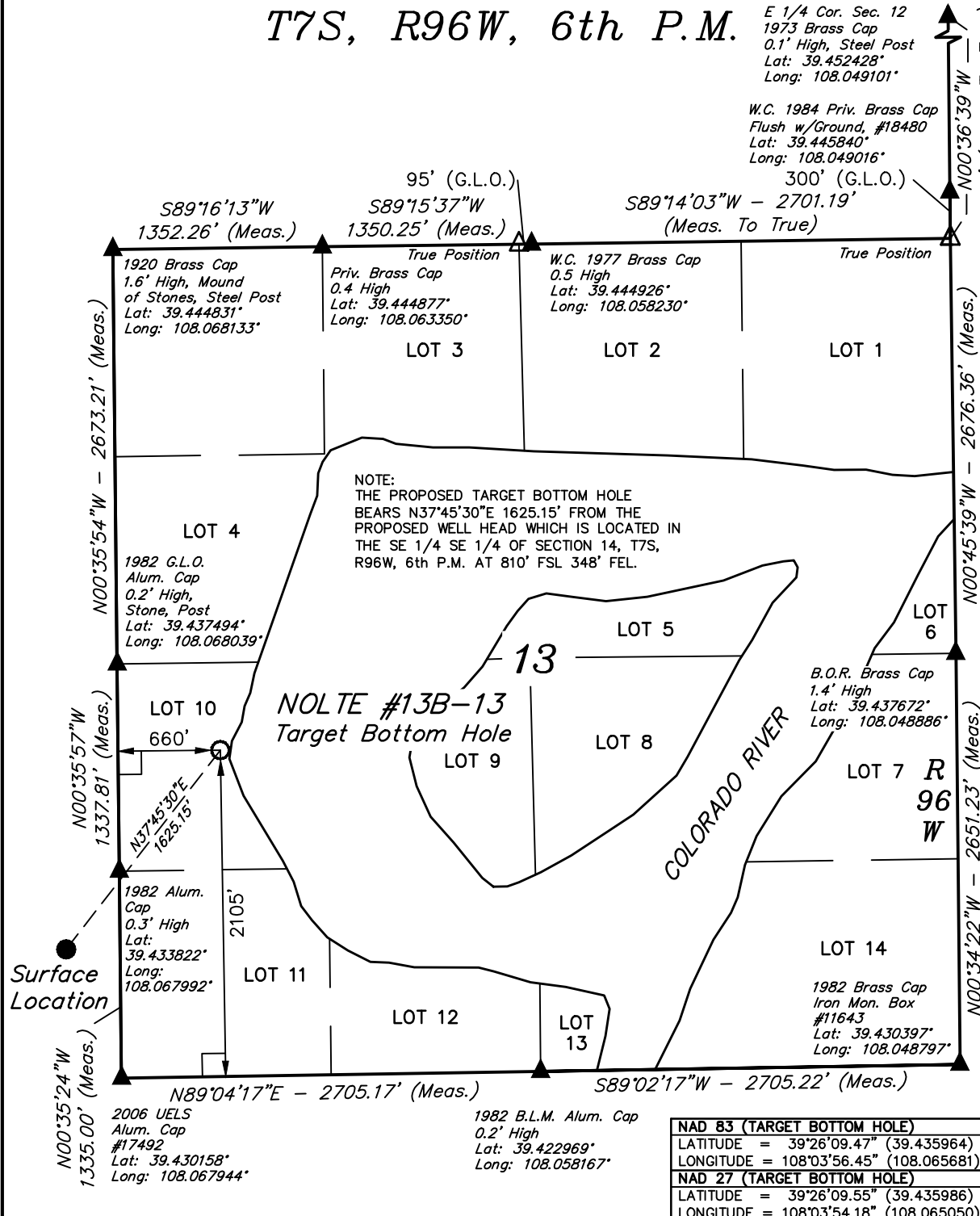
REGISTERED LAND SURVEYOR  
REGISTRATION NO. 17492  
STATE OF COLORADO 09-04-13

UINTAH ENGINEERING & LAND SURVEYING

85 SOUTH 200 EAST - VERNAL, UTAH 84078

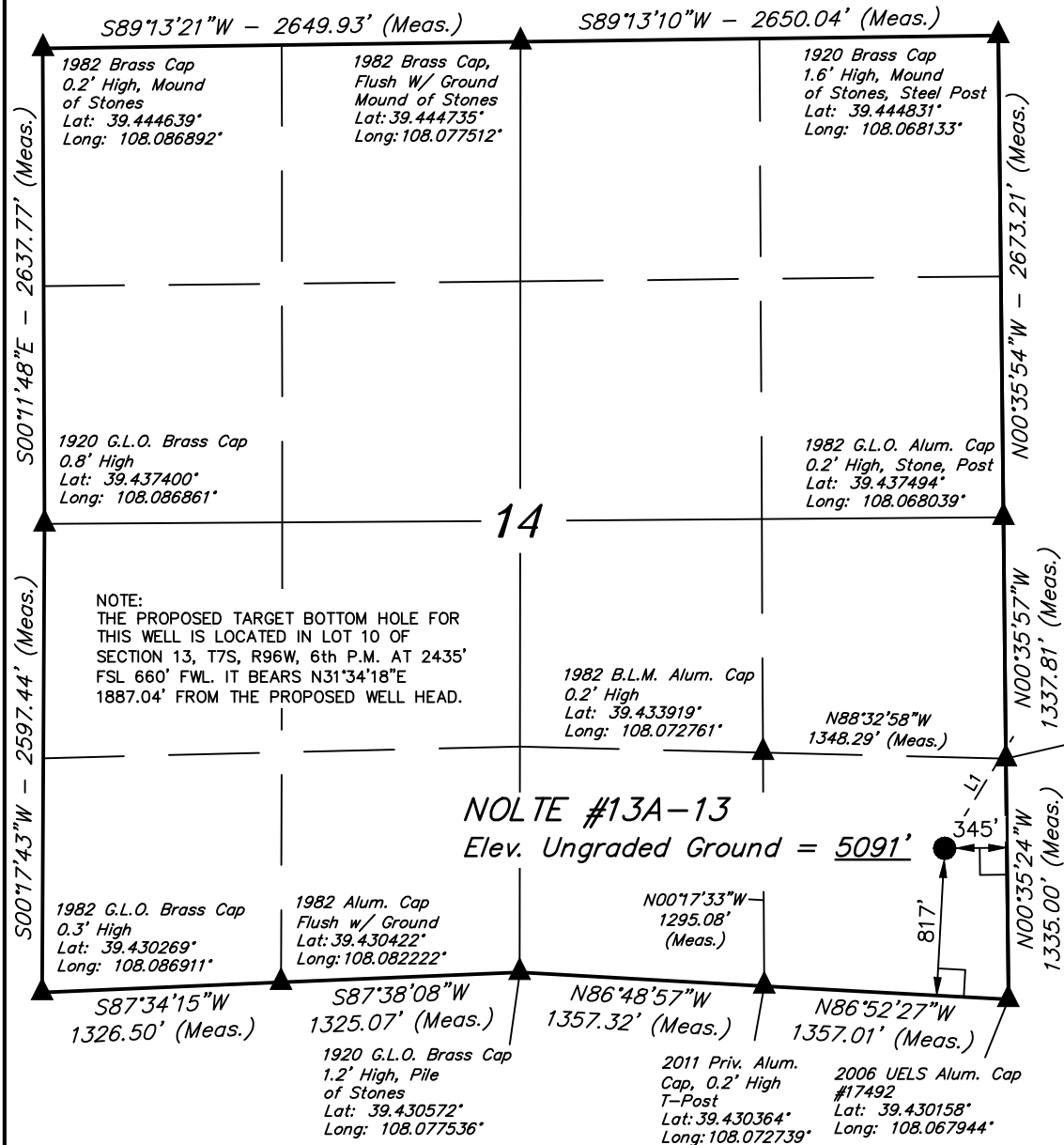
(435) 789-1017

SCALE 1" = 1000'	DATE SURVEYED: 06-13-13	DATE DRAWN: 08-29-13
PARTY B.J. B.B. T.B.	REFERENCES G.L.O. PLAT	
WEATHER WARM	FILE Caerus Piceance LLC	



<b>NAD 83 (TARGET BOTTOM HOLE)</b>
LATITUDE = 39°26'09.47" (39.435964)
LONGITUDE = 108°03'56.45" (108.065681)
<b>NAD 27 (TARGET BOTTOM HOLE)</b>
LATITUDE = 39°26'09.55" (39.435986)
LONGITUDE = 108°03'54.18" (108.065050)

T7S, R96W, 6th P.M.



# LEGEND:

- └─┘ = 90° SYMBOL
- = PROPOSED WELL HEAD.
- ▲ = SECTION CORNERS LOCATED.

PDOP = 2.1

NAD 83 (SURFACE LOCATION)	
LATITUDE	= 39°25'56.85" (39.432458)
LONGITUDE	= 108°04'09.09" (108.069192)
NAD 27 (SURFACE LOCATION)	
LATITUDE	= 39°25'56.93" (39.432481)
LONGITUDE	= 108°04'06.82" (108.068561)

## Caerus Piceance LLC

Well location, NOLTE #13A-13 (SURFACE LOCATION), located as shown in the SE 1/4 SE 1/4 of Section 14, T7S, R96W, 6th P.M., Garfield County, Colorado.

## BASIS OF ELEVATION

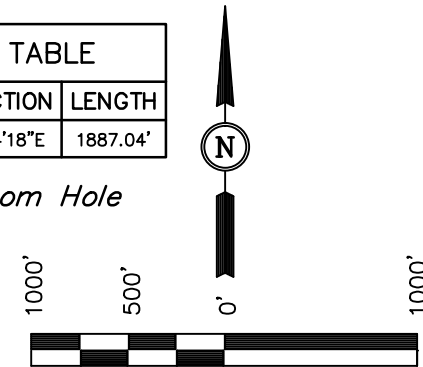
SPOT ELEVATION AT THE NORTHWEST CORNER OF SECTION 30, T5S, R95W, 6th P.M., TAKEN FROM THE FORKED GULCH QUADRANGLE, GARFIELD COUNTY, COLORADO, 7.5 MINUTE QUAD. (TOPOGRAPHIC MAP) PUBLISHED BY THE UNITED STATES DEPARTMENT OF THE INTERIOR, GEOLOGICAL SURVEY. SAID ELEVATION IS MARKED AS BEING 5966 FEET.

## BASIS OF BEARINGS

BASIS OF BEARINGS IS A G.P.S. OBSERVATION.

LINE TABLE		
LINE	DIRECTION	LENGTH
L1	N31°34'18"E	1887.04'

Target Bottom Hole



SCALE  
CERTIFICATE

THIS IS TO CERTIFY THAT THE ABOVE PLAT WAS PREPARED FROM FIELD NOTES OF ACTUAL SURVEYS MADE BY ME OR UNDER MY SUPERVISION AND THAT THE SAME ARE TRUE AND CORRECT TO THE BEST OF MY KNOWLEDGE AND BELIEF.

REGISTERED LAND SURVEYOR  
REGISTRATION NO. 17492  
STATE OF COLORADO  
09-04-13

UINTAH ENGINEERING & LAND SURVEYING  
85 SOUTH 200 EAST - VERNAL, UTAH 84078  
(435) 789-1017

SCALE 1" = 1000'	DATE SURVEYED: 06-13-13	DATE DRAWN: 08-29-13
PARTY B.J. B.B. T.B.	REFERENCES G.L.O. PLAT	
WEATHER WARM	FILE Caerus Piceance LLC	

T7S, R96W, 6th P.M.

E 1/4 Cor. Sec. 12  
1973 Brass Cap  
0.1' High, Steel Post  
Lat: 39.452428°  
Long: 108.049101°

W.C. 1984 Priv. Brass Cap  
Flush w/Ground, #18480  
Lat: 39.445840°  
Long: 108.049016°

Caerus Piceance LLC

Well location, NOLTE #13A-13 (TARGET BOTTOM HOLE), located as shown in LOT 10 of Section 13, T7S, R96W, 6th P.M., Garfield County, Colorado.

### BASIS OF ELEVATION

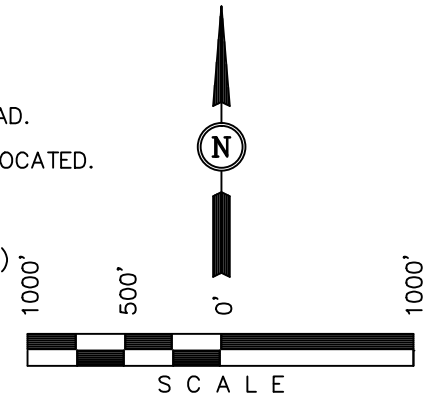
SPOT ELEVATION AT THE NORTHWEST CORNER OF SECTION 30, T5S, R95W, 6th P.M., TAKEN FROM THE FORKED GULCH QUADRANGLE, GARFIELD COUNTY, COLORADO, 7.5 MINUTE QUAD. (TOPOGRAPHIC MAP) PUBLISHED BY THE UNITED STATES DEPARTMENT OF THE INTERIOR, GEOLOGICAL SURVEY. SAID ELEVATION IS MARKED AS BEING 5966 FEET.

### BASIS OF BEARINGS

BASIS OF BEARINGS IS A G.P.S. OBSERVATION.

### LEGEND:

- └ = 90° SYMBOL
- = PROPOSED WELL HEAD.
- ▲ = SECTION CORNERS LOCATED.
- △ = SECTION CORNERS RE-ESTABLISHED. (Not Set on Ground.)



### CERTIFICATE

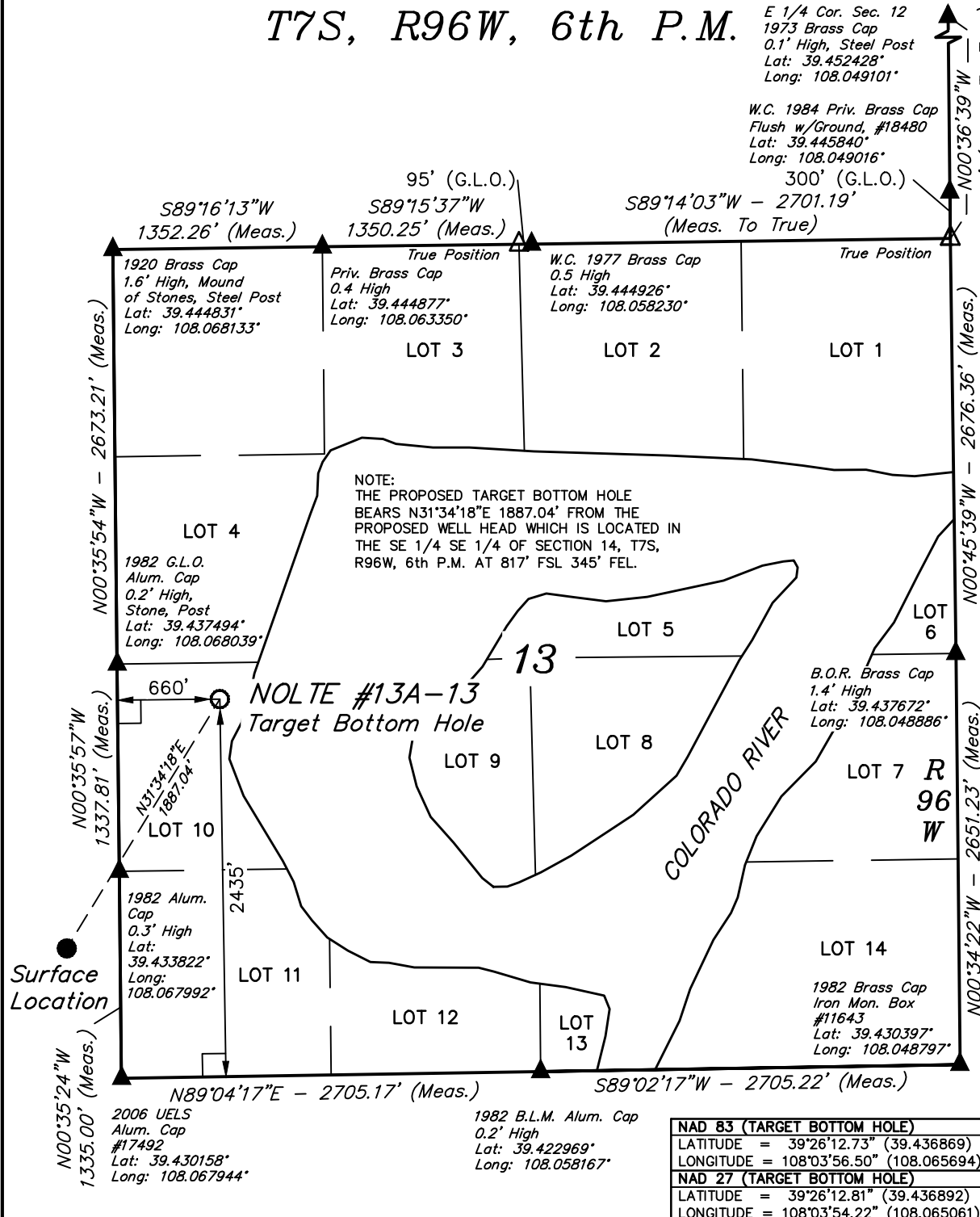
THIS IS TO CERTIFY THAT THE ABOVE PLAT WAS PREPARED FROM FIELD NOTES OF ACTUAL SURVEYS MADE BY ME OR UNDER MY SUPERVISION AND THAT THE SAME ARE TRUE AND CORRECT TO THE BEST OF MY KNOWLEDGE AND BELIEF.

REGISTERED LAND SURVEYOR  
REGISTRATION NO. 17492  
STATE OF COLORADO 09-04-13

**UINTAH ENGINEERING & LAND SURVEYING**  
85 SOUTH 200 EAST - VERNAL, UTAH 84078  
(435) 789-1017

SCALE 1" = 1000'	DATE SURVEYED: 06-13-13	DATE DRAWN: 08-29-13
PARTY B.J. B.B. T.B.	REFERENCES G.L.O. PLAT	
WEATHER WARM	FILE Caerus Piceance LLC	

NOTE:  
THE PROPOSED TARGET BOTTOM HOLE  
BEARS N31°34'18"E 1887.04' FROM THE  
PROPOSED WELL HEAD WHICH IS LOCATED IN  
THE SE 1/4 SE 1/4 OF SECTION 14, T7S,  
R96W, 6th P.M. AT 817' FSL 345' FEL.



<b>NAD 83 (TARGET BOTTOM HOLE)</b>
LATITUDE = 39°26'12.73" (39.436869)
LONGITUDE = 108°03'56.50" (108.065694)
<b>NAD 27 (TARGET BOTTOM HOLE)</b>
LATITUDE = 39°26'12.81" (39.436892)
LONGITUDE = 108°03'54.22" (108.065061)



DISTANCES FROM WELL HEAD																
WELL NAME	BUILDING		BUILDING UNIT		HIGH OCCU. BUILDING		DOAA		PUBLIC ROAD		ABOVE GROUND UTILITY		RAILROAD		PROPERTY LINE	
	DIRECTION	LENGTH	DIRECTION	LENGTH	DIRECTION	LENGTH	DIRECTION	LENGTH	DIRECTION	LENGTH	DIRECTION	LENGTH	DIRECTION	LENGTH	DIRECTION	LENGTH
#11C-24	N06°E	2014'	N53°E	4236'	N42°E	4452'	N37°E	3808'	N55°W	431'	S83°W	465'	S61°E	209'	S63°E	158'
#11B-24	N06°E	2007'	N53°E	4228'	N42°E	4445'	N37°E	3800'	N55°W	429'	S82°W	470'	S61°E	210'	S63°E	158'
#11A-24	N06°E	1999'	N53°E	4221'	N42°E	4437'	N37°E	3792'	N55°W	428'	S81°W	475'	S61°E	210'	S63°E	158'
#14D-13	N06°E	1992'	N53°E	4214'	N42°E	4429'	N37°E	3784'	N55°W	427'	S80°W	480'	S61°E	210'	S63°E	158'
#14C-13	N06°E	1984'	N53°E	4207'	N42°E	4421'	N37°E	3776'	N55°W	426'	S80°W	484'	S61°E	210'	S63°E	158'
#14B-13	N06°E	1977'	N53°E	4199'	N42°E	4414'	N37°E	3769'	N55°W	425'	S79°W	489'	S61°E	211'	S61°E	158'
#14A-13	N06°E	1969'	N53°E	4192'	N42°E	4406'	N37°E	3761'	N55°W	424'	S78°W	494'	S61°E	211'	S61°E	158'
#13D-13	N06°E	1962'	N53°E	4185'	N42°E	4398'	N37°E	3753'	N55°W	423'	S77°W	500'	S61°E	211'	S61°E	158'
#13C-13	N06°E	1954'	N53°E	4178'	N42°E	4390'	N38°E	3745'	N55°W	422'	S77°W	505'	S61°E	211'	S61°E	158'
#1-14 SWD	N06°E	2010'	N53°E	4240'	N42°E	4455'	N38°E	3810'	N55°W	421'	S82°W	457'	S61°E	219'	S63°E	168'
#44C-14	N06°E	2003'	N53°E	4233'	N42°E	4447'	N38°E	3802'	N55°W	420'	S81°W	462'	S61°E	220'	S63°E	168'
#44B-14	N06°E	1995'	N53°E	4225'	N42°E	4439'	N38°E	3794'	N55°W	418'	S80°W	467'	S61°E	220'	S63°E	168'
#44A-14	N06°E	1988'	N53°E	4218'	N42°E	4432'	N38°E	3786'	N55°W	417'	S80°W	472'	S61°E	220'	S63°E	168'
#43C-14	N06°E	1981'	N53°E	4211'	N42°E	4424'	N38°E	3778'	N55°W	416'	S79°W	477'	S61°E	220'	S63°E	168'
#43B-14	N06°E	1973'	N53°E	4204'	N42°E	4416'	N38°E	3770'	N55°W	415'	S78°W	482'	S61°E	221'	S61°E	168'
#43A-14	N06°E	1966'	N53°E	4196'	N42°E	4409'	N38°E	3762'	N55°W	414'	S77°W	487'	S61°E	221'	S61°E	168'
#13B-13	N06°E	1958'	N53°E	4189'	N42°E	4401'	N38°E	3755'	N55°W	413'	S77°W	492'	S61°E	221'	S61°E	168'
#13A-13	N06°E	1951'	N53°E	4182'	N42°E	4393'	N38°E	3747'	N55°W	412'	S76°W	497'	S61°E	221'	S61°E	168'

DISTANCES FROM PRODUCTION EQUIPMENT																
PRODUCTION FEATURE	BUILDING		BUILDING UNIT		HIGH OCCU. BUILDING		DOAA		PUBLIC ROAD		ABOVE GROUND UTILITY		RAILROAD		PROPERTY LINE	
	DIRECTION	LENGTH	DIRECTION	LENGTH	DIRECTION	LENGTH	DIRECTION	LENGTH	DIRECTION	LENGTH	DIRECTION	LENGTH	DIRECTION	LENGTH	DIRECTION	LENGTH
PRODUCTION TANKS									N55°W	170'	S62°W	188'				
PRODUCTION AREA	N07°E	1710'	N55°E	4007'	N44°E	4196'	N39°E	3543'					S63°E	259'	S63°E	205'