

Caerus Piceance LLC
CONSTRUCTION LAYOUT FOR
NOLTE #14-796
SECTION 14, T7S, R96W, 6th P.M.
SE 1/4 SE 1/4

FIGURE #1

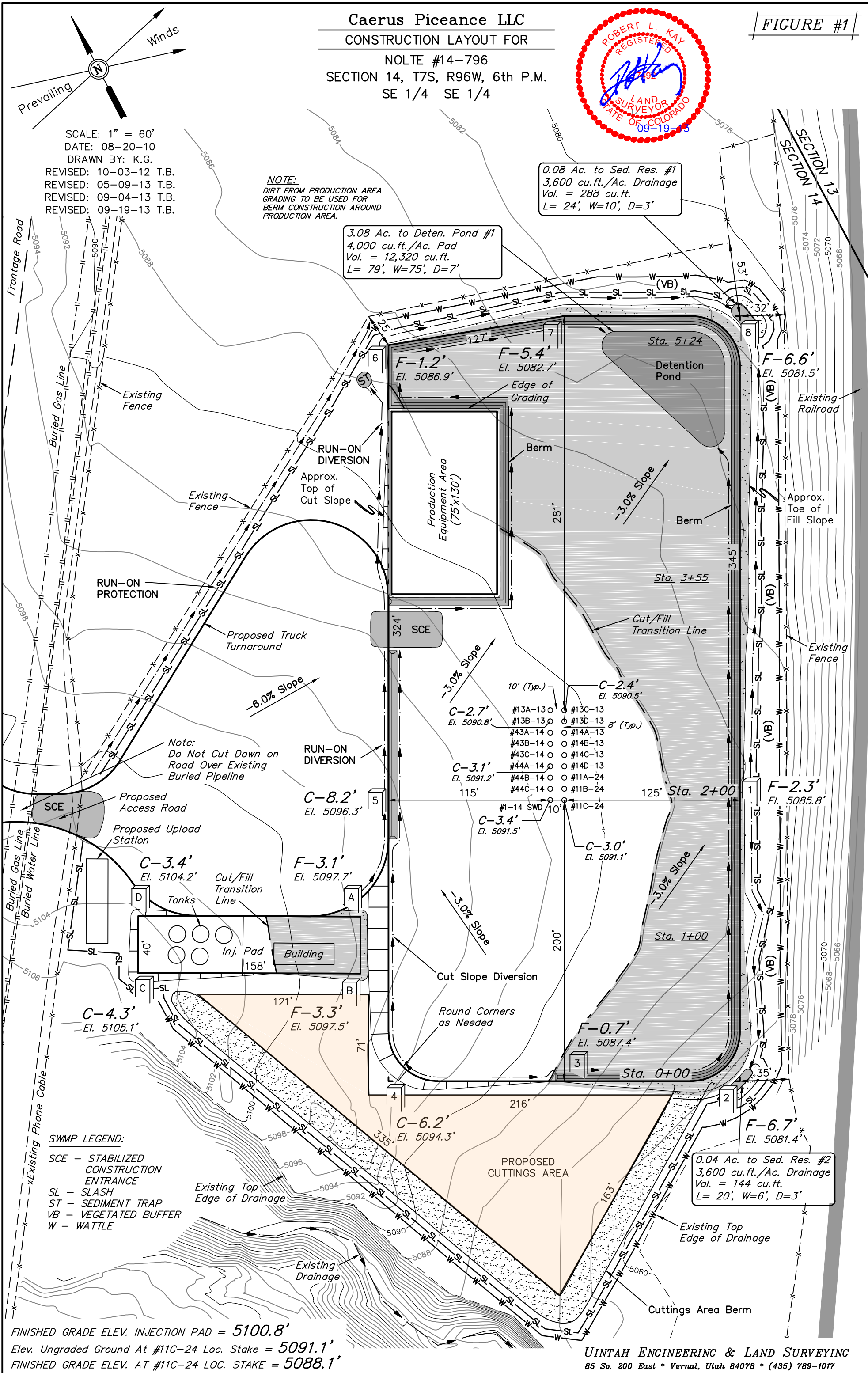


SCALE: 1" = 60'
DATE: 08-20-10
DRAWN BY: K.G.
REVISED: 10-03-12 T.B.
REVISED: 05-09-13 T.B.
REVISED: 09-04-13 T.B.
REVISED: 09-19-13 T.B.

NOTE:
DIRT FROM PRODUCTION AREA
GRADING TO BE USED FOR
BERM CONSTRUCTION AROUND
PRODUCTION AREA.

3.08 Ac. to Deten. Pond #1
4,000 cu.ft./Ac. Pad
Vol. = 12,320 cu.ft.
L= 79', W=75', D=7'

0.08 Ac. to Sed. Res. #1
3,600 cu.ft./Ac. Drainage
Vol. = 288 cu.ft.
L= 24', W=10', D=3'

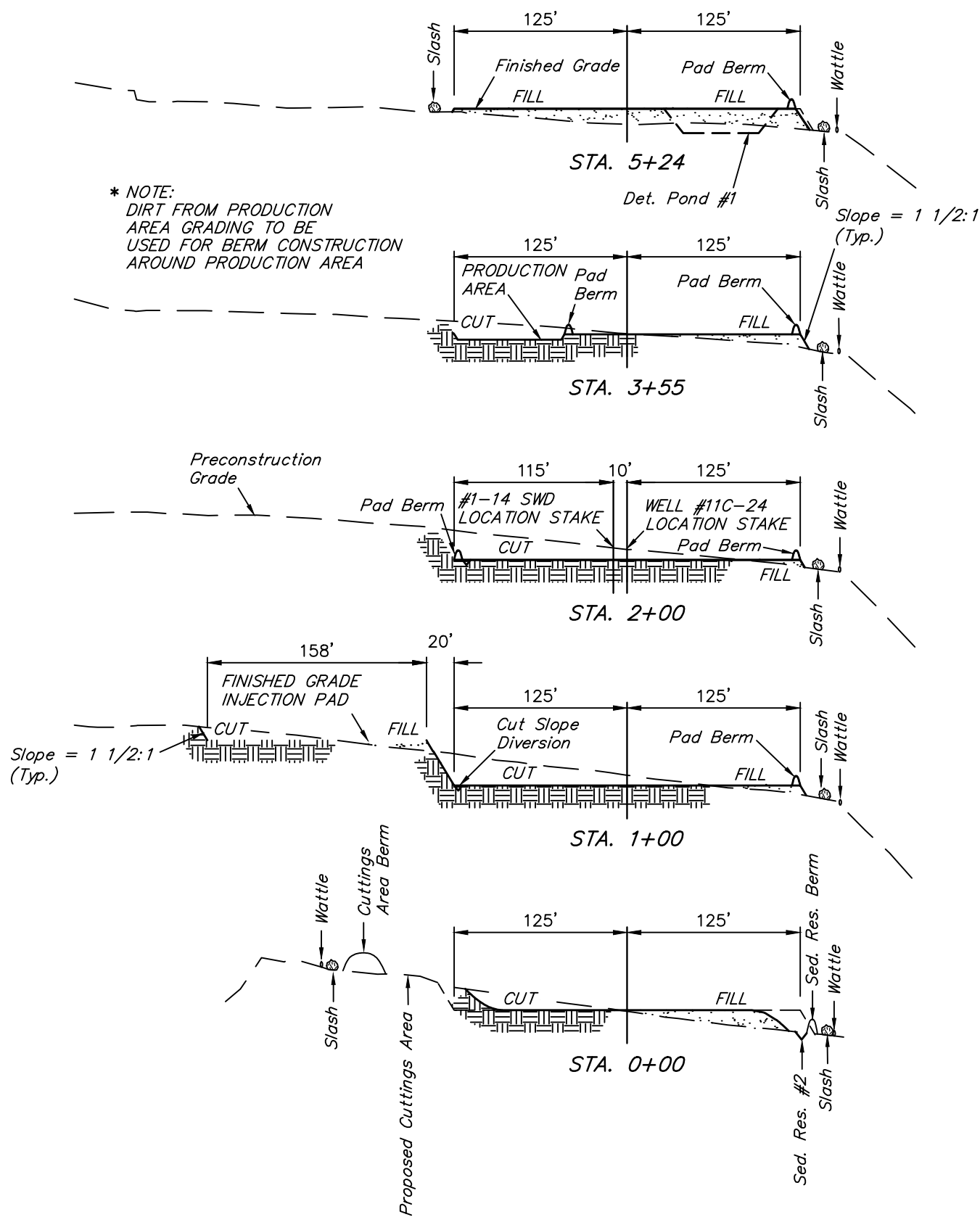


1" = 40'
X-Section
Scale
1" = 100'

DATE: 08-20-10
DRAWN BY: K.G.
REVISED: 10-03-12 T.B.
REVISED: 08-16-12 T.B.
REVISED: 08-29-13 T.B.
REVISED: 09-04-13 T.B.
REVISED: 09-19-13 T.B.

Caerus Piceance LLC
TYPICAL CROSS SECTIONS FOR
NOLTE #14-796
SECTION 14, T7S, R96W, 6th P.M.
SE 1/4 SE 1/4

FIGURE #2



NOTE:

Topsoil should not be Stripped Below Finished Grade on Substructure Area.

* NOTE:

FILL QUANTITY INCLUDES 5% FOR COMPACTION

* NOTE:

TOPSOIL PLACEMENT TO BE DETERMINED

APPROXIMATE YARDAGES WELL PAD

(6") Topsoil Stripping = 2,680 Cu. Yds.
Remaining Location = 7,900 Cu. Yds.
TOTAL CUT = 10,580 CU. YDS.
FILL = 7,900 CU. YDS.

EXCESS MATERIAL = 2,680 Cu. Yds.
Topsoil = 2,680 Cu. Yds.
EXCESS UNBALANCE = 0 Cu. Yds.
(After Interim Rehabilitation)

APPROXIMATE YARDAGES INJECTION PAD

(6") Topsoil Stripping = 150 Cu. Yds.
Remaining Location = 260 Cu. Yds.
TOTAL CUT = 410 CU. YDS.
FILL = 260 CU. YDS.

EXCESS MATERIAL = 150 Cu. Yds.
Topsoil = 150 Cu. Yds.
EXCESS UNBALANCE = 0 Cu. Yds.
(After Interim Rehabilitation)

APPROXIMATE ACREAGES
WELL SITE DISTURBANCE = ± 5.166 ACRES
INJECTION PAD DISTURBANCE = ± 0.176 ACRES
TRUCK TURNAROUND DISTURBANCE = ± 1.087 ACRES

Caerus Piceance LLC
TYPICAL RIG LAYOUT FOR
NOLTE #14-796
SECTION 14, T7S, R96W, 6th P.M.
SE 1/4 SE 1/4



FIGURE #3

SCALE: 1" = 60'
DATE: 09-04-13
DRAWN BY: T.B.
REVISED: 09-19-13 T.B.

