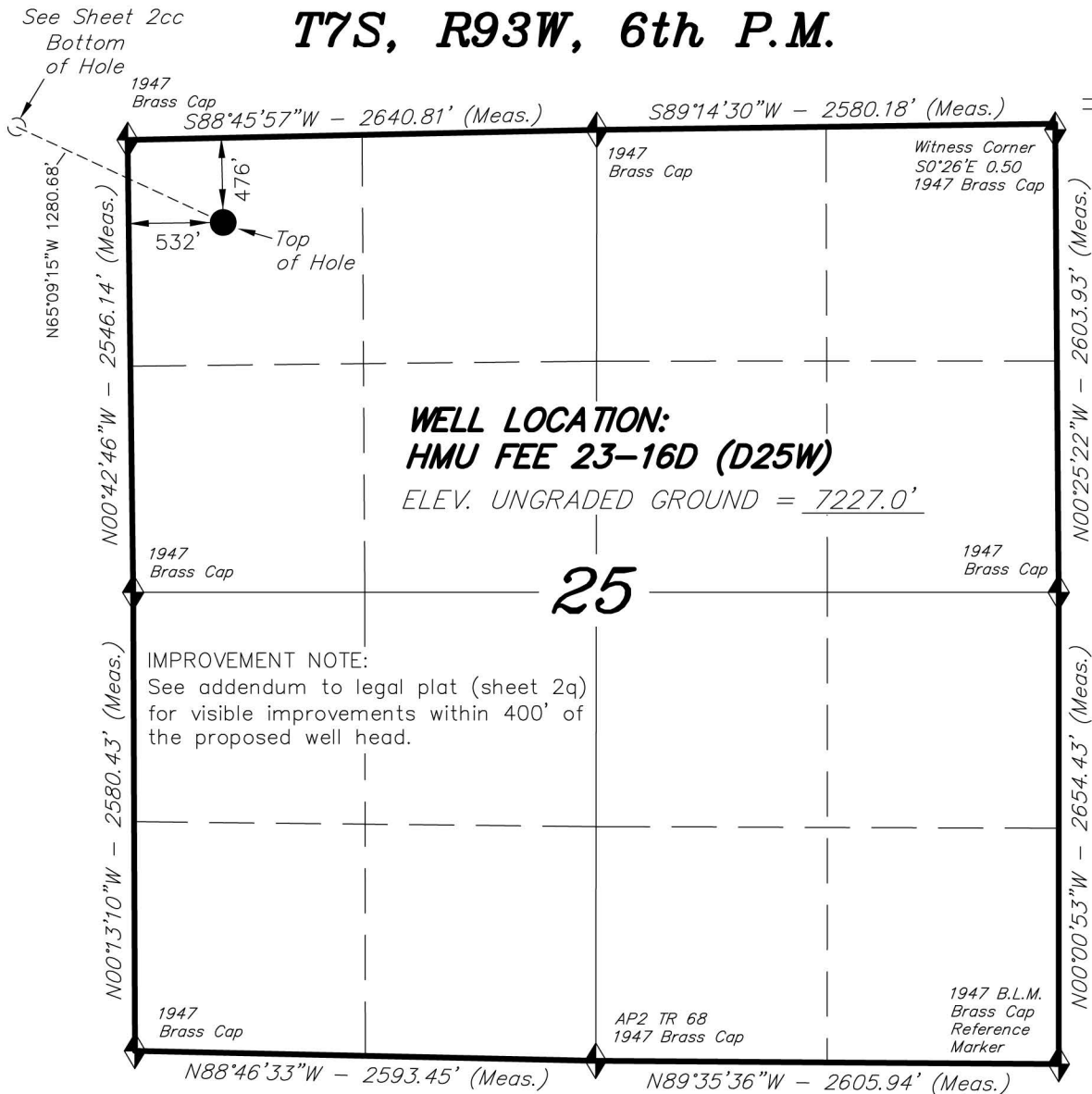
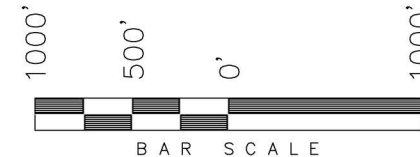


**T7S, R93W, 6th P.M.**

**ENCANA OIL & GAS (USA) INC**



WELL LOCATION, HMU FEE 23-16D (D25W), LOCATED AS SHOWN IN THE NW 1/4 NW 1/4 OF SECTION 25, T7S, R93W, 6th P.M. GARFIELD COUNTY, COLORADO.



**NOTES:**

1. Well footages are measured at right angles to the Section Lines.
2. Bearings are based on Global Positioning Satellite observations.
3. G.P.S. Operator: C.D. Slauch, (PDOP) = 3.2

THIS IS TO CERTIFY THAT THE ABOVE PLAT WAS PREPARED FROM FIELD NOTES OF A SURVEY MADE BY ME OR UNDER MY SUPERVISION. LOCATION HAS BEEN STAKED ON THE GROUND AS SHOWN ON THE PLAT, AND THAT THE SAME ARE TRUE AND CORRECT TO THE BEST OF MY KNOWLEDGE AND BELIEF.

REGISTERED LAND SURVEYOR  
REGISTRATION No. 830125  
STATE OF COLORADO  
# 30125

◆ = SECTION CORNERS LOCATED

Basis of elevation is the Rifle 2 Triangulation Station. 39°31'53.80" N Lat. & 107°47'07.78" W Long. (NAD 83). Elevation = 5323.1' (NAVD88).

NAD 83 (SURFACE HOLE LOCATION)	
LATITUDE	= 39°25'22.68" (39.422967°)
LONGITUDE	= 107°43'50.73" (107.730757°)

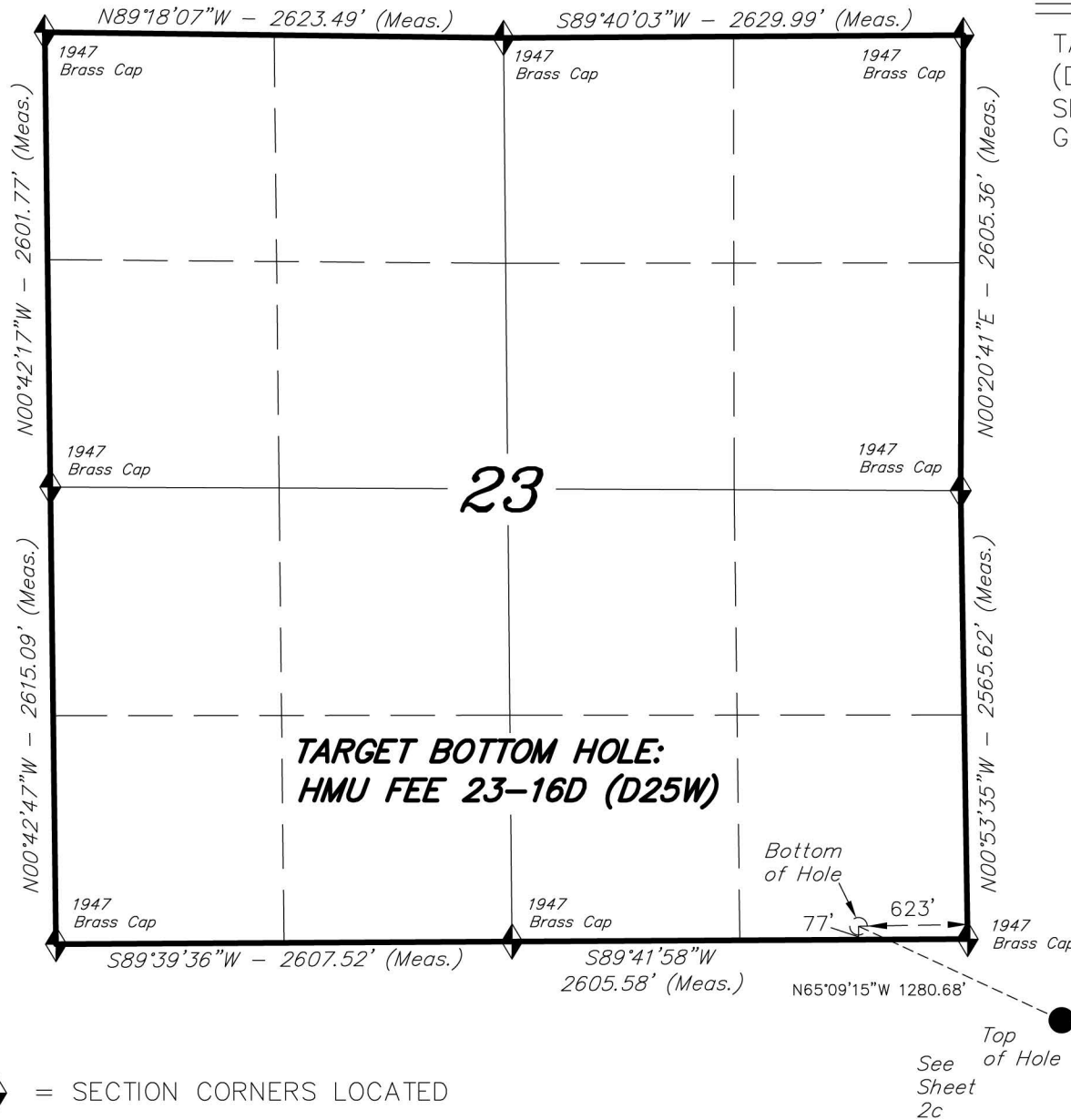
**TRI STATE LAND SURVEYING & CONSULTING**

180 NORTH VERNAL AVE. - VERNAL, UTAH 84078  
(435) 781-2501

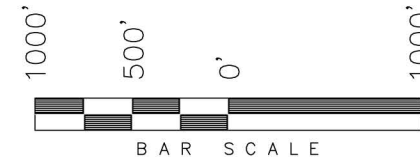
DATE SURVEYED: 07-08-10	SURVEYED BY: C.D.S.	SHEET <b>2c</b> OF 8
DATE DRAWN: 07-30-10	DRAWN BY: F.T.M.	
REVISED: L.C.S. 10-07-13	SCALE: 1" = 1000'	

**T7S, R93W, 6th P.M.**

**ENCANA OIL & GAS (USA) INC**



TARGET BOTTOM HOLE, HMU FEE 23-16D (D25W), LOCATED AS SHOWN IN THE SE 1/4 SE 1/4 OF SECTION 23, T7S, R93W, 6th P.M., GARFIELD COUNTY, COLORADO.



**NOTES:**

1. Well footages are measured at right angles to the Section Lines.
2. Bearings are based on Global Positioning Satellite observations.



**TARGET BOTTOM HOLE:  
HMU FEE 23-16D (D25W)**

THIS IS TO CERTIFY THAT THE ABOVE PLAT WAS PREPARED FROM FIELD NOTES OF A SURVEY MADE BY ME OR UNDER MY SUPERVISION. THE LOCATION HAS BEEN STAKED ON THE GROUND AS SHOWN ON THE PLAT, AND THAT THE SAME ARE TRUE AND CORRECT TO THE BEST OF MY KNOWLEDGE AND BELIEF.

10-07-13  
# 30125  
REGISTERED LAND SURVEYOR  
REGISTRATION No. 830125  
STATE OF COLORADO  
NATIONAL LAND SURVEYOR

◆ = SECTION CORNERS LOCATED

Basis of elevation is the Rifle 2 Triangulation Station. 39°31'53.80" N Lat. & 107°47'07.78" W Long. (NAD 83). Elevation = 5323.1' (NAVD88).

NAD 83 (BOTTOM HOLE LOCATION)	
LATITUDE	= 39°25'28.00" (39.424446°)
LONGITUDE	= 107°44'05.53" (107.734869°)

**TRI STATE LAND SURVEYING & CONSULTING**

180 NORTH VERNAL AVE. - VERNAL, UTAH 84078  
(435) 781-2501

DATE SURVEYED: 07-08-10	SURVEYED BY: C.D.S.	<b>SHEET 2cc OF 8</b>
DATE DRAWN: 07-28-10	DRAWN BY: F.T.M.	
REVISED: L.C.S. 10-07-13	SCALE: 1" = 1000'	