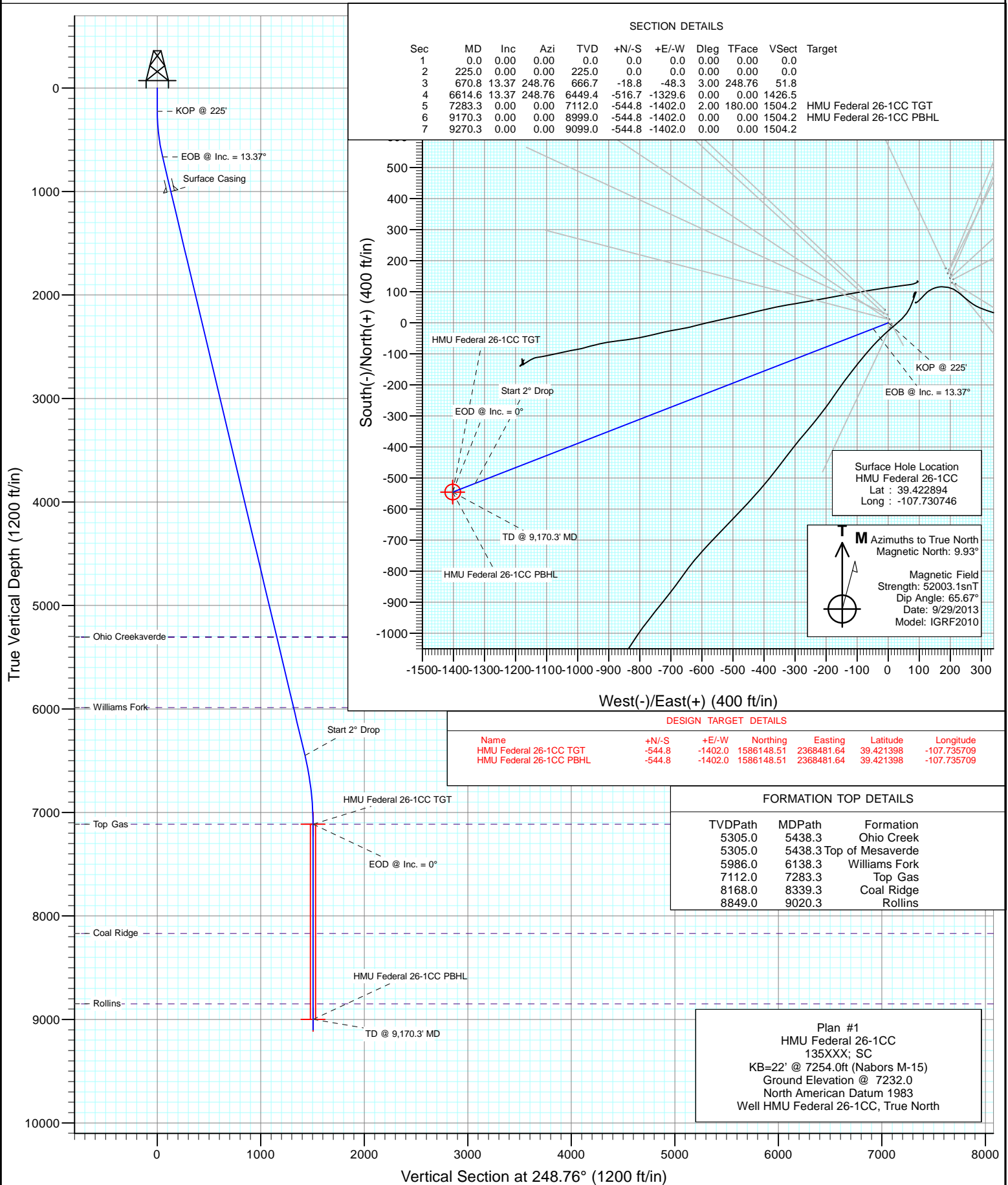


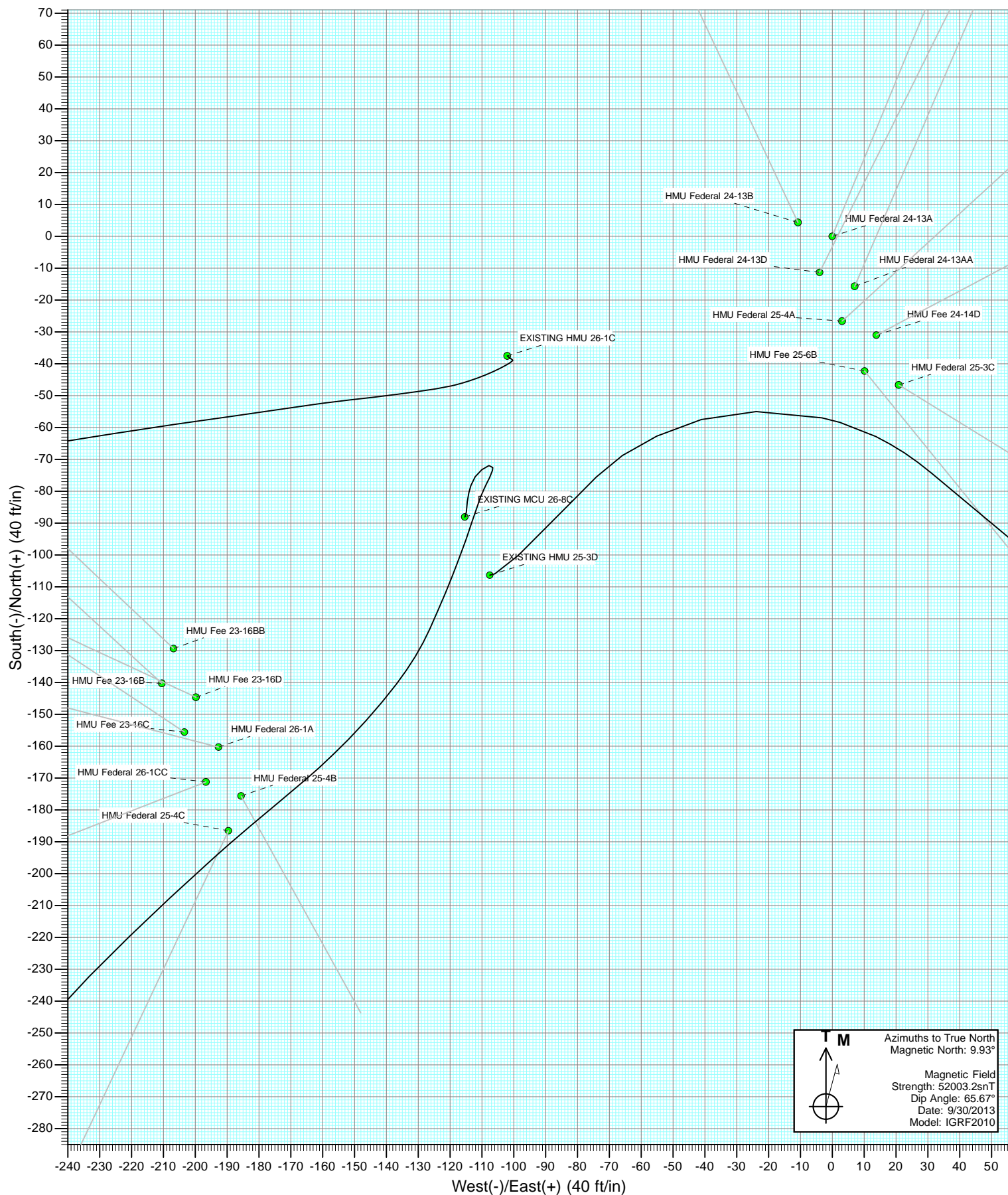


Project: Mamm Creek
Site: D25W Pad
Well: HMU Federal 26-1CC
Wellbore: OH
Design: Plan #1



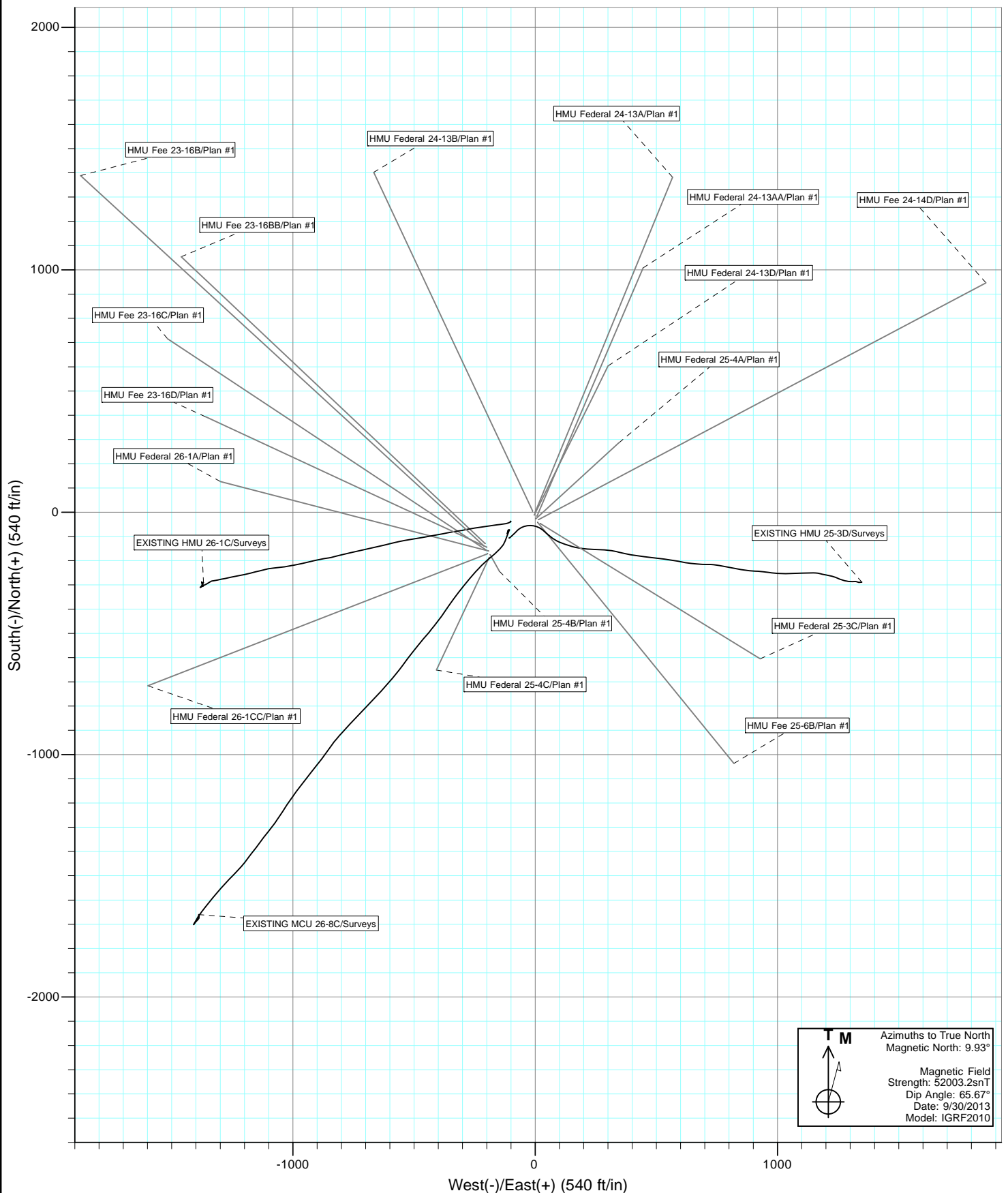


Project: Mamm Creek
Site: D25W Pad





Project: Mamm Creek
Site: D25W Pad



Cathedral Energy Services

Planning Report

Database:	USA EDM 5000 Multi Users DB	Local Co-ordinate Reference:	Well HMU Federal 26-1CC
Company:	EnCana Oil & Gas (USA) Inc	TVD Reference:	KB=22' @ 7254.0ft (Nabors M-15)
Project:	Mamm Creek	MD Reference:	KB=22' @ 7254.0ft (Nabors M-15)
Site:	D25W Pad	North Reference:	True
Well:	HMU Federal 26-1CC	Survey Calculation Method:	Minimum Curvature
Wellbore:	OH		
Design:	Plan #1		

Project	Mamm Creek		
Map System:	US State Plane 1983	System Datum:	Mean Sea Level
Geo Datum:	North American Datum 1983		
Map Zone:	Colorado Central Zone		

Site		D25W Pad			
Site Position:		Northing:	1,586,700.88 ft	Latitude:	39.423009
From:	Lat/Long	Easting:	2,369,887.50 ft	Longitude:	-107.730782
Position Uncertainty:	0.0 ft	Slot Radius:	13.200 in	Grid Convergence:	-1.41 °

Well	HMU Federal 26-1CC					
Well Position	+N/-S	0.0 ft	Northing:	1,586,658.77 ft	Latitude:	39.422894
	+E/-W	0.0 ft	Easting:	2,369,896.64 ft	Longitude:	-107.730746
Position Uncertainty		0.0 ft	Wellhead Elevation:	ft	Ground Level:	7,232.0 ft

Wellbore	OH				
Magnetics	Model Name	Sample Date	Declination (°)	Dip Angle (°)	Field Strength (nT)
	IGRF2010	9/29/2013	9.93	65.67	52,003

Design	Plan #1			
Audit Notes:				
Version:	Phase:	PLAN	Tie On Depth:	0.0
Vertical Section:	Depth From (TVD) (ft)	+N/-S (ft)	+E/-W (ft)	Direction (°)
	0.0	0.0	0.0	248.76

Plan Sections										
Measured Depth (ft)	Inclination (°)	Azimuth (°)	Vertical Depth (ft)	+N/-S (ft)	+E/-W (ft)	Dogleg Rate (°/100ft)	Build Rate (°/100ft)	Turn Rate (°/100ft)	TFO (°)	Target
0.0	0.00	0.00	0.0	0.0	0.0	0.00	0.00	0.00	0.00	
225.0	0.00	0.00	225.0	0.0	0.0	0.00	0.00	0.00	0.00	
670.8	13.37	248.76	666.7	-18.8	-48.3	3.00	3.00	0.00	248.76	
6,614.6	13.37	248.76	6,449.4	-516.7	-1,329.6	0.00	0.00	0.00	0.00	
7,283.3	0.00	0.00	7,112.0	-544.8	-1,402.0	2.00	-2.00	0.00	180.00	HMU Federal 26-1CC
9,170.3	0.00	0.00	8,999.0	-544.8	-1,402.0	0.00	0.00	0.00	0.00	HMU Federal 26-1CC
9,270.3	0.00	0.00	9,099.0	-544.8	-1,402.0	0.00	0.00	0.00	0.00	

Cathedral Energy Services

Planning Report

Database:	USA EDM 5000 Multi Users DB	Local Co-ordinate Reference:	Well HMU Federal 26-1CC
Company:	EnCana Oil & Gas (USA) Inc	TVD Reference:	KB=22' @ 7254.0ft (Nabors M-15)
Project:	Mamm Creek	MD Reference:	KB=22' @ 7254.0ft (Nabors M-15)
Site:	D25W Pad	North Reference:	True
Well:	HMU Federal 26-1CC	Survey Calculation Method:	Minimum Curvature
Wellbore:	OH		
Design:	Plan #1		

Planned Survey

Measured Depth (ft)	Inclination (°)	Azimuth (°)	Vertical Depth (ft)	+N/-S (ft)	+E/-W (ft)	Vertical Section (ft)	Dogleg Rate (°/100ft)	Build Rate (°/100ft)	Comments / Formations
0.0	0.00	0.00	0.0	0.0	0.0	0.0	0.00	0.00	
100.0	0.00	0.00	100.0	0.0	0.0	0.0	0.00	0.00	
200.0	0.00	0.00	200.0	0.0	0.0	0.0	0.00	0.00	
225.0	0.00	0.00	225.0	0.0	0.0	0.0	0.00	0.00	KOP @ 225'
300.0	2.25	248.76	300.0	-0.5	-1.4	1.5	3.00	3.00	
400.0	5.25	248.76	399.8	-2.9	-7.5	8.0	3.00	3.00	
500.0	8.25	248.76	499.1	-7.2	-18.4	19.8	3.00	3.00	
600.0	11.25	248.76	597.6	-13.3	-34.2	36.7	3.00	3.00	
670.8	13.37	248.76	666.7	-18.8	-48.3	51.8	3.00	3.00	EOB @ Inc. = 13.37°
700.0	13.37	248.76	695.2	-21.2	-54.6	58.5	0.00	0.00	
800.0	13.37	248.76	792.5	-29.6	-76.1	81.7	0.00	0.00	
900.0	13.37	248.76	889.7	-38.0	-97.7	104.8	0.00	0.00	
1,000.0	13.37	248.76	987.0	-46.3	-119.2	127.9	0.00	0.00	
1,013.3	13.37	248.76	1,000.0	-47.5	-122.1	131.0	0.00	0.00	Surface Casing
1,100.0	13.37	248.76	1,084.3	-54.7	-140.8	151.1	0.00	0.00	
1,200.0	13.37	248.76	1,181.6	-63.1	-162.4	174.2	0.00	0.00	
1,300.0	13.37	248.76	1,278.9	-71.5	-183.9	197.3	0.00	0.00	
1,400.0	13.37	248.76	1,376.2	-79.8	-205.5	220.4	0.00	0.00	
1,500.0	13.37	248.76	1,473.5	-88.2	-227.0	243.6	0.00	0.00	
1,600.0	13.37	248.76	1,570.8	-96.6	-248.6	266.7	0.00	0.00	
1,700.0	13.37	248.76	1,668.1	-105.0	-270.2	289.8	0.00	0.00	
1,800.0	13.37	248.76	1,765.3	-113.4	-291.7	313.0	0.00	0.00	
1,900.0	13.37	248.76	1,862.6	-121.7	-313.3	336.1	0.00	0.00	
2,000.0	13.37	248.76	1,959.9	-130.1	-334.8	359.2	0.00	0.00	
2,100.0	13.37	248.76	2,057.2	-138.5	-356.4	382.3	0.00	0.00	
2,200.0	13.37	248.76	2,154.5	-146.9	-377.9	405.5	0.00	0.00	
2,300.0	13.37	248.76	2,251.8	-155.2	-399.5	428.6	0.00	0.00	
2,400.0	13.37	248.76	2,349.1	-163.6	-421.1	451.7	0.00	0.00	
2,500.0	13.37	248.76	2,446.4	-172.0	-442.6	474.9	0.00	0.00	
2,600.0	13.37	248.76	2,543.7	-180.4	-464.2	498.0	0.00	0.00	
2,700.0	13.37	248.76	2,640.9	-188.8	-485.7	521.1	0.00	0.00	
2,800.0	13.37	248.76	2,738.2	-197.1	-507.3	544.2	0.00	0.00	
2,900.0	13.37	248.76	2,835.5	-205.5	-528.8	567.4	0.00	0.00	
3,000.0	13.37	248.76	2,932.8	-213.9	-550.4	590.5	0.00	0.00	
3,100.0	13.37	248.76	3,030.1	-222.3	-572.0	613.6	0.00	0.00	
3,200.0	13.37	248.76	3,127.4	-230.6	-593.5	636.8	0.00	0.00	
3,300.0	13.37	248.76	3,224.7	-239.0	-615.1	659.9	0.00	0.00	
3,400.0	13.37	248.76	3,322.0	-247.4	-636.6	683.0	0.00	0.00	
3,500.0	13.37	248.76	3,419.3	-255.8	-658.2	706.1	0.00	0.00	
3,600.0	13.37	248.76	3,516.5	-264.2	-679.8	729.3	0.00	0.00	
3,700.0	13.37	248.76	3,613.8	-272.5	-701.3	752.4	0.00	0.00	
3,800.0	13.37	248.76	3,711.1	-280.9	-722.9	775.5	0.00	0.00	
3,900.0	13.37	248.76	3,808.4	-289.3	-744.4	798.7	0.00	0.00	
4,000.0	13.37	248.76	3,905.7	-297.7	-766.0	821.8	0.00	0.00	
4,100.0	13.37	248.76	4,003.0	-306.0	-787.5	844.9	0.00	0.00	
4,200.0	13.37	248.76	4,100.3	-314.4	-809.1	868.0	0.00	0.00	
4,300.0	13.37	248.76	4,197.6	-322.8	-830.7	891.2	0.00	0.00	
4,400.0	13.37	248.76	4,294.8	-331.2	-852.2	914.3	0.00	0.00	
4,500.0	13.37	248.76	4,392.1	-339.6	-873.8	937.4	0.00	0.00	
4,600.0	13.37	248.76	4,489.4	-347.9	-895.3	960.6	0.00	0.00	
4,700.0	13.37	248.76	4,586.7	-356.3	-916.9	983.7	0.00	0.00	
4,800.0	13.37	248.76	4,684.0	-364.7	-938.5	1,006.8	0.00	0.00	

Cathedral Energy Services

Planning Report

Database:	USA EDM 5000 Multi Users DB	Local Co-ordinate Reference:	Well HMU Federal 26-1CC
Company:	EnCana Oil & Gas (USA) Inc	TVD Reference:	KB=22' @ 7254.0ft (Nabors M-15)
Project:	Mamm Creek	MD Reference:	KB=22' @ 7254.0ft (Nabors M-15)
Site:	D25W Pad	North Reference:	True
Well:	HMU Federal 26-1CC	Survey Calculation Method:	Minimum Curvature
Wellbore:	OH		
Design:	Plan #1		

Planned Survey									
Measured Depth (ft)	Inclination (°)	Azimuth (°)	Vertical Depth (ft)	+N/-S (ft)	+E/-W (ft)	Vertical Section (ft)	Dogleg Rate (°/100ft)	Build Rate (°/100ft)	Comments / Formations
4,900.0	13.37	248.76	4,781.3	-373.1	-960.0	1,029.9	0.00	0.00	
5,000.0	13.37	248.76	4,878.6	-381.4	-981.6	1,053.1	0.00	0.00	
5,100.0	13.37	248.76	4,975.9	-389.8	-1,003.1	1,076.2	0.00	0.00	
5,200.0	13.37	248.76	5,073.2	-398.2	-1,024.7	1,099.3	0.00	0.00	
5,300.0	13.37	248.76	5,170.4	-406.6	-1,046.2	1,122.5	0.00	0.00	
5,400.0	13.37	248.76	5,267.7	-415.0	-1,067.8	1,145.6	0.00	0.00	
5,438.3	13.37	248.76	5,305.0	-418.2	-1,076.1	1,154.5	0.00	0.00	Top of Mesaverde - Ohio Creek
5,500.0	13.37	248.76	5,365.0	-423.3	-1,089.4	1,168.7	0.00	0.00	
5,600.0	13.37	248.76	5,462.3	-431.7	-1,110.9	1,191.8	0.00	0.00	
5,700.0	13.37	248.76	5,559.6	-440.1	-1,132.5	1,215.0	0.00	0.00	
5,800.0	13.37	248.76	5,656.9	-448.5	-1,154.0	1,238.1	0.00	0.00	
5,900.0	13.37	248.76	5,754.2	-456.8	-1,175.6	1,261.2	0.00	0.00	
6,000.0	13.37	248.76	5,851.5	-465.2	-1,197.1	1,284.4	0.00	0.00	
6,100.0	13.37	248.76	5,948.8	-473.6	-1,218.7	1,307.5	0.00	0.00	
6,138.3	13.37	248.76	5,986.0	-476.8	-1,227.0	1,316.3	0.00	0.00	Williams Fork
6,200.0	13.37	248.76	6,046.0	-482.0	-1,240.3	1,330.6	0.00	0.00	
6,300.0	13.37	248.76	6,143.3	-490.3	-1,261.8	1,353.7	0.00	0.00	
6,400.0	13.37	248.76	6,240.6	-498.7	-1,283.4	1,376.9	0.00	0.00	
6,500.0	13.37	248.76	6,337.9	-507.1	-1,304.9	1,400.0	0.00	0.00	
6,600.0	13.37	248.76	6,435.2	-515.5	-1,326.5	1,423.1	0.00	0.00	
6,614.6	13.37	248.76	6,449.4	-516.7	-1,329.6	1,426.5	0.00	0.00	Start 2° Drop
6,700.0	11.67	248.76	6,532.8	-523.4	-1,346.9	1,445.0	2.00	-2.00	
6,800.0	9.67	248.76	6,631.0	-530.1	-1,364.1	1,463.5	2.00	-2.00	
6,900.0	7.67	248.76	6,729.9	-535.6	-1,378.2	1,478.6	2.00	-2.00	
7,000.0	5.67	248.76	6,829.2	-539.8	-1,389.0	1,490.2	2.00	-2.00	
7,100.0	3.67	248.76	6,928.9	-542.7	-1,396.6	1,498.3	2.00	-2.00	
7,200.0	1.67	248.76	7,028.8	-544.4	-1,400.9	1,503.0	2.00	-2.00	
7,283.3	0.00	0.00	7,112.0	-544.8	-1,402.0	1,504.2	2.00	-2.00	EOD @ Inc. = 0° - Top Gas
7,300.0	0.00	0.00	7,128.7	-544.8	-1,402.0	1,504.2	0.00	0.00	
7,400.0	0.00	0.00	7,228.7	-544.8	-1,402.0	1,504.2	0.00	0.00	
7,500.0	0.00	0.00	7,328.7	-544.8	-1,402.0	1,504.2	0.00	0.00	
7,600.0	0.00	0.00	7,428.7	-544.8	-1,402.0	1,504.2	0.00	0.00	
7,700.0	0.00	0.00	7,528.7	-544.8	-1,402.0	1,504.2	0.00	0.00	
7,800.0	0.00	0.00	7,628.7	-544.8	-1,402.0	1,504.2	0.00	0.00	
7,900.0	0.00	0.00	7,728.7	-544.8	-1,402.0	1,504.2	0.00	0.00	
8,000.0	0.00	0.00	7,828.7	-544.8	-1,402.0	1,504.2	0.00	0.00	
8,100.0	0.00	0.00	7,928.7	-544.8	-1,402.0	1,504.2	0.00	0.00	
8,200.0	0.00	0.00	8,028.7	-544.8	-1,402.0	1,504.2	0.00	0.00	
8,300.0	0.00	0.00	8,128.7	-544.8	-1,402.0	1,504.2	0.00	0.00	
8,339.3	0.00	0.00	8,168.0	-544.8	-1,402.0	1,504.2	0.00	0.00	Coal Ridge
8,400.0	0.00	0.00	8,228.7	-544.8	-1,402.0	1,504.2	0.00	0.00	
8,500.0	0.00	0.00	8,328.7	-544.8	-1,402.0	1,504.2	0.00	0.00	
8,600.0	0.00	0.00	8,428.7	-544.8	-1,402.0	1,504.2	0.00	0.00	
8,700.0	0.00	0.00	8,528.7	-544.8	-1,402.0	1,504.2	0.00	0.00	
8,800.0	0.00	0.00	8,628.7	-544.8	-1,402.0	1,504.2	0.00	0.00	
8,900.0	0.00	0.00	8,728.7	-544.8	-1,402.0	1,504.2	0.00	0.00	
9,000.0	0.00	0.00	8,828.7	-544.8	-1,402.0	1,504.2	0.00	0.00	
9,020.3	0.00	0.00	8,849.0	-544.8	-1,402.0	1,504.2	0.00	0.00	Rollins
9,100.0	0.00	0.00	8,928.7	-544.8	-1,402.0	1,504.2	0.00	0.00	
9,170.3	0.00	0.00	8,999.0	-544.8	-1,402.0	1,504.2	0.00	0.00	TD @ 9,170.3' MD
9,200.0	0.00	0.00	9,028.7	-544.8	-1,402.0	1,504.2	0.00	0.00	
9,270.3	0.00	0.00	9,099.0	-544.8	-1,402.0	1,504.2	0.00	0.00	Permit TD @ 9,270.3' MD

Cathedral Energy Services

Planning Report

Database:	USA EDM 5000 Multi Users DB	Local Co-ordinate Reference:	Well HMU Federal 26-1CC
Company:	EnCana Oil & Gas (USA) Inc	TVD Reference:	KB=22' @ 7254.0ft (Nabors M-15)
Project:	Mamm Creek	MD Reference:	KB=22' @ 7254.0ft (Nabors M-15)
Site:	D25W Pad	North Reference:	True
Well:	HMU Federal 26-1CC	Survey Calculation Method:	Minimum Curvature
Wellbore:	OH		
Design:	Plan #1		

Targets									
Target Name									
- hit/miss target	Dip Angle	Dip Dir.	TVD	+N/-S	+E/-W	Northing	Easting	Latitude	Longitude
- Shape	(°)	(°)	(ft)	(ft)	(ft)	(ft)	(ft)		
HMU Federal 26-1CC T(0.00	0.00	7,112.0	-544.8	-1,402.0	1,586,148.51	2,368,481.64	39.421398	-107.735709
- plan hits target center									
- Point									
HMU Federal 26-1CC PI	0.00	0.00	8,999.0	-544.8	-1,402.0	1,586,148.51	2,368,481.64	39.421398	-107.735709
- plan hits target center									
- Circle (radius 25.0)									

Casing Points				
Measured Depth	Vertical Depth		Casing Diameter	Hole Diameter
(ft)	(ft)	Name	(in)	(in)
1,013.3	1,000.0	Surface Casing		

Formations					
Measured Depth	Vertical Depth	Name	Lithology	Dip	Dip Direction
(ft)	(ft)			(°)	(°)
5,438.3	5,305.0	Top of Mesaverde			
5,438.3	5,305.0	Ohio Creek			
6,138.3	5,986.0	Williams Fork			
7,283.3	7,112.0	Top Gas			
8,339.3	8,168.0	Coal Ridge			
9,020.3	8,849.0	Rollins			

Plan Annotations				
Measured Depth	Vertical Depth	Local Coordinates		Comment
(ft)	(ft)	+N/-S (ft)	+E/-W (ft)	
225.0	225.0	0.0	0.0	KOP @ 225'
670.8	666.7	-18.8	-48.3	EOB @ Inc. = 13.37°
6,614.6	6,449.4	-516.7	-1,329.6	Start 2° Drop
7,283.3	7,112.0	-544.8	-1,402.0	EOD @ Inc. = 0°
9,170.3	8,999.0	-544.8	-1,402.0	TD @ 9,170.3' MD
9,270.3	9,099.0	-544.8	-1,402.0	Permit TD @ 9,270.3' MD