

1625 Broadway  
Suite 2000  
Denver, CO 80202

Tel: 303.228.4000  
Fax: 303.228.4280

www.nobleenergyinc.com



October 18, 2013

Colorado Oil and Gas Conservation Commission  
The Chancery Building  
1120 Lincoln Street, Suite 801  
Denver, CO 80203  
Attn: Mr. Matt Lepore, Director

RE: Wells Ranch AE30-68-1BHNA  
Niobrara New Drill  
Township 6 North, Range 62 West, 6th P.M.  
Section 29: NW/4NW/4: 305' FNL & 65' FWL (Surface Location)  
Section 30: NE/4NE/4: 1148' FNL & 779' FEL (Beginning of Lateral)  
Township 6 North, Range 63 West, 6th P.M.  
Section 25: NE/4NE/4: 1155' FNL & 385' FEL (Bottom Hole Location)  
Weld County, Colorado

Dear Director:

Noble Energy, Inc. ("NEI") is planning to drill the captioned boundary well in accordance with the provisions of COGCC Rule 318A.e.

NEI's proposed wellbore spacing unit consists of the N/2 Sec. 30 T6N-R62W and E/2NE/4 Sec. 25, T6N, R 63W, creating a 407-acre wellbore spacing unit for the Niobrara formation. NEI is the only owner within the proposed wellbore spacing unit, therefore NEI hereby attests that no notice letters are required under COGCC Rule 318A(l).e.(6).

Enclosed are copies of the following documents to assist you in your review and approval of NEI's proposed APD for the captioned well:

- Map & plat illustrating proposed wellbore spacing unit.

Thank you for your attention to the enclosed. NEI respectfully requests that the COGCC review the enclosed information and approve the Application for Permit to Drill the captioned well.

Sincerely,

Jan  
Kajiwar

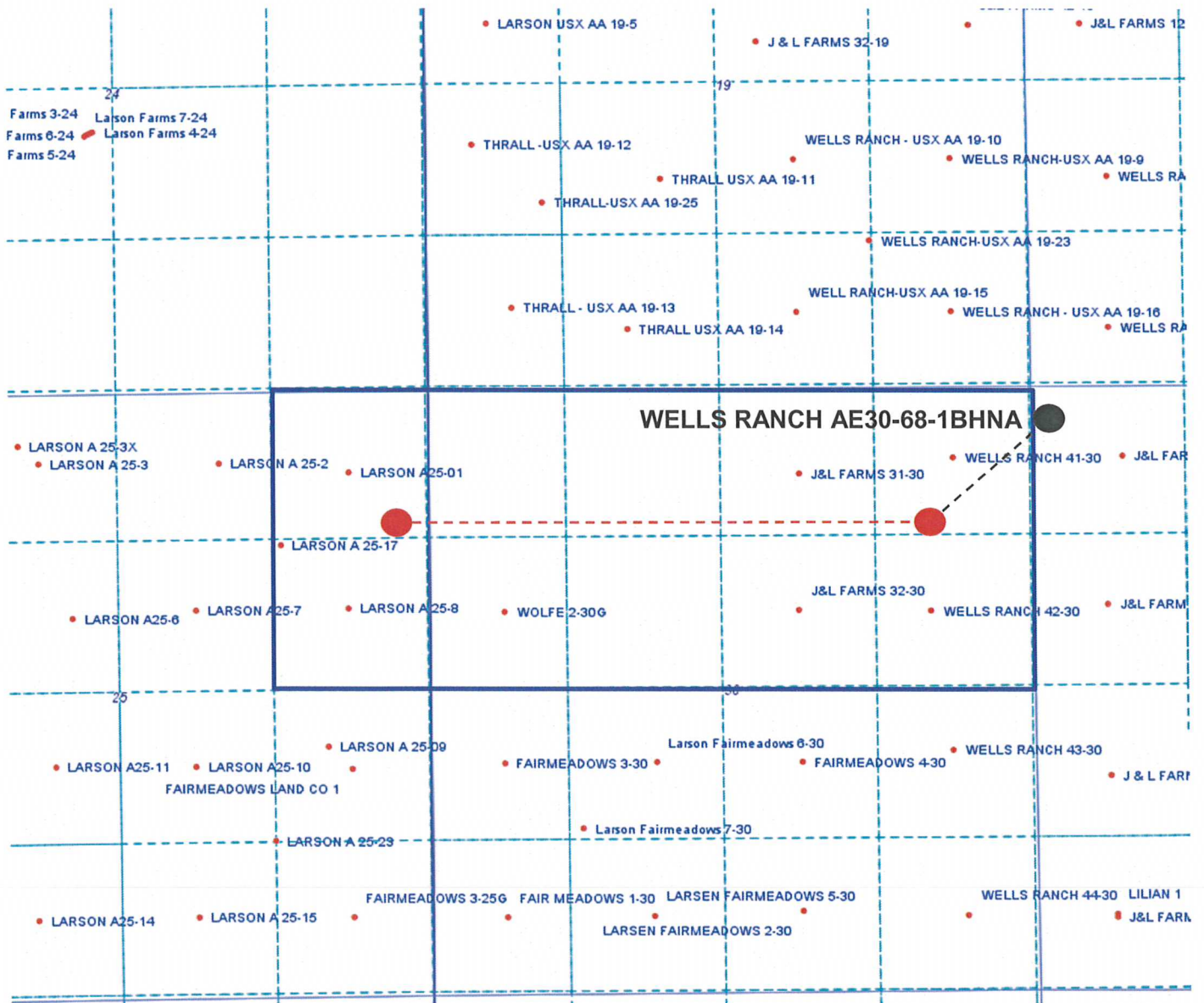
Digitally signed by Jan Kajiwar  
DN: cn=Jan Kajiwar, o,  
ou=Noble Energy, Inc.,  
email=jkajiwar@nobleenergyi  
nc.com, c=US  
Date: 2013.10.16 10:29:49  
-06'00'

Jan Kajiwar  
Regulatory Analyst III  
Noble Energy Inc.

# Wells Ranch AE30-68-1BHNA

Proposed Spacing Unit – Noble Energy, Inc

N/2 Section 30, Township 6 North, Range 62 West  
E/2NE/4 of Section 25, Township 6 North, Range 63 West



Legend



Proposed 407.40± acre spacing unit



Bottom Hole Location

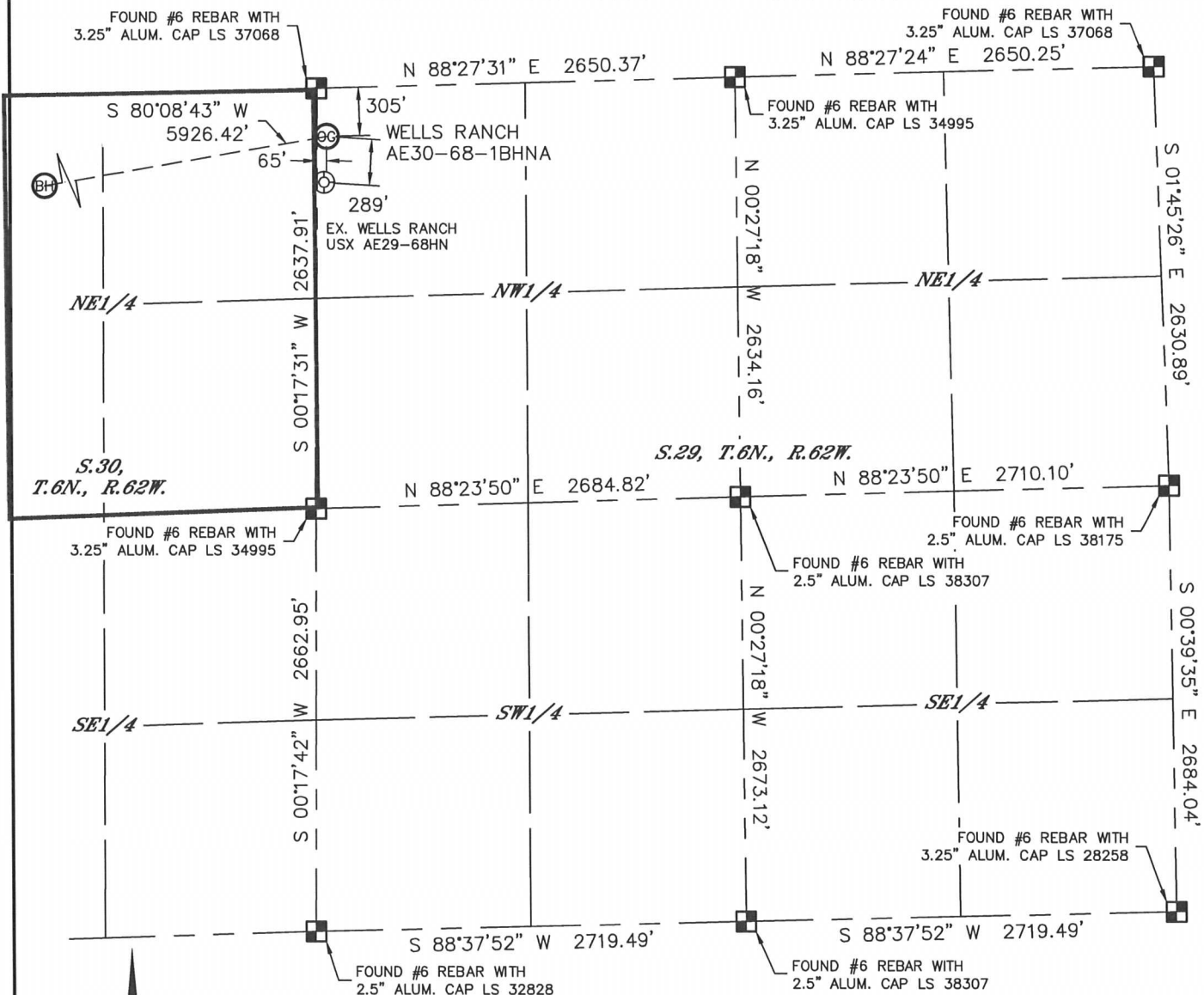


Lat40°, Inc. 1635 Foxtrail Drive, Suite 325 Loveland, CO 970-776-3321

# WELL LOCATION CERTIFICATE

THIS MAP DOES NOT REPRESENT A BOUNDARY SURVEY

SECTION: 29  
TOWNSHIP: 6N  
RANGE: 62W



In accordance with a request from Preston Foster with Noble Energy Inc. Lat40°, Inc. has determined the surface location of the WELLS RANCH AE30-68-1BHNA to be 305' from the NORTH line and 65' from the WEST line as measured at right angles from the section lines of Section 29, Township 6 North, Range 62 West and the bottom hole to be 1155' from the NORTH line and 385' from the EAST line as measured at right angles from the section lines of Section 25, Township 6 North, Range 63 West of the Sixth Principal Meridian, County of Weld, State of Colorado.

I hereby state that this Well Location Certificate was prepared by me, or under my direct supervision, that the fieldwork was completed on 8/1/2013, for and on behalf of Noble Energy Inc. That this is not a Land Survey Plat or an Improvement Survey Plat, and that it is not to be relied upon for establishment of fence, building, or other future improvement lines.

## NOTE:

- 1) Bearings shown are Grid Bearings of the Colorado State Plane Coordinate System, North Zone, North American Datum 1983/2007. The lineal dimensions as contained herein are based upon the "U.S. Survey Foot."
  - 2) Ground elevations are based on an observed GPS elevation (NAVD 1988 DATUM).
  - 3) IMPROVEMENTS: See LOCATION DRAWING for all visible improvements within 500' of disturbed area.
  - 4) SURFACE USE: RANGELAND
  - 5) INSTRUMENT OPERATOR: ADAM KELLY
  - 6) NEAREST EXISTING WELL: WELLS RANCH USX AE29-68HN, 289'
- NEAREST CULTURAL ITEMS:  
BUILDING: 699' SE  
BUILDING UNIT: 5280'+  
HIGH OCCUPANCY BUILDING UNIT: 5280'+  
DESIGNATED OUTSIDE ACTIVITY AREA: 5280'+  
PUBLIC ROAD: 5280'+  
ABOVEGROUND UTILITY: 5280'+  
RAILROAD: 5280'+  
PROPERTY LINE: 65' W

**SURFACE LOCATION**  
LAT: 40.46412N  
LONG: 104.35597W  
PDOP: 1.3  
ELEV: 4775'  
1/4,1/4: NW1/4NW1/4

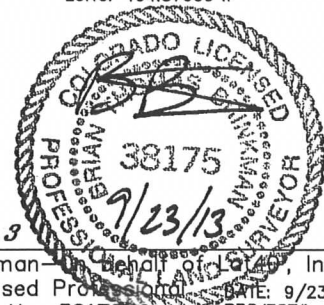
**BOTTOM HOLE**  
LAT: 40.46154N  
LONG: 104.37699W

## LEGEND

- = ALIQUOT MONUMENT AS DESCRIBED  
○ = CALCULATED POSITION

## SHEET 1 OF 3

Brian T. Brinkman - Lat40°, Inc.  
Colorado Licensed Professional Land Surveyor No. 38175  
DATE: 9/23/2013  
PROJECT#: 2013028

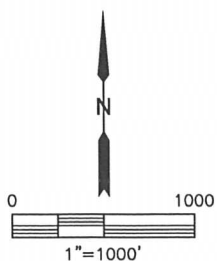
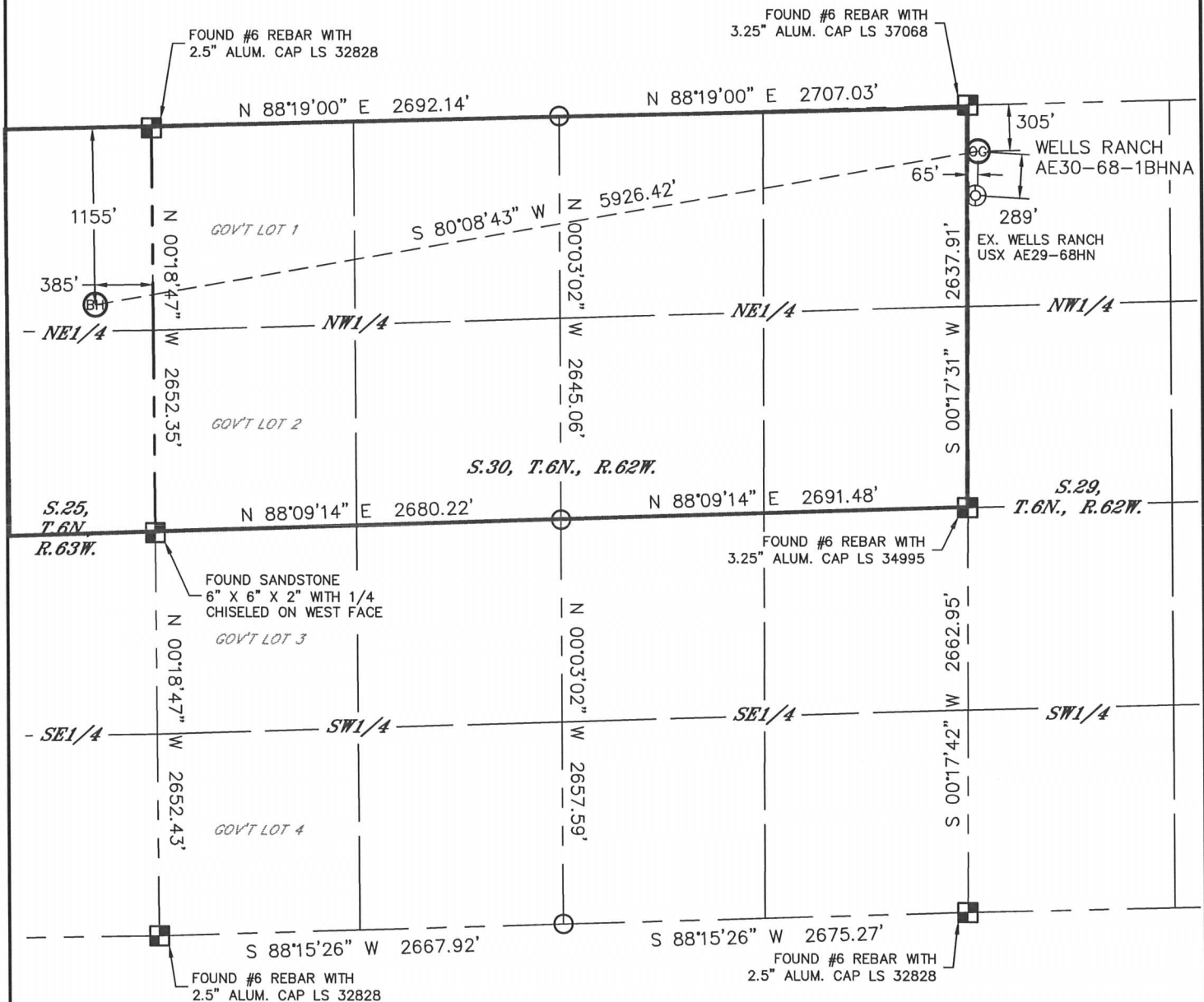


Lat40°, Inc. 1635 Foxtrail Drive, Suite 325 Loveland, CO 970-776-3321



# WELL LOCATION CERTIFICATE

THIS MAP DOES NOT REPRESENT A BOUNDARY SURVEY

SECTION: 29  
TOWNSHIP: 6N  
RANGE: 62W



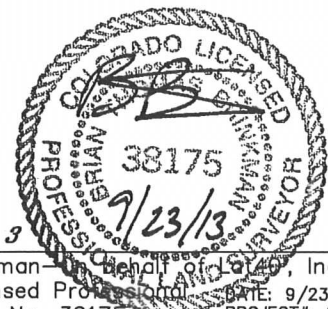
### LEGEND

-  = ALIQUOT MONUMENT AS DESCRIBED  
 = CALCULATED POSITION

*SHEET 2 OF 3*

Brian T. Brinkman—In default of LA 49, Inc.  
Colorado Licensed Professional Surveyor  
Land Surveyor No. 38175

DATE: 9/23/2013  
PROJECT#: 2013028



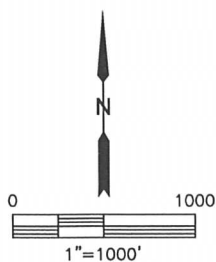
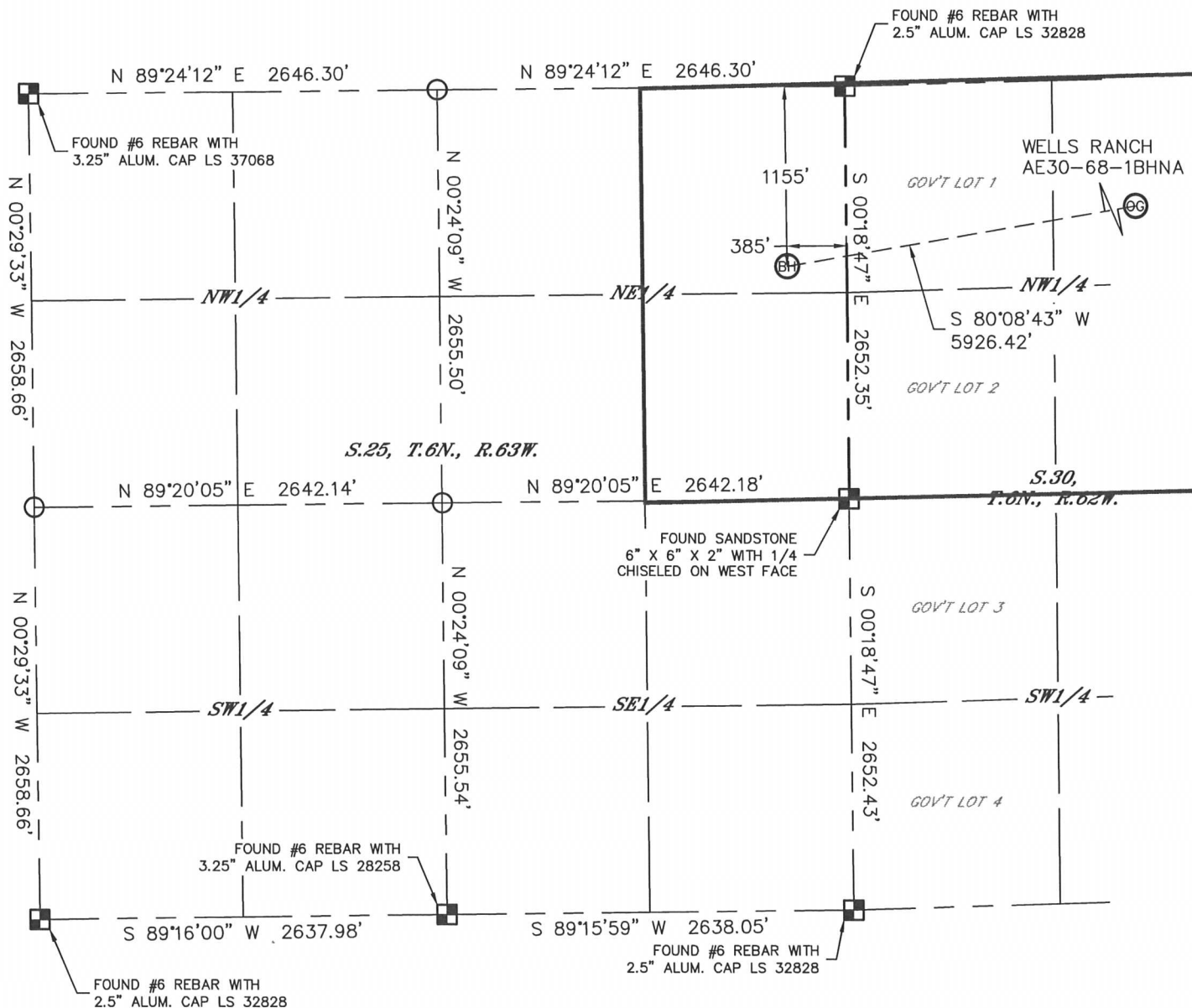


Lat40°, Inc. 1635 Foxtrail Drive, Suite 325 Loveland, CO 970-776-3321

# WELL LOCATION CERTIFICATE

THIS MAP DOES NOT REPRESENT A BOUNDARY SURVEY

SECTION: 29  
TOWNSHIP: 6N  
RANGE: 62W



## LEGEND

- = ALIQUOT MONUMENT AS DESCRIBED
- = CALCULATED POSITION

## SHEET 3 OF 3

Brian T. Brinkman — in Charge of Lat40°, Inc.  
Colorado Licensed Professional Land Surveyor No. 38175  
DATE: 9/23/2013  
PROJECT#: 201302R

