

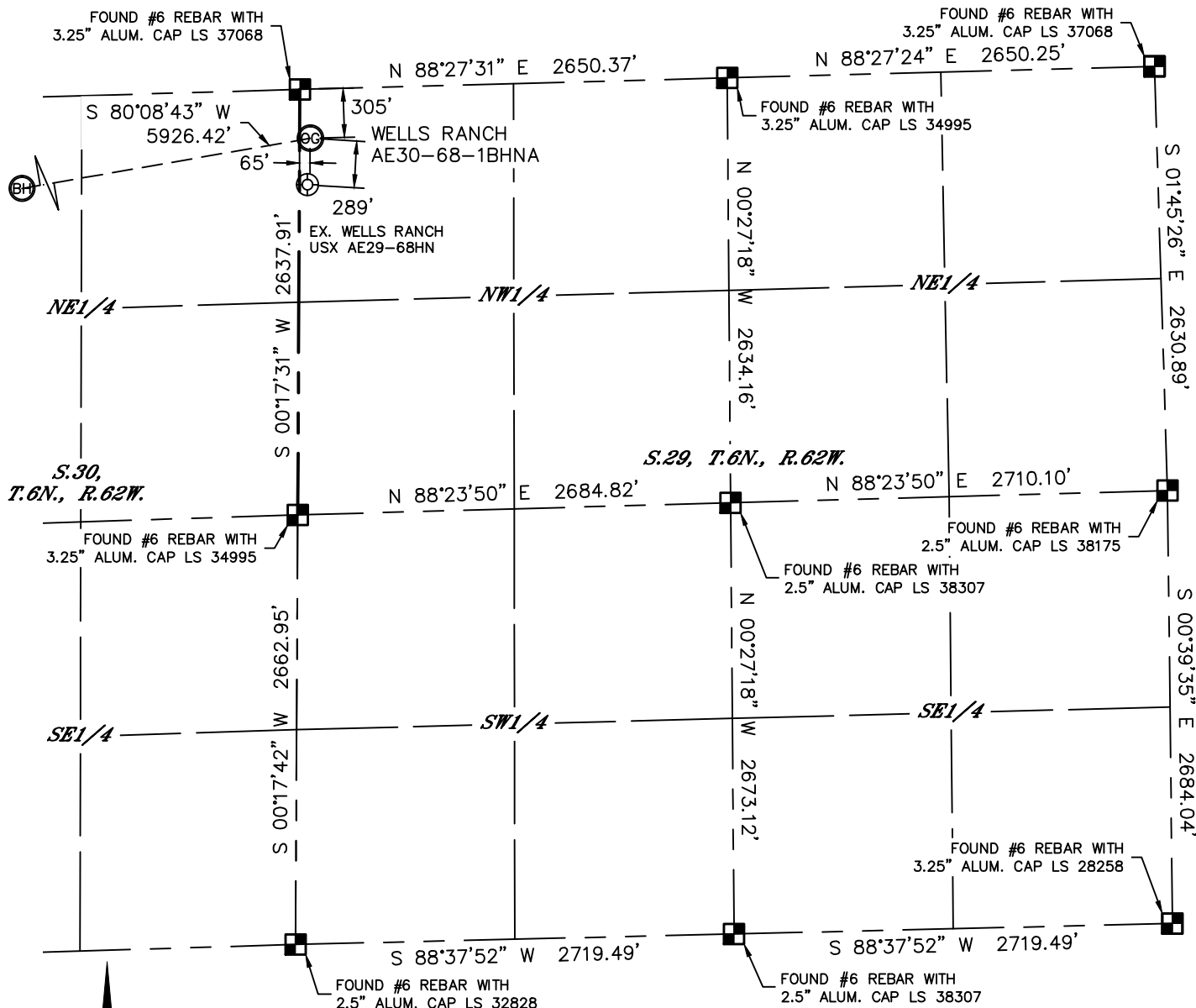


Lat40°, Inc. 1635 Foxtrail Drive, Suite 325 Loveland, CO 970-776-3321

WELL LOCATION CERTIFICATE

THIS MAP DOES NOT REPRESENT A BOUNDARY SURVEY

SECTION: 29
TOWNSHIP: 6N
RANGE: 62W



In accordance with a request from Preston Foster with Noble Energy Inc. Lat40°, Inc. has determined the surface location of the WELLS RANCH AE30-68-1BHNA to be 305' from the NORTH line and 65' from the WEST line as measured at right angles from the section lines of Section 29, Township 6 North, Range 62 West and the bottom hole to be 1155' from the NORTH line and 385' from the EAST line as measured at right angles from the section lines of Section 25, Township 6 North, Range 63 West of the Sixth Principal Meridian, County of Weld, State of Colorado.

I hereby state that this Well Location Certificate was prepared by me, or under my direct supervision, that the fieldwork was completed on 8/1/2013, for and on behalf of Noble Energy Inc. That this is not a Land Survey Plat or an Improvement Survey Plat, and that it is not to be relied upon for establishment of fence, building, or other future improvement lines.

NOTE:

- 1) Bearings shown are Grid Bearings of the Colorado State Plane Coordinate System, North Zone, North American Datum 1983/2007. The lineal dimensions as contained herein are based upon the "U.S. Survey Foot."
 - 2) Ground elevations are based on an observed GPS elevation (NAVD 1988 DATUM).
 - 3) IMPROVEMENTS: See LOCATION DRAWING for all visible improvements within 500' of disturbed area.
 - 4) SURFACE USE: RANGELAND
 - 5) INSTRUMENT OPERATOR: ADAM KELLY
 - 6) NEAREST EXISTING WELL: WELLS RANCH USX AE29-68HN, 289'
- NEAREST CULTURAL ITEMS:
BUILDING: 699' SE
BUILDING UNIT: 5280'+
HIGH OCCUPANCY BUILDING UNIT: 5280'+
DESIGNATED OUTSIDE ACTIVITY AREA: 5280'+
PUBLIC ROAD: 5280'+
ABOVEGROUND UTILITY: 5280'+
RAILROAD: 5280'+
PROPERTY LINE: 65' W

SURFACE LOCATION
LAT: 40.46412°N
LONG: 104.35597°W
PDOP: 1.3
ELEV: 4775'
1/4, 1/4: NW1/4NW1/4

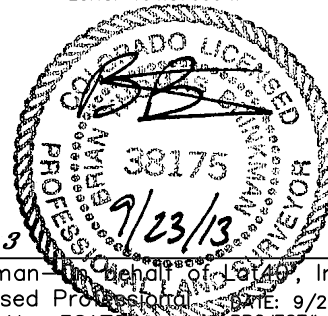
BOTTOM HOLE
LAT: 40.46154°N
LONG: 104.37699°W

LEGEND

- = ALIQUOT MONUMENT AS DESCRIBED
○ = CALCULATED POSITION

SHEET 1 OF 3

Brian T. Brinkman—on behalf of Lat40°, Inc.
Colorado Licensed Professional Land Surveyor No. 38175
DATE: 9/23/2013
PROJECT#: 2013028



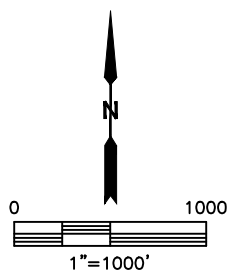
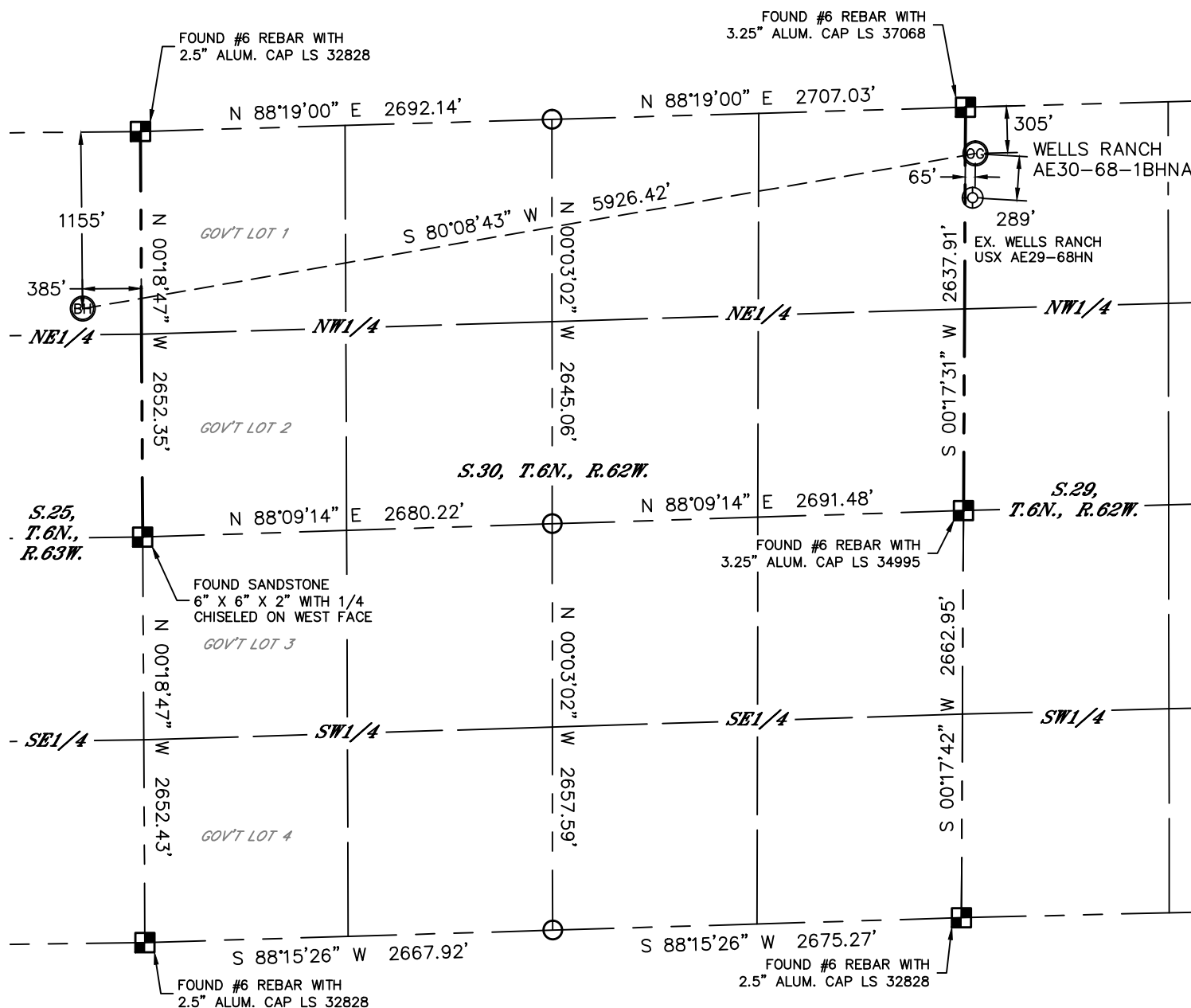


Lat40°, Inc. 1635 Foxtrail Drive, Suite 325 Loveland, CO 970-776-3321

WELL LOCATION CERTIFICATE

THIS MAP DOES NOT REPRESENT A BOUNDARY SURVEY

SECTION: 29
TOWNSHIP: 6N
RANGE: 62W

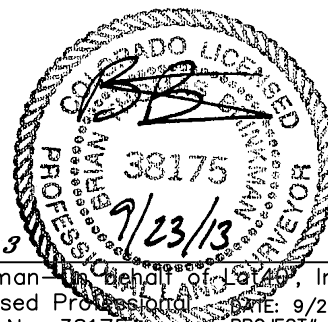


LEGEND

- = ALIQUOT MONUMENT AS DESCRIBED
- = CALCULATED POSITION

SHEET 2 OF 3

Brian T. Brinkman—On Behalf of Lat40°, Inc.
Colorado Licensed Professional Land Surveyor No. 38175
DATE: 9/23/2013
PROJECT#: 2013028



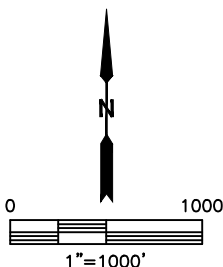
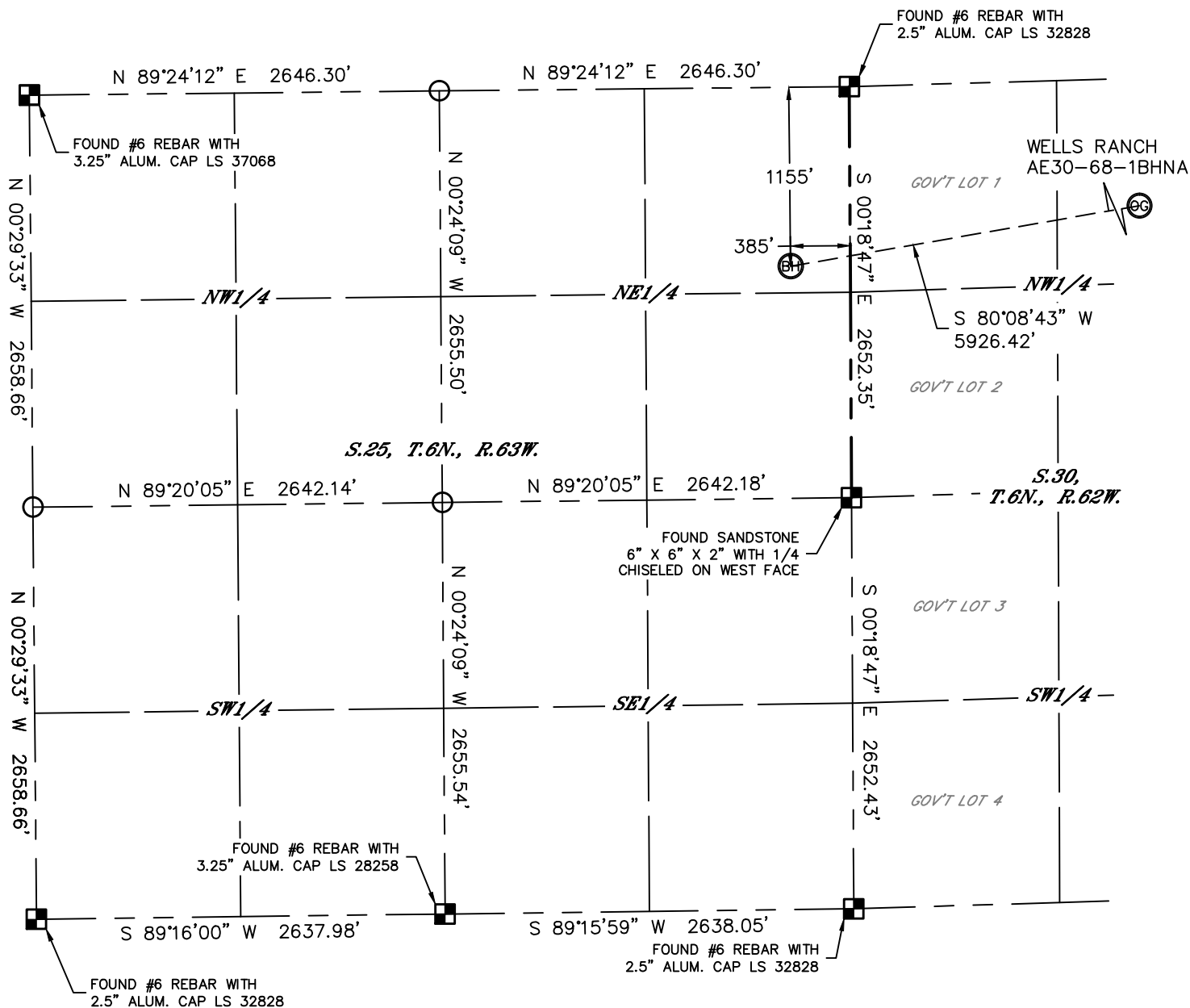


Lat40°, Inc. 1635 Foxtrail Drive, Suite 325 Loveland, CO 970-776-3321

WELL LOCATION CERTIFICATE

THIS MAP DOES NOT REPRESENT A BOUNDARY SURVEY

SECTION: 29
TOWNSHIP: 6N
RANGE: 62W

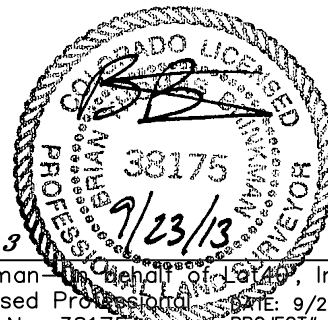


LEGEND

- = ALIQUOT MONUMENT AS DESCRIBED
- = CALCULATED POSITION

SHEET 3 OF 3

Brian T. Brinkman - On Behalf of Lat40°, Inc.
Colorado Licensed Professional Land Surveyor No. 38175
DATE: 9/23/2013
PROJECT#: 2013028





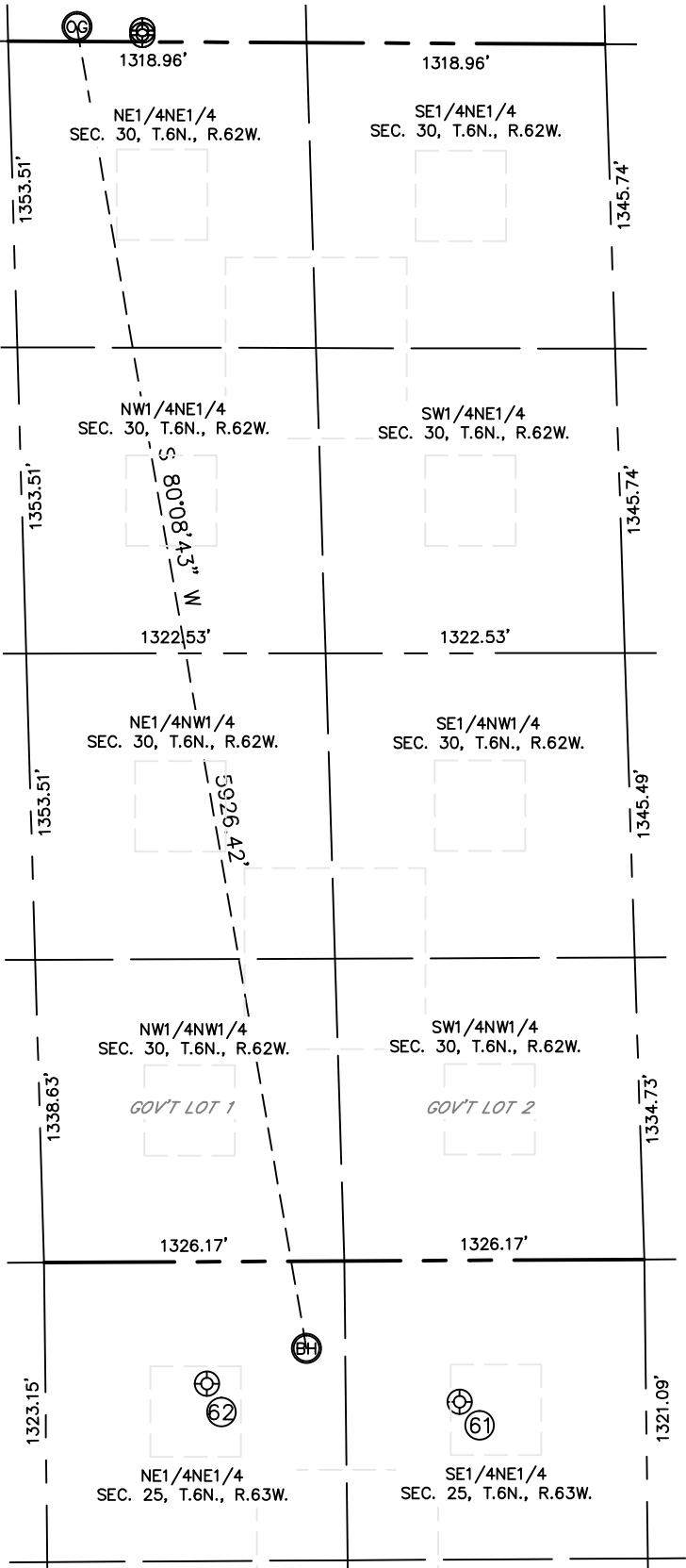
Lat40°, Inc. 1635 Foxtrail Drive, Suite 325 Loveland, CO 970-776-3321

SITE SKETCH

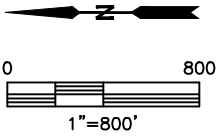
WELLS RANCH AE30-68-1BHNA

SECTION: 29
TOWNSHIP: 6N
RANGE: 62W

WELLS RANCH
AE30-68-1BHNA



WELL NO.	WELL NAME	SHL FOOTAGE			SHL LAT°	SHL LONG°	PDOP	ELEV (FT.)	1/4/1/4
61	WELLS RANCH USX AA 25-8	1829	FNL	626	FEL	-104.37788	2.1	4745	SENE
62	WELLS RANCH USX AA 25-01	714	FNL	540	FEL	-104.37754	2.0	4752	NENE



DATE: 8/14/2013
PROJECT#: 2013028